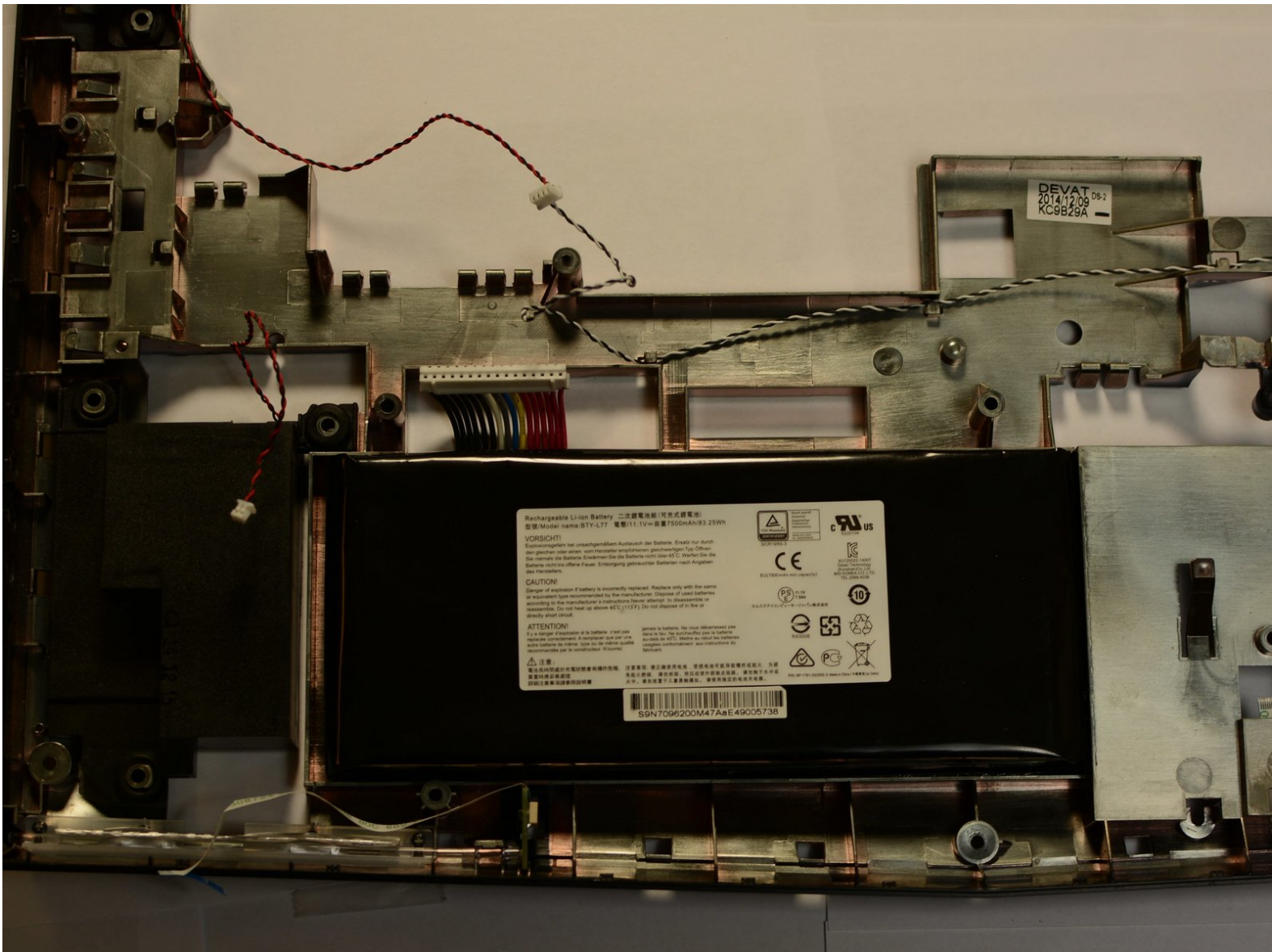




# MSI GT72 2QE Dominator Pro Battery Replacement

How to access, remove, and replace an MSI GT72 2QE Dominator Pro battery.

Written By: Kevin Shipp



## INTRODUCTION

This guide will tell MSI GT72 2QE Dominator Pro users how to replace a defective battery. It is a medium-level process that takes 15-20 minutes to complete.



### TOOLS:

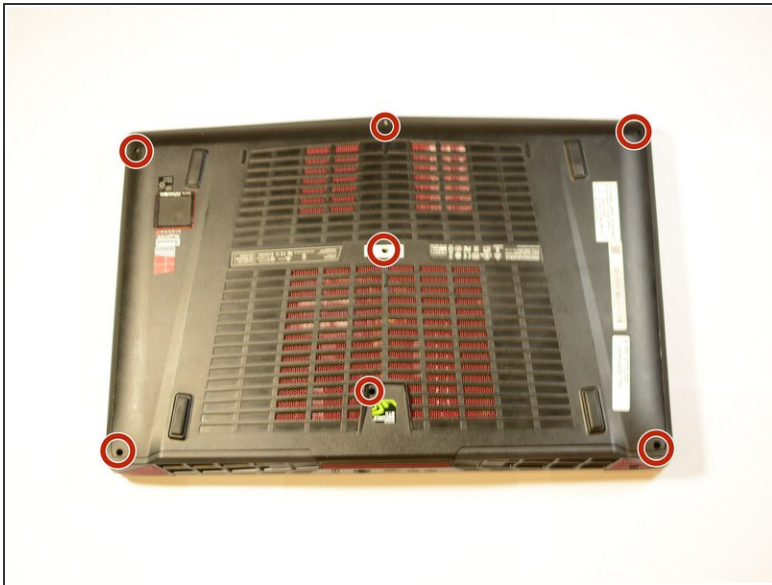
- [Phillips #0 Screwdriver](#) (1)
- [Plastic Cards](#) (1)



### PARTS:

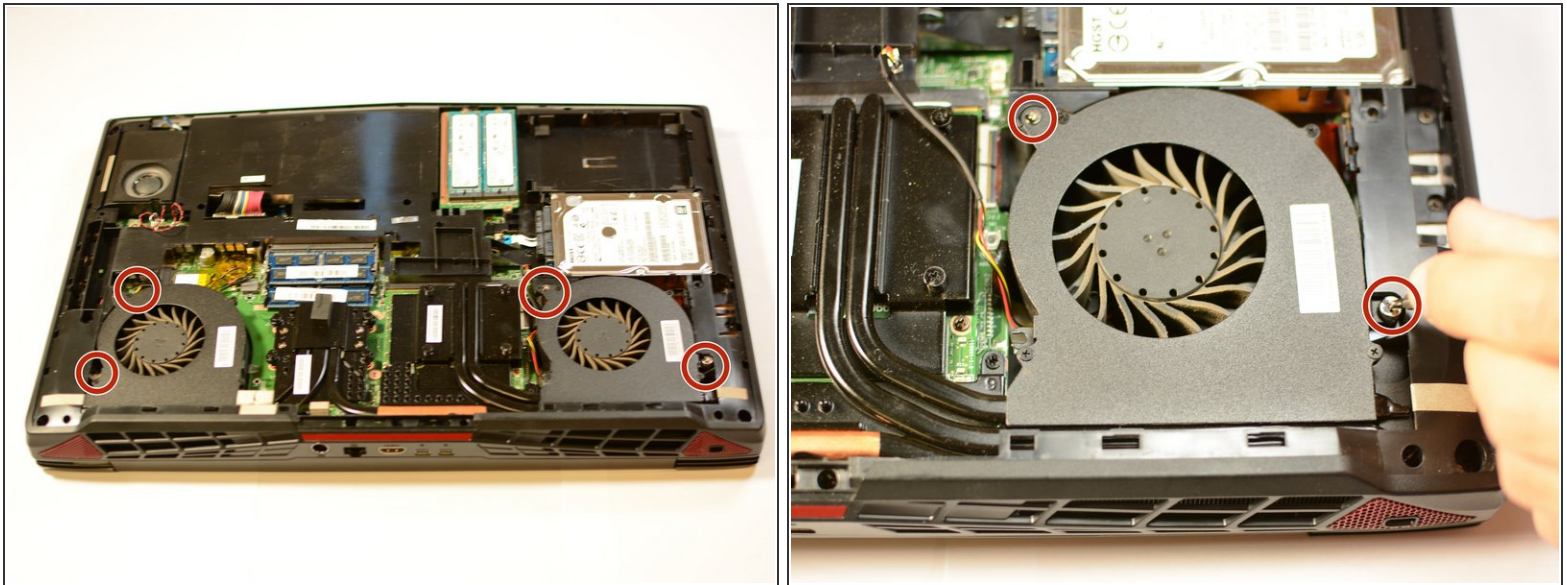
- [Double Sided Adhesive Tape](#) (1)

## Step 1 — Battery



- Remove 7 6mm Phillips #0 screws from bottom of laptop.
- Pull bottom off of laptop using tab.

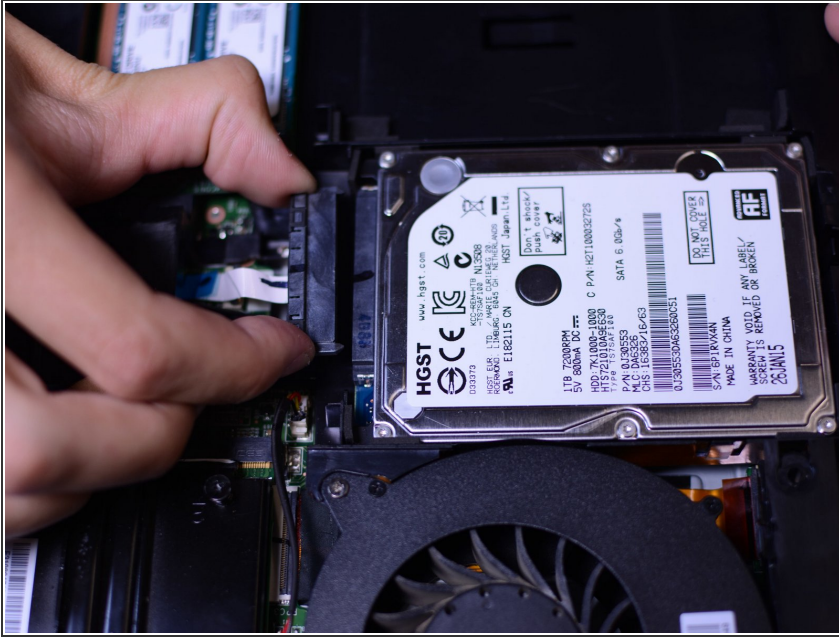
## Step 2



- Remove 1 4mm Phillips #0 and 1 10mm Phillips #0 screw, unplug yellow, black, and red cable, then remove fan.
- Repeat for other fan.
- ⓘ 10mm fan screw won't actually come out, as it is attached with rubber piece to fan. Unscrewing it from the lower case will allow for removal, though.

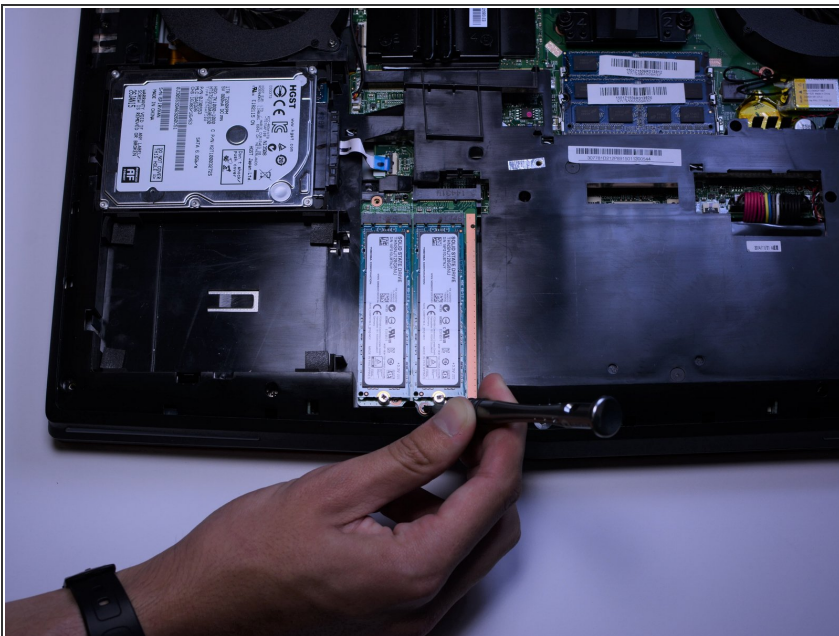


### Step 3



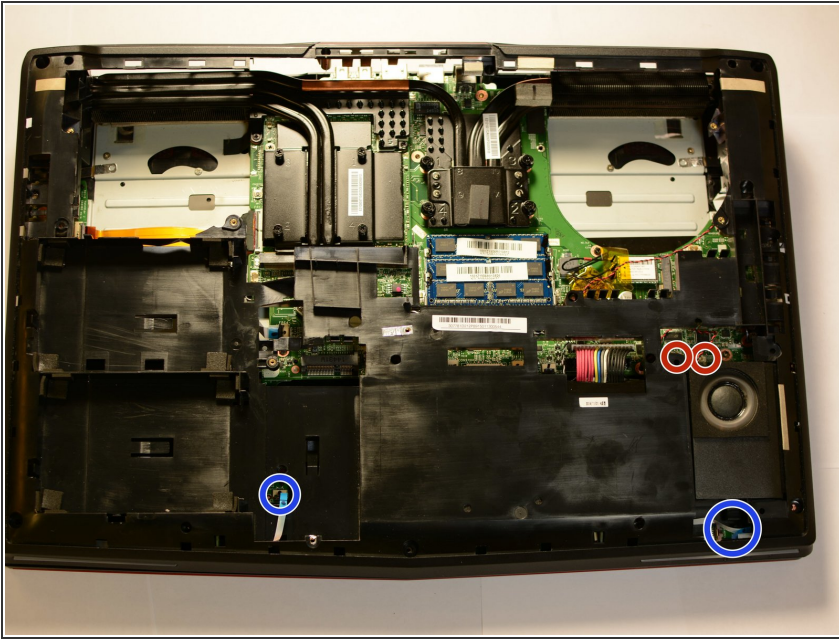
- Unplug SATA cable and remove hard drive.
- ⓘ Make sure to pull cable straight out in order to ensure it stays intact.

### Step 4



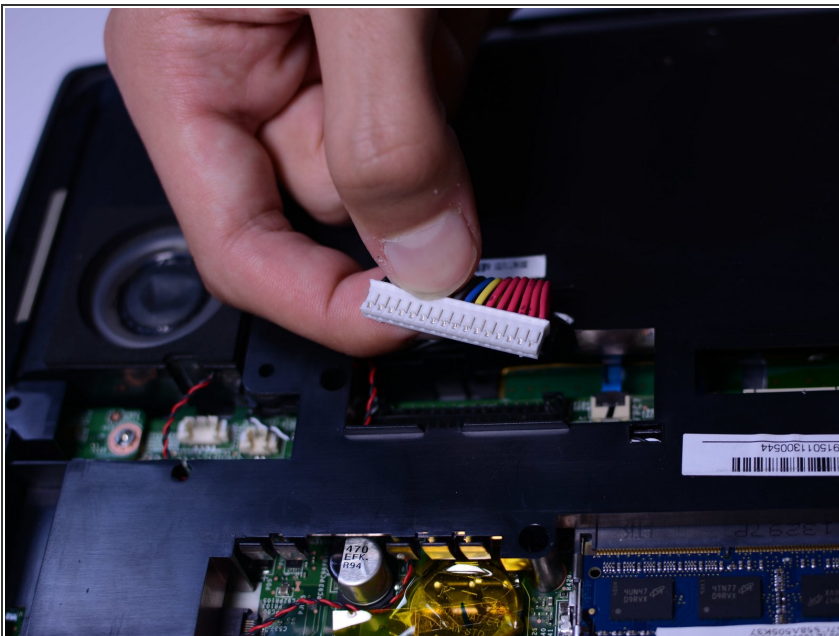
- Remove 2 6mm Phillips #0 screws and remove SSD.
- ⓘ Make sure you pull SSD straight out so it doesn't get damaged.

## Step 5



- Unplug both red and black speaker cables. Pull straight out so the connectors aren't damaged.
- Disconnect both these cables carefully by lifting the pressure tabs then gently pulling.

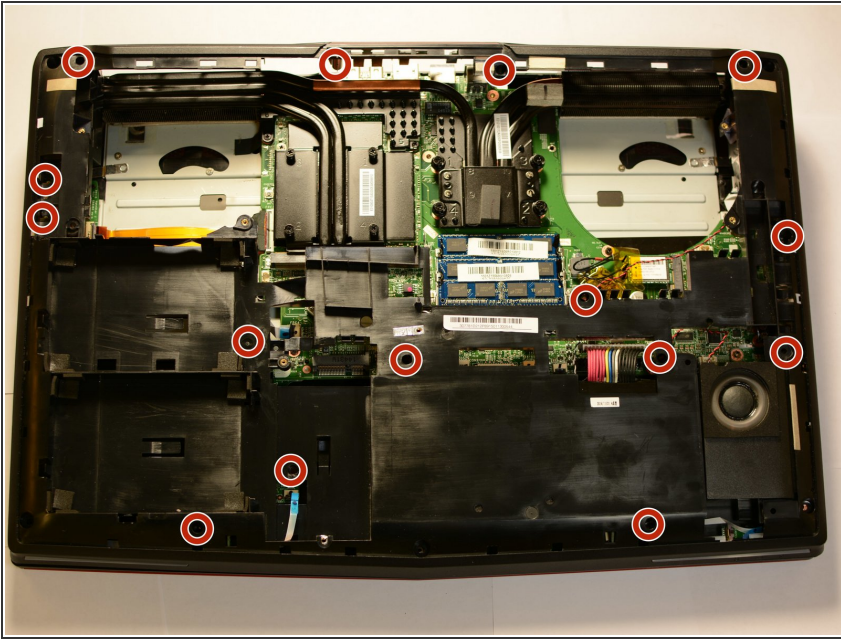
## Step 6



- Unplug battery cable.
- ⓘ Pull straight up so as not to damage pins.

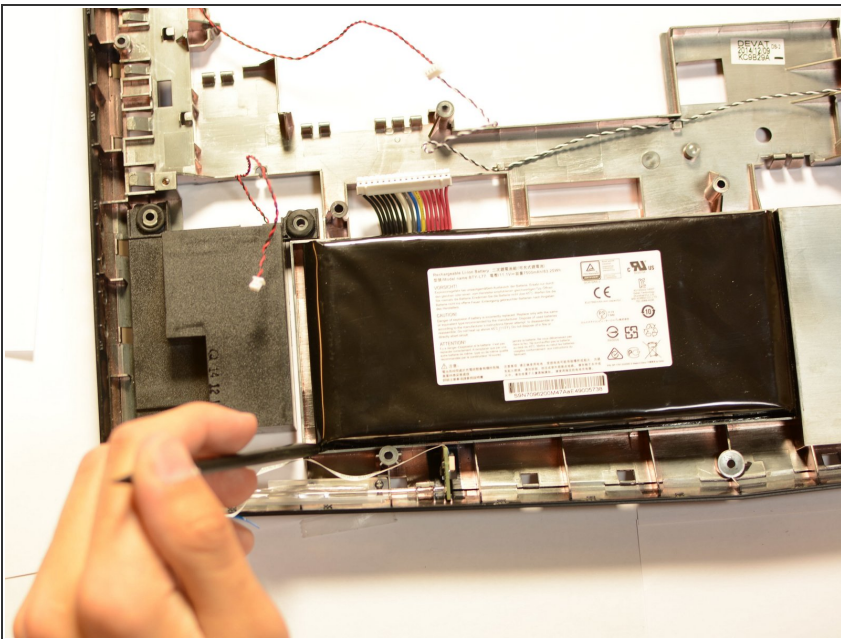


## Step 7



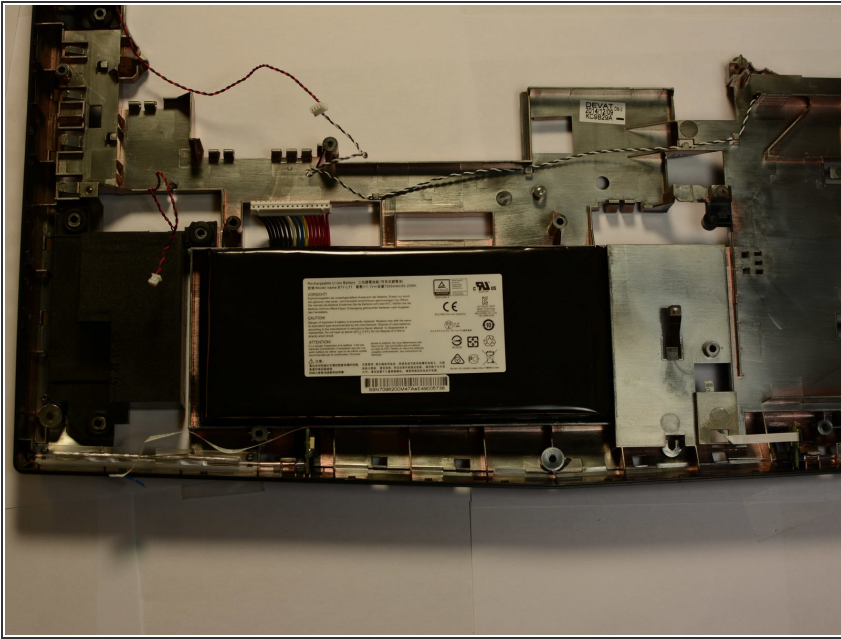
- Remove 15 5mm Phillips #0 screws and remove inner case.
- ⓘ Case may take some force to remove, but don't apply excessive force or you risk breaking the plastic connector tabs.

## Step 8



- Use card or other flat object to remove battery from housing.
- ⚠ Be extremely careful removing the battery. If punctured, hazardous chemicals can be released, or the battery could catch fire or even explode.

## Step 9



- replace 11.1v, 7500mah Li-ion battery, MSI part number: BTY-L77, with equivalent battery, and bind to case with adhesive.

## Step 10 — After step reversal!



- Run MSI Battery Calibration to make sure the firmware can see the new batteries cycle high low voltages.

To reassemble your device, follow these instructions in reverse order.