



MSI GT72 2QE Dominator Pro CD Drive Replacement

Removing the CD drive from the MSI GT72 2QE Dominator Pro.

Written By: Ankit Maurya



INTRODUCTION

CD drive not working properly? CD drive not functioning properly and refusing to come out? This guide will take you through how to remove the CD drive.



TOOLS:

- [Phillips #0 Screwdriver](#) (1)
 - [iFixit Opening Tools](#) (1)
-

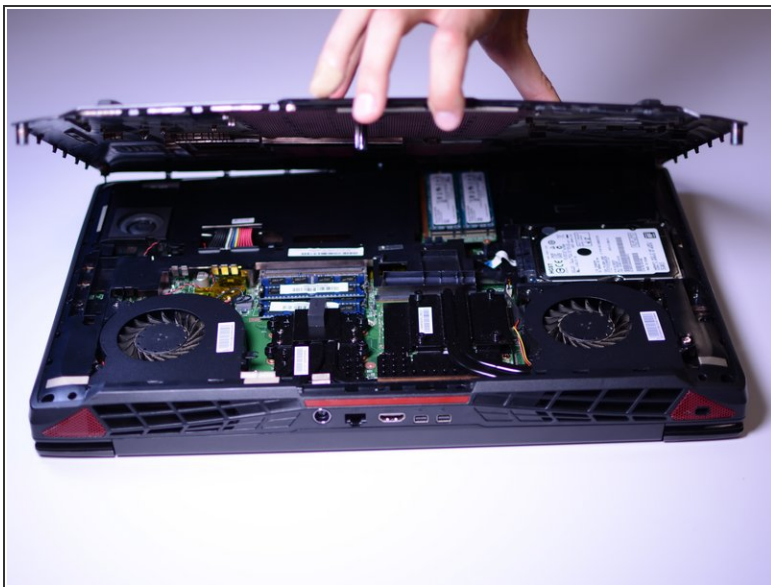
Step 1 — CD Drive



- Remove the indicated seven (7) 6 mm Phillips #0 screws for the back cover.

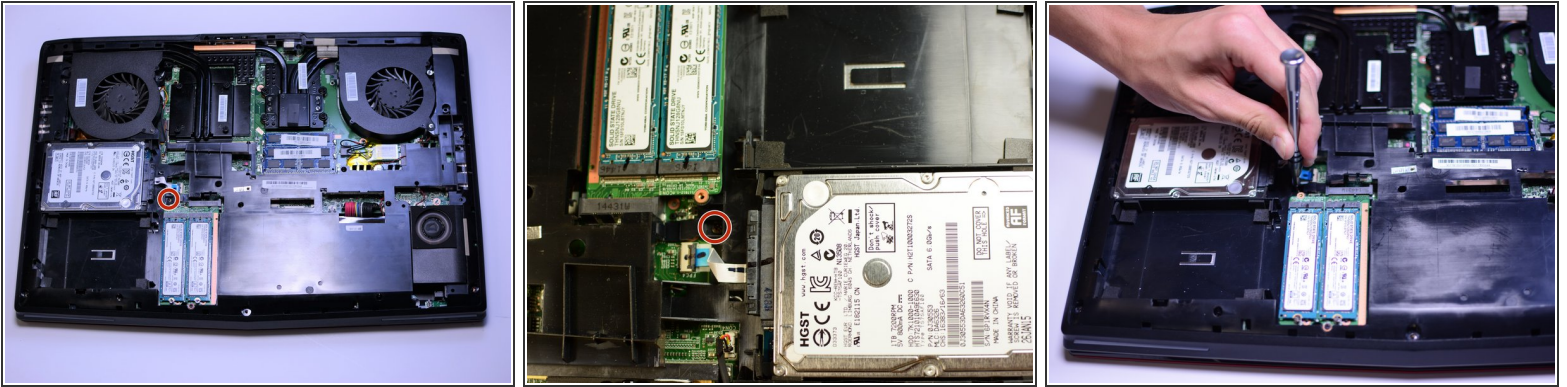
i The same PHO screwdriver bit can be used throughout all the steps.

Step 2



- Lift the back cover using the tab to expose the hardware beneath.

Step 3



- Remove the indicated 5mm Phillips #0 screw.

⚠ This is the only screw holding the CD drive in place. Do not lose it.

Step 4



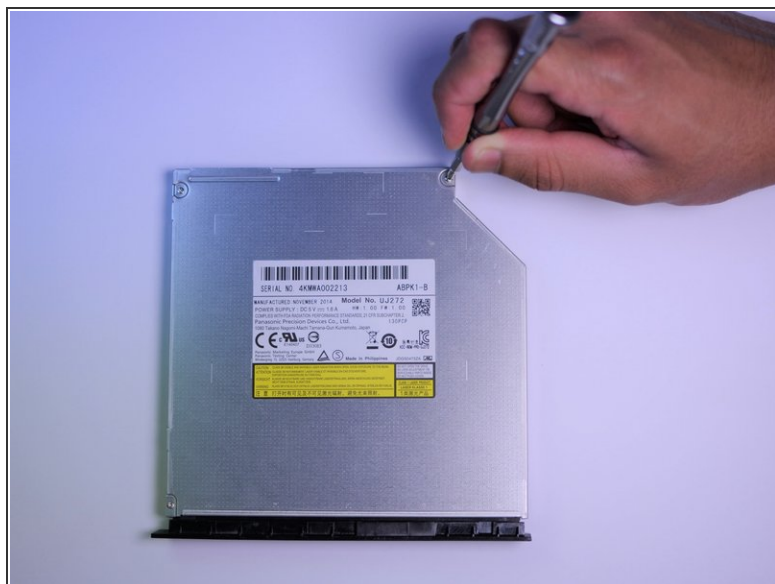
- Using the plastic opening tool, pull out the CD drive.

Step 5



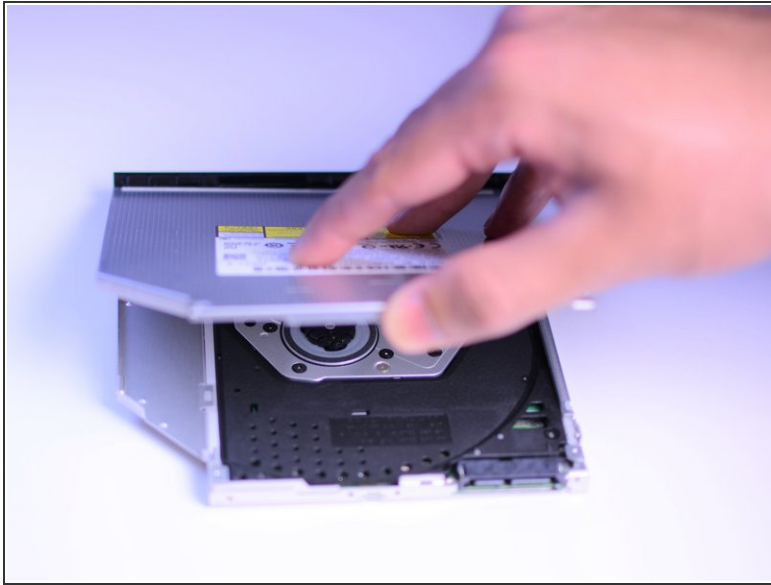
- Remove the indicated 4mm Phillips #0 screw and metal hinge.

Step 6



- Remove the three (3) indicated 2mm Phillips #0 screws.

Step 7



- Lift metal cover gently, using the tab like indent located where the arrow is pointed.
- This should expose the inside of the CD drive.

To reassemble your device, follow these instructions in reverse order.