



# MSI GT72 2QE Dominator Pro Hard Drive and SSD Replacement

How to remove and replace the hard drive and Solid State Drives.

Written By: Colin Harrop



---

## INTRODUCTION

Is your computer running out of storage? Did your hard drive or SSD fail and need to be replaced? Follow this guide to replace the hard drive and SSD in the MSI Dominator GT72 2QE.

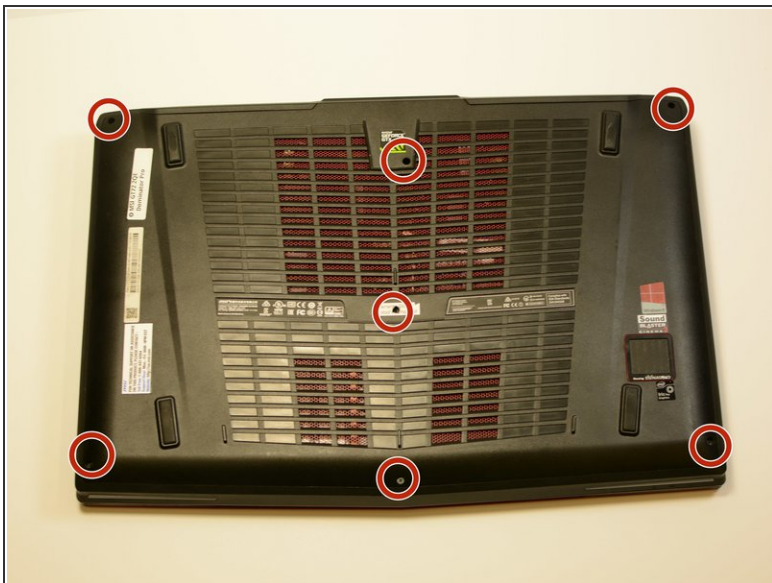
---



### TOOLS:

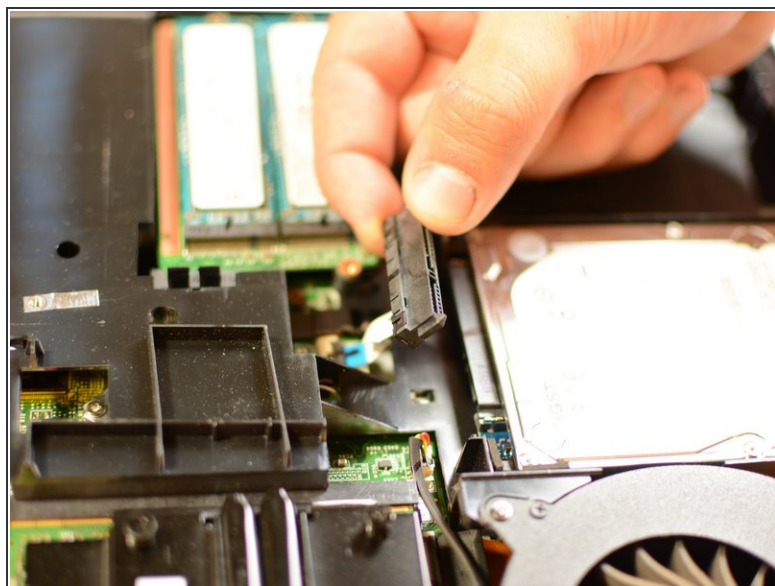
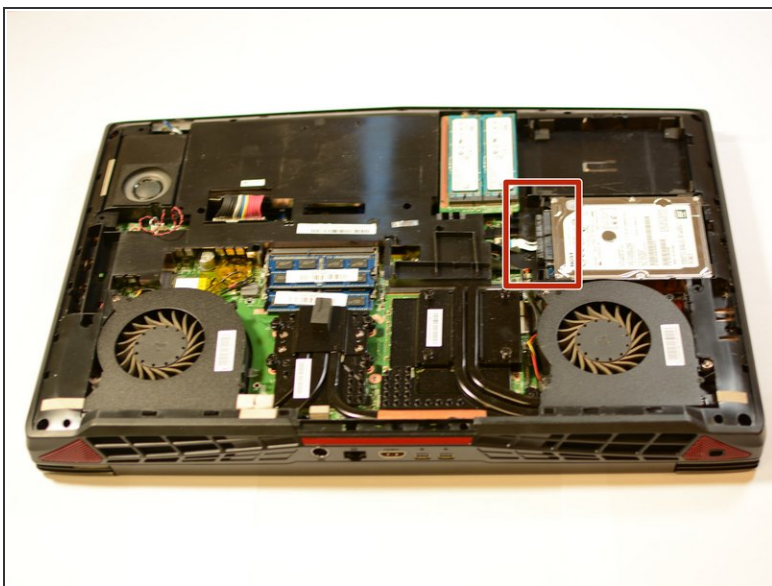
- [Phillips #0 Screwdriver](#) (1)
-

## Step 1 — Hard Drive and SSD



- Remove the seven 6mm #0 Phillips Head screws on the bottom of the device.
- Remove the bottom to access the inside.

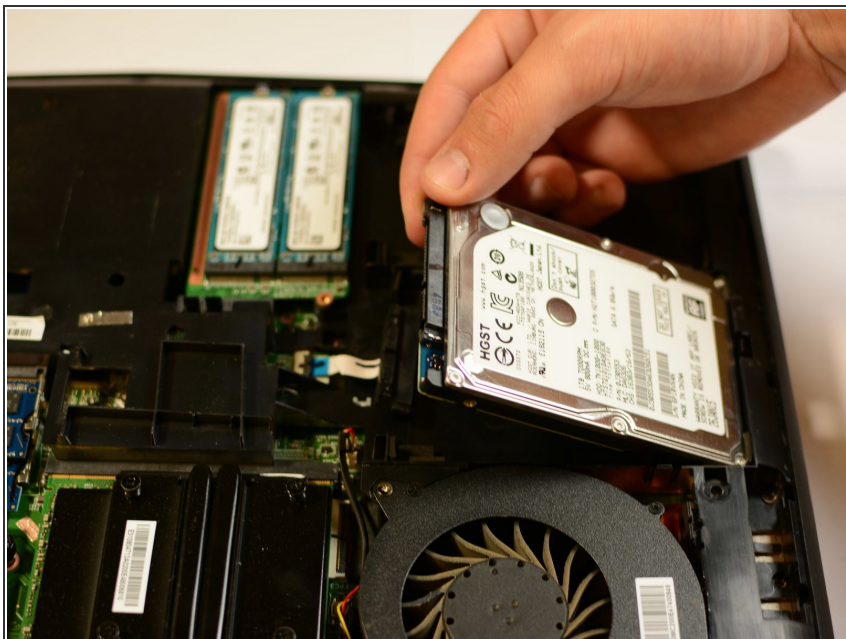
## Step 2



- Disconnect the SATA cable from the hard drive.

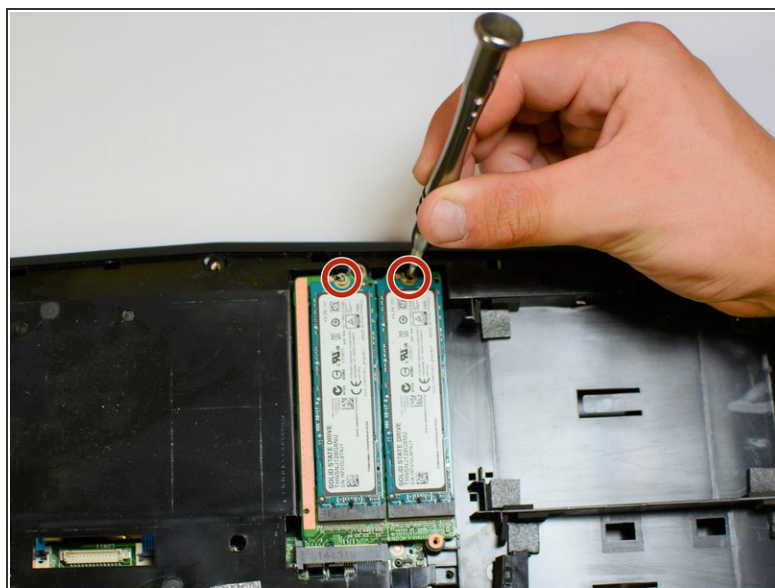
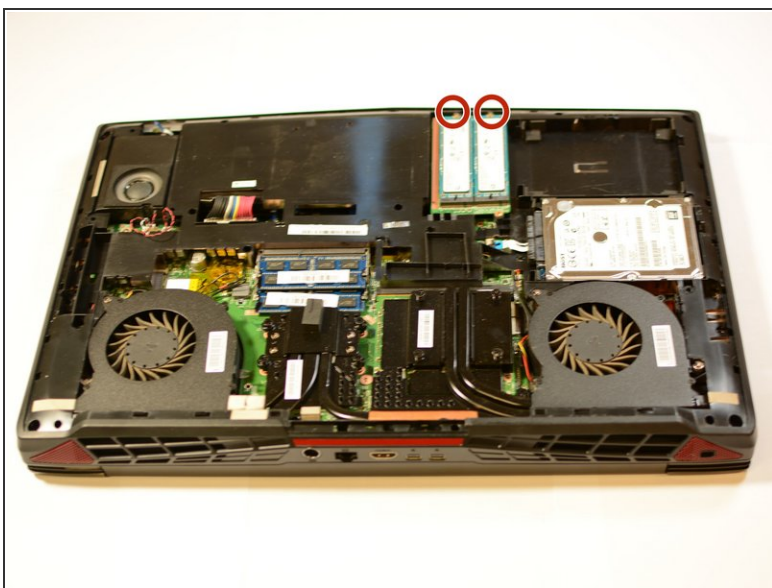


### Step 3



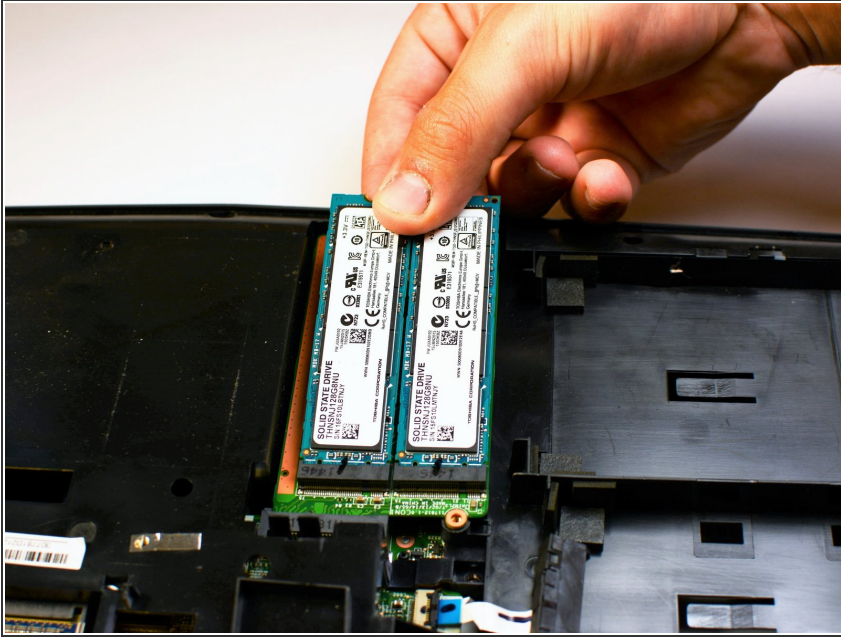
- Pull out the hard drive.

### Step 4



- Remove the two 6mm #0 Phillips head screws securing the two SSDs.

## Step 5



- Pull the SSDs away from its slot.
- ⚠ Be sure to pull parallel to the PCB.  
Do not pull upward at an angle.

To reassemble your device, follow these instructions in reverse order.