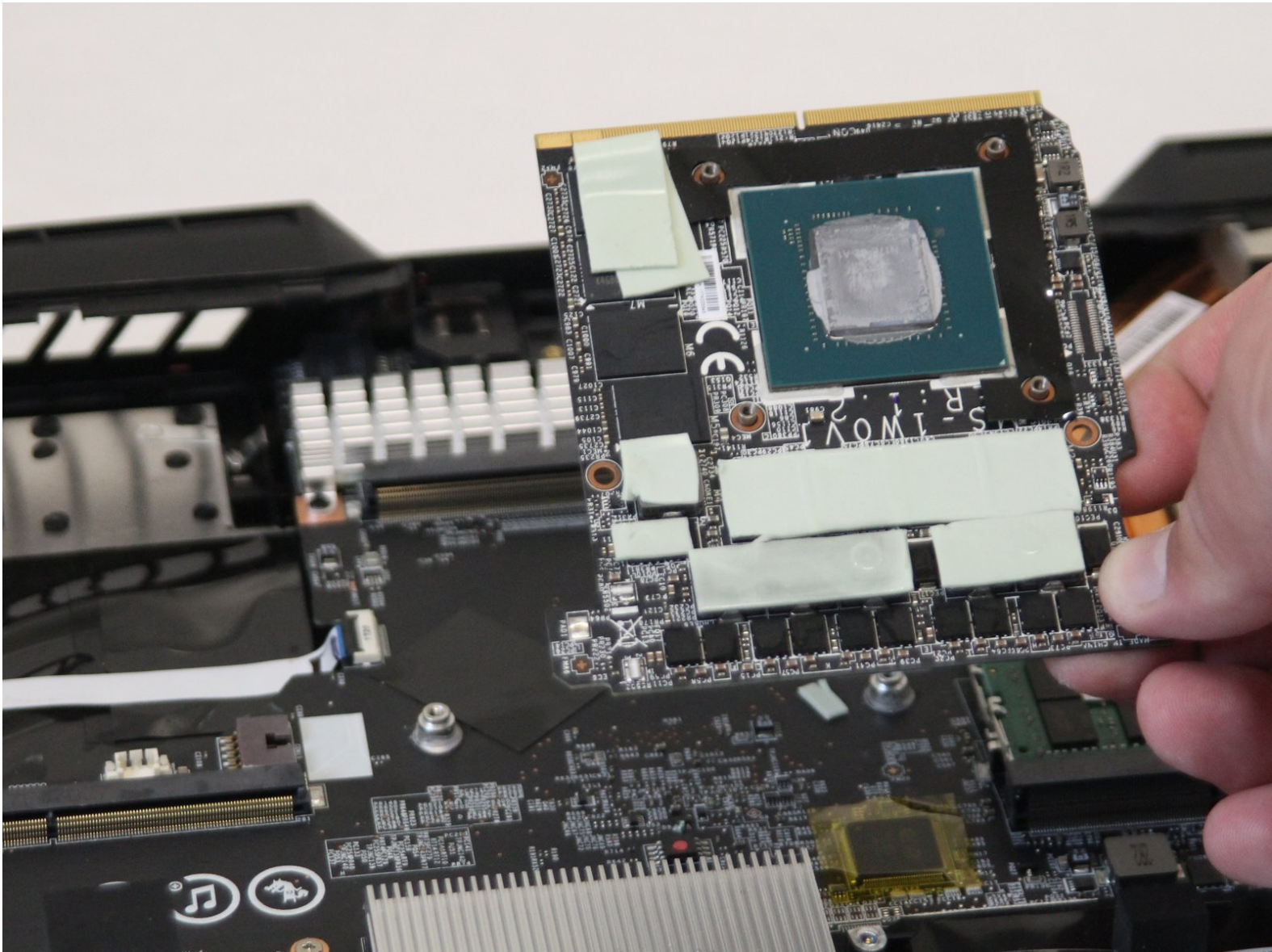




# MSI GT75VR 7RF Titan Pro CPU/GPU Chip Replacement

How to access and remove the CPU/GPU unit from your MSI Titan Pro MS-17A2 laptop.

Written By: Alex Wester



---

## INTRODUCTION

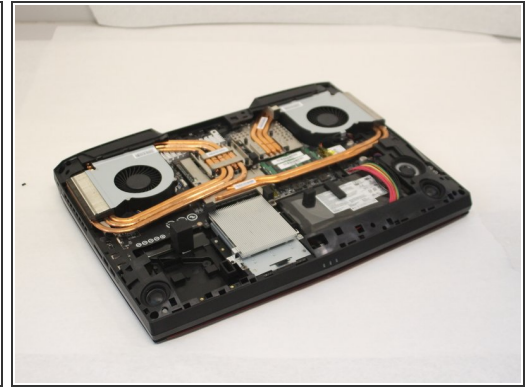
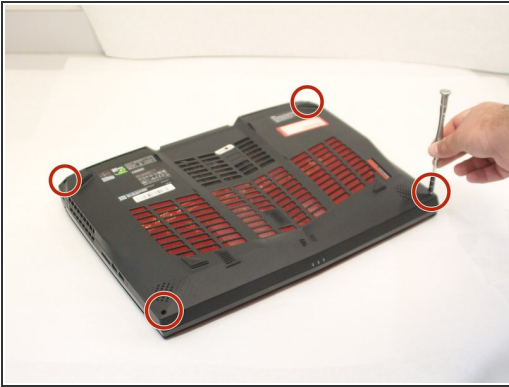
Central processing units and Graphic processing units can be a crucial component to your computer system. Both of these units can help with the overall display and speed of the computer. Over time CPU and GPU will become outdated or be corrupted. This will lead to the replacement of the CPU and GPU.



### TOOLS:

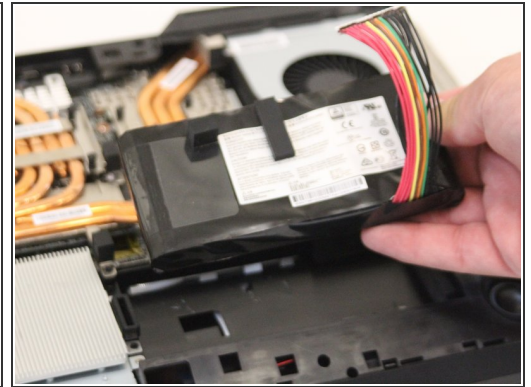
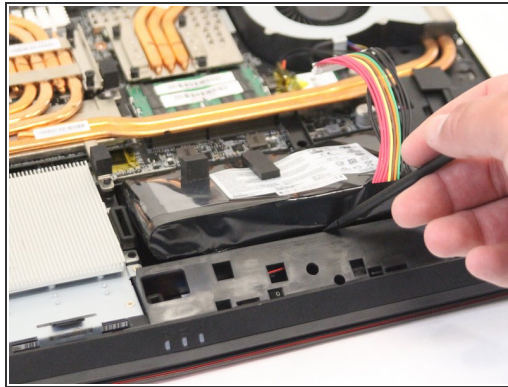
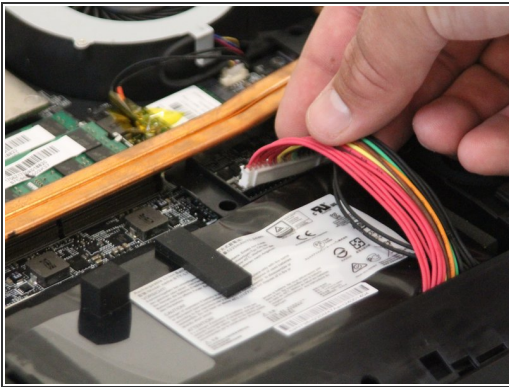
- [Phillips #0 Screwdriver](#) (1)
  - [Spudger](#) (1)
-

## Step 1 — CPU/GPU Chip



- Remove the four screws from the rear laptop cover using the Phillips #0 screwdriver. The screws are 0.5 inches long.
- Use the black nylon spudger to pry the cover off the laptop.

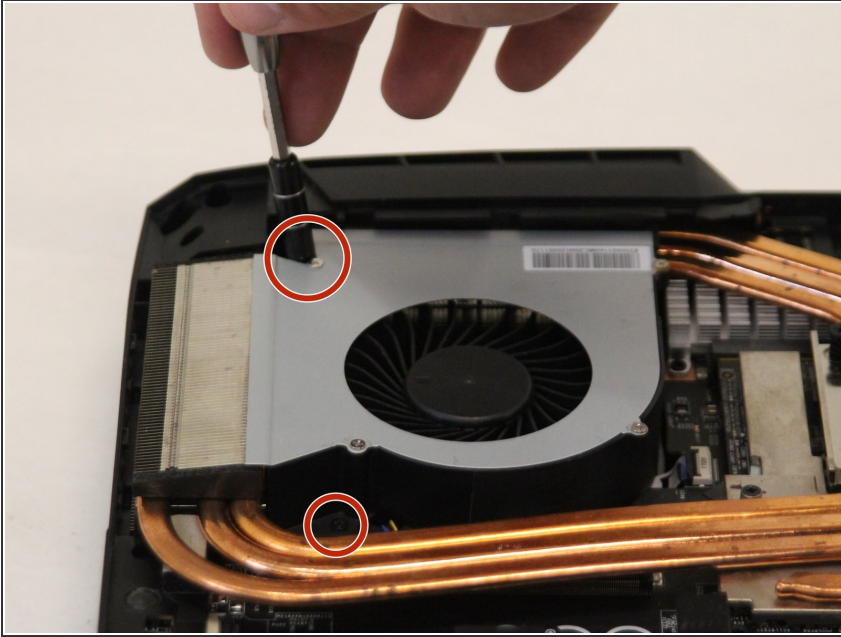
## Step 2



- Unplug the battery plug from the unit. Lift the battery out of the housing by prying it from the adhesive using the black nylon spudger.

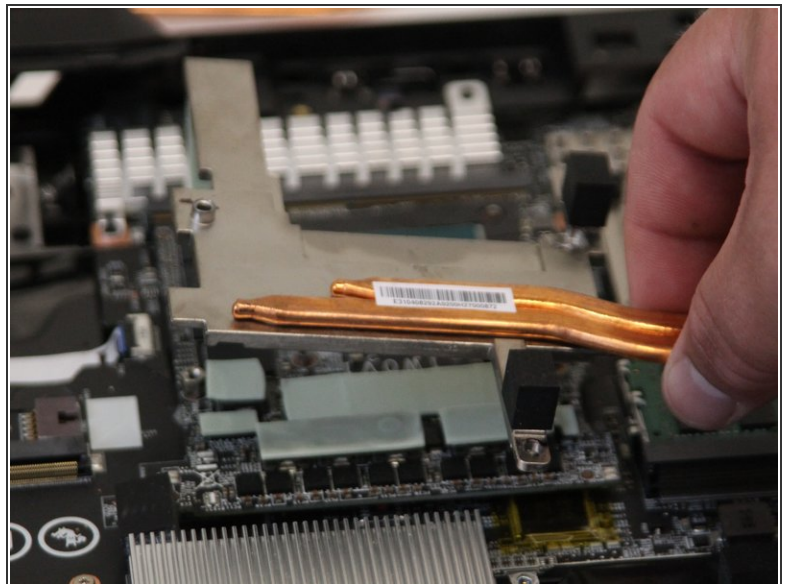
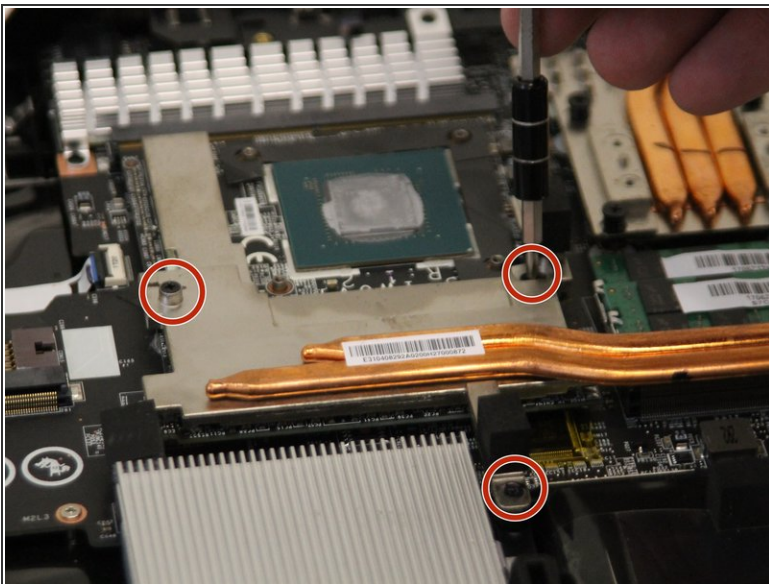


### Step 3



- Remove the screws using the Phillips #0 screwdriver. Disconnect the left side fan from the unit as shown. The screws are 0.25 inches long.

### Step 4



- Unscrew the CPU cooling plate using the Phillips #0 screwdriver. Lift the cooling pipes away from the unit. Screws are 0.15625 inches long.

## Step 5



- Unscrew both standoff nuts from the chip using the Phillips #0 screwdriver. Then lift and remove the unit from the laptop.

To reassemble your device, follow these instructions in reverse order.