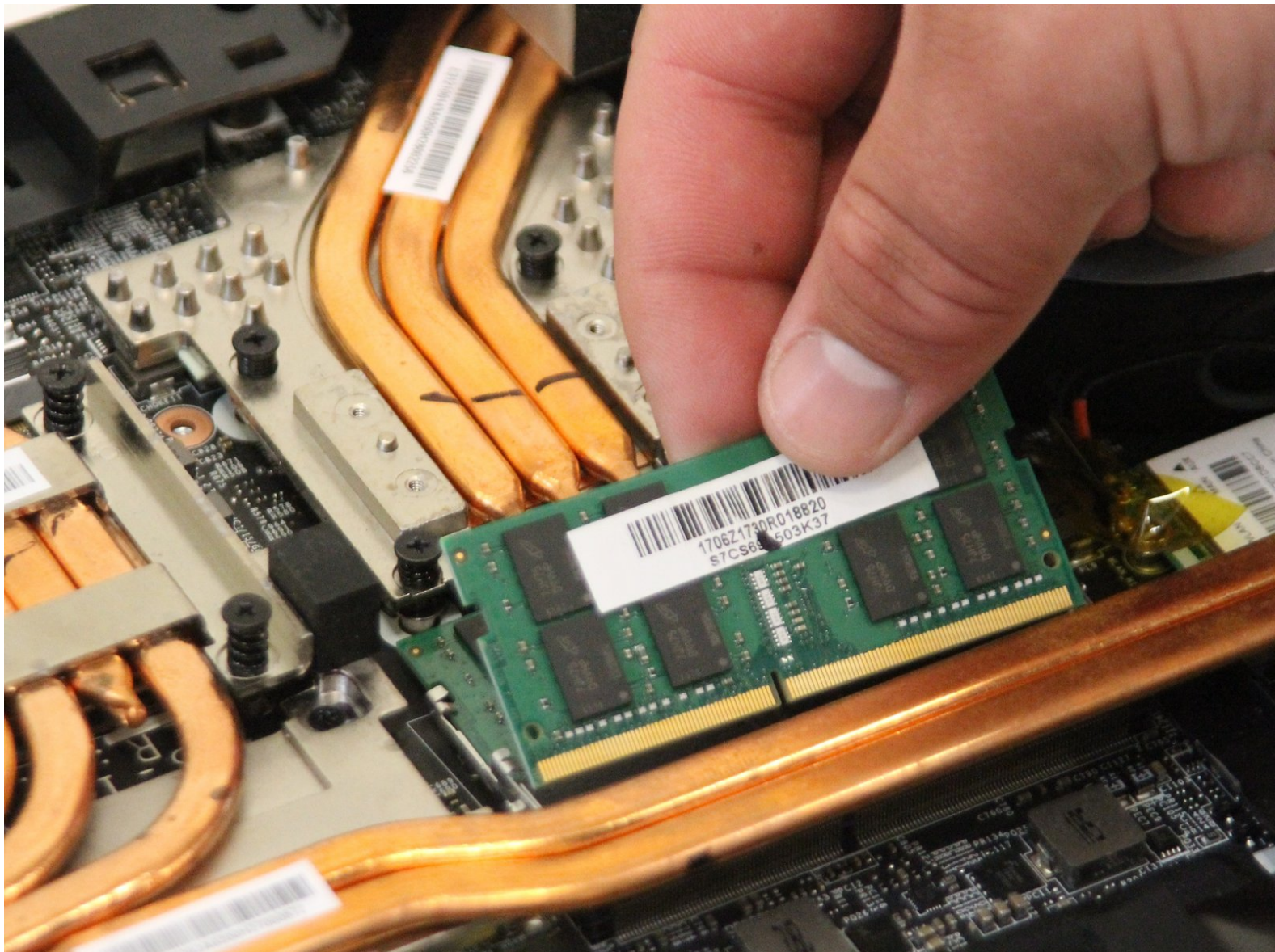




MSI GT75VR 7RF Titan Pro RAM Card Replacement

This guide covers the process for identifying and replacing a RAM card from your laptop.

Written By: Jack Crumpton



INTRODUCTION

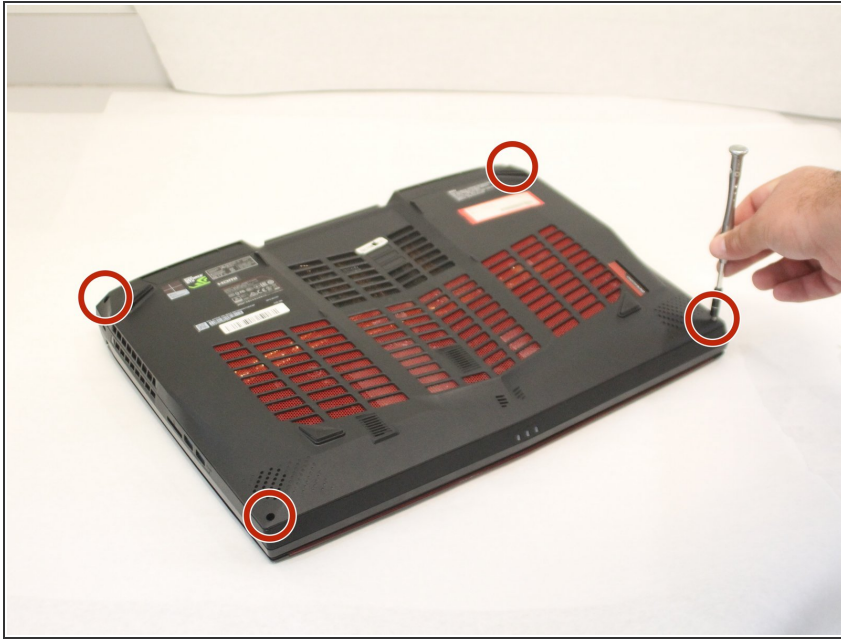
RAM (Random Access Memory) is a crucial component to your computer system. Sometimes, a RAM card can become corrupted. To fix this, the corrupted RAM card must be replaced.



TOOLS:

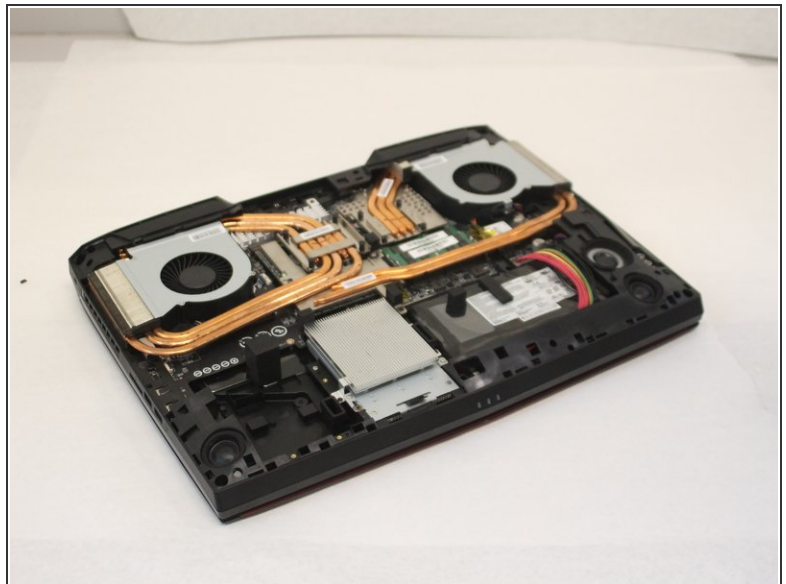
- [Phillips #0 Screwdriver](#) (1)
 - [Spudger](#) (1)
-

Step 1 — RAM Card



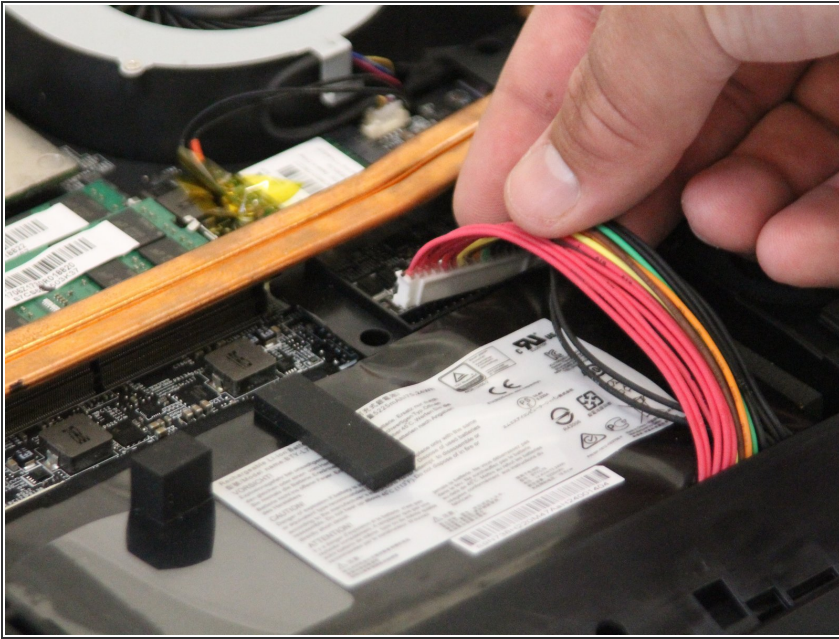
- Unscrew each of the four screws using the Phillips #0 head on the back of the laptop case. The screws are 0.5 inches in length.

Step 2



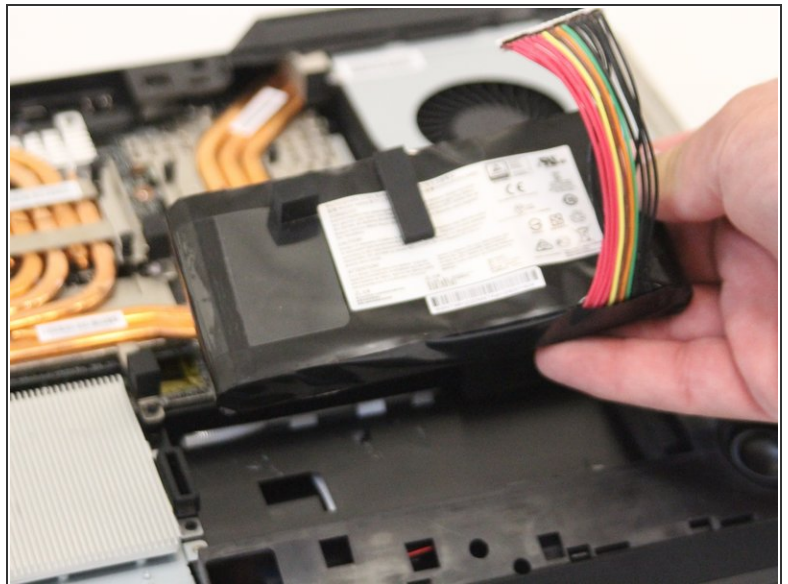
- Pop the back cover off of the laptop using the black nylon spudger.

Step 3



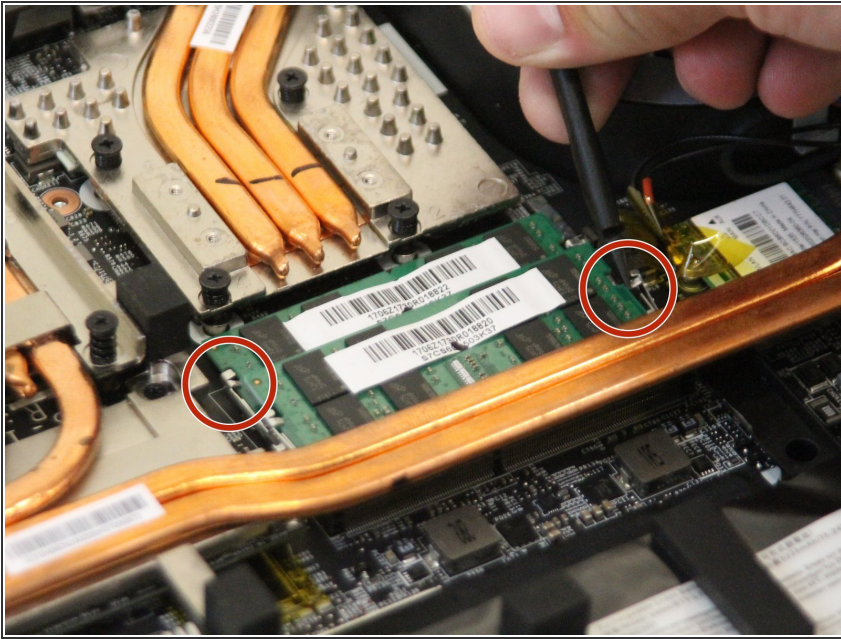
- Disconnect the battery cable.

Step 4



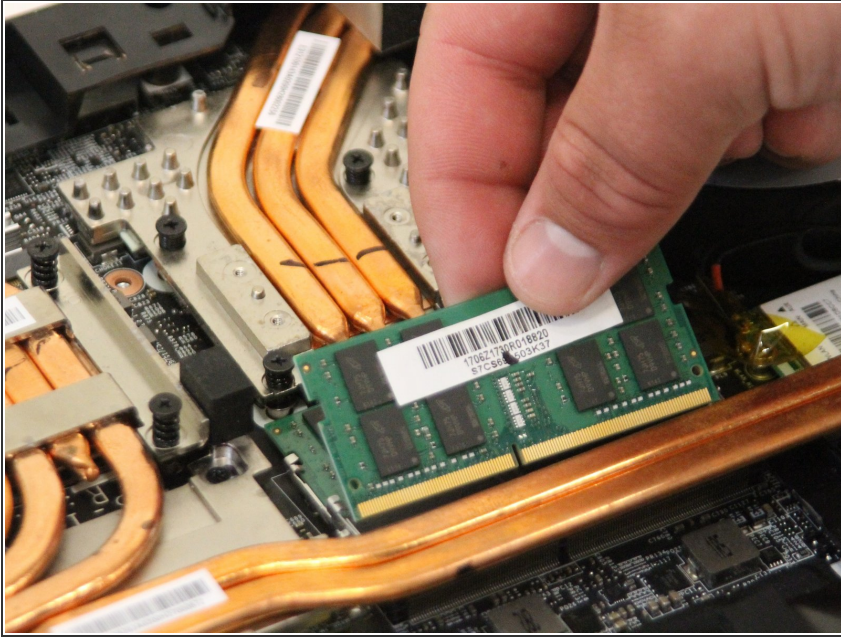
- Pry the battery pack up with the black nylon spudger.

Step 5



- Pop the metal tabs on each side of the RAM using the black nylon spudger.

Step 6



- Lift and remove RAM card by hand. Replace each RAM card and test them individually. If your computer encounters a RAM error with only one card inserted, you can confirm that card is corrupted.

To reassemble your device, follow these instructions in reverse order.