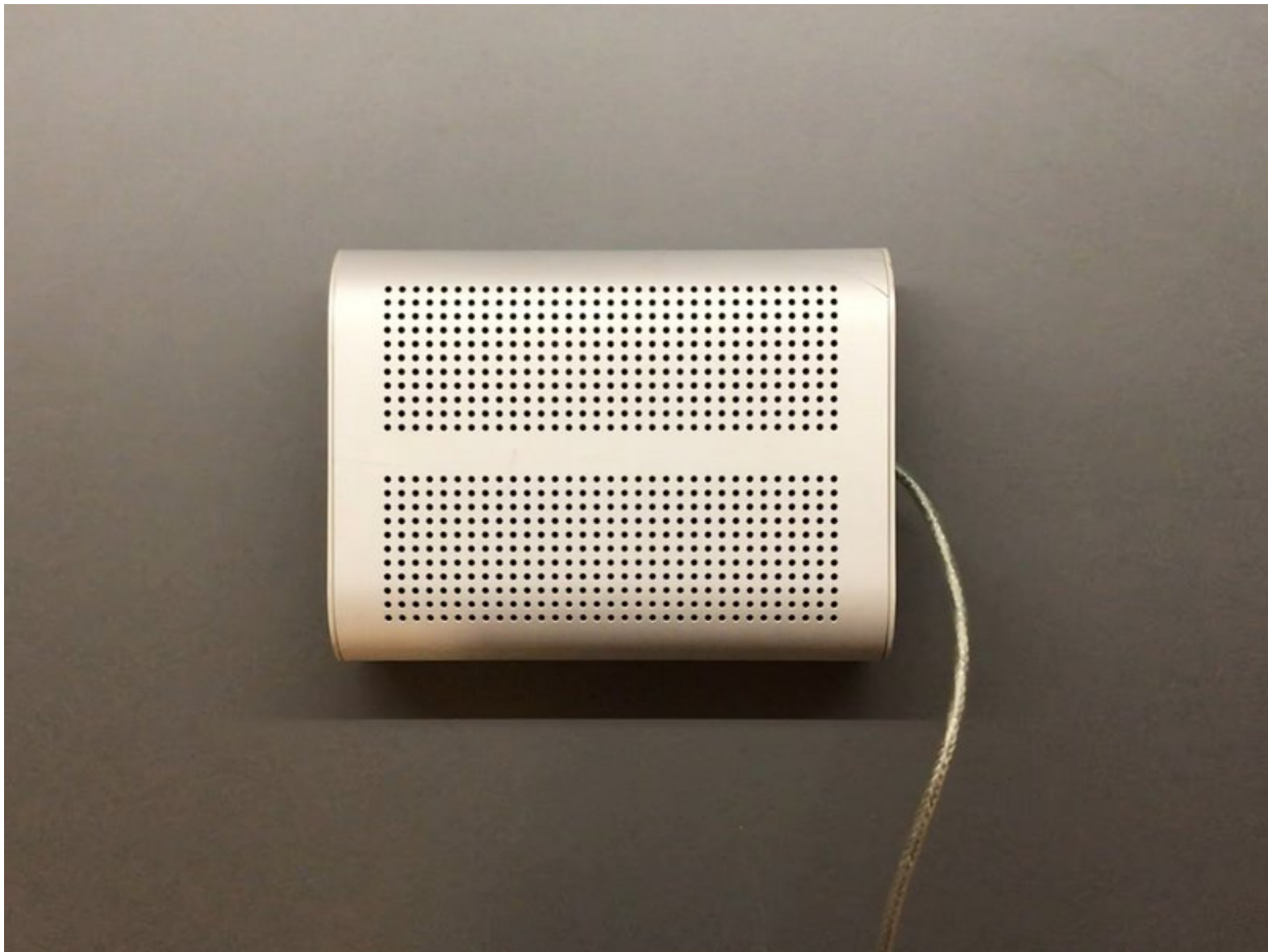




Mac Cube G4 205W Power Supply Disassembly

The Mac Cube Power Supply is quite easy to open once you know where the clips holding the two edge panels are. Some nifty picking is required, and 5 mintues

Written By: Darie H

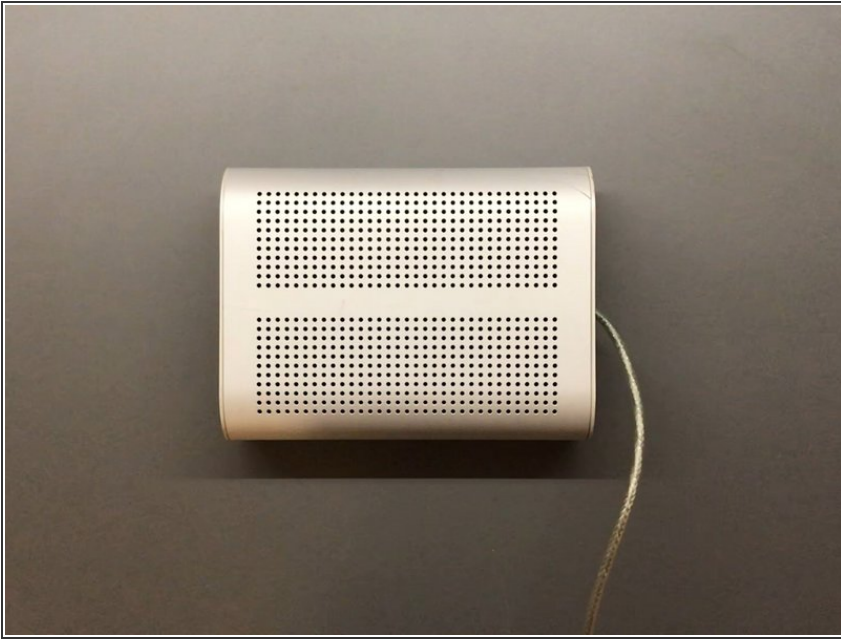




TOOLS:

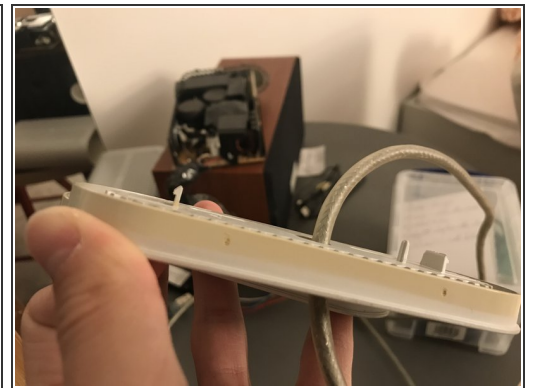
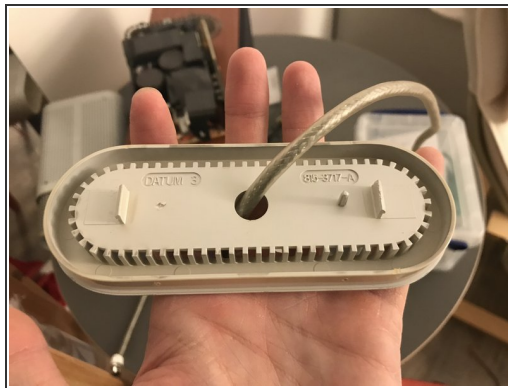
- Drill + Stepped Drill Bit, Flat-Head Screw Driver, Philips Screwdriver (1)

Step 1 — Mac Cube G4 205W Power Supply Disassembly



- First things first : you'll need a reasonably dead Mac Cube power supply

Step 2



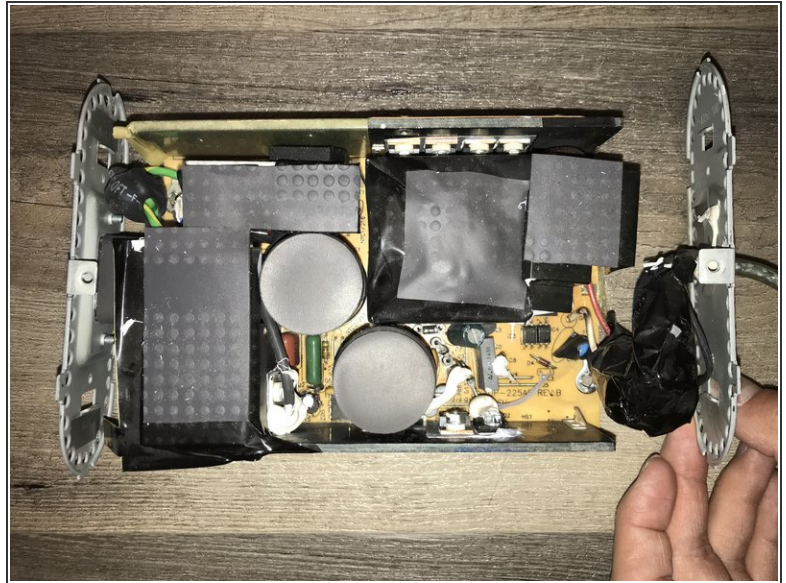
- The first step is to separate these two end-caps
- Each of them has 2 very strong (and equally brittle) clips holding it in place

Step 3



- The only way to access these clips is through the ventilation holes, .. how convenient !
- It's enough to unhook 1 clip per side, and one of the clips cannot be unhooked, as it's blocked by some black paper plastic rubber thingy
- ⚠ It is highly recommended you go in through the marked holes (those are the largest open areas inside the PSU anyway)
- In case you have something thin and strong enough to do this without enlarging the holes: please leave a comment down below !
- I drilled through the existing holes to make them large enough for a fittingly stiff screw driver
- ⚠ BEWARE : this plastic is incredibly brittle and will crack very easily; using a stepped drill bit for the plastic, then a regular bit for the metal worked best

Step 4

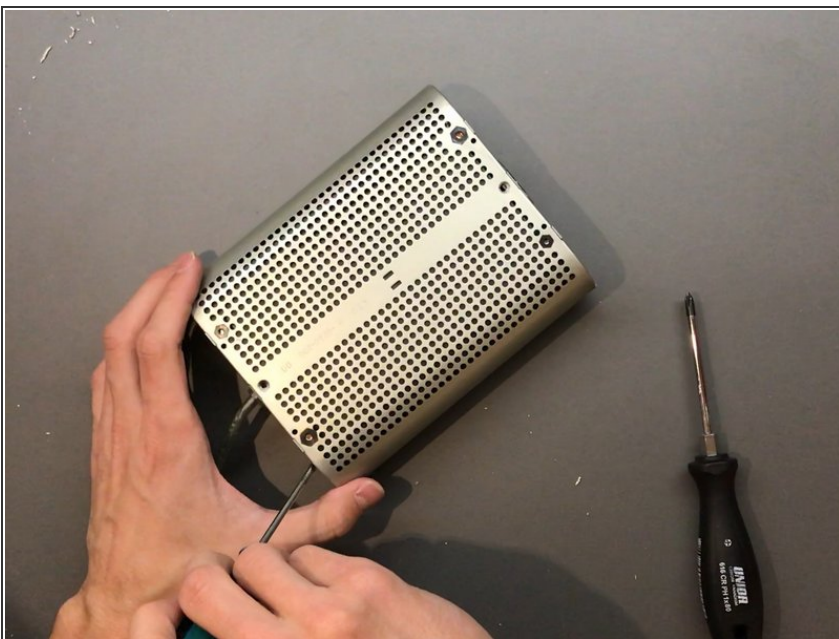


- Once you've enlarged your holes, it's just a matter of carefully prising these clips free

⚠ Again, be careful, they're very brittle

- Since peeping through a 3mm hole doesn't give one the best visibility, here's also a photo of the power supply board, so you know what to look out for ;)

Step 5



- Correctly assuming you've gotten rid of all the plastic surrounding the metal chassis, it's high time to open a bottle of something !
- Unclip metallic end-caps with a relatively skinny flat-head screw driver

Step 6



- Now, the last step is to unhook the two halves of the metal chassis from each other - with the correct motion, this happens very easily
 - Firmly press on the top half (the bottom has the PCB laying right against it) whilst prising with a flat-head screw driver at the seam: there's 3 metal clips to unhook on each side
 - And you're done !
- ☒ Feel free to share what problem yours had and how you've fixed it down in the comments :)

Congrats !