



# Mac Mini Late 2014 Drive Tray Assembly Replacement

Prereq to remove the hard drive and SSD tray.

Written By: Sam Goldheart



---

# INTRODUCTION

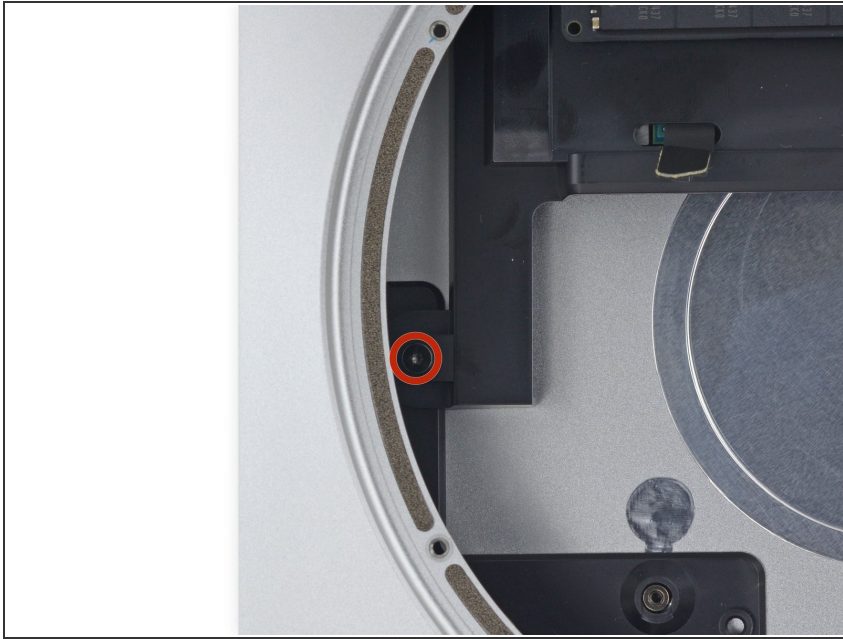
Prerequisite only.



## TOOLS:

- [T6 Torx Screwdriver](#) (1)
-

## Step 1 — Drive Tray Assembly



- Remove the single 8 mm T6 screw securing the drive tray.

## Step 2



- Lift the drive tray up out of the Mac mini.

To reassemble your device, follow these instructions in reverse order.