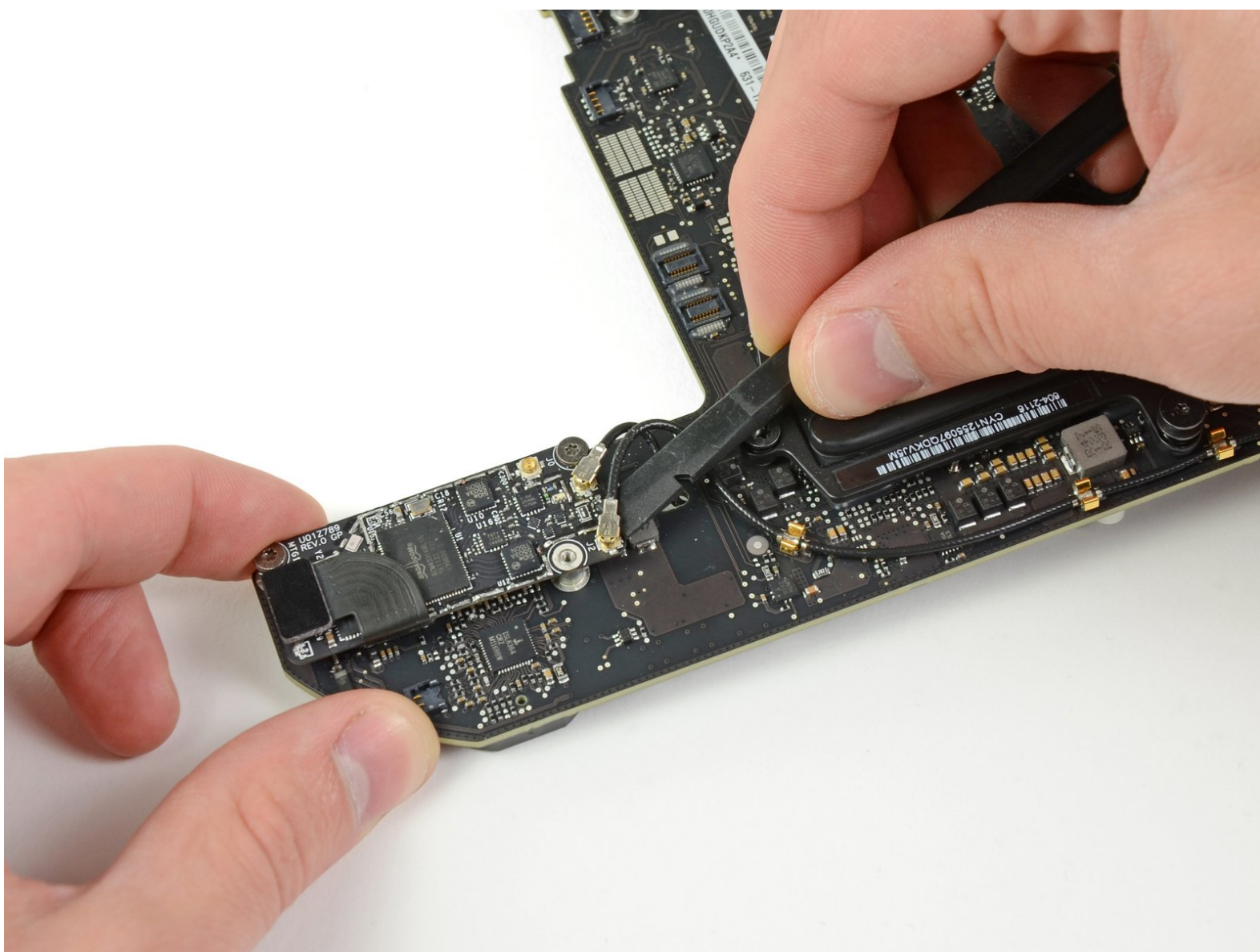




Mac Mini Mid 2011 AirPort/Bluetooth Antenna Connectors Replacement

Written By: Walter Galan



INTRODUCTION

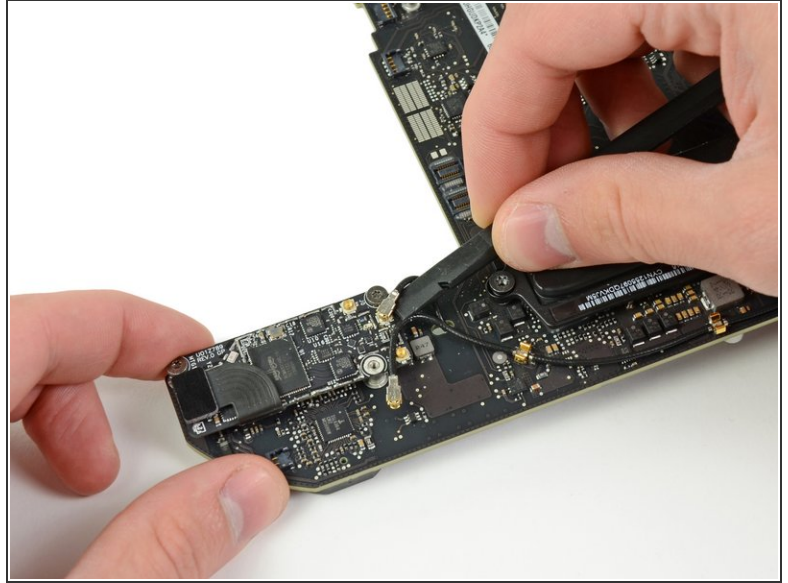
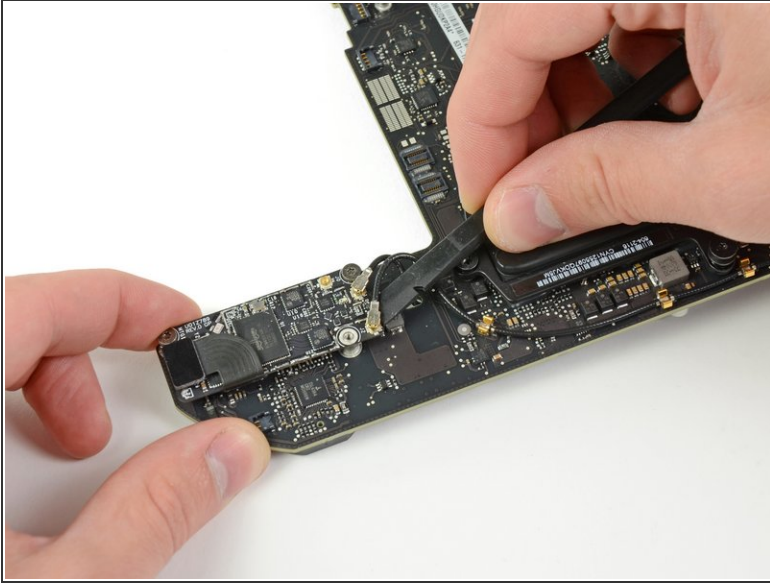
Prereq only. Disconnect connectors only.



TOOLS:

- [Spudger](#) (1)
-

Step 1 — AirPort/Bluetooth Antenna Connectors



- Use the flat end of a spudger to pry both antenna connectors up from their sockets on the AirPort/Bluetooth board.

To reassemble your device, follow these instructions in reverse order.