



Mac Pro 2009-2012 Case Replacement

Replacing the case for the Mac Pro 2009-2012

Written By: remitouch



INTRODUCTION

If your Mac Pro has a scratched or damaged case, here is a tutorial to completely replace it.

Everyone can do it, but the disassembly and reassembly are very long steps. Patience is the key to success.



TOOLS:

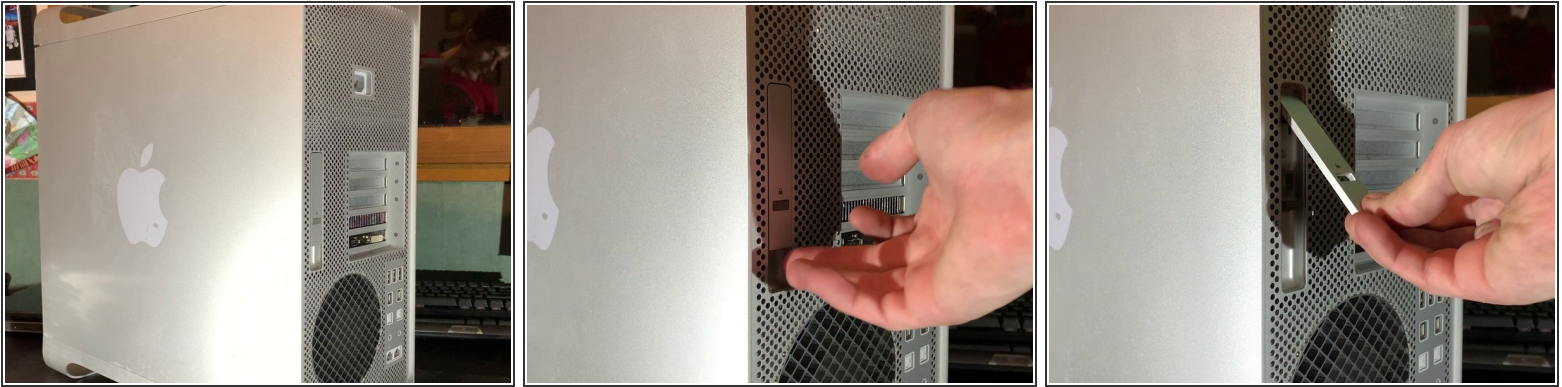
- [New Item](#) (1)



PARTS:

- [New Item](#) (1)

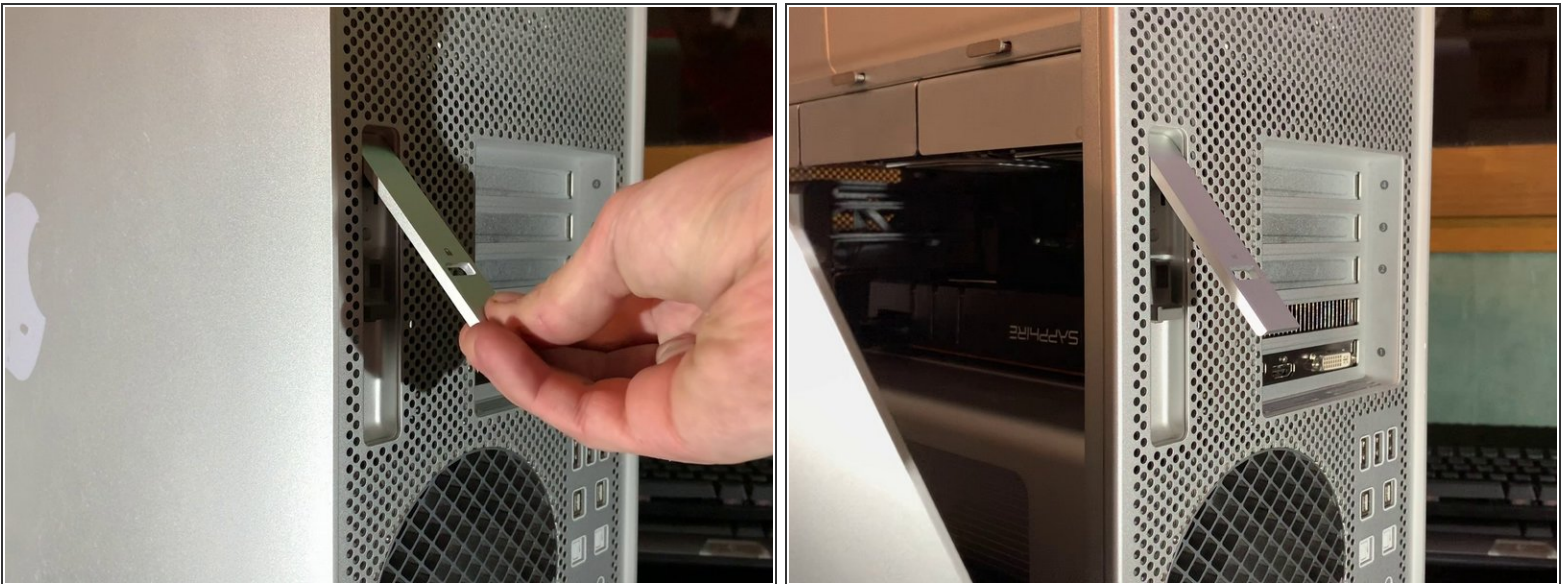
Step 1 — Open the Case



- To open the Mac Pro, you'll have to lift the clip on the back of the case

☒ Leave the clip open during the entire disassembly!

Step 2 — Lift the lateral flap



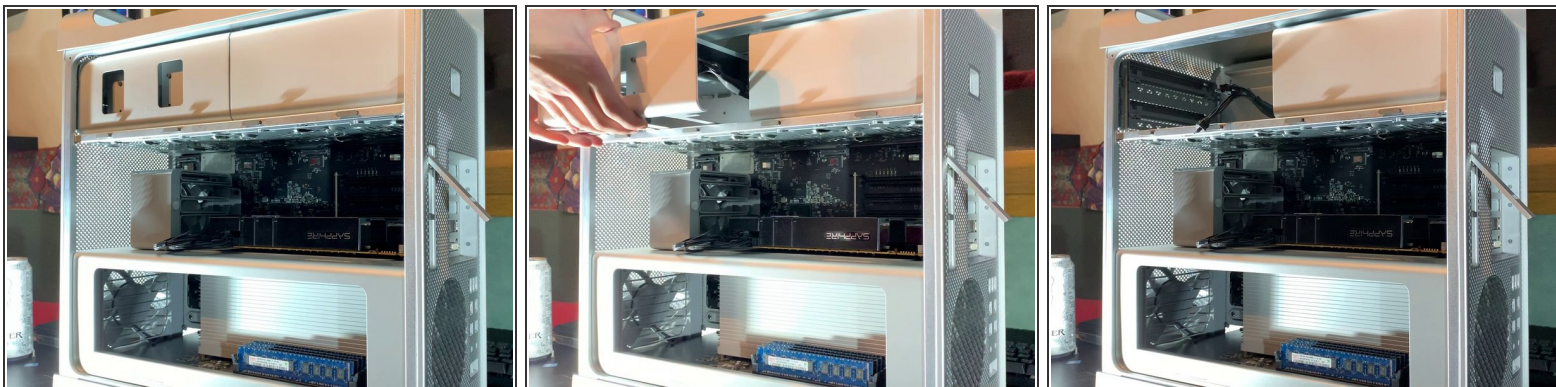
- Having the flap in the high position, the panel should separate from the box without force

Step 3 — Remove the hard drives



- You then have to remove the hard drives. It is simple: pull them towards you with a bit of force.

Step 4 — Remove the DVD drives



- Very simple, pull the DVD drives towards you, it should come out with a little force.

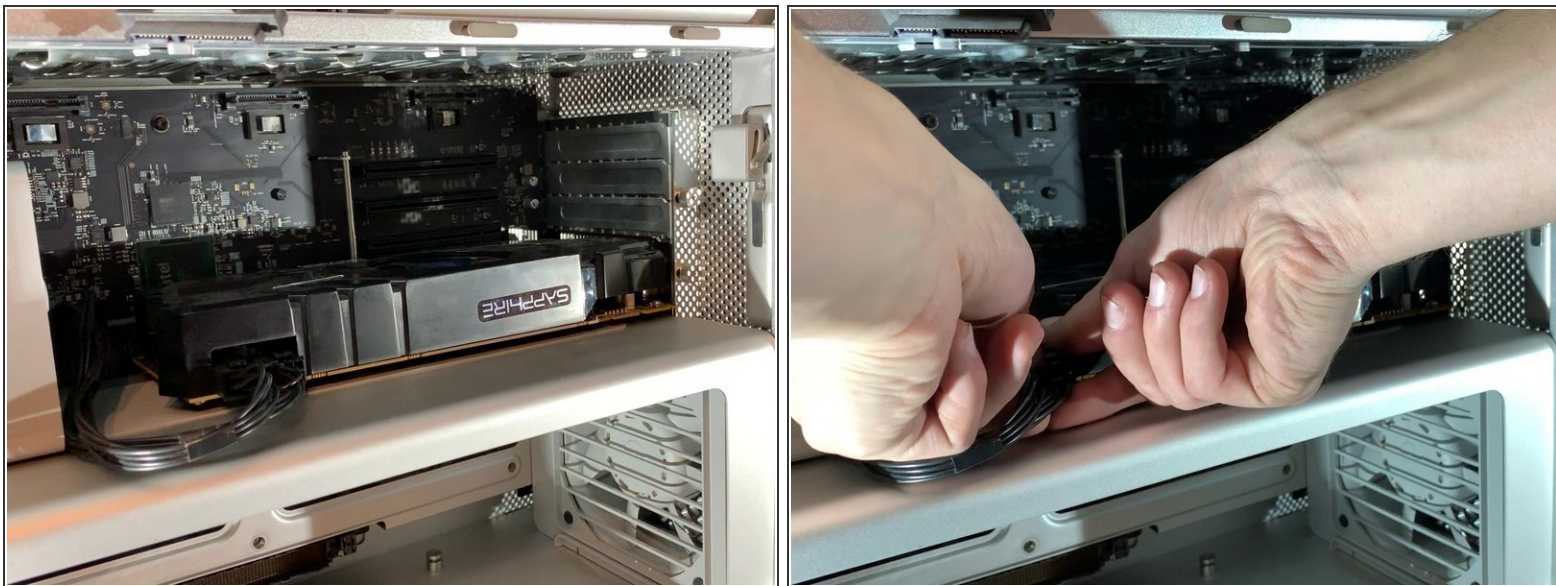
Step 5 — Remove the board



- Press both latches to unlock the bracket
- Then pull it towards you

⚠ Normally this step is done without much force

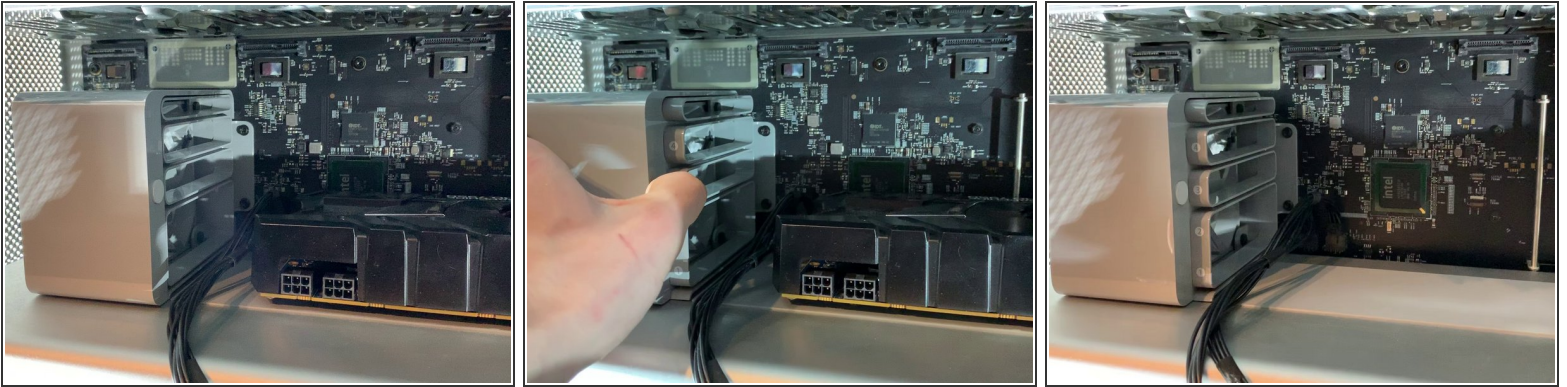
Step 6 — Disconnect the GPU



- Remove the 6 pins or 8 pins connector from your graphics card

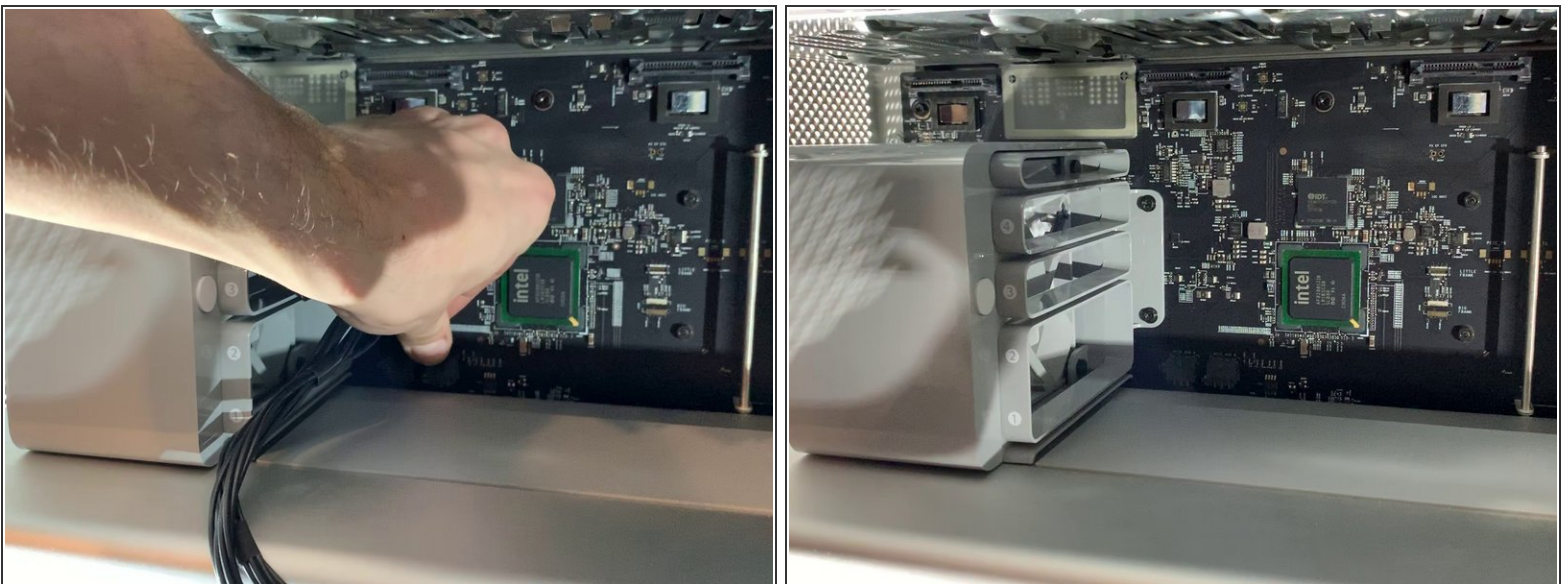
i This step is optional, it will depend on the graphics card of your Mac Pro

Step 7 — Disconnect the GPU power supply (Optional)



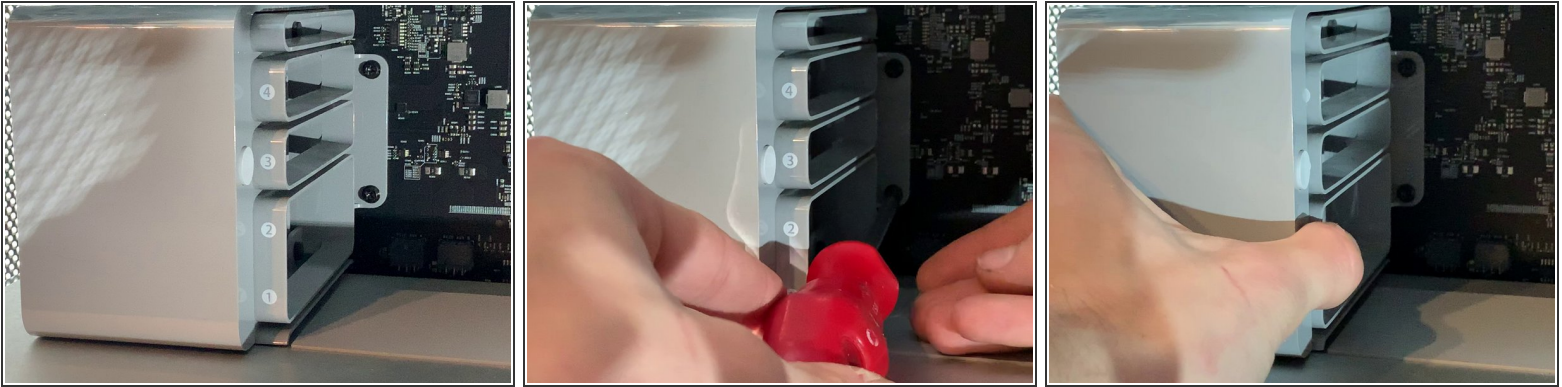
- On the power support there is a button, press it and you can move the power supply to the left (see picture)
 - You have to pull the graphics card towards you to take it out of the box
- i** This step is optional depending on the GPU of your Mac Pro

Step 8 — Disconnect GPU support (optional)



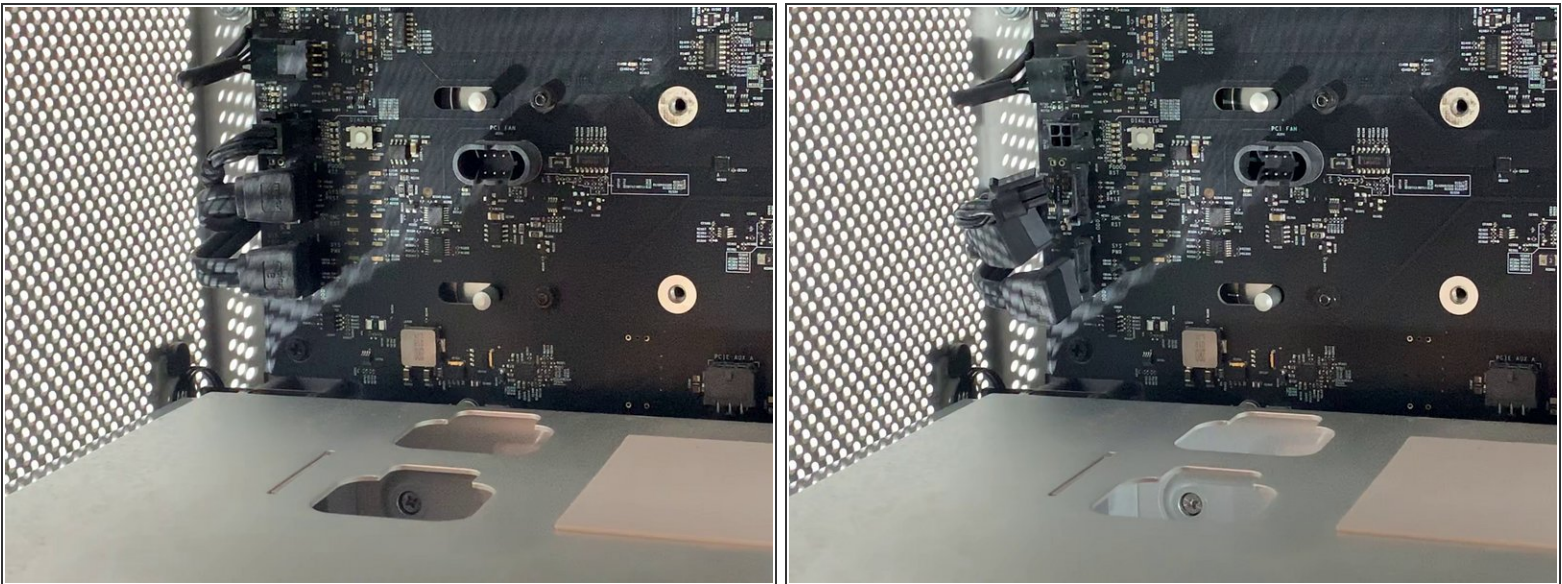
- Disconnect the PCI-e cables from the motherboard
- i** This step is optional depending on your Mac Pro

Step 9 — Take out the PCI-e fan



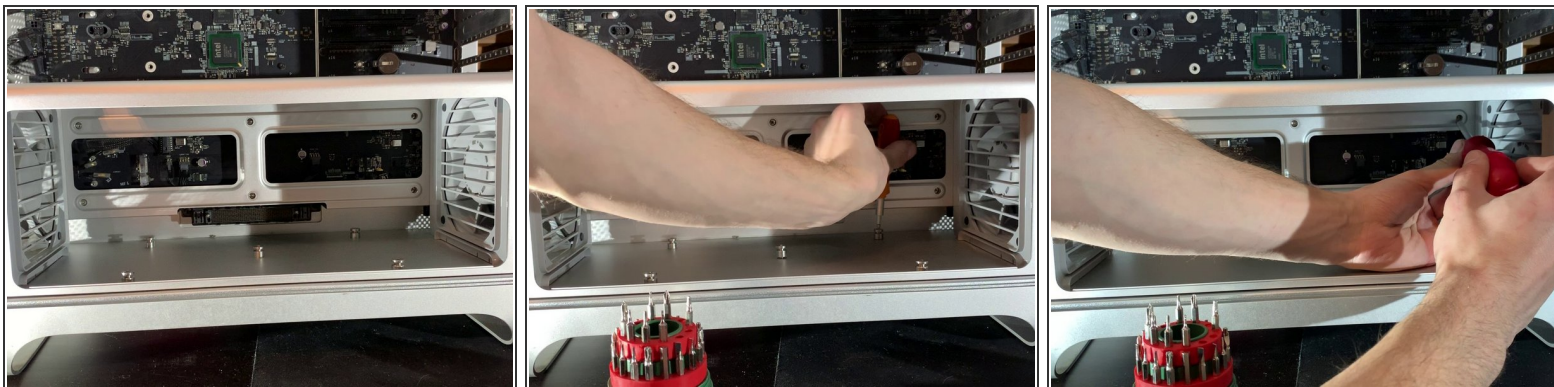
- With a screwdriver unscrew the two screws that hold the fan bracket to the board
- Pull the fan towards you

Step 10 — Disconnect the SATA Cables



- Behind the fan bracket there are 2 SATA cables, a 4 pin mini power supply and a 4 pin fan

Step 11 — Unscrew CPU support



- With a H3.0 screwdriver, unscrew the screws on the bottom of the bracket (photo 2)
- With a Phillips screwdriver, unscrew the screws on the bottom of the case (photo 3)

Step 12 — Remove the CPU Fan



- Remove the clip at the top of the fan
- Pull on the top of the fan a bit.

Step 13 — Remove the CPU Fan




- Similar to the top remove the clip at the bottom and pull out the fan.

Step 14 — Disconnect Fan and Speakers



- Disconnect the 2 x 4pin fan cables and the 1 x 2 pin speaker cable

 Do not forget this step or you risk damaging your connectors on the motherboard and make unusable fans and speaker!

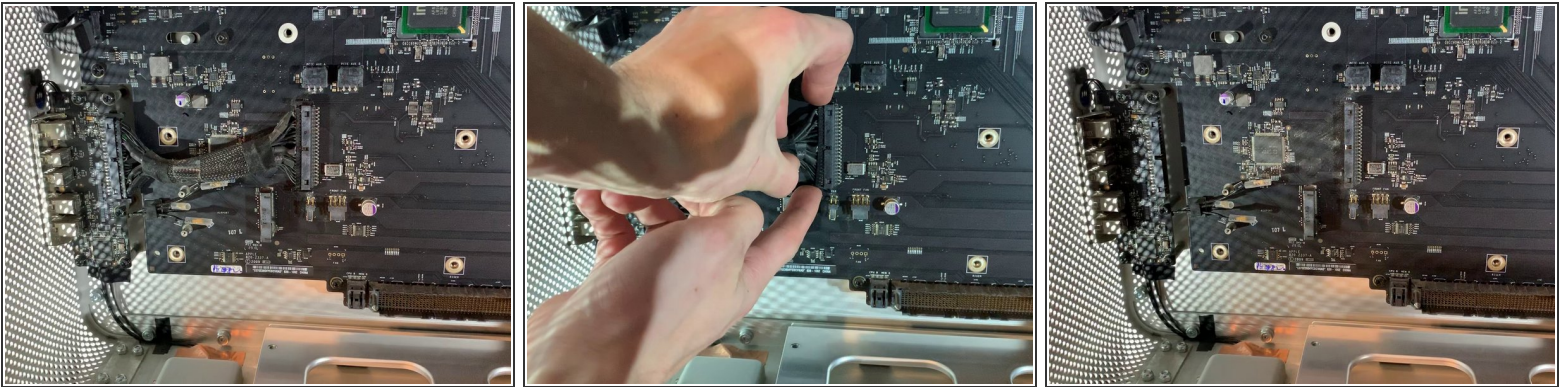
Step 15 — Remove the CPU Support



- Pull the CPU support towards you

⚠ Do not use force during this step, If it does not come out easily ensure the fans are not blocking the exit.

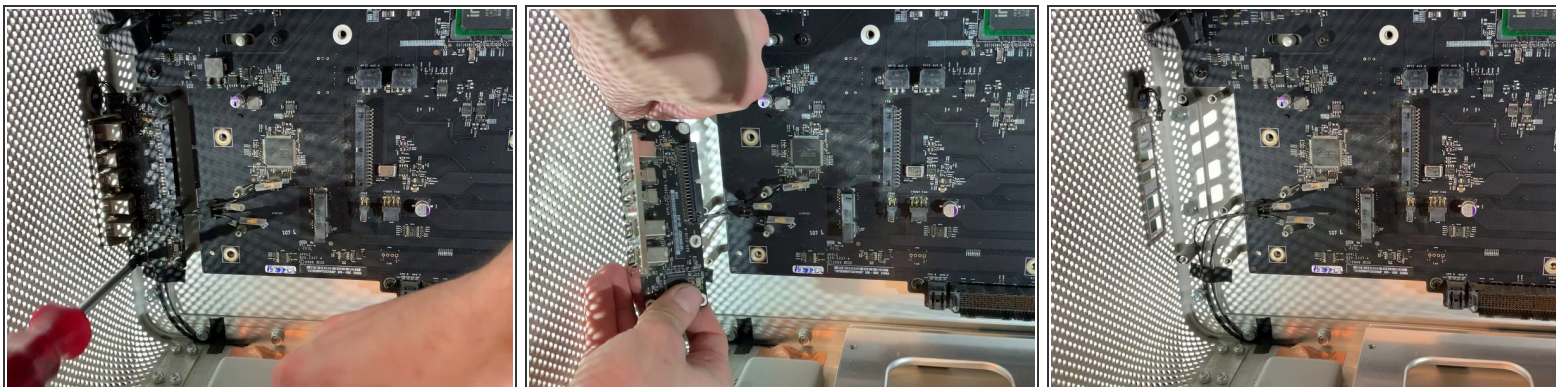
Step 16 — Remove the expansion card connector



- Remove the ribbon that connects the motherboard to the expansion card (USB, Jack, Power Off etc.)

⚠ Attention, it is necessary to remove the cable carefully so as not to bend the pins which are in the connector of the motherboard!

Step 17 — Remove the expansion card



- Unscrew the 6 screws that hold the card in place.

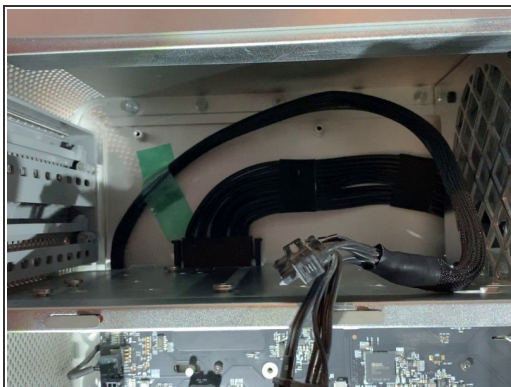
⚠ Be careful to unplug the power cable on the card !!

Step 18 — Remove the cover




- unscrew the two screws and remove the cover

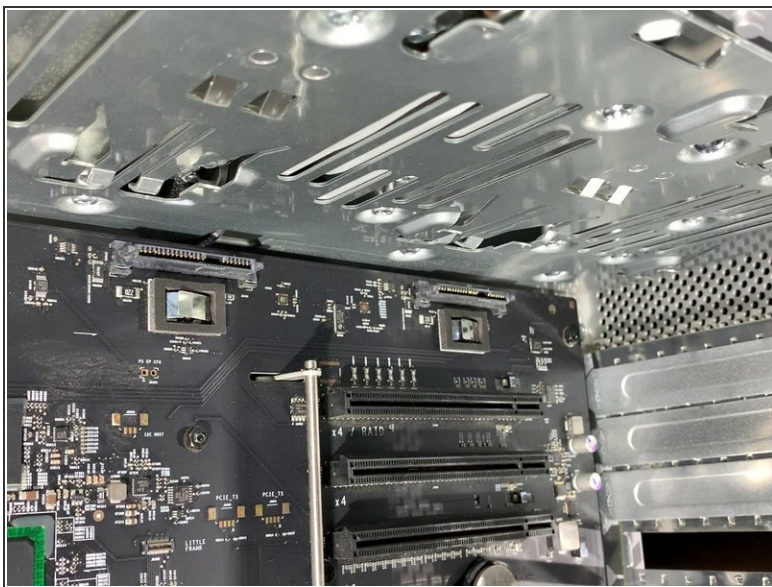
Step 19 — Unplug the power supply



- Push on both knobs to remove the power connector

 Do not use force, if you push on the knobs it should come out without force.

Step 20 — Separate the power supply




- Unscrew the 4 screws that hold in the power supply

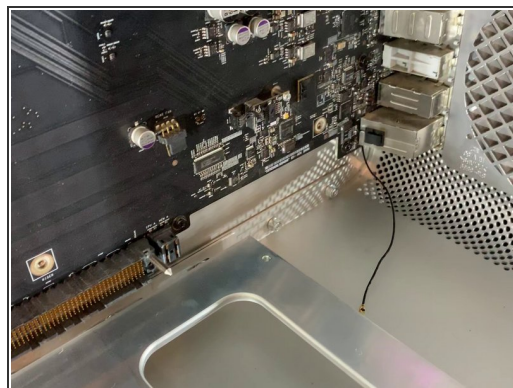
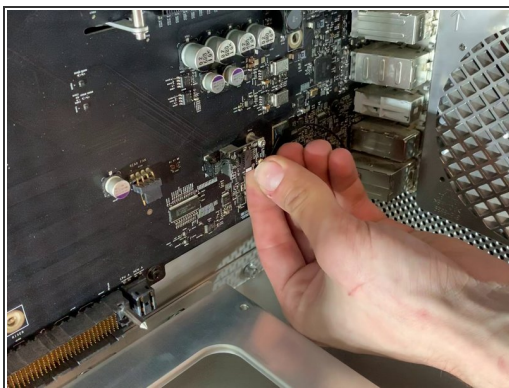
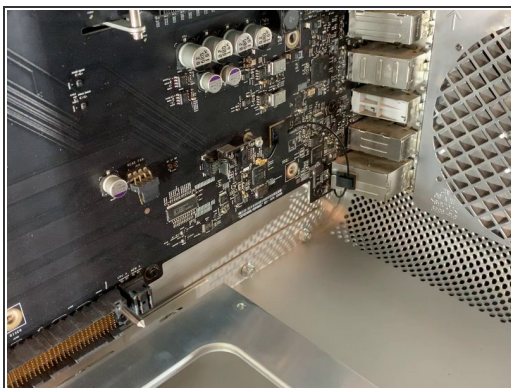
Step 21 — Remove the power supply



- Pull the power supply towards you.

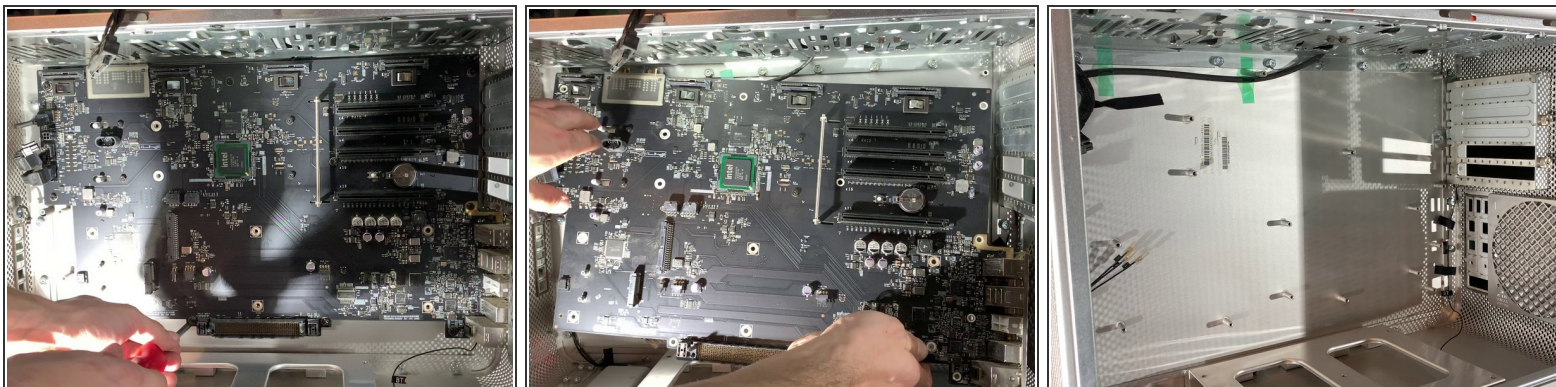
 Be sure to pull the connector forward and watch the cables

Step 22 — Detach the bluetooth antenna



- Unclip the bluetooth antenna

Step 23 — Remove the mother board



- Unscrew the 10 screws holding in the motherboard

Step 24 — Change the case



- Follow the steps in reverse to resemble.

To resemble, follow the instructions in the reverse order.