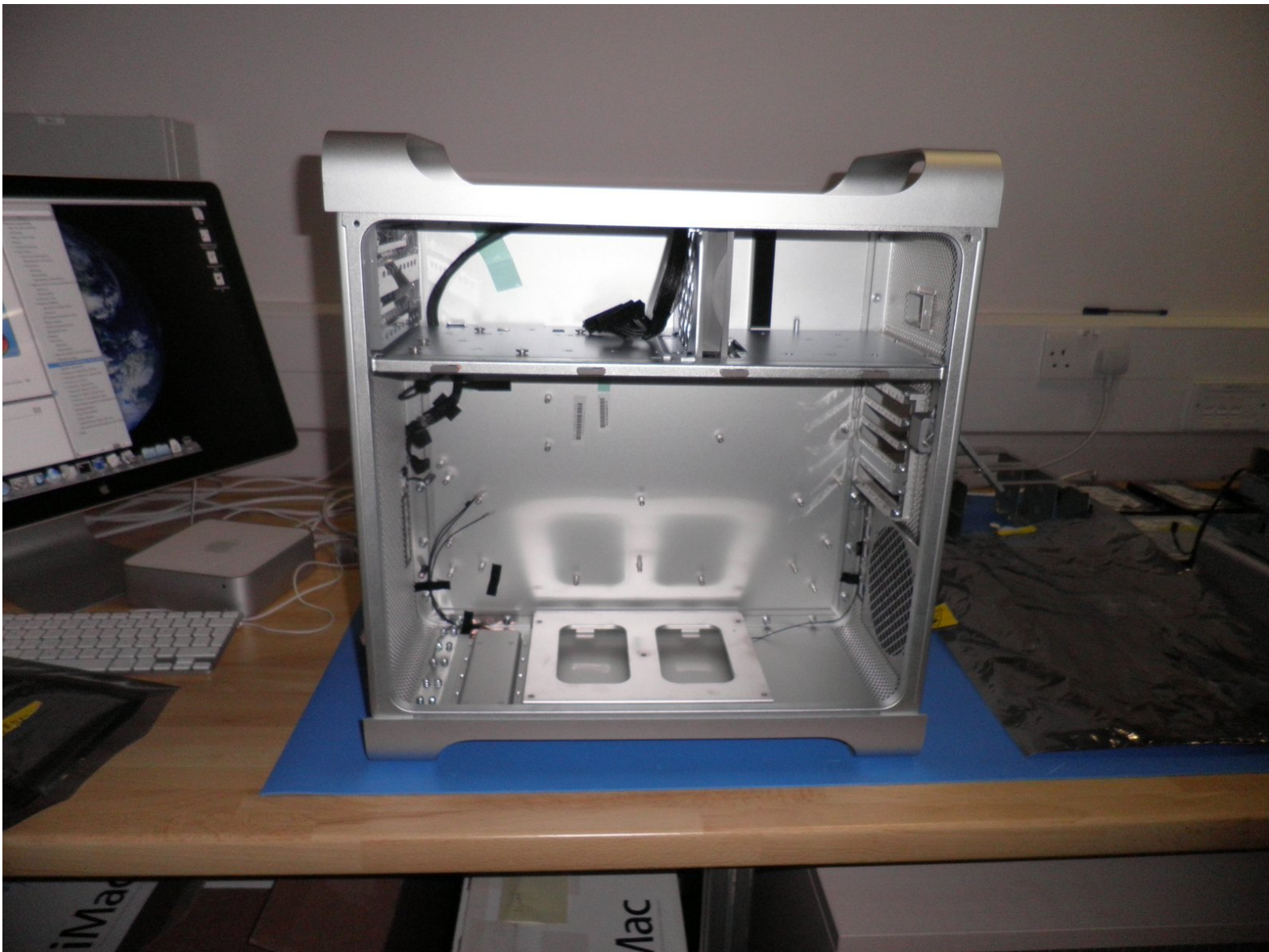




# Mac Pro Early 2009 Teardown

This guide is to take apart a Mac Pro Early 2009 8 Core and to show parts of the Mac Pro and the difficulties of rebuilding it.

Written By: zongo



---

# INTRODUCTION

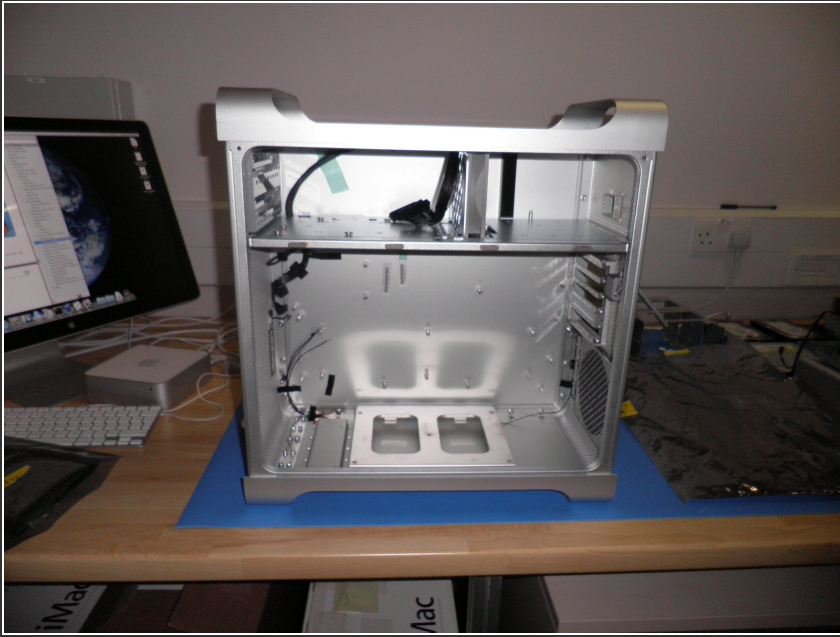
Mac Pro Early 2009 8 Core.



## TOOLS:

- [iFixit Opening Tools](#) (1)
  - [Spudger](#) (1)
  - [64 Bit Driver Kit](#) (1)
-

## Step 1 — Mac Pro Early 2009 Teardown



- I took the Mac Pro Apart.

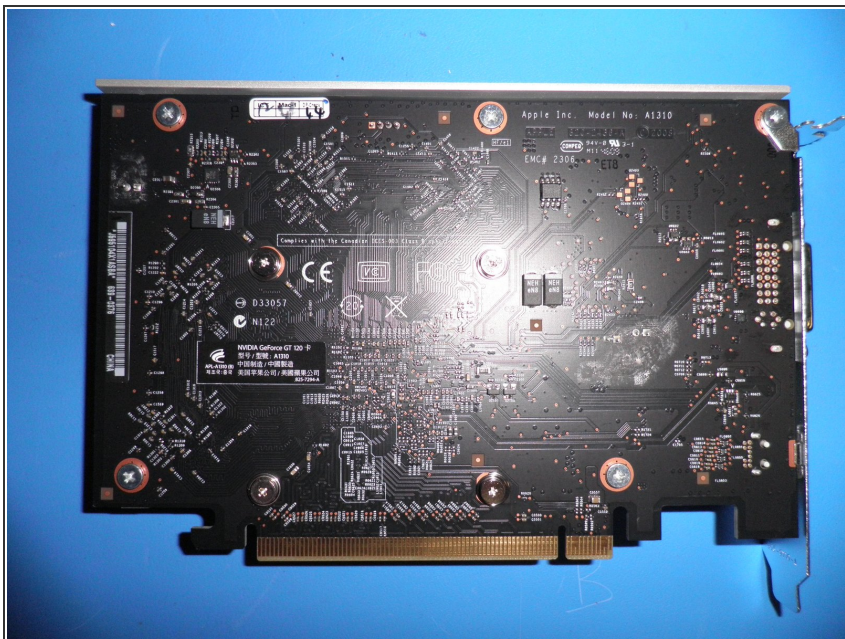
## Step 2



- added the PSU

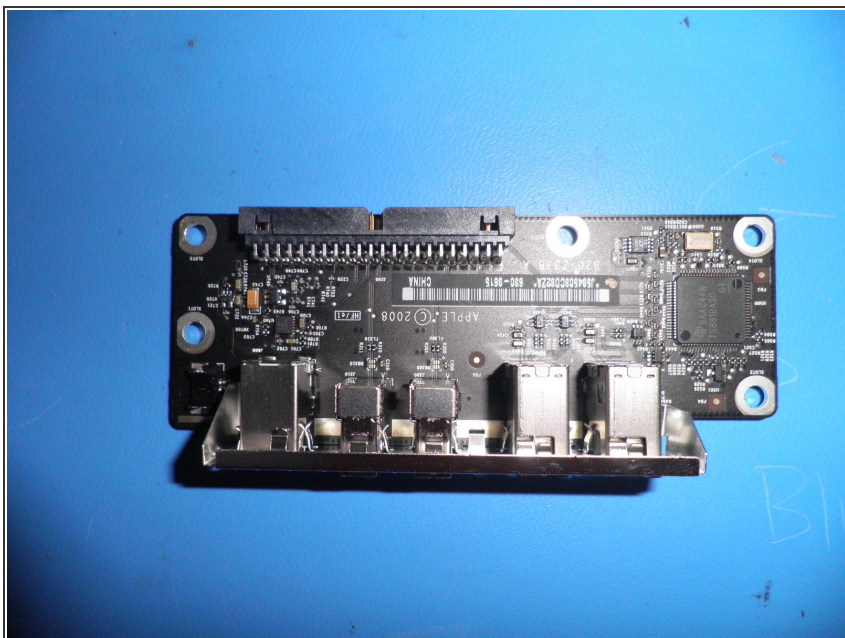


## Step 3



- added the backplane board

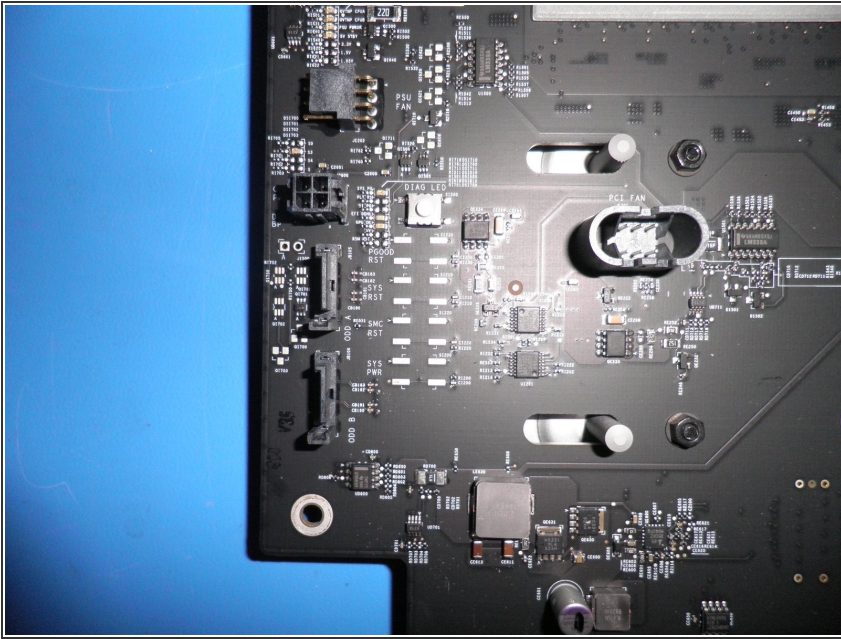
## Step 4



- Front Panel Board



## Step 5



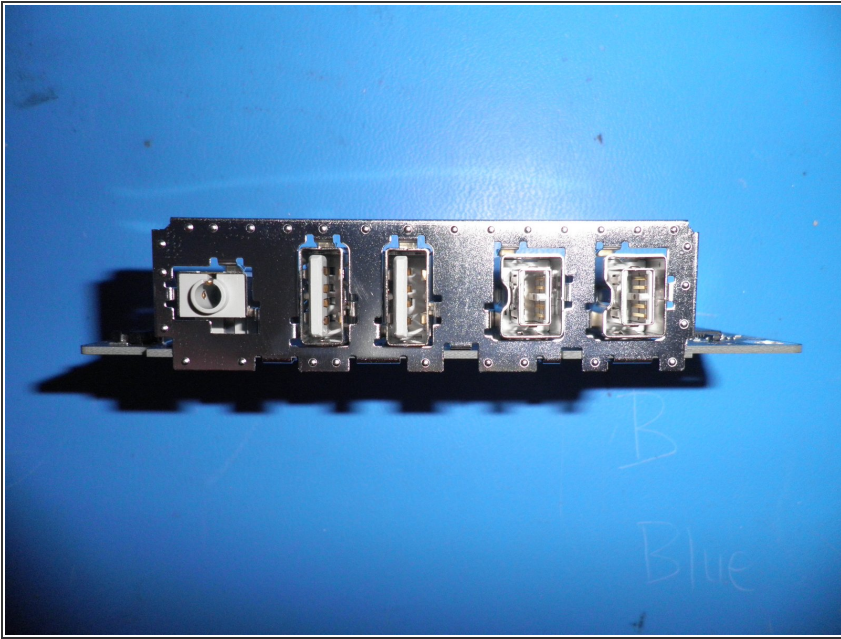
- Here you can see the LEDs of the Mac Pros, and the DIAG\_LED bottom

## Step 6



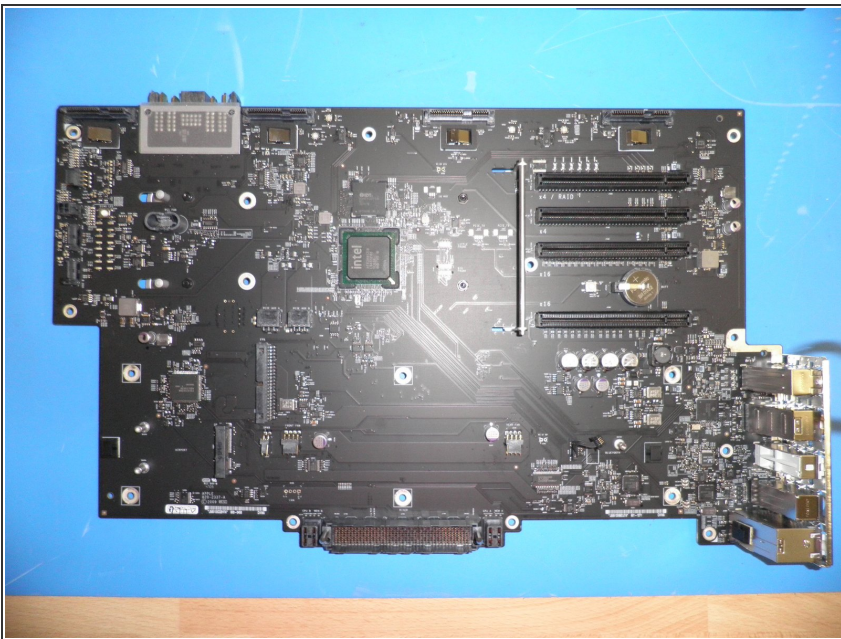
- The front panel board to backplane board cable

## Step 7



- another view of the front panel board

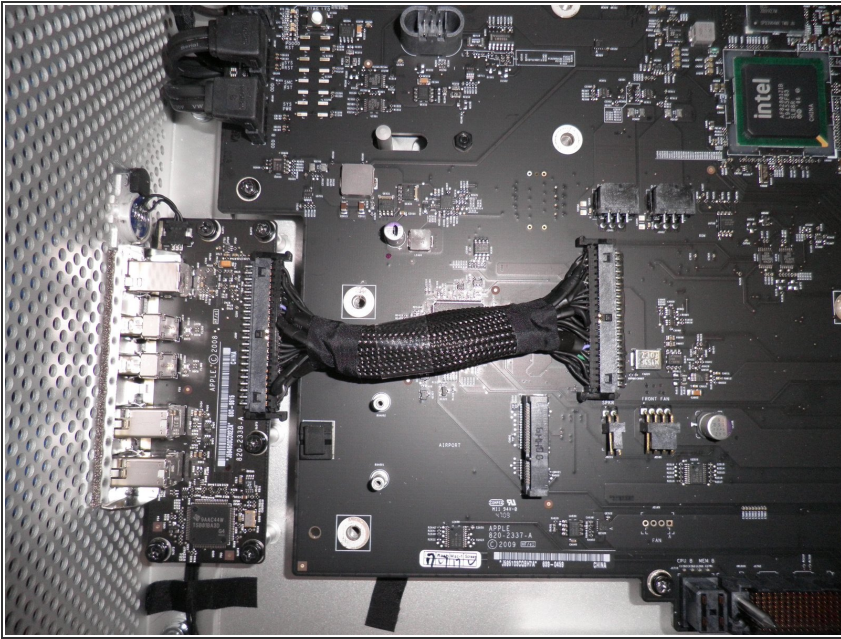
## Step 8



- Another view of the backplane board



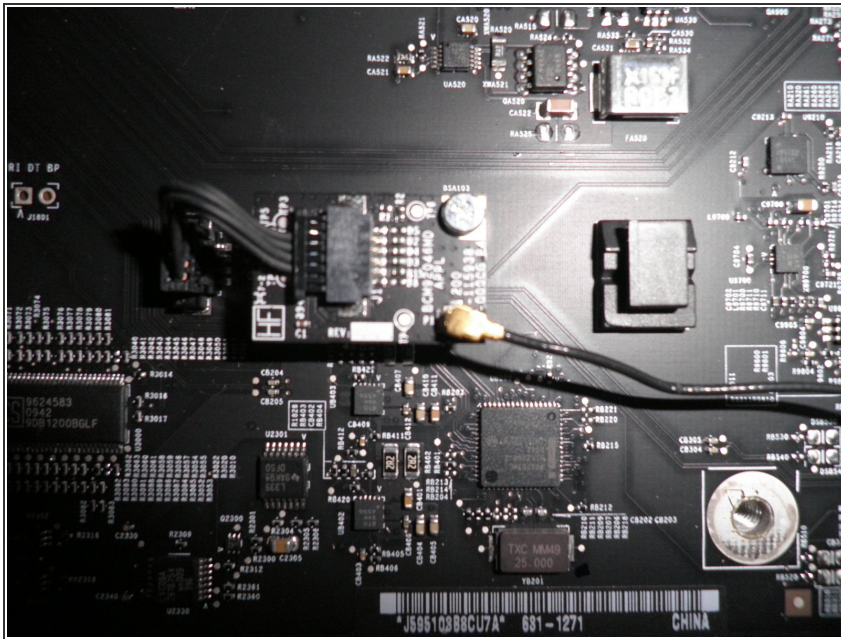
## Step 9



- BackPlane Board and frontPanel Board linked by FrontPanel Board to BackPlane Board cable

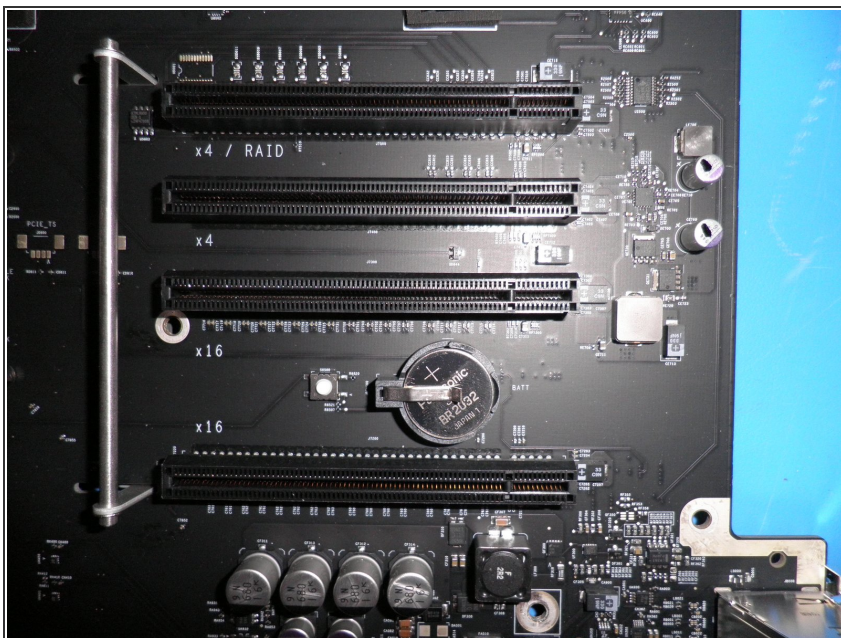


## Step 10



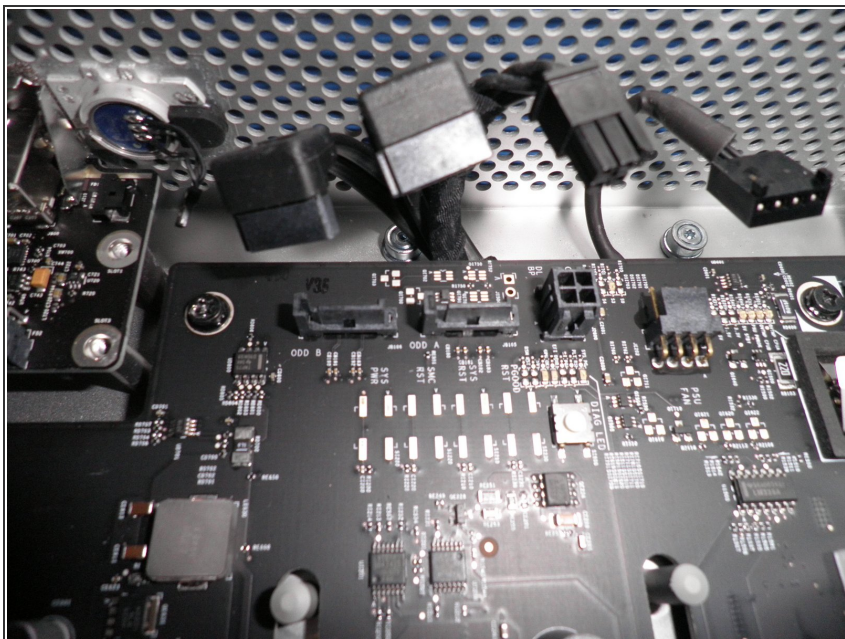
- Bluetooth antenna connected to the card on the Backplane board. One needs to be careful because if not connected the Antenna needs to be attached in order not to short-circuit the backpanel board.

## Step 11



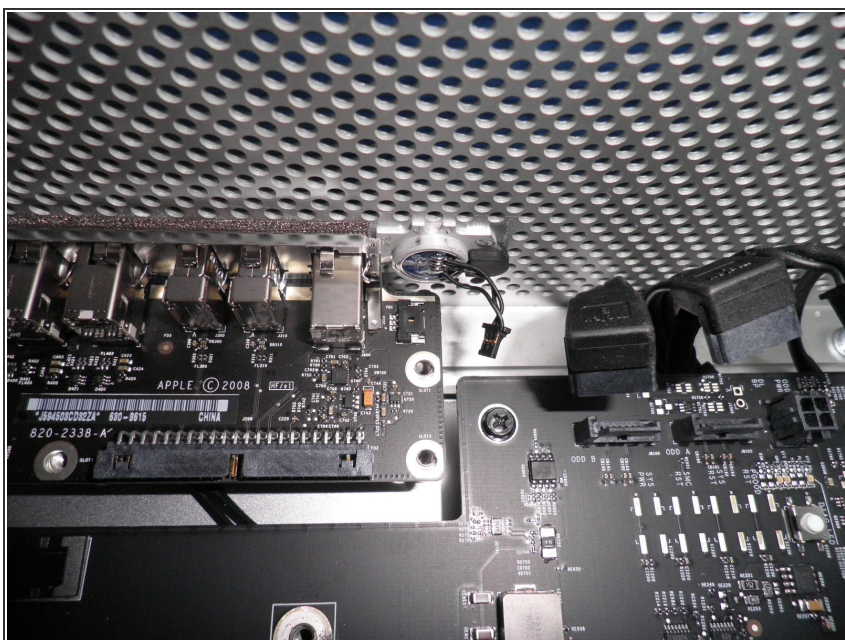
- A view of the PCI Slots on the Mac Pro Early 2009

## Step 12



- Optical Drive Cables on BackPlane Board.

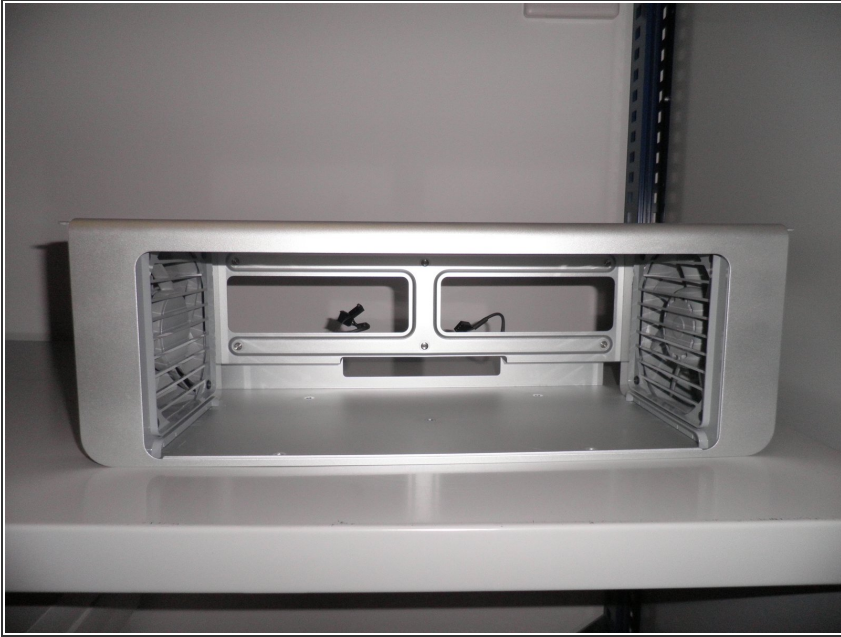
## Step 13



- A view of the power button that needs to be connected on the front panel board.



## Step 14



- Processor Cage

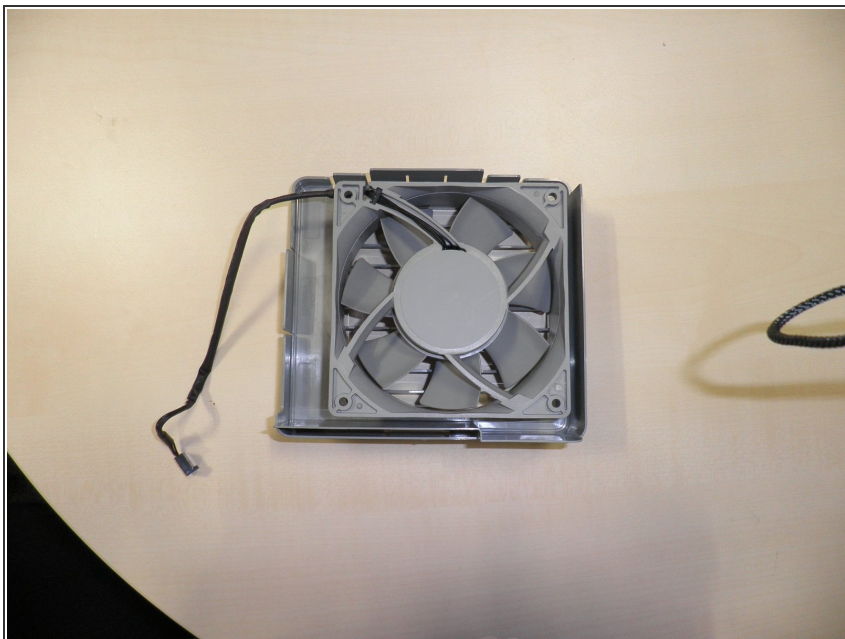
## Step 15



- Left Fan in processor cage with speaker.

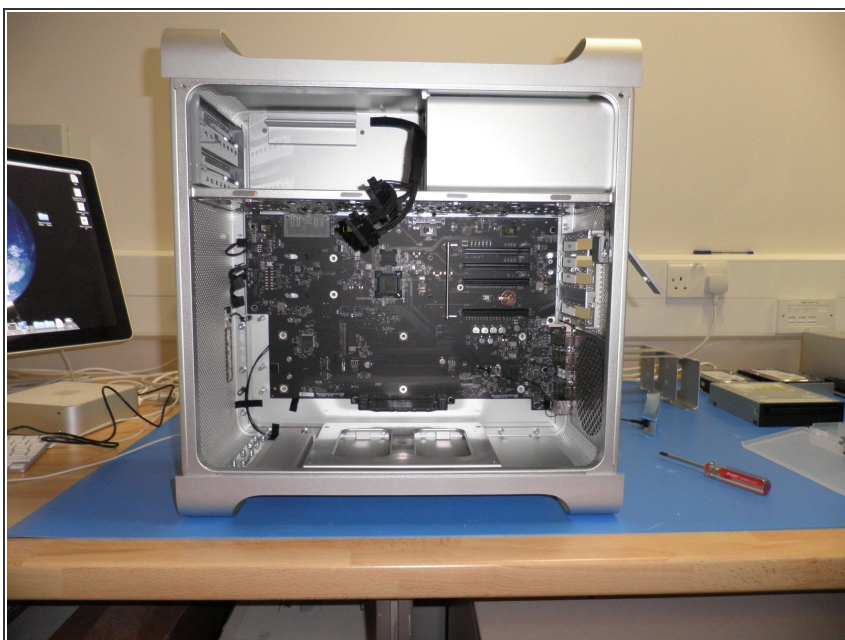


## Step 16



- right fan in processor cage.  
Remember, two clips to take the a fan apart. Top and Bottom.

## Step 17



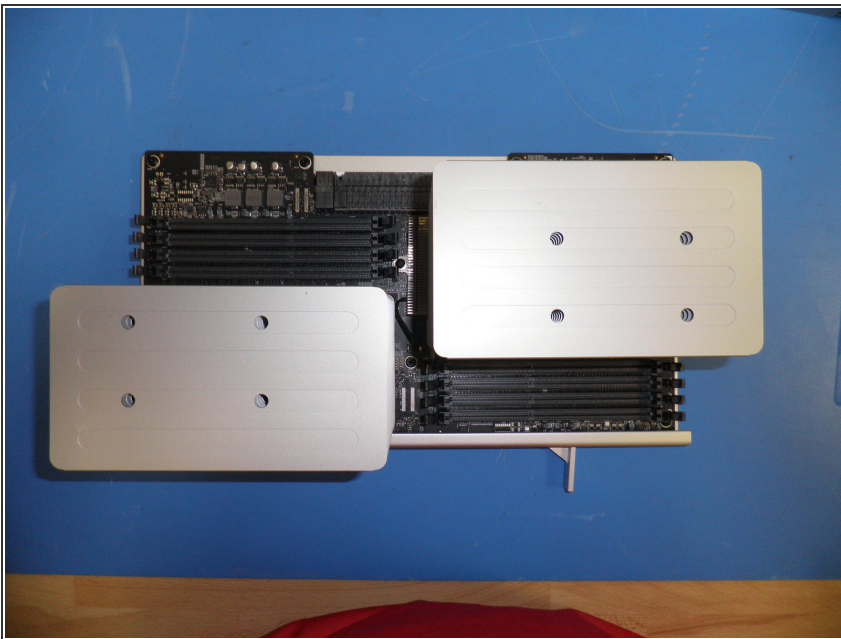
- Unit with, PSU, BackPlane Board, Front Panel Board.

## Step 18



- Small parts that cover the PSU and Super Drive cables.

## Step 19



- Processor heatsinks 8 Core



## Step 20



- Processor Heatsink 4 core

## Step 21



- We can really see the difference between the 8 core and 4 core.

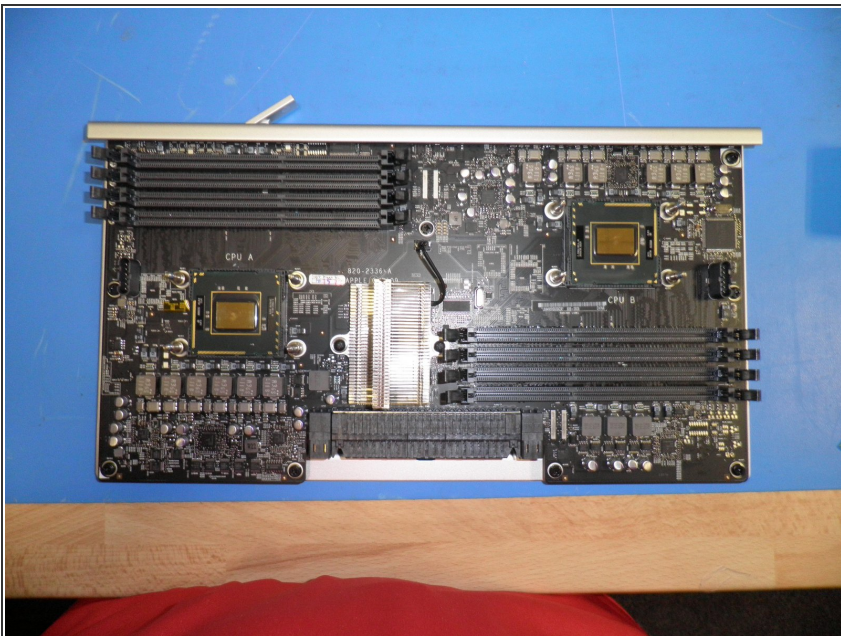


## Step 22



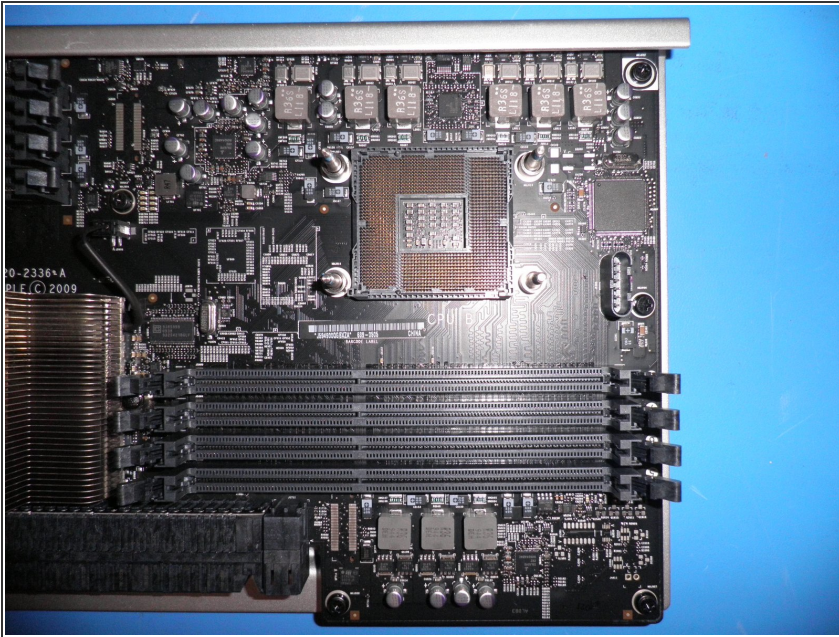
- Processor Cage & Left and right Speakers.

## Step 23



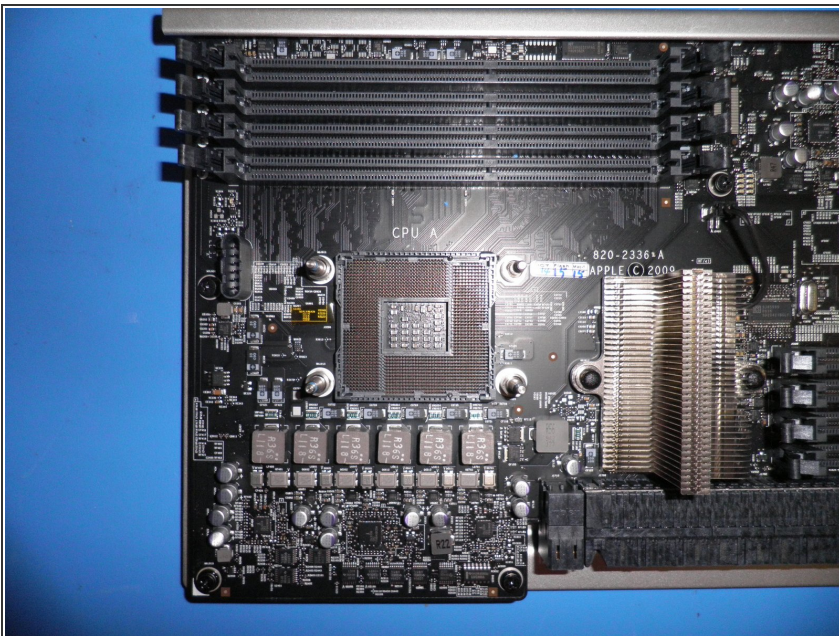
- A nice view of processor board 8 core.

## Step 24



- CPU B of the processor Board.

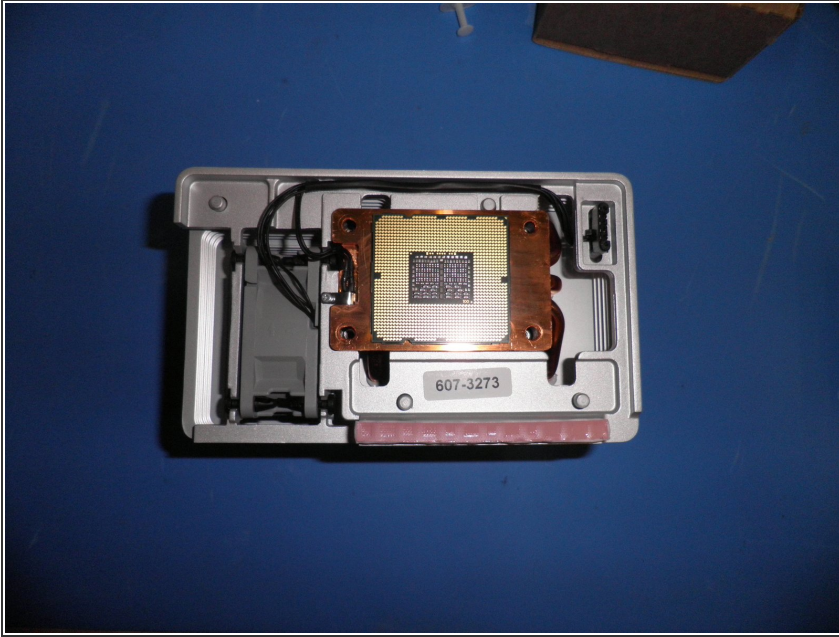
## Step 25



- CPU A of Processor Board.

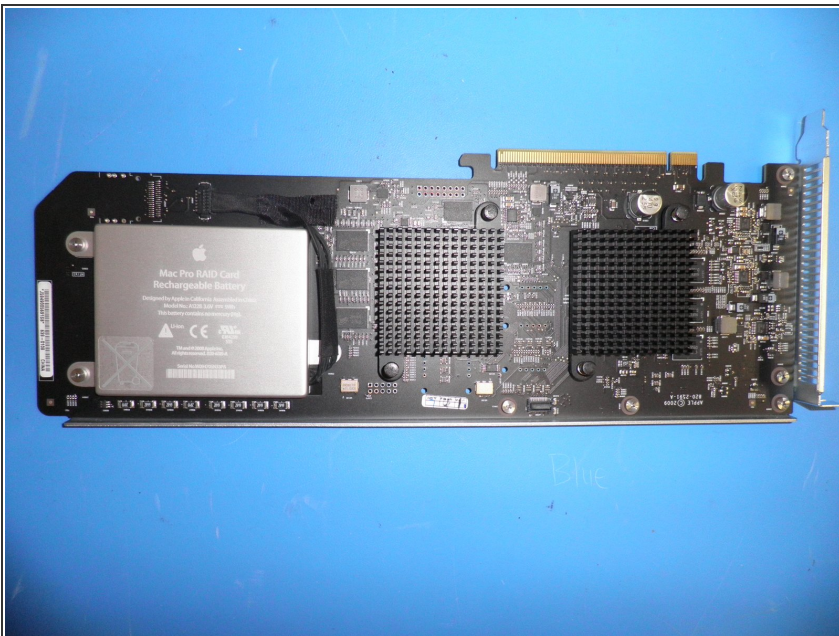


## Step 26



- Processor & HeatSink

## Step 27



- RAID Card for Mac Pro Early 2009

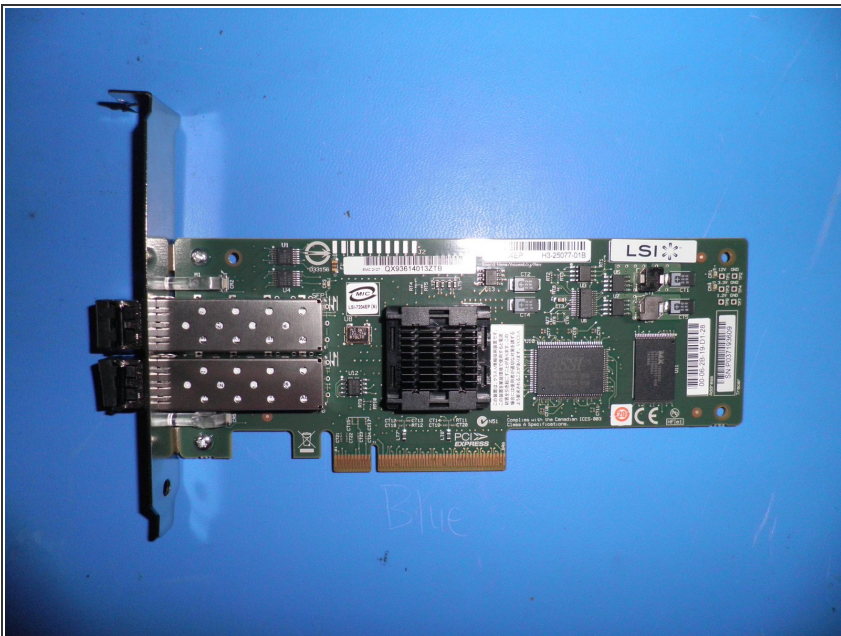


## Step 28



- Graphic Card

## Step 29



- Fibre Channel Card

## Step 30



- Finally the machine is rebuilt