



Mac Pro First Generation GPU Replacement

This guide will demonstrate how to properly and safely replace the GPU for a Mac Pro.

Written By: Andrew Kim



INTRODUCTION

Accessing the GPU is easy and requires no tools. Use this guide to add or replace RAM for your Mac Pro.

Step 1 — Case Panel



- Lift the lever to unlock the case.

Step 2



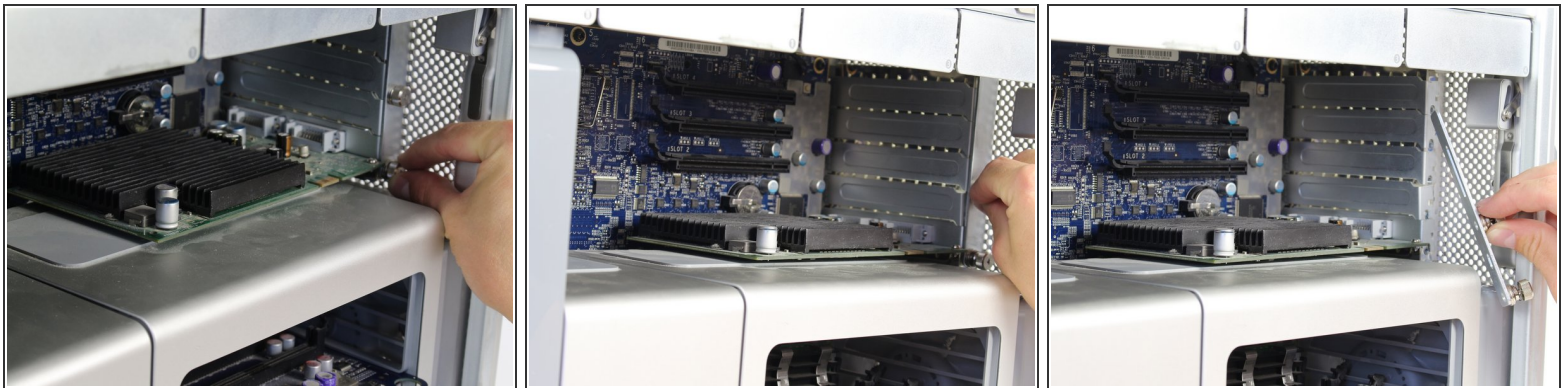
- Remove the side panel of the Mac Pro.
- ⚠ Discharge any static electricity by touching a grounded surface prior to working on any internal components.

Step 3 — GPU (Graphics Card)



- Locate the graphics card in the open panel side of your Mac Pro.

Step 4



- Unscrew the two thumb screws by twisting counterclockwise using your fingers until the slide lock is released.
- Remove the slide lock.

Step 5



- Push up on the clip directly behind the graphics card to release it from its slot.
 - Slide the graphics card out of the slot using both hands by firmly holding the corners of the top of the card as shown.
- ⚠ Handle the card only by its edges. Don't touch any exposed components or connectors.

To reassemble your device, follow these instructions in reverse order.