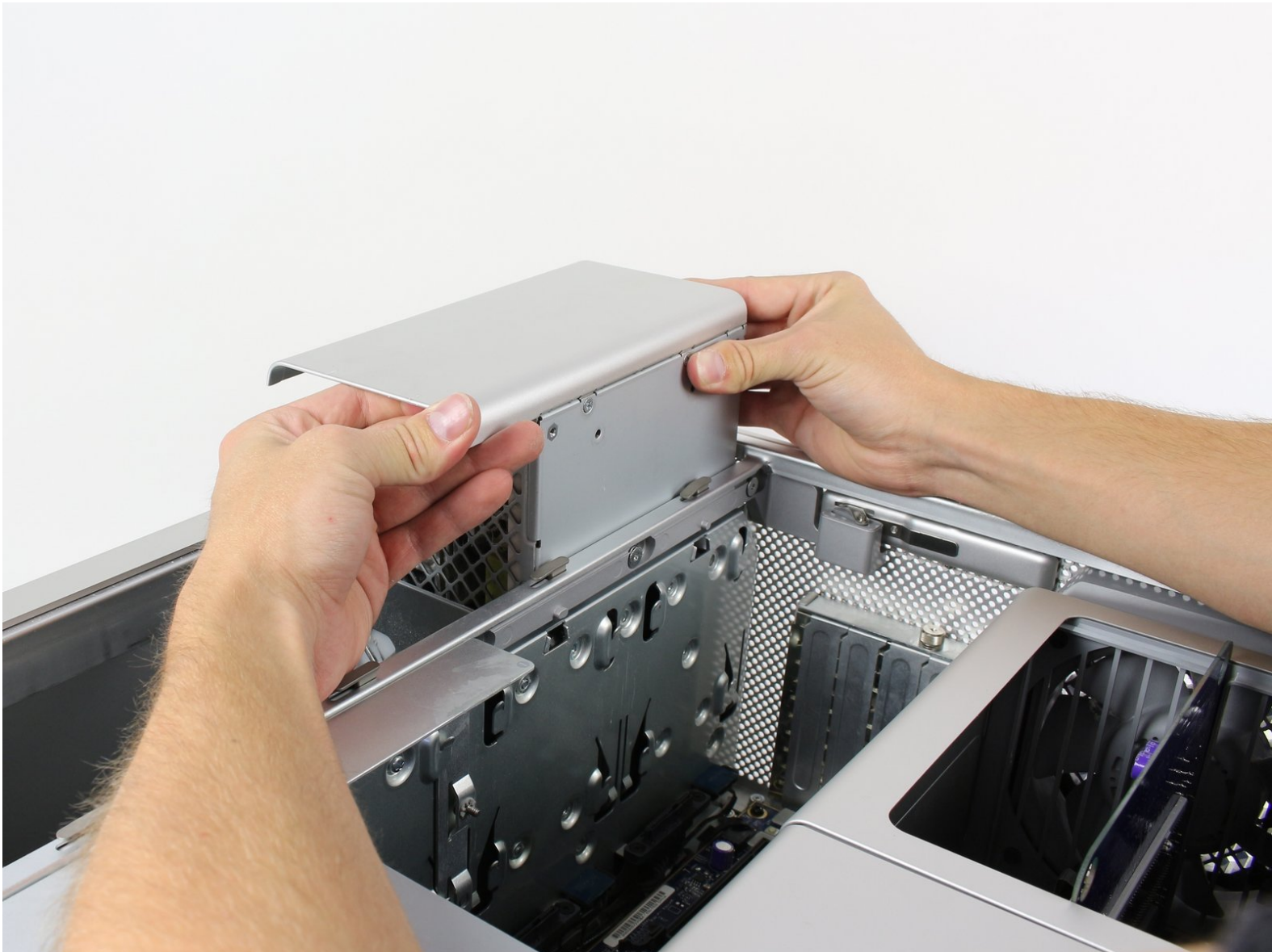




Mac Pro First Generation Power Supply Unit Replacement

This guide shows how to replace the power supply unit on a First Generation Mac Pro

Written By: Eric Kuhta



INTRODUCTION

Accessing and removing the power supply unit is relatively straightforward, and will require a 2mm Hex screwdriver.



TOOLS:

- [2.5 mm Hex Bit](#) (1)
- [64 Bit Driver Kit](#) (1)



PARTS:

- [Apple Part #661-4677](#) (1)

Step 1 — Case Panel



- Lift the lever to unlock the case.

Step 2



- Remove the side panel of the Mac Pro.
- ⚠ Discharge any static electricity by touching a grounded surface prior to working on any internal components.

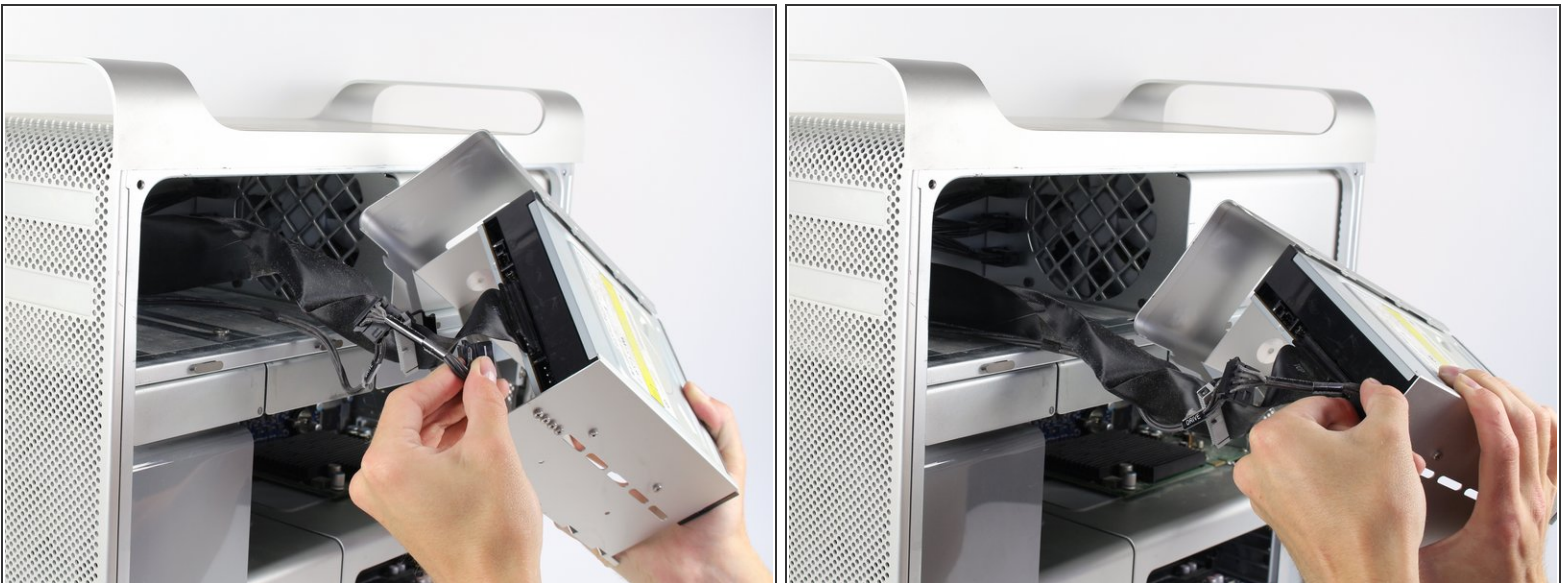
Step 3 — Removing the Disk Drive



i The optical drive must be removed to access the power supply unit

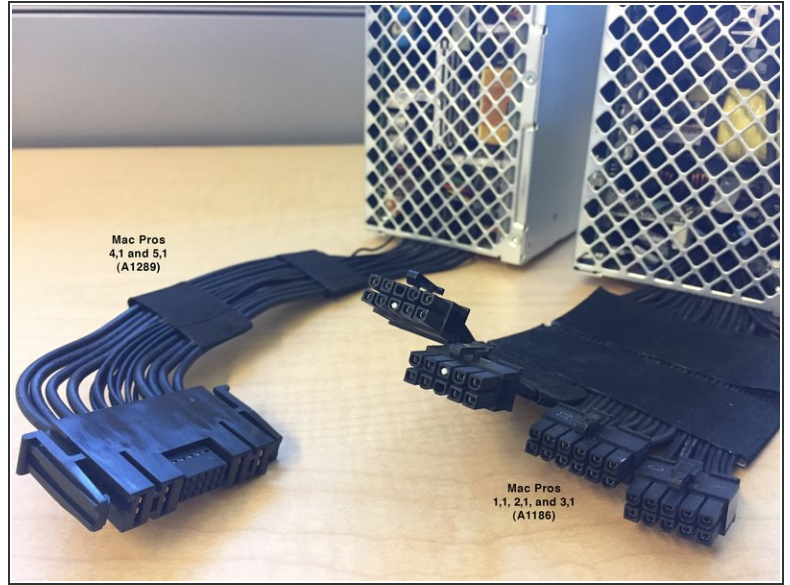
- Firmly grasp the handles of the shown compartment and pull out firmly to remove the optical drive bay.

Step 4 — Unplugging the Disk Drive



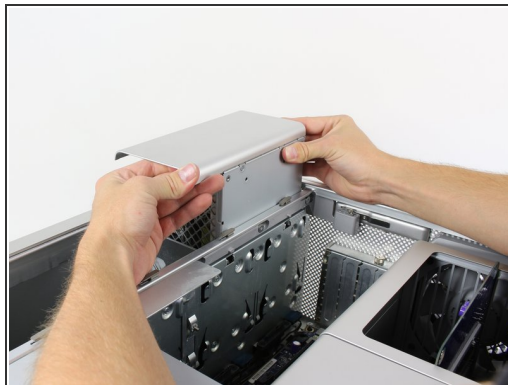
- Firmly hold each of the two connectors and pull them out of their respective sockets.

Step 5 — Un-Mounting the Power Supply Unit



- Remove the 4 marked 6-32 hex screws with a 2mm Phillips hex screwdriver.
- ⓘ There are a number of Phillips head screws underneath. These don't need to be removed to remove the power supply.
- Note the different PSU for Mac Pro 1,1 through 3,1 versus Mac Pro 4,1 and 5,1.

Step 6 — Removing the Power Supply

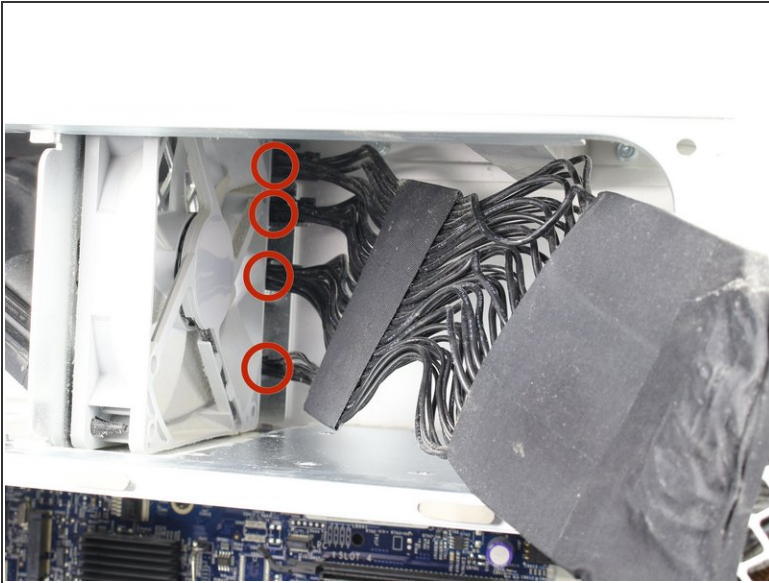


- ⓘ Be careful when pulling the power supply out, as it has several attached cables which don't have much slack.
- Grip the handle on the left side of the power supply casing while gripping the right side of the power supply casing and pull upwards firmly to take it out.

Step 7 — If power Supply only comes out a few Inches.

- For the Mac Pro (Early 2008/9), a.k.a. MacPro3,1 In the MacPro3,1, the power supply screws are 2.5mm hex, not T-10. Also, there is a cover plate behind the superdrive that has to be removed (2 phillips screws) to expose the power cable connections and those connectors must be detached and slid under fan before the power supply can be removed.

Step 8 — Disconnecting the Power Supply



- Locate the four marked cables
- Push down on the clip that is above each cable connector while firmly grasping each connector and pull each one back to remove each clip.

To reassemble your device, follow these instructions in reverse order.