



Mac Pro Late 2013 AirPort Board Replacement

prerequisite to both AirPort Card and Fan

Written By: Andrew Optimus Goldheart





TOOLS:

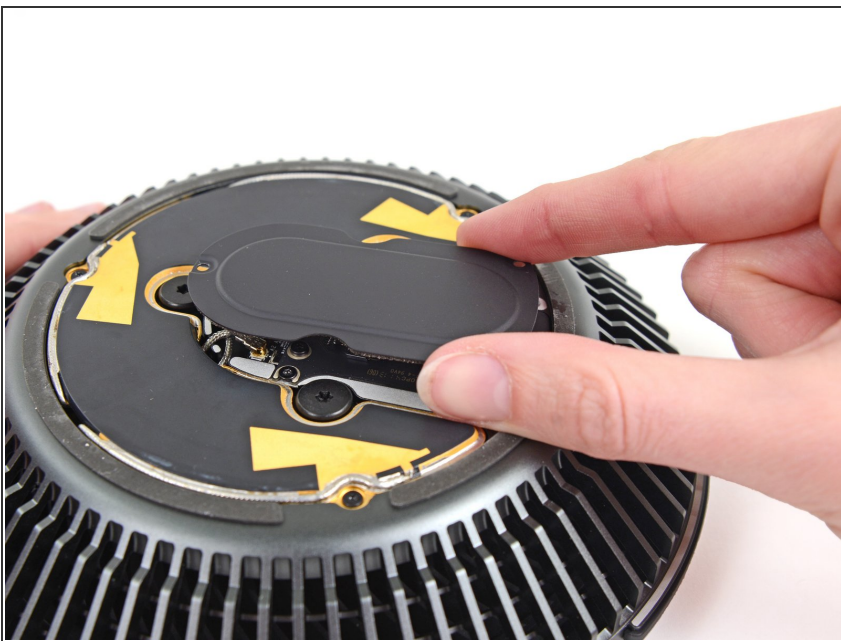
- [T4 Torx Screwdriver](#) (1)
 - [Spudger](#) (1)
-

Step 1 — AirPort Board



- Remove the three 3.7 mm T4 screws securing the metal cover to the AirPort board bay.

Step 2



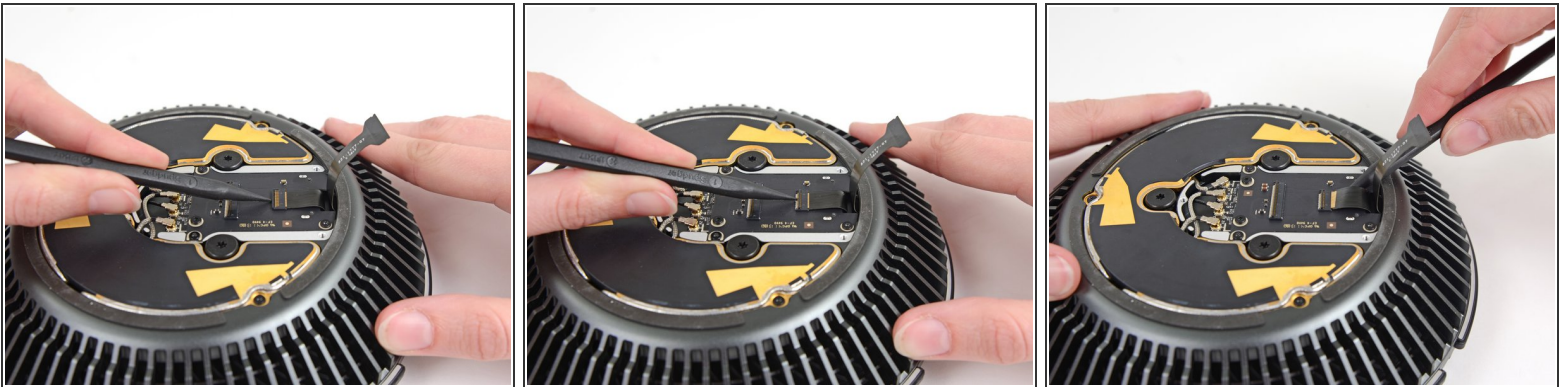
- Lift and remove the metal cover from the AirPort board bay.

Step 3



- Use the tip of a spudger to flip the ZIF retaining tab on the fan assembly ribbon cable connector.
- Remove the fan assembly ribbon cable from its ZIF socket.

Step 4



- Use the tip of a spudger to flip the ZIF retaining tab on the fan ribbon cable.
- Disconnect the fan ribbon cable.

To reassemble your device, follow these instructions in reverse order.