



Mac mini Mid 2010 Antenna Plate Replacement

Removing the perforated steel antenna plate.

Written By: Andrew Bookholt



INTRODUCTION

Use this guide to replace the antenna plate that serves as a mount for the antenna as well as the hard drive.



TOOLS:

- [2 mm Hex Screwdriver](#) (1)
 - [Spudger](#) (1)
 - [T6 Torx Screwdriver](#) (1)
 - [T8 Torx Screwdriver](#) (1)
-

Step 1 — Bottom Cover



- Place your thumbs in the depressions cut into the bottom cover.
- Rotate the bottom cover counter-clockwise until the white dot painted on the bottom cover is aligned with the ring inscribed on the outer case.

Step 2



- Tilt the mini enough to allow the bottom cover to fall away from the outer case.
- Remove the bottom cover and set it aside.

Step 3 — Fan



- Remove the two 11.3 mm T6 Torx screws securing the fan to the logic board near the antenna plate.

Step 4



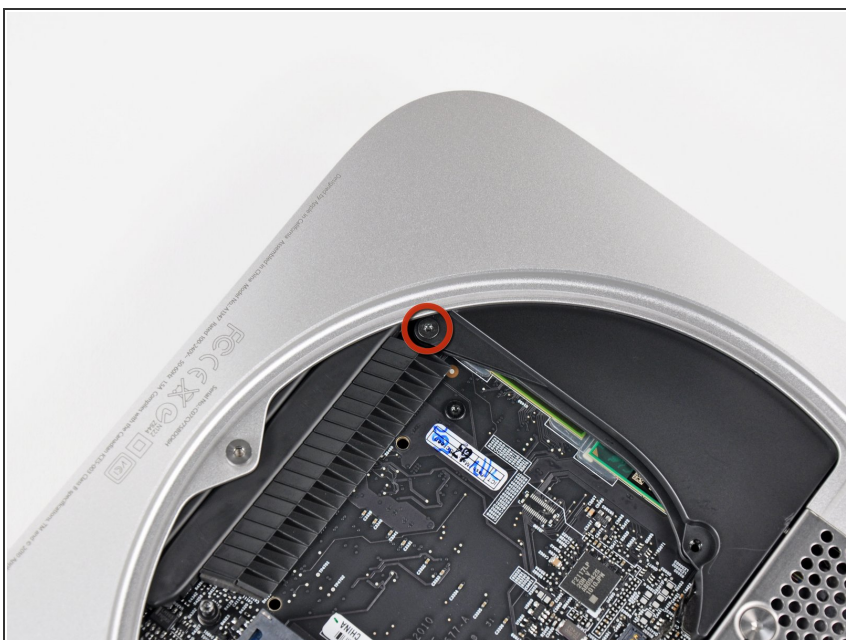
- Lift the ear of the fan nearest the RAM up off the standoff secured to the outer case.
- ⓘ If the fan doesn't separate from the standoff screw with a moderate amount of force, you can use a T6 Torx driver to simply remove this screw.

Step 5



- Lift the fan out of the mini for enough clearance to access its connector.
- Carefully pull the fan cables upward to lift the fan connector up out of its socket on the logic board.
- Remove the fan.

Step 6 — Cowling



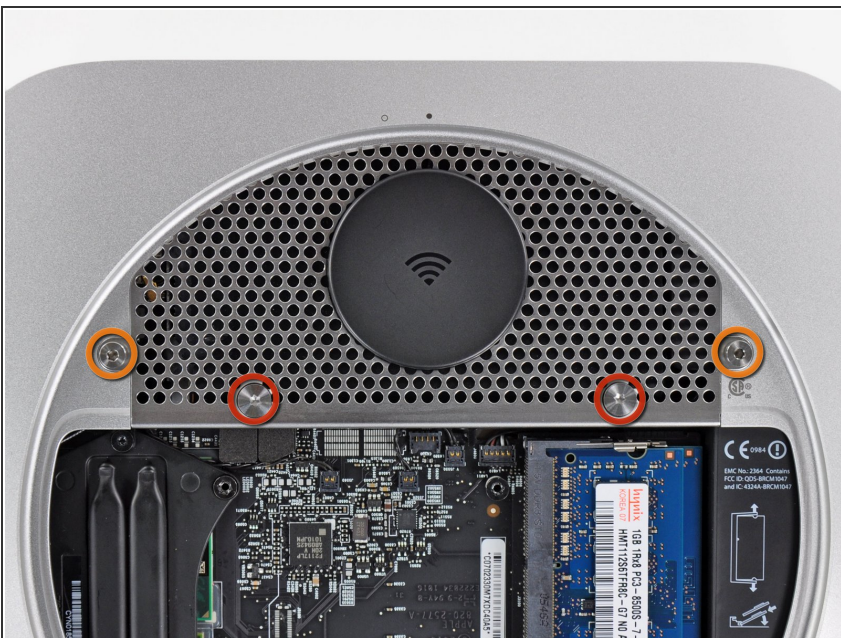
- Remove the single 3.5 mm T6 Torx screw securing the cowling to the heat sink.

Step 7



- Lift the cowling from the end nearest the antenna plate.
- Rotate the cowling away from the outer case and remove it from the mini.

Step 8 — Antenna Plate




- Remove the following screws securing the antenna plate to the mini:
 - Two 6.6 mm T8 Torx screws
 - Two 5.0 mm T8 Torx or 2.0 mm Hex screws (either will work)

Step 9



- Slightly lift the antenna plate from the end closest to the RAM.
- Carefully pull the antenna plate straight away from the circular rim of the outer case.

 Do not remove the antenna plate yet. It is still attached to the AirPort/ Bluetooth board.

Step 10



- Use the tip of a spudger to carefully pry the antenna connector up off the AirPort/Bluetooth board.

Step 11



- Remove the antenna plate from the mini.

To reassemble your device, follow these instructions in reverse order.