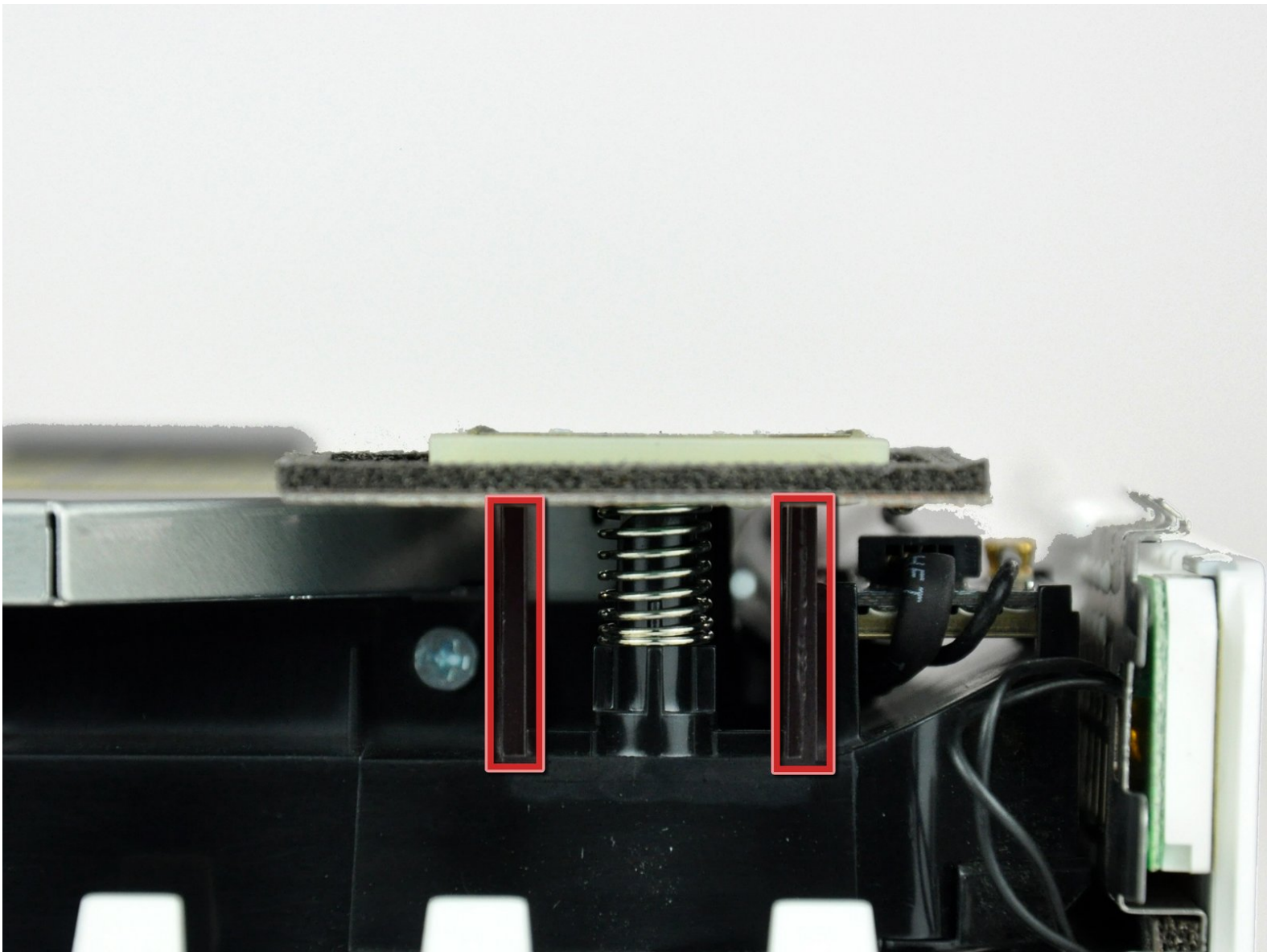




Mac mini Model A1176 Bluetooth Antenna Replacement

Written By: Walter Galan



INTRODUCTION

Replace a faulty Bluetooth antenna to regain Bluetooth range.



TOOLS:

- [Jimmy](#) (1)
 - [Phillips #00 Screwdriver](#) (1)
 - [Spudger](#) (1)
-

Step 1 — Top Housing



- Power down your Mac mini, disconnect all of the cables, and flip it over.
- Insert the Jimmy into the crack between the aluminum top housing and the plastic lower housing.
- The Jimmy should reach a stop about 3/8" down.

Step 2



- Gently bend the Jimmy outwards to pry the crack open a little larger and lift the lower housing up a small amount.
- ⓘ There are several plastic clips on the lower housing that fit into a channel in the aluminum top housing. Your goal is to use the Jimmy to push these clips inward enough to free them from the channel, while gently pulling up on the lower housing.

Step 3



- Once you have the first side free, rotate the Mac mini and start prying up on the front edge.
- Use the same prying motion to both bend the clips inward and lift the lower housing up out of the top housing.

Step 4



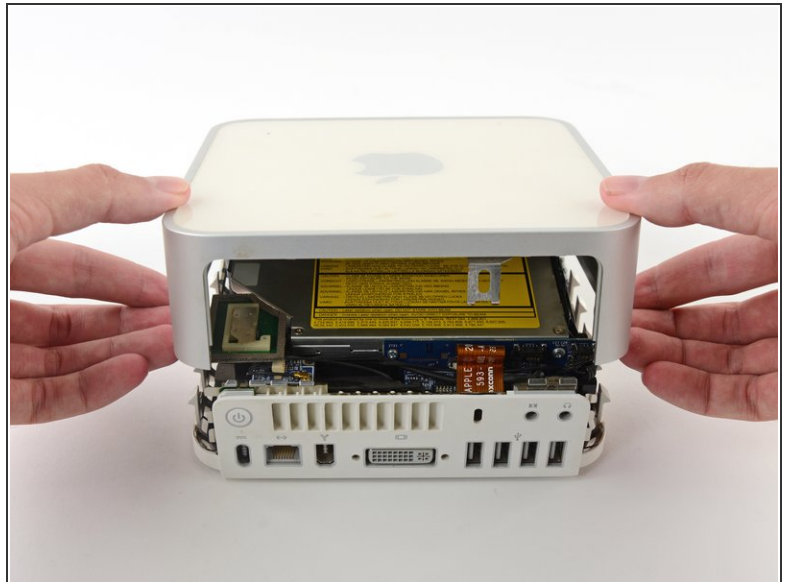
- You may need to move the Jimmy along the edge to pry up all of the clips. Be patient and do a little bit at a time.

Step 5



- Keep working around the perimeter, freeing the clips along the final edge.




Step 6



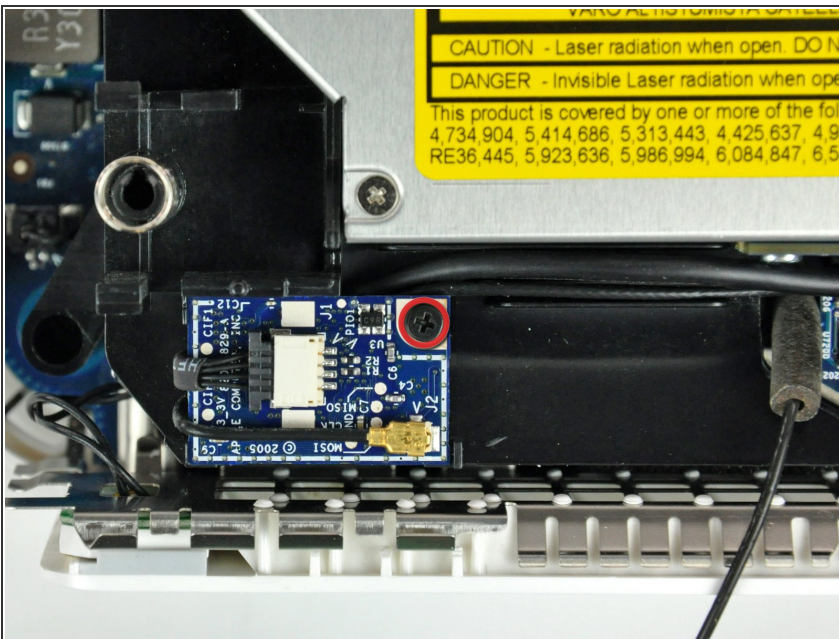
- Flip the Mac mini back over and lift the top housing off of the lower housing.

Step 7 — Bluetooth Antenna



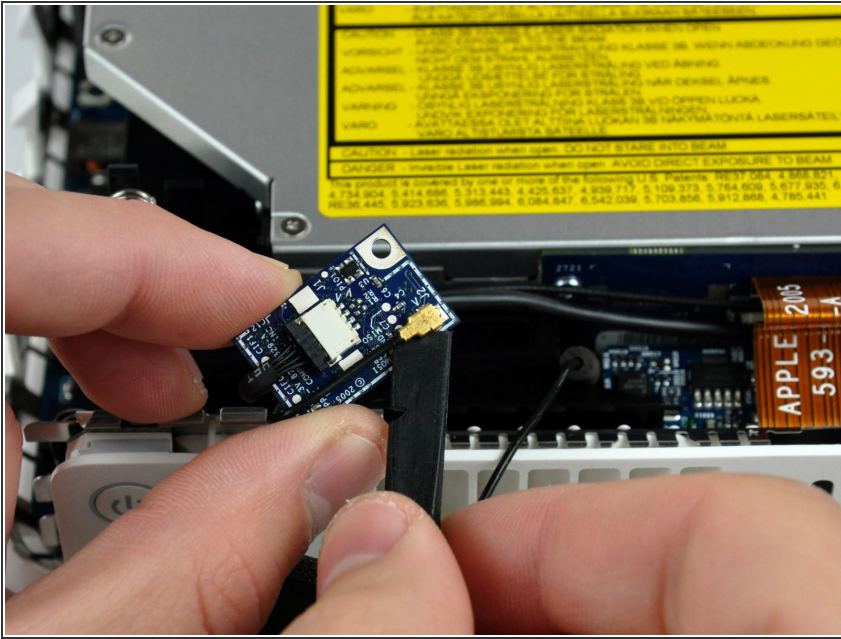
-  First remove the AirPort antenna (the larger of the two), located near the power button.
 - Slightly squeeze the two retaining arms toward each other and lift the AirPort antenna off its post.
-  Squeezing the two posts excessively will surely break them off the internal frame. Work delicately.
-  During reinstallation, you will have to slightly squeeze the two posts together so they fit into the openings on the AirPort antenna board.

Step 8



- Remove the single Phillips screw securing the Bluetooth board to the internal frame.

Step 9



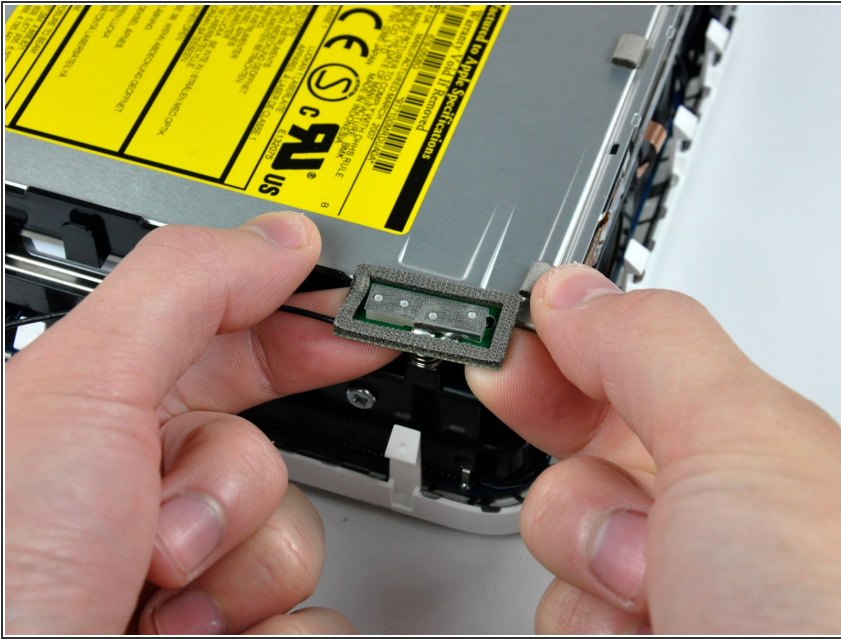
- Lift the Bluetooth board off the internal frame and use the flat end of a spudger to pry the Bluetooth antenna cable connector up off the Bluetooth board.

Step 10



- Pull the Bluetooth antenna cable out from underneath all the cables connected to the interconnect board.

Step 11



- ① The Bluetooth antenna is removed by simply lifting it up off the internal frame.
- Remove the Bluetooth antenna by pushing up on both sides of the board as close to the center post as possible.
- ① This may require a bit of force.
- Remove the Bluetooth antenna from the internal frame.

To reassemble your device, follow these instructions in reverse order.