



Mac mini Model A1176 Bluetooth Board Replacement

Written By: Walter Galan



INTRODUCTION

Replace a faulty Bluetooth board using this guide.



TOOLS:

- [Jimmy](#) (1)
 - [Phillips #00 Screwdriver](#) (1)
 - [Spudger](#) (1)
-

Step 1 — Top Housing



- Power down your Mac mini, disconnect all of the cables, and flip it over.
- Insert the Jimmy into the crack between the aluminum top housing and the plastic lower housing.
- The Jimmy should reach a stop about 3/8" down.

Step 2



- Gently bend the Jimmy outwards to pry the crack open a little larger and lift the lower housing up a small amount.
- ⓘ There are several plastic clips on the lower housing that fit into a channel in the aluminum top housing. Your goal is to use the Jimmy to push these clips inward enough to free them from the channel, while gently pulling up on the lower housing.

Step 3



- Once you have the first side free, rotate the Mac mini and start prying up on the front edge.
- Use the same prying motion to both bend the clips inward and lift the lower housing up out of the top housing.

Step 4



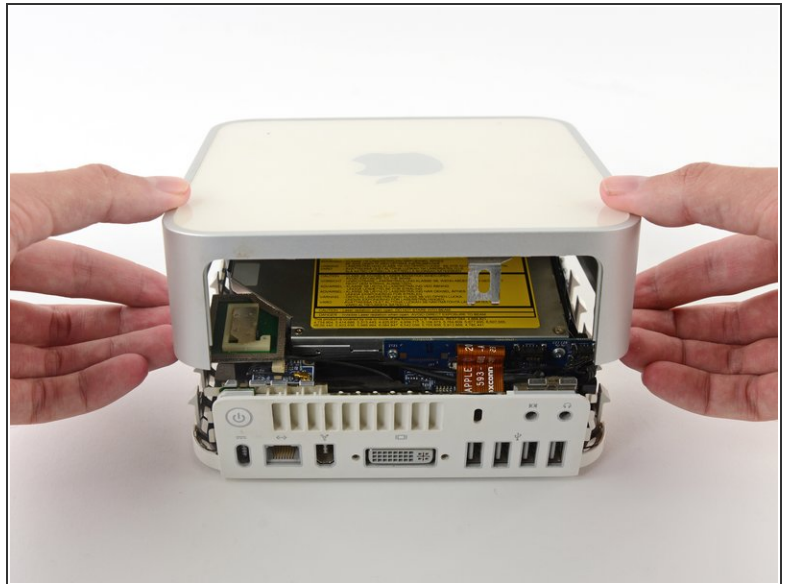
- You may need to move the Jimmy along the edge to pry up all of the clips. Be patient and do a little bit at a time.

Step 5



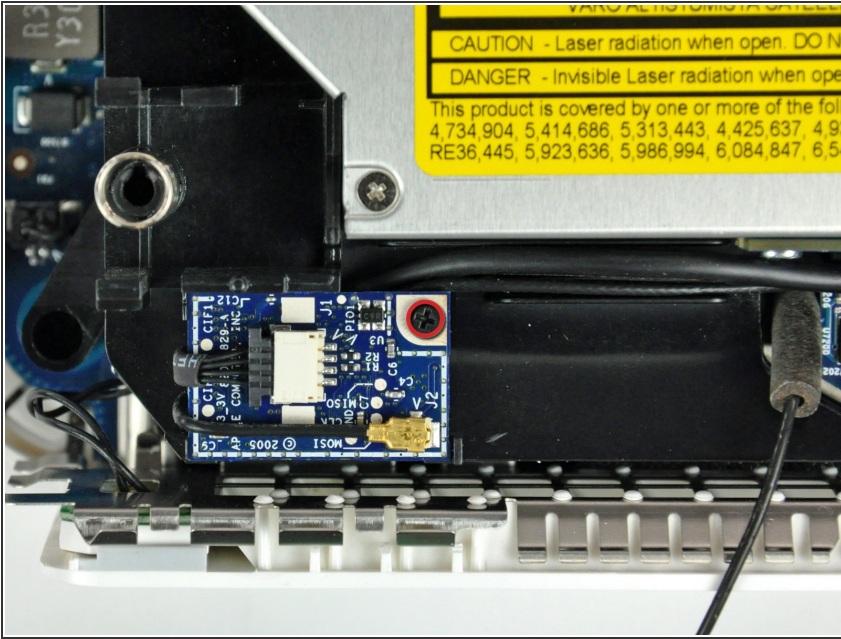
- Keep working around the perimeter, freeing the clips along the final edge.

Step 6



- Flip the Mac mini back over and lift the top housing off of the lower housing.

Step 7 — Bluetooth Board



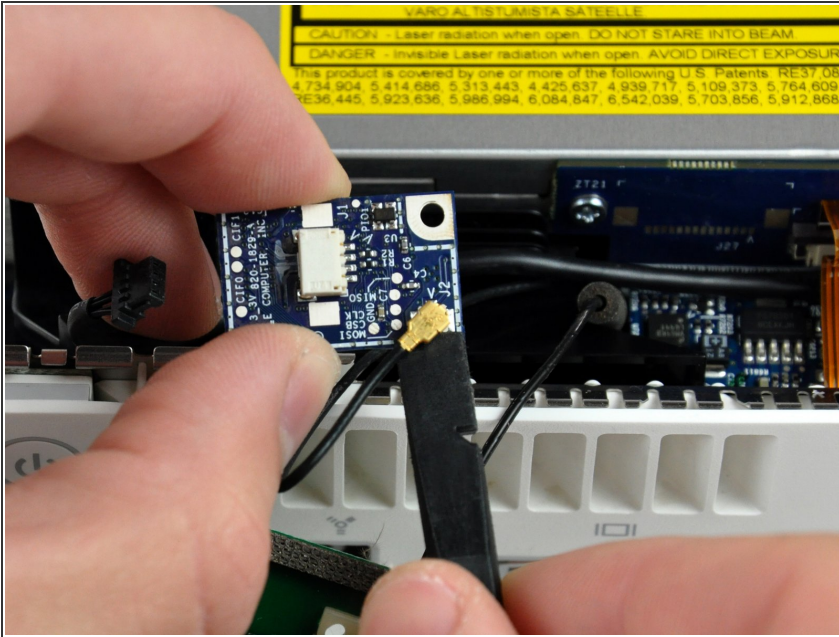
- Remove the single Phillips screw securing the Bluetooth board to the internal frame.

Step 8



- Disconnect the Bluetooth cable connector by pulling it straight away from its socket.

Step 9



- Use the flat end of a spudger to pry the Bluetooth antenna cable connector up off the Bluetooth board.

To reassemble your device, follow these instructions in reverse order.