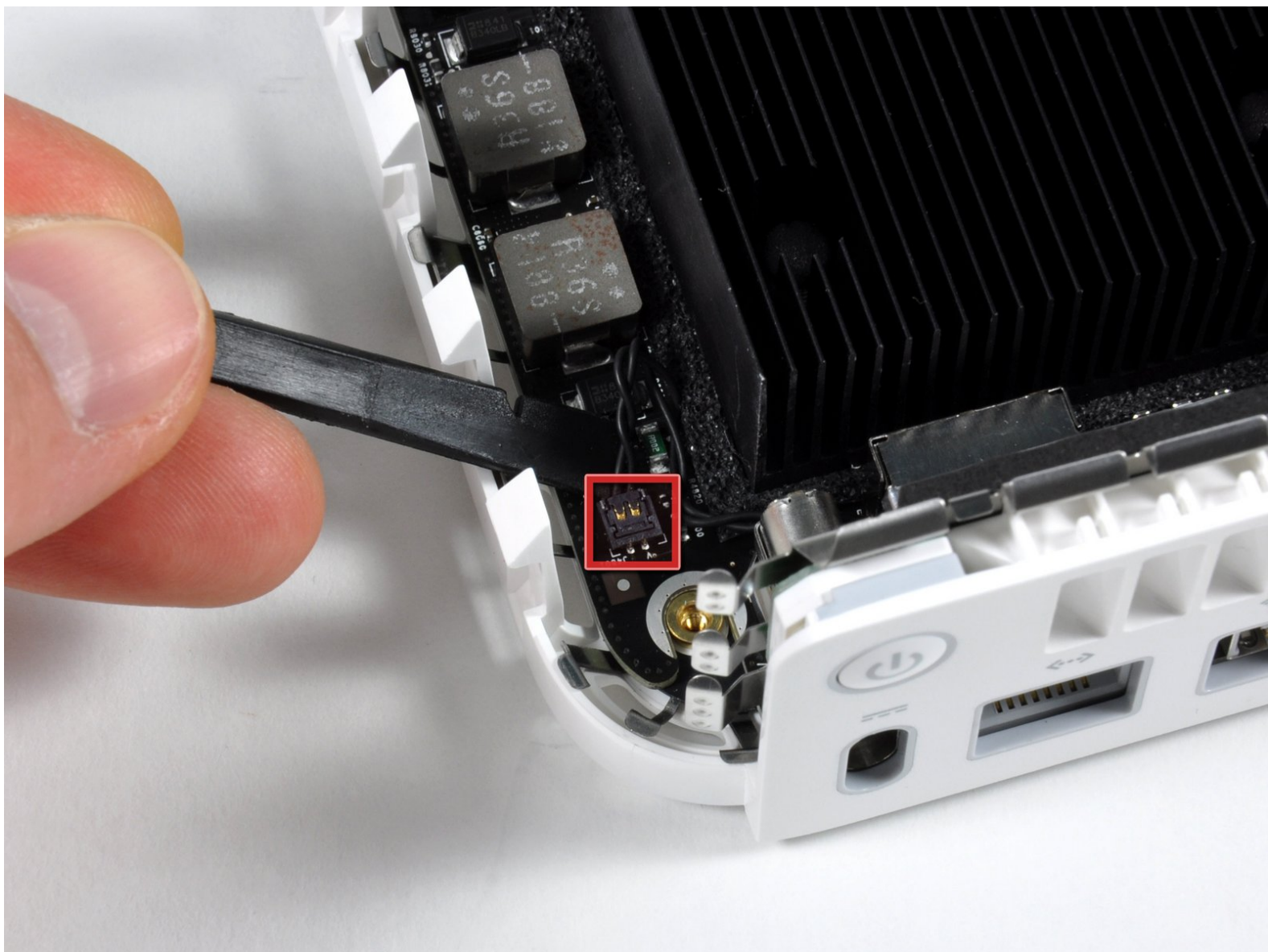




Mac mini Model A1283 Logic Board Replacement

Written By: Walter Galan



INTRODUCTION

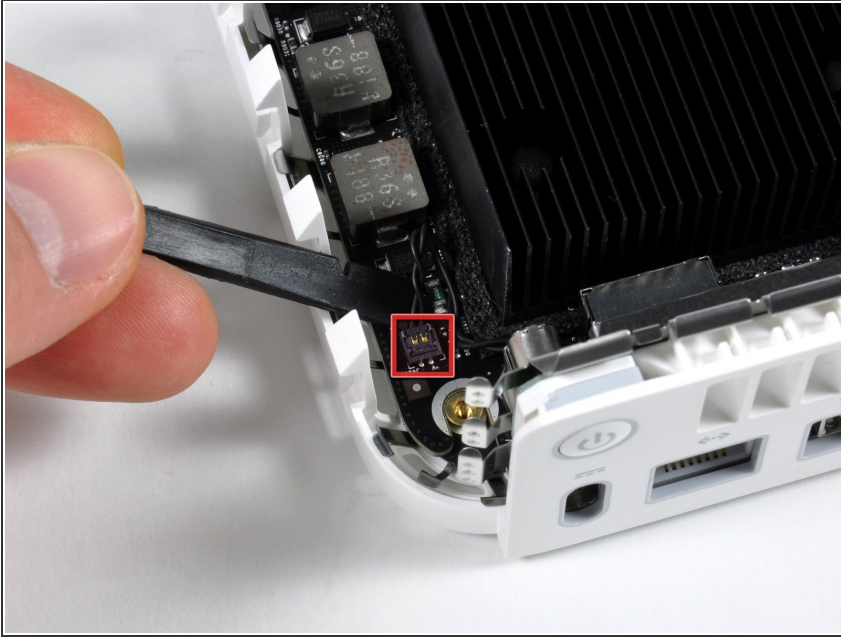
Replace a faulty logic board using this guide.



TOOLS:

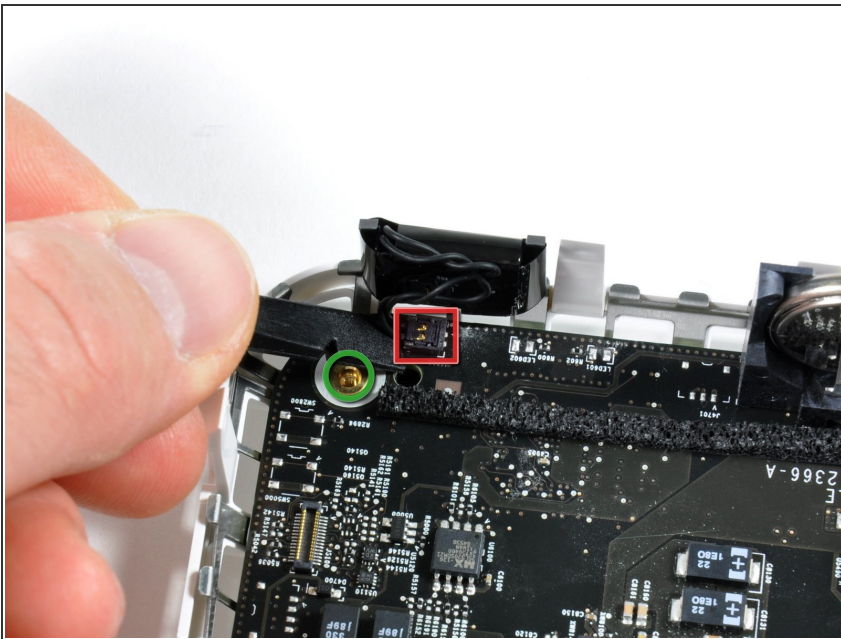
- [Spudger](#) (1)
 - [T10 Torx Screwdriver](#) (1)
-

Step 1 — Logic Board



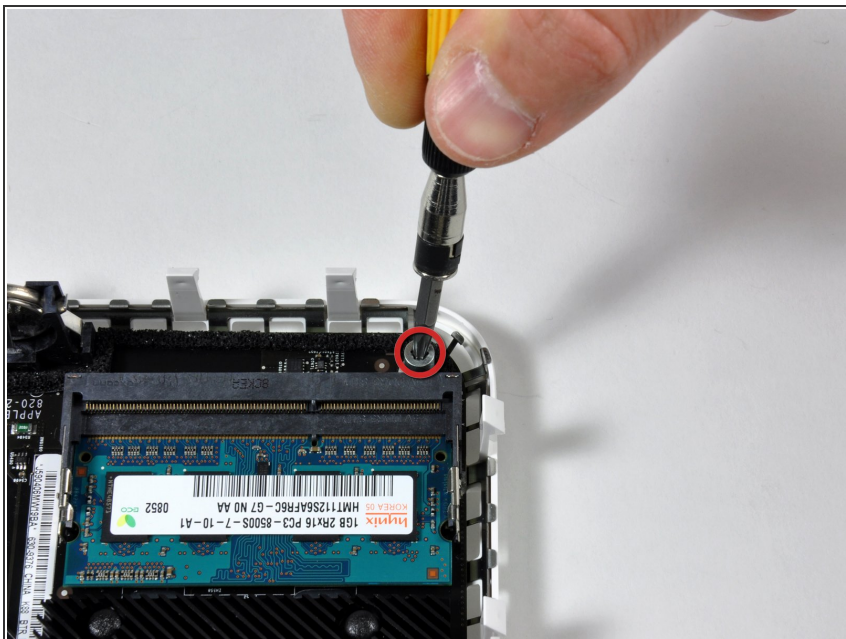
- Use the flat end of a spudger to pry the power button cable connector up off the logic board.

Step 2



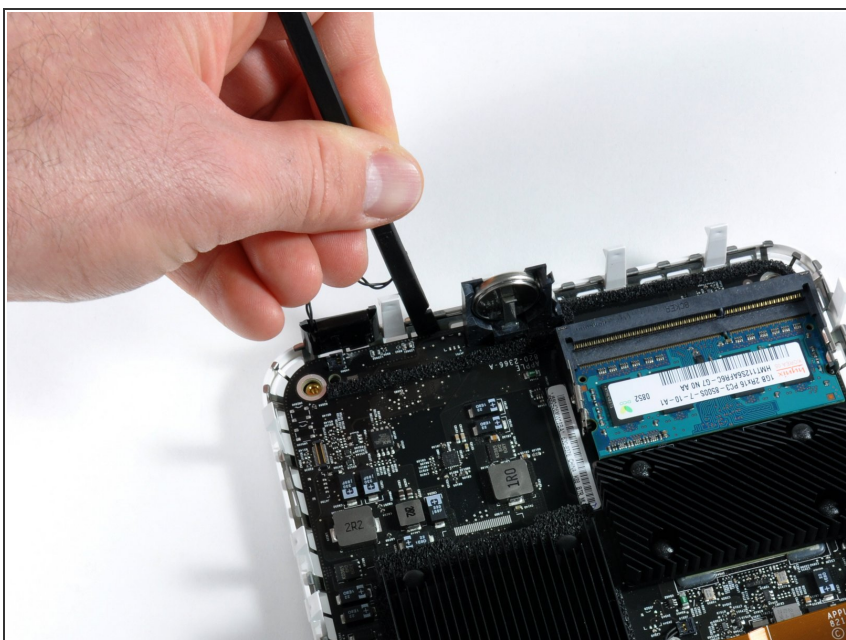
- Use the flat end of a spudger to pry the sleep light cable connector up off the logic board.
- ★ During reassembly, make sure the cable does not come near the lug on the bottom case (shown in green) to avoid damaging the cable.

Step 3



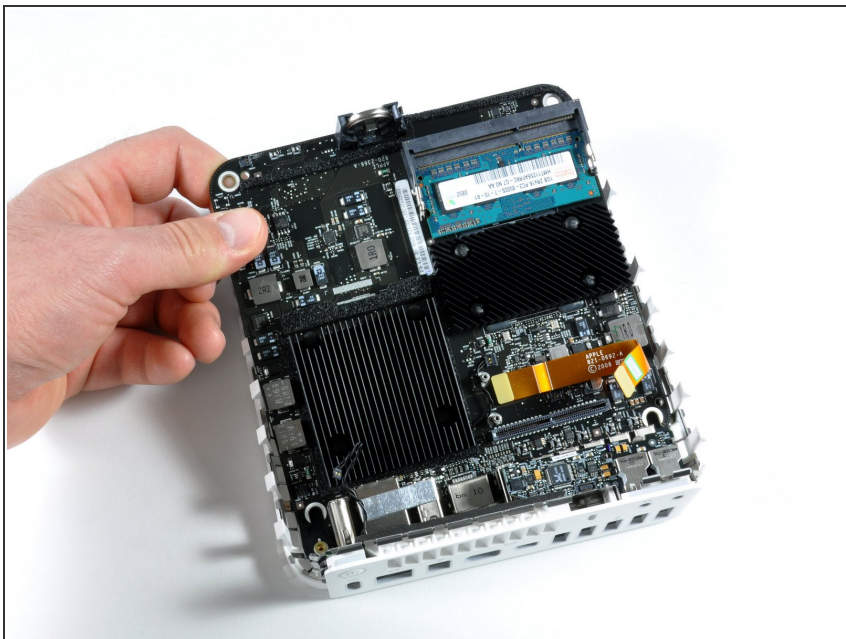
- Remove the single T10 Torx lug next to the RAM sockets on the logic board.

Step 4



- Use a spudger to lift the free end of the logic board off the bottom housing near the PRAM battery.

Step 5



- While slightly lifting the free end of the board pull it away from the port side of the mini, minding any edges that may get caught.

To reassemble your device, follow these instructions in reverse order.