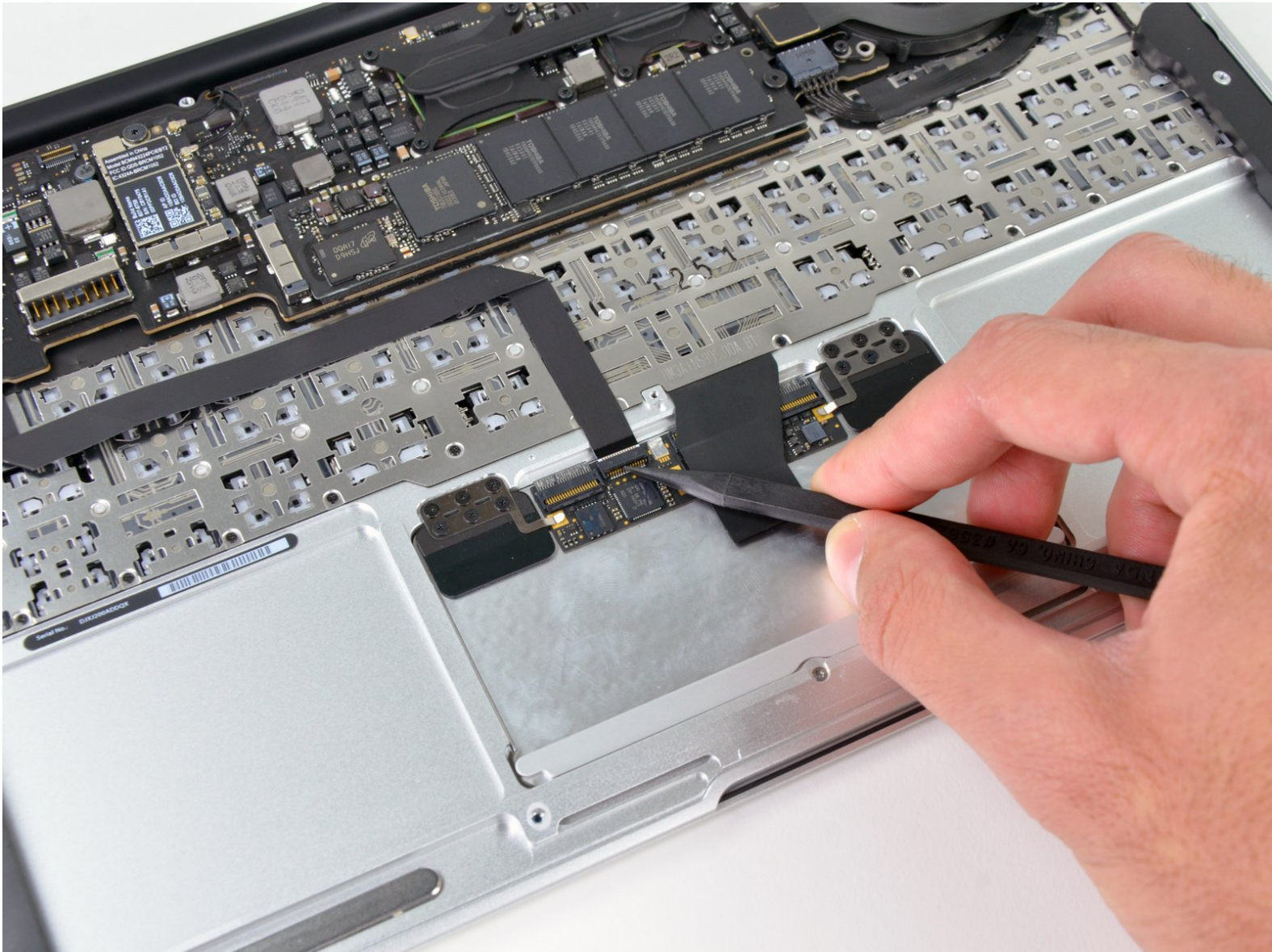




# MacBook Air 11" Late 2010 Trackpad Replacement

Remove the trackpad from your MacBook Air 11" Late 2010.

Written By: Andrew Optimus Goldheart



# INTRODUCTION

Remove the trackpad from your MacBook Air 11" Late 2010.



## TOOLS:

- [P5 Pentalobe Screwdriver Retina MacBook Pro and Air](#) (1)
- [Phillips #00 Screwdriver](#) (1)
- [Spudger](#) (1)
- [T5 Torx Screwdriver](#) (1)



## PARTS:

- [MacBook Air 11" \(Late 2010\) Trackpad](#) (1)
- [MacBook Air Trackpad Brackets and Screws](#) (1)
- [MacBook Air 11" \(Late 2010\) Trackpad Cable](#) (1)

## Step 1 — Lower Case



- ✦ Before proceeding, close your computer and lay it on a soft surface top-side down.
- Remove the following ten screws:
  - Two 8 mm 5-point Pentalobe screws
  - Eight 2.5 mm 5-point Pentalobe screws
- i The special screwdriver needed to remove the eight 5-point Pentalobe screws can be found [here](#).

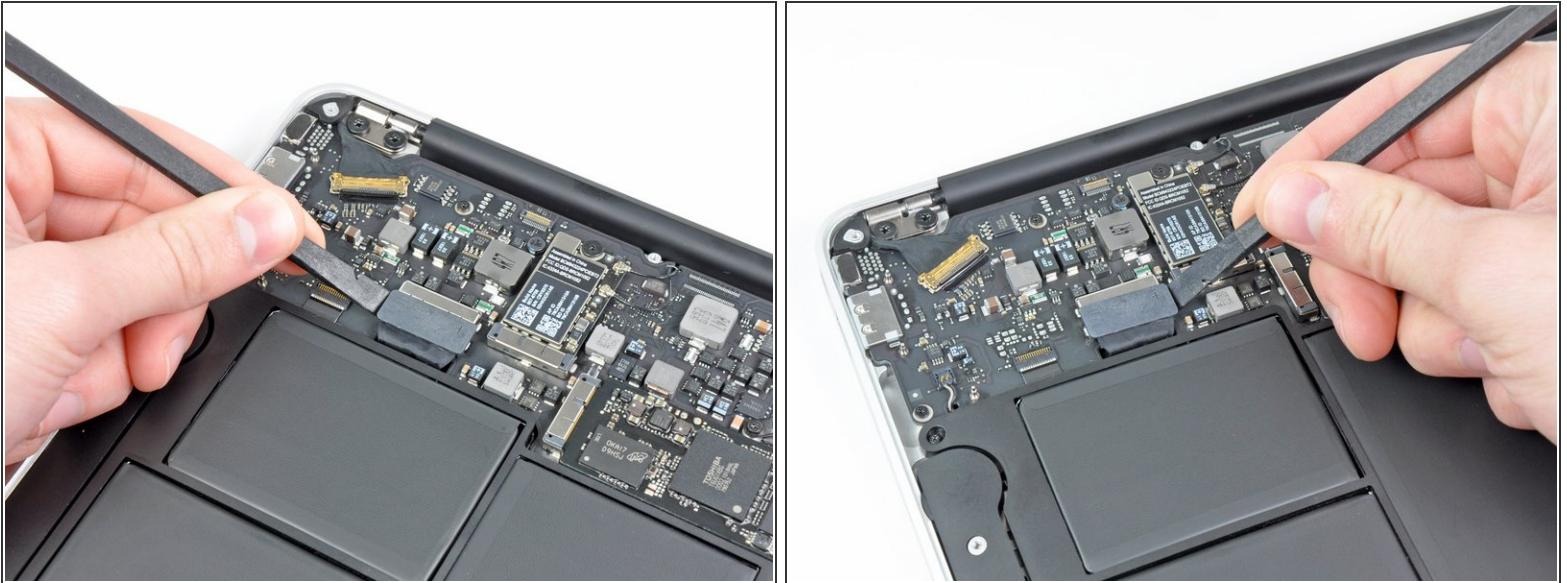
## Step 2



- Wedge your fingers between the display and the lower case and pull upward to pop the lower case off the Air.
- Remove the lower case and set it aside.



## Step 3 — Battery



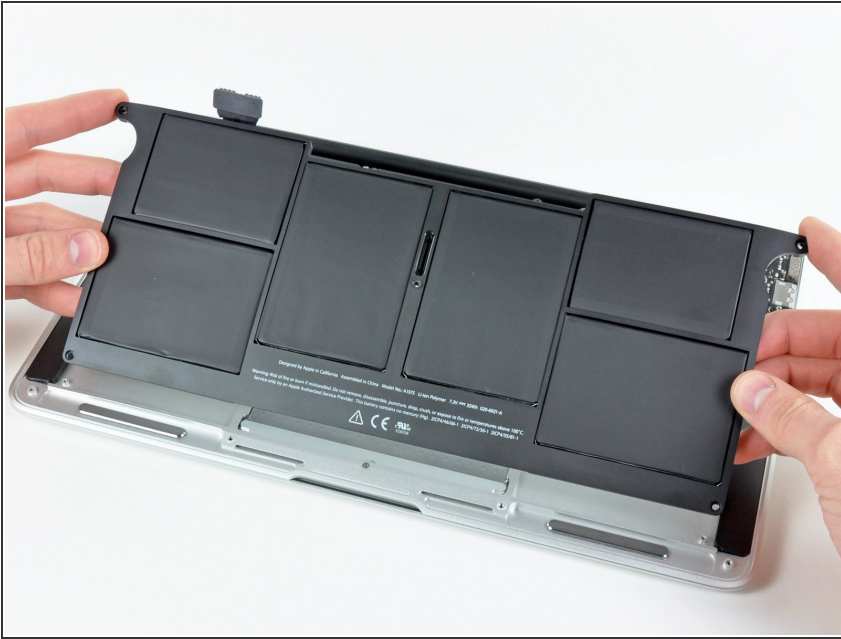
- Use the flat end of a spudger to pry both short sides of the battery connector upward to disconnect it from its socket on the logic board.
- Bend the battery cable slightly away from the logic board so the connector will not accidentally contact its socket.

## Step 4



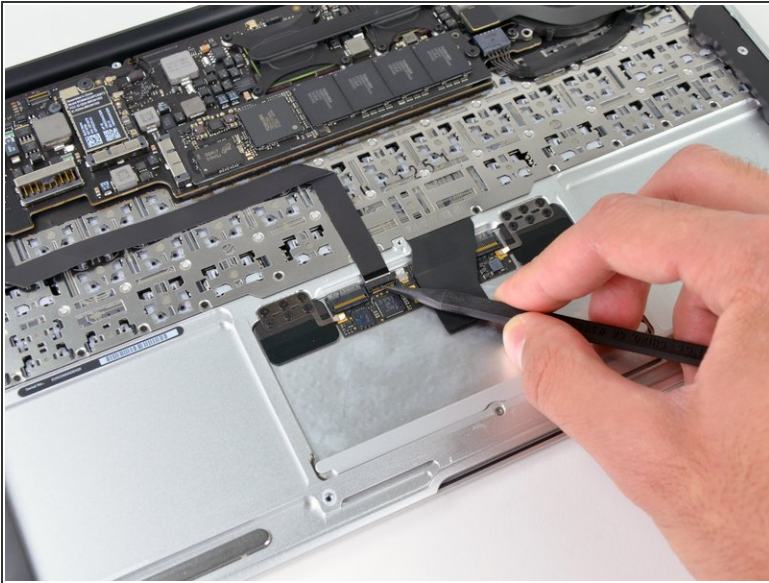
- Remove the following five screws securing the battery to the upper case:
  - Two 5.2 mm T5 Torx screws
  - One 6 mm T5 Torx screw
  - Two 2.6 mm T5 Torx screws

## Step 5



- ⚠ When handling the battery, avoid squeezing or touching the six exposed lithium polymer cells.
- Lift the battery from its edge nearest the logic board and remove it from the upper case.
- ★ If you're installing a new battery, you should [calibrate](#) it after installation:
  - Charge it to 100%, and then keep charging it for at least 2 more hours. Next, unplug and use it normally to drain the battery. When you see the low battery warning, save your work, and keep your laptop on until it goes to sleep due to low battery. Wait at least 5 hours, then charge your laptop uninterrupted to 100%.
  - If you notice any unusual behavior or problems after installing your new battery, you may need to [reset your MacBook's SMC](#).

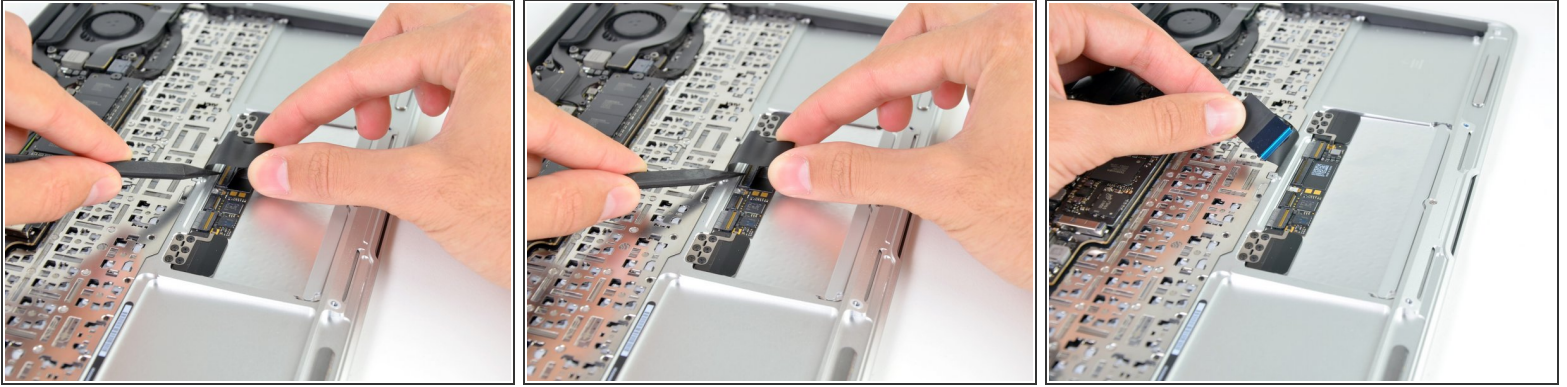
## Step 6 — Trackpad



- Use the tip of a spudger to pry up the retaining flap on the trackpad data cable ZIF connector.
- ⚠ Be careful to pry on the hinged flap, not the connector itself; the connector is delicate and may break.
- Gently slide the trackpad ribbon cable out of the ZIF connector.

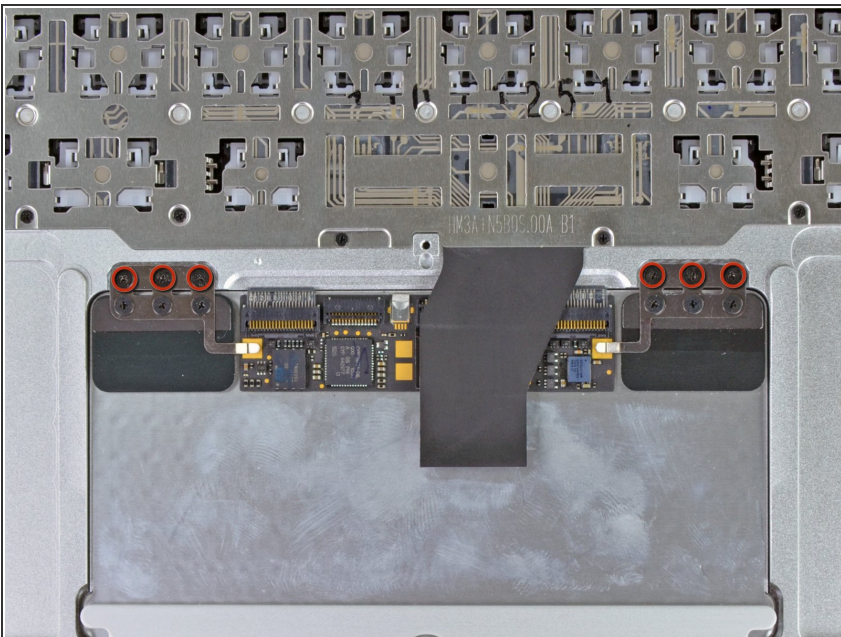


## Step 7



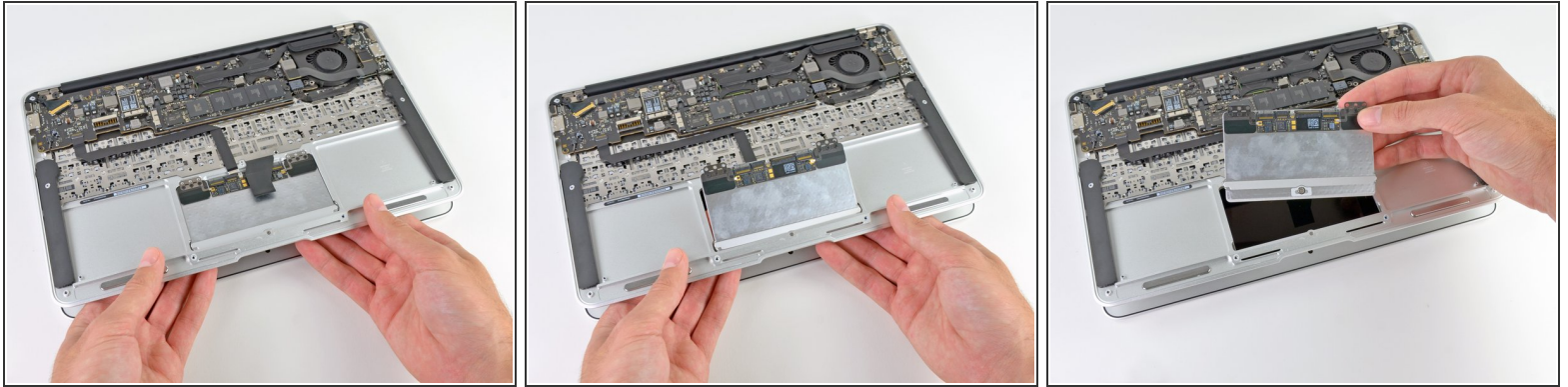
- With one hand, lift the keyboard ribbon cable up and push it slightly away from the trackpad to access the ZIF connector underneath.
  - Use a spudger tip to pry up the retaining flap on the keyboard ribbon cable ZIF connector.
- ⚠ Be careful to pry on the hinged flap, not the connector itself; the connector is delicate and may break.
- Gently slide the keyboard ribbon cable out of the ZIF connector.

## Step 8



- Remove the six 1.5 mm Phillips #00 screws that secure the trackpad assembly to the upper case.

## Step 9



- Open the MacBook about 10 degrees.
- While supporting the upper case, press up on the side of the trackpad closest to the logic board.
- Remove the trackpad.

To reassemble your device, follow these instructions in reverse order.