



# MacBook Air 11" Mid 2011 AirPort/Bluetooth Card Replacement

Replace the AirPort/Bluetooth card on your Mid 2011 MacBook Air 11".

Written By: Walter Galan



# INTRODUCTION

Use this guide to replace a failed AirPort/Bluetooth card. Note that the the airport antenna cables in the Macbook Air 11.6 inch 2011 model are longer than that of the 2010 model. If you're thinking of an easy swap of screen assembly between these two models, it will not work.



## TOOLS:

- [P5 Pentalobe Screwdriver Retina MacBook Pro and Air](#) (1)
- [Spudger](#) (1)
- [T5 Torx Screwdriver](#) (1)



## PARTS:

- [MacBook Air \(Late 2010/Mid 2011\) AirPort/Bluetooth Board](#) (1)

## Step 1 — Lower Case



- i Shut down and close your computer. Lay it on a soft surface top-side down.
- Remove the following ten screws:
  - Two 8 mm 5-point Pentalobe screws
  - Eight 2.5 mm 5-point Pentalobe screws
- i The special screwdriver needed to remove the 5-point Pentalobe screws can be found [here](#).

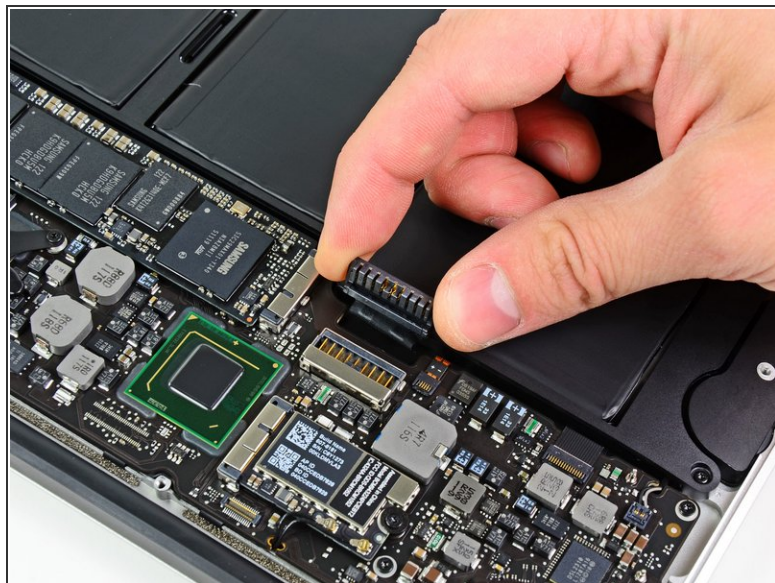
## Step 2




- Wedge your fingers between the display and the lower case and pull upward to pop the lower case off the Air.



## Step 3 — Battery



 In this step you will disconnect the battery to help avoid shorting out any components during service.

- Use the flat end of a spudger to pry both short sides of the battery connector upward to disconnect it from its socket on the logic board.
- Bend the battery cable slightly away from the logic board so the connector will not accidentally contact its socket.

## Step 4 — AirPort/Bluetooth Card



- Use the flat end of a spudger to pry both antenna connectors up from their sockets on the AirPort/Bluetooth card.

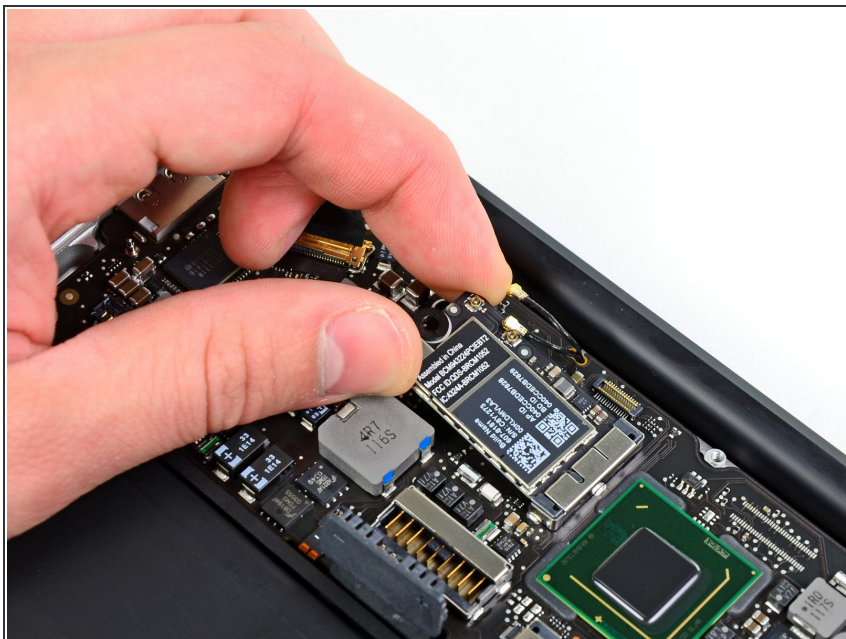
## Step 5



- Remove the single 2.9 mm T5 Torx screw securing the AirPort/Bluetooth card to the logic board.



## Step 6



- Slightly lift the free end of the AirPort/Bluetooth board and pull it out of its socket on the logic board.
- ⚠ To avoid damaging its socket on the logic board, do not excessively lift the free end of the AirPort/Bluetooth card.
- Remove the AirPort/Bluetooth board from the Air.

To reassemble your device, follow these instructions in reverse order.