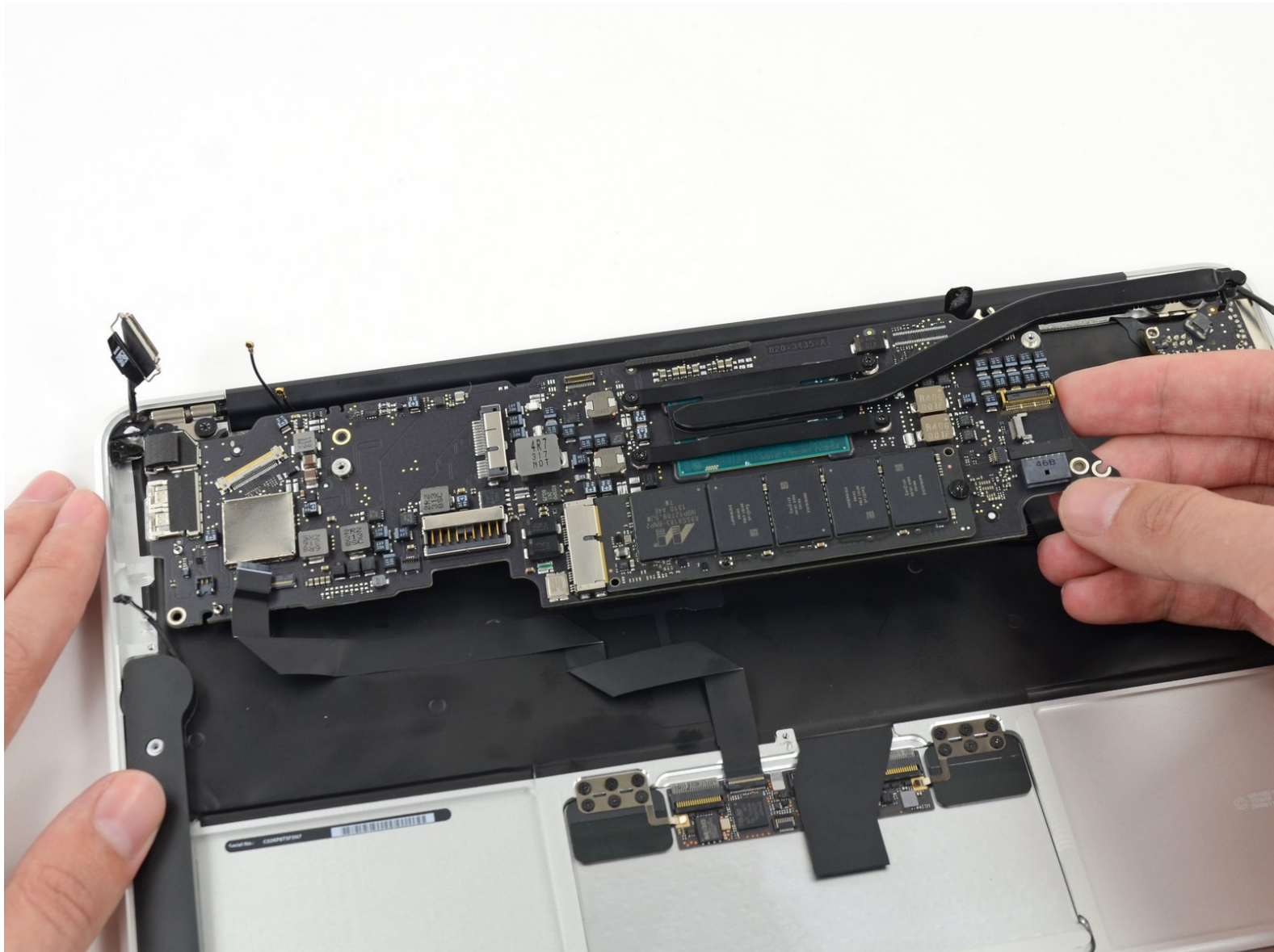




# MacBook Air 11" Mid 2013 Logic Board Assembly Replacement

Prereq to remove the logic board.

Written By: Sam Goldheart



---

# INTRODUCTION

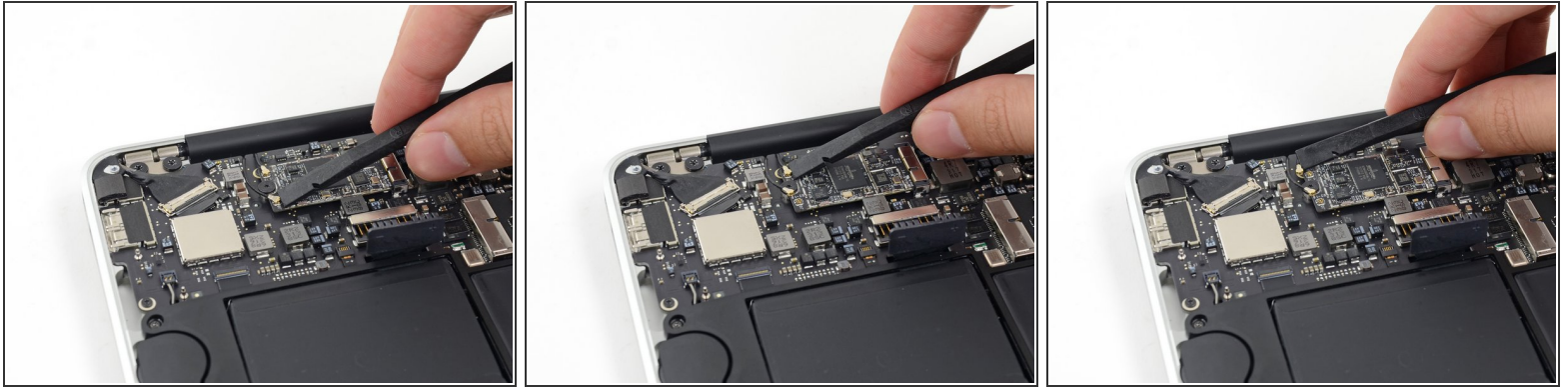
Prereq to remove the logic board.



## TOOLS:

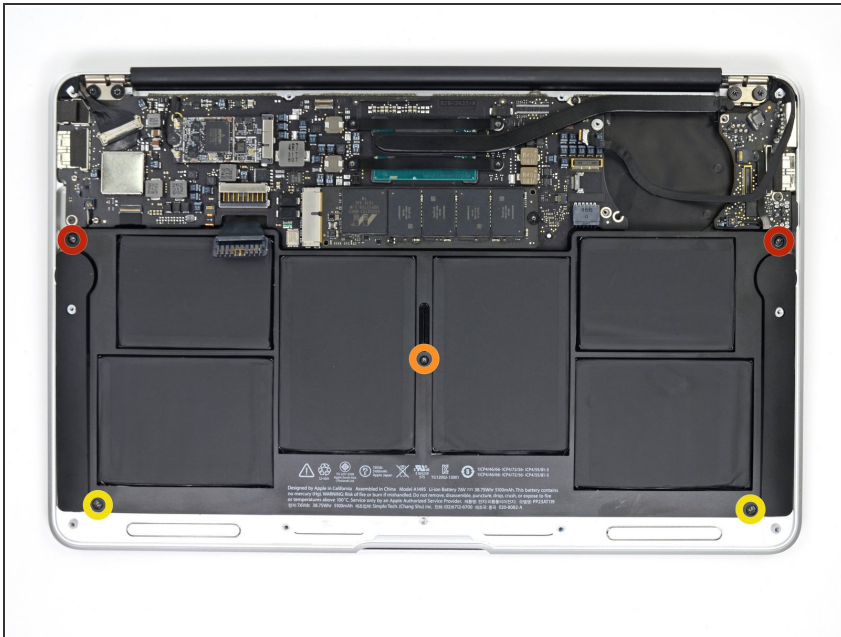
- [Spudger](#) (1)
  - [T5 Torx Screwdriver](#) (1)
-

## Step 1 — Logic Board Assembly



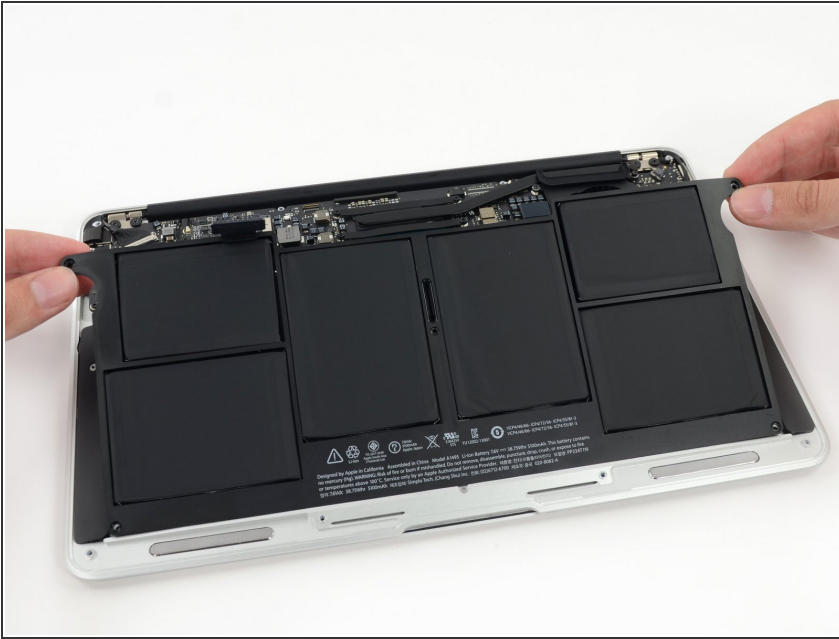
- Use the flat end of a spudger to pry both antenna connectors up from their sockets on the AirPort/Bluetooth card, and move them out of the way.

## Step 2



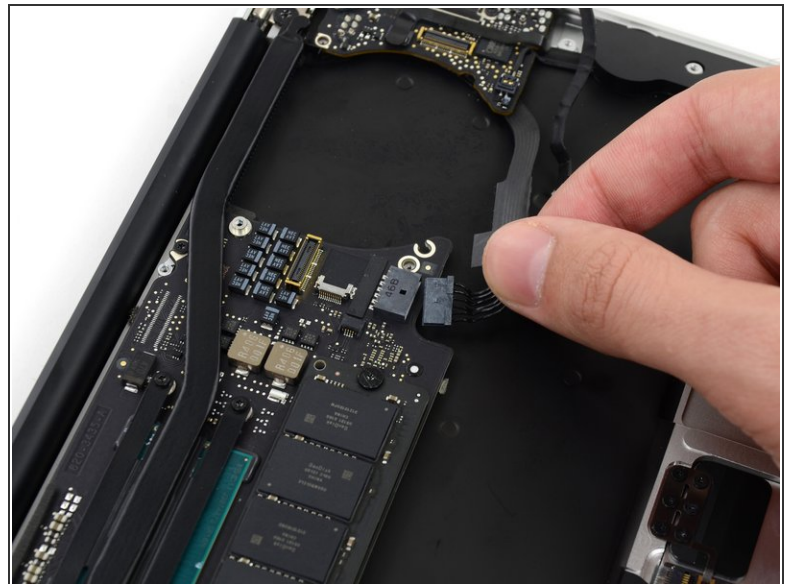
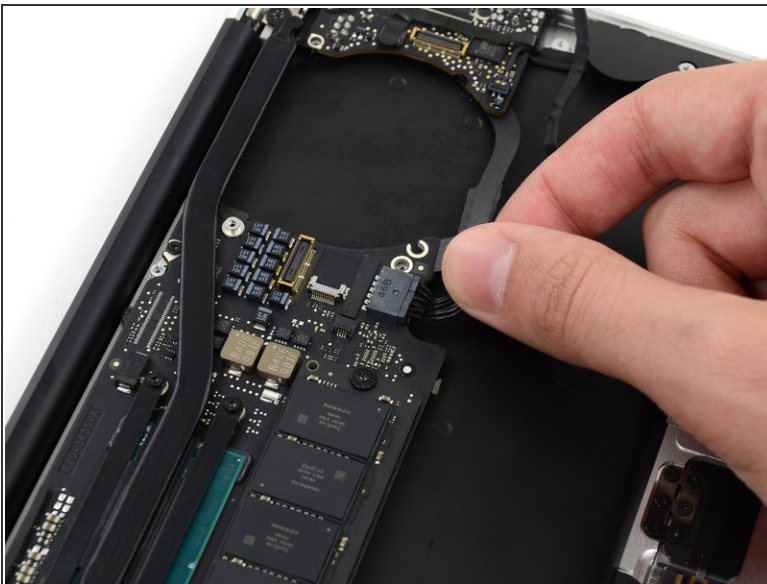
- Remove the following five screws securing the battery to the upper case:
  - Two 5.2 mm T5 Torx screws
  - One 6 mm T5 Torx screw
  - Two 2.6 mm T5 Torx screws

## Step 3



- ⚠ When handling the battery, avoid squeezing or touching the six exposed lithium polymer cells.
- Lift the battery from its edge nearest the logic board and remove it from the upper case.

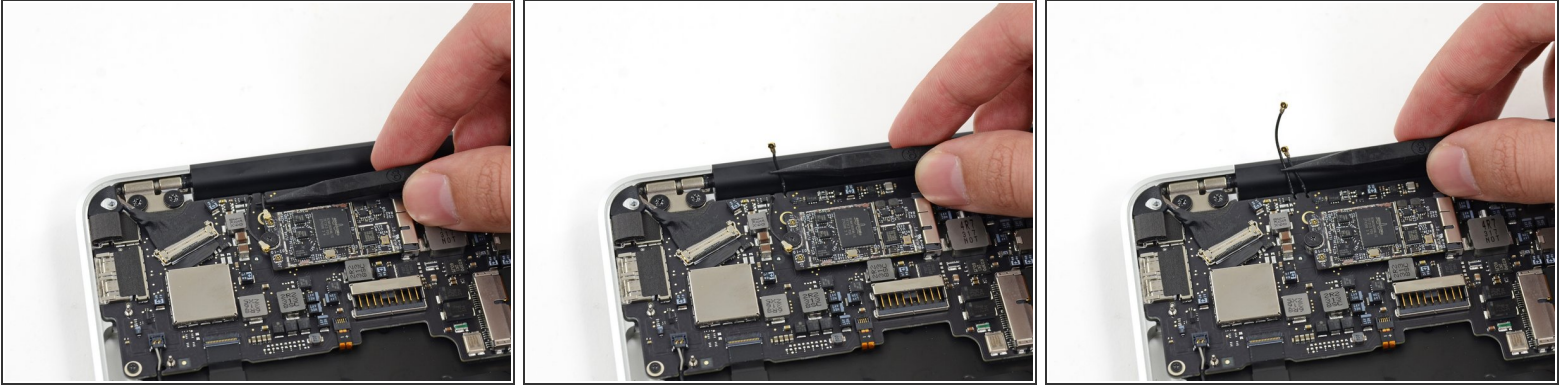
## Step 4



- Disconnect the I/O board by pulling the power cable away from its socket on the logic board.
- ⓘ Pull the cable parallel to the face of the logic board toward the front edge of the Air.

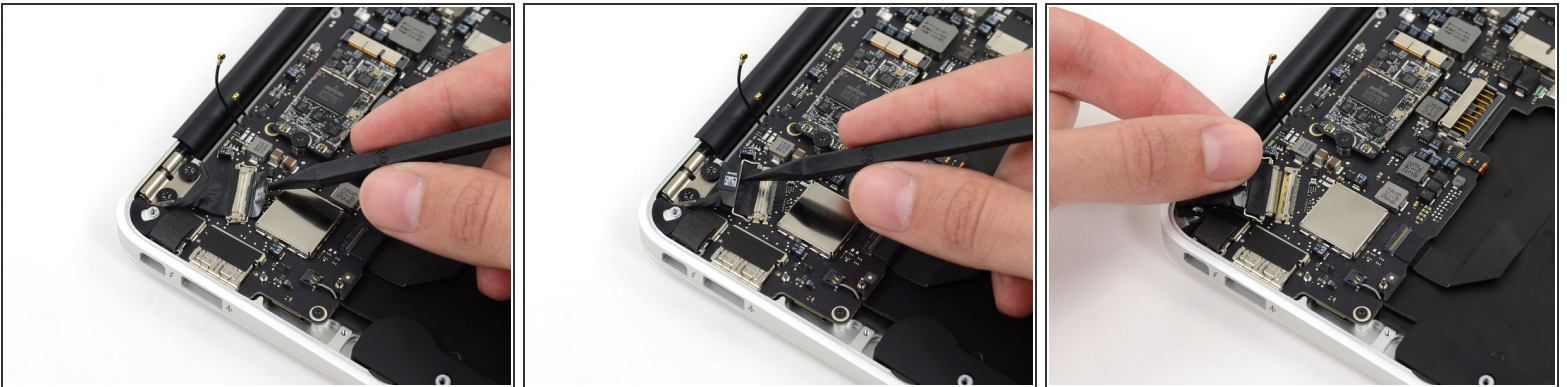


## Step 5




- Use the tip of a spudger to de-route the antenna cables from their notches in the logic board.

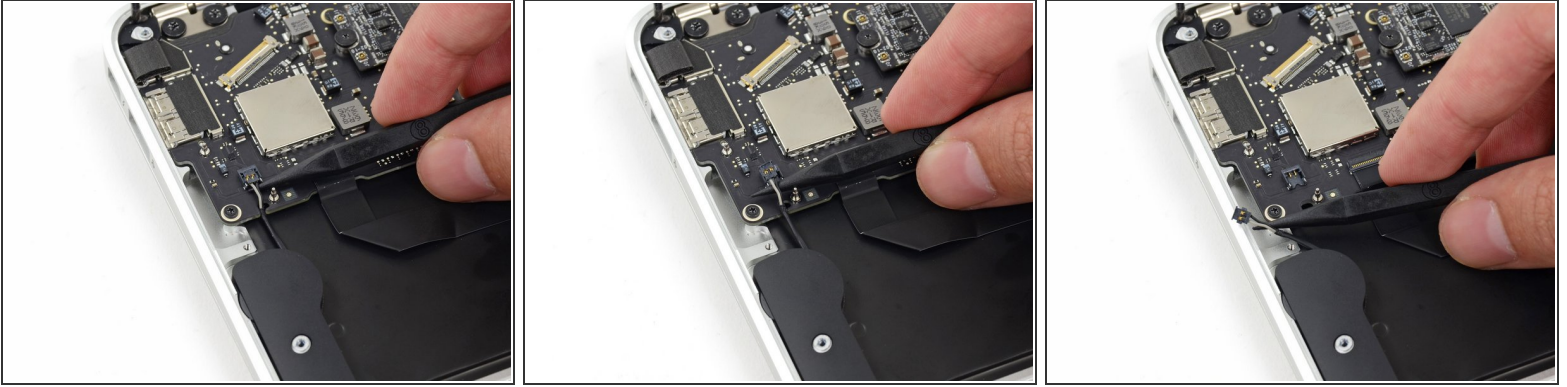
## Step 6



- Gently push the tip of a spudger under the black plastic flap stuck to the display data cable lock to make the lock pop upward and away from the socket.
- While holding the lock away from the socket, gently pull the display data cable out of its socket.

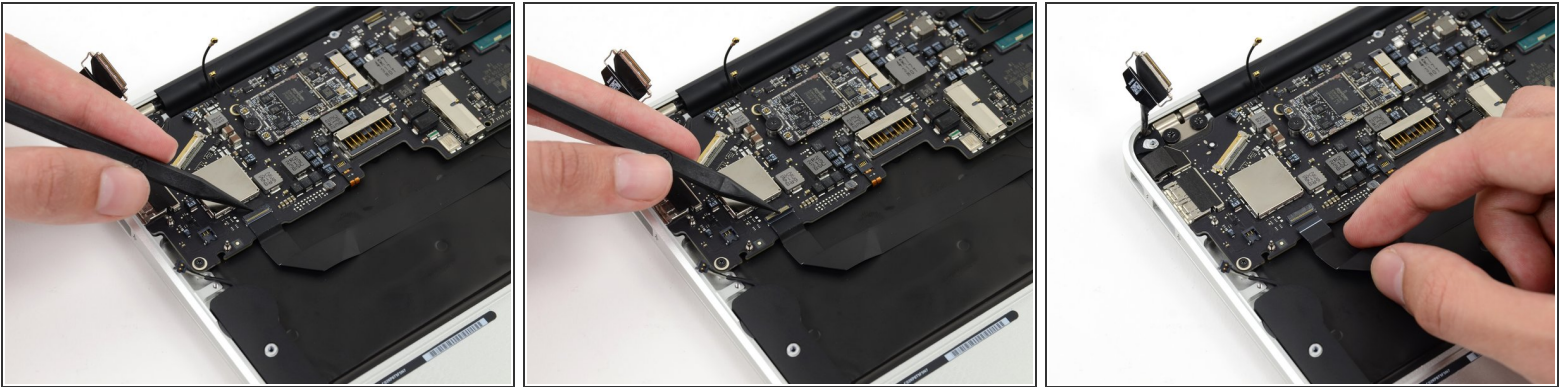
 Do not pull upward on the display data cable as you disconnect it, as its socket may break off the logic board.

## Step 7



- Use the tip of a spudger to pry under the speaker cable connector, lifting it straight up from its socket.
- De-route the cable from its notch in the logic board.

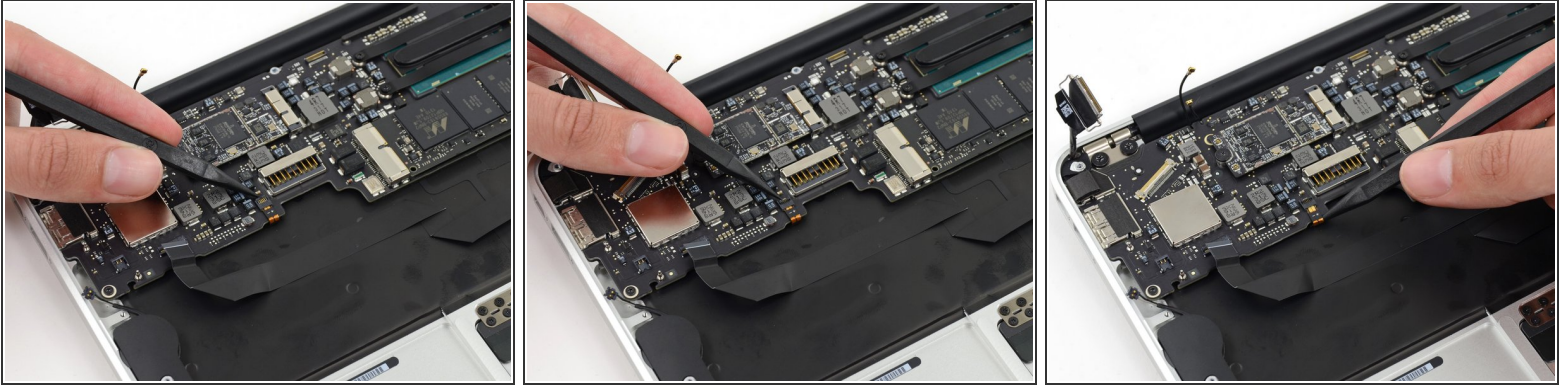
## Step 8



- Use the tip of a spudger or your fingernail to flip up the retaining flap on the trackpad ribbon cable ZIF socket.
- ⚠ Be sure you are prying up on the hinged retaining flap, **not** the socket itself.
- Pull the trackpad ribbon cable straight out of its socket toward the front edge of the Air.



## Step 9



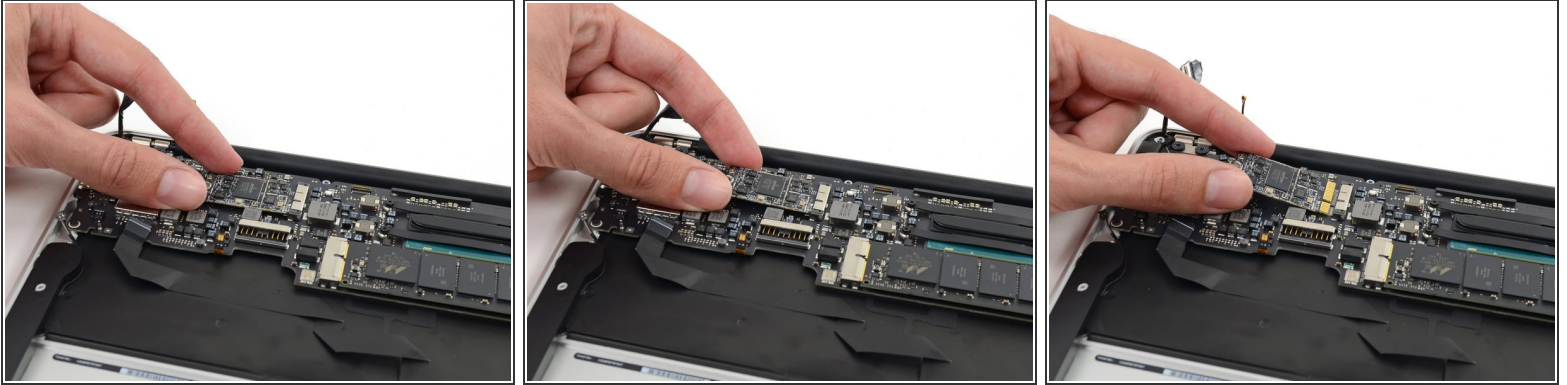
- Use the tip of a spudger to flip up the retaining flap on the keyboard backlight ribbon cable ZIF socket.
- ⚠ Be sure you are prying up on the hinged retaining flap, **not** the socket itself.
- Pull the keyboard backlight ribbon cable out of its socket.

## Step 10



- Remove the single 2.9 mm T5 Torx screw securing the AirPort/Bluetooth card to the logic board.

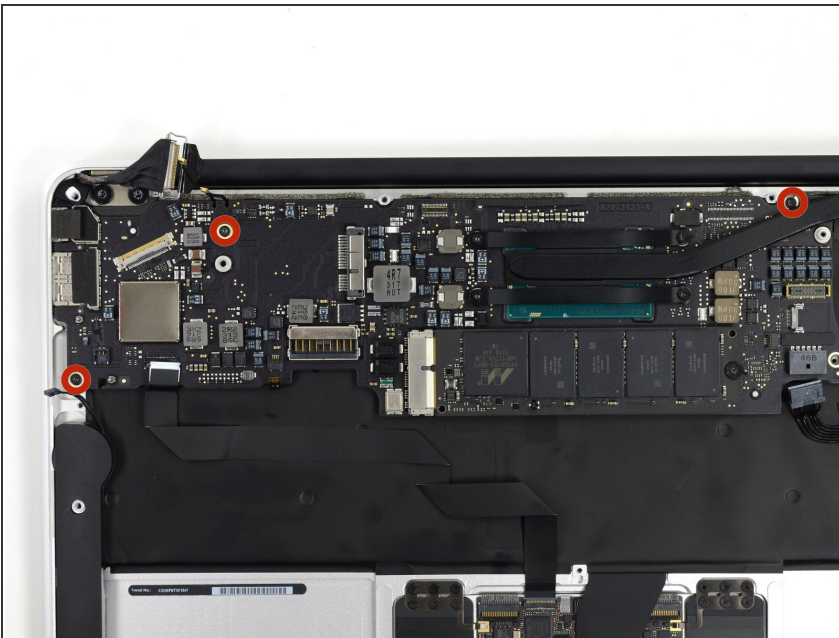
## Step 11



- Slightly lift the free end of the AirPort/Bluetooth board and pull it out of its socket on the logic board.

⚠ To avoid damaging its socket on the logic board, do **not** excessively lift the free end of the AirPort/Bluetooth card.

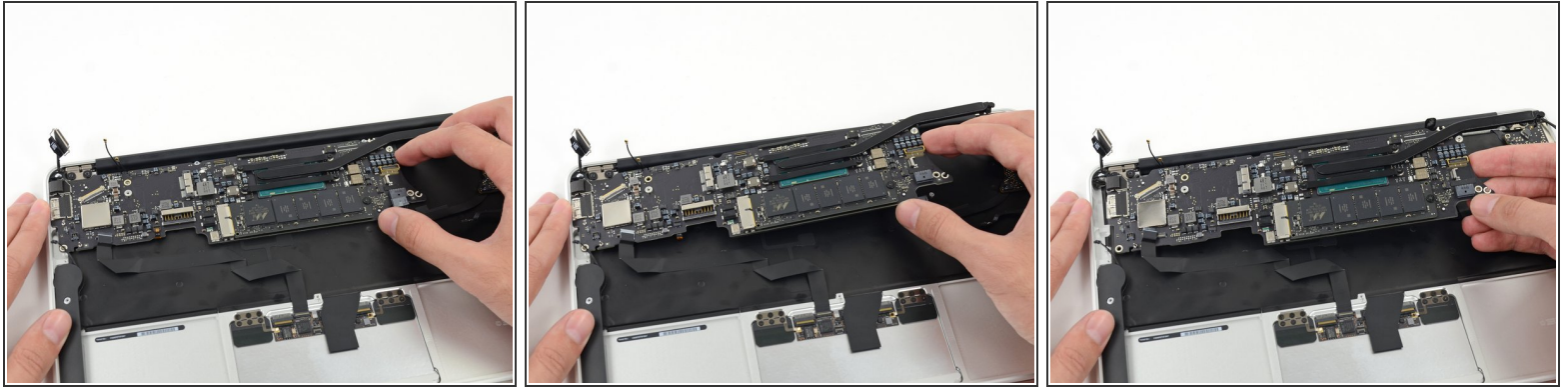
## Step 12



- Remove the three 3.6 mm T5 Torx screws securing the logic board to the upper case.
- In some models these are 3.1 mm T5 Torx screws.



## Step 13



- Gently lift the logic board assembly from the heat sink end and pull it away from the port side of the case to remove it from the Air.
- ★ When replacing the logic board, insert the board's rubber edge under the port-side rubber gasket, then lower the board into place.

To reassemble your device, follow these instructions in reverse order.