



MacBook Air 11" Mid 2013 SSD Replacement

Replace the SSD in your MacBook Air 11" Mid 2013.

Written By: Sam Goldheart



INTRODUCTION

Use this guide to upgrade or replace the solid-state drive in a MacBook Air 11" Mid 2013. This MacBook Air uses a [proprietary storage drive connector](#), and is therefore **not compatible** with common M.2 drives without the use of an adapter.

Before you perform this repair, if at all possible, [back up your existing SSD](#). Then, either familiarize yourself with [internet recovery](#) or [create a bootable external drive](#) so you'll be ready to install macOS onto your new drive and migrate your data to the new SSD.

Finally, we strongly recommend installing macOS 10.13 High Sierra (or a later macOS) before replacing the original SSD from your MacBook Air. Most new SSDs require updated storage drivers not found in versions of macOS prior to High Sierra.



TOOLS:

- [P5 Pentalobe Screwdriver Retina MacBook Pro and Air](#) (1)
- [Spudger](#) (1)
- [T5 Torx Screwdriver](#) (1)



PARTS:

- [OWC Aura Pro X2 SSD](#) (1)


- Remove the following ten screws:
 - Two 8 mm 5-point Pentalobe screws
 - Eight 2.5 mm 5-point Pentalobe screws

A close-up photograph of a person's hand holding a silver laptop. The hand is positioned on the bottom cover of the laptop, which is tilted upwards. The bottom cover is silver and features two large, circular ventilation holes. Several screws are visible, securing the cover. The background is a plain, light-colored surface.

- Wedge your fingers between the display and the lower case and pull upward to pop the lower case off the Air.

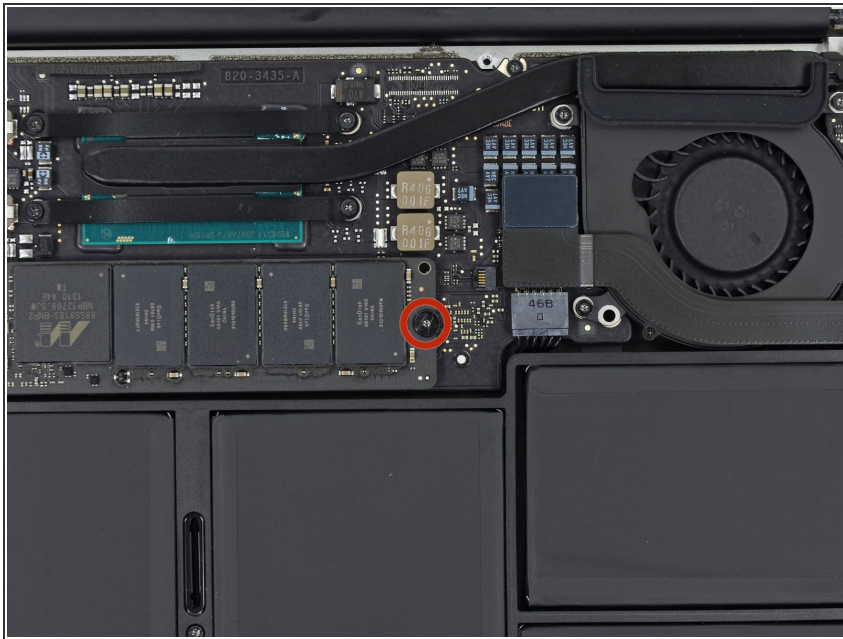
Step 3 — Battery Connector



 In this step you will disconnect the battery to help avoid shorting out any components during service.

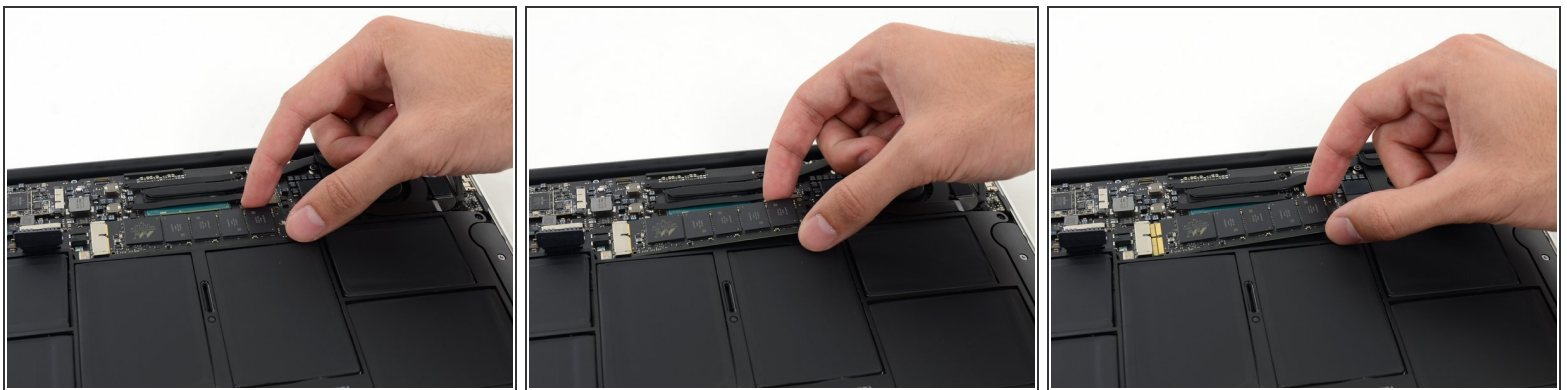
- Use the flat end of a spudger to pry both short sides of the battery connector upward to disconnect it from its socket on the logic board.
- Bend the battery cable slightly away from the logic board so the connector will not accidentally bend back and make contact with its socket.

Step 4 — SSD



- Remove the single 2.9 mm T5 Torx screw securing the SSD to the logic board.

Step 5



- Lift the free end of the SSD just enough to get a good hold of it.

⚠ Do not excessively lift the end of the SSD.

- Pull the drive straight out of its socket and remove it from the logic board.

🔧 When reinstalling the SSD, be sure it is properly seated before reinstalling its retaining screw.

To reassemble your device, follow these instructions in reverse order.

This document was generated on 2020-04-10 11:28:46 PM (MST).

