



# MacBook Air 13" Early 2015 SSD Upgrade to NVMe

Upgrade the SSD the solid-state drive in your MacBook Air 13" Early 2015.

Written By: Dan



## INTRODUCTION

- May cause kernel Panic with hibernation on certain MBA, this guide applies to Early 2015 model only\*
- The 2015 MBA only has 4 PCI-e lanes so you will not be able to take full advantage of NVMe drives\*



### TOOLS:

- [P5 Pentalobe Screwdriver Retina MacBook Pro and Air](#) (1)
- [T5 Torx Screwdriver](#) (1)



### PARTS:

- [Crucial P1 1TB 3D NAND NVMe PCIe M.2 SSD](#) (1)
- [M.2 NGFF M-Key SSD Convert Card to Nvme PCI-E](#) (1)

## Step 1 — Check Compatibility



- MacBook Air Late 2010 - Working - High Sierra, M2 Samsung Evo 860, Adapter
- MacBook Air 2011 - Unknown
- MacBook Air 2012 - Unknown
- MacBook Air 2013 - Unknown
- MacBook Air 2014 - Unknown
- MacBook Air Early 2015 - WORKING- Mojave 10.14.3 to 10.14.6 - Crucial P1 SSD NVME, Adapter.
- MacBook Air 2017 - WORKING - High Sierra, Samsung Evo 960, Adapter.
- MacBook Air 2018 and forward - will not work, No removable drive

## Step 2 — Lower Case



- ❗ Before proceeding, power down your MacBook. Close the display and lay it on a soft surface, top-side down.
- Use a [P5 Pentalobe](#) driver to remove ten screws securing the lower case, of the following lengths:
  - Two 9 mm screws
  - Eight 2.6 mm screws

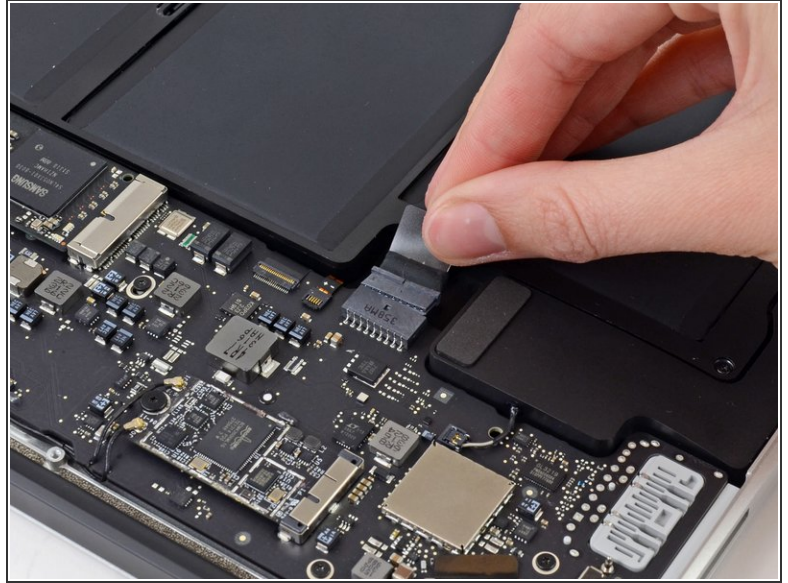
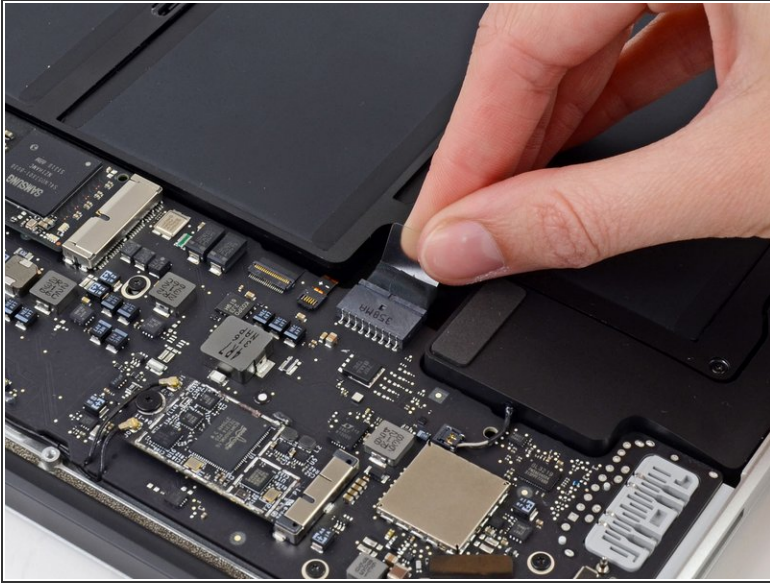
## Step 3





- Wedge your fingers between the display and the lower case and pull upward to pop the lower case off the Air.
- Remove the lower case and set it aside.

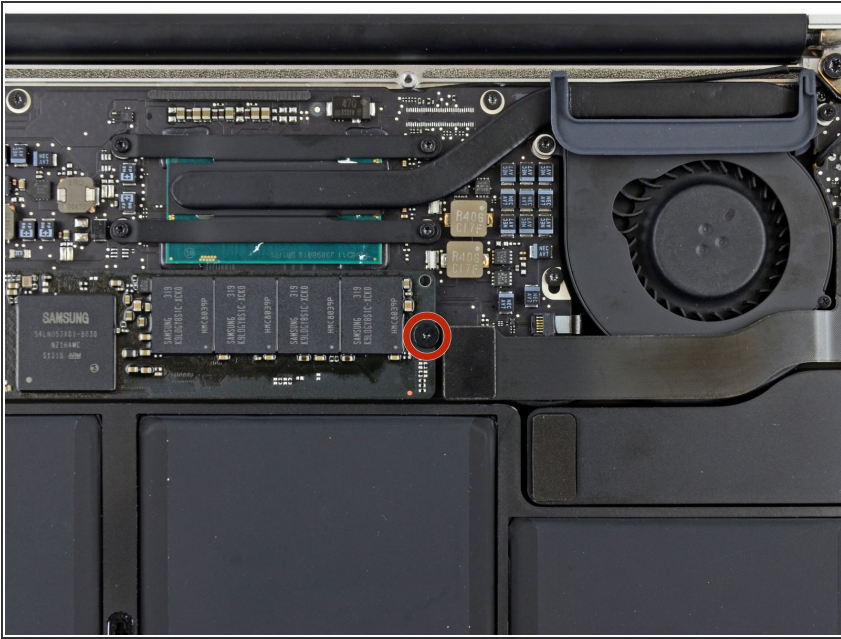


## Step 4 — Battery Connector



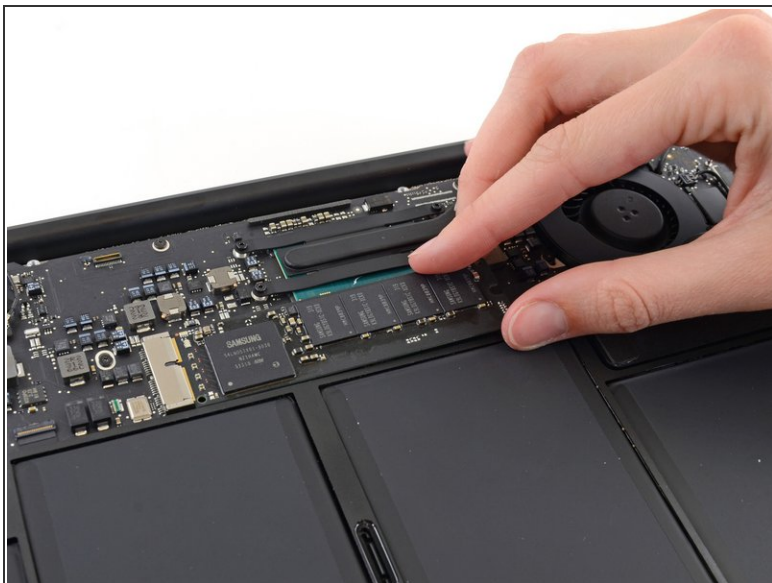
-  To ensure that everything is de-energized and won't turn on while you're working, it is recommended that you disconnect the battery.
- Grab the clear plastic pull tab attached to the battery connector and pull it parallel to the board toward the front edge of the Air.
-  Do not lift upward on the connector as you disconnect it or you risk damage to the connector socket.

## Step 5 — Solid-State Drive



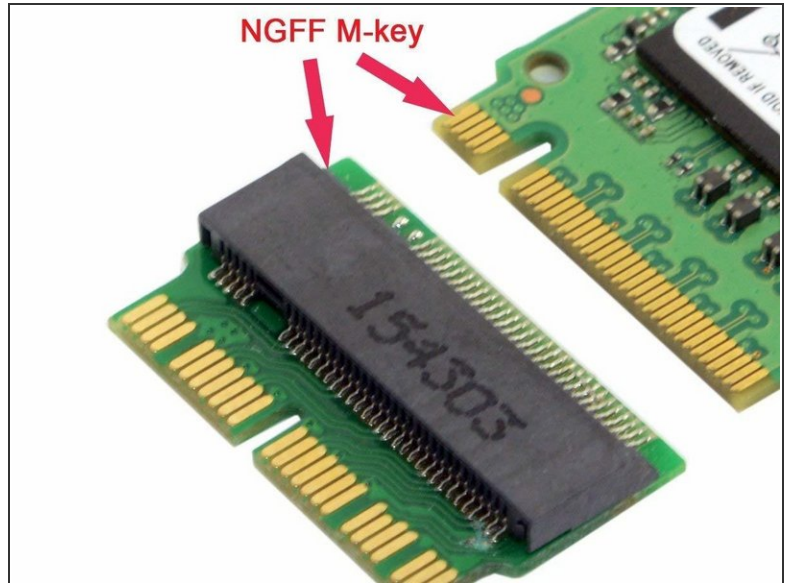
- Remove the single 2.9 mm T5 Torx screw securing the SSD to the logic board.

## Step 6





- Gently lift the end of the SSD about half an inch and pull it straight out of its socket on the logic board.
  - ⚠ Don't lift the SSD more than half an inch—doing so may damage the SSD or its socket on the logic board.
- ☑ When reinstalling the SSD, be sure it is properly seated before reinstalling its retaining screw.

## Step 7 — SSD - Alternate option using M.2 NVMe SSD



- Carefully insert the new SSD into the adapter, using the length of old drive as a reference for when the SSD is fully in the adapter. The lengths should be the same.
- Insert the SSD and the adapter into the Socket, pushing inward in a straight fashion.
- When reinstalling the SSD, be sure it is properly seated before reinstalling its retaining screw.

 NVMe Drives can cause kernel panics due to sleep /hibernation issues. This can be turned off with the following command.

-  From a Terminal, use the following command to disable hibernation: ----"sudo pmset -a hibernatemode 0" ---- If you later want to enable hibernation, use: "sudo pmset -a hibernatemode 3"

To reassemble your device, follow these instructions in reverse order.