



MacBook Air 13" Early 2017 SSD -NVMe Replacement

Upgrade the SSD the solid-state drive in your MacBook Air 13" Early 2017.

Written By: Dan





TOOLS:

- [P5 Pentalobe Screwdriver Retina MacBook Pro and Air](#) (1)
- [T5 Torx Screwdriver](#) (1)



PARTS:

- [Crucial P1 1TB 3D NAND NVMe PCIe M.2 SSD](#) (1)
- [M.2 NGFF to M-Key MacBook- Air \(2013-2016\) Pro \(2013-2015\)](#) (1)

Step 1 — Check Compatibility



- MacBook Air Late 2010 - Working - High Sierra, M2 Samsung Evo 860, Adapter
- MacBook Air 2011 - Unknown
- MacBook Air 2012 - Unknown
- MacBook Air 2013 - Unknown
- MacBook Air 2014 - Unknown
- MacBook Air Early 2015 - WORKING- Mojave 10.14.3 to 10.14.6 - Crucial P1 SSD NVME, Adapter.
- MacBook Air 2017 - WORKING - High Sierra, Samsung Evo 960, Adapter.
- MacBook Air 2018 and forward - will not work, No removable drive

Step 2 — Lower Case



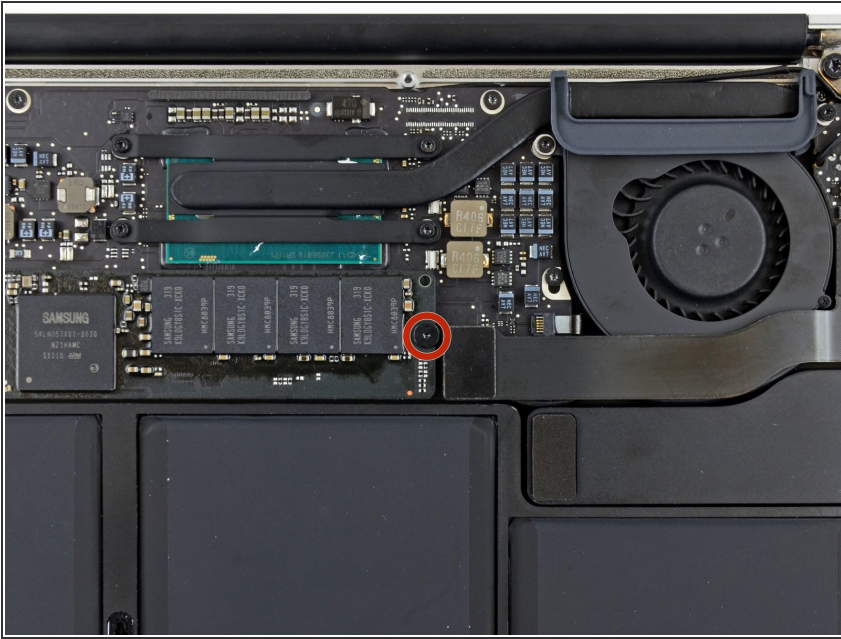
- **i** Before proceeding, power down your MacBook. Close the display and lay it on a soft surface, top-side down.
- Use a [P5 Pentalobe](#) driver to remove ten screws securing the lower case, of the following lengths:
 - Two 9 mm screws
 - Eight 2.6 mm screws

Step 3



- Wedge your fingers between the display and the lower case and pull upward to pop the lower case off the Air.
- Remove the lower case and set it aside.

Step 4 — Solid-State Drive



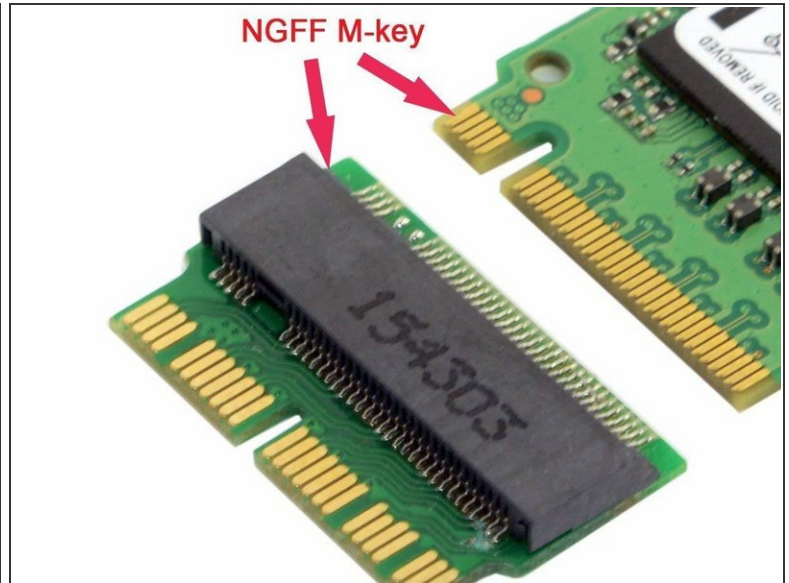
- Remove the single 2.9 mm T5 Torx screw securing the SSD to the logic board.

Step 5



- Gently lift the end of the SSD about half an inch and pull it straight out of its socket on the logic board.
 - ⚠ Don't lift the SSD more than half an inch—doing so may damage the SSD or its socket on the logic board.
- ☑ When reinstalling the SSD, be sure it is properly seated before reinstalling its retaining screw.

Step 6 — SSD -NVMe



- Carefully insert the new SSD into the adapter, using the length of old drive as a reference for when the SSD is fully in the adapter. The lengths should be the same.
 - Insert the SSD and the adapter into the Socket, pushing inward in a straight fashion.
 - When reinstalling the SSD, be sure it is properly seated before reinstalling its retaining screw.
- ⚠ NVMe Drives can cause kernel panics due to sleep /hibernation issues. This can be turned off with the following command.
- From a Terminal, use the following command to disable hibernation: ----"sudo pmset -a hibernatemode 0" ---- If you later want to enable hibernation, use: "sudo pmset -a hibernatemode 3"

To reassemble your device, follow these instructions in reverse order.