



MacBook Air 13" Late 2010 AirPort/Bluetooth Card Replacement

Replace the AirPort/Bluetooth card in your MacBook Air 13" Late 2010.

Written By: Andrew Bookholt



INTRODUCTION

Use this guide to replace your AirPort/Bluetooth card.

[video: <http://www.youtube.com/watch?v=GKTTs9CEB1M>]



TOOLS:

- [P5 Pentalobe Screwdriver Retina MacBook Pro and Air](#) (1)
- [Spudger](#) (1)
- [T5 Torx Screwdriver](#) (1)



PARTS:

- [MacBook Air \(Late 2010/Mid 2011\) AirPort/Bluetooth Board](#) (1)

Step 1 — Lower Case



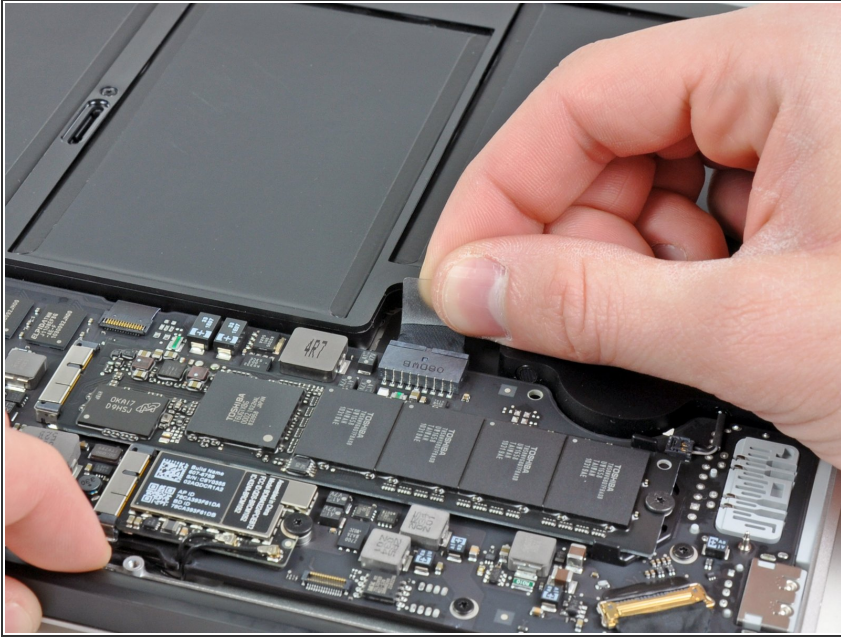
- i Before proceeding, close your computer and lay it on a soft surface top-side down.
- Remove the following ten screws:
 - Two 9 mm 5-point Pentalobe screws
 - Eight 2.6 mm 5-point Pentalobe screws
- i The special screwdriver needed to remove the eight 5-point Pentalobe screws can be found [here](#).

Step 2



- Wedge your fingers between the display and the lower case and pull upward to pop the lower case off the Air.
- Remove the lower case and set it aside.

Step 3 — Battery

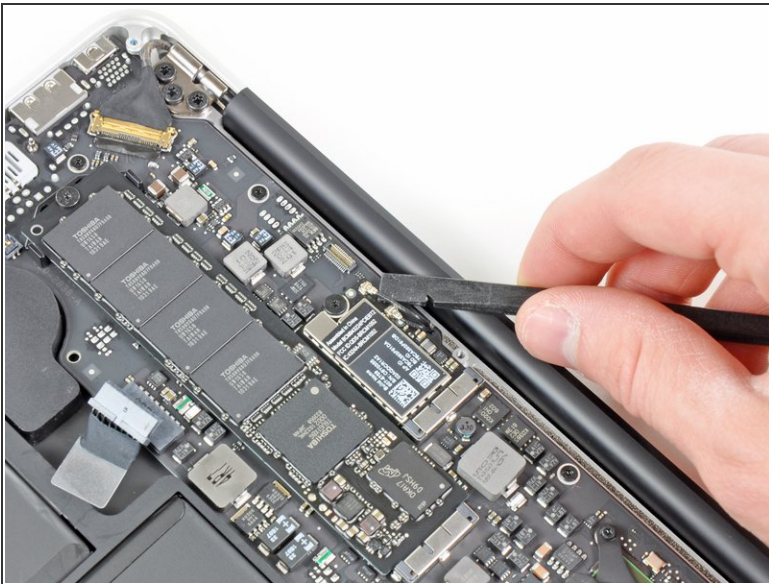


i For precautionary purposes, we advise that you disconnect the battery connector from the logic board to avoid any electrical discharge. This step is **optional** and is not required.

- Grab the clear plastic pull tab attached to the battery connector and pull it toward the front edge of the Air to disconnect the battery from the logic board.

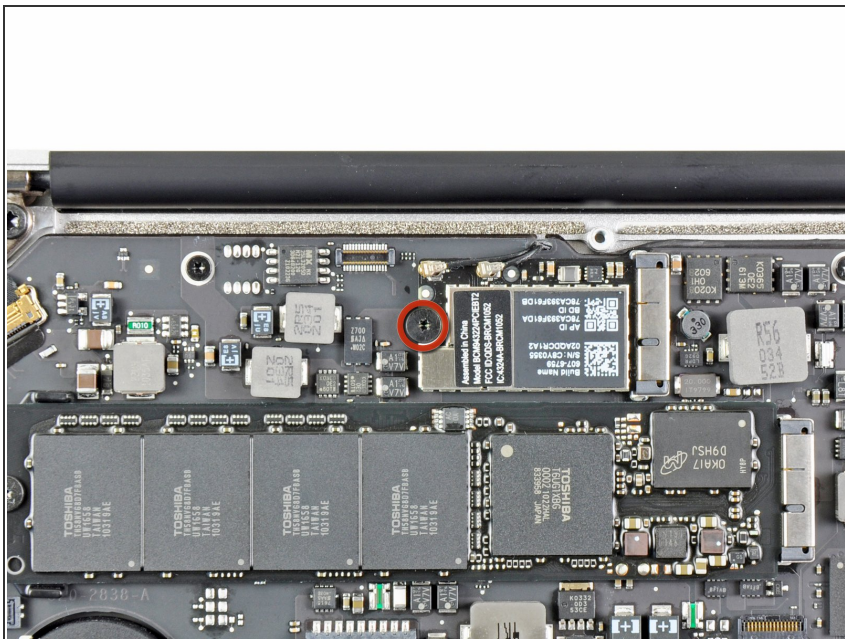
! Do not lift upward on the connector as you disconnect it.

Step 4 — AirPort/Bluetooth Card



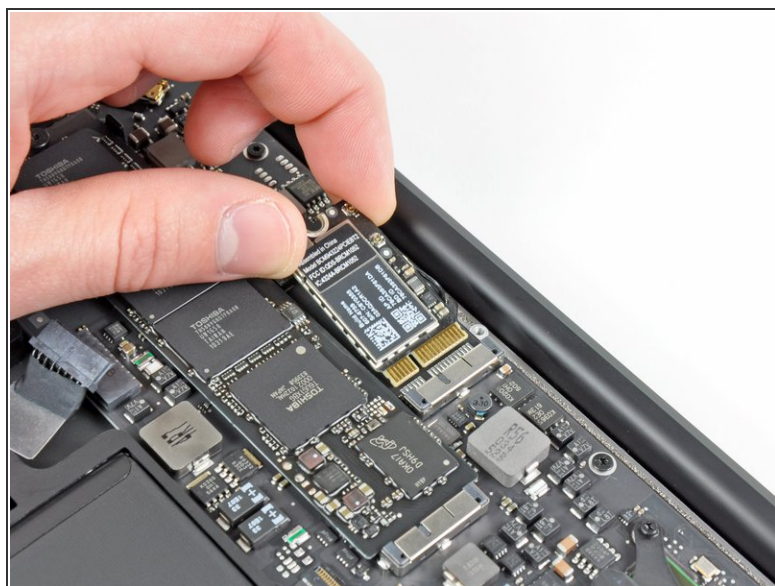
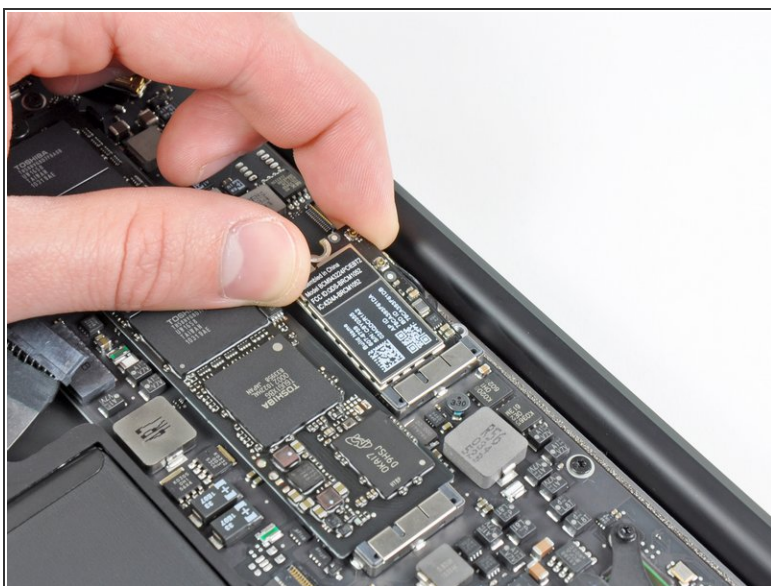
- Use the flat end of a spudger to pry both antenna connectors up from their sockets on the AirPort/Bluetooth card.

Step 5



- Remove the single 2.9 mm T5 Torx screw securing the AirPort/Bluetooth card to the logic board.

Step 6



- Slightly lift the free end of the AirPort/Bluetooth board and pull it out of its socket on the logic board.
- Remove the AirPort/Bluetooth board from the Air.

To reassemble your device, follow these instructions in reverse order.