



# MacBook Air 13" Late 2010 Primary Storage Replacement

Replacing the stock 128 GB storage in a Macbook Air 13" Late 2010 model with Transcend JetDrive 500. This is the 480 GB replacement drive.

Written By: Timothy Lee Russell



---

## INTRODUCTION

Learn how to expand your storage in the Macbook Air 13" Late 2010 model with a Transcend JetDrive.

---



### PARTS:

- [Transcend JetDrive replacement drive](#) (1)
-

## Step 1 — MacBook Air 13" Late 2010 Primary Storage Replacement



- I have a Macbook Air, pretty early days. Late 2010. Got the JetDrive 500 in an attempt to increase drive space.
- Coincidentally, I have no conflict of interest with the company Transcend. I'm just a customer.
- Demographic / Skill level - I'm a software developer who primarily uses a windows machine.

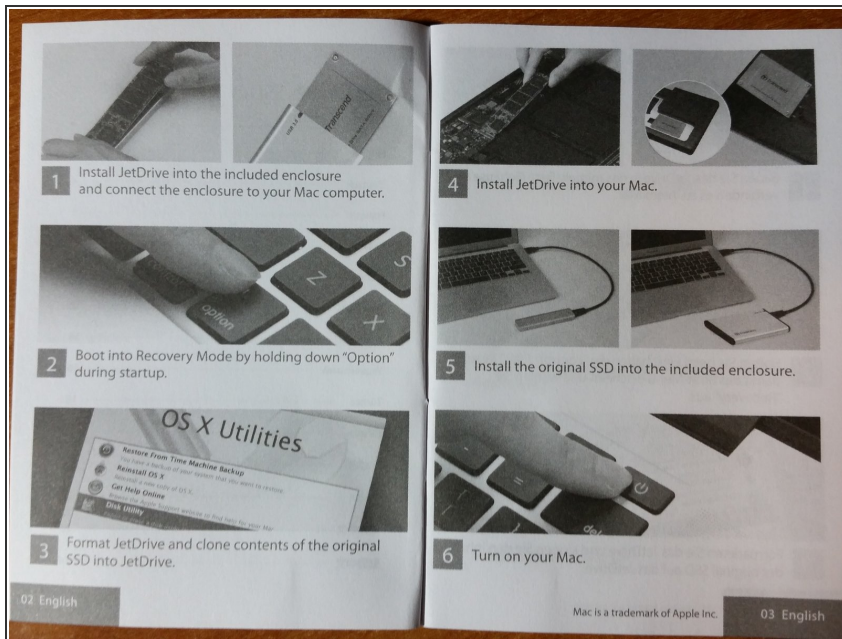
## Step 2



- Comes with the tools that you need. Neat, I like it! Even if you are a home repair kind of guy, you are unlikely to have a magnetically charged screwdriver that can take out tiny Apple screws.
- Also, packaging is nice. No clamshells. Stacks in a box with an eye toward efficiency.
- Nice quality case which you could use to store the external drive case they provide.



## Step 3



- Terse instructions--but I've built 100's of computers over the years, so I think I'll just go for it.
- Later, I will also take a photo of my finger in this most awkward "Option key" position. For the sole purpose of lighting and camera angle. Bring it on Kubrick.

## Step 4



- Take the new storage and put it in the external enclosure.
- When inserting cards like this, hold one side of the connector with two fingers supporting it and gently wiggle the card into place with the other hand. Think, micro-wiggles.
- Put the monstrosity of science you just assembled into the case, connector first. Make sure it seats comfortably and that you can plug the usb cable in.

## Step 5



- Button it up.
- Only use one screw. This is the storage that we're going to put in the Macbook Air in a couple hours after we clone our internal drive to it.

## Step 6



- Attach the Macbook Air to power and shut it down.
- Plug in the new drive enclosure.

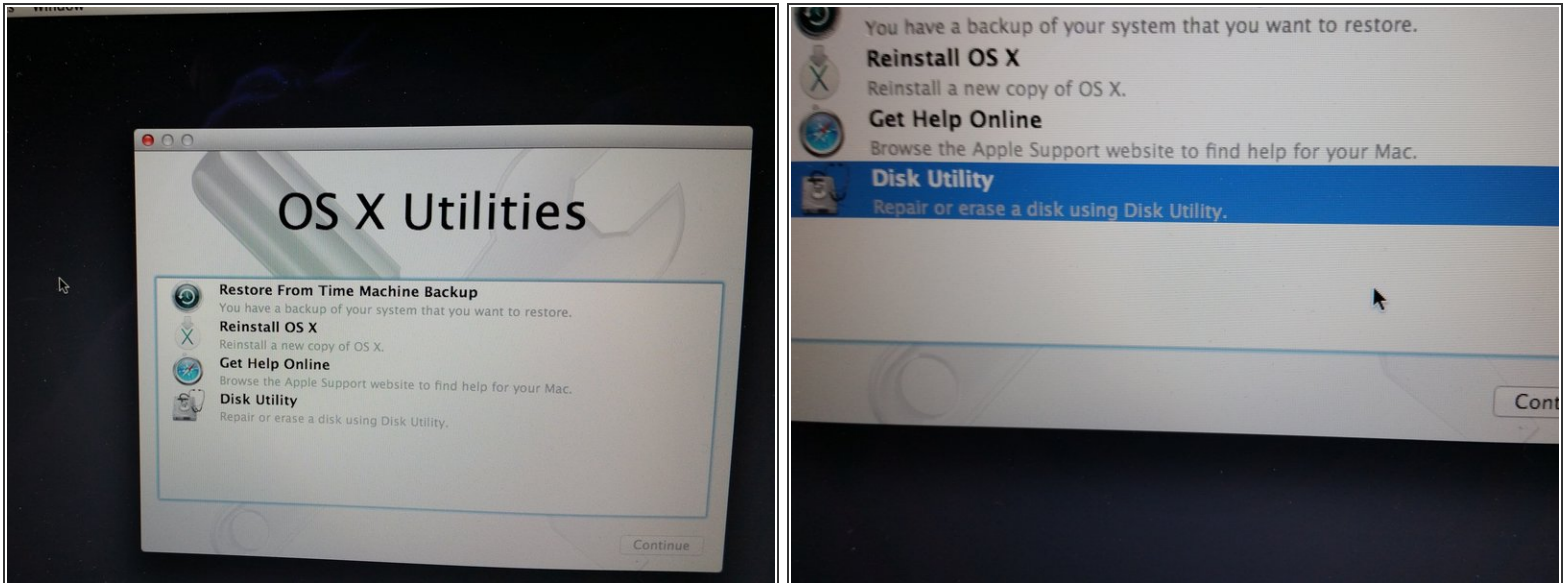


## Step 7



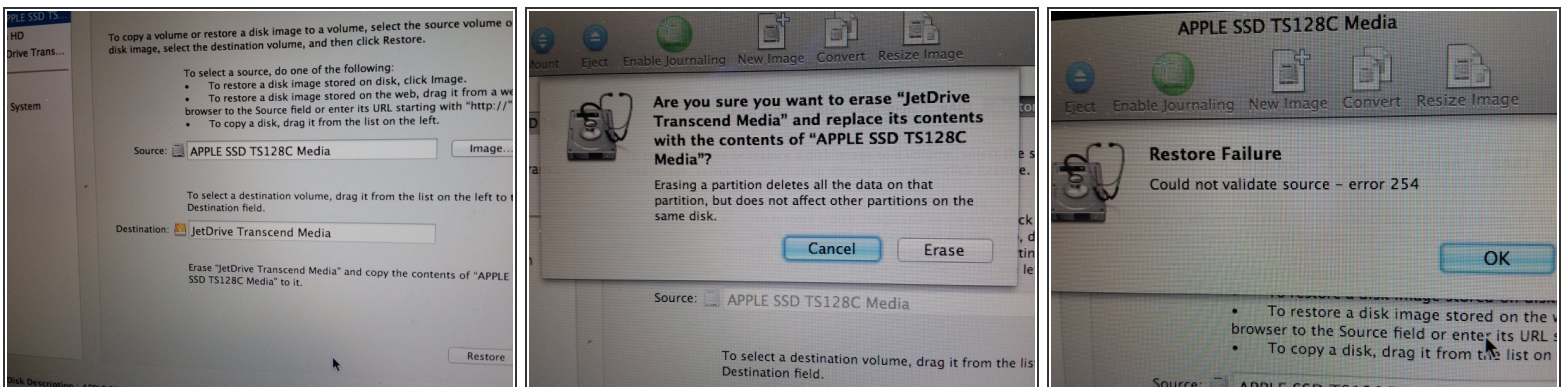
- Awkward option finger photo, in full effect.
- Hold the "Option" button down the entire time that the system is restarting and you will get to the boot options screen.
- Being someone more familiar with windows, here is the point where I start worrying about the ramifications of low level operations but, like, whatever, right?
- I chose the "Recovery" drive. With the amount of information provided, I figured it was pretty much a crap shoot. Two sentences of text would have probably made it crystal clear. I'm glad I made "The Right Choice (c) 2014."

## Step 8



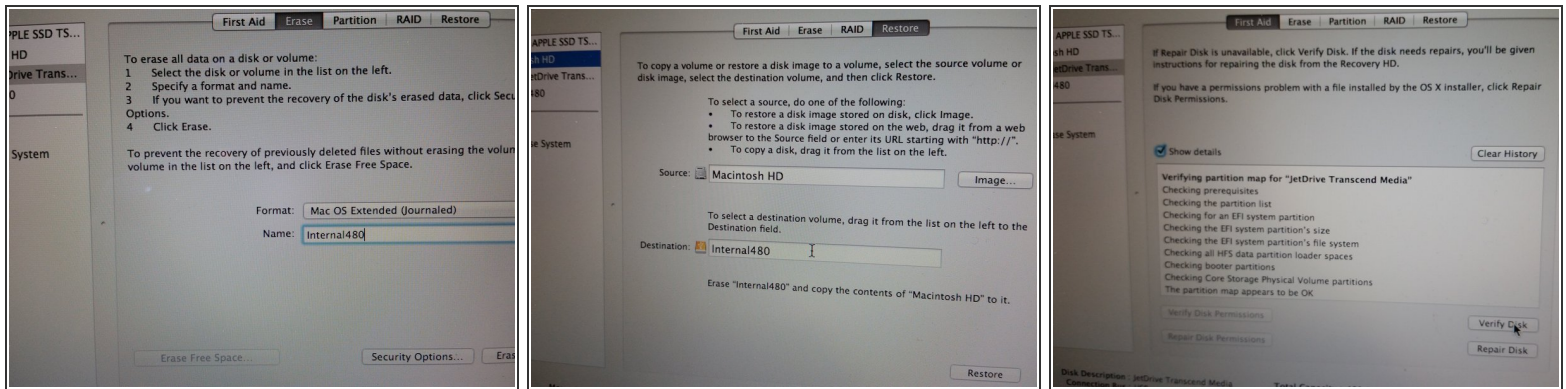
- This is what happened next. Disk Utility seemed like the most logical choice.

## Step 9



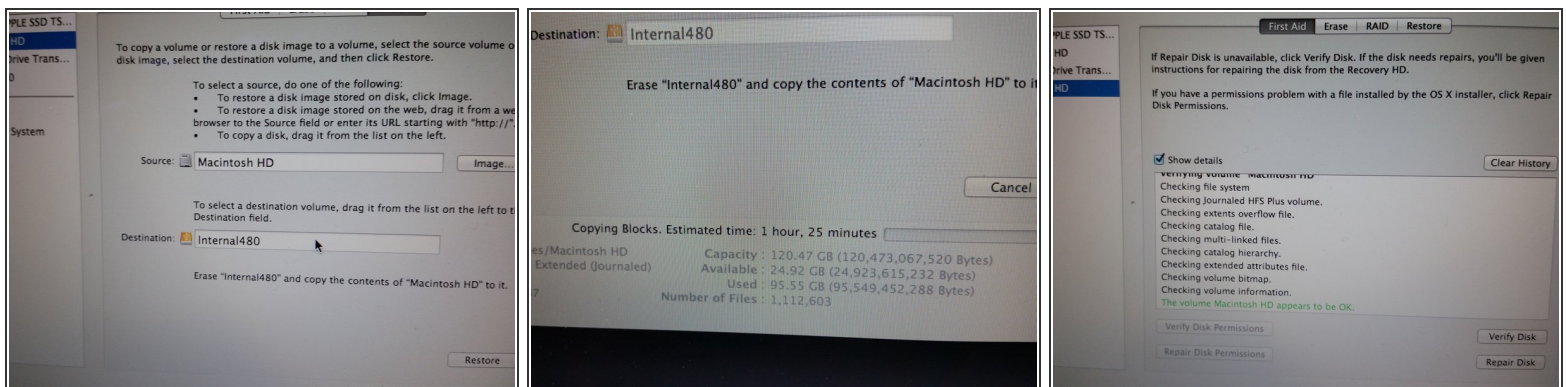
- So, now we're going to clone this drive. We enter a weird UX. Must click to fill in the source but have to drag to add the destination.
- Anyway, click the hardware old and drag the hardware new with great hope but in the interest of foreshadowing, I will let you know now that this will fail miserably.

## Step 10



- Let's erase it. (google translate: "format")
- And then, let's try and clone it. This time though, we're going to choose what I believe is called a volume, rather than a device. The device being the stick of ram we just installed and a volume as the collection of files and metadata stored on it.
- Chkdsk never hurt anyone. In Mac parlance, "Verify disk" under "First Aid"

## Step 11



- We have successfully reached the point where we can clone our volume.
- It's going to take awhile. This is the perfect time to do something else for at least two hours. I decided to go to sleep. YMMV.
- After the cloning process finished. I verified the disk and it reported that things were super-duper, you betcha.



## Step 12



- There are two long screws holding the back cover. Retain in your brain which ones they are.

## Step 13



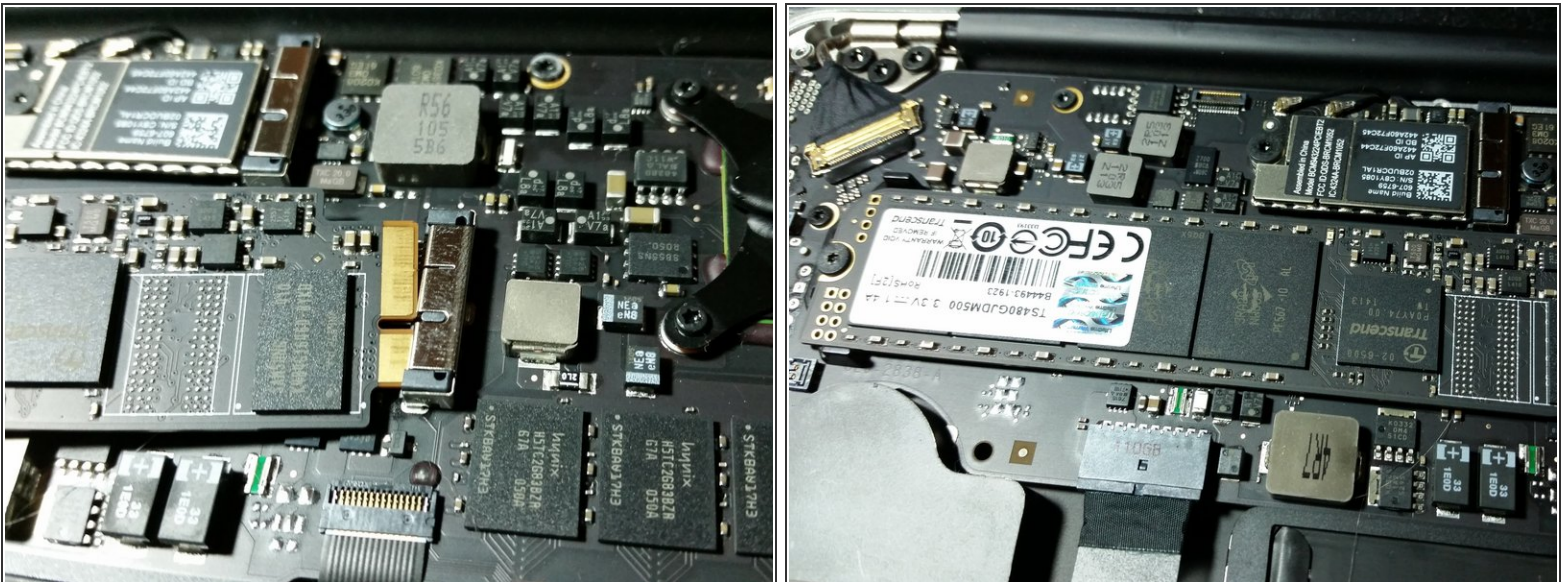
- A long screw and three short screws with a size comparison.

## Step 14



- A look at the internals. We are concerned with that orderly looking circuit board...held by a set screw.

## Step 15



- Put in your monacle and make sure you are respecting the gap when you introduce the new memory module.
- Replace the black set screw.

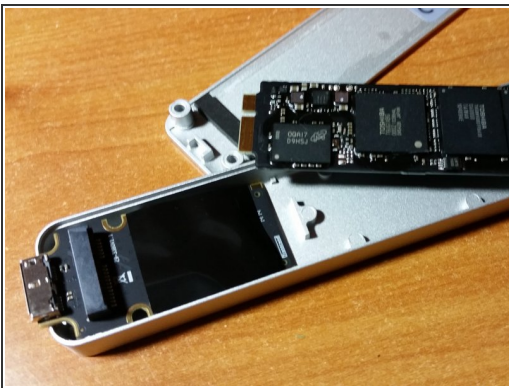


## Step 16



- Gently re-introduce the rear plate. Add a screw to each location. It is recommended to fasten each screw a bit at a time, so that each screw can best contribute to the case's tensor integrity.

## Step 17



- Let's put the old drive in this neat new case!
- The purpose was unclear for the black rubber piece with an adhesive backing. I attached it to the top of drive case. It seems to hold the memory stick snug in the case.

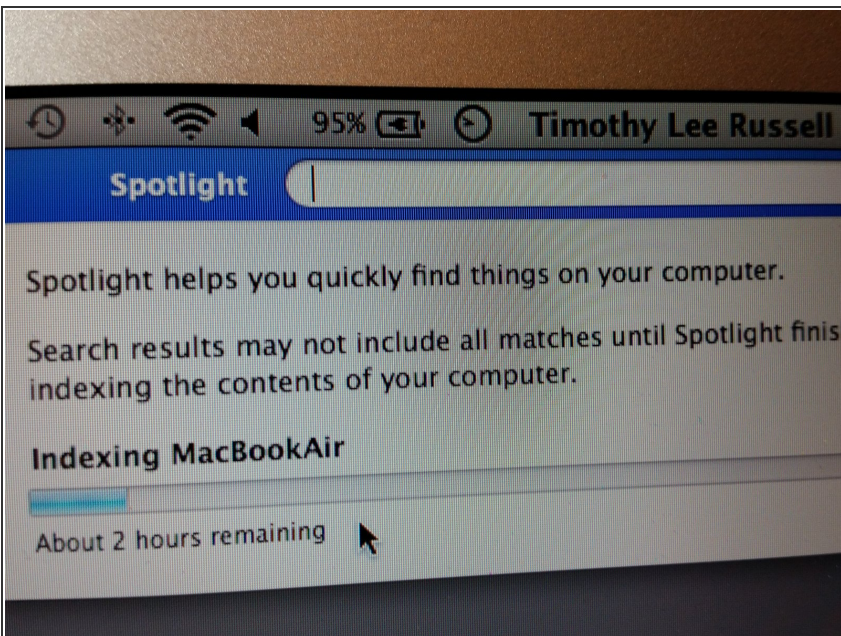


## Step 18



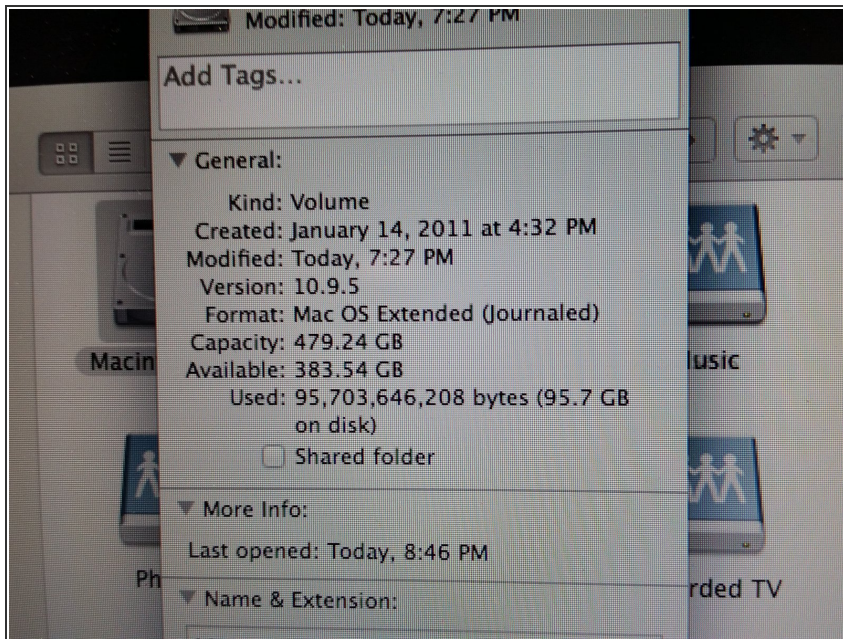
- I guess you could use the case to hold on to the screwdriver set. You know, for the apocalypse.

## Step 19



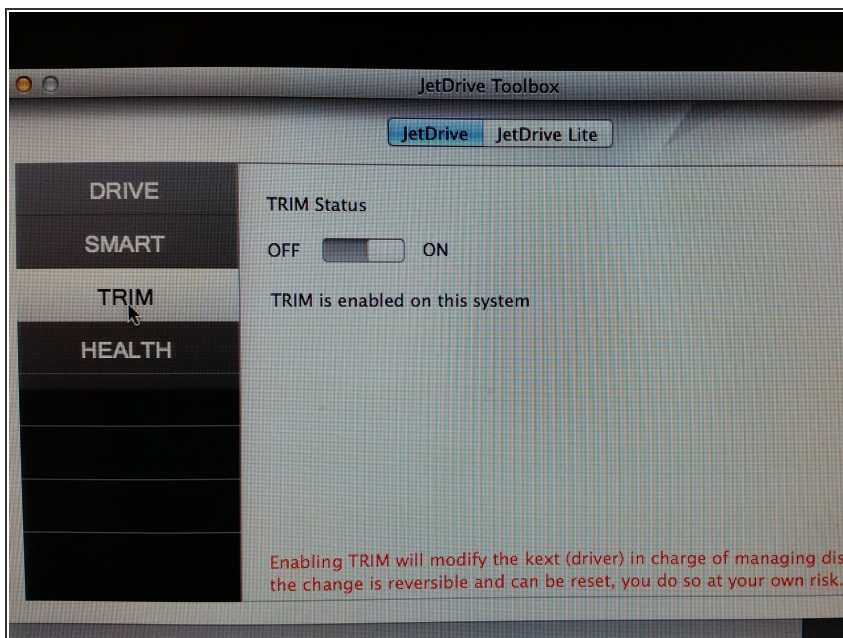
- For whatever reason, making a clone seems to wipe out the index so it's going to churn on Spotlight for awhile.

## Step 20



- At the end though, you're likely to have a bit more disk space. 383 GB, in my case.
- Good luck!

## Step 21



- Download the JetDrive Toolbox from Transcend's website.
- Install it and make sure you turn TRIM on. This will make your drive harder, better, faster, stronger.