



Written By: Andrew Bookholt



## INTRODUCTION

Use this guide to upgrade or replace the solid-state drive in a MacBook Air 13" Late 2010. This MacBook Air uses a [proprietary storage drive connector](#), and is therefore **not compatible** with common M.2 drives without the use of an adapter.

**Before you perform this repair**, if at all possible, [back up your existing SSD](#). Then, either familiarize yourself with [internet recovery](#) or [create a bootable external drive](#) so you'll be ready to install macOS onto your new drive and migrate your data to the new SSD.

Finally, we strongly recommend installing macOS 10.13 High Sierra (or a later macOS) before replacing the original SSD from your MacBook Air. Most new SSDs require updated storage drivers not found in versions of macOS prior to High Sierra.

[video: <http://www.youtube.com/watch?v=DLk1AJIzUEM>]



### TOOLS:

- [P5 Pentalobe Screwdriver Retina MacBook Pro and Air](#) (1)
- [T5 Torx Screwdriver](#) (1)



### PARTS:

- [Macbook Air 11" and 13" \(Late 2010/Mid 2011\) SSD](#) (1)
- [OWC Aura Pro SSD for Macbook Air 11" and 13" \(Late 2010-Mid 2011\)](#) (1)

## Step 1 — Lower Case



- i Before proceeding, close your computer and lay it on a soft surface top-side down.
- Remove the following ten screws:
  - Two 9 mm 5-point Pentalobe screws
  - Eight 2.6 mm 5-point Pentalobe screws
- i The special screwdriver needed to remove the eight 5-point Pentalobe screws can be found [here](#).

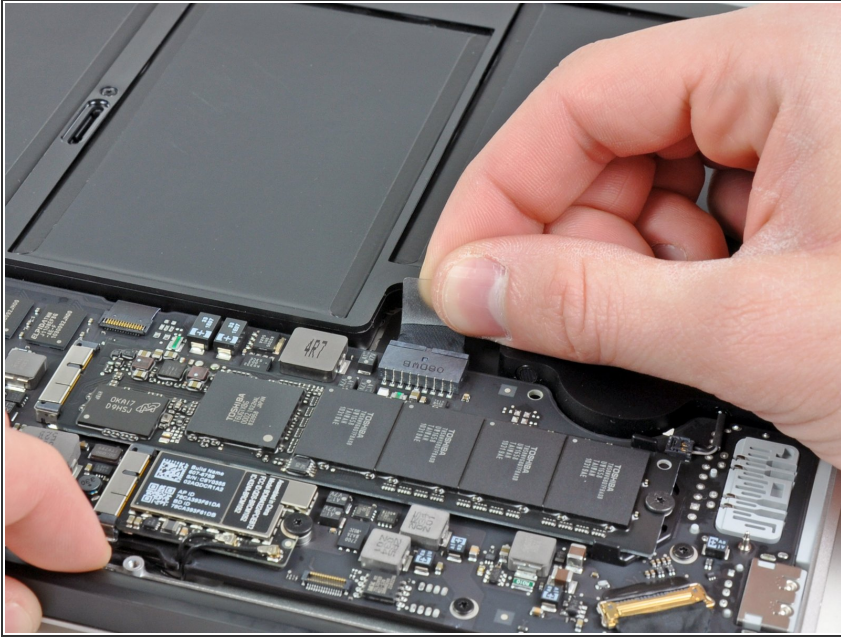
## Step 2



- Wedge your fingers between the display and the lower case and pull upward to pop the lower case off the Air.
- Remove the lower case and set it aside.



## Step 3 — Battery

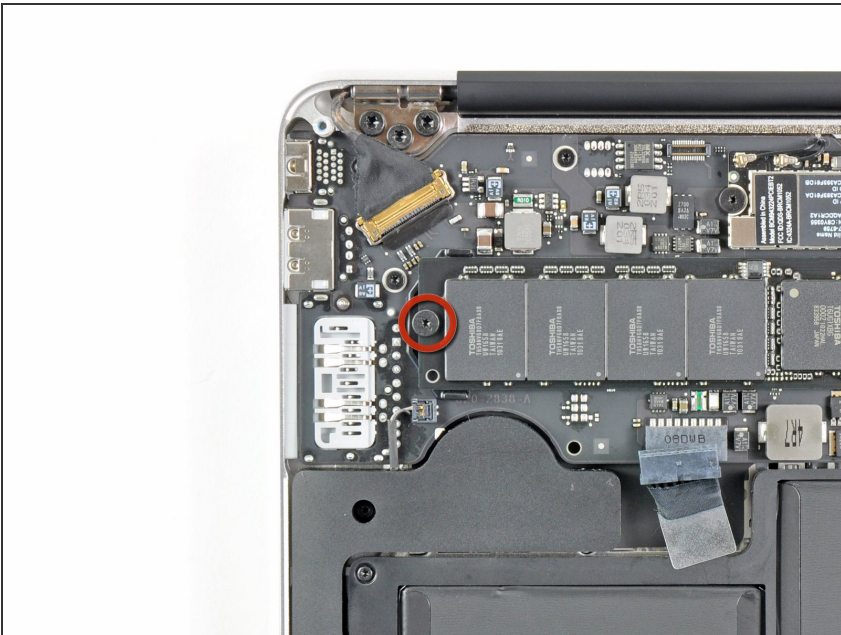


**i** For precautionary purposes, we advise that you disconnect the battery connector from the logic board to avoid any electrical discharge. This step is **optional** and is not required.

- Grab the clear plastic pull tab attached to the battery connector and pull it toward the front edge of the Air to disconnect the battery from the logic board.

**!** Do not lift upward on the connector as you disconnect it.



## Step 4 — Solid-State Drive



- Remove the single 2.9 mm T5 Torx screw securing the SSD to the logic board.

## Step 5



-  Do not lift the end of the SSD excessively.
- Slightly lift up the end of the SSD and pull it straight out of its socket on the logic board.
-  When reinstalling the SSD, be sure it is properly seated before reinstalling its retaining screw.

To reassemble your device, follow these instructions in reverse order.