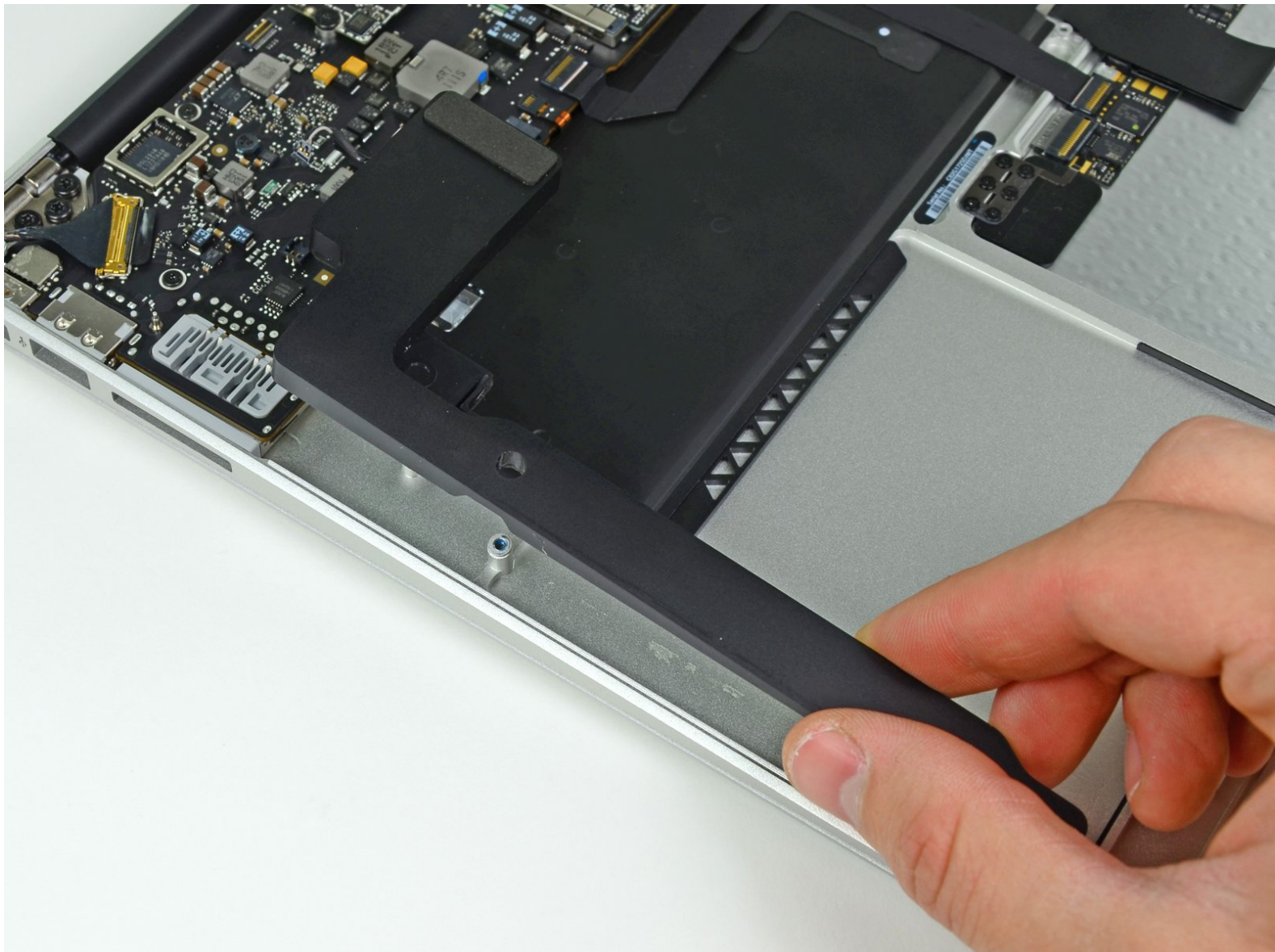




# MacBook Air 13" Mid 2011 Right Speaker Replacement

Replace a blown right speaker on your MacBook Air 13" Mid 2011.

Written By: Andrew Bookholt



# INTRODUCTION

Right side of your Air mute these days? Use this guide to replace a blown right speaker.



## TOOLS:

- [P5 Pentalobe Screwdriver Retina MacBook Pro and Air](#) (1)
- [Spudger](#) (1)
- [T5 Torx Screwdriver](#) (1)



## PARTS:

- [MacBook Air 13" \(Mid 2011\) Right Speaker](#) (1)

## Step 1 — Lower Case



- i Before proceeding, power down your MacBook. Close the display and lay it on a soft surface, top-side down.
- Use a [P5 Pentalobe](#) driver to remove ten screws securing the lower case, of the following lengths:
  - Two 9 mm screws
  - Eight 2.6 mm screws

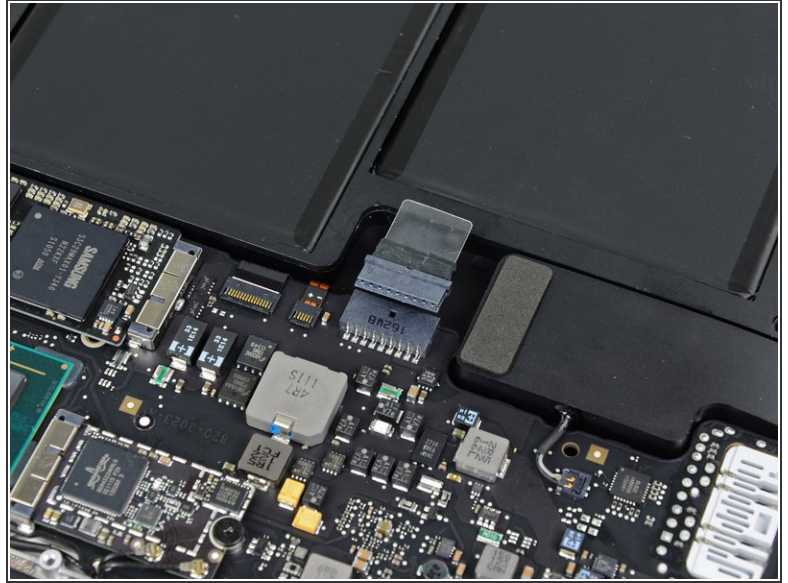
## Step 2



- Wedge your fingers between the display and the lower case and pull upward to pop the lower case off the Air.
- Remove the lower case and set it aside.



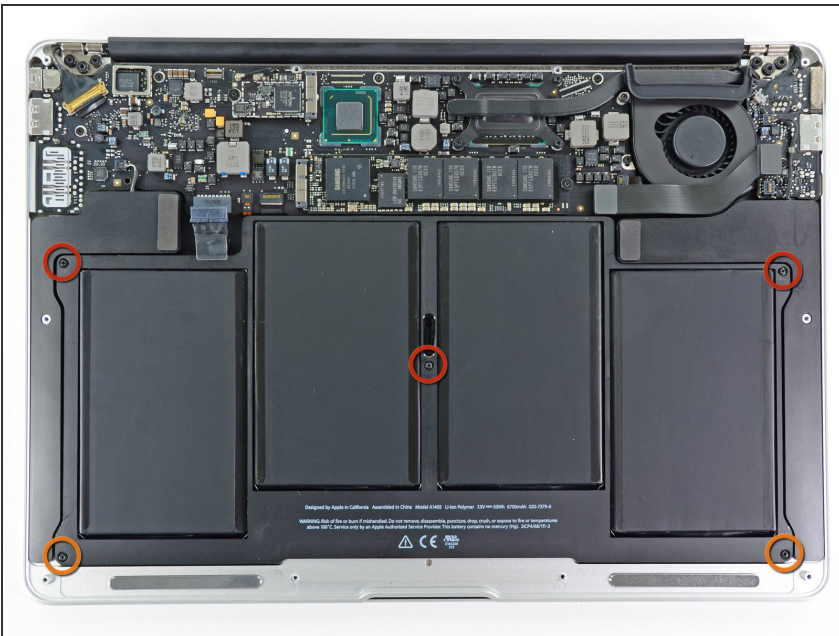
## Step 3 — Battery



- Grab the clear plastic pull tab attached to the battery connector and pull it toward the front edge of the Air to disconnect the battery from the logic board.

⚠ Do not lift upward on the connector as you disconnect it.

## Step 4



- Remove the following five screws securing the battery to the upper case:
  - Three 6.3 mm T5 Torx screws
  - Two 2.4 mm T5 Torx screws

## Step 5



- ⚠ When handling the battery, avoid squeezing or touching the four exposed lithium polymer cells.
- Lift the battery from its edge nearest the logic board and remove it from the upper case.
- ★ When installing the new battery, if there is a [thin plastic film](#) on your replacement battery, do not attempt to remove it. It is glued on and protects the battery pack while it is inside the MacBook.
- ★ If you're installing a new battery, you should [calibrate](#) it after installation:
  - Charge it to 100%, and then keep charging it for at least 2 more hours. Then, unplug and use it normally to drain the battery. When you see the low battery warning, save your work, and keep your laptop on until it goes to sleep due to low battery. Wait at least 5 hours, then charge your laptop uninterrupted to 100%.
  - If you notice any unusual behavior or problems after installing your new battery, you may need to [reset your MacBook's SMC](#).



## Step 6 — Right Speaker



- Use the flat end of a spudger to pry the right speaker connector up and out of its socket on the logic board.
- ⓘ Pry up from beneath the wires.

## Step 7



- Use the flat end of a spudger to pry the right speaker off the adhesive securing it to the upper case.
- Remove the right speaker from the upper case.