



MacBook Air 13" Mid 2012 AirPort/Bluetooth Card Replacement

Replace the AirPort/Bluetooth card in your MacBook Air 13" Mid 2012.

Written By: Andrew Optimus Goldheart



INTRODUCTION

Use this guide to replace a broken AirPort/Bluetooth card to get back your wireless.



TOOLS:

- [P5 Pentalobe Screwdriver Retina MacBook Pro and Air](#) (1)
- [Spudger](#) (1)
- [T5 Torx Screwdriver](#) (1)



PARTS:

- [MacBook Air \(Late 2010/Mid 2011/Mid 2012\) AirPort/Bluetooth Board](#) (1)

Step 1 — Lower Case



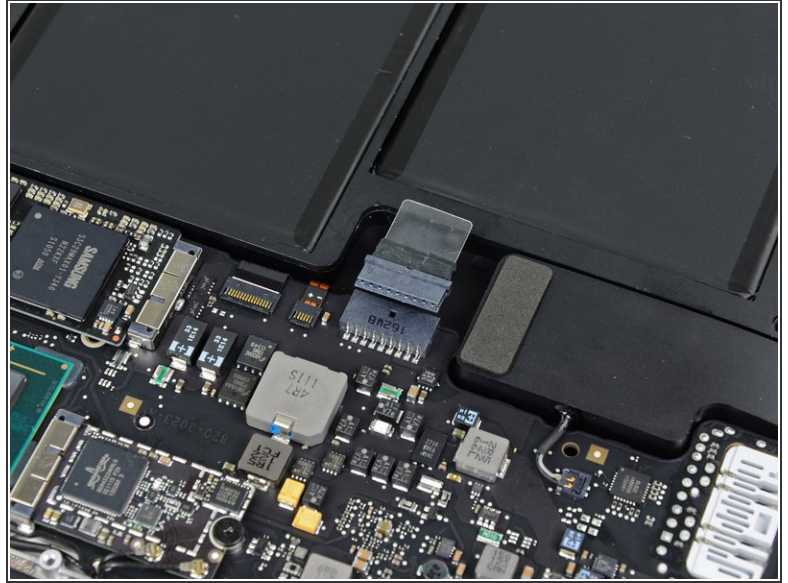
- ❗ Before proceeding, power down your MacBook. Close the display and lay it on a soft surface, top-side down.
- Use a [P5 Pentalobe](#) driver to remove ten screws securing the lower case, of the following lengths:
 - Two 9 mm screws
 - Eight 2.6 mm screws



Step 2



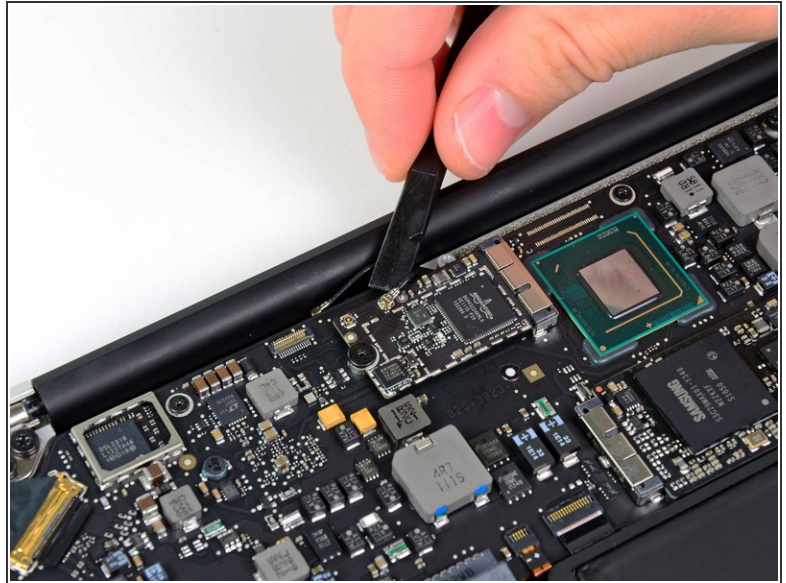
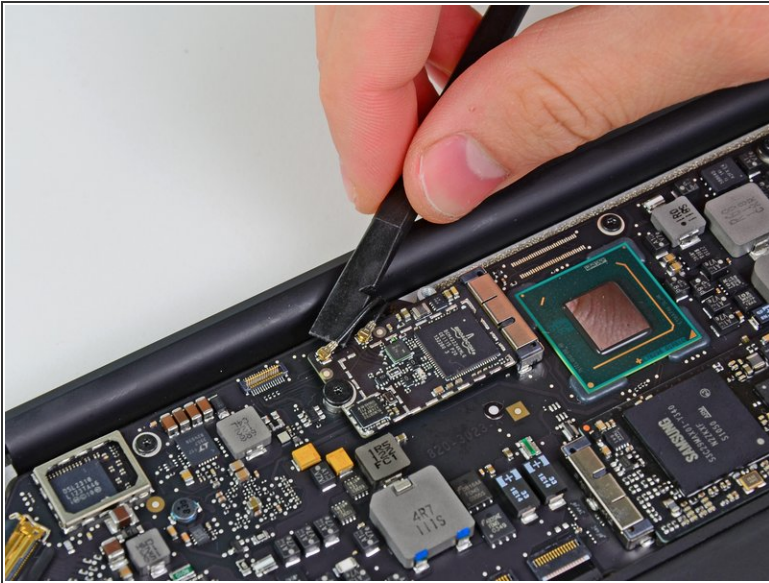
- Wedge your fingers between the display and the lower case and pull upward to pop the lower case off the Air.
- Remove the lower case and set it aside.

Step 3 — Battery Connector



-  As a precaution against accidental discharge or shock, disconnect the battery connector from the logic board.
- Grab the clear plastic pull tab attached to the battery connector and pull it toward the front edge of the Air to disconnect the battery from the logic board.
-  Be sure to pull the connector horizontally toward the battery, and not straight up from the Air, or you may damage the socket on the logic board.

Step 4 — AirPort/Bluetooth Card



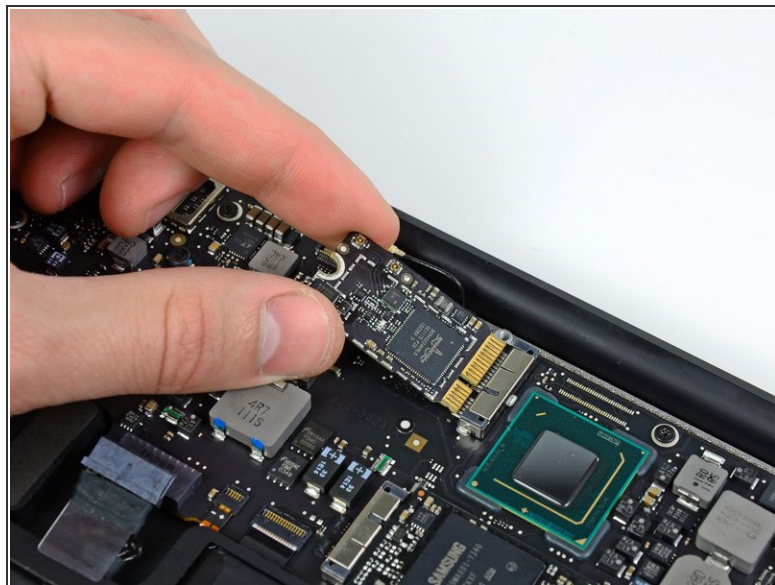
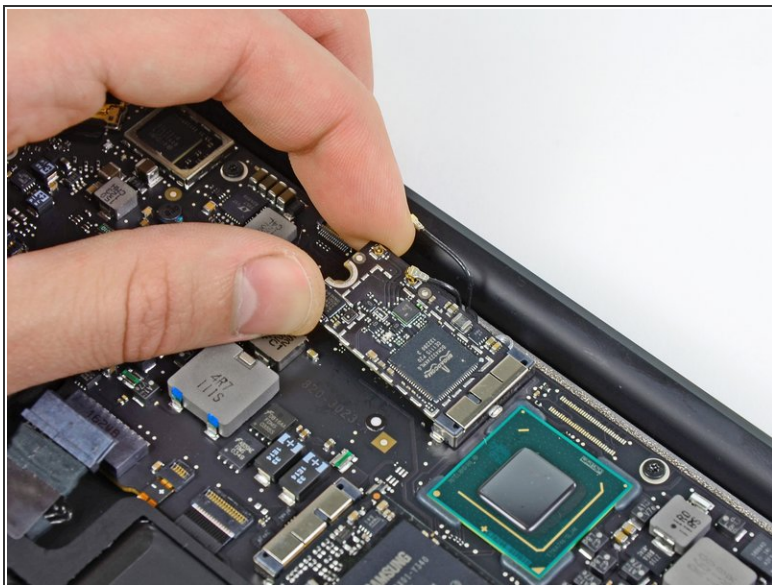
- Use the flat end of a spudger to pry both antenna connectors up from their sockets on the AirPort/Bluetooth card.

Step 5



- Remove the single 2.9 mm T5 Torx screw securing the AirPort/Bluetooth card to the logic board.

Step 6



- Slightly lift the free end of the AirPort/Bluetooth card and pull it out of its socket on the logic board.
- ⚠ To avoid damaging its socket on the logic board, do not excessively lift the free end of the AirPort/Bluetooth card.
- Remove the AirPort/Bluetooth card from the Air.

To reassemble your device, follow these instructions in reverse order.