



MacBook Air Models A1237 and A1304 Port Hatch Assembly Replacement

Written By: Walter Galan



INTRODUCTION

Replace your port hatch assembly to fix issues with the headphone jack and/or the USB/Micro-DVI ports.



TOOLS:

- [Phillips #00 Screwdriver](#) (1)
- [Spudger](#) (1)




PARTS:

- [MacBook Air \(Original\) Port Hatch Assembly](#) (1)
- [MacBook Air \(Late 2008 Mid 2009\) Port Hatch Assembly](#) (1)

Step 1 — Lower Case



 Unplug your MacBook Air and power it off before you proceed.

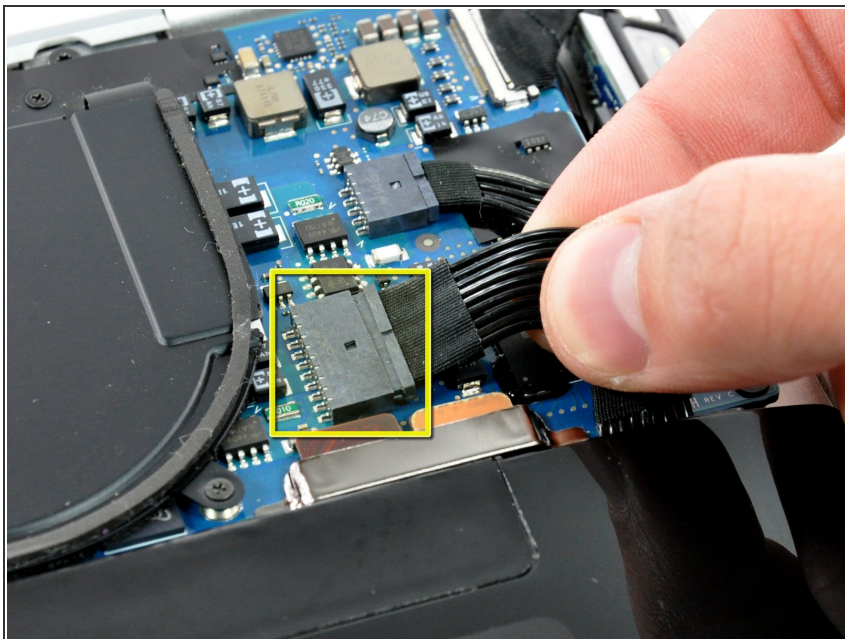
- Remove ten Phillips screws securing the lower case to the MacBook Air:
 - Six 2.8 mm screws
 - Two 3.8 mm screws
 - Two 5.4 mm screws

Step 2



- Slightly lift the lower case near the vents and push it toward the rear of the computer to free the mounting tabs.

Step 3 — Battery



- Disconnect the battery connector by pulling it straight out of its socket.

Step 4



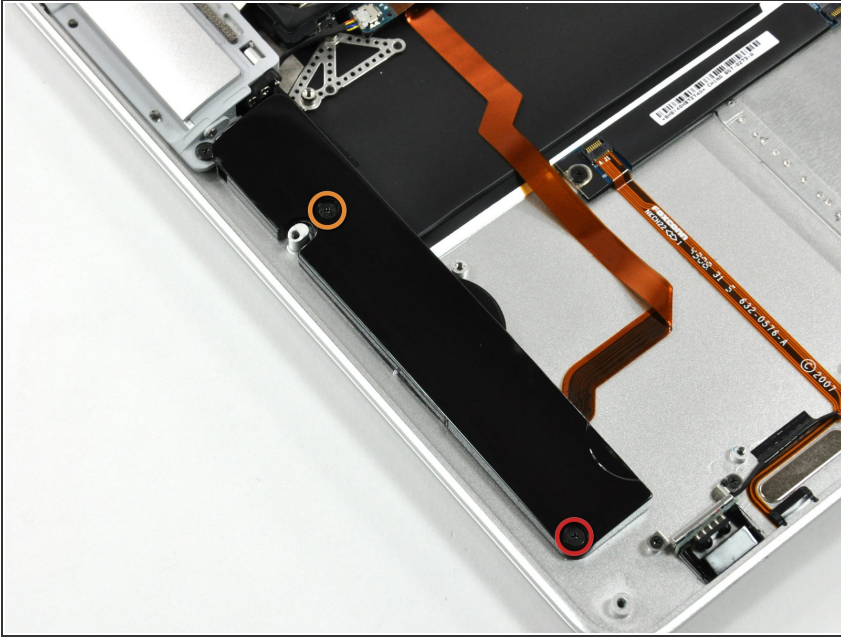
- Remove the following nine screws securing the battery to the Air:
 - Four 2.9 mm Phillips.
 - Four 3.8 mm Phillips.
 - One 7.2 mm Phillips.

Step 5



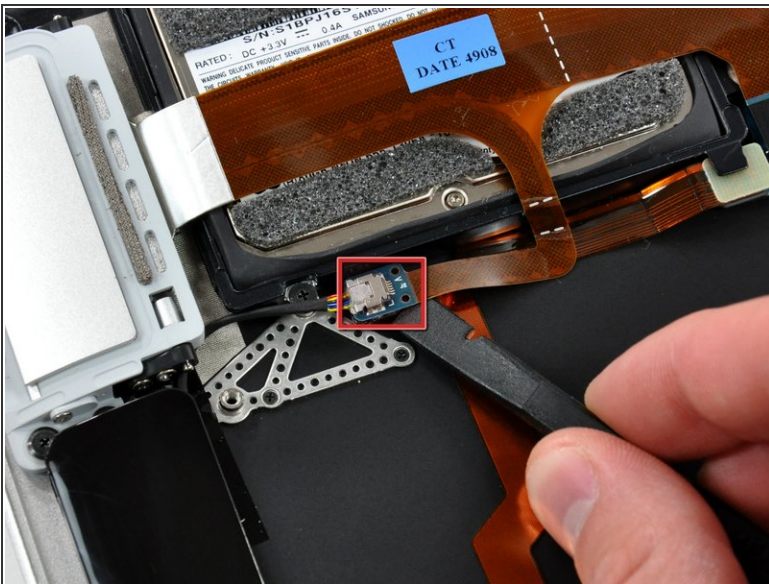
- Lift the battery out of the Air.
- ☑ If you're installing a new battery, you should [calibrate](#) it after installation:
 - Charge it to 100%, and then keep charging it for at least 2 more hours. Then, unplug and use it normally to drain the battery. When you see the low battery warning, save your work, and keep your laptop on until it goes to sleep due to low battery. Wait at least 5 hours, then charge your laptop uninterrupted to 100%.
 - If you notice any unusual behavior or problems after installing your new battery, you may need to [reset your MacBook's SMC](#).

Step 6 — Speaker



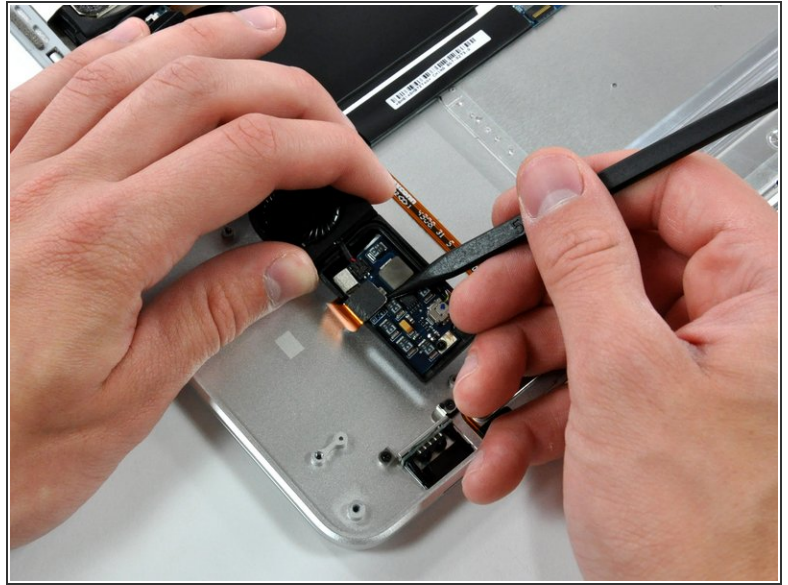
- Remove the following two screws securing the speaker assembly to the upper case.
 - One 3 mm Phillips.
 - One 5.8 mm Phillips.

Step 7



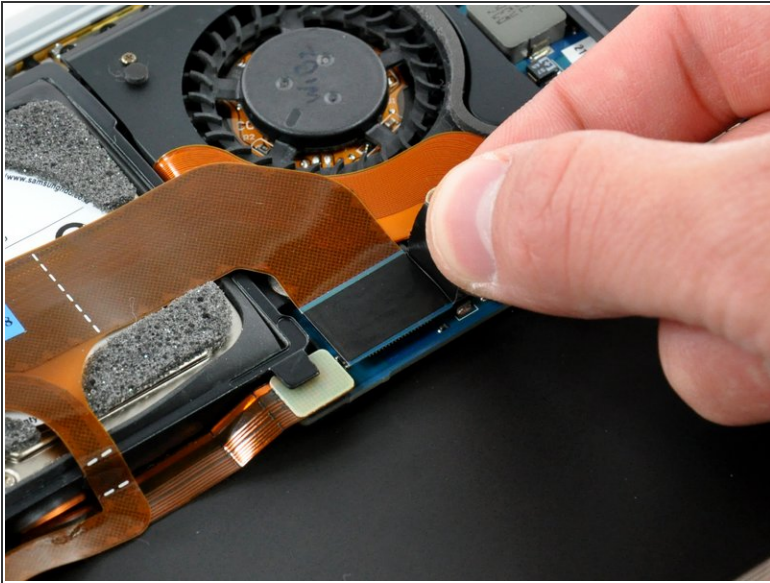
- Use a spudger to lift the audio-out connector board off the adhesive that secures it to the hard drive bracket.
- Disconnect the audio out connector from its socket.

Step 8



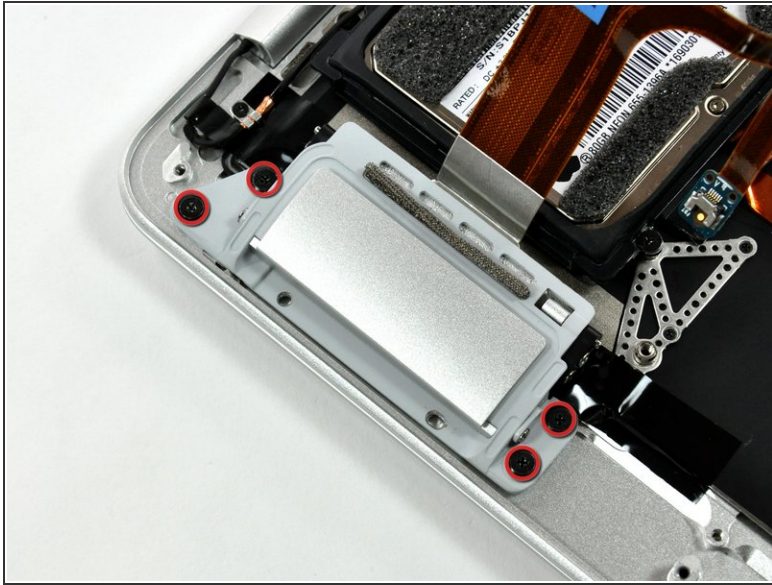
- Rotate the speaker assembly toward the center of the Air.
- Use a spudger to pry the speaker cable connector up off the audio board.

Step 9 — Port Hatch Assembly



- Disconnect the port hatch ribbon cable from the logic board by pulling it straight up by its black pull tab.
- If necessary, pull the audio out ribbon cable off the adhesive securing it to the upper case.

Step 10



- Remove the four 3.2 mm Phillips screws securing the port hatch assembly to the upper case.
- Lift the port hatch assembly out of the upper case.

To reassemble your device, follow these instructions in reverse order.