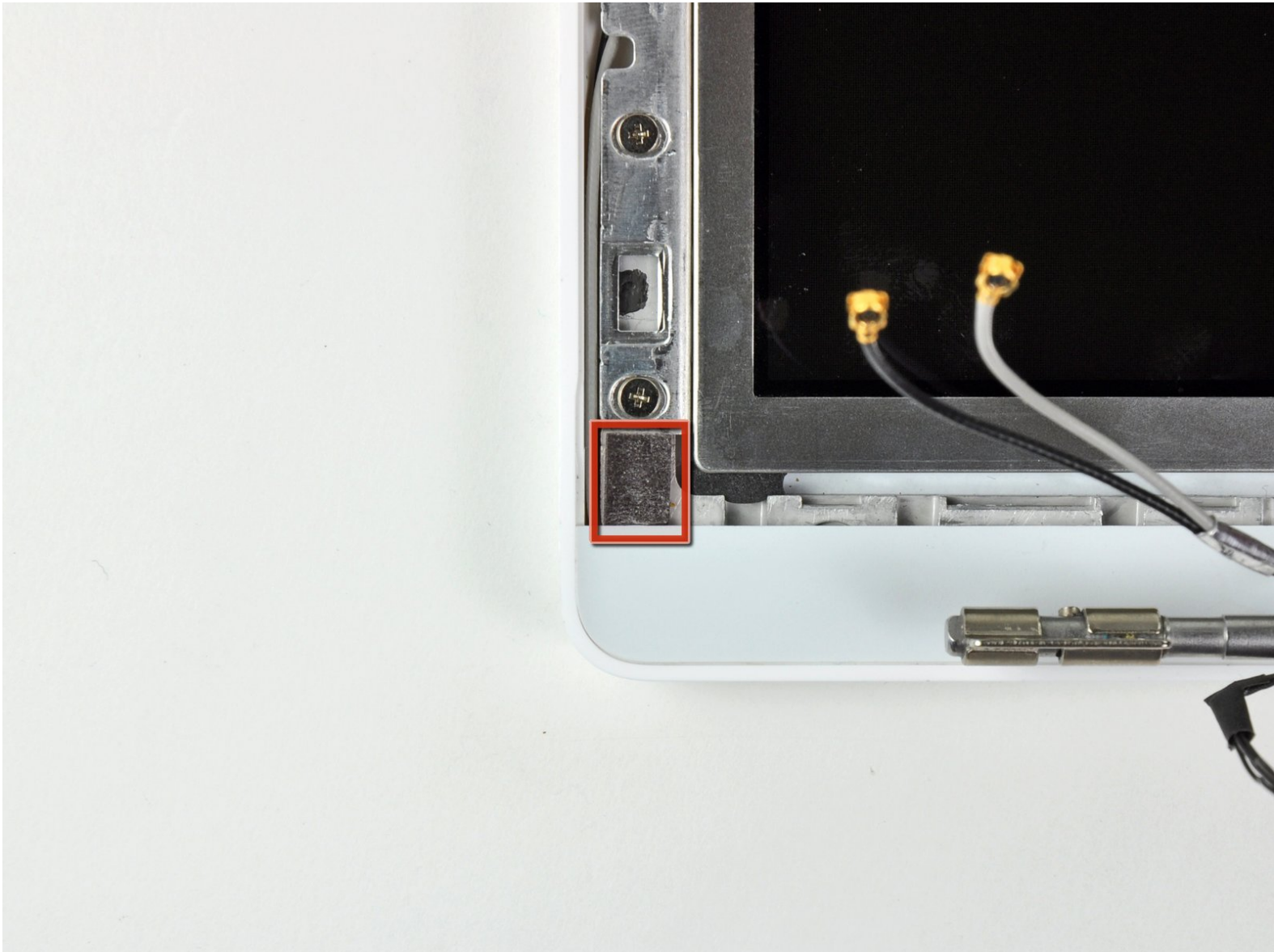




# MacBook Core Duo LCD Assembly Replacement

Internal Prerequisite.

Written By: Andrew Bookholt



---

# INTRODUCTION

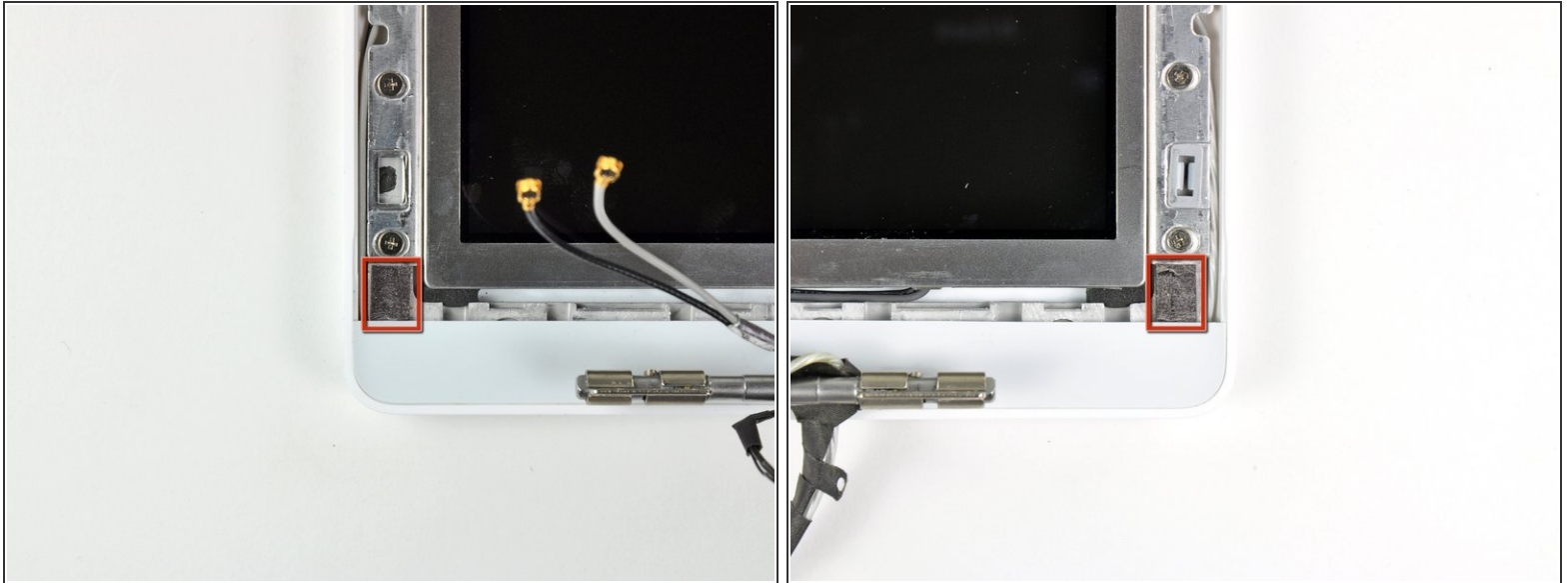
Internal Prerequisite.



## TOOLS:

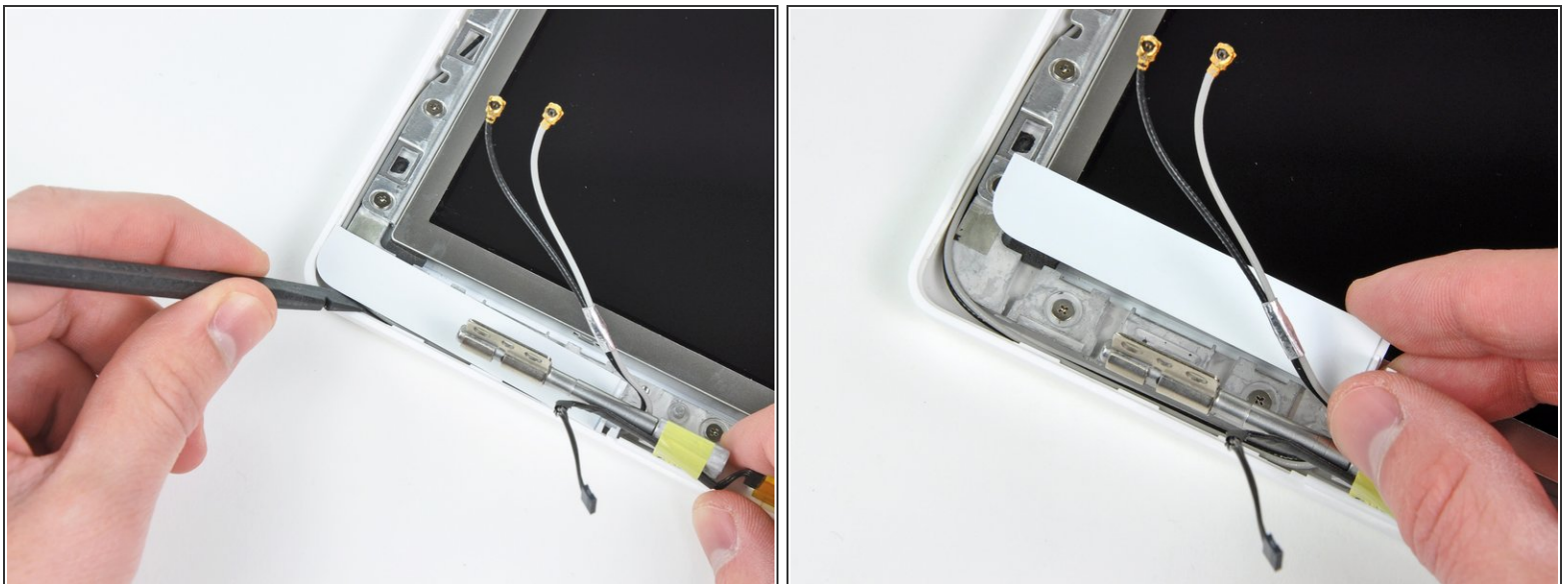
- [Phillips #00 Screwdriver](#) (1)
  - [Spudger](#) (1)
-

## Step 1 — LCD Assembly



- Remove the small piece of foam tape stuck down above each of the bezel covers.

## Step 2



- Use a spudger to slide the left bezel cover towards the LCD panel.
  - ⚠ Do not lift up vertically on the cover! Unlike the large display bezel, this one has horizontal hooks to keep it in place. These will break easily.
- Lift the left bezel cover off the display assembly.

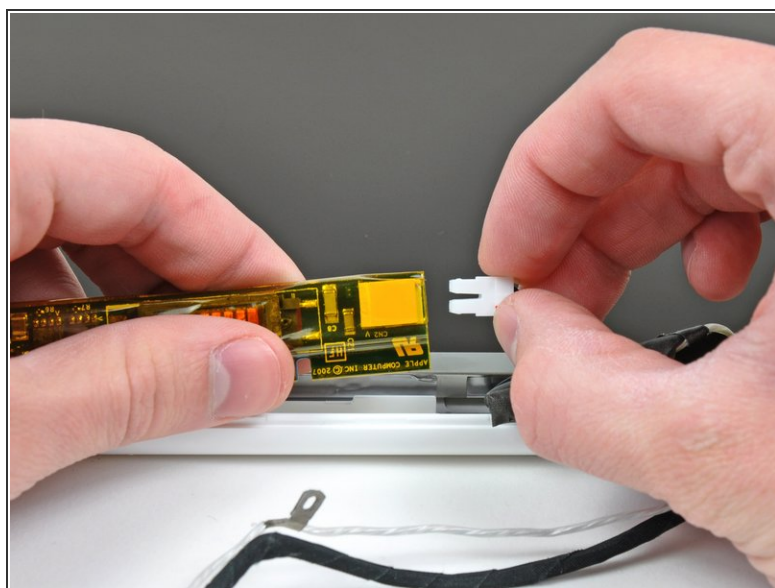
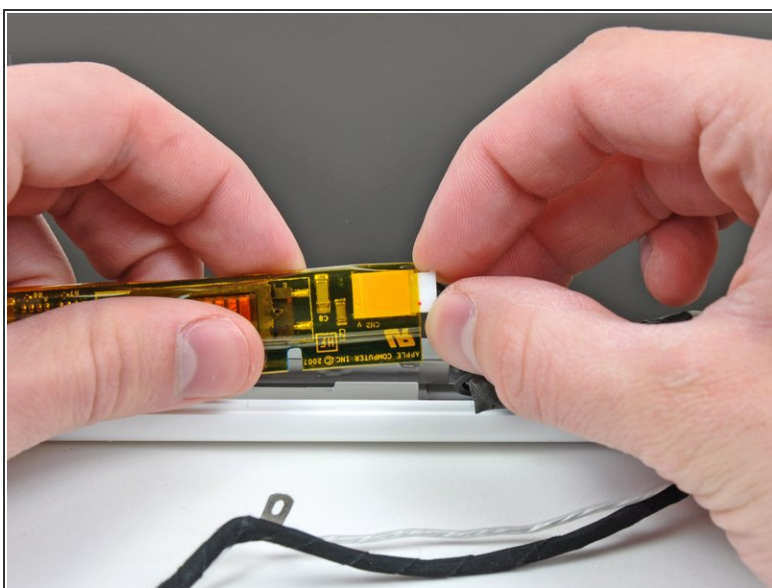


### Step 3



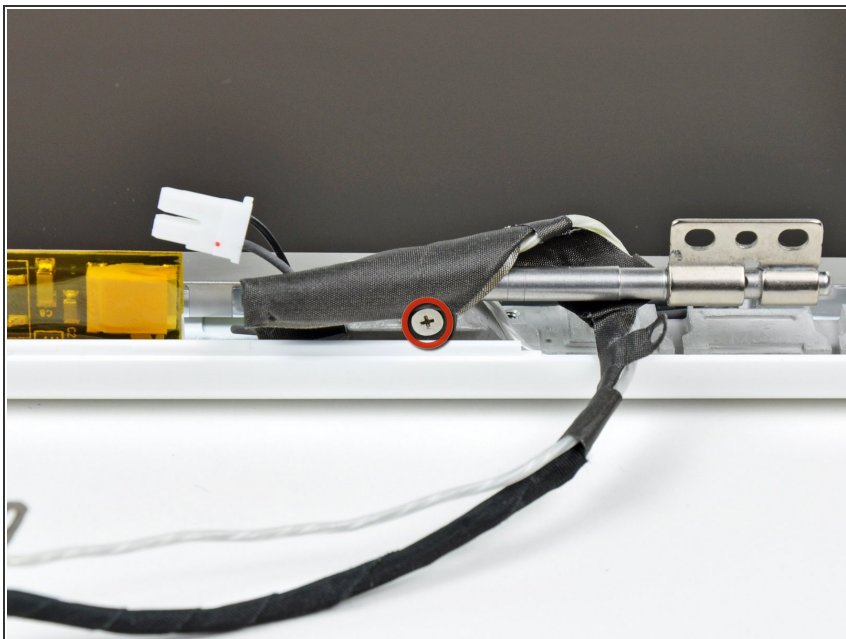
- Use a spudger to slide the right bezel cover toward the LCD panel.
- Lift the right bezel cover off the display assembly.

### Step 4



- Lift the inverter out of the display slightly and disconnect the backlight cable from its right side.
- Place the inverter back down in its recess.

## Step 5



- Remove the single 3.2 mm Phillips screw securing the display data cable to the right clutch hinge.

## Step 6



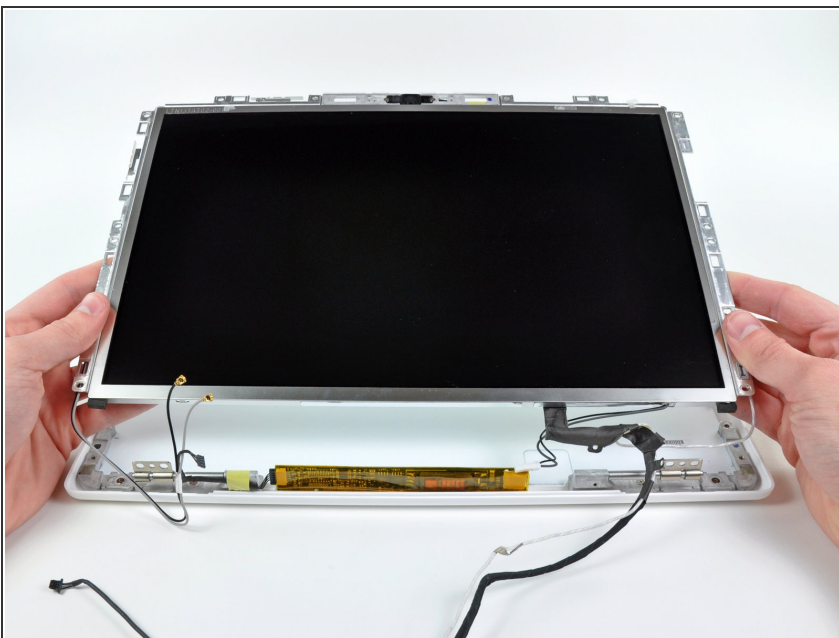
- Move the display data cable out from under the mounting arm of the right clutch hinge.

## Step 7



- Remove the twelve 4.2 mm Phillips screws securing the LCD assembly to the rear display bezel.
- ⓘ Make sure you pay attention to how the microphone cable (and antenna cable on some models) are routed around the outside of the two screws nearest to the bottom of the screen (on both left and right). It's easy to damage the cables if not routed properly when putting these screws back on.

## Step 8



- Lift the LCD assembly out of the rear display bezel, minding any cables that may get caught.



## Step 9



- ★ Be sure to keep track of the small magnet along the left side of the display. It may be stuck to the LCD frames or to the rear display bezel. When installing it, be sure short side is facing upward.

To reassemble your device, follow these instructions in reverse order.