



# MacBook Pro 13" Function Keys 2017 Screen Assembly Replacement

Remove and replace a damaged display assembly.

Written By: bbuscher





## TOOLS:

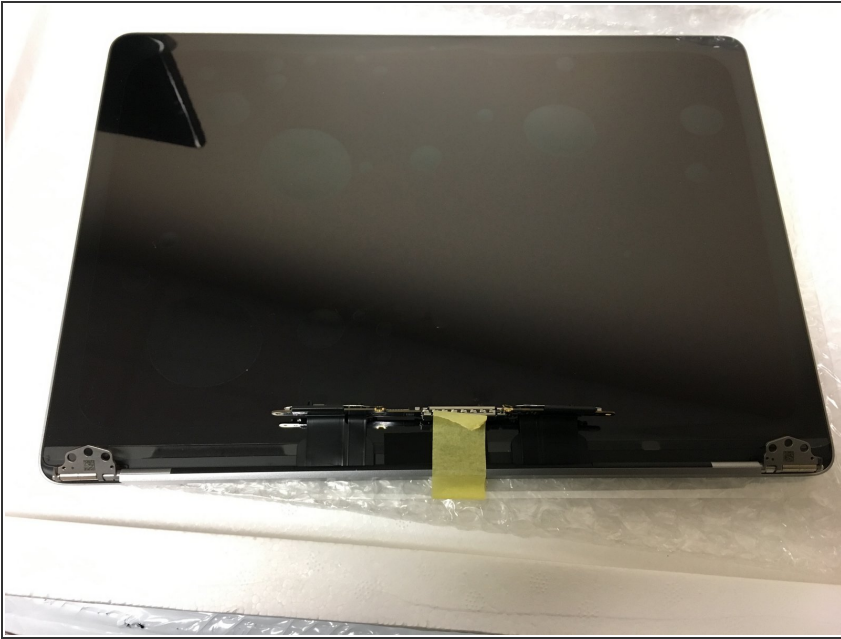
- [64 Bit Driver Kit](#) (1)  
*P2, P5, T3, T4, T8*



## PARTS:

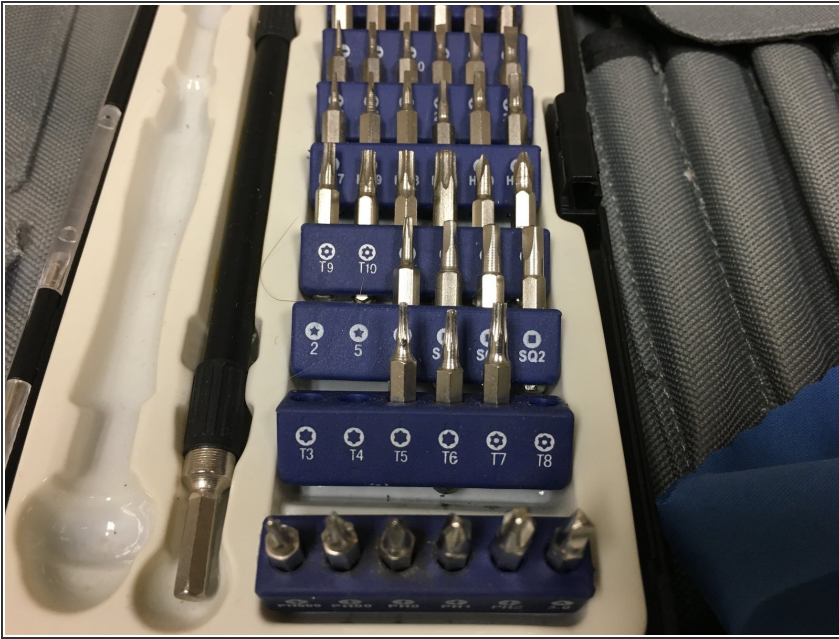
- [MacBook Pro 13" Retina \(Late 2016-2017\) Display Assembly](#) (1)

## Step 1 — Screen Assembly



- The screen assembly I am using in this tutorial arrived encased in foam, bubble wrap and styrofoam. Quite a pleasure to unpack.

## Step 2



- With the size of some of the screws I found it a bit of a challenge to determine the screw head size. I hope the pictures help. This pic shows that I use P2,P3,T3,T4 and T8 bits.

## Step 3



- Start with removing the 4 corner screws and the two center screws from around the bottom panel.  
\*\*NOTE the screws next to the hinge are a different length (longer) than the two at the other two corners, and the two center screws are the shortest. so keep that in mind when putting your MacBook back together.



## Step 4



- There are a few clips holding the bottom in place so after removing the screws I used a suction cup and pulled the back off. This took a but more force than seems good but I found it safer than using a slugger around the edges.

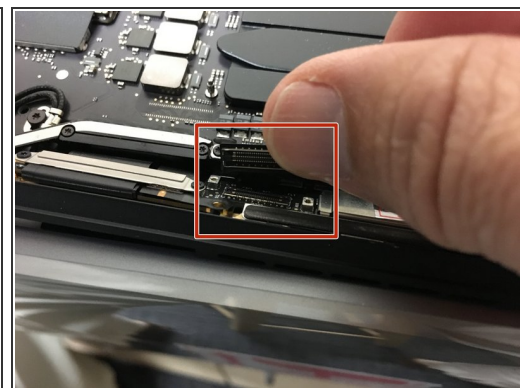
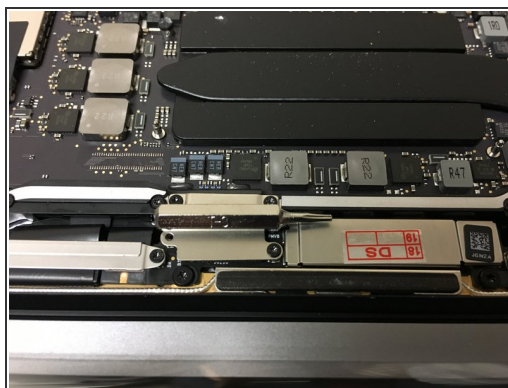
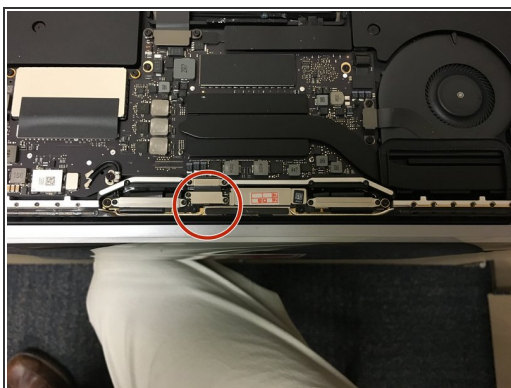
## Step 5



 Disconnect the battery before proceeding.

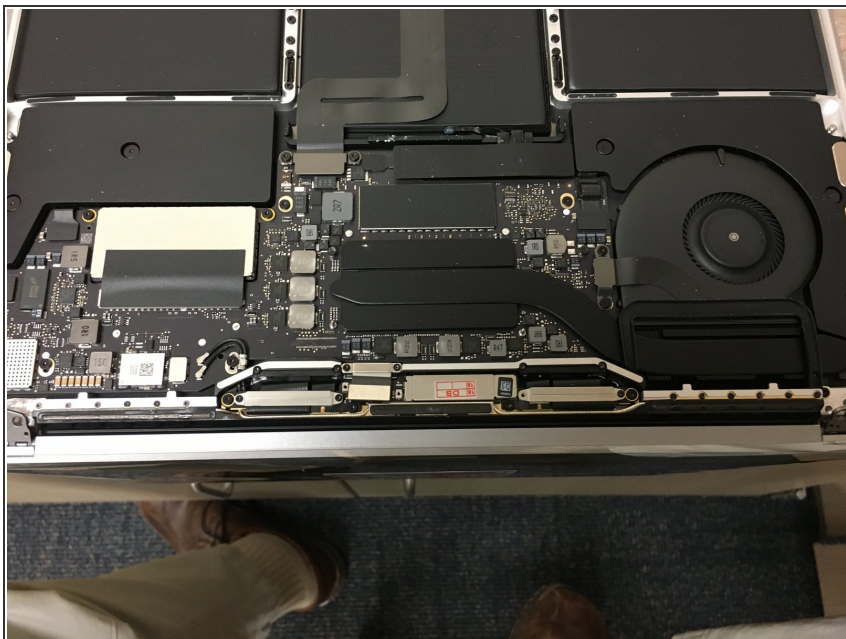
- Now comes the hinge screws. Actually, for the next few steps it probably does not matter what order you remove the screws. But I did the hinges next. These require a T8 driver.
- I forgot to get a picture of the hinge caps that will need to be removed first. These required a P3 driver, and the screws are very tiny. Once these screws were removed you can pry off the hinge caps and access the hinges.

## Step 6



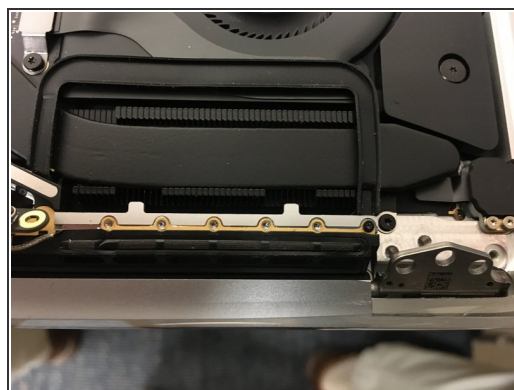
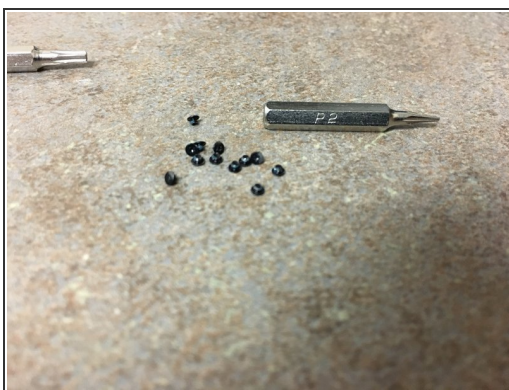
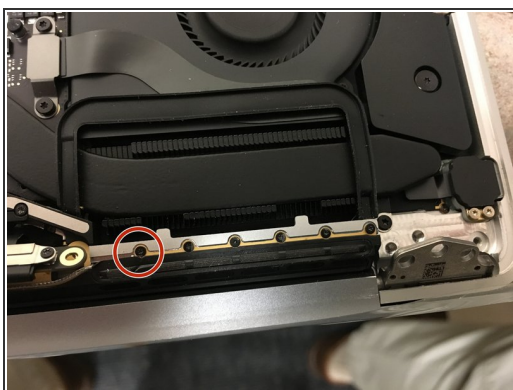
- Remove the video cable cover. and using a plastic splugger disconnect the video cable.

## Step 7



- Insert wisdom here.

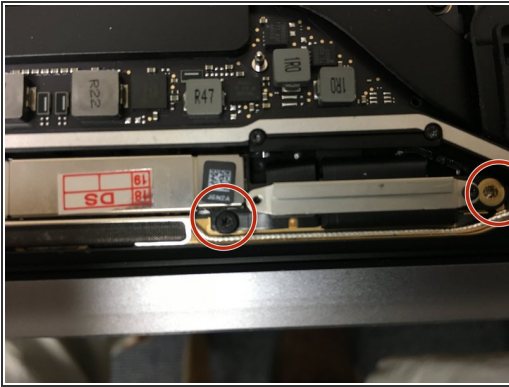
## Step 8



- OK doing good so far? Here is a fun step. Using the P2 remove all the little screws on both sides as highlighted in the picture.

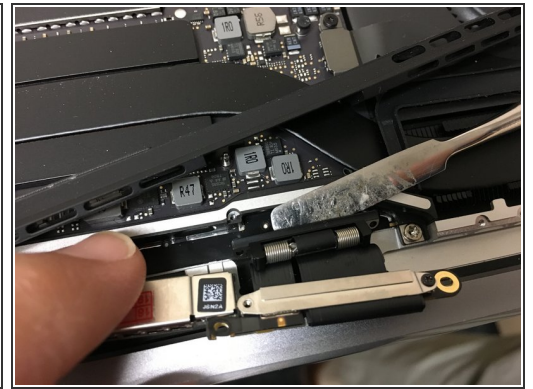
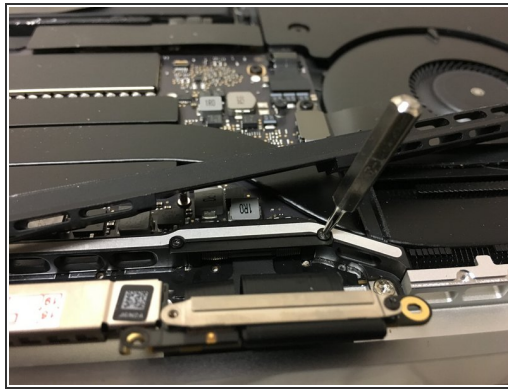
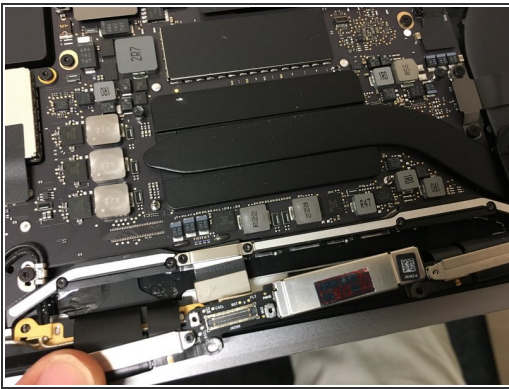


## Step 9



- Remove these screws next and note the screws on the outside (right in this picture) are a little longer than the center screws. There are two sets of these on either side of center. Use a Torx 5 driver

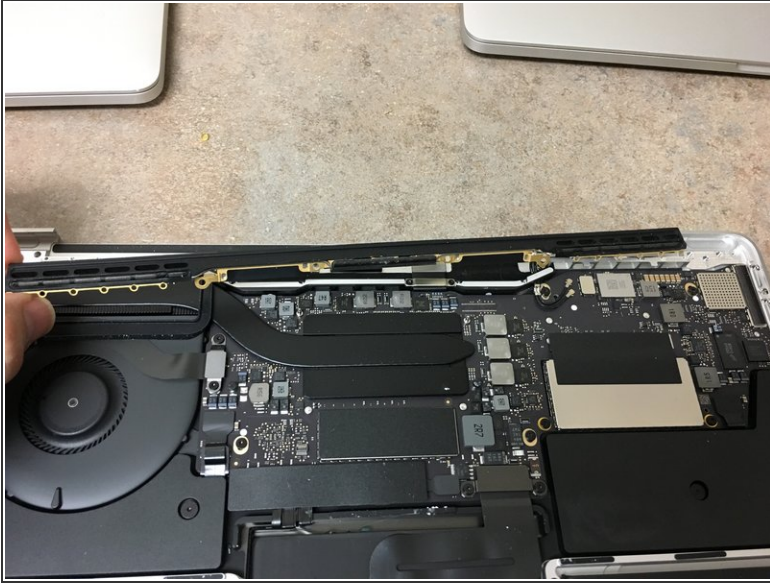
## Step 10



- OK, under the wider cables we detached there are two cables (one left and one right) that have hinges on them. Those now also need to be detached.



## Step 11



- Time to wiggle all the cables out from under the vent bar we detached (the one with all the tiny screws).
- Once this is done you can remove the screen assembly from the bottom kit.

## Step 12



- And there it is. Not too bad. Total repair time for me was about 10-15 minutes. But then I have a hard time with the tiny screws.
- Just reverse the steps and you should be good to go.

To reassemble your device, follow these instructions in reverse order.