



MacBook Pro 13" Retina Display Early 2015 Upper Case Replacement

Replace the Upper Case in your MacBook Pro 13" Retina Display Early 2015.

Written By: Andrew Optimus Goldheart



INTRODUCTION

Use this guide to replace the upper case. This procedure involves using adhesive remover to remove the battery. **Do not reuse the battery after it has been removed, as doing so is a potential safety hazard.** Replace it with a new battery.

iFixit adhesive remover is highly flammable. Perform this procedure in a well-ventilated area. Do not smoke or work near an open flame during this procedure.

To minimize risk of damage, turn on your MacBook and allow the battery to fully discharge before starting this procedure. A charged lithium-ion battery can create a dangerous and uncontrollable fire if accidentally punctured. If your battery is swollen, [take extra precautions](#).

Some replacement upper case assemblies may include the trackpad and battery as well. In this case, skip steps 18 through 44.

This guide requires the removal of the heat sink. Don't forget to follow our [thermal paste application guide](#) before you reinstall your heat sink.



TOOLS:

- [Arctic Silver ArctiClean](#) (1)
- [Arctic Silver Thermal Paste](#) (1)
- [iOpener](#) (1)
- [P5 Pentalobe Screwdriver Retina MacBook Pro and Air](#) (1)
- [Plastic Cards](#) (1)
- [iFixit Opening Tools](#) (1)
- [Spudger](#) (1)
- [T3 Torx Screwdriver](#) (1)
- [T5 Torx Screwdriver](#) (1)
- [T8 Torx Screwdriver](#) (1)
- [Tweezers](#) (1)



PARTS:

- [MacBook Pro 13" Retina \(Early 2015\) Battery](#) (1)
- [MacBook Pro 13" Retina \(Early 2015\) Upper Case Assembly](#) (1)

Step 1 — Lower Case



- Remove the following ten screws securing the lower case to the upper case:
 - Two 2.3 mm Pentalobe screws
 - Eight 3.0 mm Pentalobe screws
- ☑ Throughout this repair, [keep track of each screw](#) and make sure it goes back exactly where it came from to avoid damaging your device.

Step 2



- Wedge your fingers between the upper case and the lower case.
- Gently pull the lower case away from the upper case to remove it.

Step 3



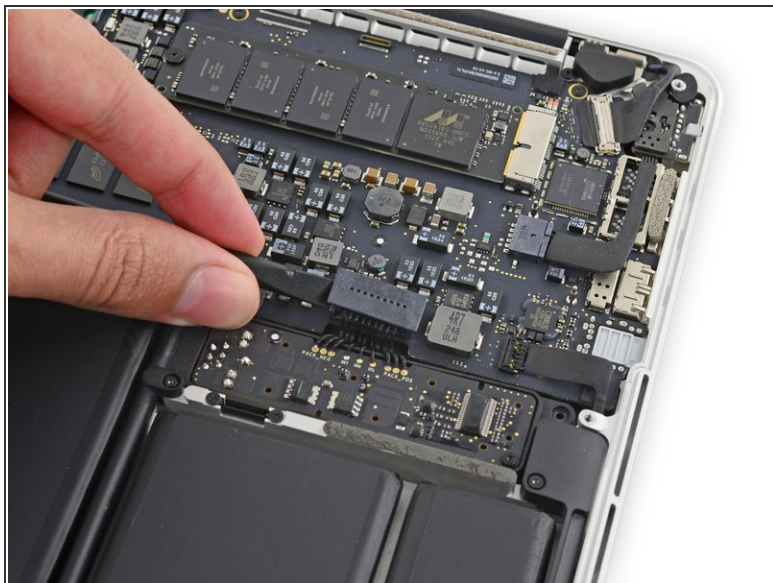
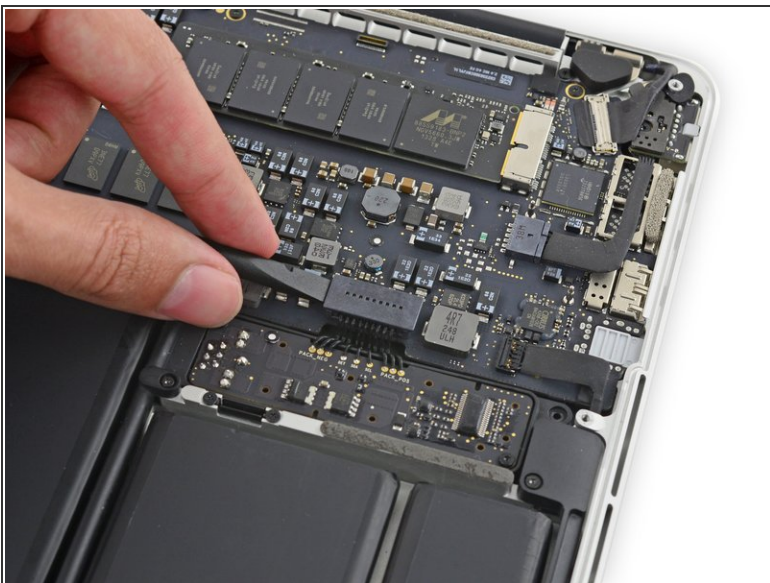
-  The lower case is connected to the upper case with two plastic clips near its center.
-  During reassembly, gently push down the center of the lower case to reattach the two plastic clips.

Step 4 — Battery Connector



-  If necessary, remove the plastic cover adhered to the battery contact board.

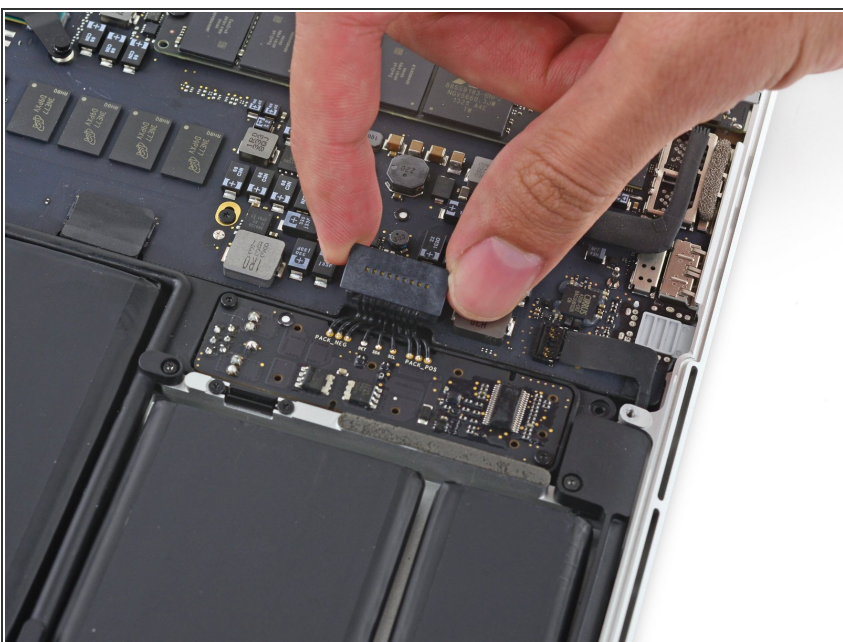
Step 5



- Use the flat end of a spudger to lift the battery connector straight up out of its socket on the logic board.

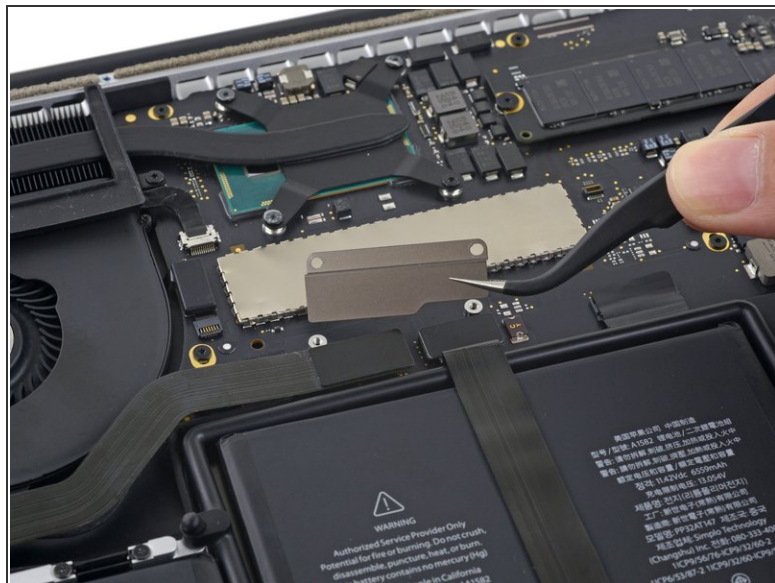
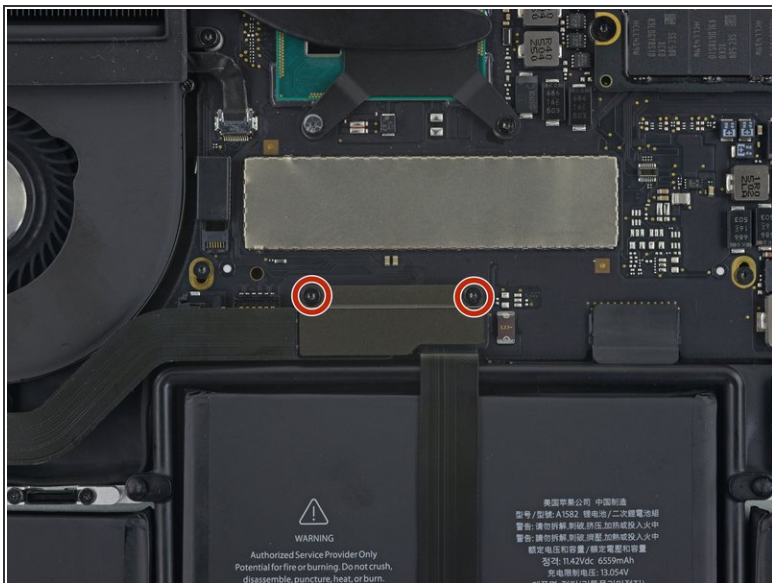
⚠ Be sure you lift up only on the connector itself, **not** the socket, or you risk permanent damage to the logic board.

Step 6



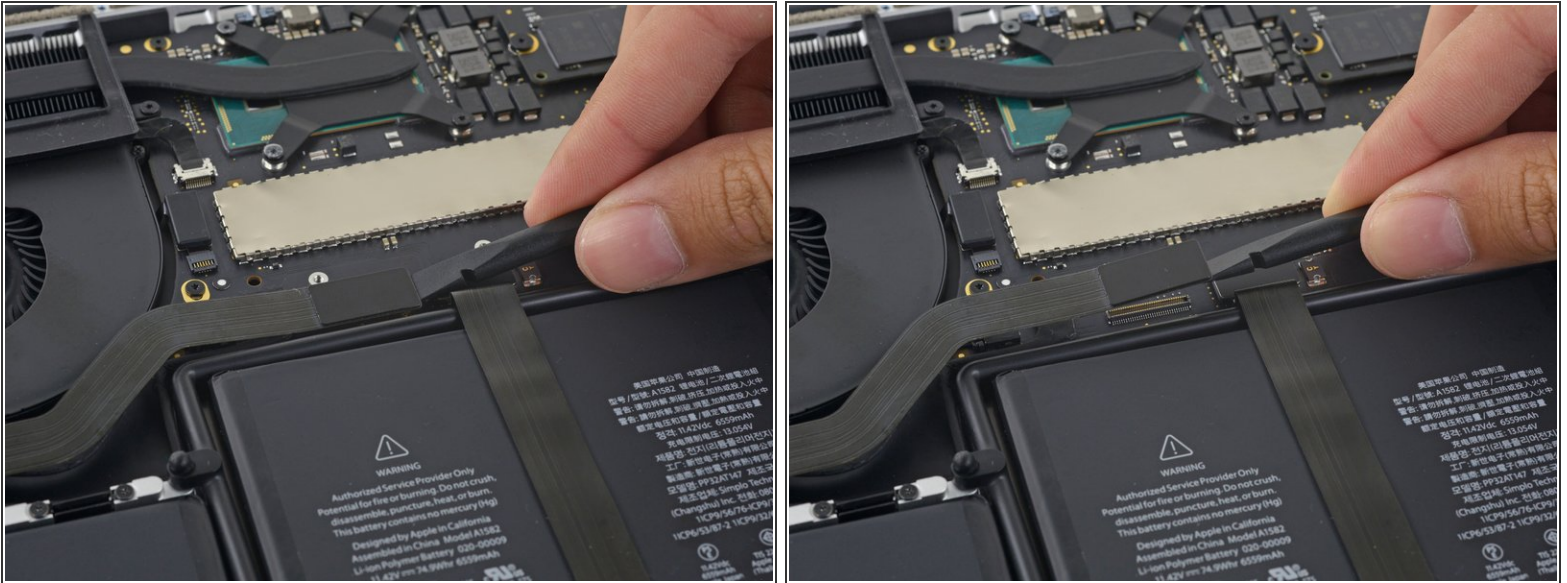
- ☑ Bend the battery connector up out of the way to prevent accidental contact with its socket during your repair.

Step 7 — Right Speaker



- Remove the two 2.1 mm T5 Torx screws securing the logic board end of the I/O board cable bracket.
- Remove the I/O board cable bracket.

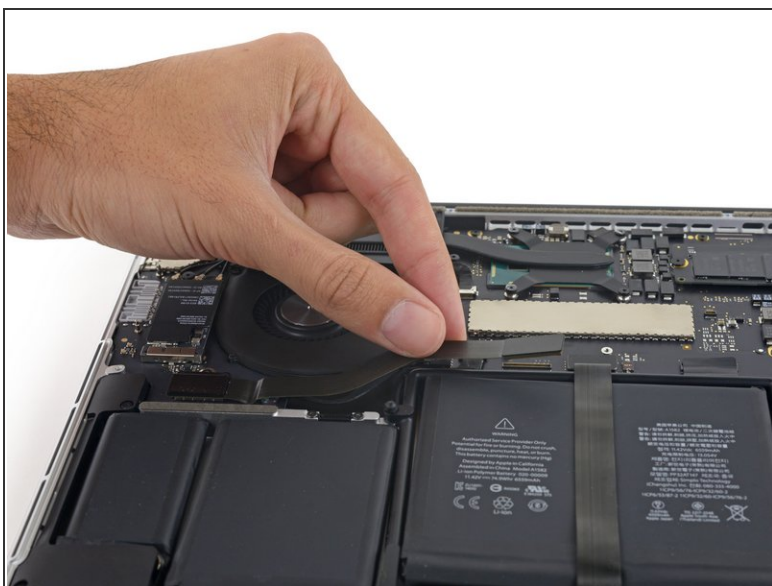
Step 8



- Use the flat end of a spudger to pop the I/O board connector straight up off its socket on the logic board.

⚠ Be careful to only pry up on the I/O board cable, **not** on the socket itself or you risk damaging your logic board.

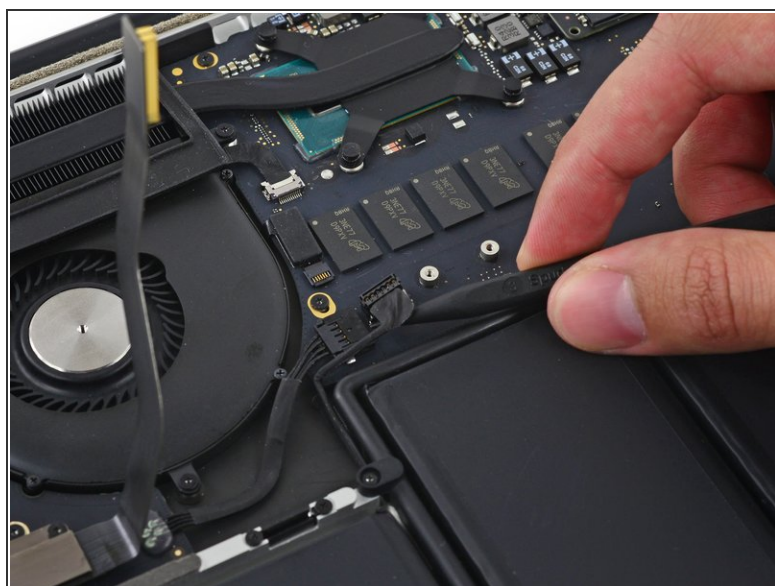
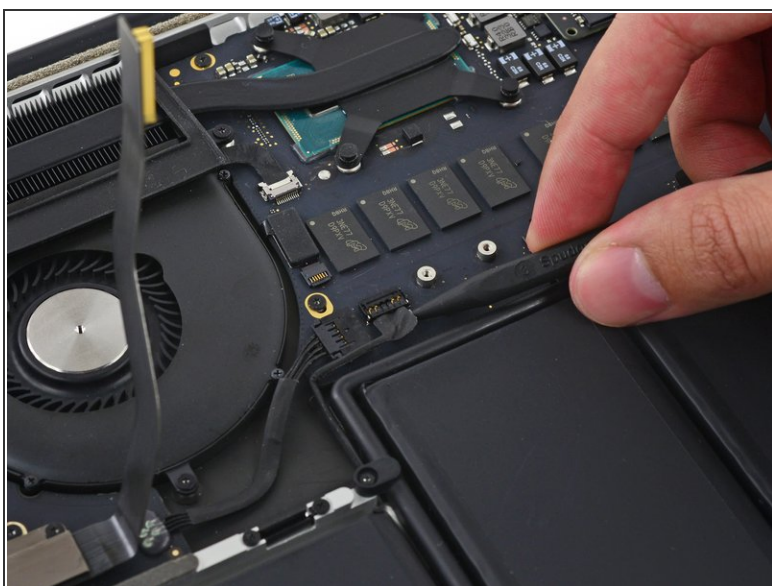
Step 9



- Lift the logic board end of the I/O board cable straight up to bend it out of the way.

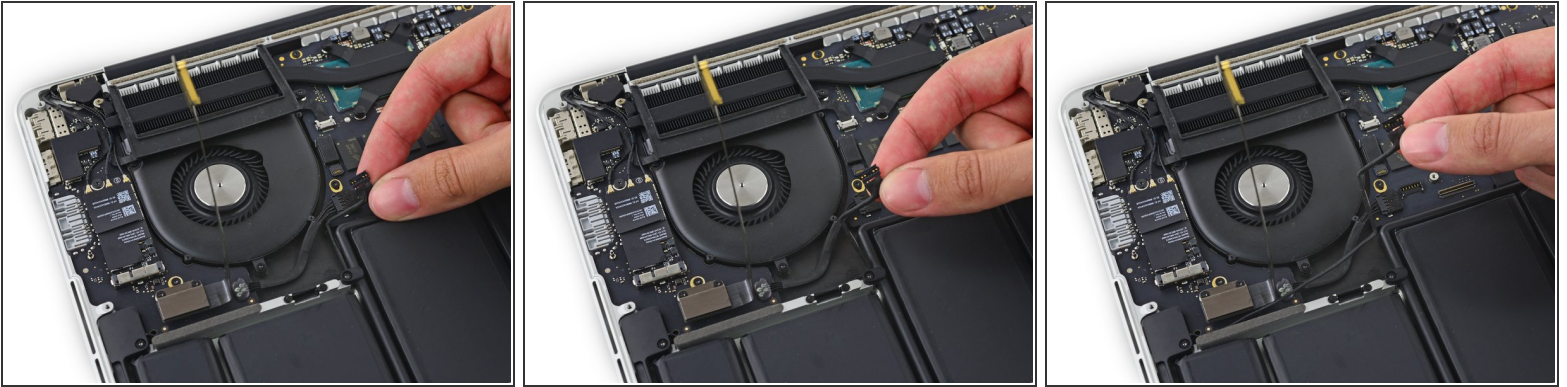
⚠ To avoid damage to the cable, fold only at the bend in the I/O board end of the cable.

Step 10



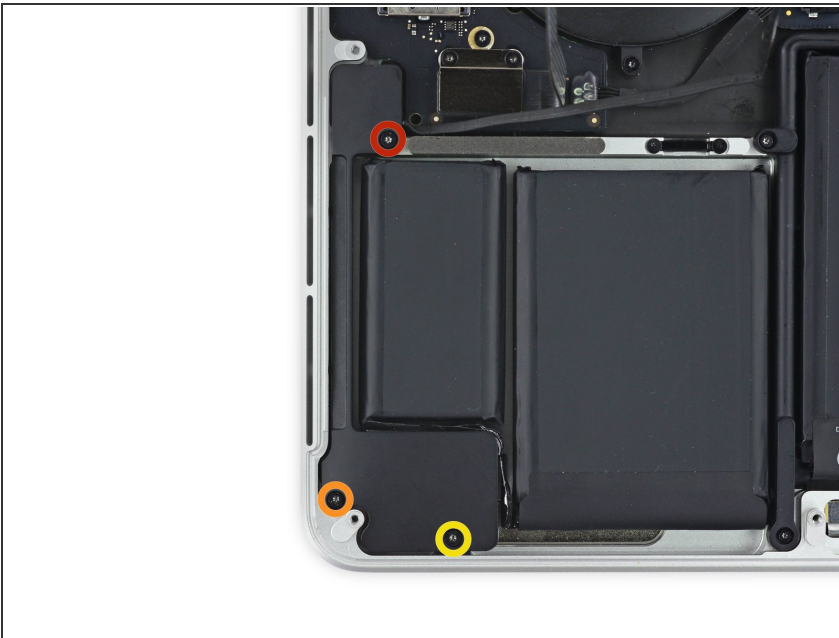
- Carefully tuck the tip of a spudger under the right speaker cable near the connector and lift it up out of its socket on the logic board.

Step 11



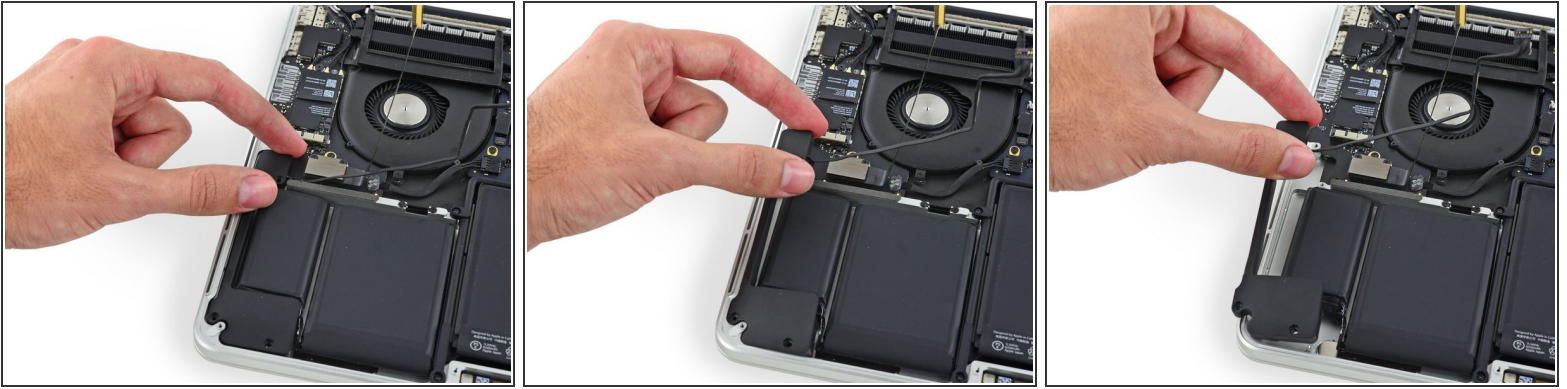
- Carefully peel the right speaker cable off the upper case.

Step 12



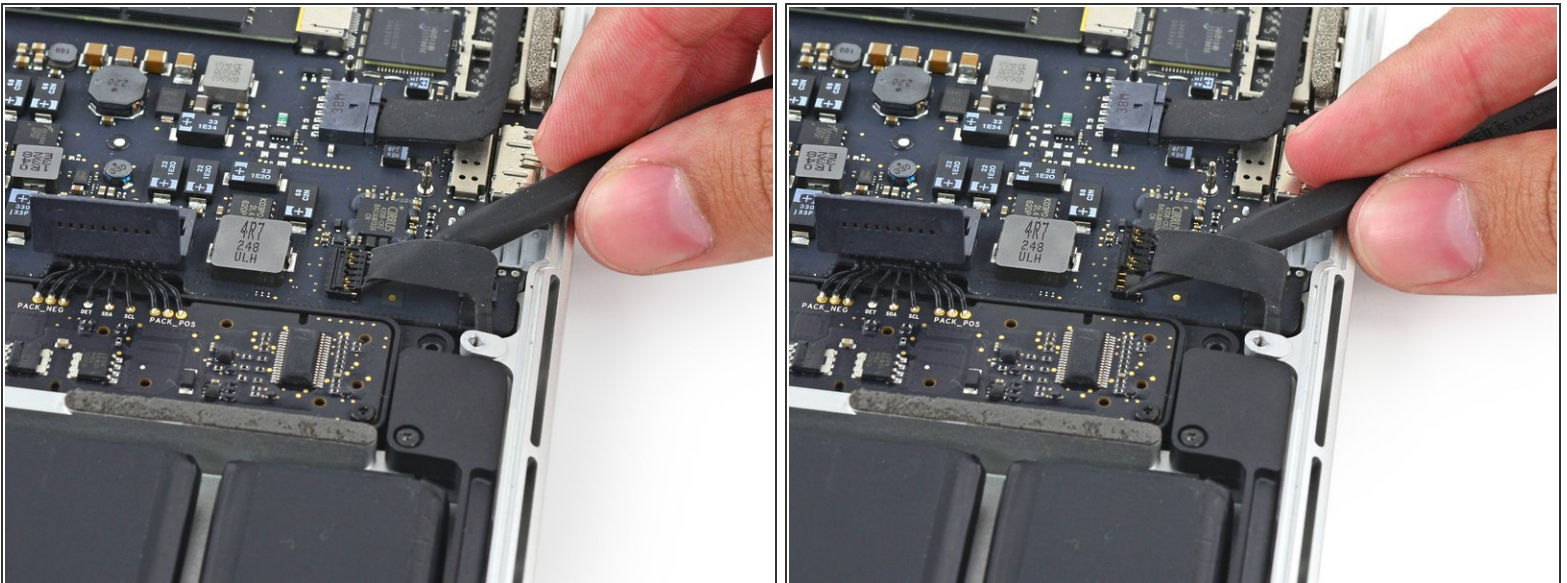
- Remove the following screws securing the right speaker to the upper case:
 - One 5.7 mm T5 Torx screw
 - One 6.5 mm T5 Torx screw
 - One 3.8 mm T5 Torx screw

Step 13



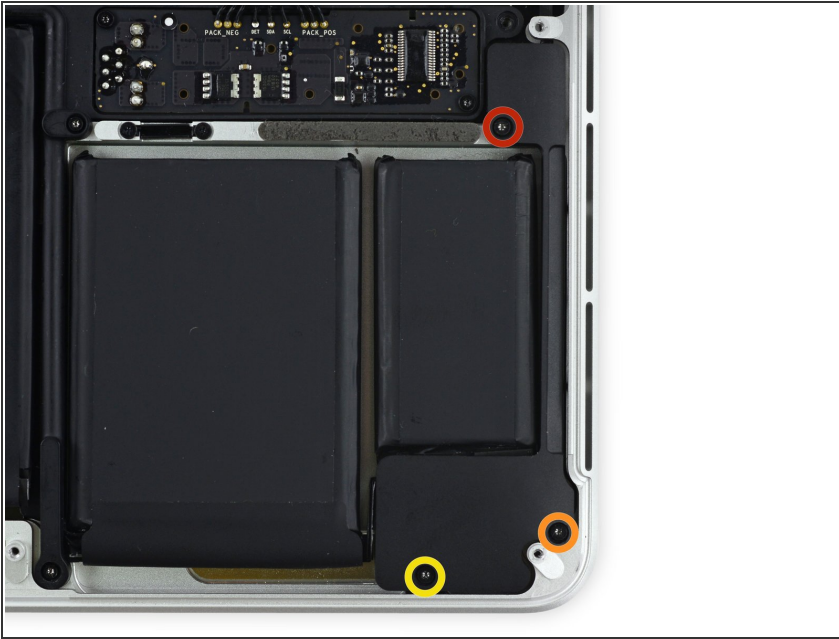
- Lift the right speaker from the cable end and pull it free from the case.

Step 14 — Left Speaker



- Insert the tip of a spudger under the left speaker cable near the connector and lift it up out of its socket on the logic board.

Step 15



- Remove the following screws securing the left speaker to the upper case:
 - One 5.7 mm T5 Torx screw
 - One 6.5 mm T5 Torx screw
 - One 3.8 mm T5 Torx screw

Step 16



- Lift the corner of the left speaker up and slide it out the battery to remove it from the upper case.

⚠ Be careful **not** to snag the speaker cable on the screw hole post in the side of the case.

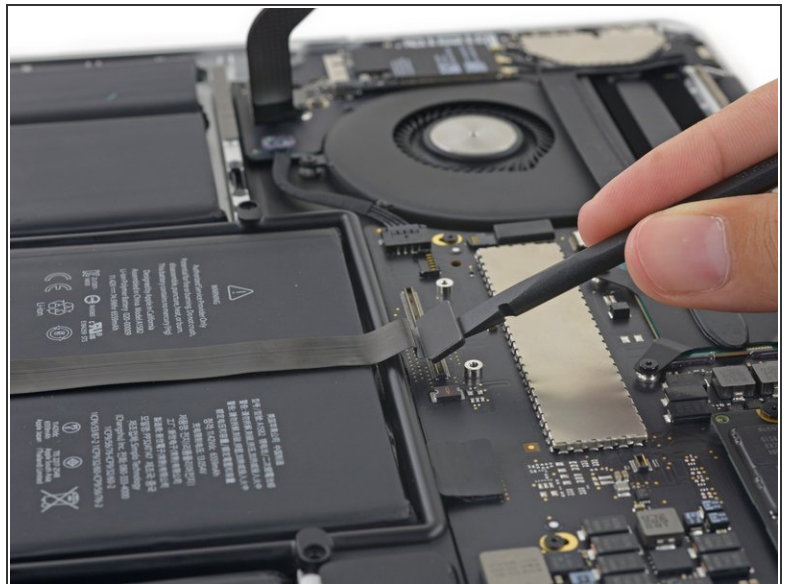
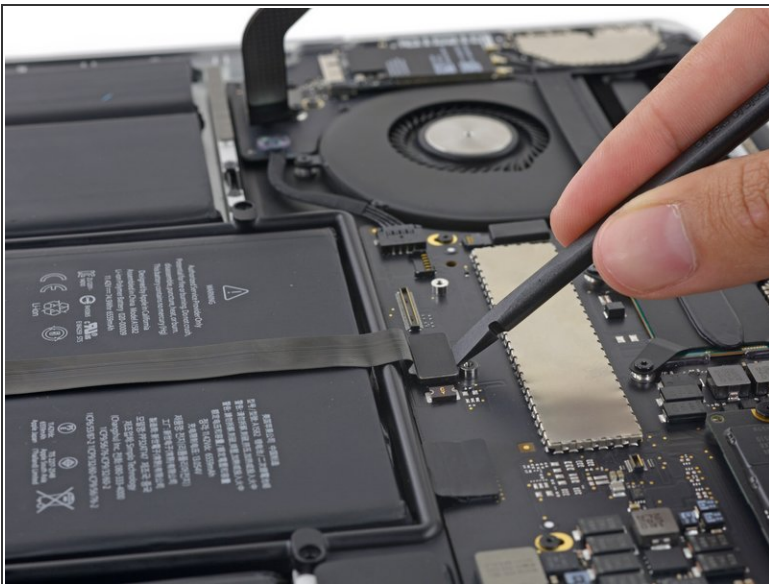
Step 17 — Upper Case Assembly



i If your replacement part comes with trackpad, battery, or other components, don't remove them from your old device, simply skip those steps in this guide.

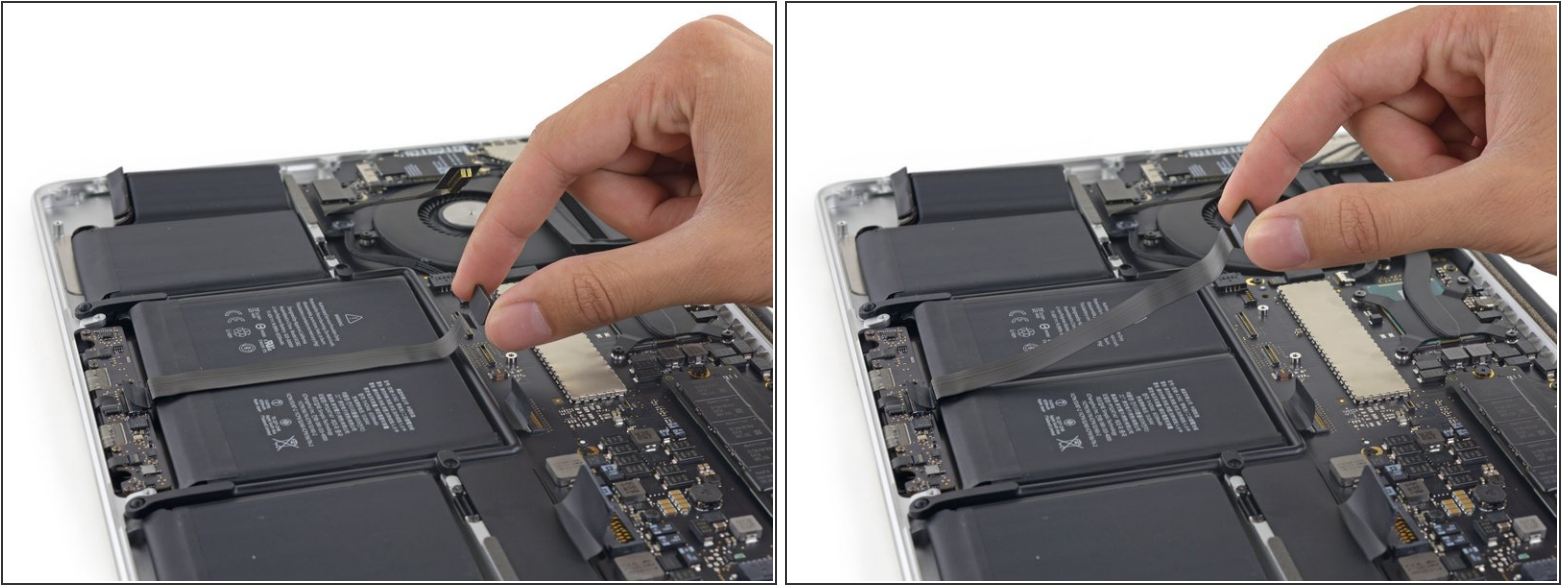
! Be sure to read through the rest of the guide so you can be sure to transfer all of the necessary components.

Step 18 — Trackpad Cable



- Use the flat end of a spudger to pop the trackpad connector straight up off its socket on the logic board.

Step 19



- Lift the trackpad cable up off the battery to separate it from the adhesive securing it.
 - ⚠ Be careful not to damage the cable. If it doesn't peel up easily, apply a little heat from an iOpener, heat gun, or hair dryer to soften the adhesive, and try again.

Step 20



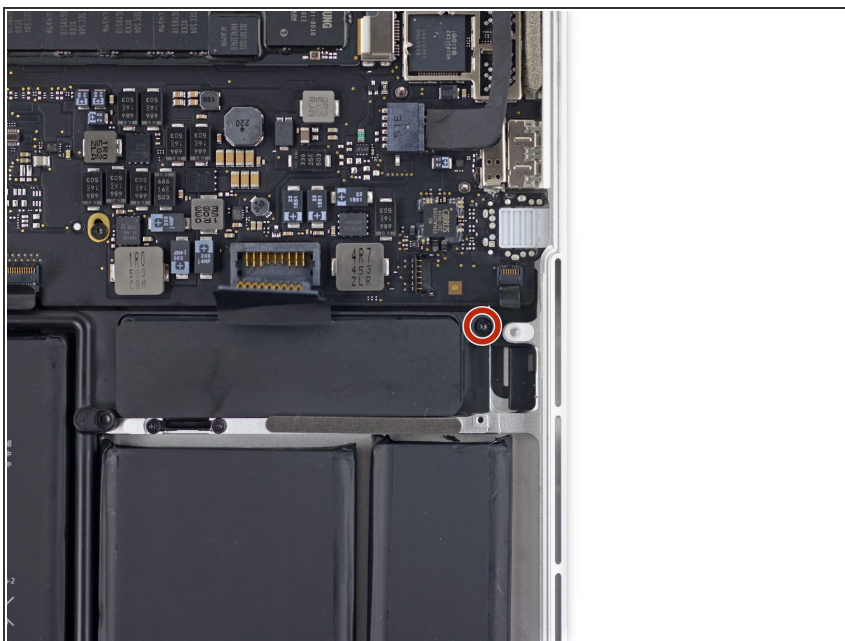
- ⓘ If necessary, peel back any tape covering the trackpad cable connector.
- Use the end of a spudger to flip the retaining tab on the ZIF connector.

Step 21



- Pull the trackpad cable straight out of its ZIF socket on the trackpad control board.

Step 22



- Remove the single 3.7 mm T5 Torx screw securing the battery board to the upper case.

Step 23 — iOpener Heating



- i** We recommend that you clean your microwave before proceeding, as any nasty gunk on the bottom may end up stuck to the iOpener.
- Place the iOpener in the center of the microwave.
- !** For carousel microwaves: Make sure the plate spins freely. If your iOpener gets stuck, it may overheat and burn.

Step 24



- Heat the iOpener for **thirty seconds**.
- Throughout the repair procedure, as the iOpener cools, reheat it in the microwave for an additional thirty seconds at a time.

- ⚠ Be careful not to overheat the iOpener during the repair. Overheating may cause the iOpener to burst.
- ⚠ Never touch the iOpener if it appears swollen.
- ⚠ If the iOpener is still too hot in the middle to touch, continue using it while waiting for it to cool down some more before reheating. A properly heated iOpener should stay warm for up to 10 minutes.

Step 25



- Remove the iOpener from the microwave, holding it by one of the two flat ends to avoid the hot center.

⚠ The iOpener will be very hot, so be careful when handling it. Use an oven mitt if necessary.

Step 26 — Battery




- ⓘ The liquid adhesive remover provided in your iFixit battery replacement kit can affect the

antireflective coating on your MacBook Pro's display.


- To protect your display, place a sheet of aluminum foil between the display and keyboard and leave it there while you work.

Step 27



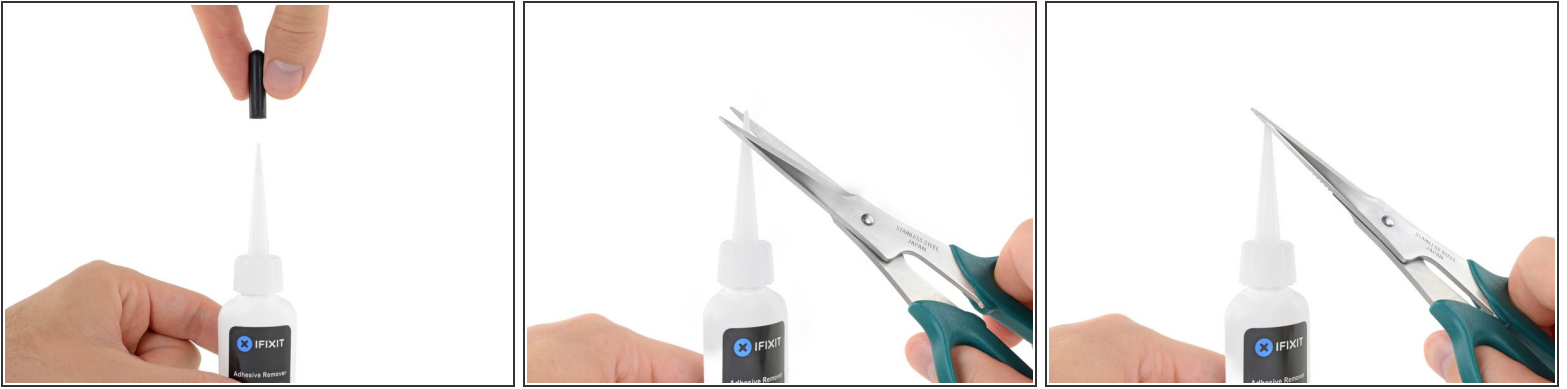
 If you have an iFixit battery kit with liquid adhesive remover, it's time to get it prepped.

- Alternatively, if you are using the hot iOpener method, skip the following three steps.


 iFixit adhesive remover contains acetone, a mild skin and eye irritant.


- Wear eye protection when handling and applying the adhesive remover. (Eye protection is included in your kit.)
- **Do not** wear contact lenses without eye protection.
- Protective gloves are also included in your kit. If you are concerned about skin irritation, put your gloves on now.

Step 28





- Pull off the black rubber stopper from your bottle of adhesive remover.

 **Twist to loosen or remove the bottle cap before you cut the applicator tip.**

 This unseals the bottle and allows the pressure to equalize before you cut the applicator tip. **If you skip this step, the adhesive remover may spray out unexpectedly when the tip is cut.**

- Use scissors to cut off the sealed tip of the applicator.

 Cutting close to the narrow tip will give you better control so you can apply the adhesive remover in small amounts.

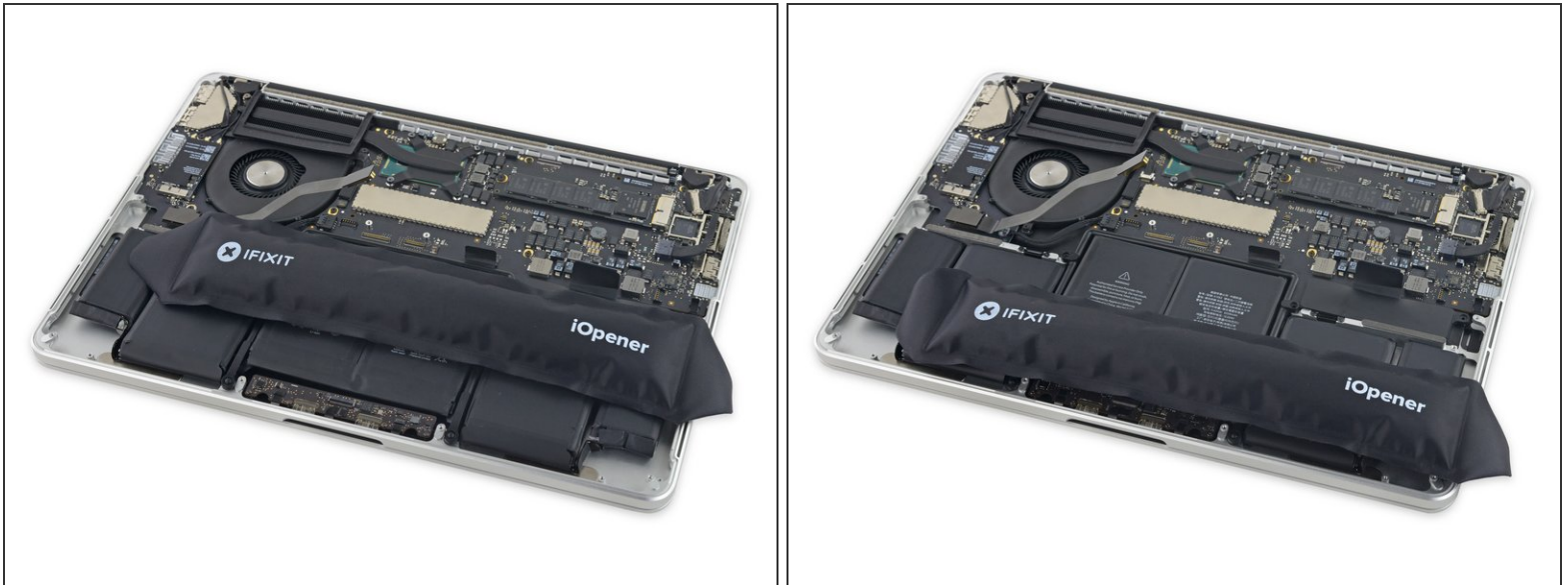
 **Twist and close the bottle cap securely before you proceed further.**

Step 29



- Apply a few drops of adhesive remover evenly under the edge of the rightmost battery cell.
- ⓘ You don't need to use very much. The small bottle contains more than twice the amount of solvent needed to remove all the battery cells.
- Wait 2-3 minutes for the liquid adhesive remover to penetrate underneath the battery cell before you proceed to the next step.

Step 30




- i** If you don't have a liquid adhesive remover, you'll be using a [hot iOpener](#) to warm and soften a section of the adhesive securing the battery to the upper case, and then carefully prying at that point.
- Use the hot iOpener to cover half of the right-most battery cells.
 - After about a minute, reheat the iOpener and move it to cover the other half of the right-most battery cells.

Step 31



- Push a plastic card between the right-most battery cell and the upper case, cutting the adhesive between the two.

 Throughout this procedure, be careful not to damage any of the battery cells with your tools. A damaged lithium-ion battery may leak dangerous chemicals and/or catch fire. Use only plastic pry tools.

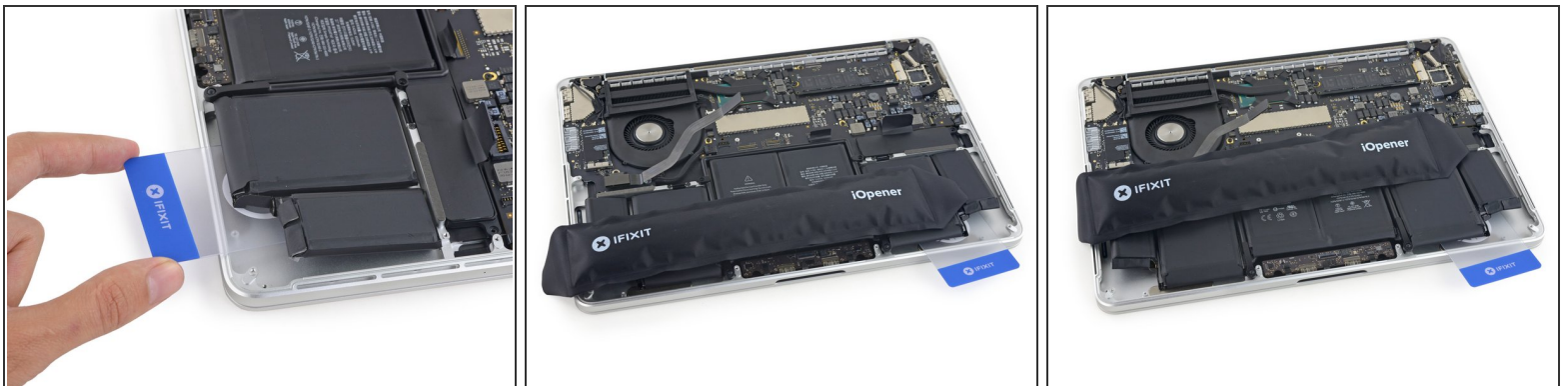
- When using the hot iOpener method, if you encounter significant resistance to prying, stop and use the iOpener to reheat the section you're working on.

Step 32



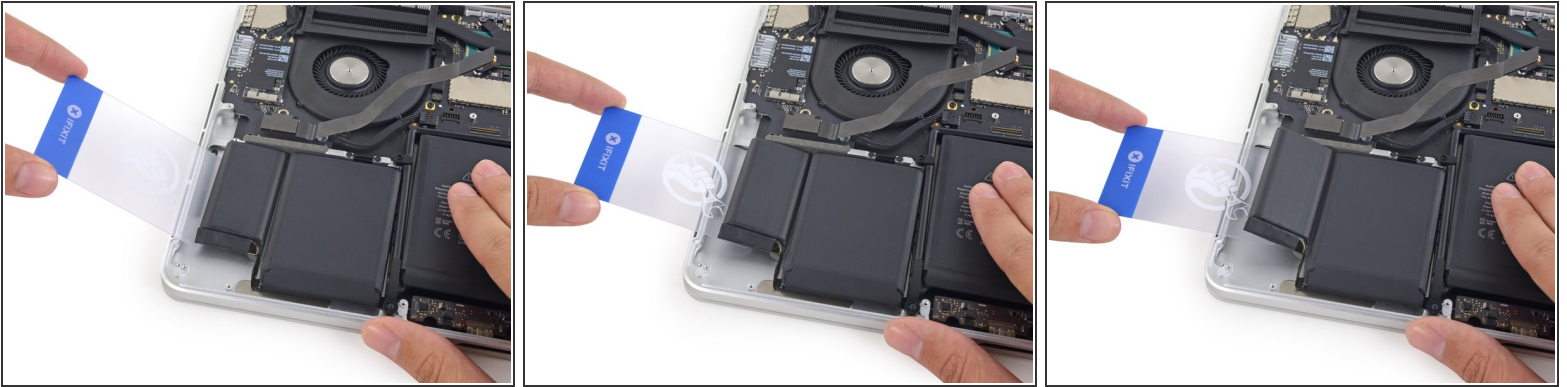
- Repeat this procedure with the adjacent battery cell:
 - Apply a small amount of liquid adhesive remover under the battery cell, and wait 2-3 minutes for it to penetrate and soften the adhesive.
 - Alternatively, re-heat this section with your iOpener if needed.
 - Push a plastic card about an inch between the battery cell and the upper case, and slowly pry the cell up to separate all of the adhesive.

Step 33



- Temporarily leave your plastic card underneath the two rightmost battery cells to prevent them from re-adhering to the upper case.
- If using an iOpener, reheat it and reapply it, this time to the left-most battery cells.
 - ❗ Again, leave the iOpener in each position for about a minute, reheating in between, to heat each half of the left-most battery cells.


Step 34



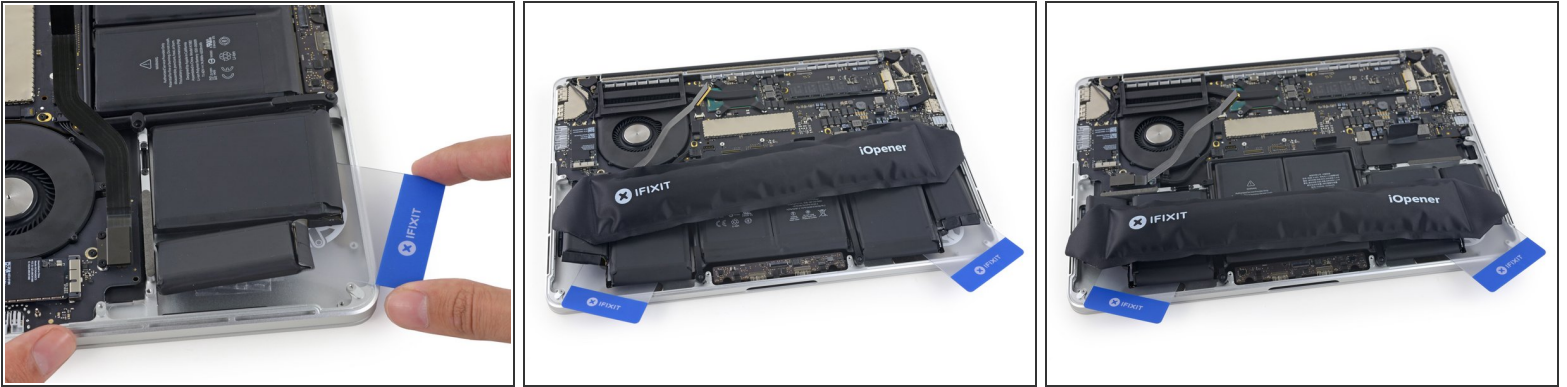
- Repeat the above procedure to separate the two leftmost battery cells from the upper case.
- Remember to apply a small amount of adhesive remover to each battery cell, and wait 2-3 minutes for it to penetrate and soften the adhesive.
- Use a second plastic card to separate the two leftmost battery cells from the upper case.

Step 35



-  Continue to repeat the prying procedure.
- Insert the plastic card between the second left-most battery cell and the upper case to cut the adhesive joining the two, and pry the cell up from the case.

Step 36



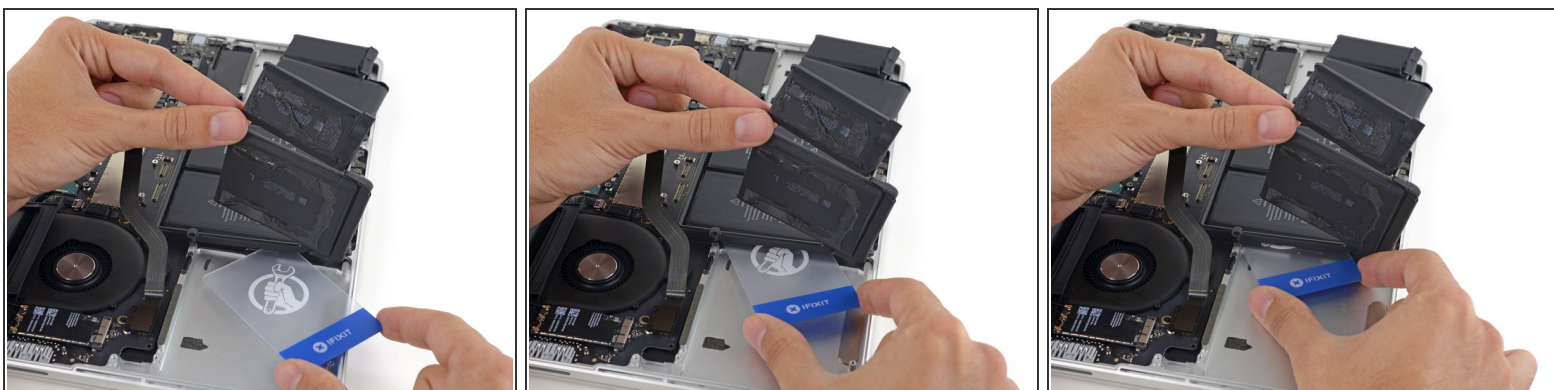
- Leave the second card in the corner between the two left cells.
- If using an iOpener, reheat it and apply it to the central battery cells.
 - As before, leave the iOpener in each position for about a minute, reheating in between, to heat each half of the center cells.
- In the following steps, you can either use a third card, or the card from the right corner. The right corner adhesive should be dry/cool enough that the cells can easily be pulled up again when needed.

Step 37



- If using liquid adhesive remover, apply a few more drops under each of the final two, middle cells.
- ❗ It may help to elevate one side of your MacBook Pro a few inches so that the adhesive remover flows in the correct direction, underneath the battery cells. You can use a sturdy book or foam block to prop up one side of your MacBook Pro while you work.
- Allow 2-3 minutes for the adhesive remover to penetrate before you continue.
- Gently folding the right-most battery cells out of the way, insert a plastic card under the right center cell.
- Push the card in about half of its length to cut the adhesive holding the battery cell to the case.
- ⚠ Be sure to avoid the trackpad control board. Aim the card up toward the logic board, where the adhesive is.
- Leave the card in place to keep the adhesive from re-sealing.

Step 38



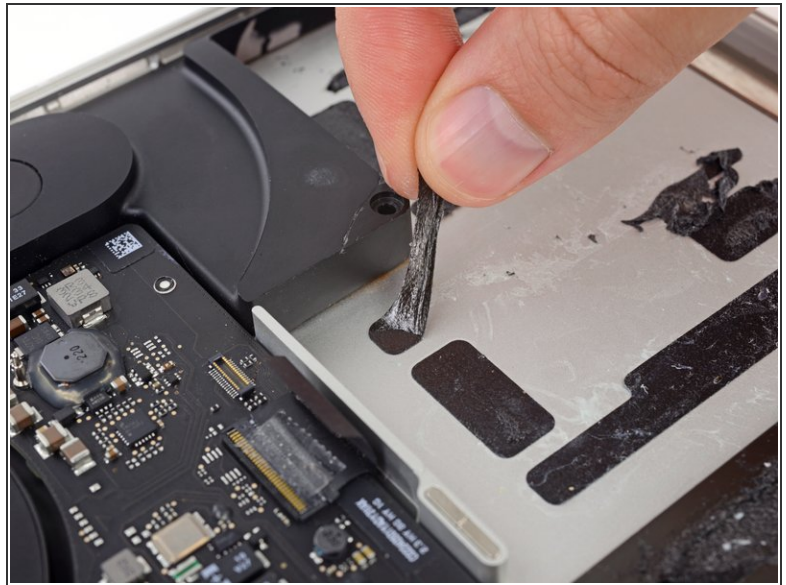
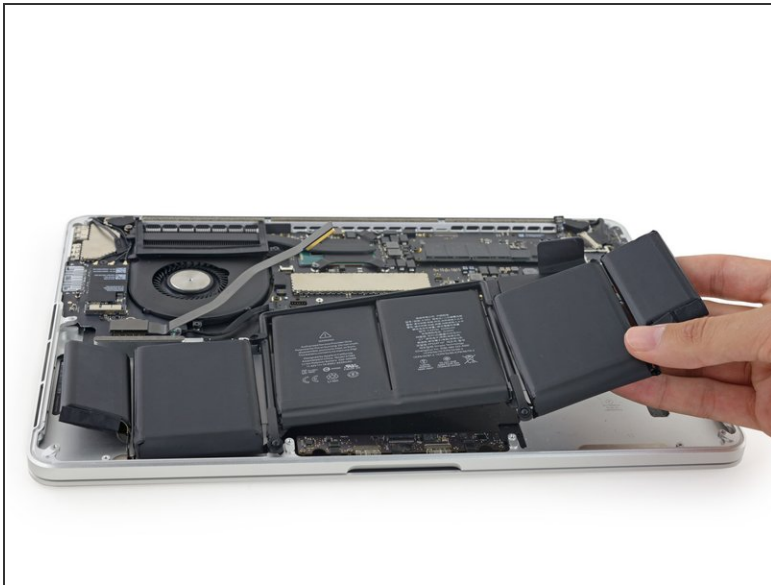
- Repeat the same procedure for the last remaining battery cell.
- Holding the outer cells out of the way, insert the plastic card about halfway under the left center battery cell, avoiding the trackpad board.

Step 39



- Return to the card beneath the right-center cell, and twist it to separate the entire battery from the upper case.
- ⓘ By now you should have cut all of the adhesive securing the battery to the upper case, and it should come out freely.
- If it does not come out easily, you may need to reheat the iOpener and apply it to the stuck areas, and then continue gently cutting the adhesive with the plastic cards.

Step 40



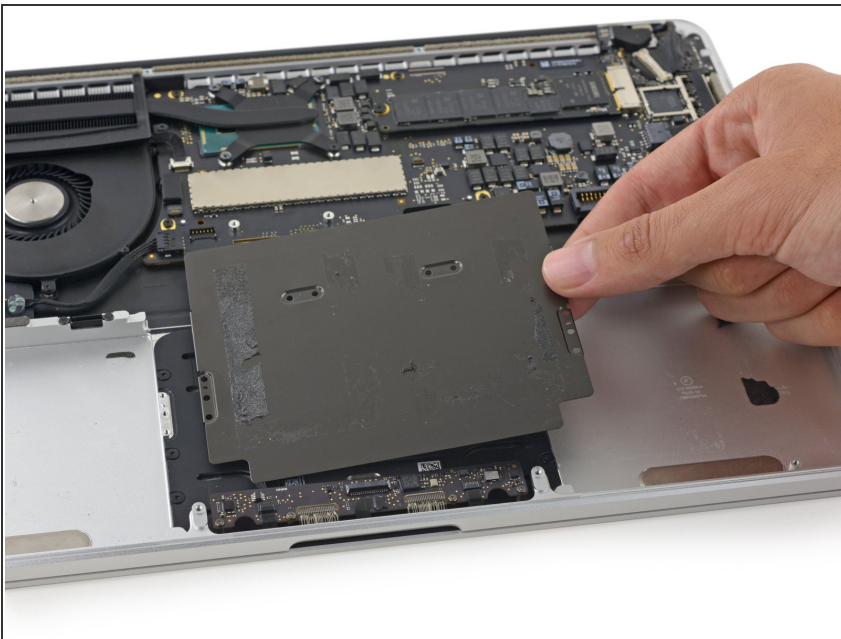
- Remove the battery.
- ✦ Before installing your new battery, remove all the old adhesive from the MacBook Pro's case.
 - With a little luck, you can slowly pull out each strip of adhesive with your fingers.
 - Otherwise, soak each section of adhesive with a bit of adhesive remover for 2-3 minutes, and then scrape it out with an opening pick or one of the other tools in your kit. This can take quite a bit of work, so be patient.
 - Mop up any remaining adhesive remover and give your MacBook Pro a few minutes to air dry.
- ✦ The replacement battery included in your iFixit kit comes with adhesive pre-installed. Test the battery's fit and alignment carefully before peeling off the film covering the adhesive, and then press each cell firmly into place. If any additional films/liners are present that weren't on your original battery, remove them now.
- [Calibrate](#) your newly installed battery: charge it to 100%, and keep charging it for at least 2 more hours. Unplug and use it normally to drain the battery. When you see the low battery warning, save your work, and keep your laptop on until it goes to sleep due to low battery. Wait at least 5 hours, then charge your laptop uninterrupted to 100%.
- If you notice any unusual behavior or problems after installing your new battery, you may need to [reset your MacBook Pro's SMC](#).

Step 41 — Trackpad



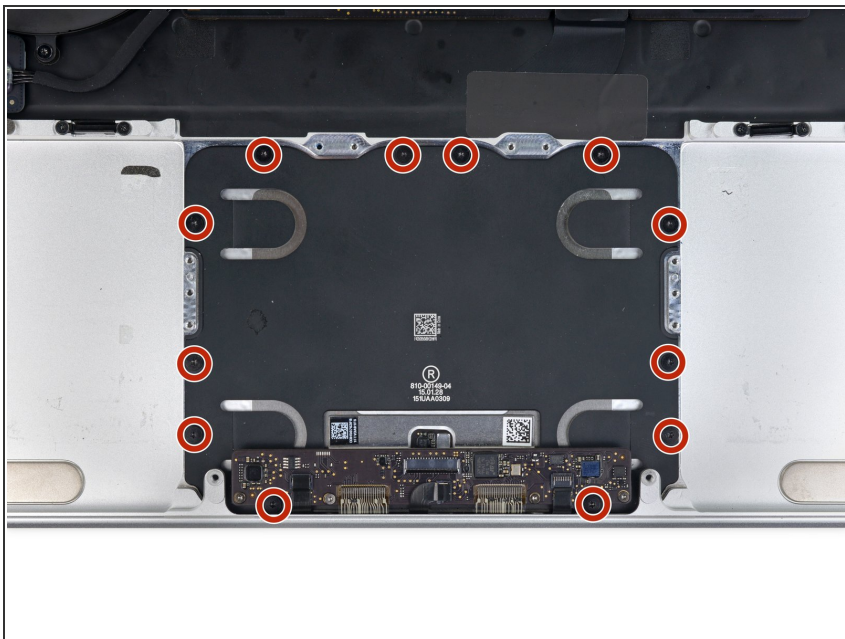
- Remove the ten 2.8 mm T3 screws securing the trackpad cover plate to the upper case.

Step 42



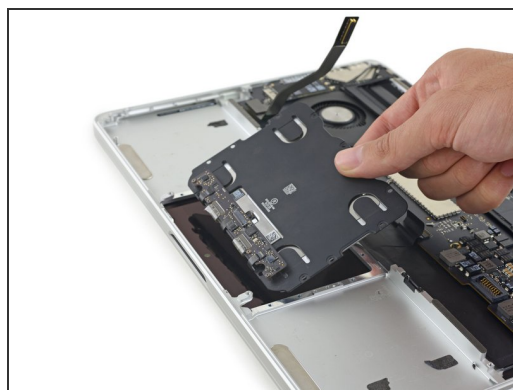
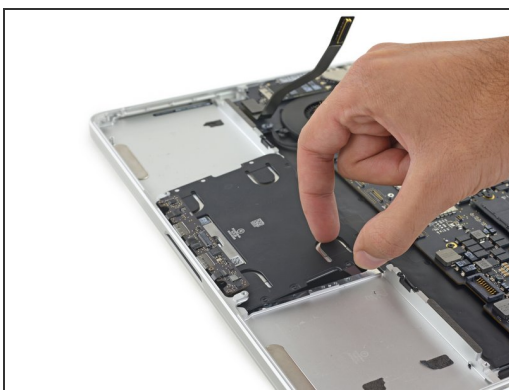
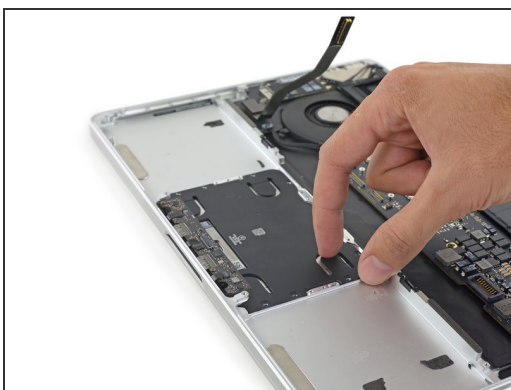
- Remove the trackpad cover plate.

Step 43



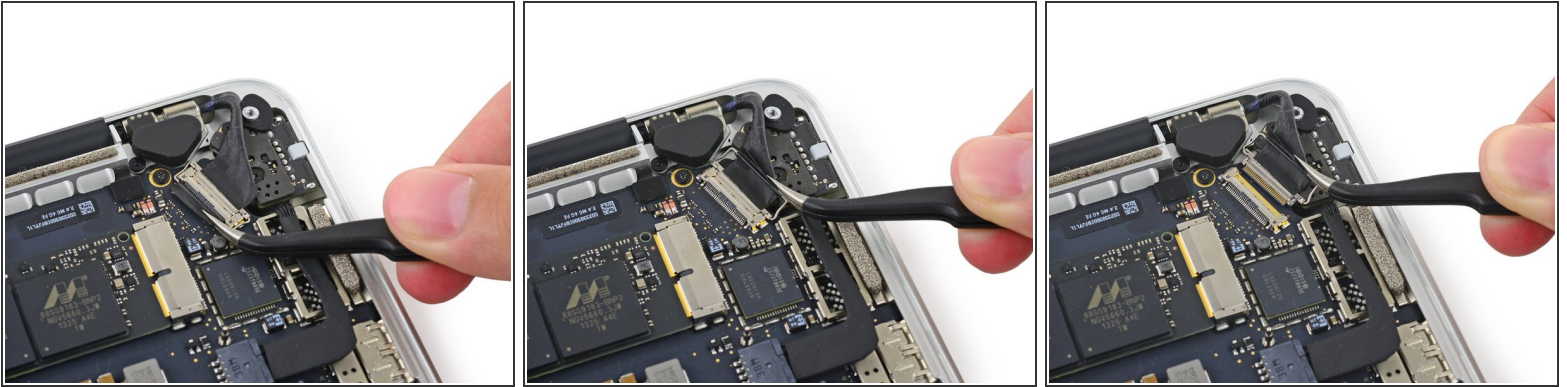
- Remove the twelve 2.4 mm T5 screws securing the trackpad to the upper case.

Step 44



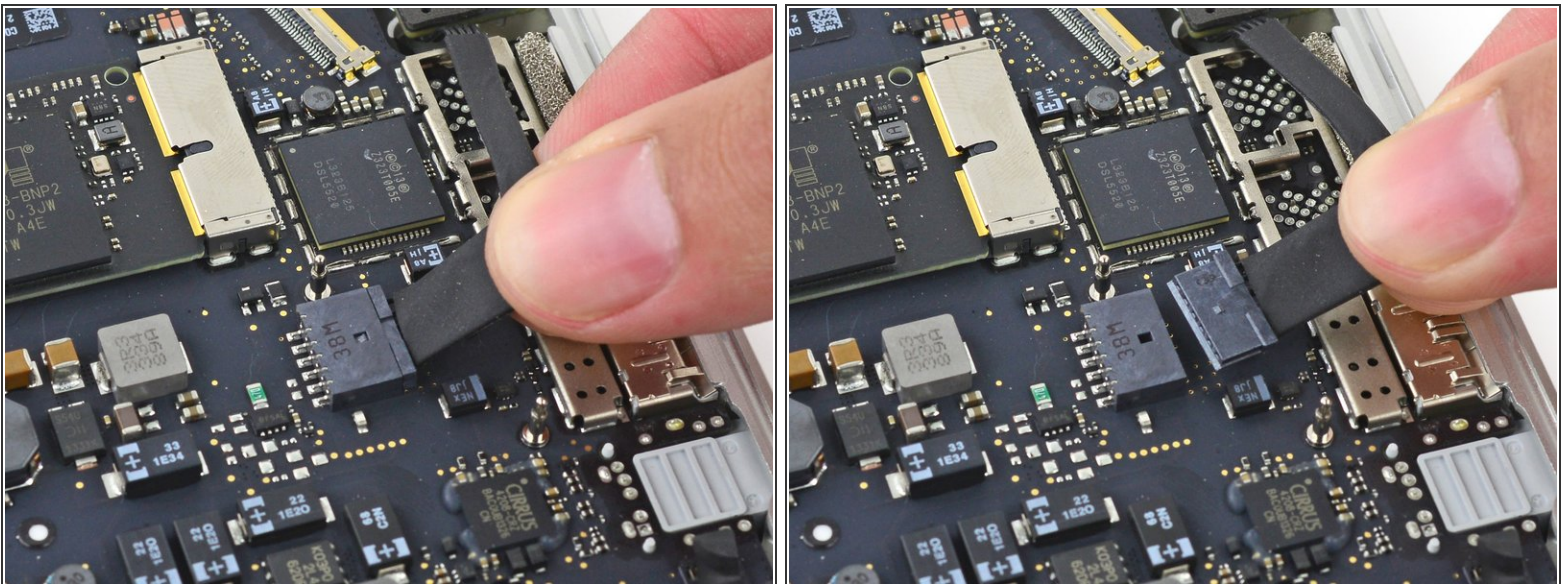
- Lift up and remove the trackpad from the upper case.

Step 45 — MagSafe DC-In Board



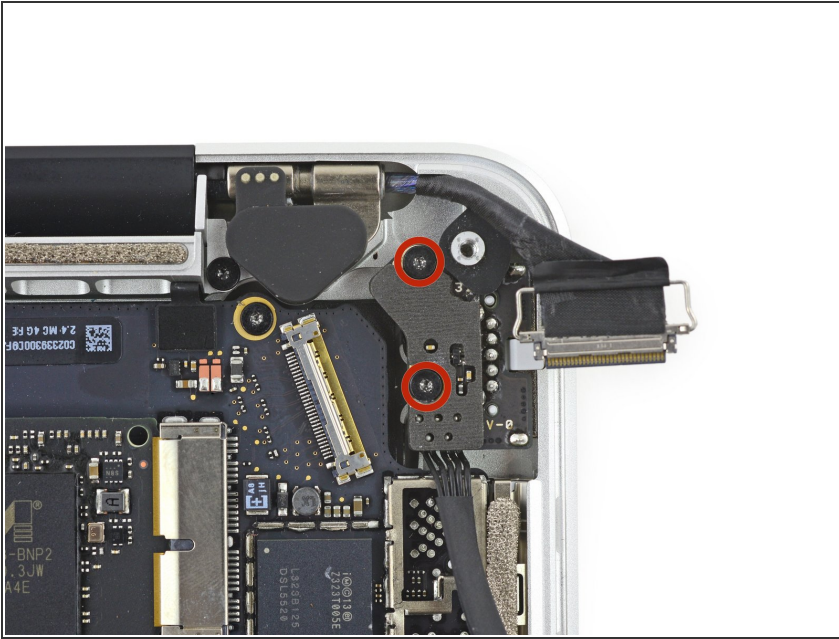
- Grab the black plastic tab to flip the display cable connector open and pull it straight out of its socket on the logic board.
- Pull in the direction of the cable, parallel to the logic board. Do not pull up.

Step 46



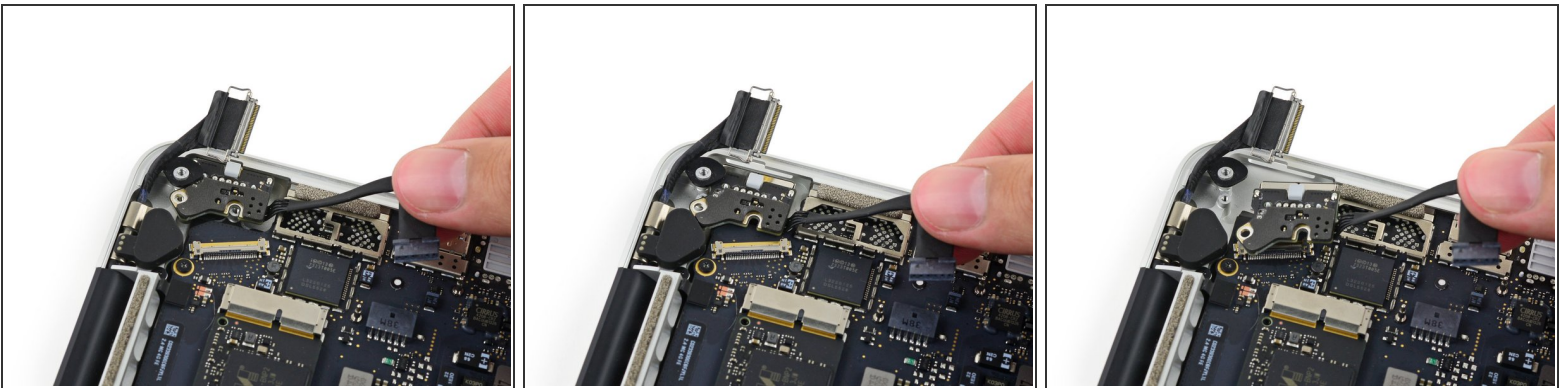
- Pull the DC-In board connector straight out of its socket on the logic board.

Step 47



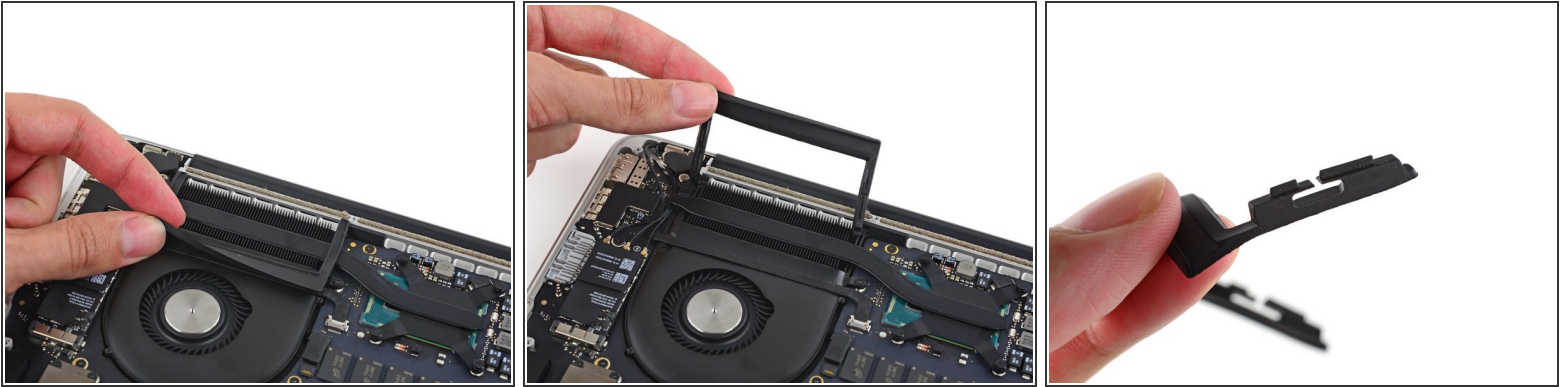
- Remove the two 3.5 mm T5 Torx screws securing the MagSafe DC-In board to the upper case.
- ⓘ You may need to gently push the display cable out of the way to expose the screws.

Step 48



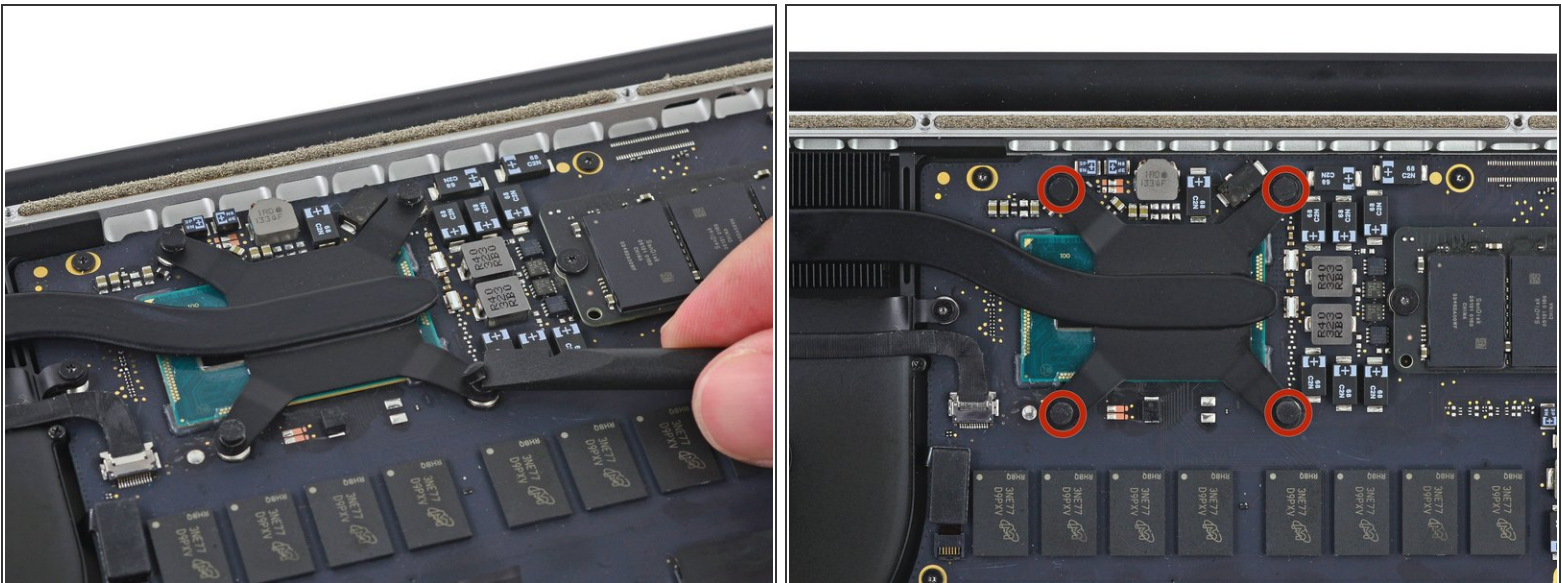
- Use the MagSafe DC-In board cable to pull the board out and up from the upper case to remove it.

Step 49 — Upper Case



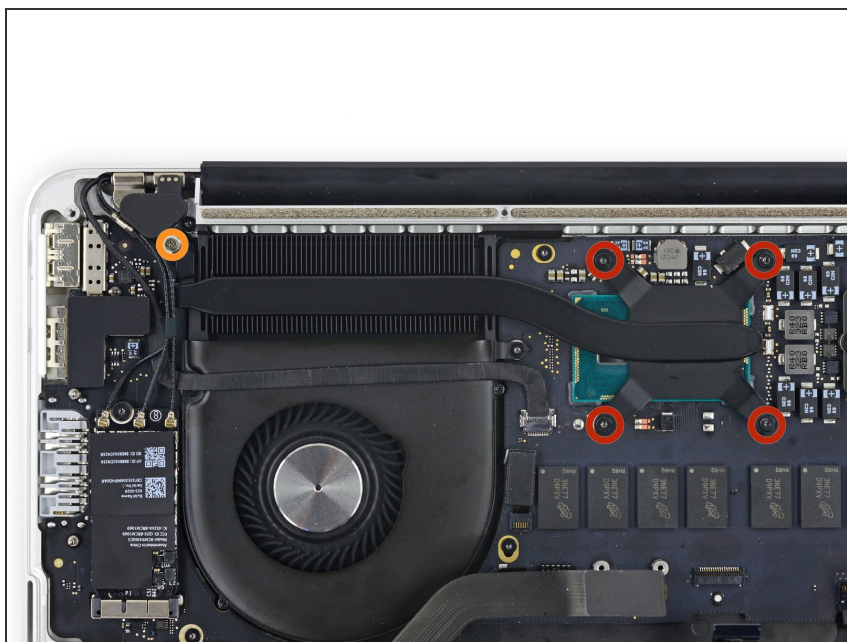
- Carefully remove the rubber fan bumper from the edge of the heat sink.
- ⓘ The fan bumper wraps around the heat sink and fits into slots in the fan duct. During reassembly, be sure to fit the tabs into the notches in the fan duct.

Step 50



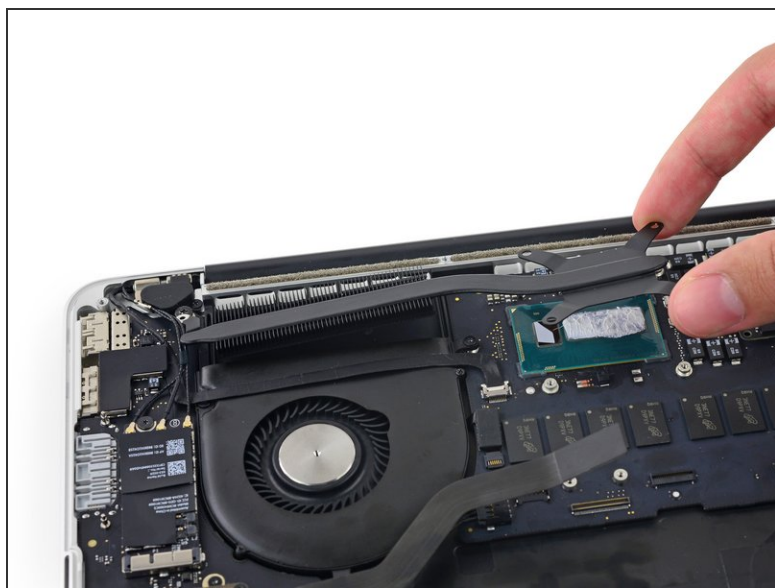
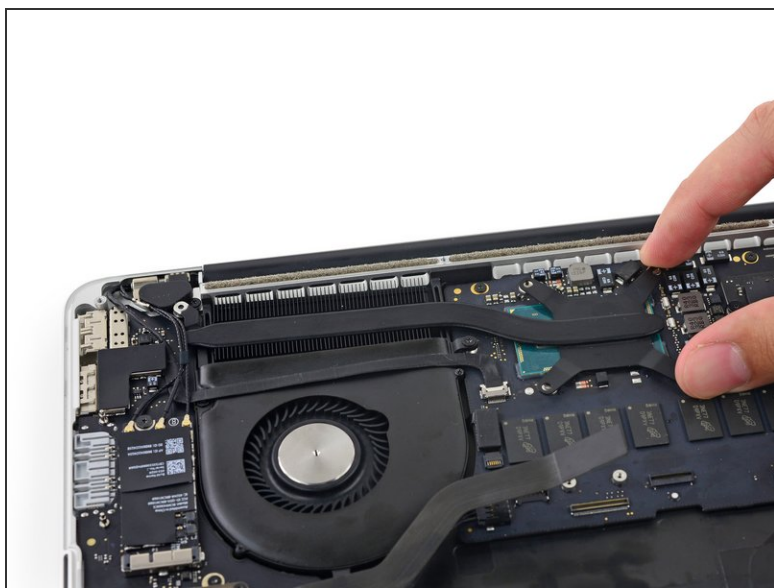
- Use the flat end of a spudger to peel the four foam stickers off of the heat sink screws.

Step 51



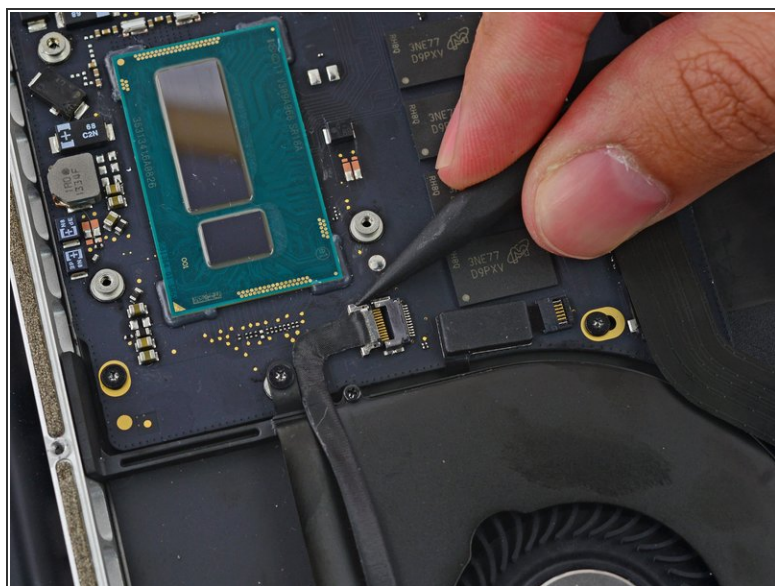
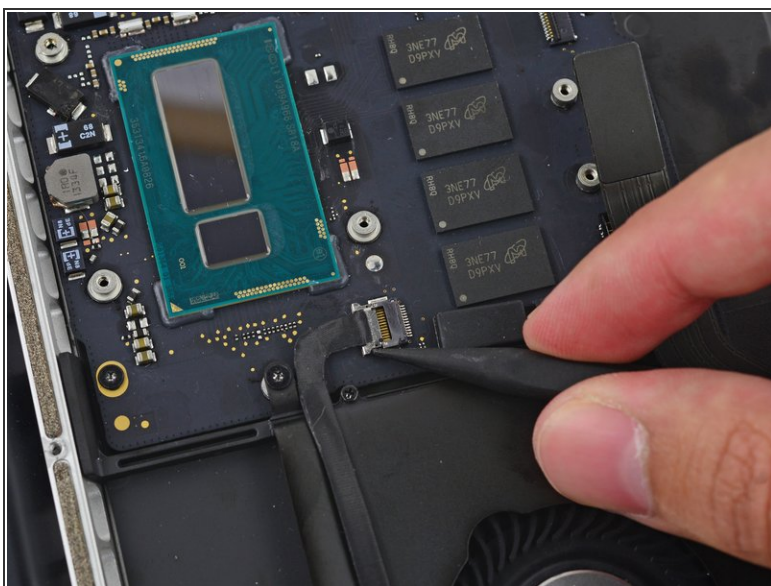
- Remove the following screws securing the heat sink:
 - Four 2.6 mm T5 screws
 - One 2.4 mm Phillips #000 screw
 - ⓘ In the Early 2015 model, this is a silver 2.7 mm T5 screw.

Step 52



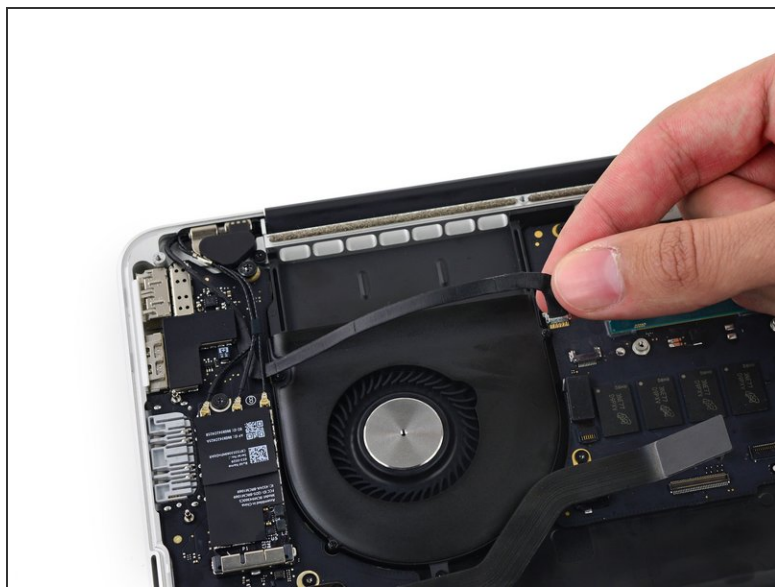
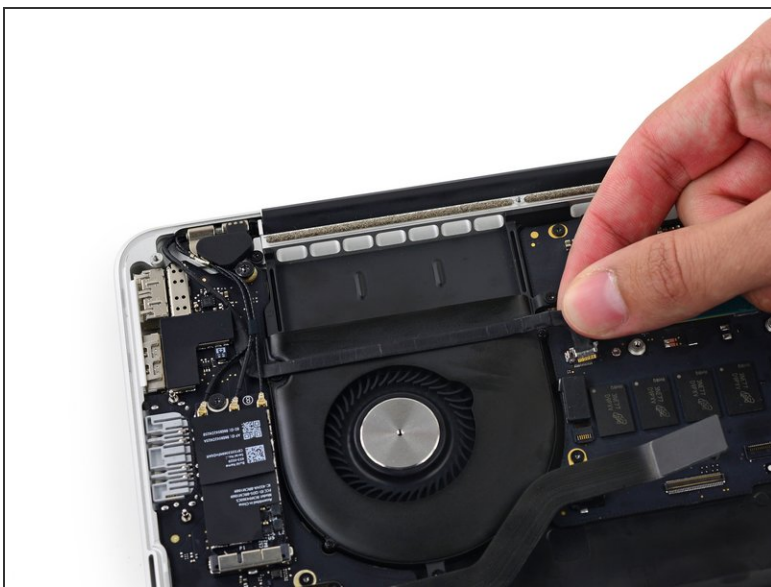
- Remove the heat sink from the laptop.
- ☑ Use the [thermal paste application guide](#) to reapply the thermal paste before reassembly.

Step 53



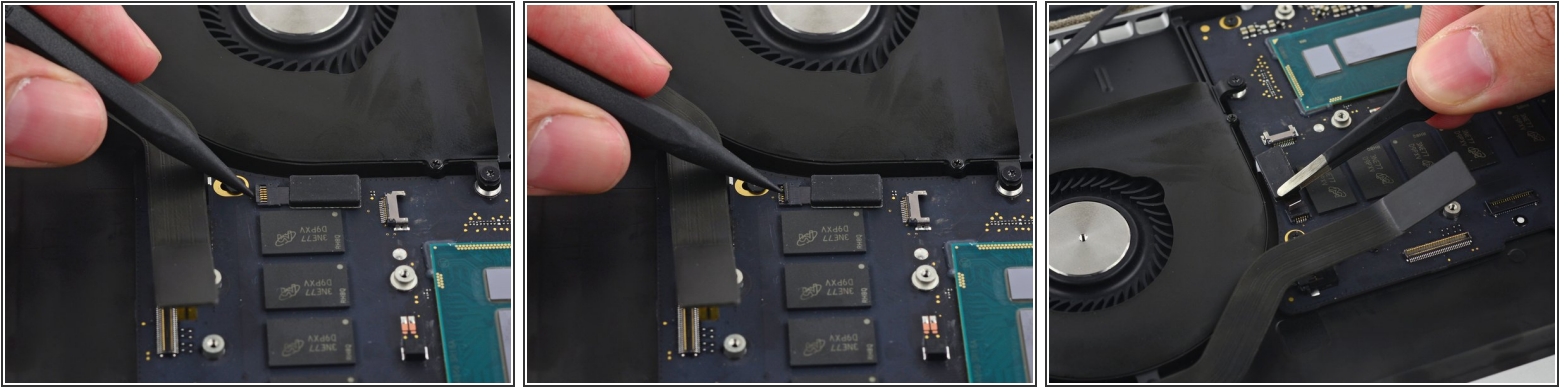
- Use the tip of a spudger to push on either side of the the iSight camera cable connector and *walk* it out of its socket on the logic board.

Step 54



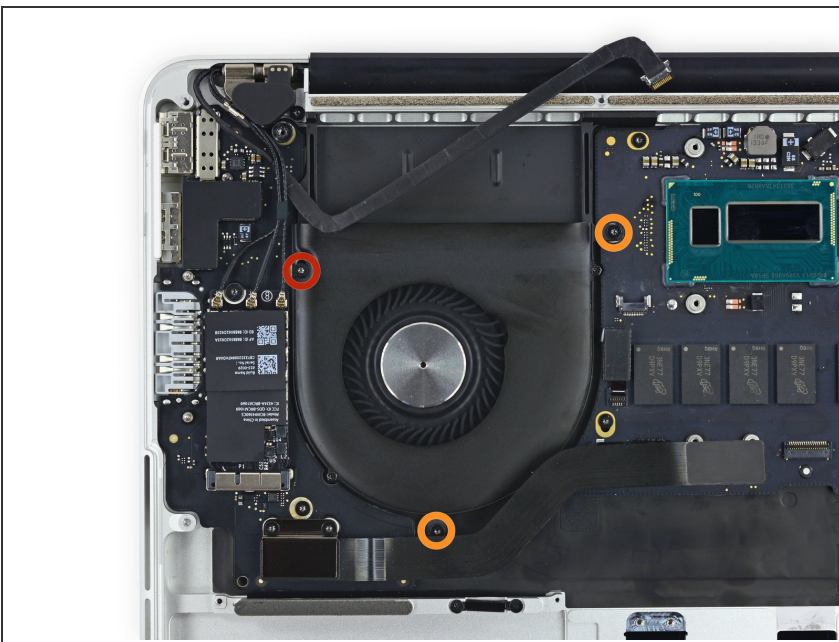
- Peel the iSight camera cable up off the fan housing to fold it out of the way.

Step 55



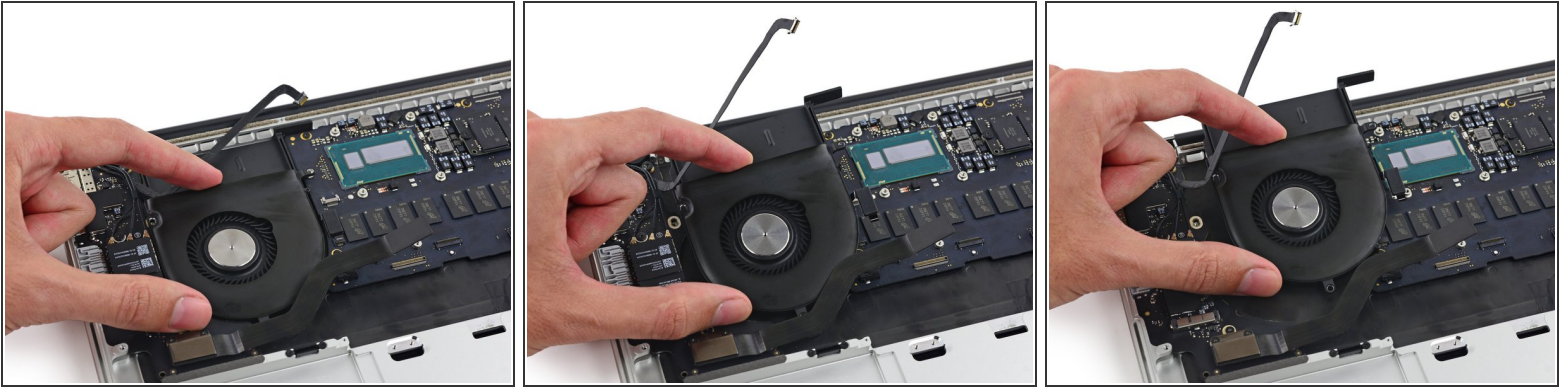
- Use the tip of a spudger to flip the tab on the fan's ZIF connector.
- Carefully pull the fan cable from its connector.

Step 56



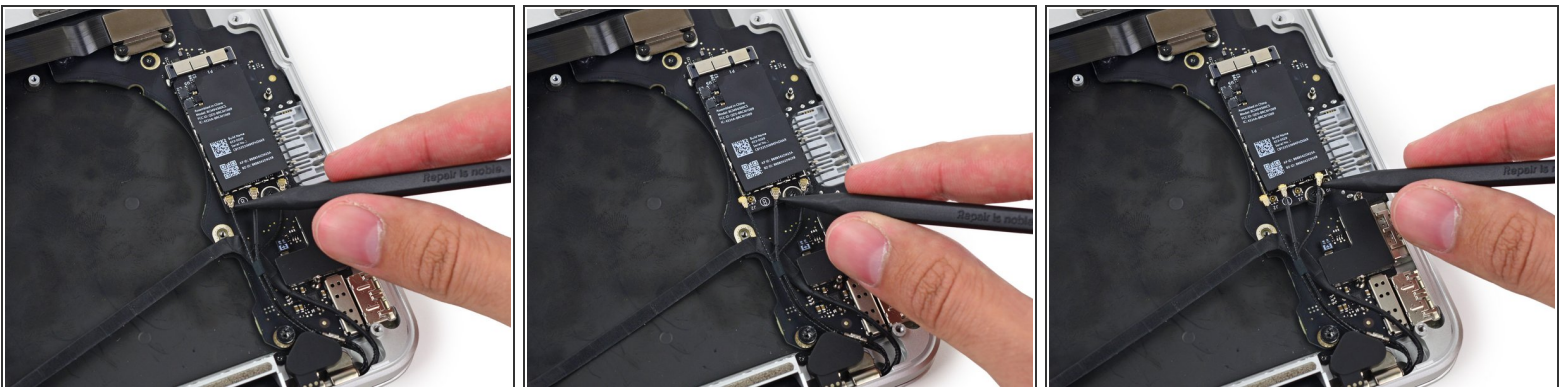
- Remove the following screws securing the fan to the upper case:
 - One 5.0 mm T5 Torx screw
 - Two 3.6 mm T5 Torx screws

Step 57



- Lift the end of the fan from the heat sink cavity and pull it up and out toward the hinge of the laptop to remove it.

Step 58



- Insert the tip of a spudger under each of the antenna cables near their connectors and pry up to disconnect them from the AirPort board.



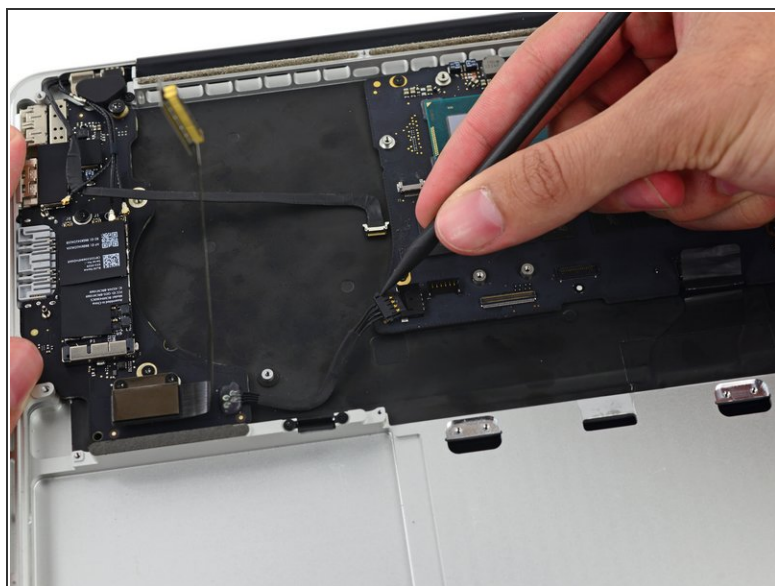
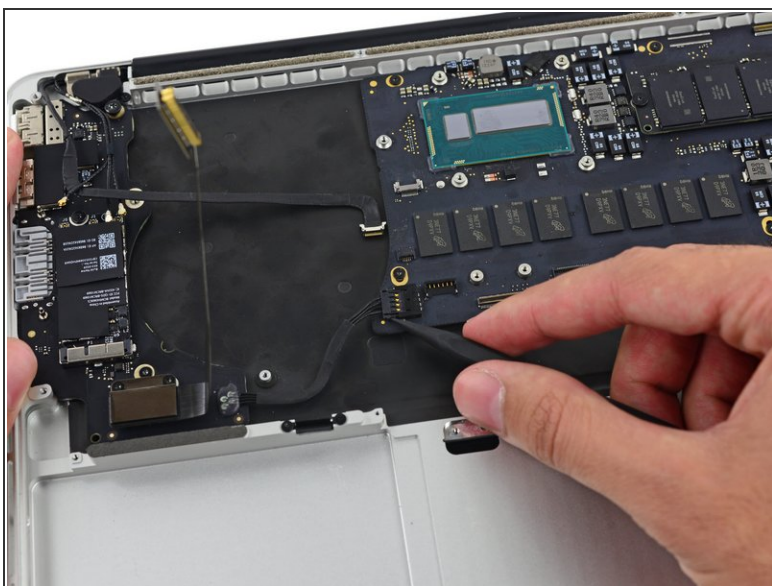
The three cables are coded with black sleeves of different lengths. During reassembly:

- Connect the long-sleeved cable to the center socket.
- The short-sleeved cable connects next to the screw.
- The remaining cable has no sleeve, and connects in the last empty socket, next to the fan.



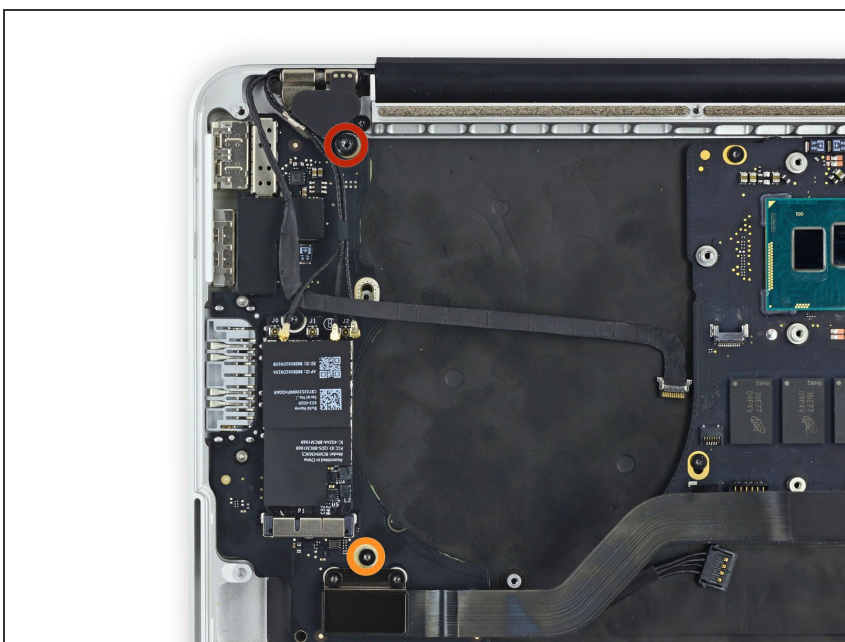
When reconnecting the antenna cables, run them over the camera cable, not underneath.

Step 59



- With the tip of a spudger, push on either side of the I/O board connector to *walk* it out of its socket on the logic board.

Step 60



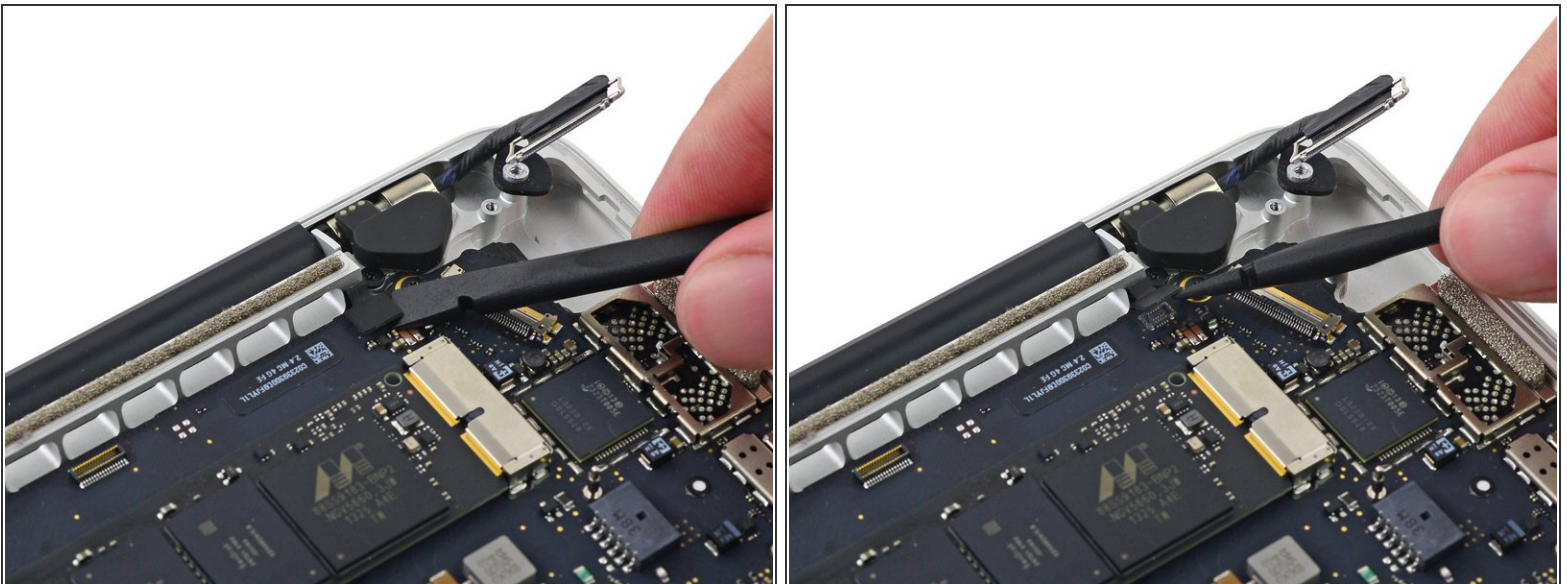
- Remove the following screws securing the I/O board to the upper case:
 - One 3.5 mm T8 Torx standoff screw
 - One 3.5 mm T5 Torx screw

Step 61



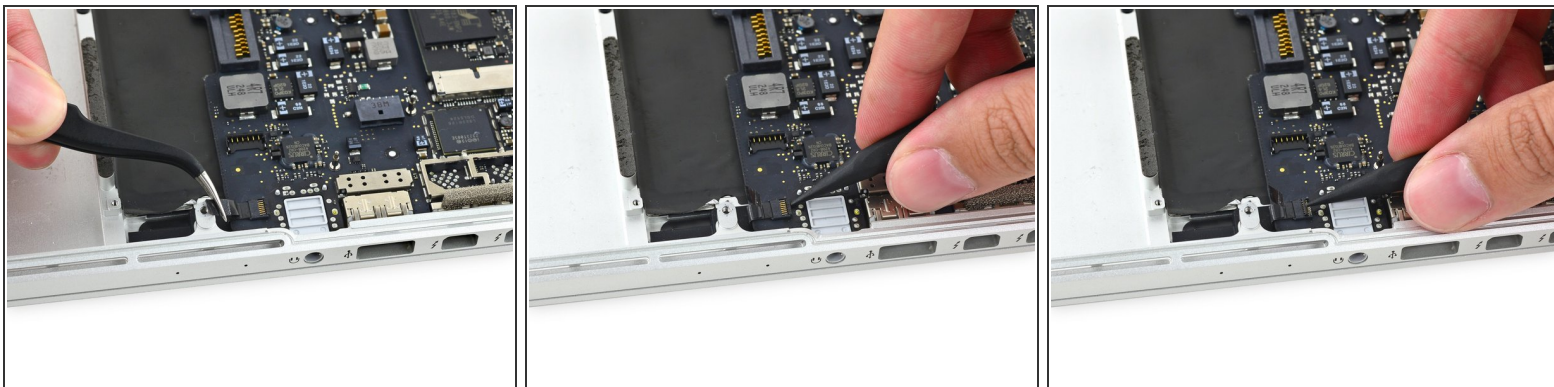
- Lift the I/O board cable end of the I/O board and pull toward the logic board to free the ports from the upper case.
 - Remove the I/O board.
- ☒ When reinstalling the I/O board, be sure to slide the USB ports' metal EMI fingers under the side of the case, not over.

Step 62



- Use the flat end of a spudger to disconnect the keyboard backlight cable and move it out of the way.

Step 63



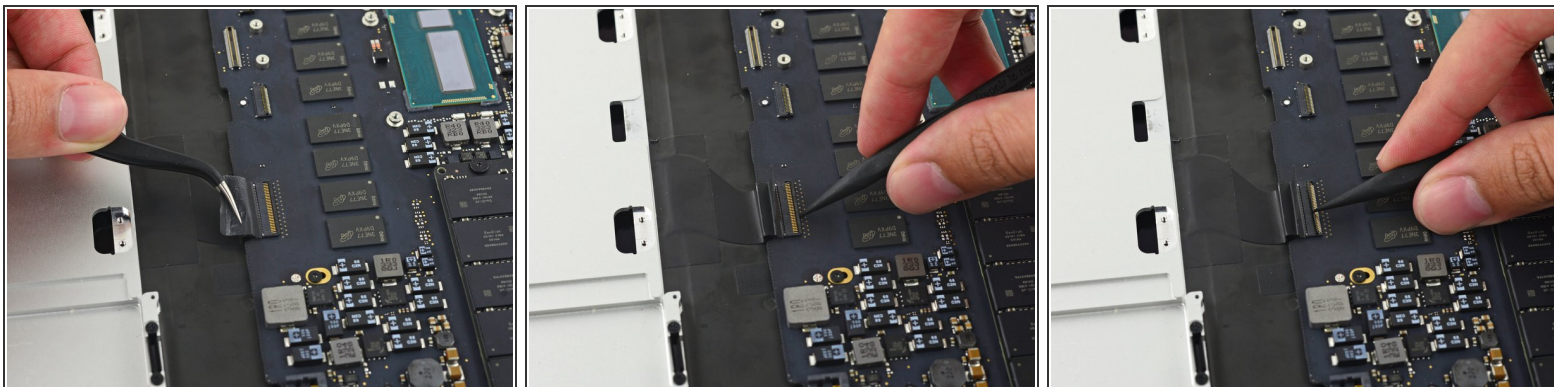
- ⓘ If necessary, peel back any tape covering the microphone cable ZIF connector.
- Use the tip of a spudger to flip the retaining tab on the microphone cable ZIF connector.

Step 64



- Pull the microphone cable straight out of its socket on the logic board.

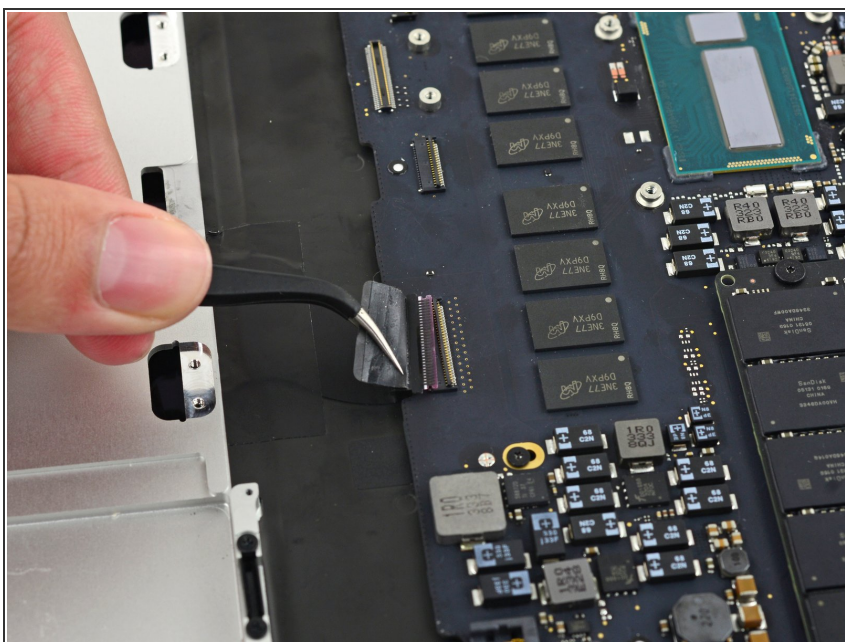
Step 65



 If necessary, peel back any tape covering the keyboard cable connector.

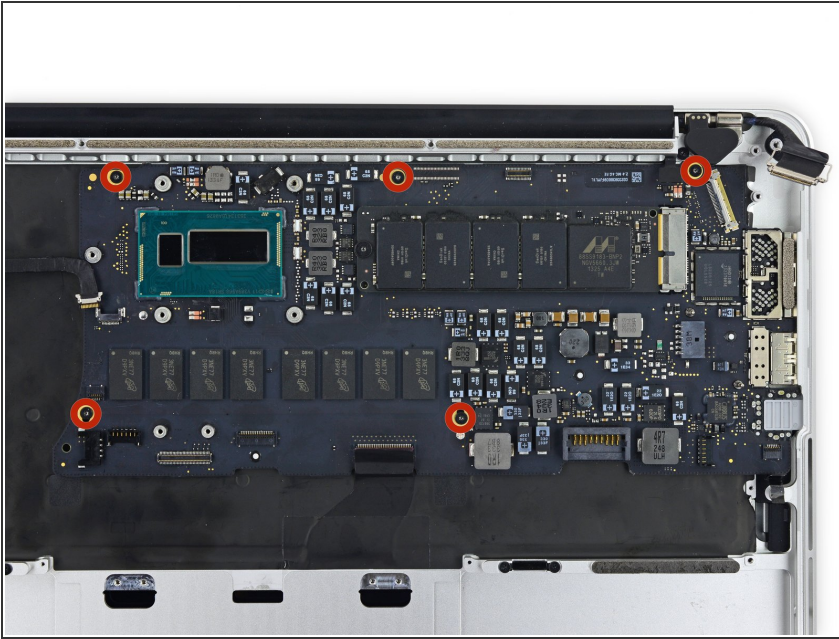
- Use the tip of a spudger to flip the retaining tab on the ZIF connector.

Step 66



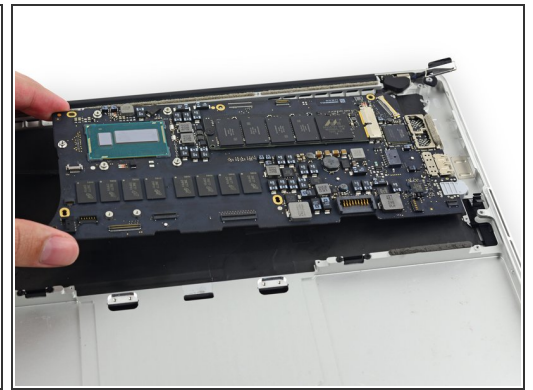
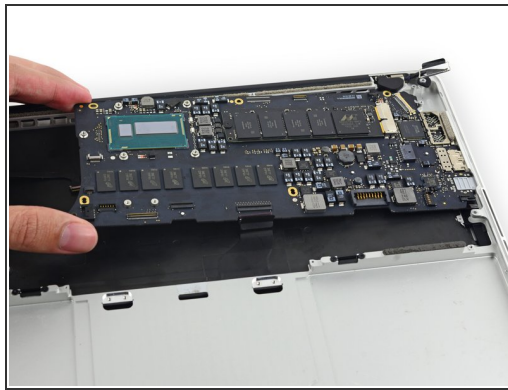
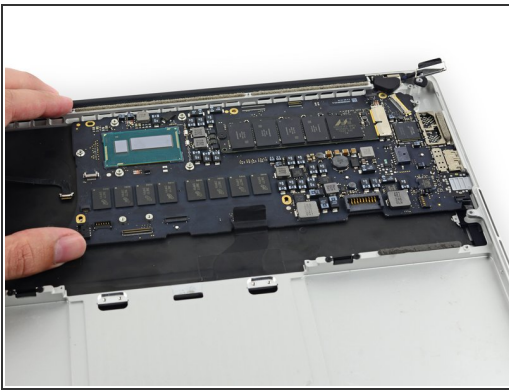
- Pull the keyboard cable straight out of its ZIF socket on the logic board.

Step 67



- Remove the five 3.5 mm T5 Torx screws securing the logic board to the upper case.
- ☑ When reassembling, install all five screws loosely, position the logic board, and then tighten evenly.

Step 68



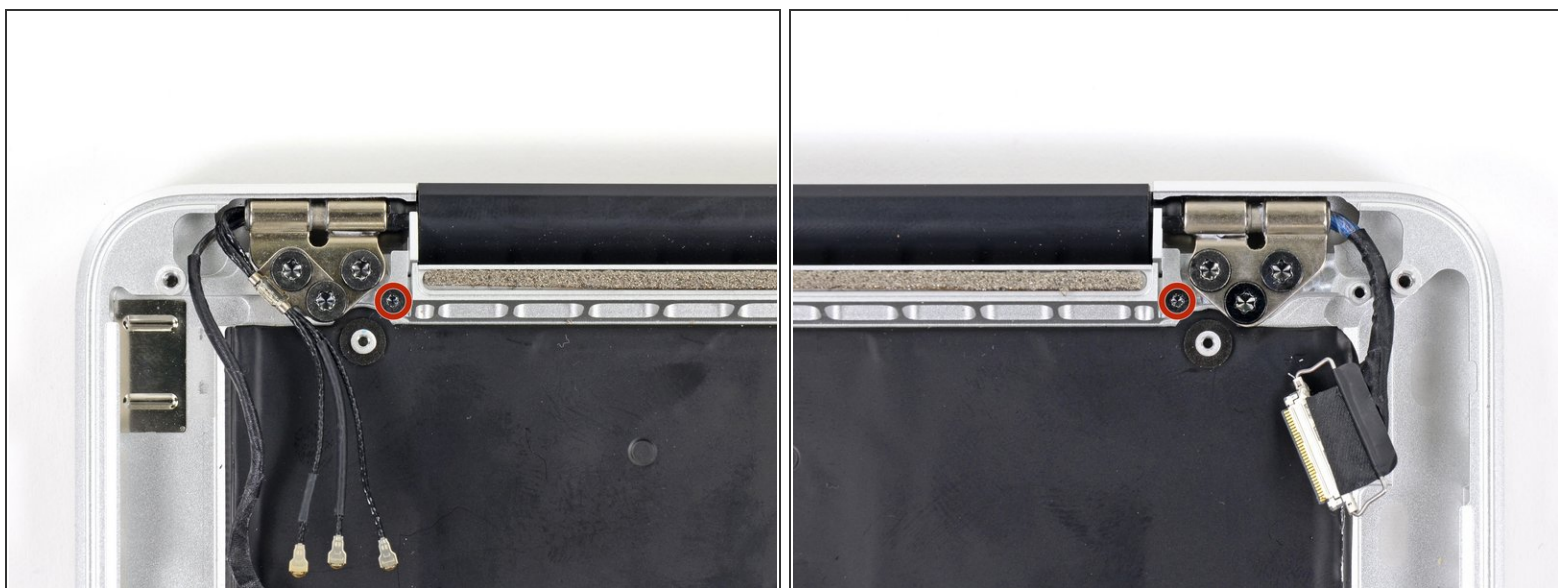
- Lift the processor end of the logic board up slightly and pull it toward the fan recess to free the ports from the edge of the upper case and remove the logic board.
- ☑ When reinstalling, make sure the keyboard, keyboard backlight, and microphone cables don't get trapped beneath the logic board.
- ☑ Also be sure to slide the ports' metal EMI fingers under the side of the case, not over.

Step 69



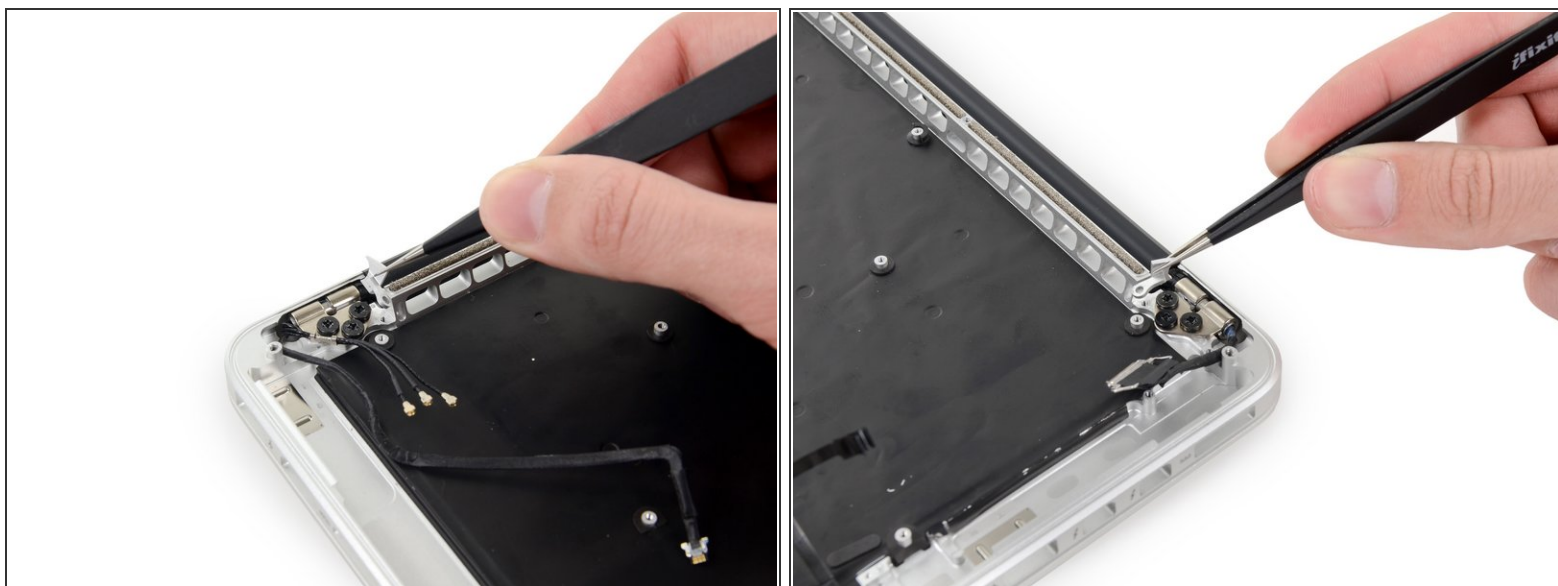
- Use a pair of tweezers to lift the rubber hinge covers up off the right and left display hinges.

Step 70



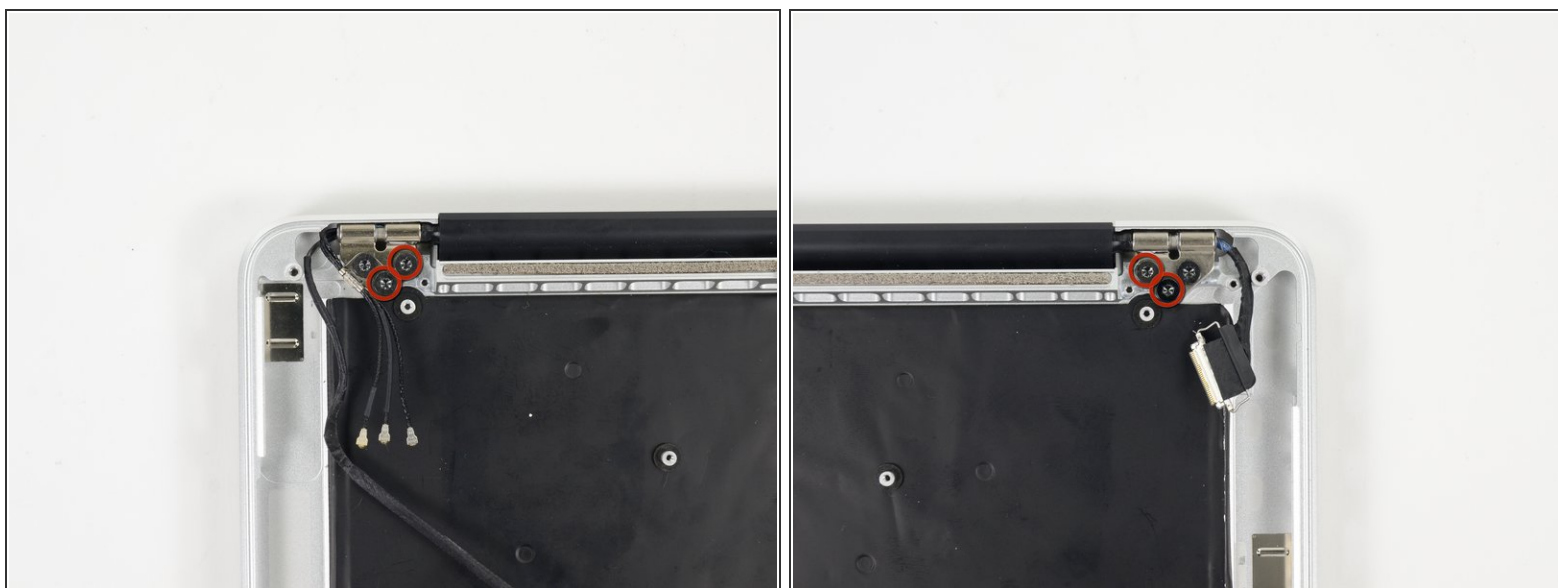
- Remove the 3.2 mm T5 Torx screws (one on each side) securing the aluminum hinge brackets to the upper case.

Step 71



- Use a pair of tweezers to lift aluminum hinge brackets off the right and left display hinges.



Step 72



- Remove the four inner 5.3 mm T8 Torx screws (two on each side) securing the display to the upper case.

Step 73



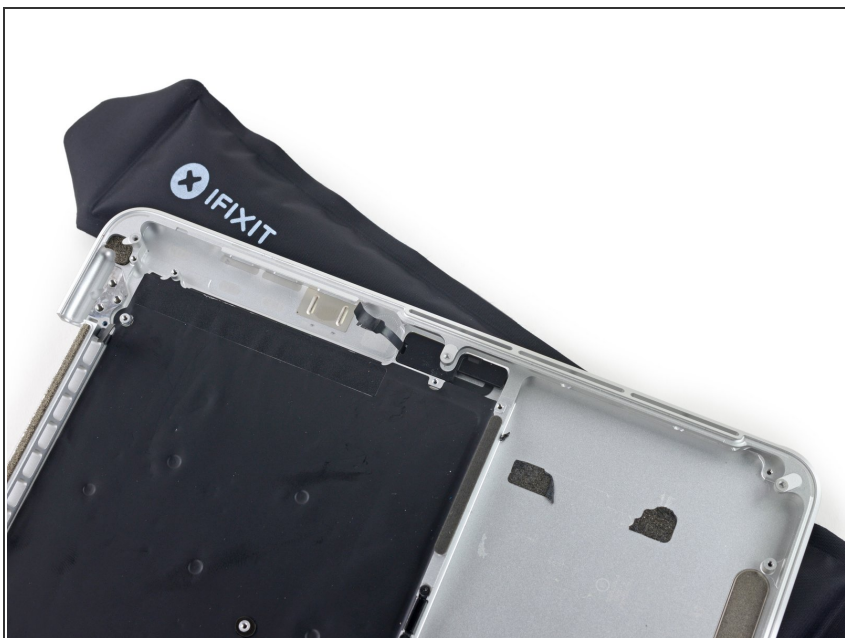
-  Open the MacBook Pro a little wider than 90 degrees, and place it on end, as shown.
- While holding the display and upper case together with your left hand, remove the remaining T8 Torx screw from the lower display bracket.
-  Be sure to hold the display and upper case together with your left hand. Failure to do so may cause the freed display/upper case to fall, potentially damaging each component.
- Remove the last remaining T8 Torx screw securing the display to the upper case.

Step 74



- Grip both halves of the device, one in each hand.
- Gently push forward on the bottom half of the device to detach it from the display assembly.
- Carefully set each component aside, making sure to set down the lower half keyboard-side down.

Step 75



- Place the MacBook on a heated iOpener for about a minute to soften the adhesive securing the dual microphone cable.

Step 76



- Insert the tip of a spudger under the rubber microphone cable cover to free it from the upper case.
- Remove the rubber microphone cable cover.

Step 77



- Insert the tip of a spudger under the connector end of the microphone ribbon cable and lift to peel that section up from the upper case.

Step 78



- Insert the tip of a spudger under the right-hand portion of the microphone ribbon cable and slide it toward the screw post to free it from the upper case.

Step 79



- Remove the microphone cable from the upper case.

To reassemble your device, follow these instructions in reverse order.