



MacBook Pro 13" Retina Display Late 2012 Battery Connector Replacement

Prereq only.

Written By: Walter Galan



INTRODUCTION

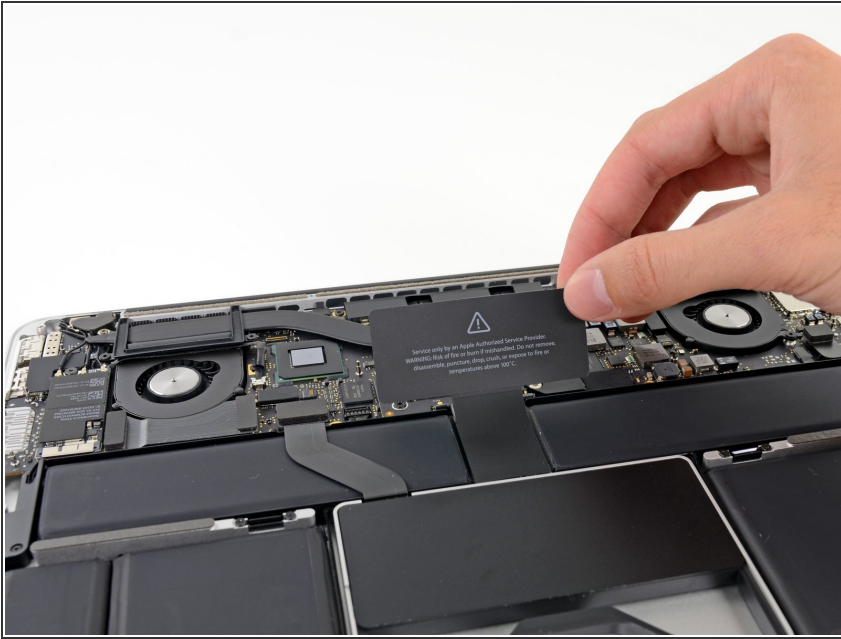
Prereq only.



TOOLS:

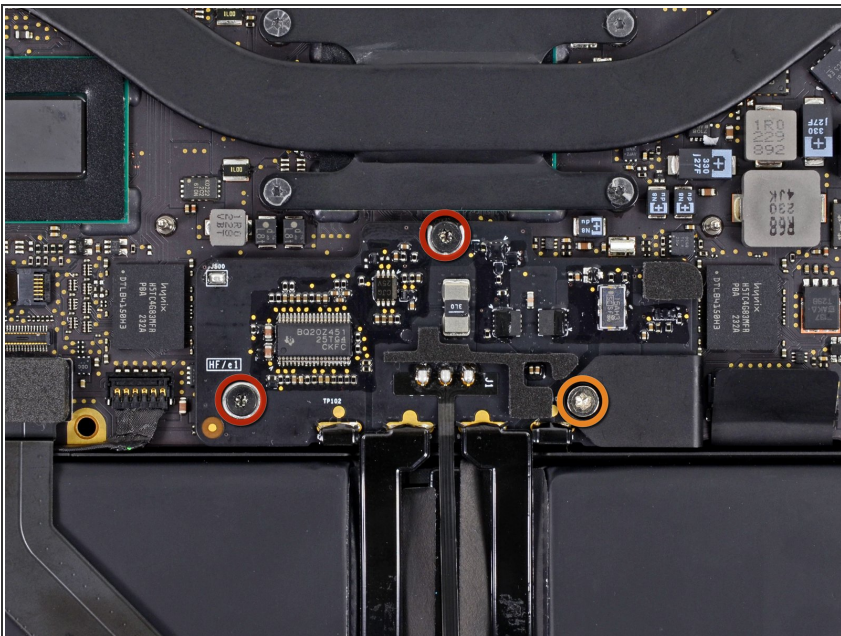
- [iFixit Opening Tools](#) (1)
 - [T6 Torx Screwdriver](#) (1)
 - [Tweezers](#) (1)
-

Step 1 — Battery Connector



- Remove the plastic cover adhered to the battery contact board.

Step 2



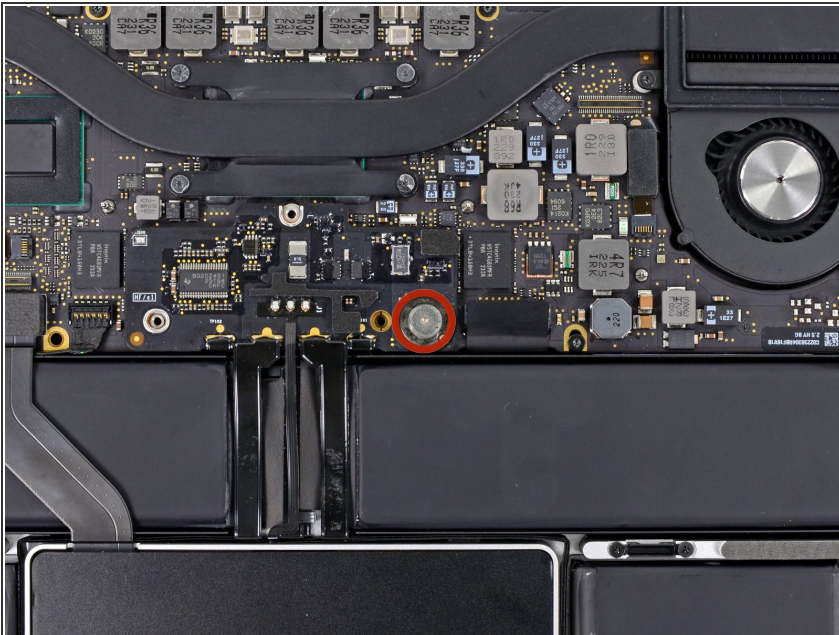
- Remove the following screws securing the battery connector board to the logic board:
 - Two 2.8 mm T6 Torx screws
 - One 7.0 mm T6 Torx shouldered screw

Step 3



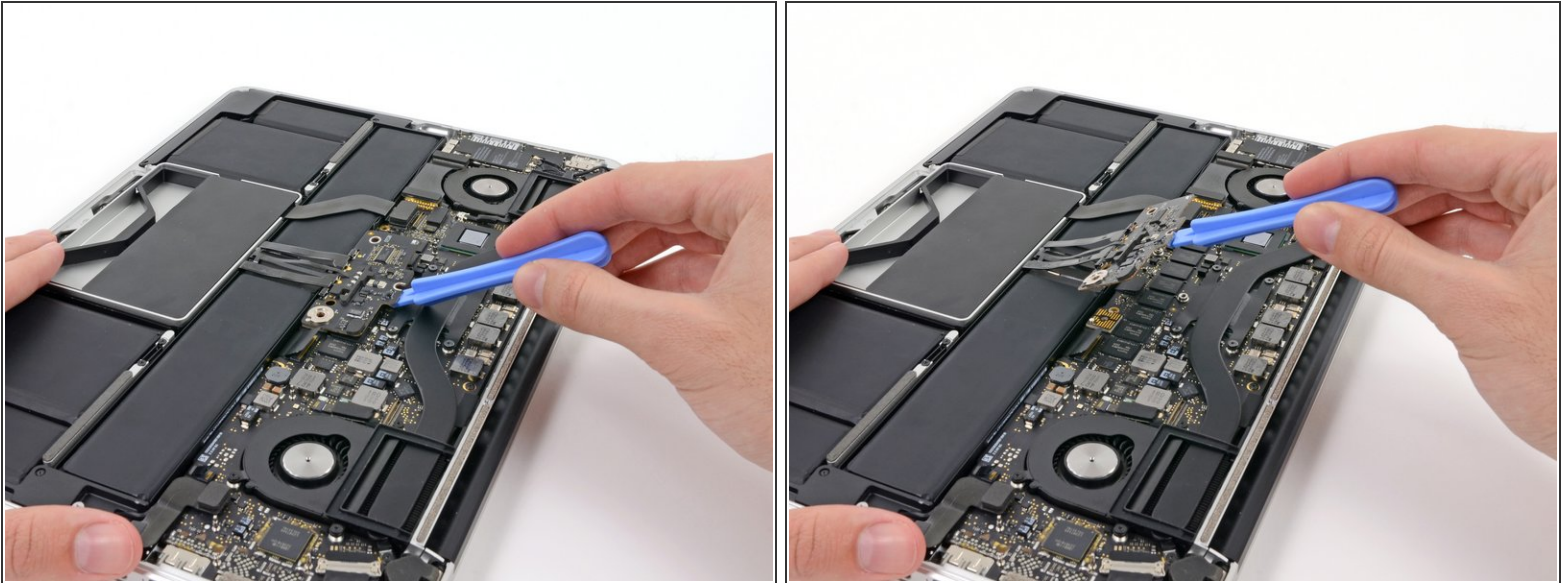
- Use tweezers to remove the small plastic cover located near the bottom right of the battery connector board.


Step 4



- Remove the wide head 6.4 mm T6 Torx screw securing the battery connector to the logic board assembly.

Step 5



- Carefully lift the battery connector board up off the logic board.
 - It is recommended to bend the battery cables just slightly, to keep the board suspended up above the logic board and out of the way.
-  Do not fold the board completely over, or crease the cables, as this may damage the battery.

To reassemble your device, follow these instructions in reverse order.