



MacBook Pro 13" Retina Display Late 2012 Teardown

Late 2012 MacBook Pro 13" with Retina display teardown. Torn down October 24, 2012.

Written By: David Hodson



INTRODUCTION

Apple just expanded their Retina family. The newest bundle of joy: a 13" MacBook Pro with Retina display. It's small, it's sleek, and all those pixels are pretty darn snazzy. What goes best with a new gadget? Yep, you guessed it: kittens.* So, for this teardown, we brought in the big guns.

Can't get enough teardowns...or kittens? Follow us on [Twitter](#), or check us out on [ye olde Facebook](#) to keep up with all the latest iFixit news.

*No kittens were harmed in the making of this teardown.



TOOLS:

- [MacBook Pro and Air 5-Point Pentalobe Screwdriver](#) (1)
 - [Tweezers](#) (1)
 - [Phillips #00 Screwdriver](#) (1)
 - [Spudger](#) (3)
 - [T5 Torx Screwdriver](#) (1)
 - [T6 Torx Screwdriver](#) (1)
 - [T8 Torx Screwdriver](#) (1)
-

Step 1 — MacBook Pro 13" Retina Display Late 2012 Teardown



- The 13" MacBook Pro has received the Retina display treatment! Let's see what it's packing.
 - 13.3" 2560x1600 pixel (227 ppi) Retina display
 - 2.5 GHz Intel Core i5 processor
 - 128 or 256 GB flash storage
 - 8 GB DDR3L onboard RAM
 - Thunderbolt, USB 3.0, and HDMI I/O
 - Intel HD Graphics 4000

Step 2



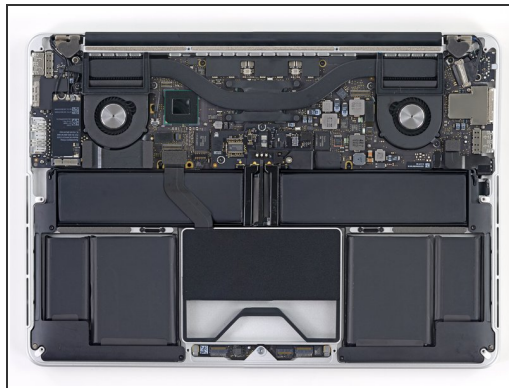
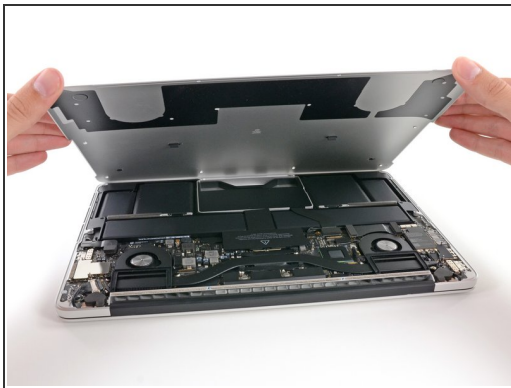
- We normally charge top dollar for pictures of kittens, but today you can have these wallpapers for the low, low price of \$free. They're the right resolution (aka 2560 x 1600) for your 13" MBP con Retina Display.
 - [Affectionate Kitteh](#)
 - [Ambivalent Kitteh](#)
 - [Mac OS X Snow Kitteh](#)
- Devices from bottom to top:
 - 13" MacBook Pro Early 2011
 - 13" MacBook Pro Retina Late 2012
 - 21-Day-Old Kitten Late 2012

Step 3



- This Retina MacBook Pro has the model number A1425. Does that model number look unfamiliar to you? Us too!
- Another new MacBook Pro Model number?! We haven't been this excited since the last time Apple gave out a new model number to [Big Brother Retina](#).
- Enough with the *completely redesigned* outside...let's get inside!

Step 4



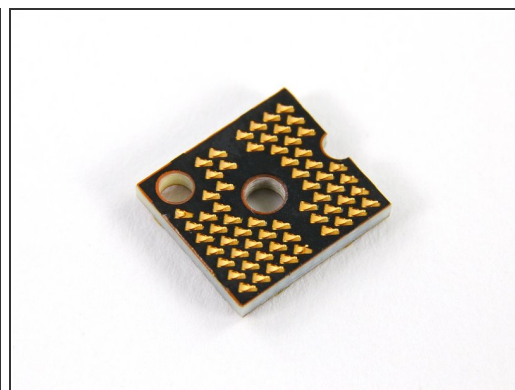
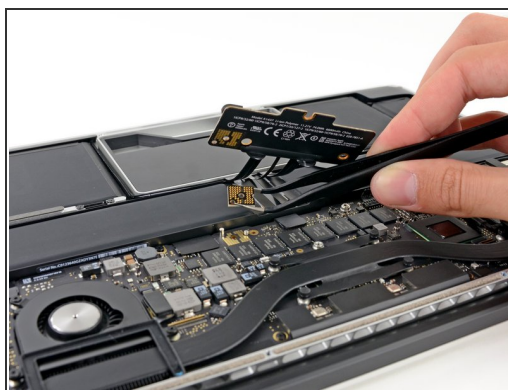
- We open it up to find...
 - ...a grumpy face?
- It's a [familiar face](#), though it seems to be missing some teeth. There is definitely a battery design change, specifically the migration of two battery cells off of the trackpad. We will examine this more later, but it appears that the trackpad will be a [little easier to replace this time around](#).
- Grumpy kitten glares back at the grumpy-faced MacBook Pro Retina, likely reminiscing on [Retina displays past](#).

Step 5



- *Service only by an Apple Cert*— ya, we've seen it [again](#), [and again](#), [and again](#).
- Just as we've said time after time, [we have the right to remove 'Do Not Remove' stickers](#).

Step 6



- As always, we start by disconnecting the battery, a simple task that requires no more than releasing a conn—wait, what is this?
- Instead of the good ol' run-of-the-mill battery connector that we've seen in most other Apple laptops, the battery is connected using several screws that hold a connector board in place.
- This little PCB serves only as a bridge between the battery control board and the logic board.
 - ...weird?

Step 7



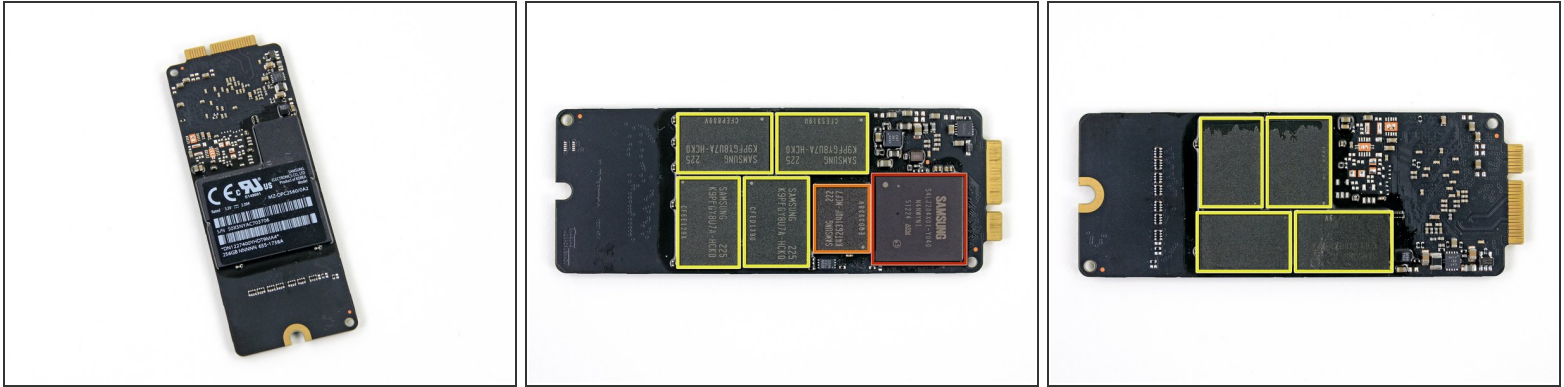
- At first we thought we found some kitten fuzz, but it turns out that Apple glued in a small piece of steel-wool-like metal on top of two of the speaker screws.
- Why, you ask?
- We don't know, but we have some hypotheses:
 - Grounding?
 - Noise reduction?
 - Tamper-evident seals?

Step 8



- The most striking layout change resulting from the shrink from a 15" to 13" form factor is the rearranged battery cells. This allowed Apple's designers to cleverly tuck the SSD away underneath the trackpad assembly.
- The empty space next to the SSD is very un-Apple. It's not like them to leave big air gaps in their newest, sleekest designs.
- Our first thought was that a standard 2.5" laptop drive might fit in this space, and it almost looks like this little nook was designed with that in mind.
- Our 9.5mm Crucial SSD didn't allow the bottom cover to be closed, but just by a smidge. We'll see if a 7 mm or 5 mm super-slim hard drive could be incorporated into the space.

Step 9



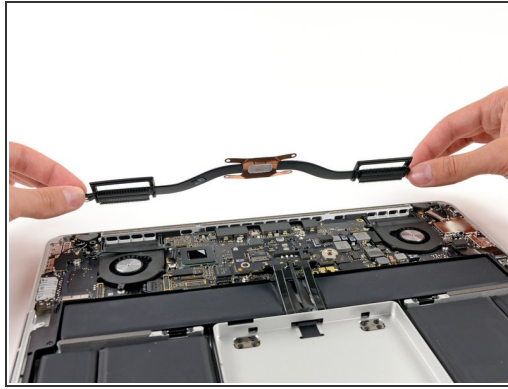
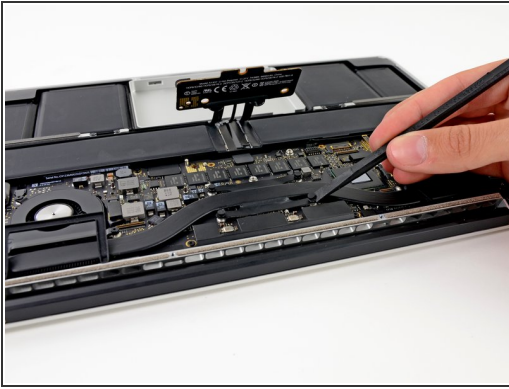
- Let's take a closer look at the 256 GB SSD that came in our MacBook Pro.
- It's a Samsung MZ-DPC2560/0A2 unit, rated at 3.3 volts and 2.39 amps. The serial number reads S0X5NYAC703706.
 - Samsung S4LJ204X01-Y040
 - Samsung K4T2G31QF-MCF7
 - Samsung K9FGY8UA7A-HCKO 32 GB NAND flash (8 x 32 GB = 256 GB)

Step 10



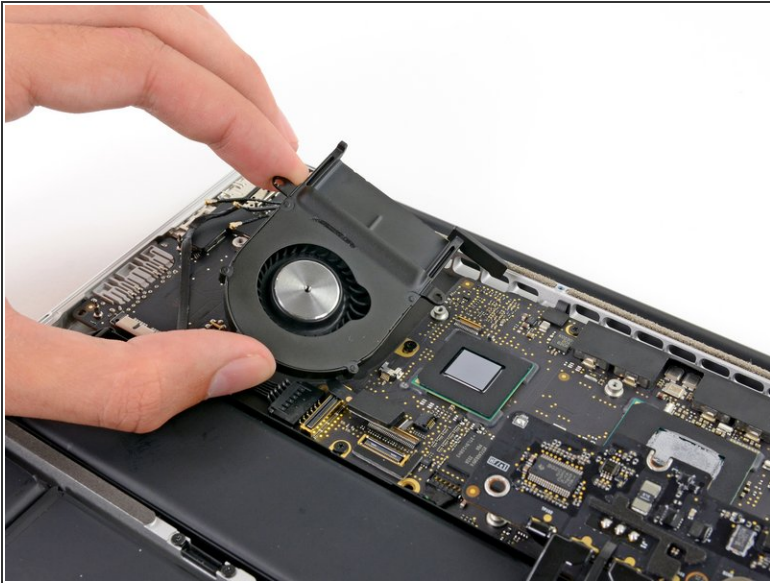
- Out comes the AirPort card. The card is now placed outboard from the right fan, and is the exact same model as found in the [15" MBPr](#) (model number BCM94331CSAX).
- The AirPort card may be the same as our last Retina teardown, but do you know what's different about this teardown?
 - Kittens, that's what.

Step 11



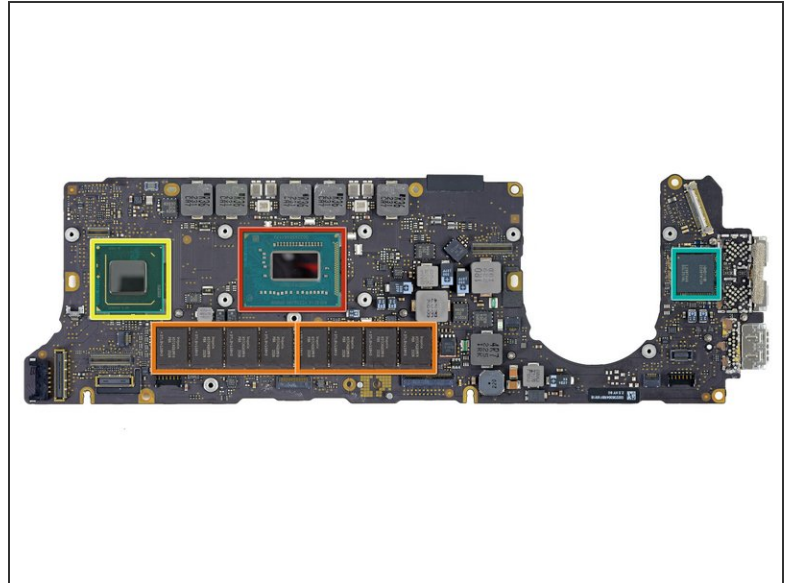
- ♪ It's gettin' hot in herre (so hot), so take off all your heat sinks. ♪
- All one of them, that is! The heat sink has been slightly scaled down to fit the smaller 13" Retina display, but the design looks very [similar to its predecessor](#), including the two rubber heat sink covers.

Step 12



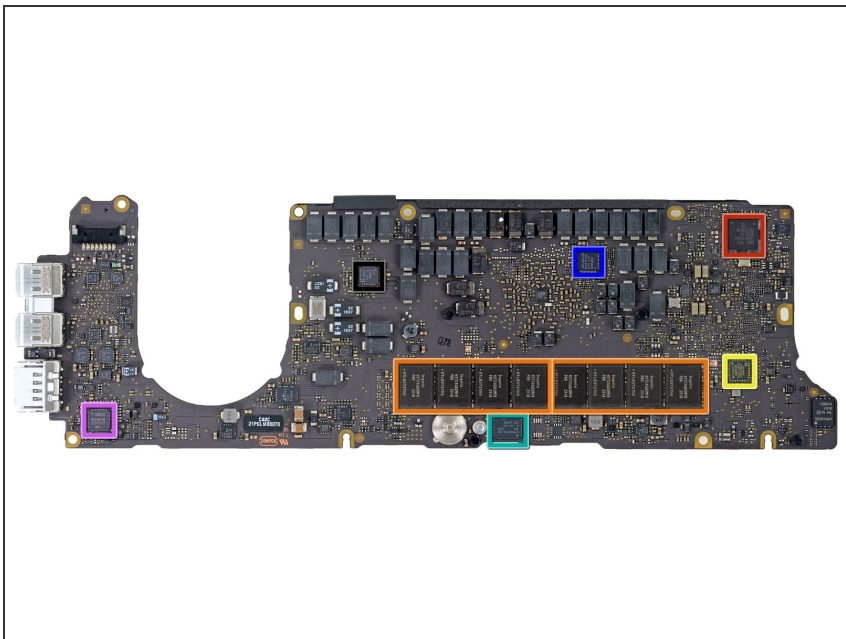
- These fans are [great](#). More specifically, their asymmetrical blade spacing is great at breaking up annoying air patterns that symmetrically-spaced fan blades might generate. This provides users with quieter fans.
- They are probably pretty good at cooling the computer down, too.
- While these fans are pretty cool, they can't be removed without first taking out the heat sink, which means you'll have to bust out your [Arctic Silver](#) in order to perform the job properly.

Step 13



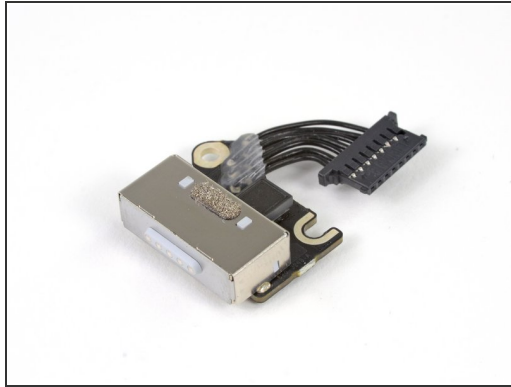
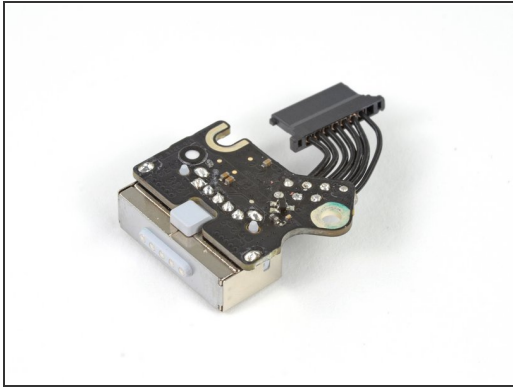
- And just like that, out comes the logic board.
- Front side of the logic board:
 - Intel [Core i5-3210M](#) 2.5 GHz processor (Intel HD Graphics 4000 and Turbo Boost up to 3.10 GHz)
 - Hynix [H5TC4G83MFR](#) DDR3L SDRAM (8x4 Gb front and back for a total of 64 Gb or 8 GB)
 - Intel [BD82QS77](#) platform controller hub
 - Intel DSL3510L Thunderbolt controller

Step 14



- Here's a look at the flipside:
 - Texas Instruments [Stellaris LM4FS1AH](#) microcontroller with integrated ARM core
 - Hynix [H5TC4G83MFR](#) DDR3L SDRAM
 - SMSC [USB2512B](#) USB 2.0 Hub Controller
 - Cypress Semiconductor [CY8C24794-24L](#) programmable SoC
 - Maxim MAX15119 Apple-specific IMVP7 CPU/GPU power controller
 - Cirrus Audio 4206BCNZ audio controller
- Texas Instruments TPS 51980

Step 15



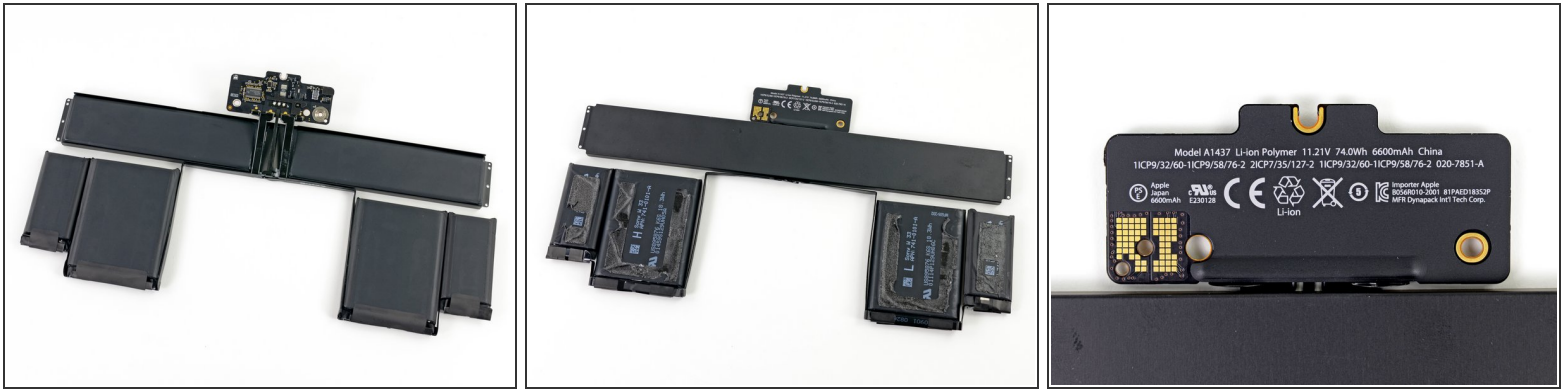
- Apple has been on a roll with new I/O connectors lately. We first saw MagSafe 2 in the MacBook Air and Retina models released this summer, and now their mobile devices have ditched the 30-pin dock connector in favor of the [Lightning](#) connector.
- It's only a matter of time until Apple decides to replace the MagSafe 2 connector with the Kitten connector.

Step 16



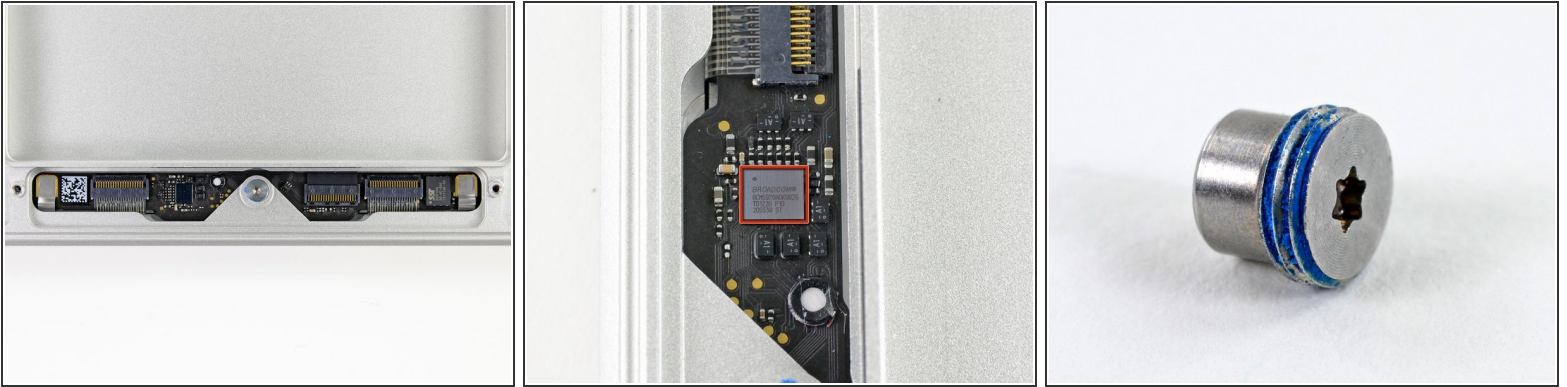
- Okay, deep breath. We are going to attempt to remove the battery.
 - Six cells stand between us and the upper case.
- Despite what happened [last time](#), we are determined to get the battery out.
- This time we're excited to find two of the six cells in a metal tray held in with screws and no adhesive. Barely started and already 1/3 done!
- Things slow down when we get to the outer cells and start slowly spudgering under the edges. Listening for the snap crackle & pop of breaking adhesive, we cautiously push forward until all six cells are free.

Step 17



- It was a slow and tedious process, but we removed the battery—sans puncture.
- The task took us roughly 15 minutes to complete, without the use of a heat gun. All we needed was a Torx screwdriver and three spudgers.
- In contrast, it took us three attempts to successfully remove the 15" Retina's battery without puncturing it, and the third attempt took over half an hour to perform.
 - Yet, EPEAT lab investigators [reported](#) the time required for the MacBook Pro 15" Retina battery removal was under 2.5 minutes, cited that the operation could be conducted “easily and safely,” and gave the laptop its Gold rating.
 - We certainly [disagreed](#) with that notion, given it was the [least repairable](#) computer we've ever encountered.
- The 13" Retina battery is a step in the right direction towards recyclability and repairability, but it's still a far cry from the no-adhesive MacBook Pro batteries of yesteryear.

Step 18



- The trackpad board contains several connectors and two prominent ICs:
 - Silicon Storage Technology [SST25VF020](#) 2 Mbit SPI Serial Flash
 - ⓘ Up until now, we haven't noticed the inclusion of flash memory on the trackpad. We don't know why a trackpad would require flash memory. However it seems that it was also included in the [MacBook Pro 15" Retina display trackpad](#).
 - Broadcom [BCM5976](#) touchscreen controller (as found in the [iPhone 5](#).)
- What a funky looking trackpad set screw. This standoff screw is much bigger than those found in previous generations, and is held in with threadlocker.

Step 19



- We are so excited to see the trackpad come out, and you should be too!
- Just five screws keep the trackpad in place. You can actually replace it if it breaks, which is pretty much impossible on the 15" model—it's covered by the battery.

Step 20



- The Retina display comes out after removing a few Torx screws.
- We did not attempt to separate the display from the glass, seeing as how the whole enchilada is fused together. But if you are curious, take a look at our [Retina display teardown](#) for the full rundown.
- After all is said and done, the only thing that remains is the upper case.

Step 21



- We promised you kitties and we're not ones to disappoint our loyal fans.
- A few tips regarding kitties:
 - [Follow the proper kitty petting procedure.](#)
 - No matter what, your kitty will always [hate Mondays](#).
 - If you fuse your kitty with a cherry pop tart, and launch it into space, the results will be [spectacular](#).
 - Kitties like [chemistry](#).
 - Never trust a [grin without a kitty](#).
- In the words of the great [Bob Barker](#), "help control the pet population. Have your pet spayed or neutered. Goodbye everybody!"

Step 22



- MacBook Pro 13" Retina Display Repairability: **2 out of 10** (10 is easiest to repair)
- There appears to be enough space to fit a regular 5 mm or 7 mm 2.5" laptop drive, but a custom cable will need to be developed.
- The battery is still glued into the laptop's top case, but it's slightly less difficult to remove compared to the [15" model](#).
- Proprietary pentalobe screws prevent you from gaining access to anything inside.
- The RAM is surface-mount soldered to the logic board, so no upgrade is possible. It will forever have 8 GB of RAM.
- The display assembly is almost impossible to take apart. If anything ever fails inside the display, you'll need to replace the display as a whole.

To reassemble your device, follow these instructions in reverse order.