



MacBook Pro 13" Retina Display Late 2012

iSight Camera Cable Replacement

Prereq for the logic board.

Written By: Walter Galan



INTRODUCTION

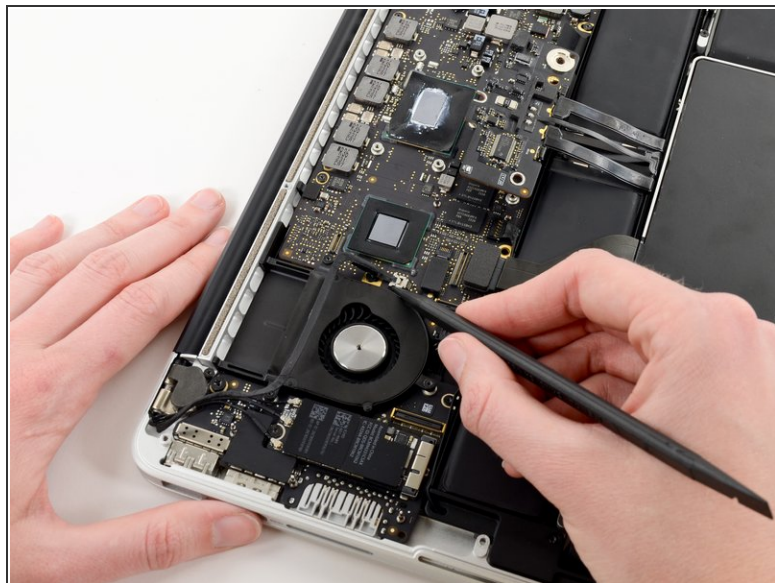
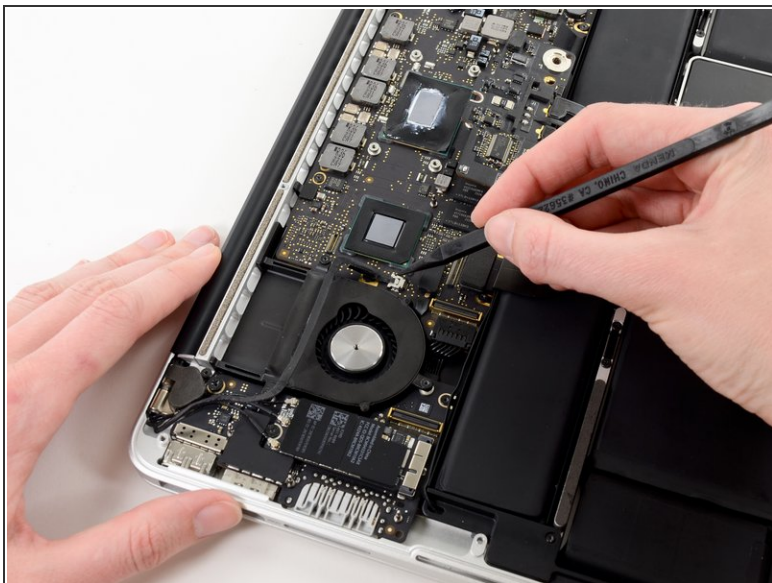
Prereq for the logic board.



TOOLS:

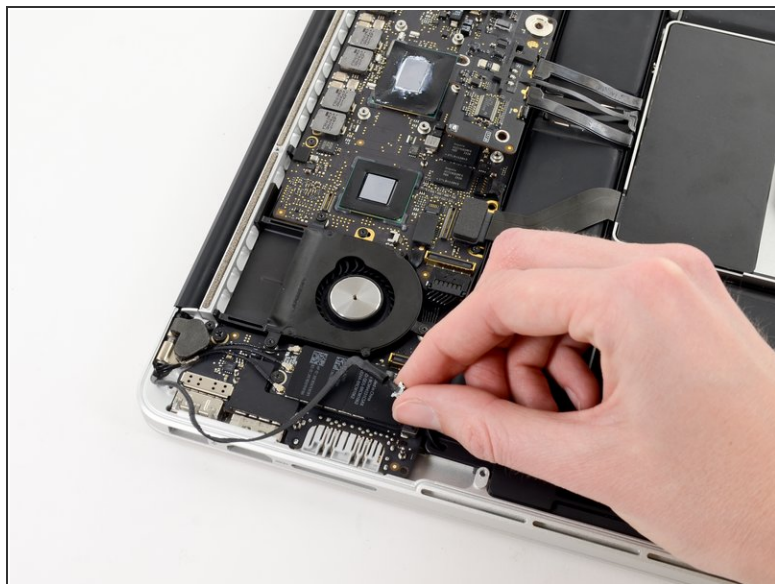
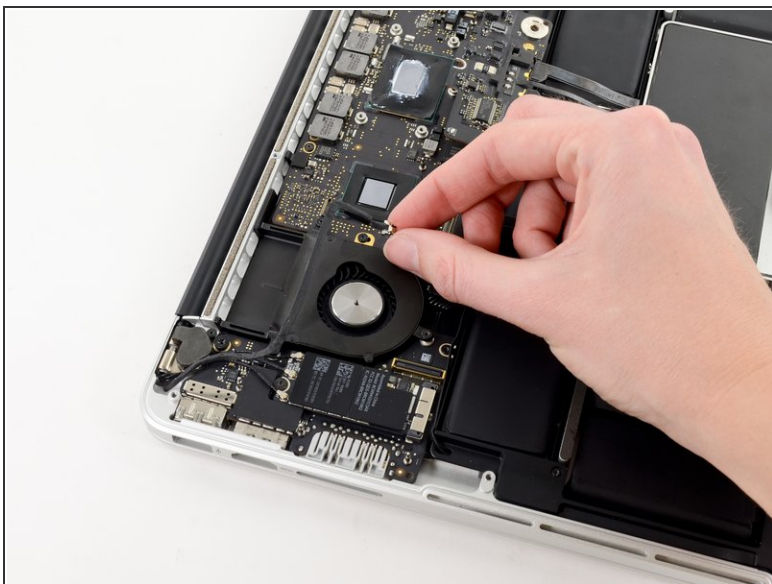
- [Spudger](#) (1)
-

Step 1 — iSight Camera Cable



- Use the tip of a spudger to push the iSight camera cable connector straight away from its socket on the logic board.
- ⓘ It is recommended to carefully push on both sides of the connector to "walk" it out of its socket.

Step 2



- Move the iSight camera cable aside.

To reassemble your device, follow these instructions in reverse order.