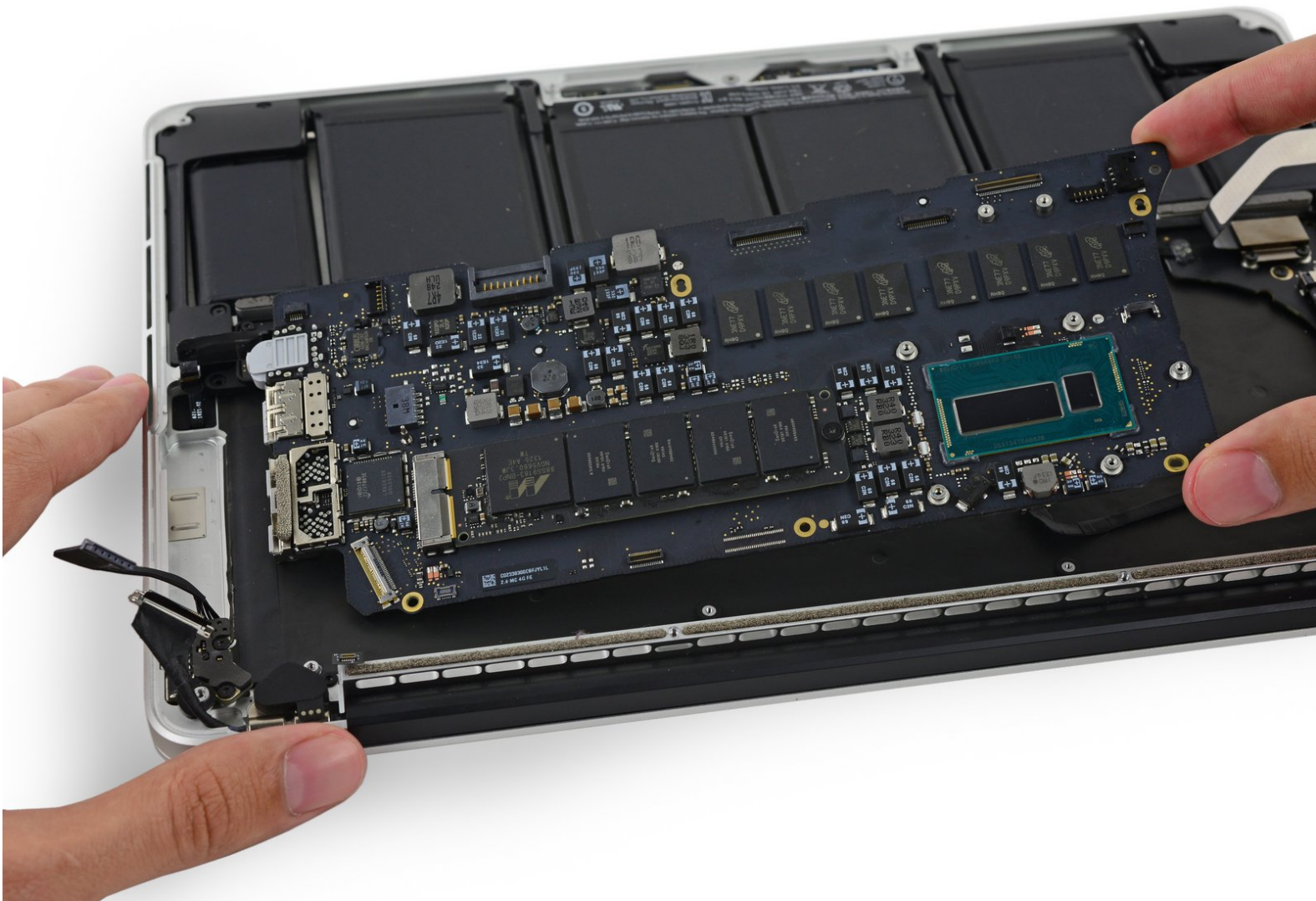




MacBook Pro 13" Retina Display Late 2013 Logic Board Assembly Replacement

Prereq to remove the logic board

Written By: Sam Goldheart



INTRODUCTION

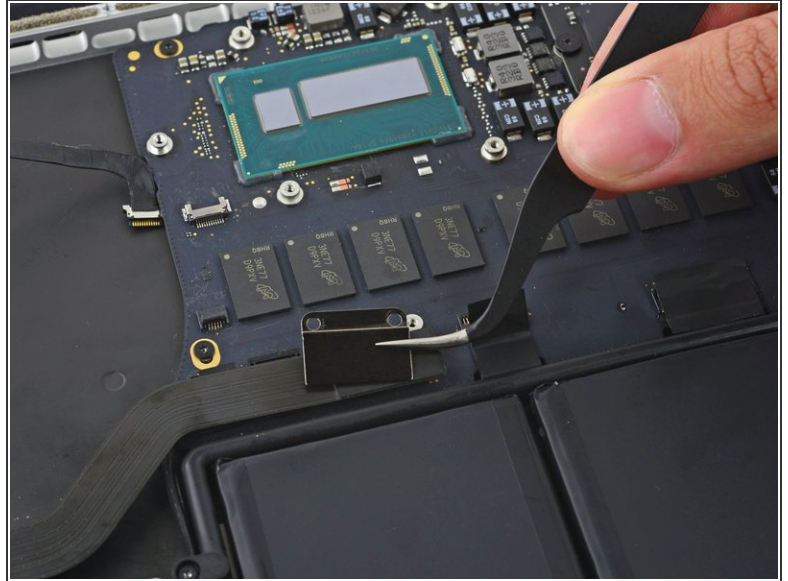
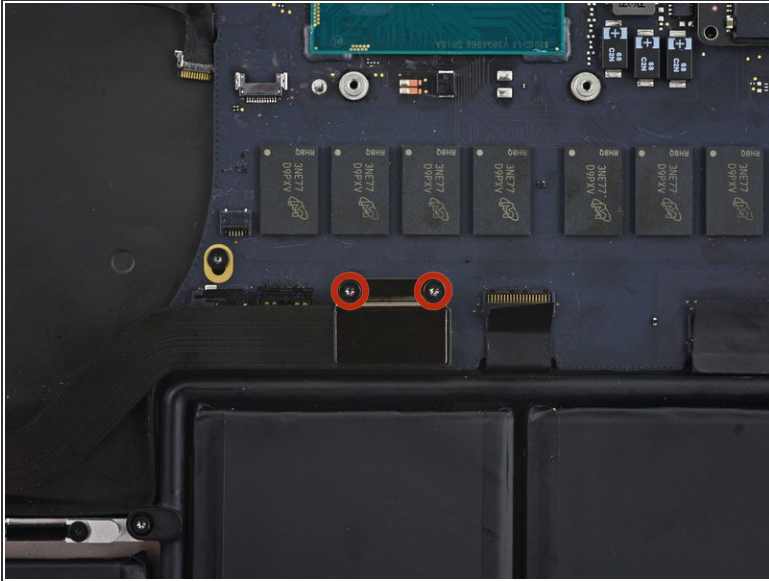
Prereq to remove the logic board



TOOLS:

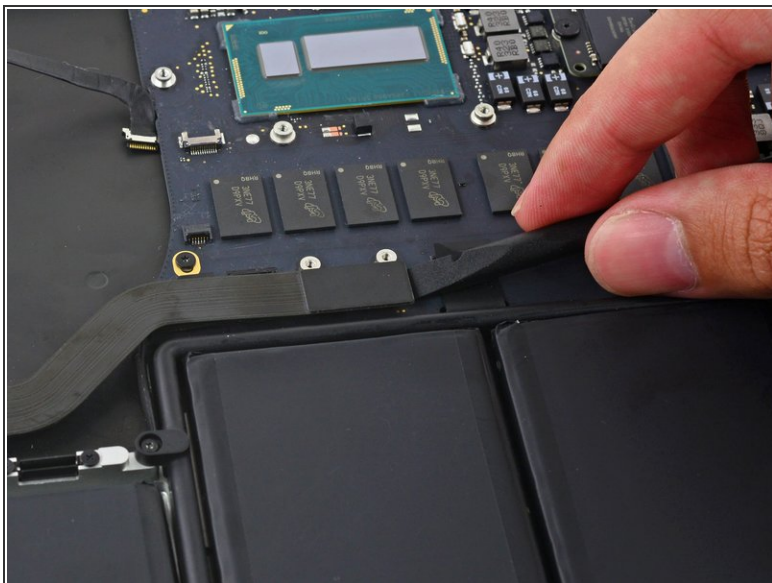
- [T5 Torx Screwdriver](#) (1)
 - [Spudger](#) (1)
 - [Tweezers](#) (1)
-

Step 1 — Logic Board Assembly



- Remove the two 2.1 mm T5 Torx screws securing the I/O board cable bracket to the logic board.
- Remove the I/O board cable bracket.

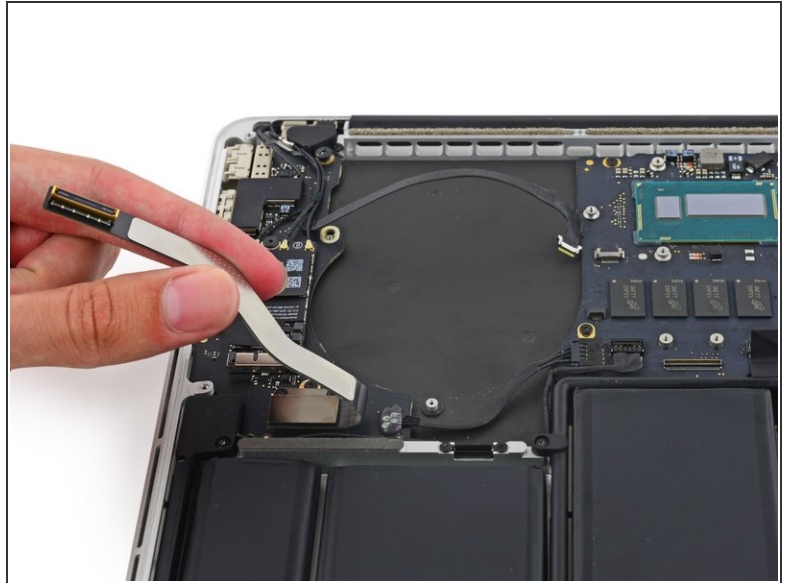
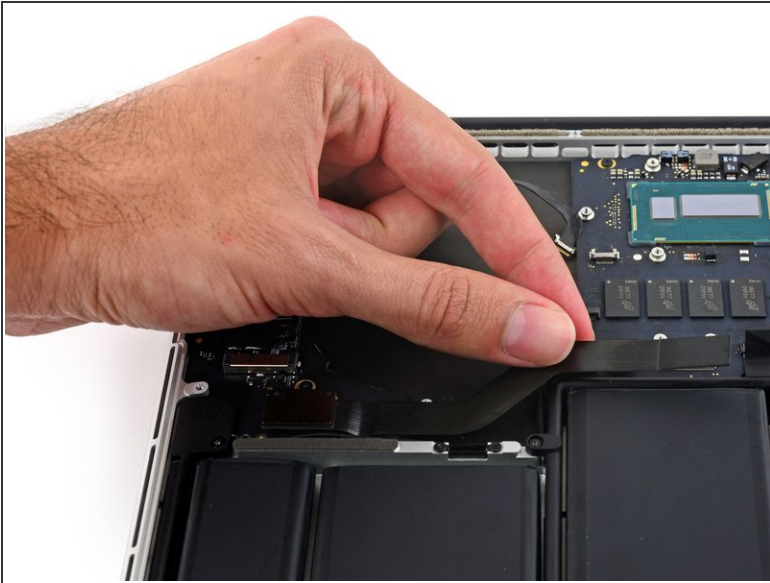
Step 2



- Use the flat end of a spudger to pop the I/O board connector straight up off its socket on the logic board.

⚠ Be careful to only pry up on the I/O board cable, **not** on the socket itself or you risk damaging your logic board.

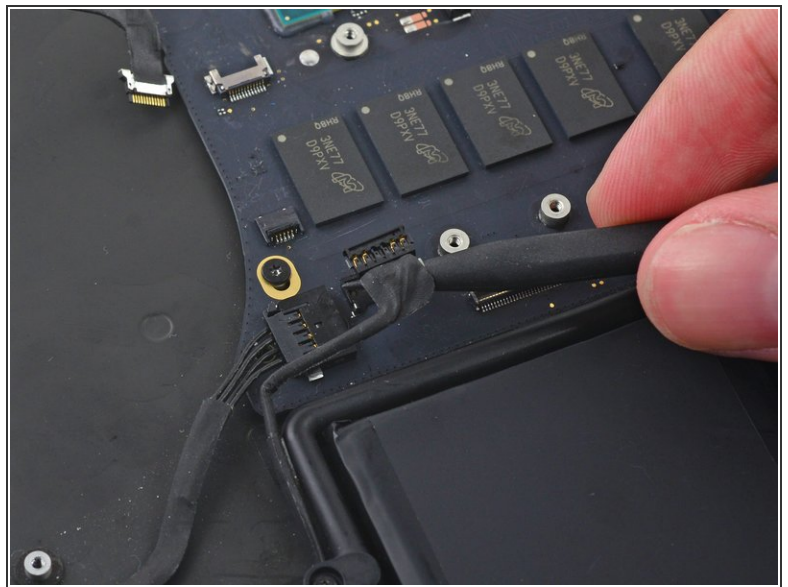
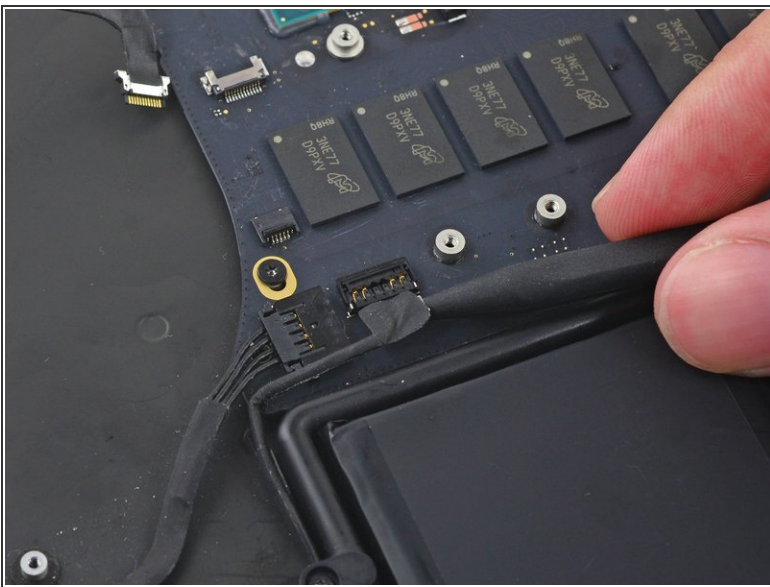
Step 3



- Lift the logic board end of the I/O board cable straight up to bend it out of the way.

⚠ To avoid damage to the cable, fold only at the bend in the I/O board end of the cable.

Step 4



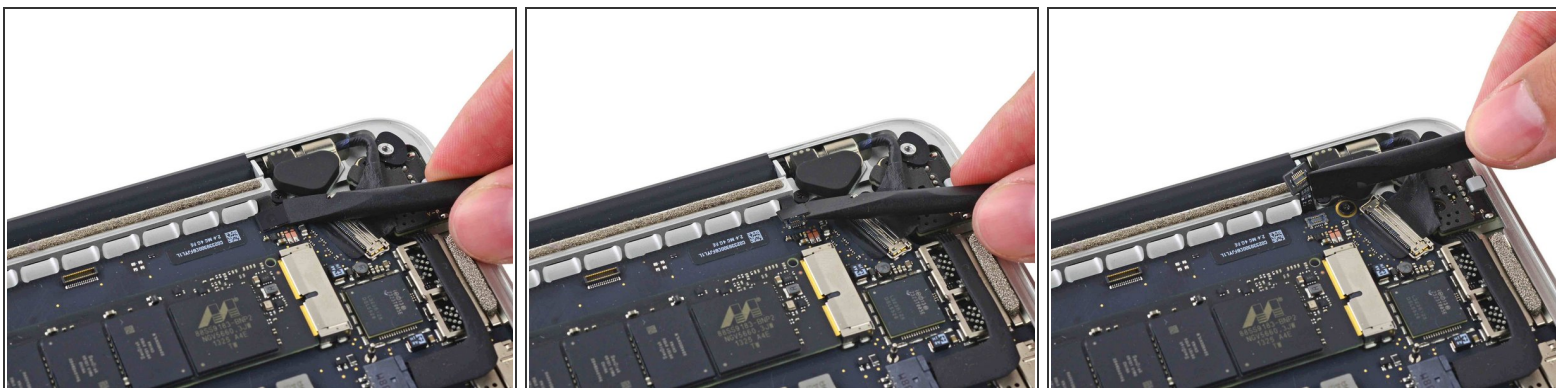
- Use the tip of a spudger to lift the right speaker connector straight up out of its socket on the logic board.

Step 5



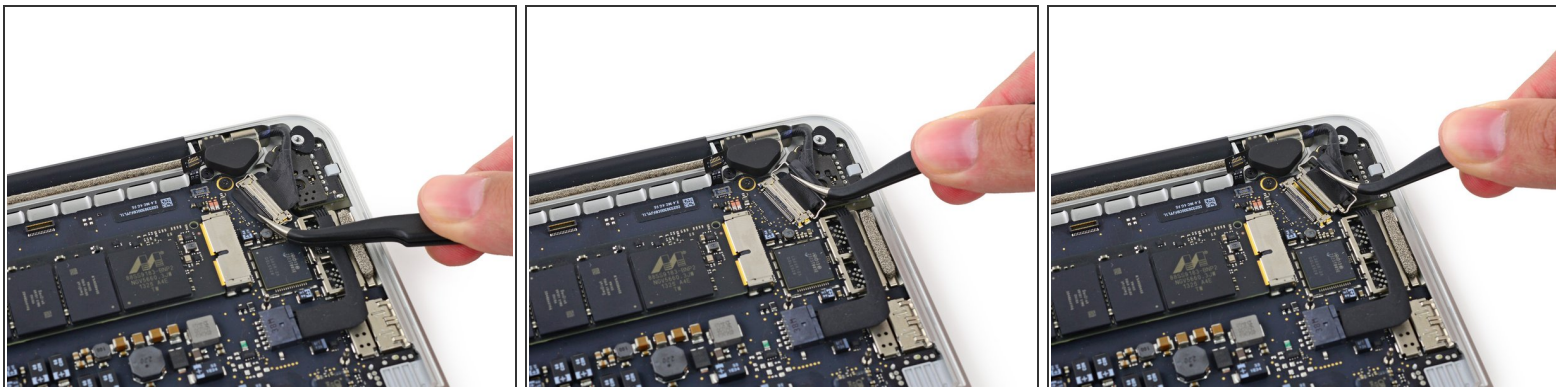
- With the tip of a spudger, push on either side of the I/O board connector to *walk* it out of its socket on the logic board.

Step 6



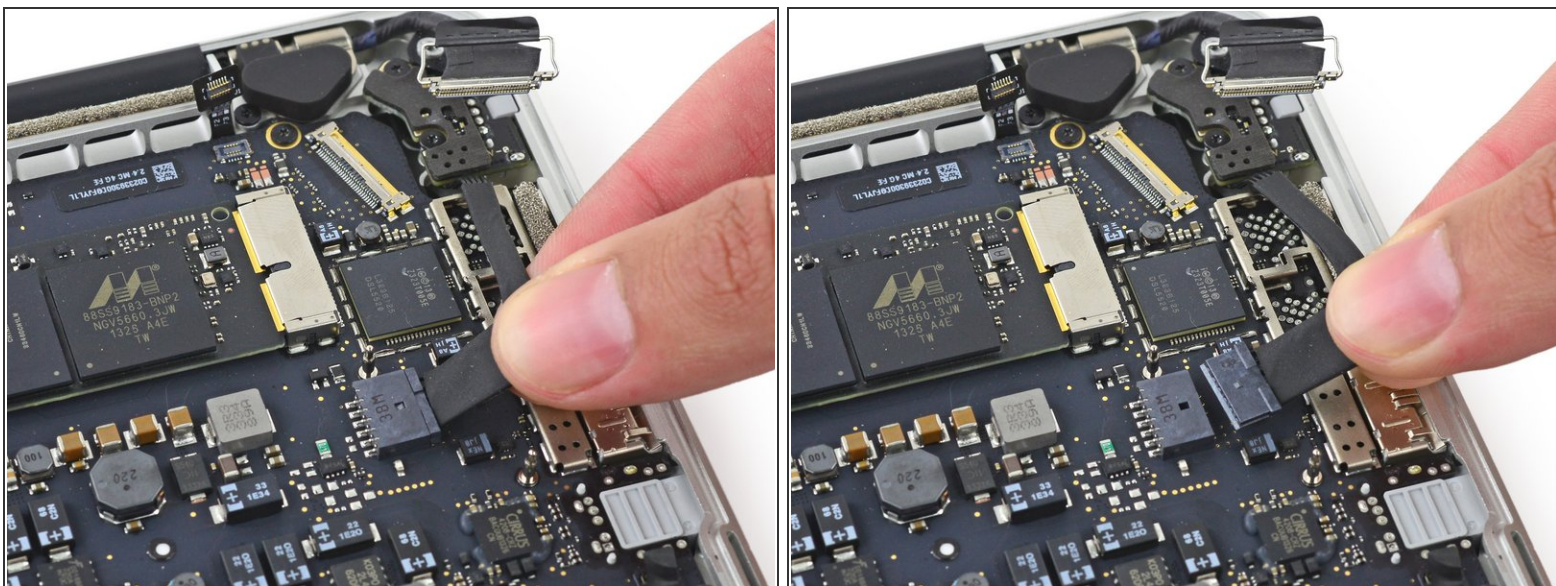
- Use the flat end of a spudger to disconnect the keyboard backlight cable and bend it up out of the way of the logic board.

Step 7



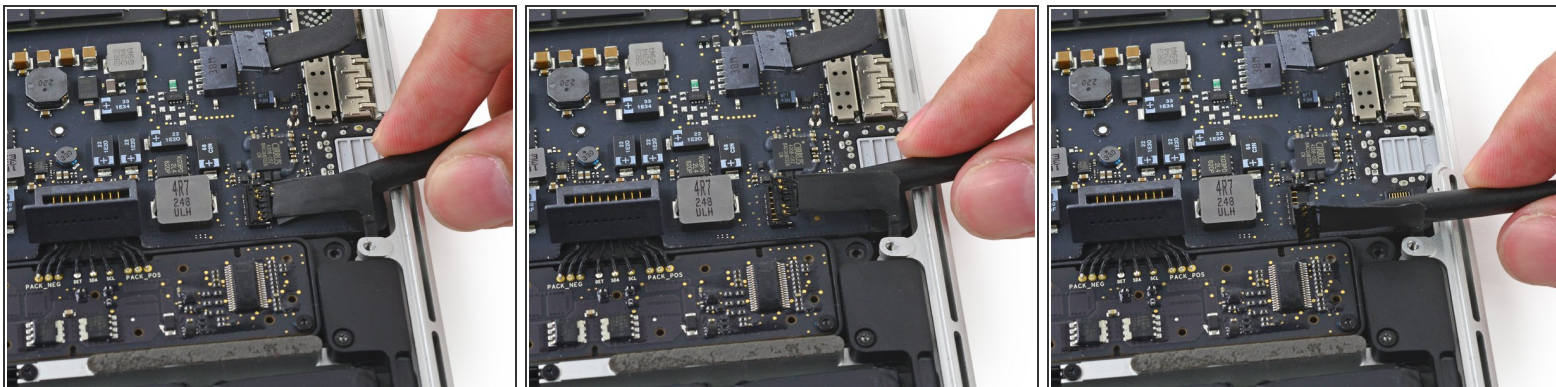
- Grab the black plastic tab to flip the display cable connector open and pull it straight out of its socket on the logic board.

Step 8



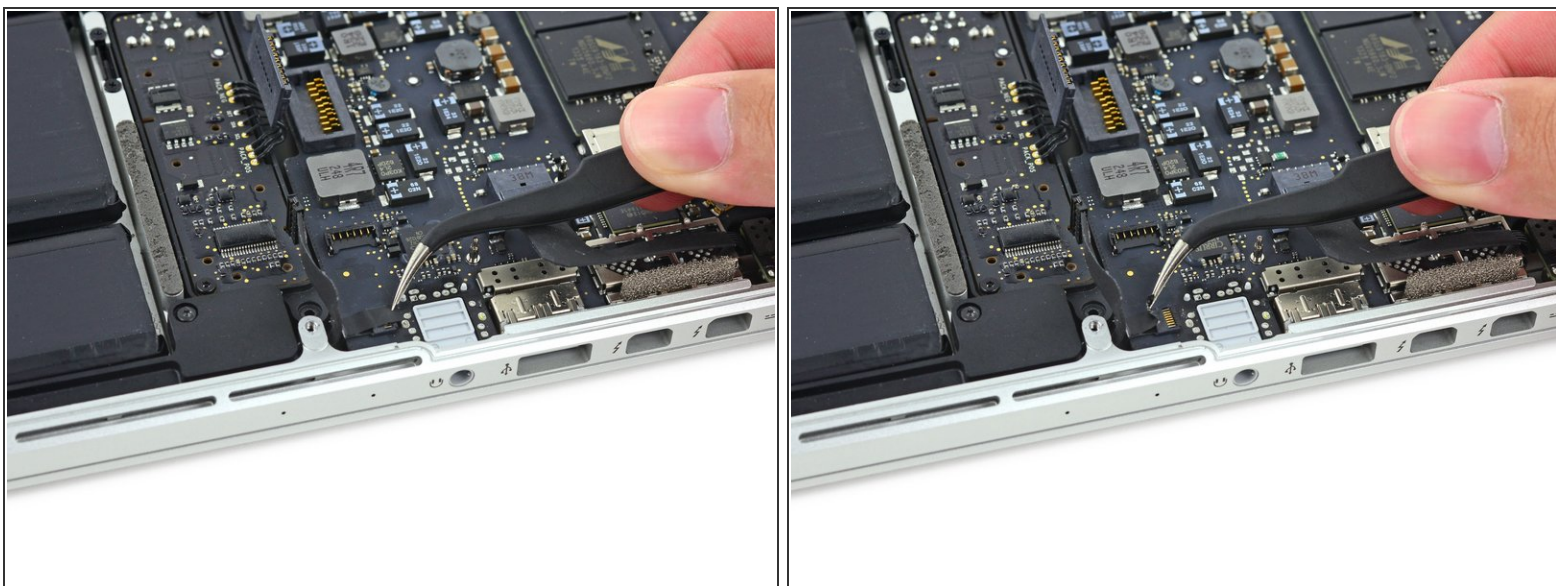
- Carefully pull the DC-In board connector straight out of its socket on the logic board.

Step 9



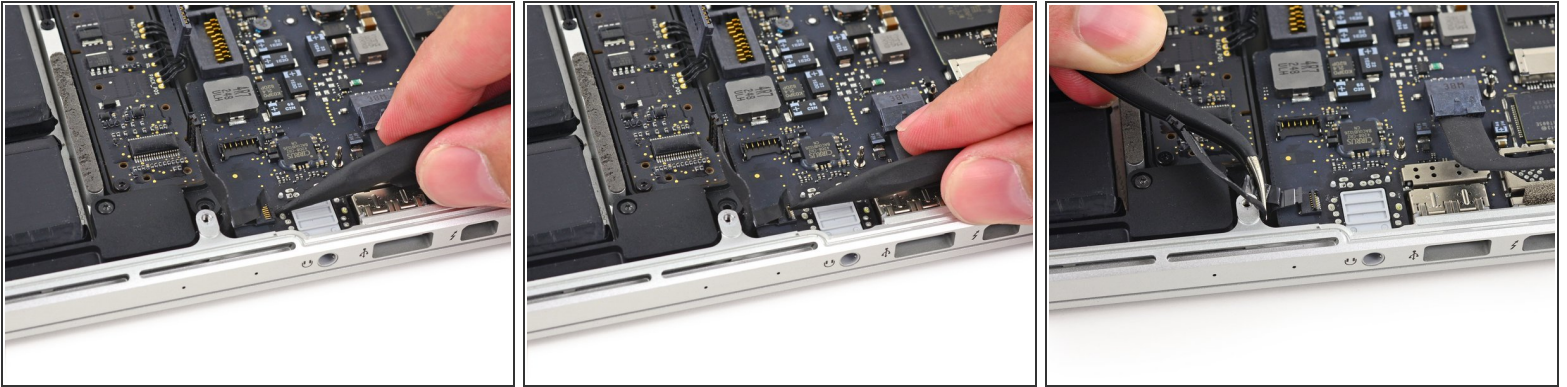
- Wedge the flat end of a spudger under the left speaker cable near the connector and lift it straight up out of its socket and fold it out of the way.

Step 10



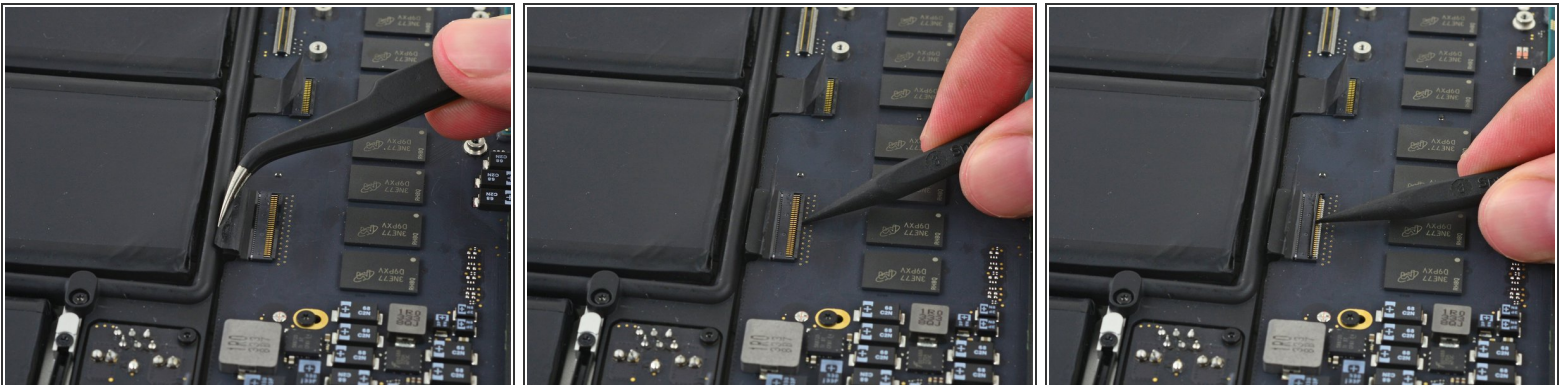
- ⓘ If necessary, peel back any tape covering the microphone cable ZIF connector.

Step 11



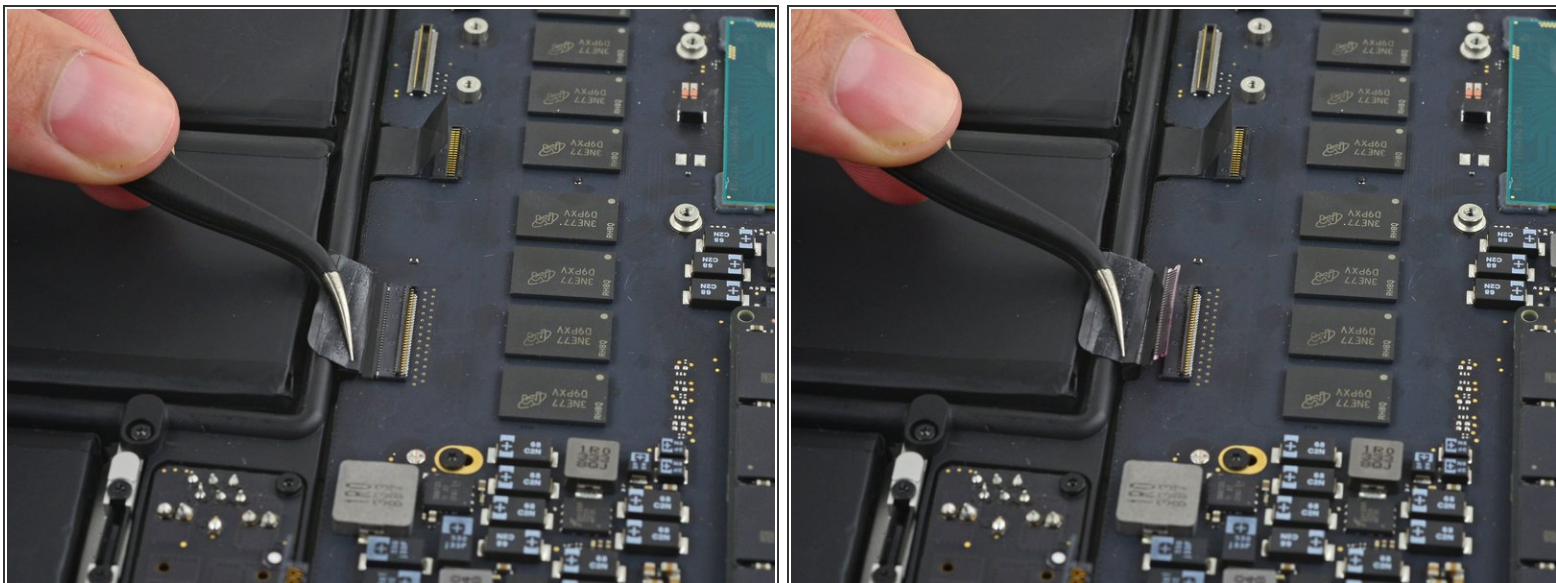
- Use the tip of a spudger to flip the retaining tab on the microphone cable ZIF connector.
- Pull the microphone cable out of its socket on the logic board.

Step 12



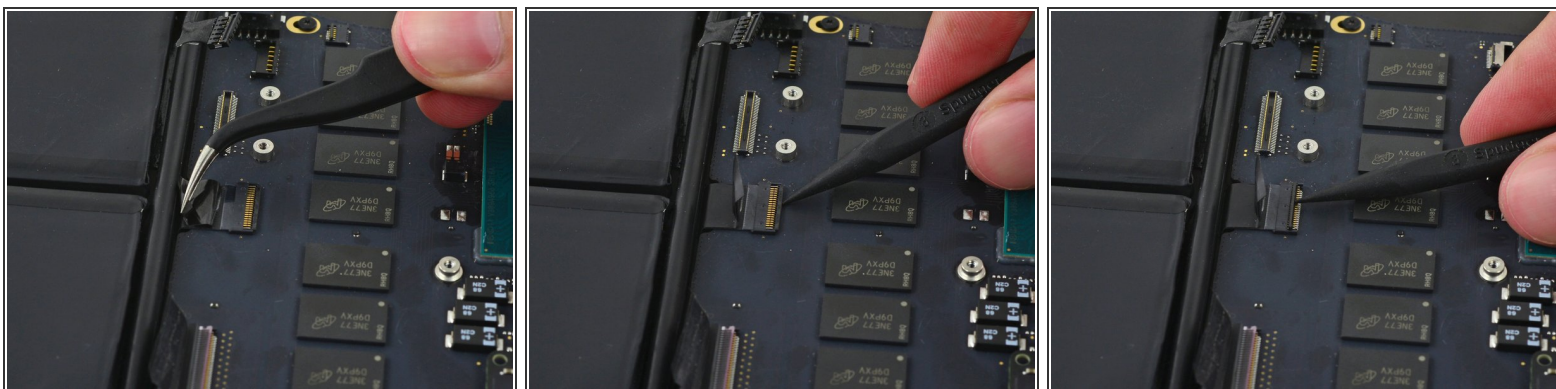
- ⓘ If necessary, peel back any tape covering the keyboard cable connector.
- Use the tip of a spudger to flip the retaining tab on the ZIF connector.

Step 13



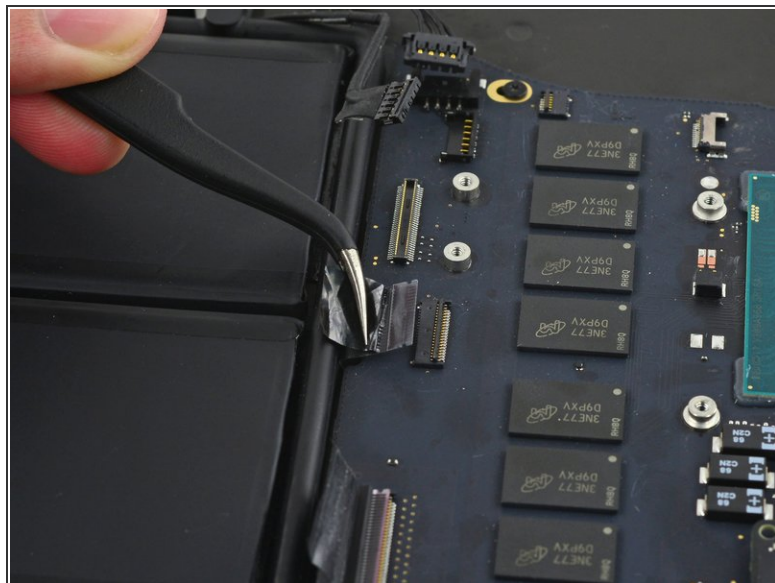
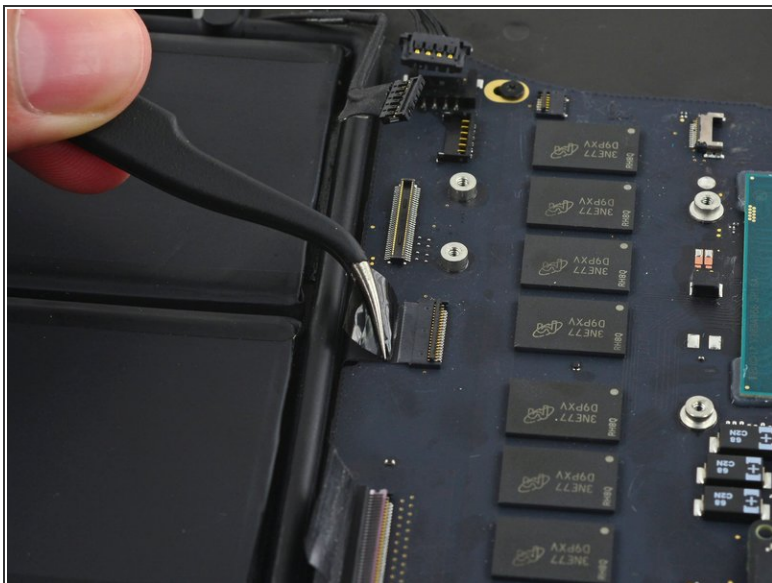
- Pull the keyboard cable straight out of its ZIF socket on the logic board.

Step 14



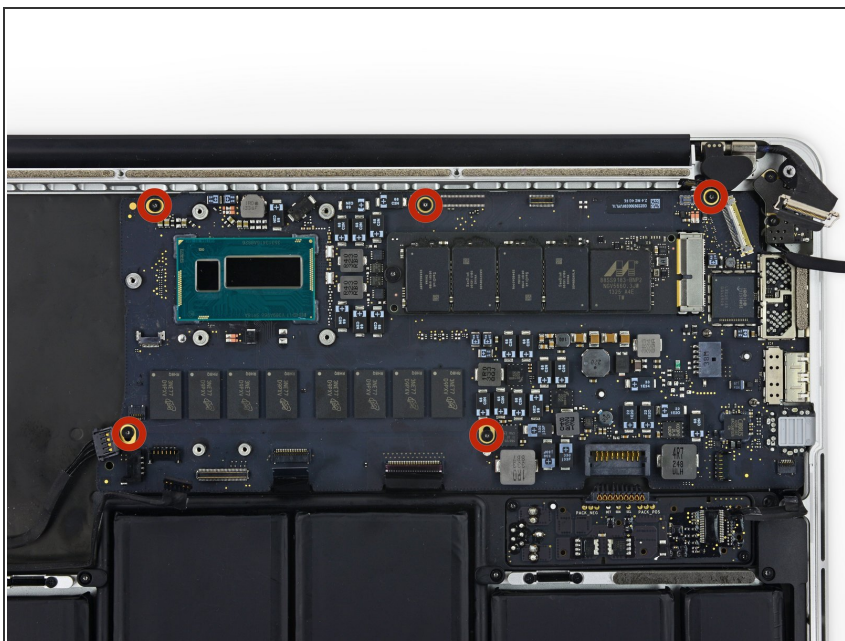
- ⓘ If necessary, peel back any tape covering the trackpad cable connector.
- Use the tip of a spudger to flip the retaining tab on the ZIF connector.

Step 15



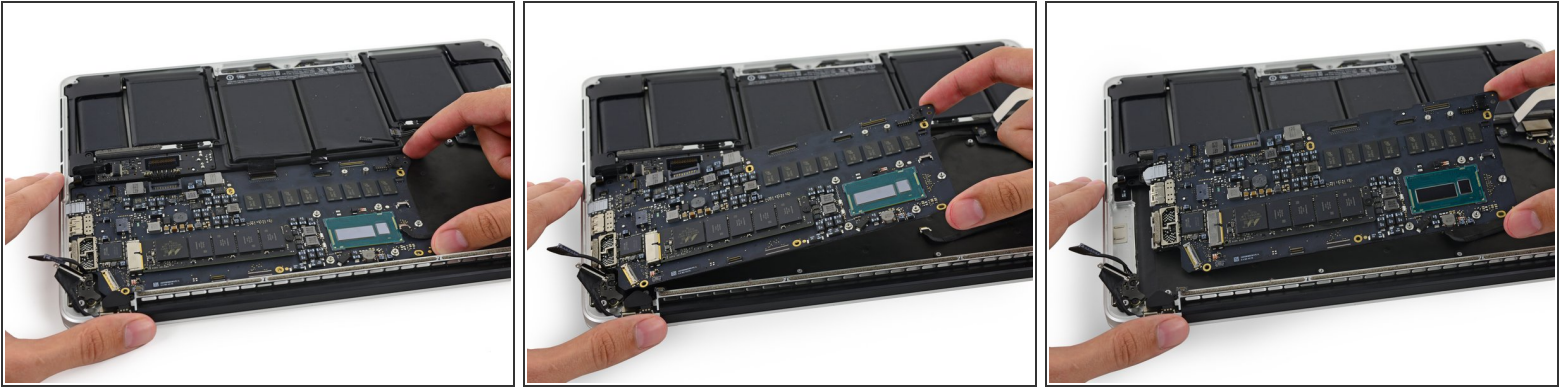
- Pull the trackpad ribbon cable straight out of its socket on the logic board.

Step 16



- Remove the five 3.5 mm T5 Torx screws securing the logic board to the upper case.
- ☑ When reassembling, install all five screws loosely, position the logic board, and then tighten evenly.

Step 17



- Lift the processor end of the logic board up slightly and pull it toward the fan recess to free the ports from the edge of the upper case.
 - Remove the logic board.
- ✦ When reinstalling, make sure the keyboard, keyboard backlight, MagSafe, and microphone cables don't get trapped beneath the logic board.
- ✦ Also be sure to slide the ports' metal EMI fingers under the side of the case, not over.

To reassemble your device, follow these instructions in reverse order.