



MacBook Pro 13" Retina Display Mid 2014 Display Assembly Replacement

Replace the Display Assembly in your MacBook Pro 13" Retina Display Mid 2014.

Written By: Sam Goldheart



INTRODUCTION

Use this guide to replace the Retina display, which includes the display glass and iSight camera assembly.



TOOLS:

- [P5 Pentalobe Screwdriver Retina MacBook Pro and Air](#) (1)
- [Spudger](#) (1)
- [T5 Torx Screwdriver](#) (1)
- [T8 Torx Screwdriver](#) (1)
- [Tweezers](#) (1)



PARTS:

- [MacBook Pro 13" Retina \(Late 2013/Mid 2014\) Display Assembly](#) (1)

Step 1 — Lower Case



- Remove the following ten screws securing the lower case to the upper case:
 - Two 2.3 mm Pentalobe screws
 - Eight 3.0 mm Pentalobe screws
- ☑ Throughout this repair, [keep track of each screw](#) and make sure it goes back exactly where it came from to avoid damaging your device.



Step 2



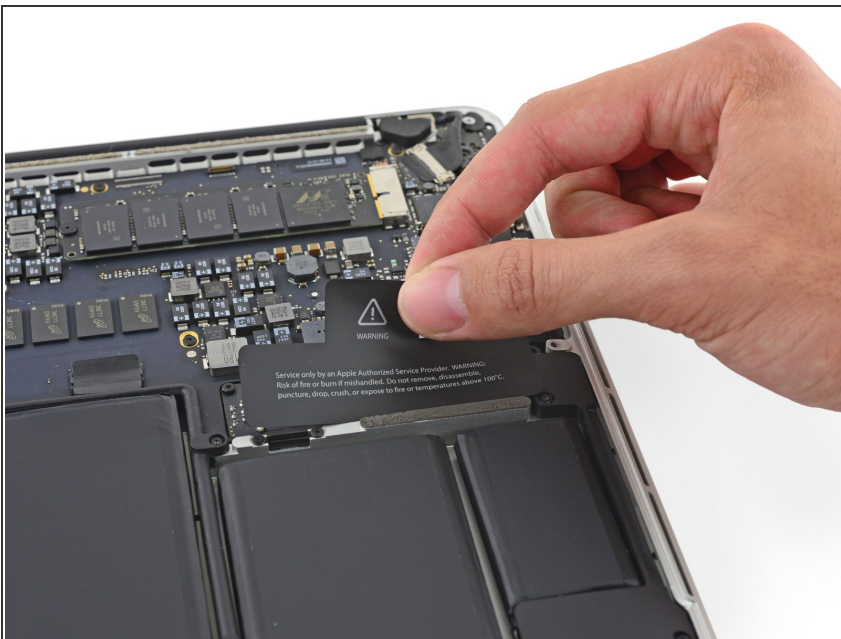
- Wedge your fingers between the upper case and the lower case.
- Gently pull the lower case away from the upper case to remove it.


Step 3



-  The lower case is connected to the upper case with two plastic clips near its center.
-  During reassembly, gently push down the center of the lower case to reattach the two plastic clips.

Step 4 — Battery Connector



-  If necessary, remove the plastic cover adhered to the battery contact board.

Step 5



- Use the flat end of a spudger to lift the battery connector straight up out of its socket on the logic board.

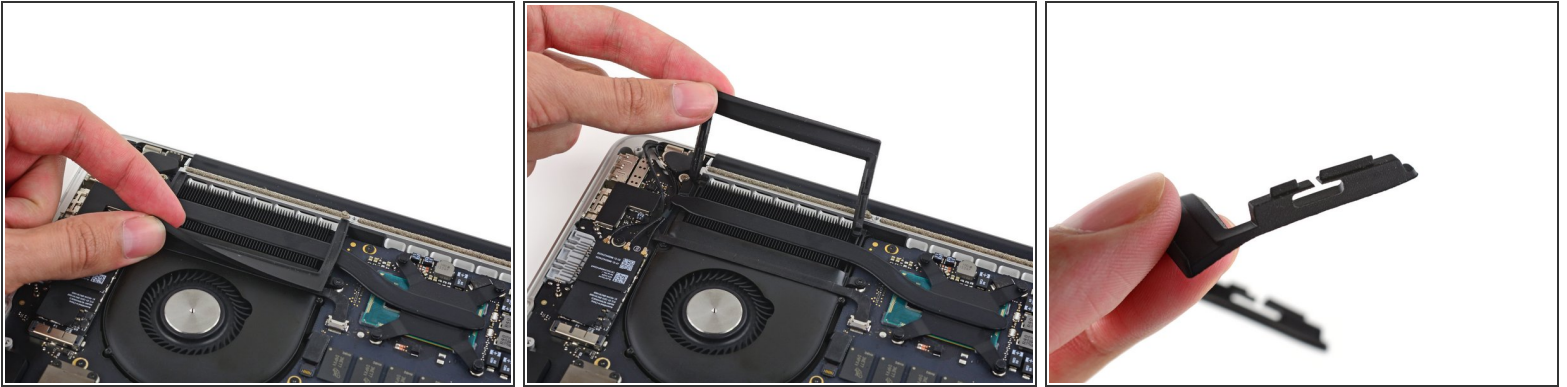
⚠ Be sure you lift up only on the connector itself, **not** the socket, or you risk permanent damage to the logic board.

Step 6



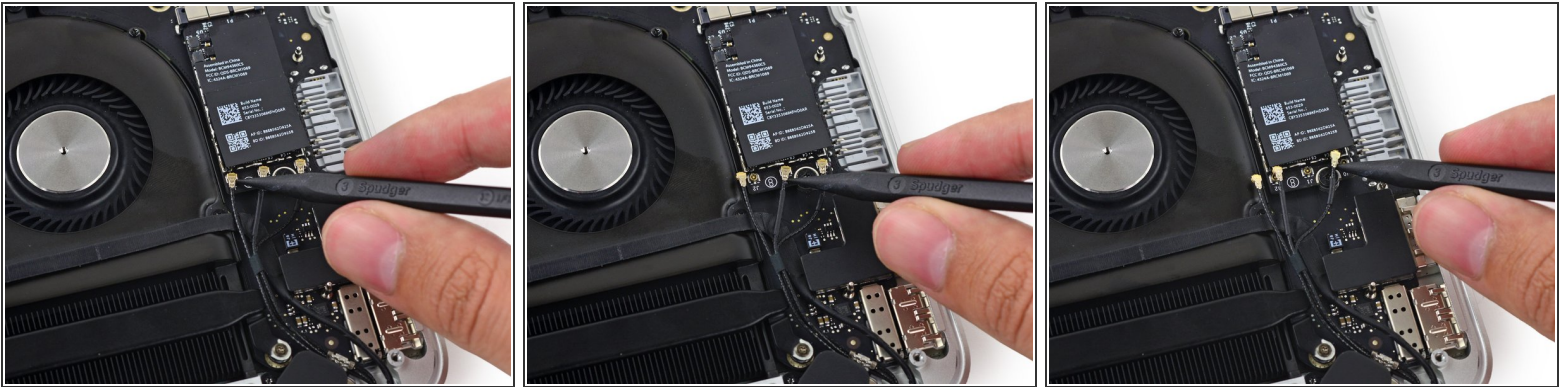
- ☑ Bend the battery connector up out of the way to prevent accidental contact with its socket during your repair.

Step 7 — Display Assembly



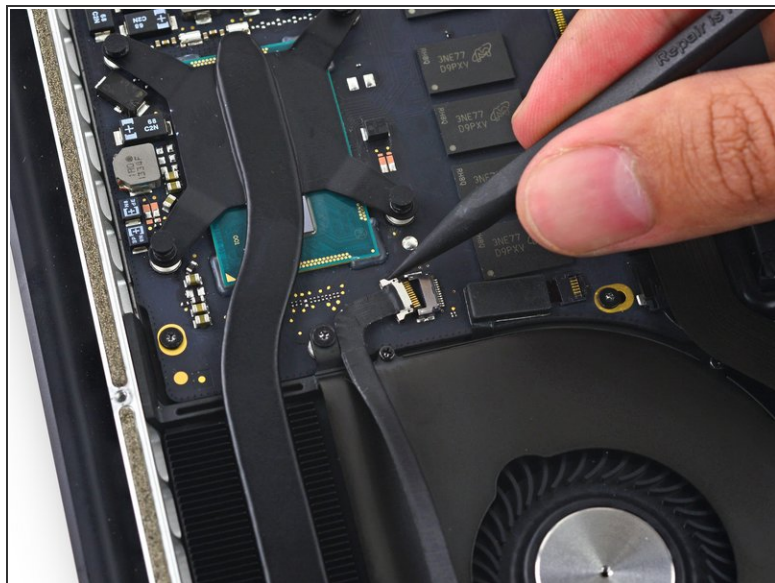
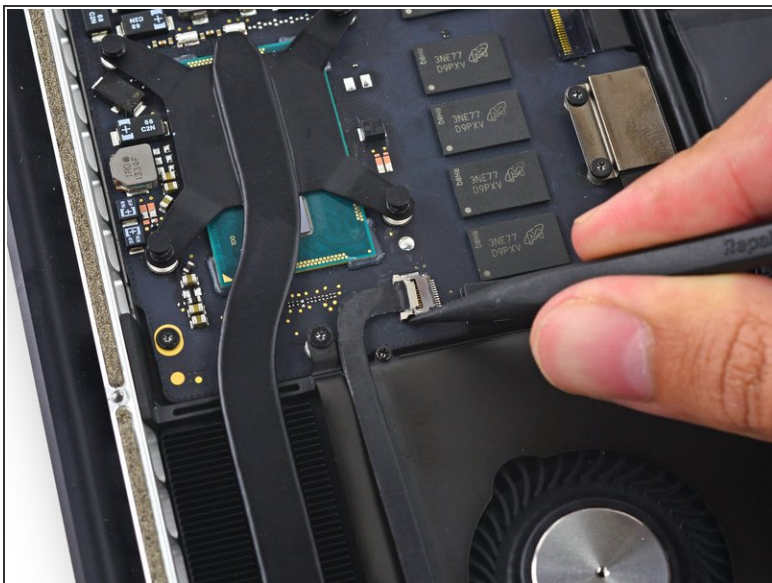
- Carefully remove the rubber fan bumper from the edge of the heat sink.
- ☞ The fan bumper wraps around the heat sink and fits into the fan duct slots. During reassembly, be sure to fit the tabs into the notches in the fan duct.

Step 8



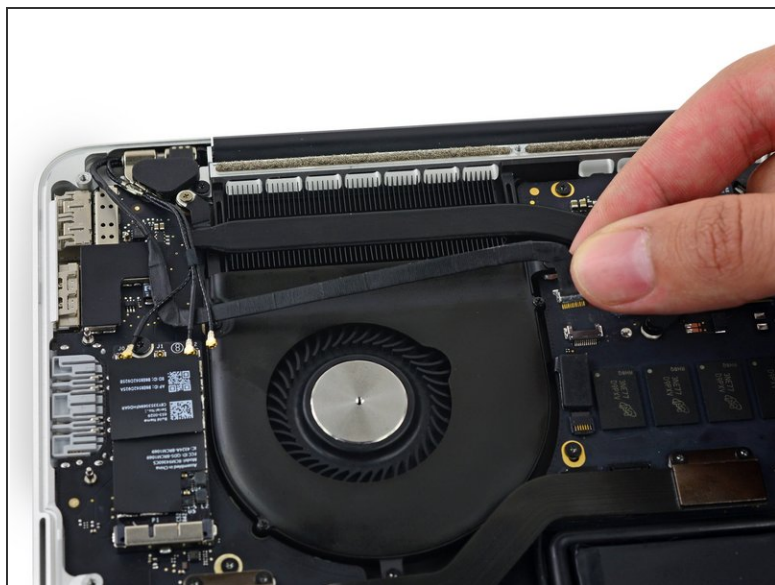
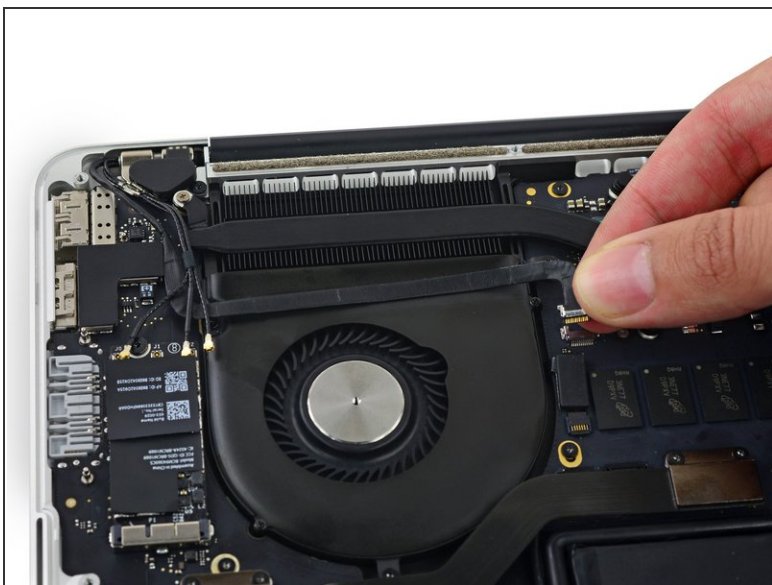
- Insert the tip of a spudger under each of the antenna cables near their connectors and pry up to disconnect them from the AirPort board.
- ☞ The three cables are coded with black sleeves of different lengths. During reassembly:
- Connect the long-sleeved cable to the center socket.
 - The short-sleeved cable connects next to the screw.
 - The remaining cable has no sleeve, and connects in the last empty socket, next to the fan.

Step 9



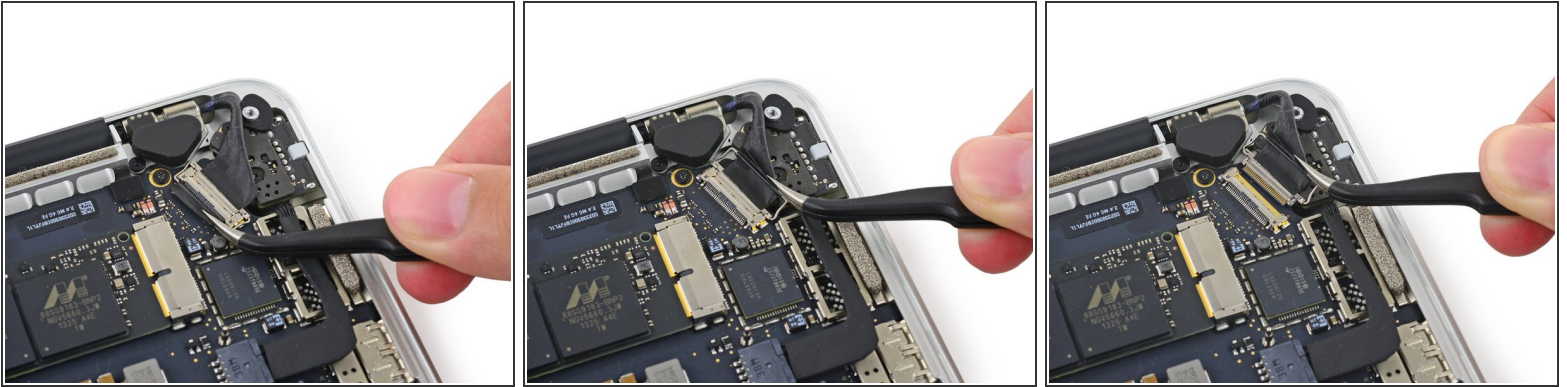
- Use the tip of a spudger to push on either side of the the iSight camera cable connector to *walk* it out of its socket on the logic board.

Step 10



- Peel the iSight camera cable up off the fan housing.

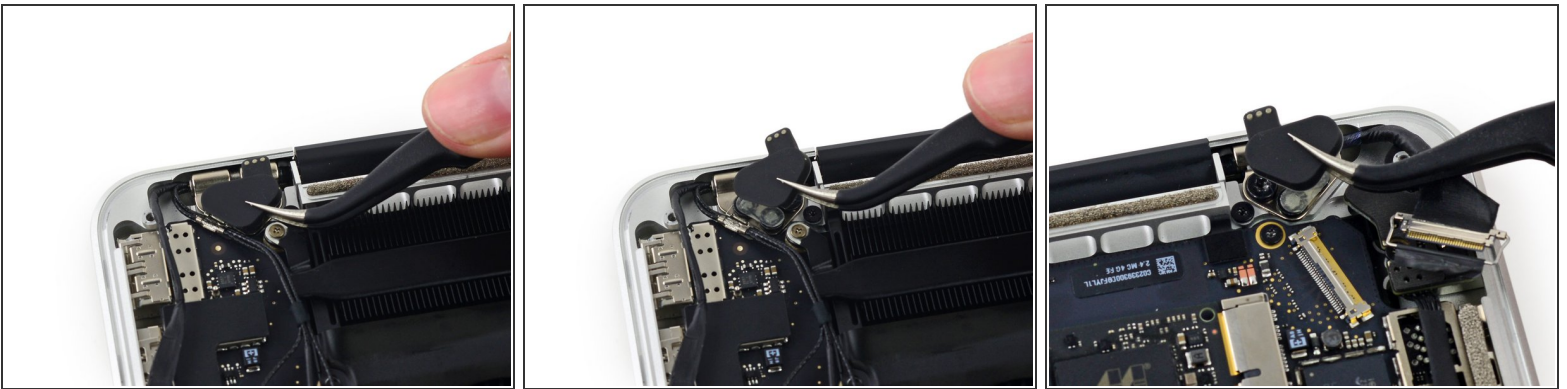
Step 11



- Grab the black plastic tab to flip the display cable connector open and pull it straight out of its socket on the logic board.

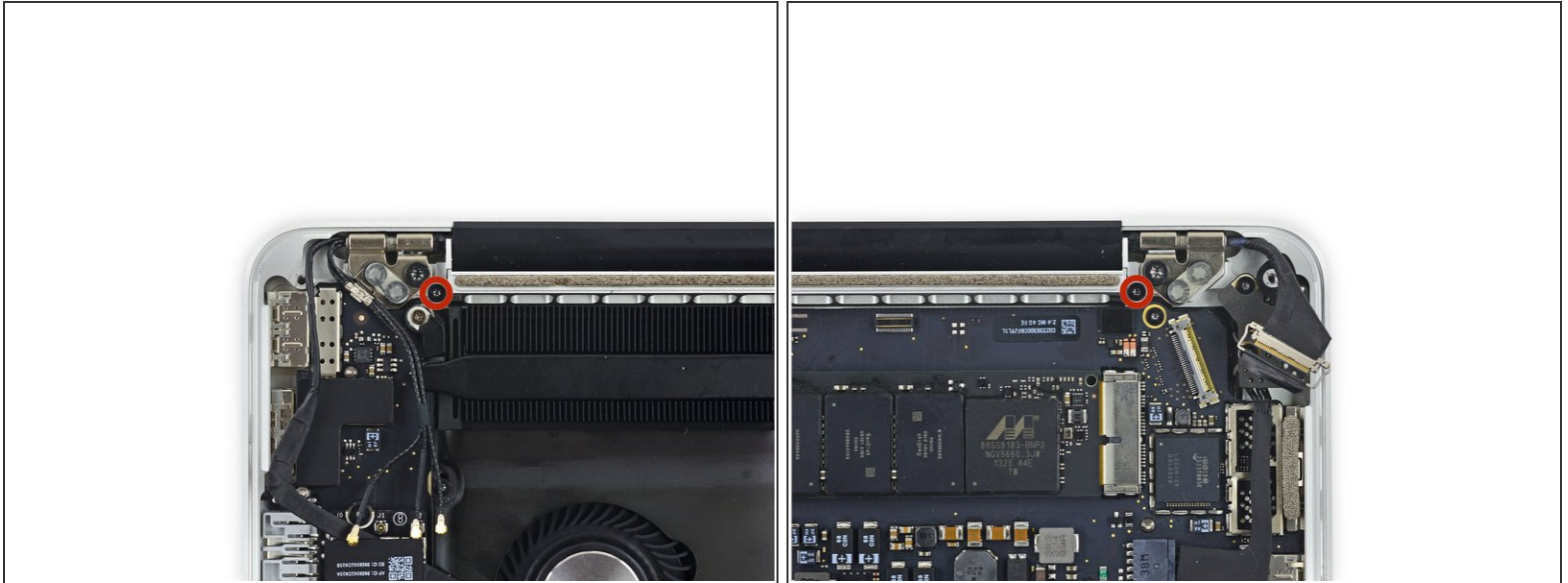
☑ During reinstallation, be sure to fully reseat the display connector tab.

Step 12



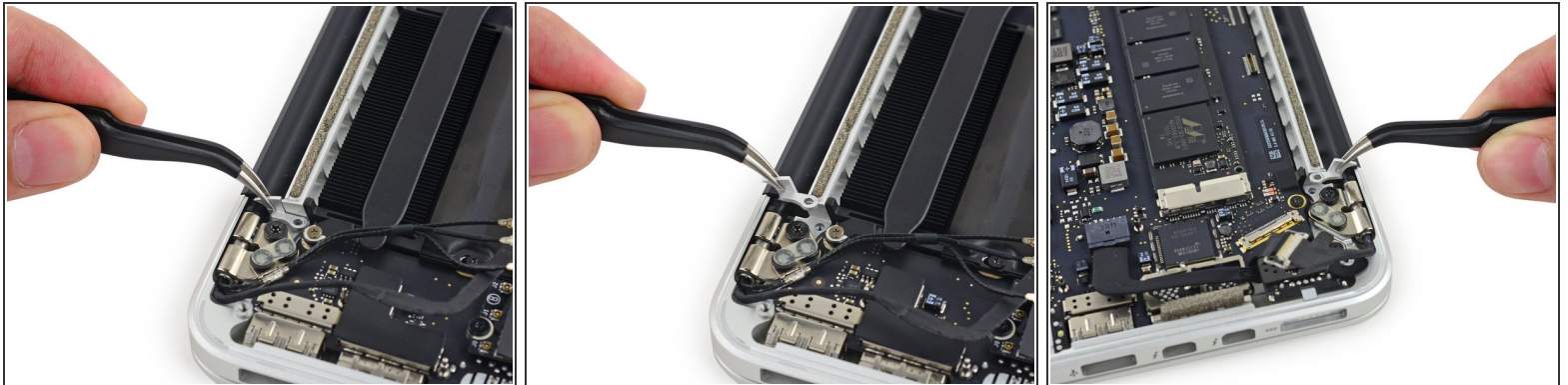
- Remove the rubber hinge covers from the right and left display hinges.

Step 13



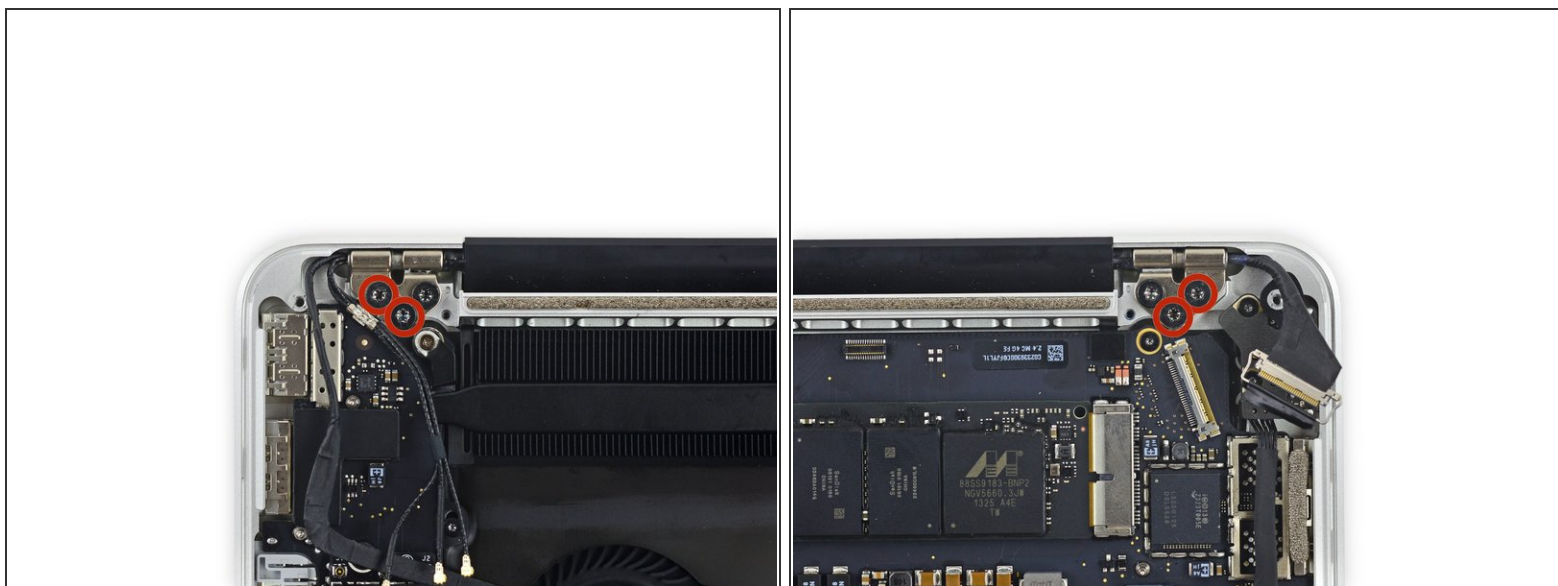
- Remove the two 4.2 mm T5 Torx screws securing the aluminum hinge brackets on either side of the Macbook.

Step 14



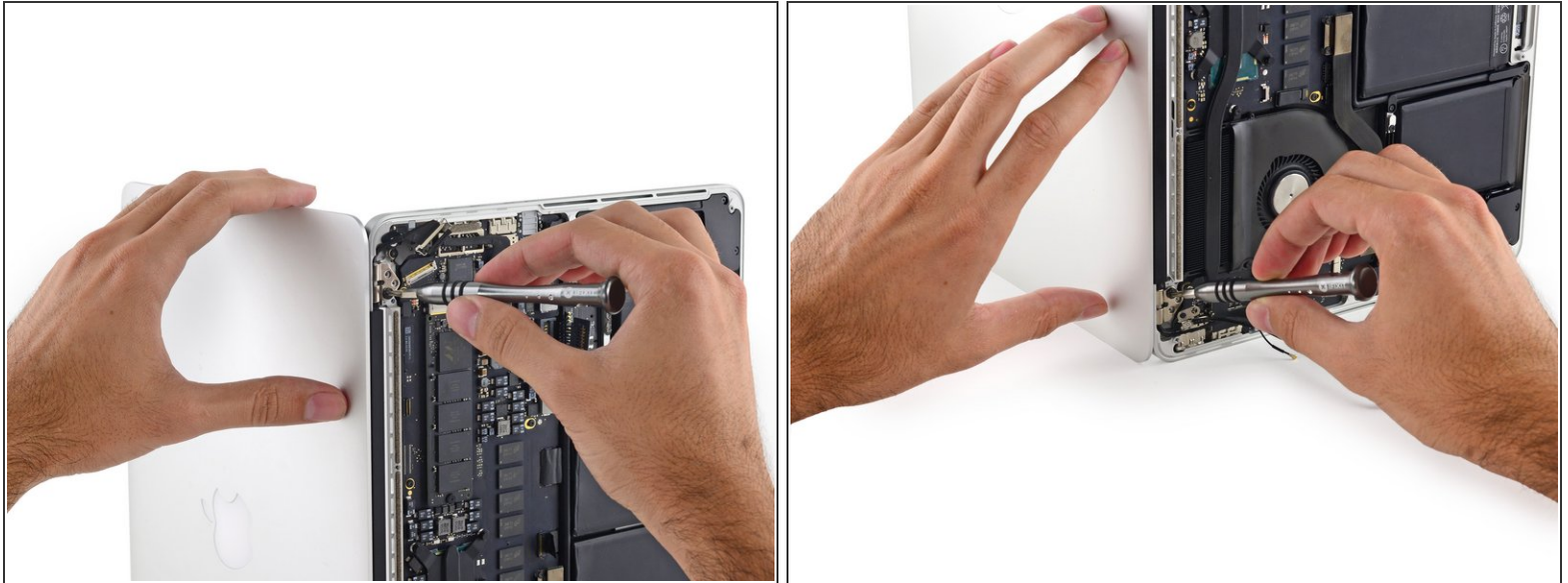
- Use a pair of tweezers to lift aluminum hinge brackets off the right and left display hinges.
- ☑ During reassembly, the vertical portion of the bracket should be in line with the aluminum rail in the center of the Macbook.



Step 15



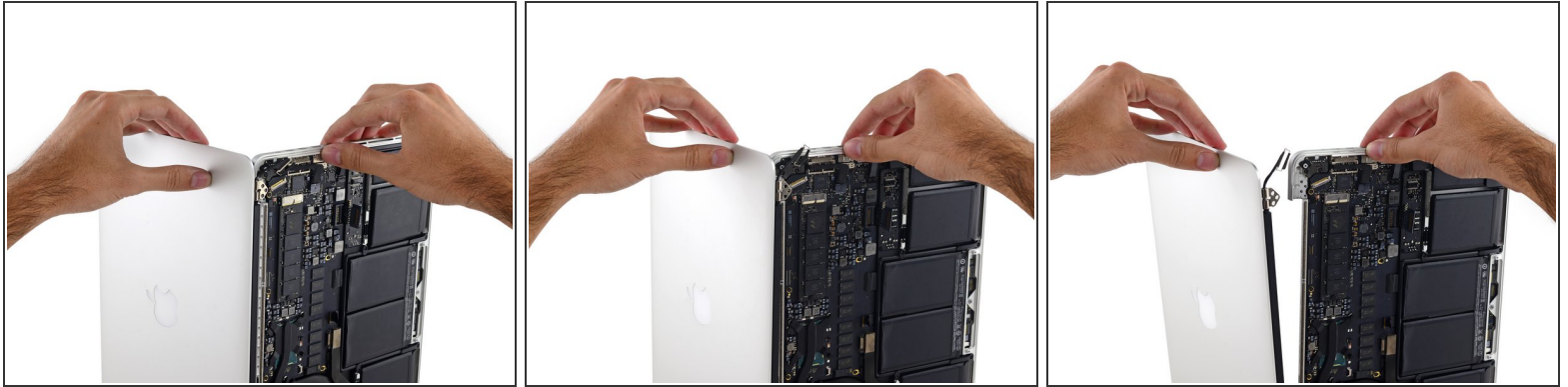
- Remove the four outer 5.3 mm T8 Torx screws (two on each side) securing the display to the upper case.
- ⓘ Some models may use T9 Torx screws rather than T8.

Step 16



-  Open the MacBook Pro a little wider than 90 degrees, and place it on end on the table, as shown.
- While holding the display with your left hand, remove the remaining T8 Torx screw from the upper display bracket.
-  Be sure the display and upper case are balanced and will not fall, potentially damaging each component.
- Remove the last remaining T8 Torx screw securing the display to the upper case.

Step 17



- Grab the upper case with your right hand and rotate it slightly clockwise, toward the top of the display, so the display brackets clear the edge of the upper case.
- Rotate the display slightly away from the upper case.
- Pull the display away from the upper case, minding any brackets or cables that may get caught.

To reassemble your device, follow these instructions in reverse order.