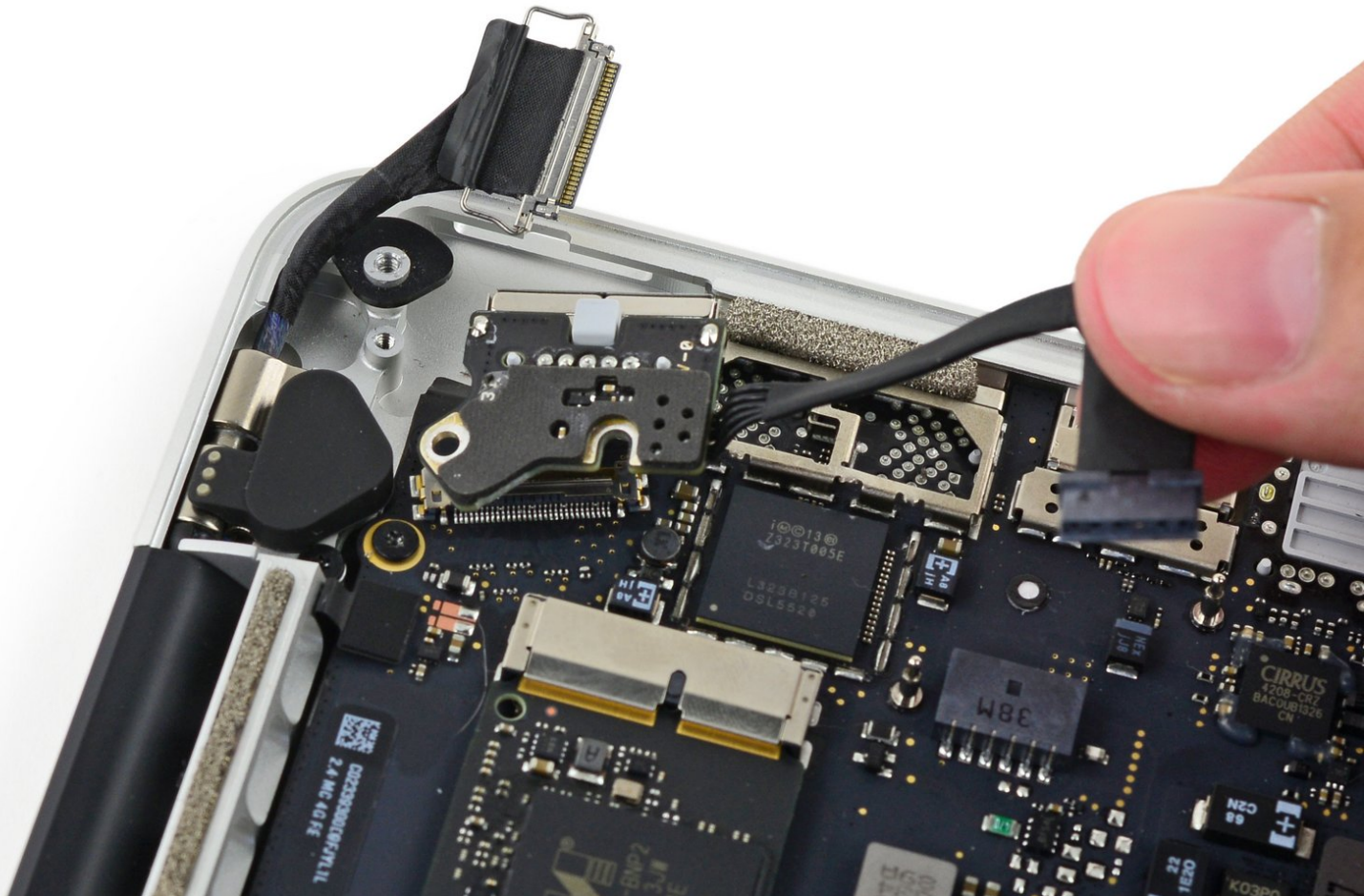




# MacBook Pro 13" Retina Display Mid 2014 MagSafe DC-In Board Replacement

Replace the MagSafe DC-In Board in your MacBook Pro 13" Retina Display Mid 2014.

Written By: Sam Goldheart



# INTRODUCTION

Use this guide to replace a faulty MagSafe DC-In board.



## TOOLS:

- [P5 Pentalobe Screwdriver Retina MacBook Pro and Air](#) (1)
- [Spudger](#) (1)
- [T5 Torx Screwdriver](#) (1)



## PARTS:

- [MacBook Pro 13" Retina \(Late 2013/Early 2015\) MagSafe 2 DC-In Board](#) (1)

## Step 1 — Lower Case



- Remove the following ten screws securing the lower case to the upper case:
  - Two 2.3 mm Pentalobe screws
  - Eight 3.0 mm Pentalobe screws
- ☑ Throughout this repair, [keep track of each screw](#) and make sure it goes back exactly where it came from to avoid damaging your device.



## Step 2



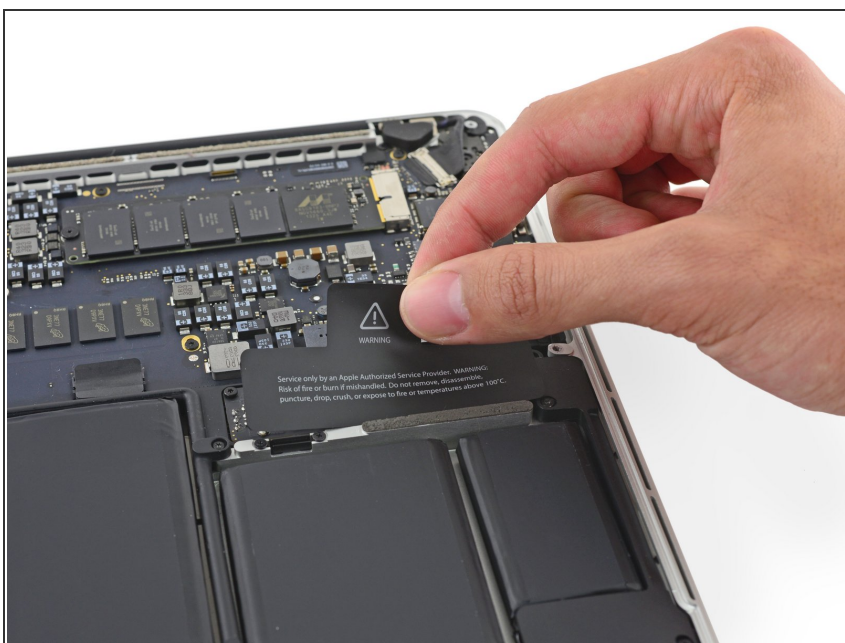
- Wedge your fingers between the upper case and the lower case.
- Gently pull the lower case away from the upper case to remove it.


## Step 3



-  The lower case is connected to the upper case with two plastic clips near its center.
-  During reassembly, gently push down the center of the lower case to reattach the two plastic clips.

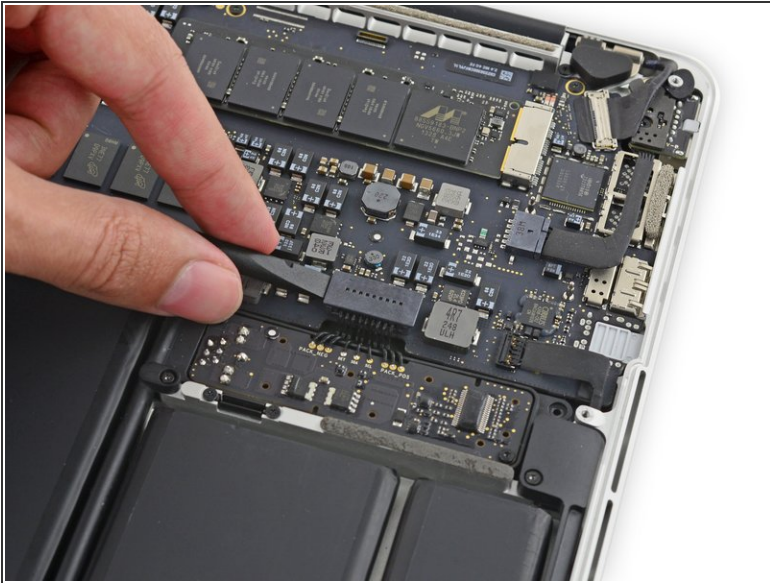
## Step 4 — Battery Connector



-  If necessary, remove the plastic cover adhered to the battery contact board.



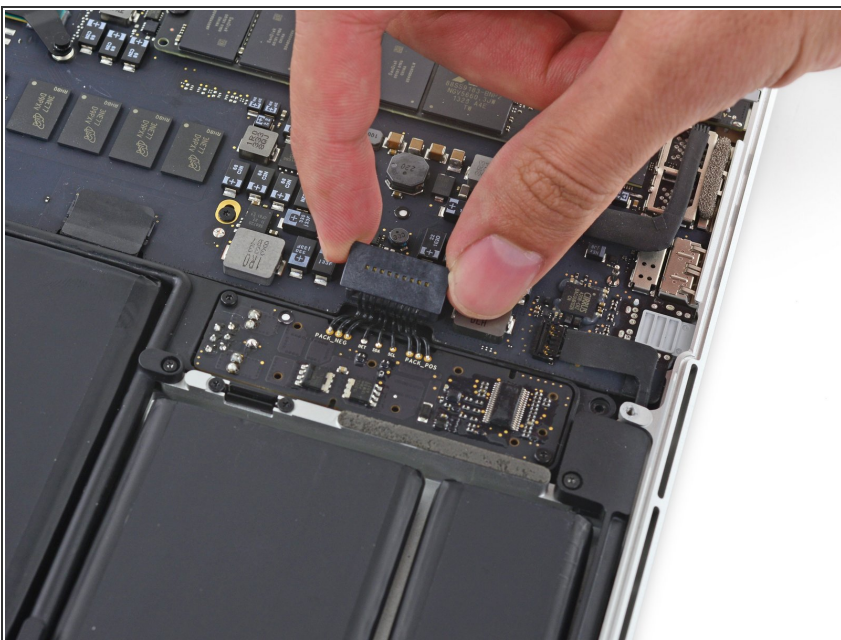
## Step 5



- Use the flat end of a spudger to lift the battery connector straight up out of its socket on the logic board.

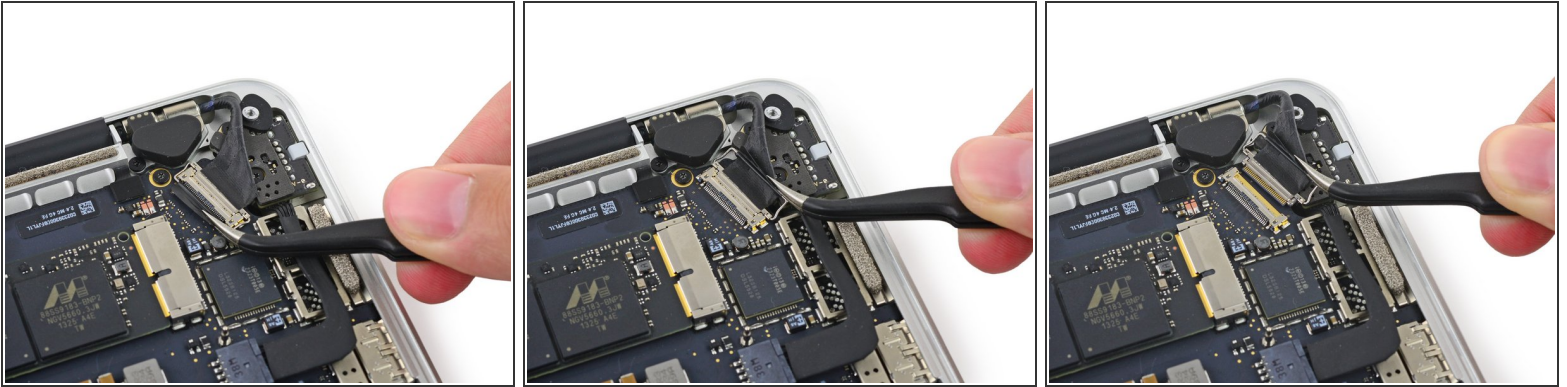
⚠ Be sure you lift up only on the connector itself, **not** the socket, or you risk permanent damage to the logic board.

## Step 6



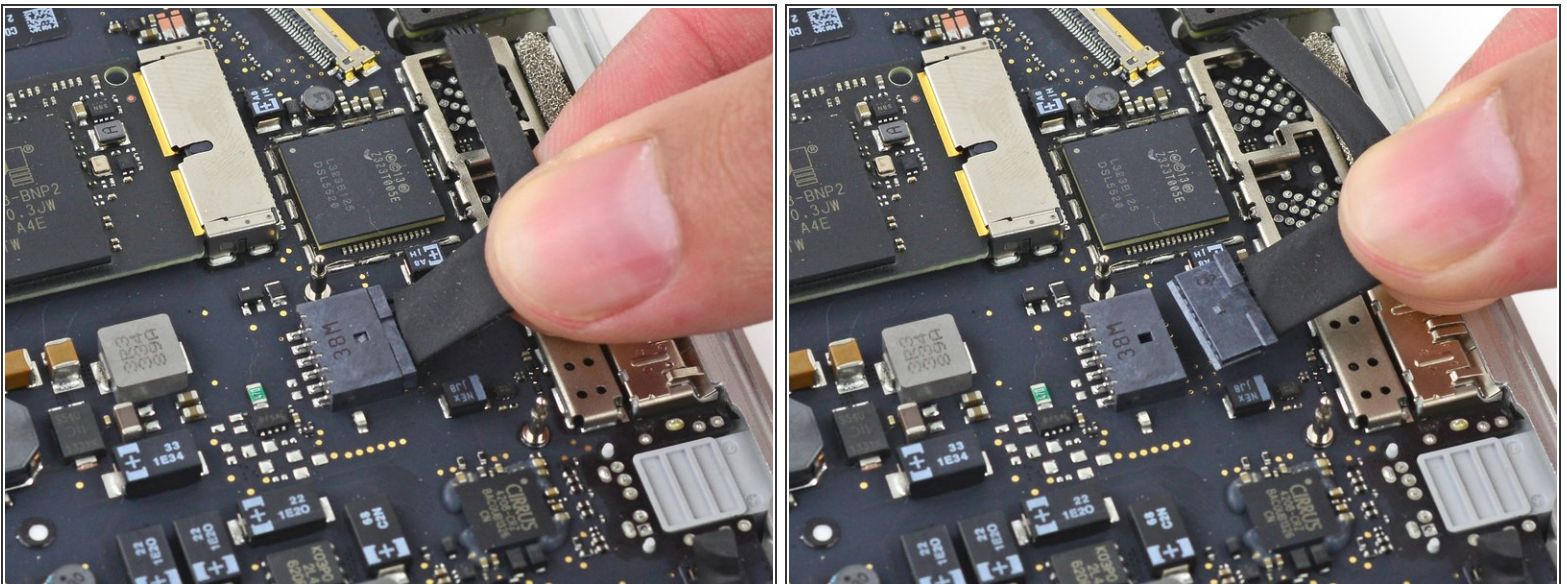
- ☑ Bend the battery connector up out of the way to prevent accidental contact with its socket during your repair.

## Step 7 — MagSafe DC-In Board



- Grab the black plastic tab to flip the display cable connector open and pull it straight out of its socket on the logic board.
- Pull in the direction of the cable, parallel to the logic board. Do not pull up.

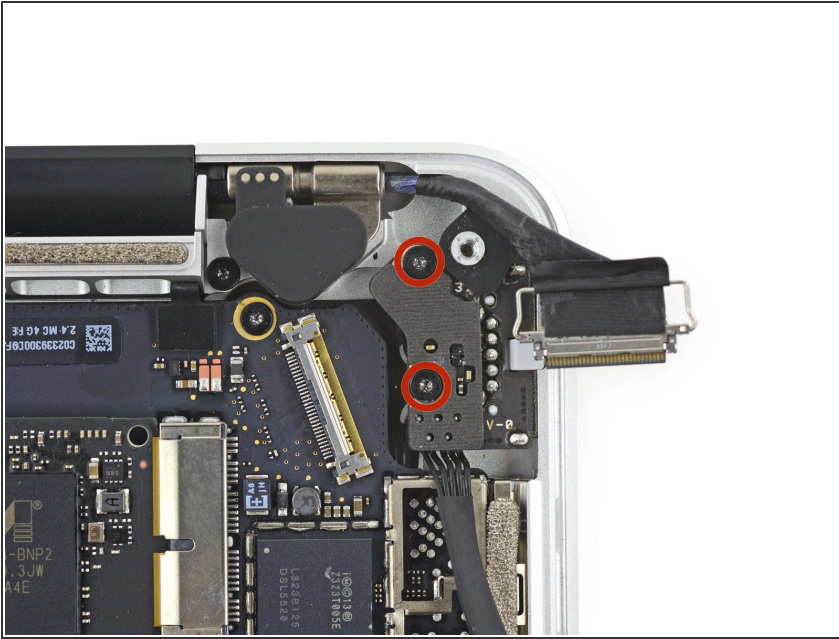
## Step 8




- Pull the DC-In board connector straight out of its socket on the logic board.



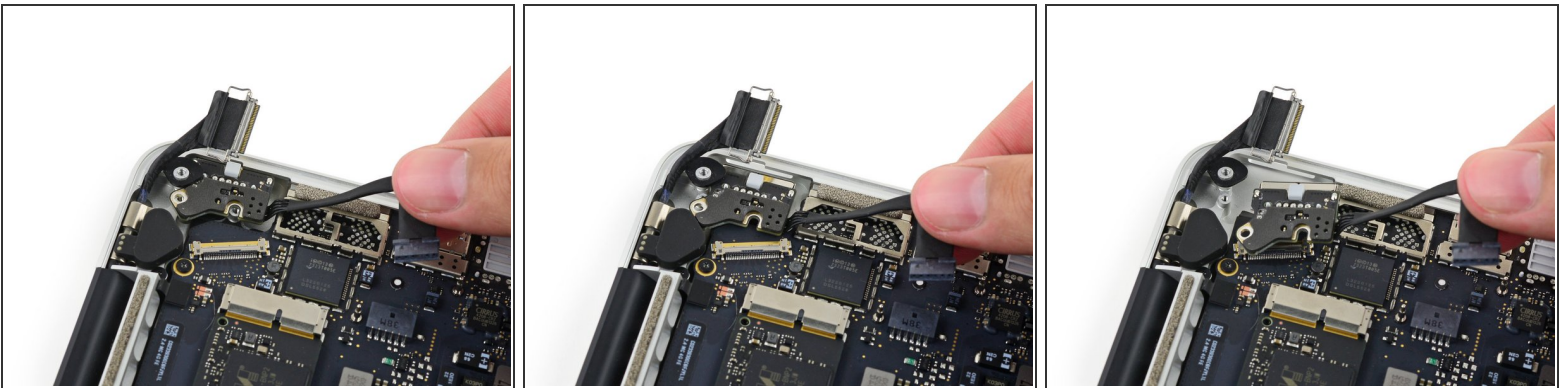
## Step 9



- Remove the two 3.5 mm T5 Torx screws securing the MagSafe DC-In board to the upper case.

 You may need to gently push the display cable out of the way to expose the screws.

## Step 10



- Use the MagSafe DC-In board cable to pull the board out and up from the upper case to remove it.

To reassemble your device, follow these instructions in reverse order.