



MacBook Pro 13" Retina Display Mid 2014

Trackpad Replacement

Replace the Trackpad in your MacBook Pro 13" Retina Display Mid 2014.

Written By: Sam Goldheart



INTRODUCTION

Use this guide to replace the Trackpad. This procedure involves using adhesive remover to remove the battery. **Do not reuse the battery after it has been removed, as doing so is a potential safety hazard.** Replace it with a new battery.

iFixit adhesive remover is highly flammable. Perform this procedure in a well-ventilated area. Do not smoke or work near an open flame during this procedure.

To minimize risk of damage, turn on your MacBook and allow the battery to fully discharge before starting this procedure. A charged lithium-ion battery can create a dangerous and uncontrollable fire if accidentally punctured. If your battery is swollen, [take extra precautions](#).



TOOLS:

- [P5 Pentalobe Screwdriver Retina MacBook Pro and Air](#) (1)
- [Spudger](#) (1)
- [T5 Torx Screwdriver](#) (1)
- [iOpener](#) (1)
- [Plastic Cards](#) (1)
- [iFixit Opening Tools](#) (1)
- [Tweezers](#) (1)



PARTS:

- [MacBook Pro 13" Retina \(Late 2013 Mid 2014\) Battery](#) (1)
- [MacBook Pro 13" Retina \(Late 2013-Mid 2014\) Trackpad](#) (1)
- [MacBook Pro 13" Retina \(Late 2013-Mid 2014\) Trackpad Cable](#) (1)

Step 1 — Lower Case



- Remove the following ten screws securing the lower case to the upper case:
 - Two 2.3 mm Pentalobe screws
 - Eight 3.0 mm Pentalobe screws
- ☑ Throughout this repair, [keep track of each screw](#) and make sure it goes back exactly where it came from to avoid damaging your device.



Step 2



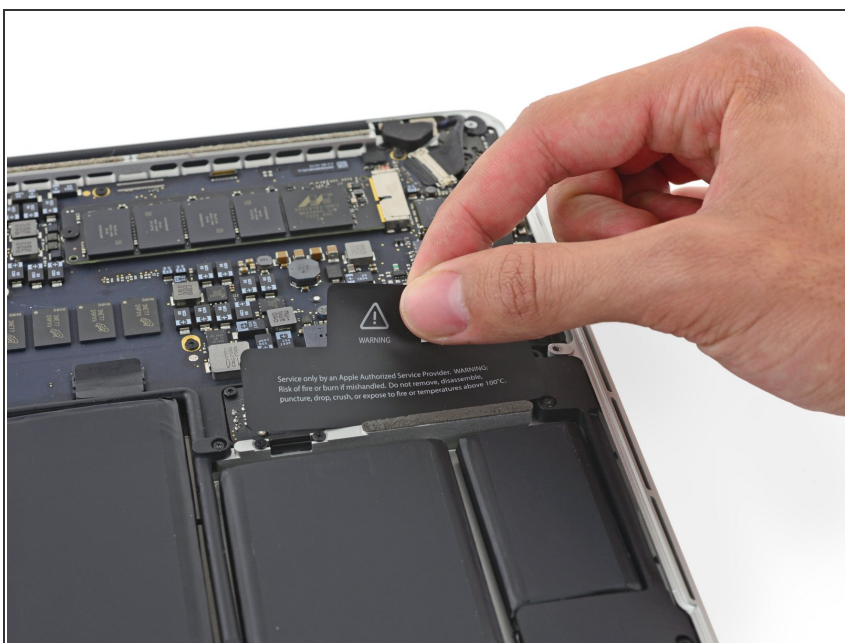
- Wedge your fingers between the upper case and the lower case.
- Gently pull the lower case away from the upper case to remove it.


Step 3



-  The lower case is connected to the upper case with two plastic clips near its center.
-  During reassembly, gently push down the center of the lower case to reattach the two plastic clips.

Step 4 — Battery Connector



-  If necessary, remove the plastic cover adhered to the battery contact board.

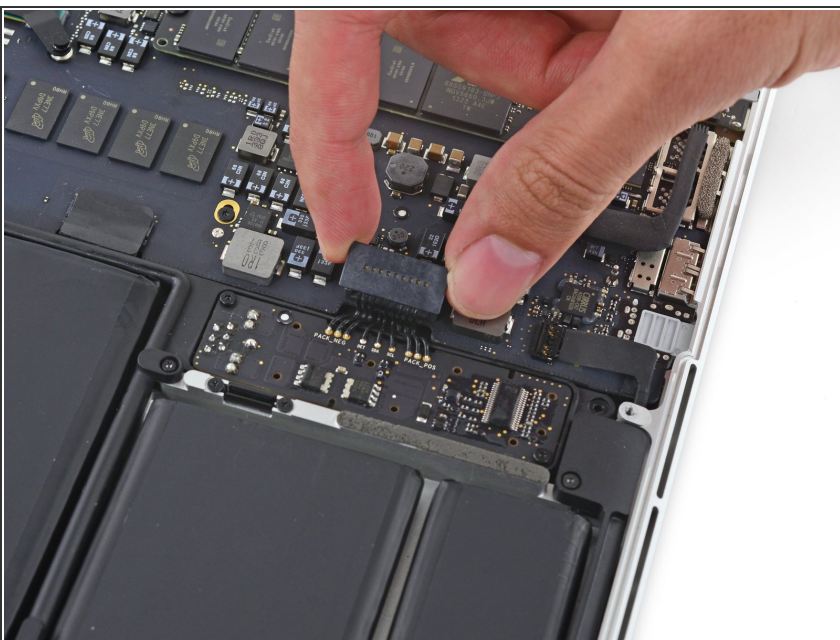
Step 5



- Use the flat end of a spudger to lift the battery connector straight up out of its socket on the logic board.

⚠ Be sure you lift up only on the connector itself, **not** the socket, or you risk permanent damage to the logic board.

Step 6



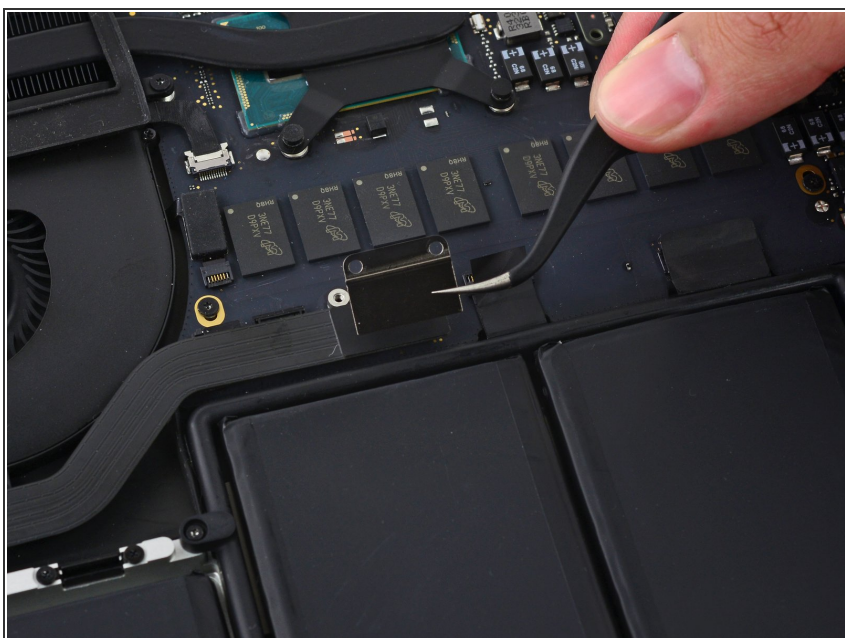
- ☑ Bend the battery connector up out of the way to prevent accidental contact with its socket during your repair.

Step 7 — Right Speaker



- Remove the two 2.1 mm T5 Torx screws securing the logic board end of the I/O board cable bracket.

Step 8



- Grasp the I/O board cable bracket with a pair of tweezers and remove it from the MacBook.

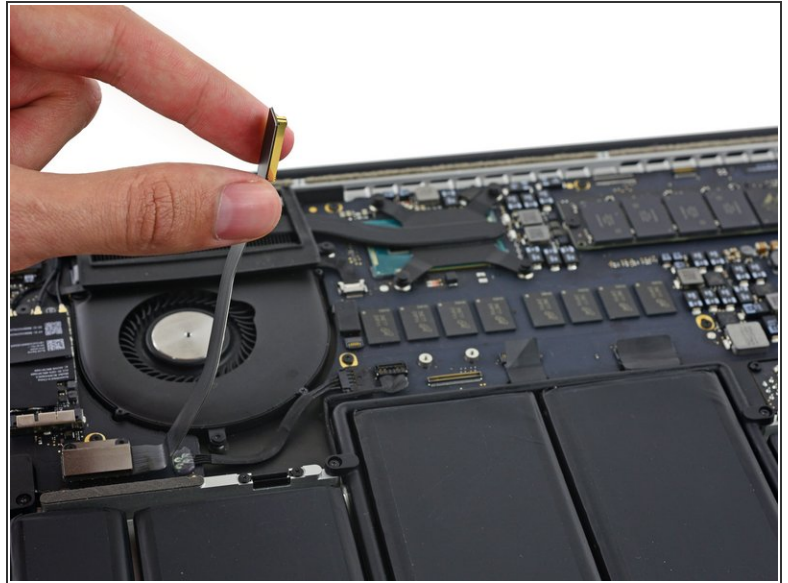
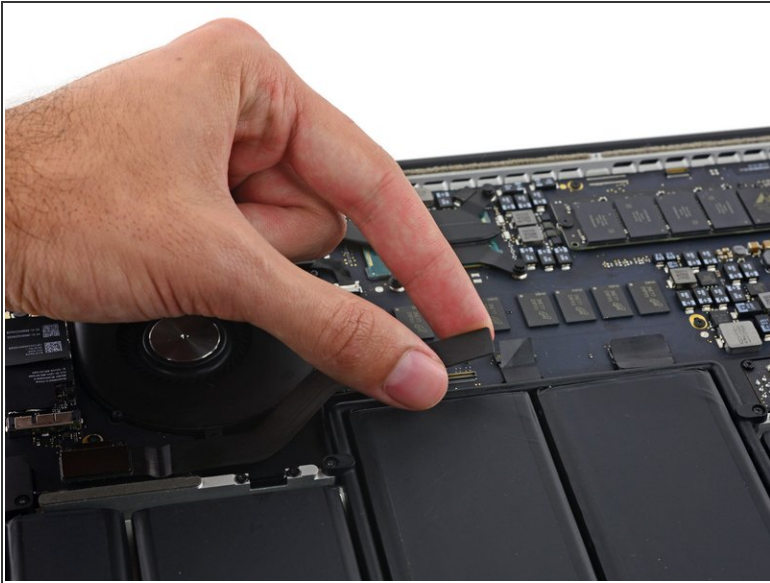
Step 9



- Use the flat end of a spudger to pop the I/O board connector straight up off its socket on the logic board.

⚠ Be careful to only pry up on the I/O board cable, **not** on the socket itself or you risk damaging your logic board.

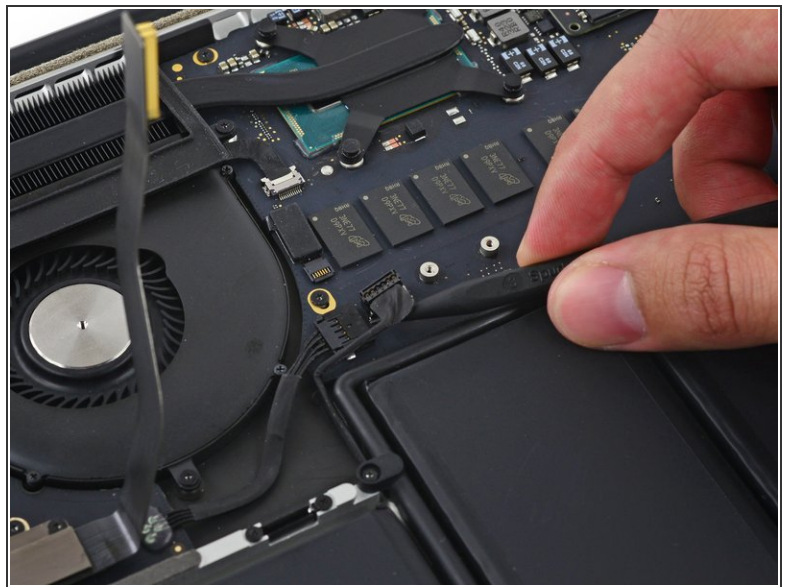
Step 10



- Lift the logic board end of the I/O board cable straight up to bend it out of the way.

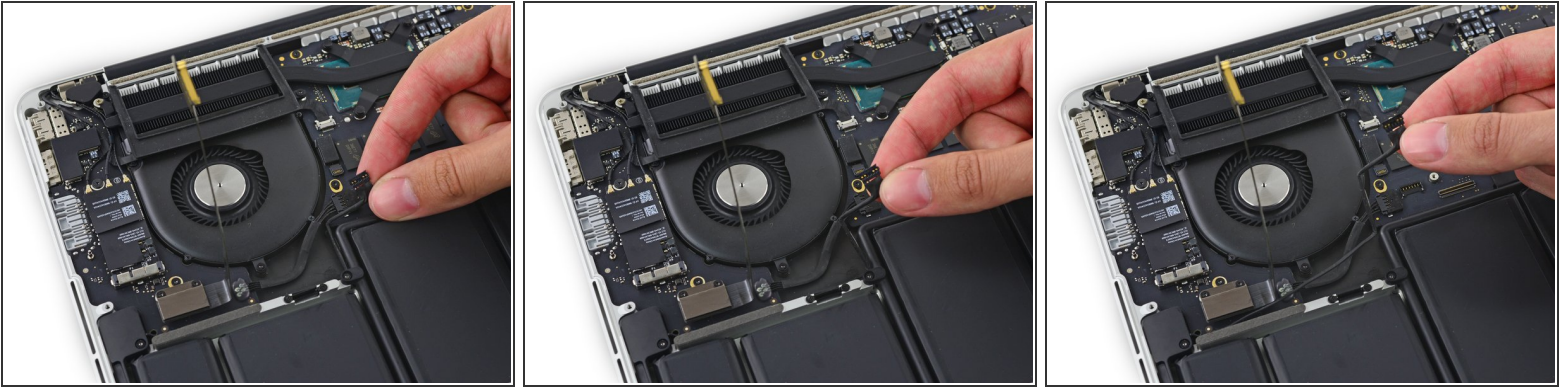
⚠ To avoid damage to the cable, fold only at the bend in the I/O board end of the cable.

Step 11



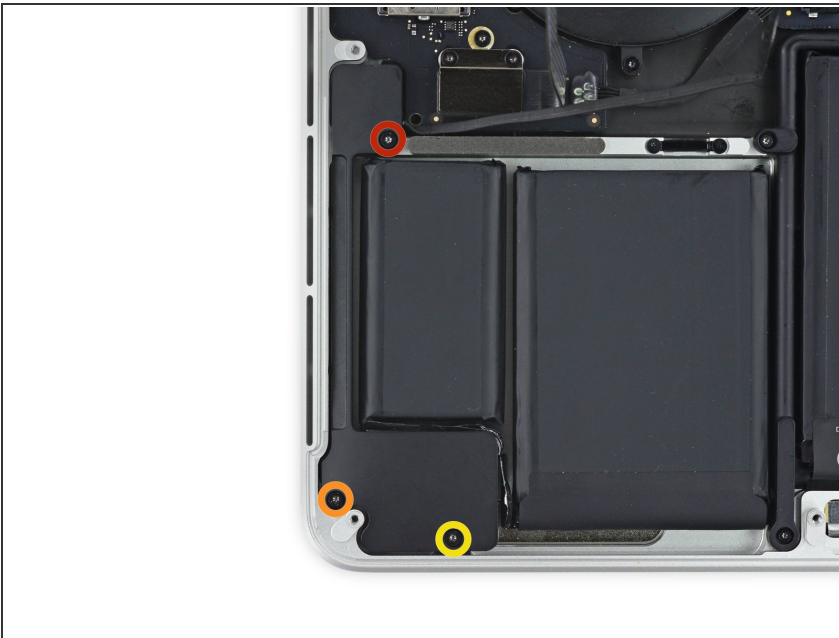
- Carefully tuck the tip of a spudger under the right speaker cable near the connector and lift it up out of its socket on the logic board.

Step 12



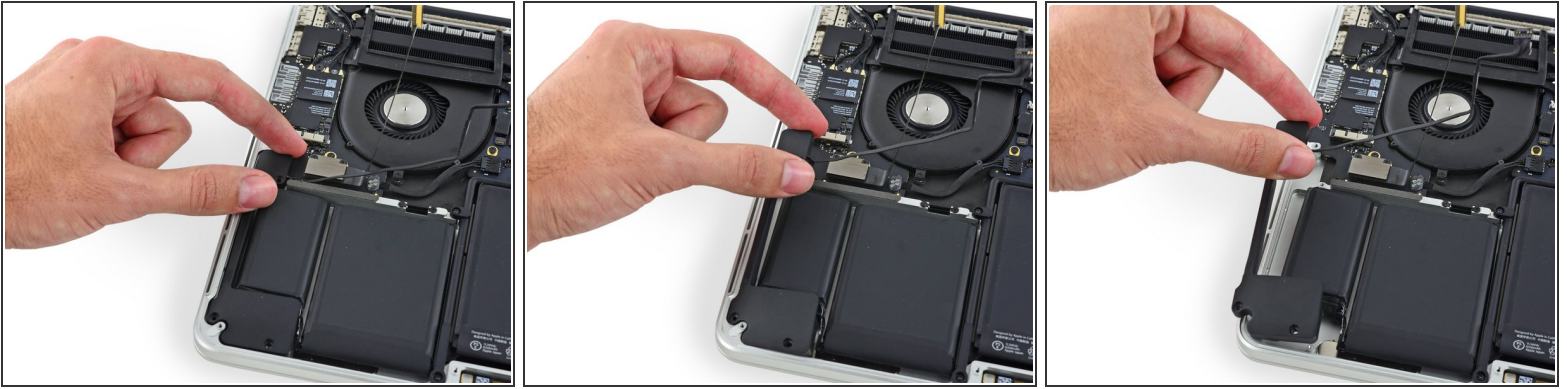
- Carefully peel the right speaker cable off the upper case.

Step 13



- Remove the following screws securing the right speaker to the upper case:
 - One 5.7 mm T5 Torx screw
 - One 6.5 mm T5 Torx screw
 - One 3.8 mm T5 Torx screw

Step 14



- Lift the right speaker from the cable end and pull it free from the case.

Step 15 — iOpener Heating



- ⓘ We recommend that you clean your microwave before proceeding, as any nasty gunk on the bottom may end up stuck to the iOpener.
- Place the iOpener in the center of the microwave.
- ⚠ For carousel microwaves: Make sure the plate spins freely. If your iOpener gets stuck, it may overheat and burn.

Step 16




- Heat the iOpener for **thirty seconds**.
- Throughout the repair procedure, as the iOpener cools, reheat it in the microwave for an additional thirty seconds at a time.

- ⚠ Be careful not to overheat the iOpener during the repair. Overheating may cause the iOpener to burst.
- ⚠ Never touch the iOpener if it appears swollen.
- ⚠ If the iOpener is still too hot in the middle to touch, continue using it while waiting for it to cool down some more before reheating. A properly heated iOpener should stay warm for up to 10 minutes.

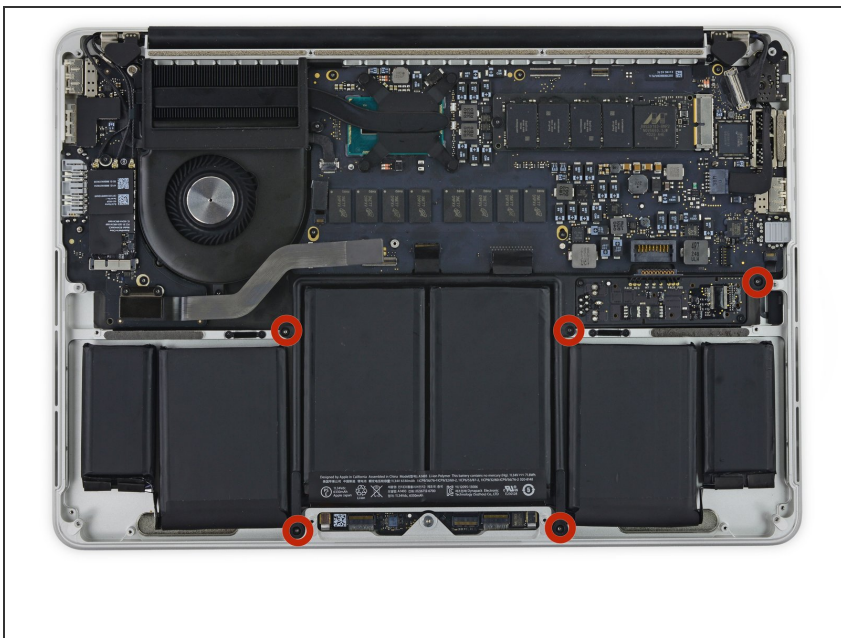
Step 17



- Remove the iOpener from the microwave, holding it by one of the two flat ends to avoid the hot center.

 The iOpener will be very hot, so be careful when handling it. Use an oven mitt if necessary.

Step 18 — Battery



- Remove the five 3.7 mm T5 Torx screws securing the battery to the upper case.
- ⓘ Your specific unit may only have one screw securing the battery's circuit board to the frame.


Step 19




- ⓘ The liquid adhesive remover provided in your iFixit battery replacement kit can affect the antireflective coating on your MacBook Pro's display.
- To protect your display, place a sheet of aluminum foil between the display and keyboard and leave it there while you work.

Step 20



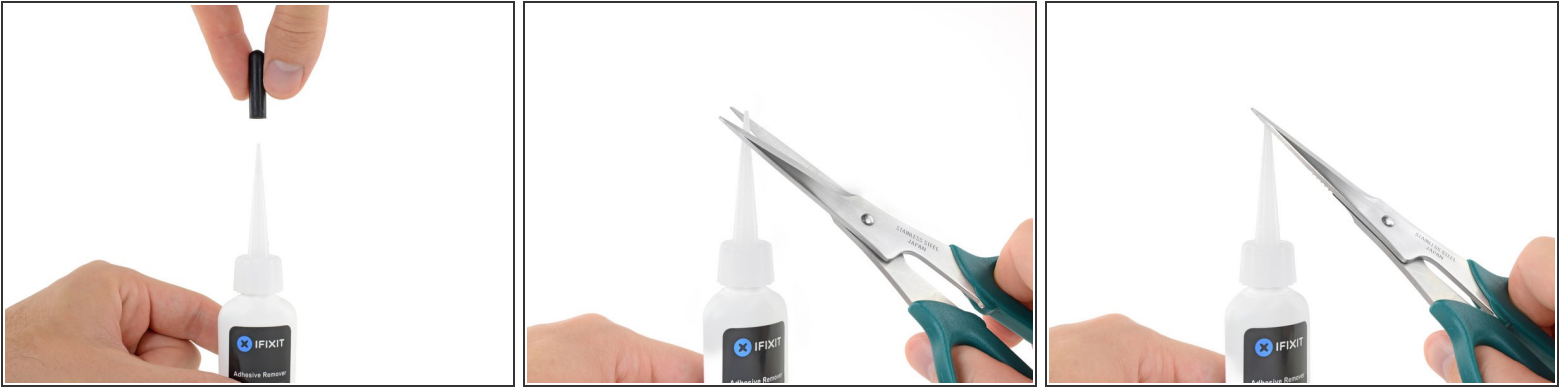
 If you have an iFixit battery kit with liquid adhesive remover, it's time to get it prepped.

- Alternatively, if you are using the hot iOpener method, skip the following three steps.


 iFixit adhesive remover contains acetone, a mild skin and eye irritant.


- Wear eye protection when handling and applying the adhesive remover. (Eye protection is included in your kit.)
- **Do not** wear contact lenses without eye protection.
- Protective gloves are also included in your kit. If you are concerned about skin irritation, put your gloves on now.

Step 21





- Pull off the black rubber stopper from your bottle of adhesive remover.

 Twist to loosen or remove the bottle cap before you cut the applicator tip.

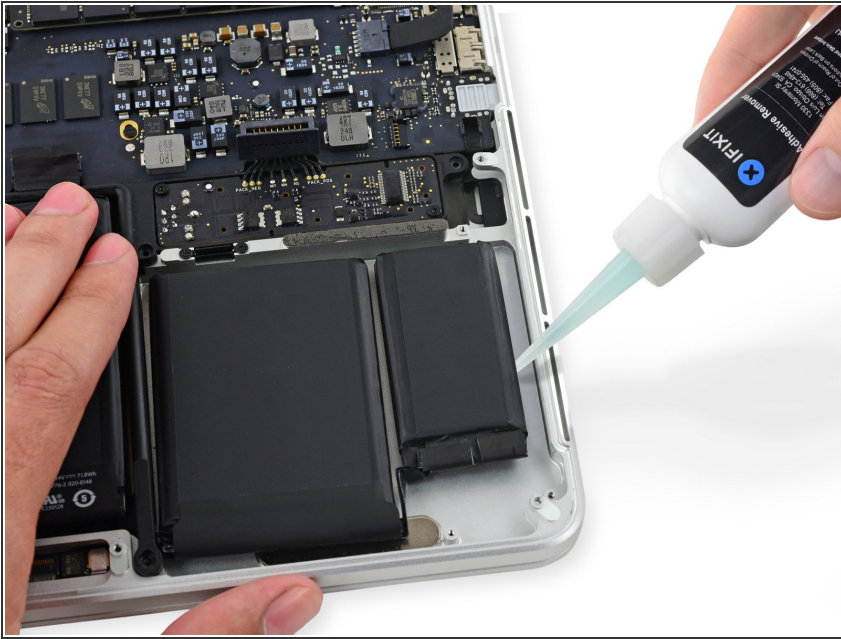
 This unseals the bottle and allows the pressure to equalize before you cut the applicator tip. **If you skip this step, the adhesive remover may spray out unexpectedly when the tip is cut.**

- Use scissors to cut off the sealed tip of the applicator.

 Cutting close to the narrow tip will give you better control so you can apply the adhesive remover in small amounts.

 Twist and close the bottle cap securely before you proceed further.

Step 22



- Apply a few drops of adhesive remover evenly under the edge of the rightmost battery cell.
- ⓘ You don't need to use very much. The small bottle contains more than twice the amount of solvent needed to remove all the battery cells.
- Wait 2-3 minutes for the liquid adhesive remover to penetrate underneath the battery cell before you proceed to the next step.

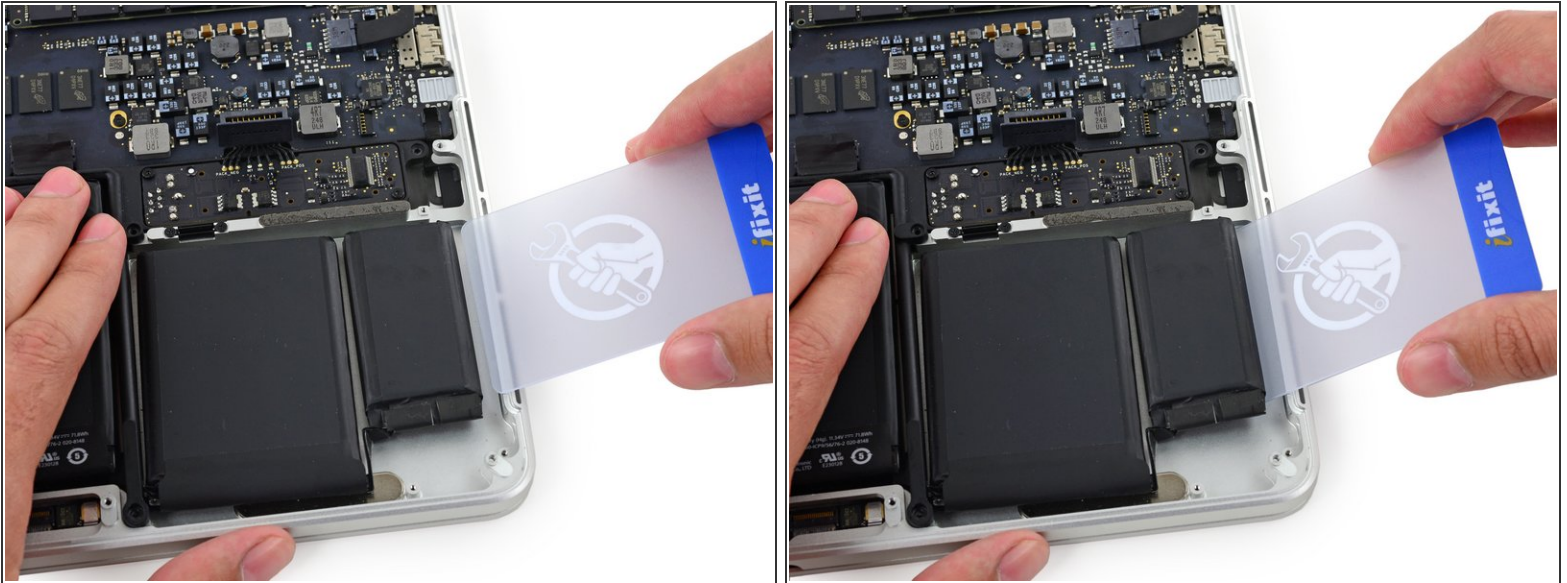
⚠ Use more adhesive remover if needed, but do not apply more than a few drops at a time. Using too much can allow the adhesive remover to make its way to the backside of your keyboard and potentially damage it.

Step 23



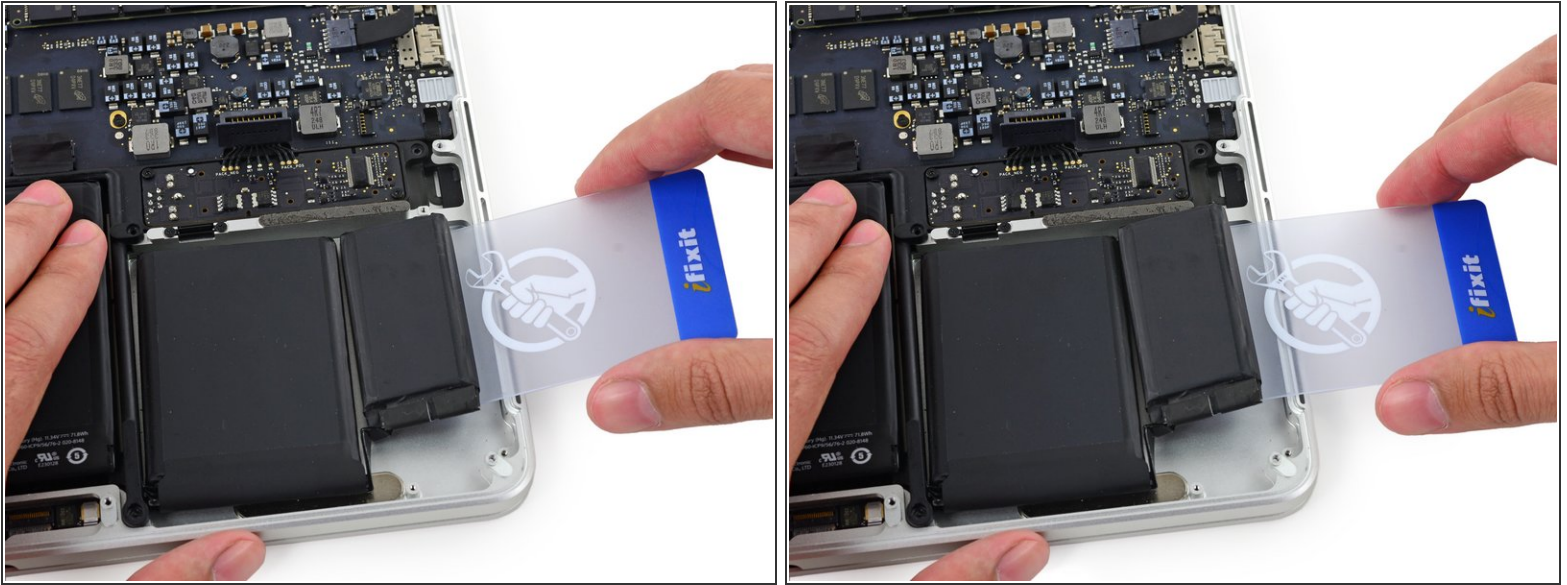
- i** If you don't have a liquid adhesive remover, you'll be using a [hot iOpener](#) to warm and soften a section of the adhesive securing the battery to the upper case, and then carefully prying at that point.
- Use the hot iOpener to cover half of the two right-most battery cells.
 - After about a minute, reheat the iOpener and move it to cover the other half of the right-most battery cells.

Step 24



- Push a plastic card between the right-most battery cell and the upper case, cutting the adhesive between the two.
- ⚠ Throughout this procedure, be careful not to damage any of the battery cells with your tools. A damaged lithium-ion battery may leak dangerous chemicals and/or catch fire. Use only plastic pry tools.
- When using the hot iOpener method, if you encounter significant resistance to prying, stop and use the iOpener to reheat the section you're working on.

Step 25



- Use the plastic card to pry the right-most battery cell up from the rear case.

Step 26



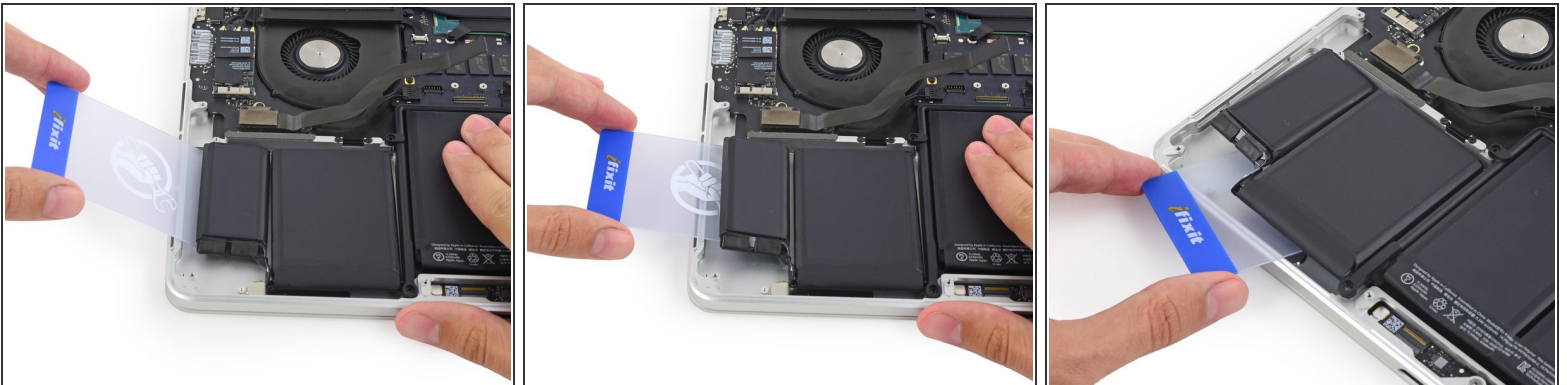
- Repeat this procedure with the adjacent battery cell:
 - Apply a small amount of liquid adhesive remover under the battery cell, and wait 2-3 minutes for it to penetrate and soften the adhesive.
 - Alternatively, re-heat this section with your iOpener if needed.
 - Push a plastic card about an inch between the battery cell and the upper case, and slowly pry the cell up to separate all of the adhesive.

Step 27



- Temporarily leave your plastic card underneath the two rightmost battery cells to prevent them from re-adhering to the upper case.
- If using an iOpener, reheat it and reapply it, this time to the left-most battery cells.
- ❗ Again, leave the iOpener in each position for about a minute, reheating in between, to heat each half of the left-most battery cells.

Step 28



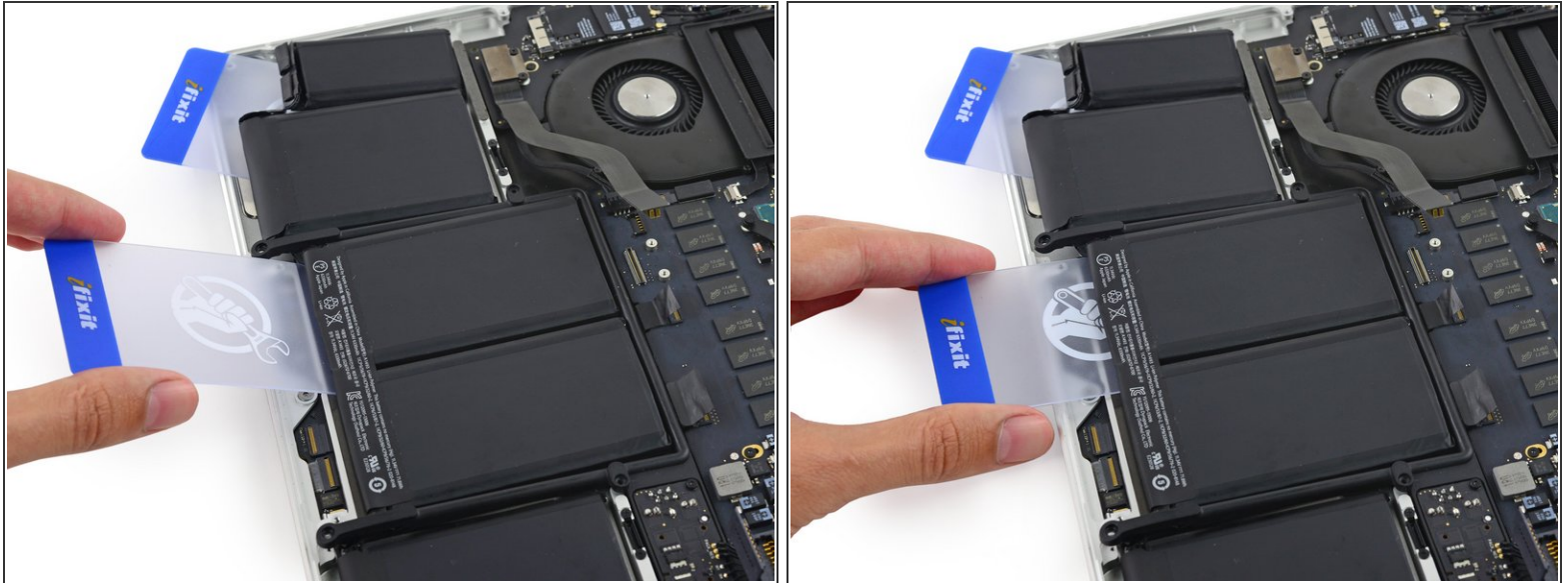
- Repeat the above procedure to separate the two leftmost battery cells from the upper case.
- Remember to apply a small amount of adhesive remover to each battery cell, and wait 2-3 minutes for it to penetrate and soften the adhesive.
- Use a second plastic card to separate the two leftmost battery cells from the upper case.

Step 29



- Leave the second card in the corner between the two left cells.
- ⓘ In the following steps, you can either use a third card, or the card from the right corner. The right corner adhesive should be dry/cool enough that the cells can easily be pulled up again when needed.

Step 30



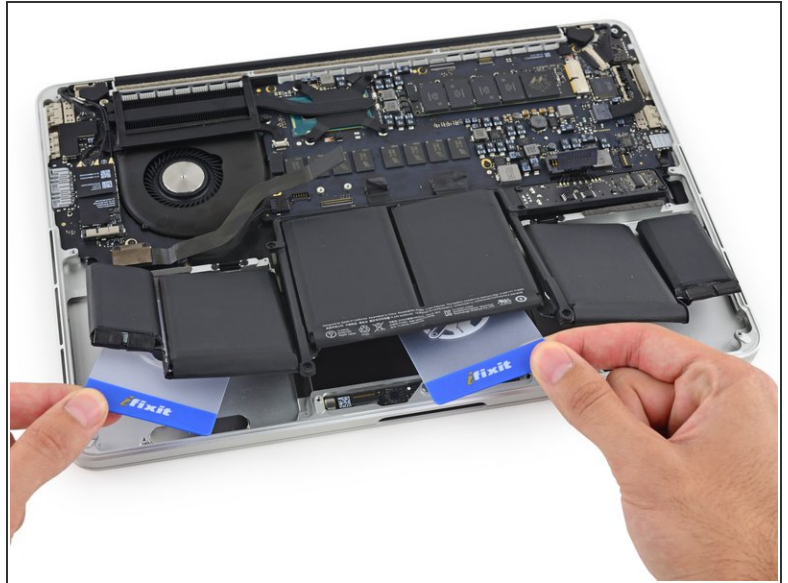
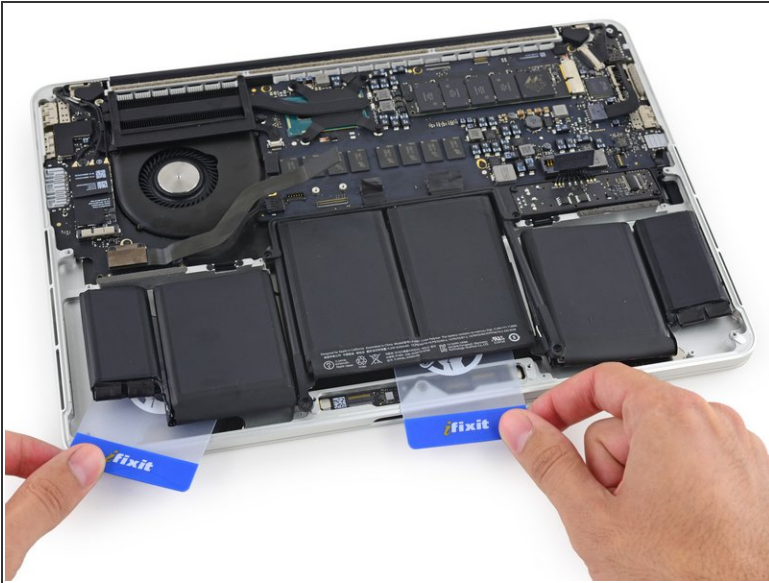
- To separate the adhesive securing the final two, middle battery cells, apply a few more drops of liquid adhesive remover (or your iOpener) to each cell.
 - ⚠ Apply the adhesive remover sparingly, since the trackpad lies beneath this area of the battery.
- It may help to elevate one side of your MacBook Pro a few inches so that the adhesive remover flows in the correct direction, underneath the battery cells. You can use a sturdy book or foam block to prop up one side of your MacBook Pro while you work.
- Insert the card about an inch between the left-center battery cell and the upper case, separating the adhesive between the cell and the case.

Step 31



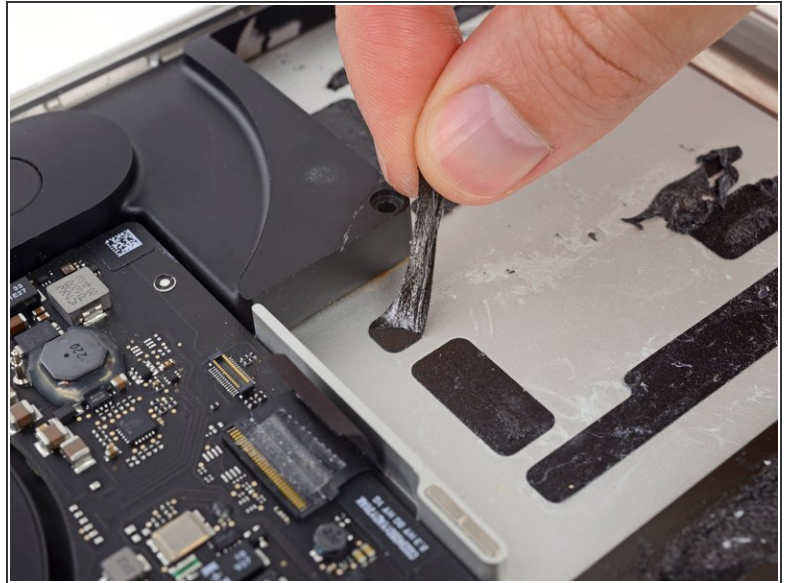
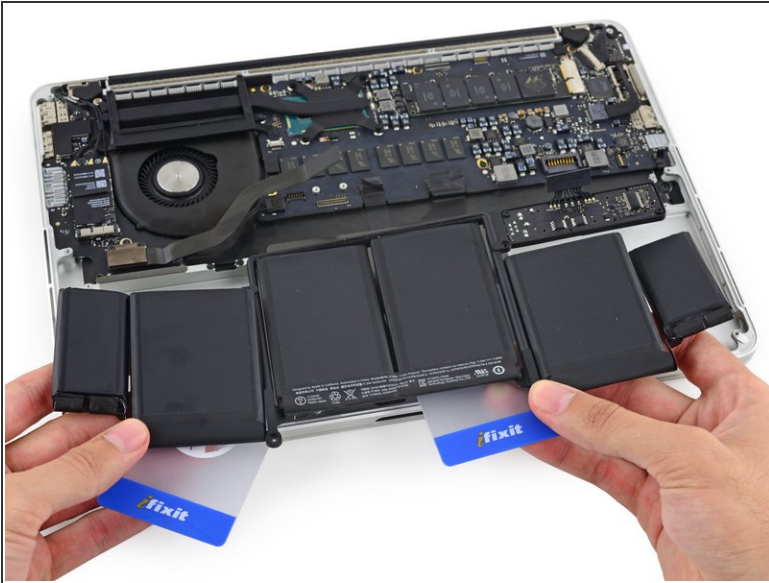
- Pull the card back out and insert it about an inch between the right-center battery cell and the upper case, separating the adhesive between the cell and case.

Step 32



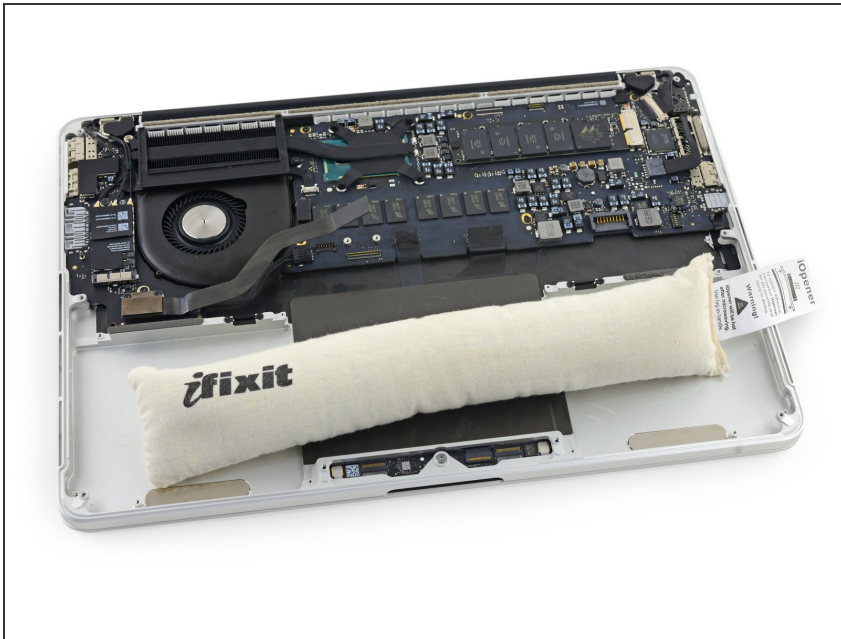
- i** By this point, the outer cells should be free, and you should only encounter resistance from the two center cells. If this is not the case, go back and completely loosen the four outer-most cells from the upper case.
- Pry up on the two center cells to separate the last of the adhesive and lift the battery from the device.

Step 33



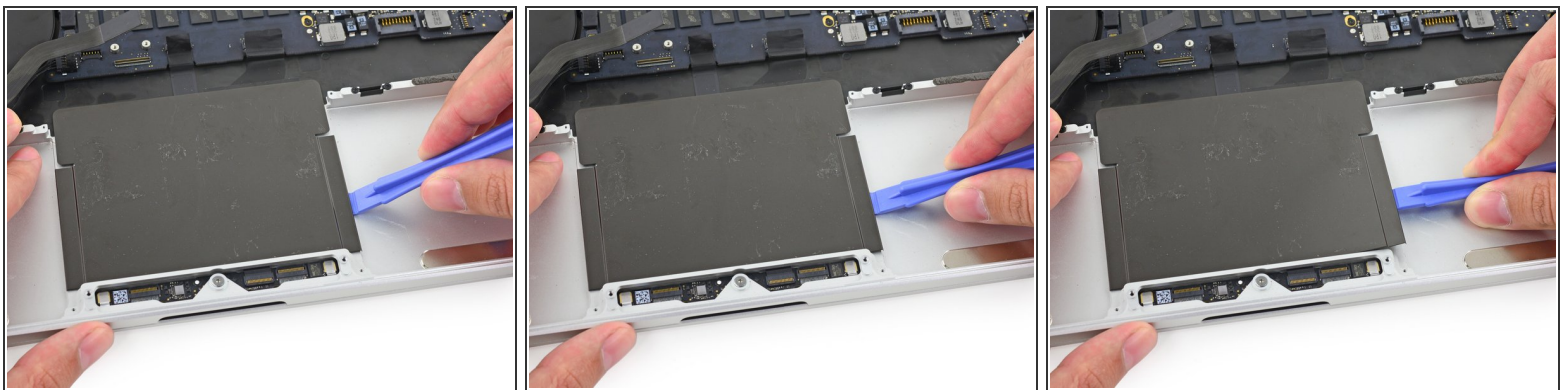
- Remove the battery.
- ✦ Before installing your new battery, remove all the old adhesive from the MacBook Pro's case.
 - With a little luck, you can slowly pull out each strip of adhesive with your fingers.
 - Otherwise, soak each section of adhesive with a bit of adhesive remover for 2-3 minutes, and then scrape it out with an opening pick or one of the other tools in your kit. This can take quite a bit of work, so be patient.
 - Mop up any remaining adhesive remover and give your MacBook Pro a few minutes to air dry.
- ✦ The replacement battery included in your iFixit kit comes with adhesive pre-installed. Test the battery's fit and alignment carefully before peeling off the film covering the adhesive, and then press each cell firmly into place. If any additional films/liners are present that weren't on your original battery, remove them now.
- [Calibrate](#) your newly installed battery: charge it to 100%, and keep charging it for at least 2 more hours. Unplug and use it normally to drain the battery. When you see the low battery warning, save your work, and keep your laptop on until it goes to sleep due to low battery. Wait at least 5 hours, then charge your laptop uninterrupted to 100%.
- ⚠ If you notice any unusual behavior or problems after installing your new battery, you may need to [reset your MacBook Pro's SMC](#).

Step 34 — Trackpad



- Place a reheated iOpener over the trackpad cover plate to soften the adhesive securing it to the upper case.
- ⚠ Be careful **not** to overheat the iOpener during the repair. Always wait at least two minutes before reheating the iOpener.

Step 35



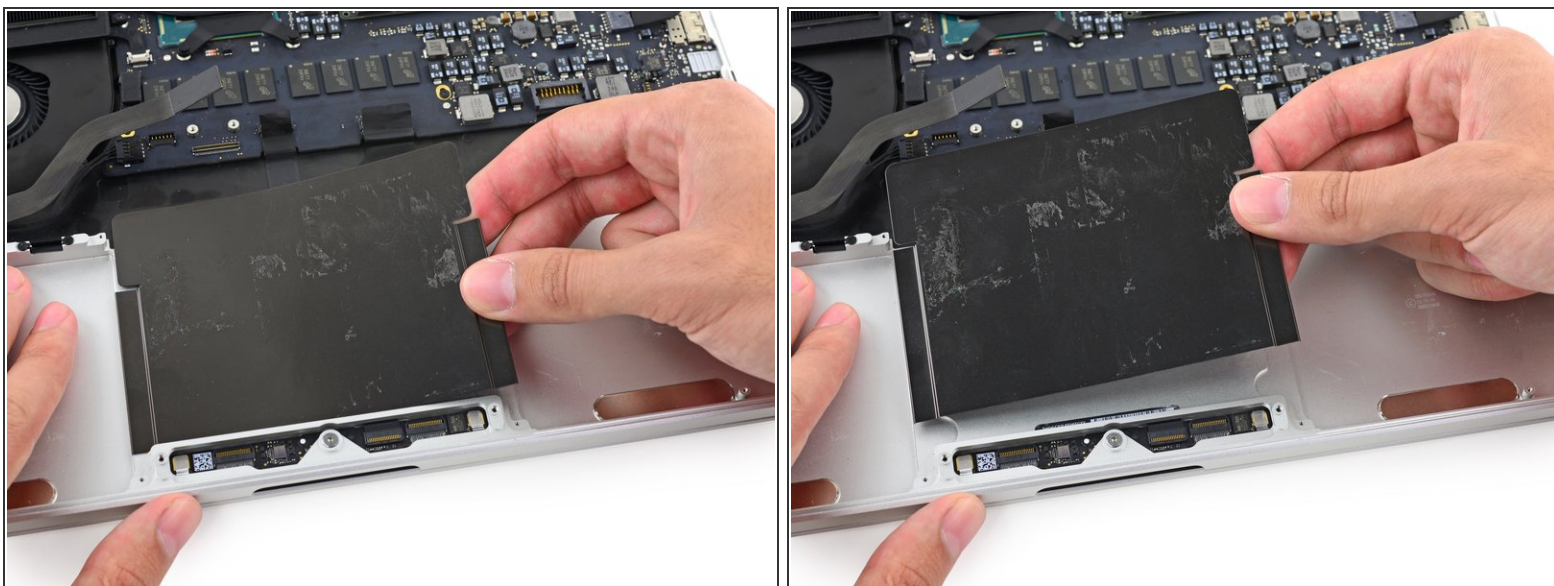
- Use a plastic opening tool to carefully pry the trackpad cover plate up from the upper case.
- ☑ Go slowly and carefully to avoid putting any visible creases in the plate.

Step 36



- Use a plastic opening tool to slowly and carefully peel the trackpad cover plate up off the upper case.

Step 37



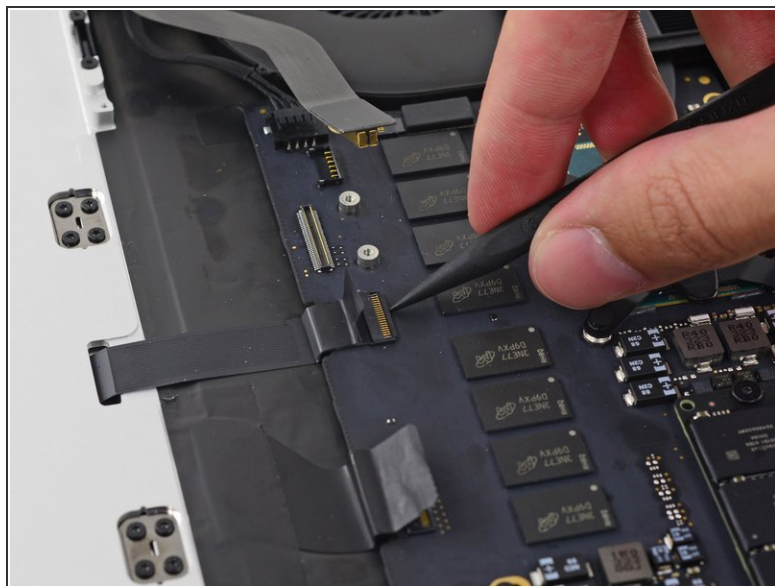
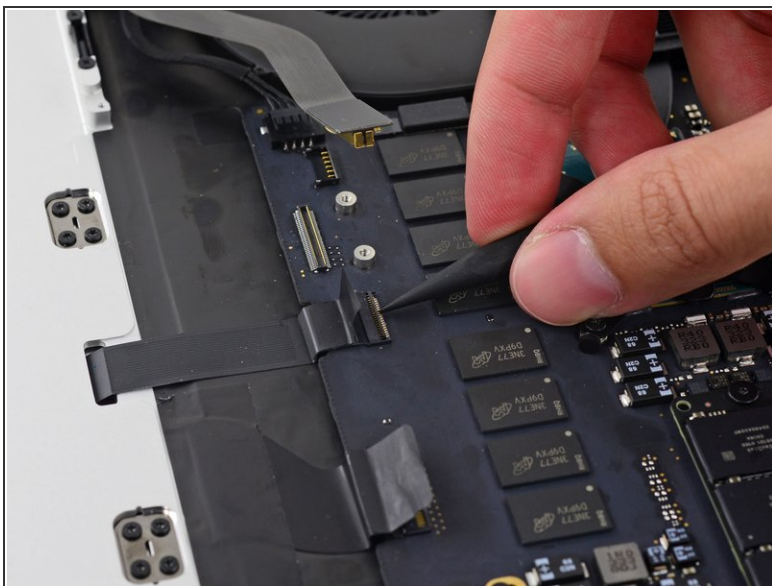
- Gently peel the plate up to remove it.

Step 38



i If necessary, peel back any tape covering the trackpad cable connector.

Step 39



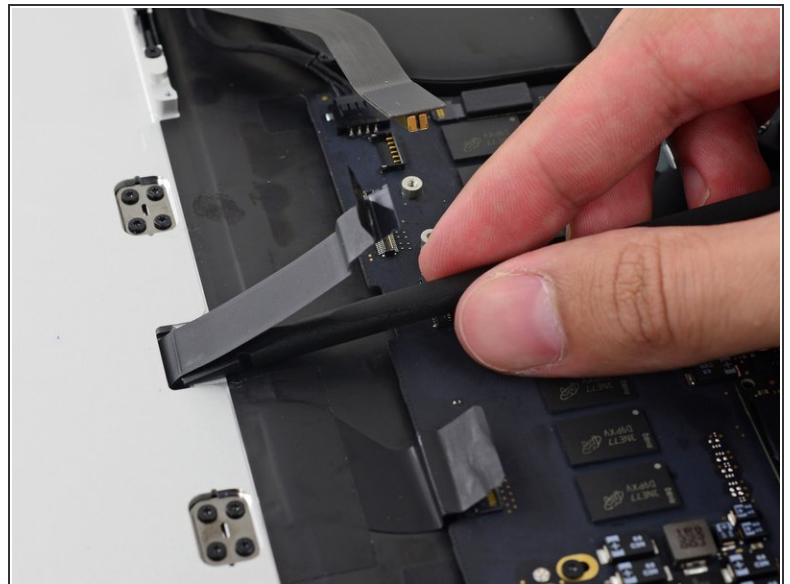
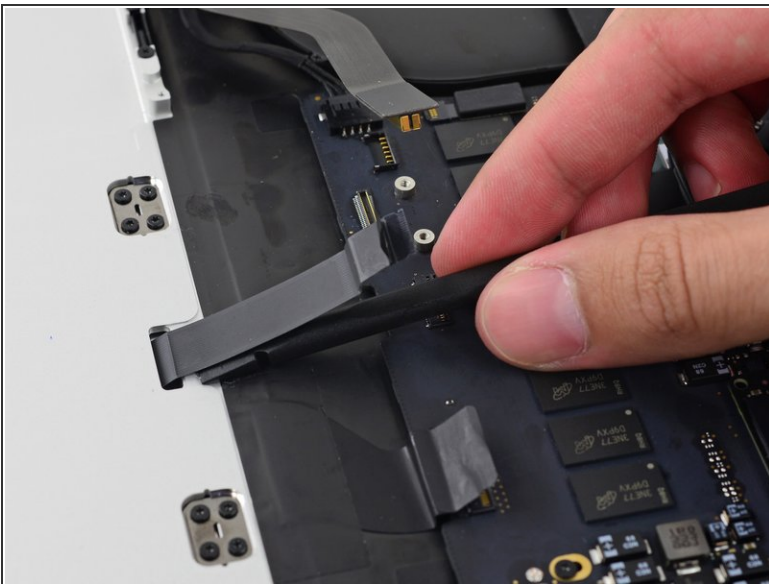
- Use the tip of a spudger to flip the retaining tab on the ZIF connector.

Step 40



- Pull the trackpad ribbon cable straight out of its socket on the logic board.

Step 41



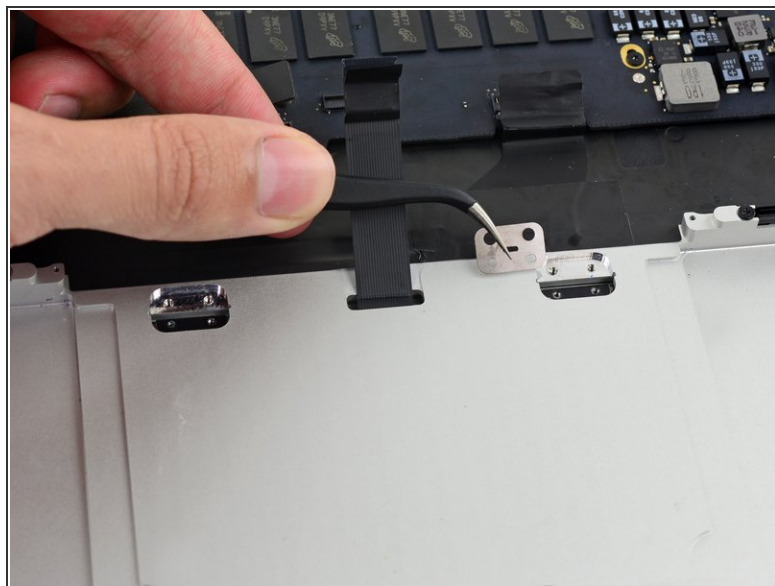
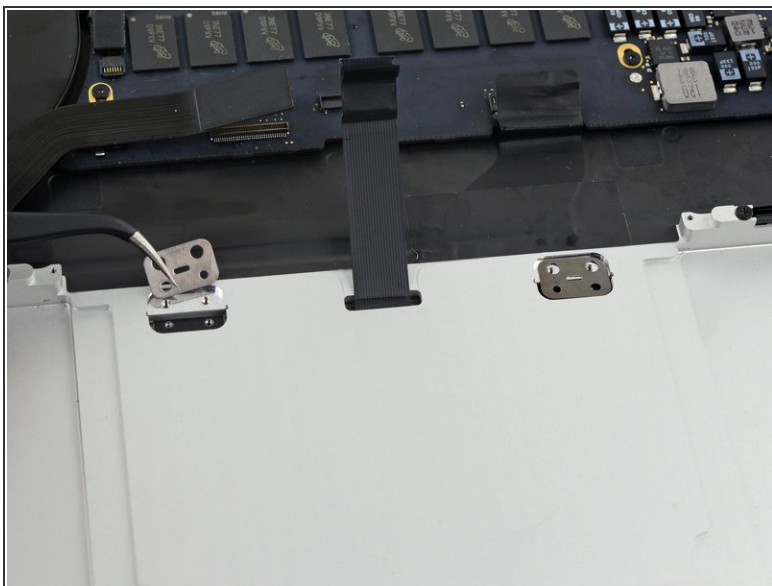
- Wedge the flat end of a spudger underneath the upper case opening where the trackpad ribbon cable passes is routed through.
- Gently pry the trackpad ribbon cable from the adhesive securing it to the upper case.

Step 42



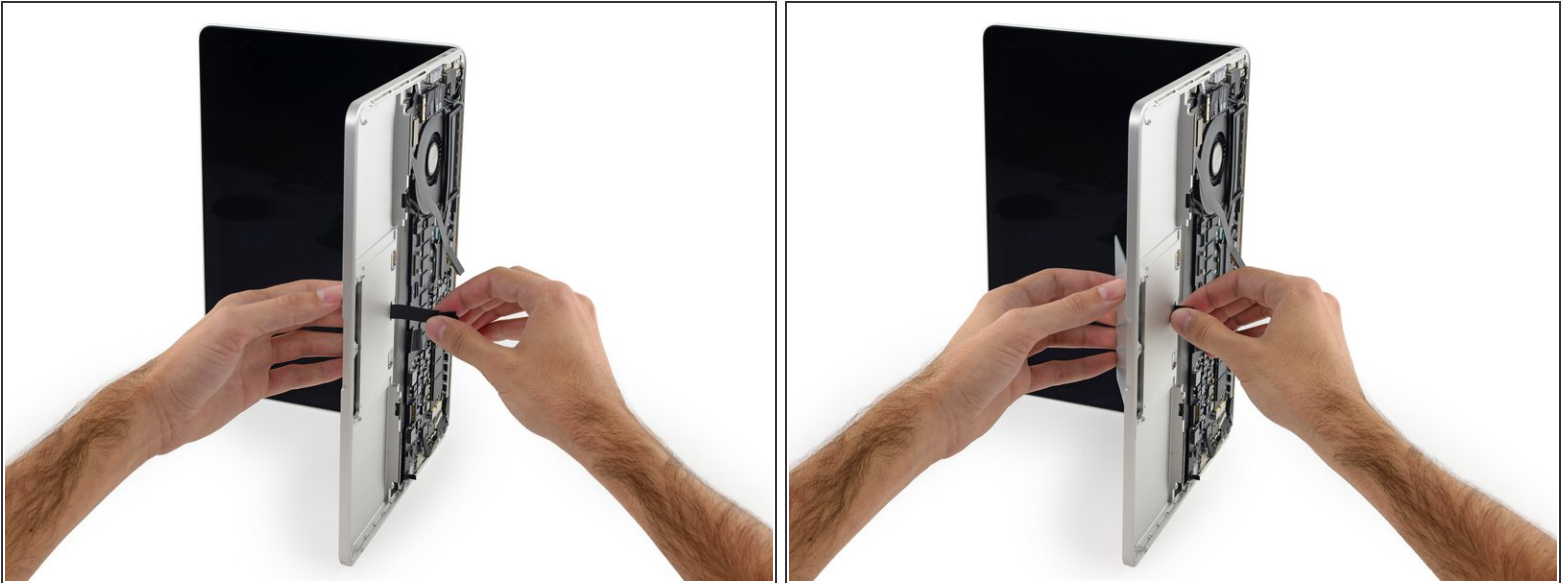
- Remove the following screws securing the trackpad brackets to the trackpad and upper case.
 - Four 2.2 mm T5 Torx screws
 - Four 1.7 mm T5 Torx screws

Step 43



- Use tweezers to remove the two trackpad mounting brackets from the upper case.

Step 44



- ✦ To avoid scratching the display, open the computer about 90° and set it on end.
- Carefully guide the trackpad ribbon cable through the slot cut in the upper case.
- ⓘ This will push the trackpad up out of its recess in the top of the upper case.
- Guide the trackpad out of the upper case with your other hand, so it doesn't fall.

Step 45



- Gently pull the trackpad away from the upper case, being careful not to snag the ribbon cable.

To reassemble your device, follow these instructions in reverse order.

This document was generated on 2020-03-02 02:17:51 PM (MST).

