



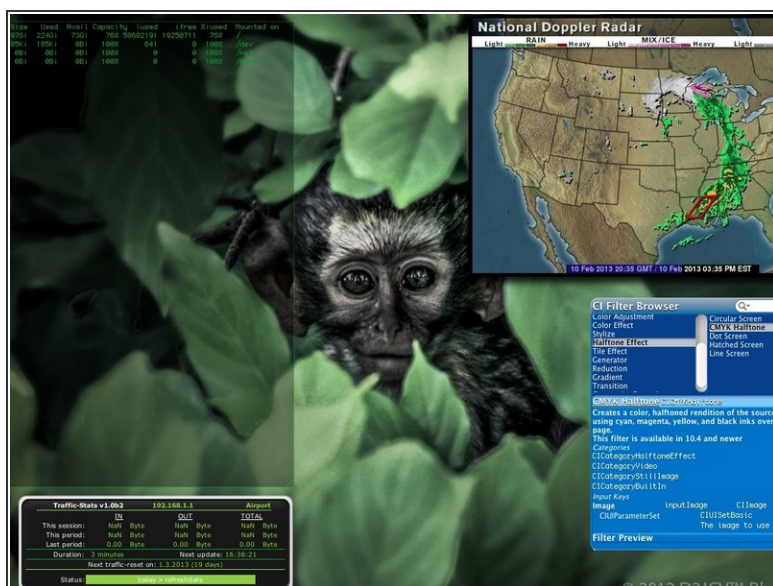
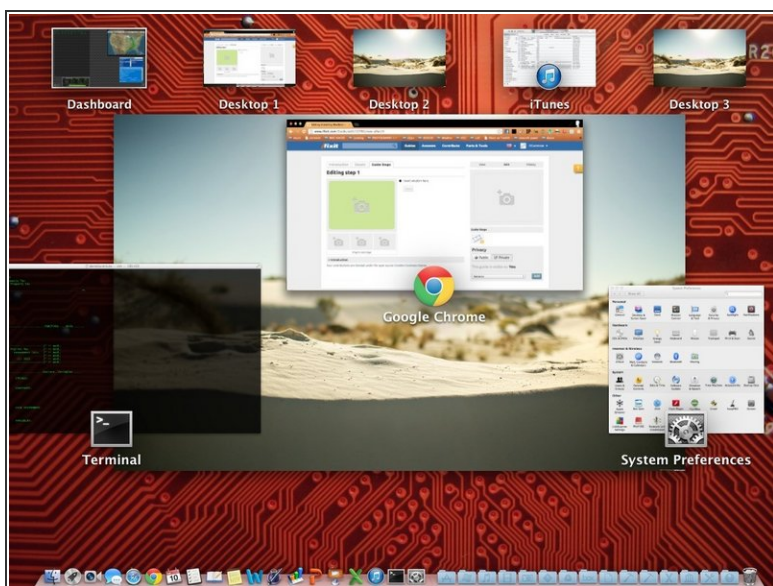
Written By: DCummuta



## INTRODUCTION

Where to go to locate image files responsible for Mission control and dashboard backgrounds. Then I will show you HOW TO SAFELY AND PROPERLY CHANGE THEM!

## Step 1 — Software: Safe Simple Customizing



- As Always: Be Careful. The Files around what you are working with ARE VITAL TO YOU Operating SYSTEM and IT's UI!

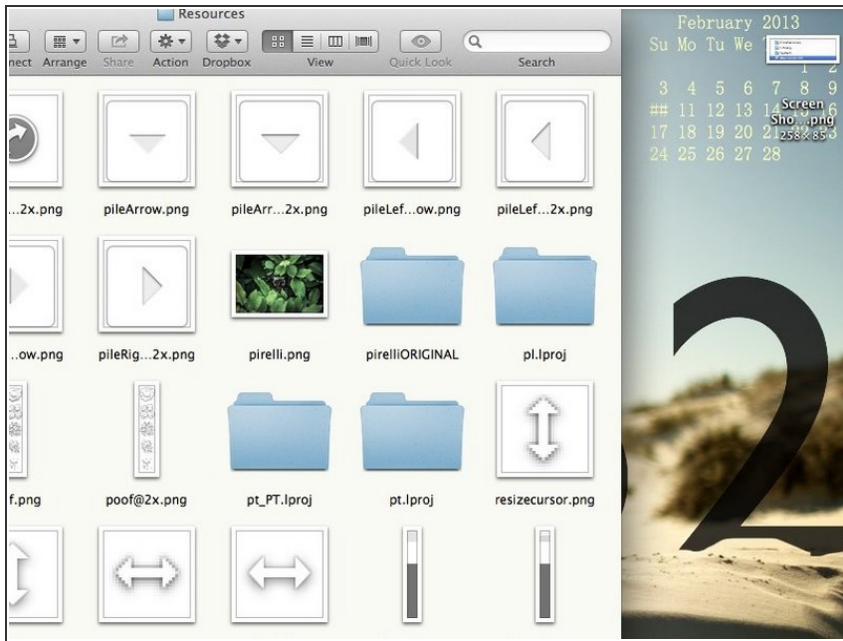
## Step 2



- Open up Finder.
- Navigate to your System Hard Drive (ie: Mine is "Macintosh HD")
- Open "SYSTEM"
- Open "LIBRARY"
- Open "CORE SERVICES"
- NOW BE CAREFUL Some of these Apps are important! Find the app "DOCK.APP" open the menu (right click/two finger click) and click "SHOW PACKAGE CONTENTS"
- Open "CONTENTS"
- AGAIN BE CAREFUL HERE!!! Open "RESOURCES"

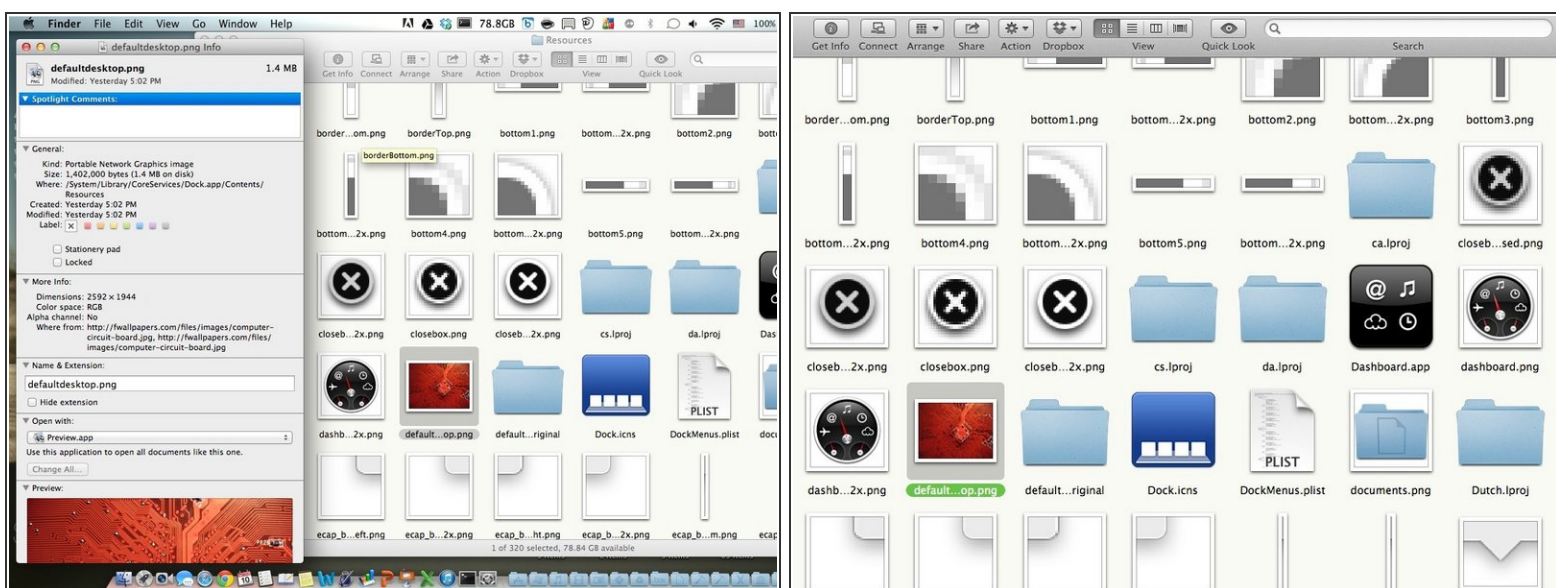


## Step 3



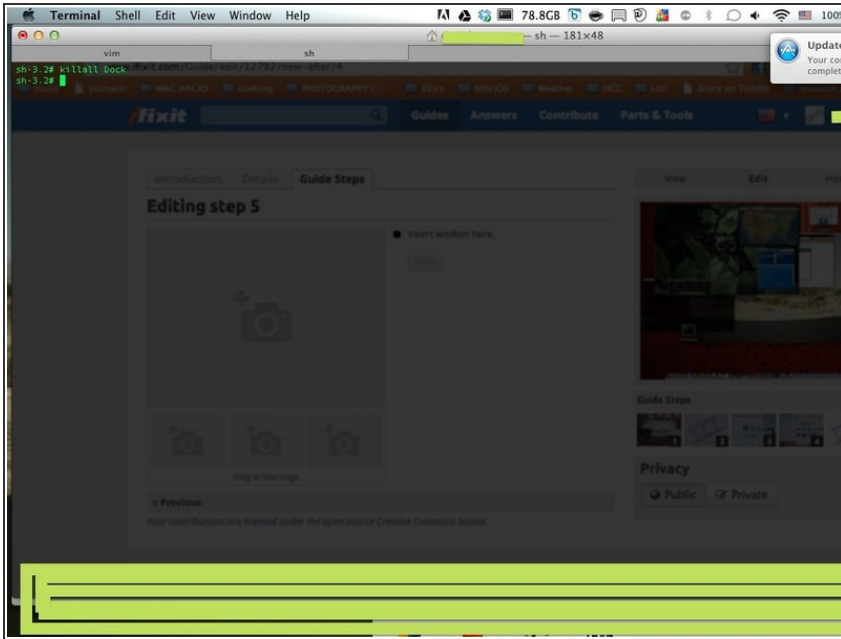
- The Files within this folder are very important for part of your Mac's GUI; So Only mess with the following files mentioned!
- "PIRELLI.png" & PIRELLI@2...  
These files are responsible for you dashboard background and Mission Control Tab for Dashboard(if enabled)
- There is a set Tiling mode in the OS so selecting an image of proper size is crucial.
- Create a new folder called "pirelliORIGINAL" and place these two AND ONLY TWO files here
- Next Take your desired Image and rename it to "pirelli.png"
- Dimensions: I Use 2880 x1900
- And as shown move the image to the RESOURCES FOLDER

## Step 4



- Now for Mission Control:
- Same steps as before instead find the files labeled "defaultdesktop.png" & "defaultdesktop@2x.png"
- put in a new folder labeled "defaultdesktopORIGINAL"
- Chose Your Image (Make sure it is a Higher Resolution Image) and rename it to defaultdesktop.png
- Again Drag the new image to this folder ("RESOURCES")
- So the files are moved and in place, now to activate it...

## Step 5



- open up your terminal
- type the following EXACTLY (case-sensitive) **killall Dock** [press enter]
- \*You may need to have super user permissions for the step above. If so, add the word "sudo" before the command above. (So the whole command will read **sudo killall Dock**)
- 'YOU SHOULD NOW SEE YOUR NEW BACKDROPS!'"

To reassemble your device, follow these instructions in reverse order.