



MacBook Pro 13" Unibody Early 2011 Optical Drive Replacement

Internal Prereq.

Written By: Andrew Bookholt



INTRODUCTION

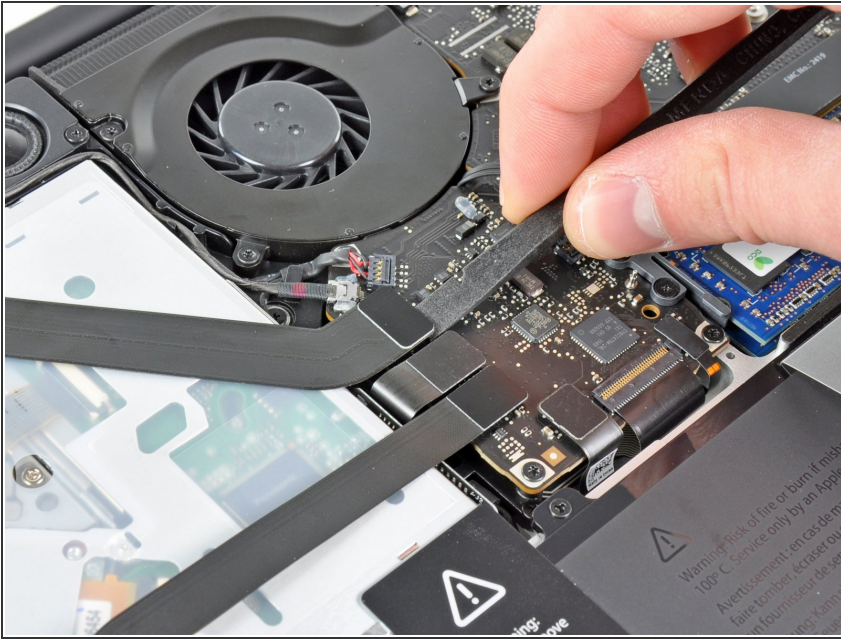
Internal Prereq.



TOOLS:

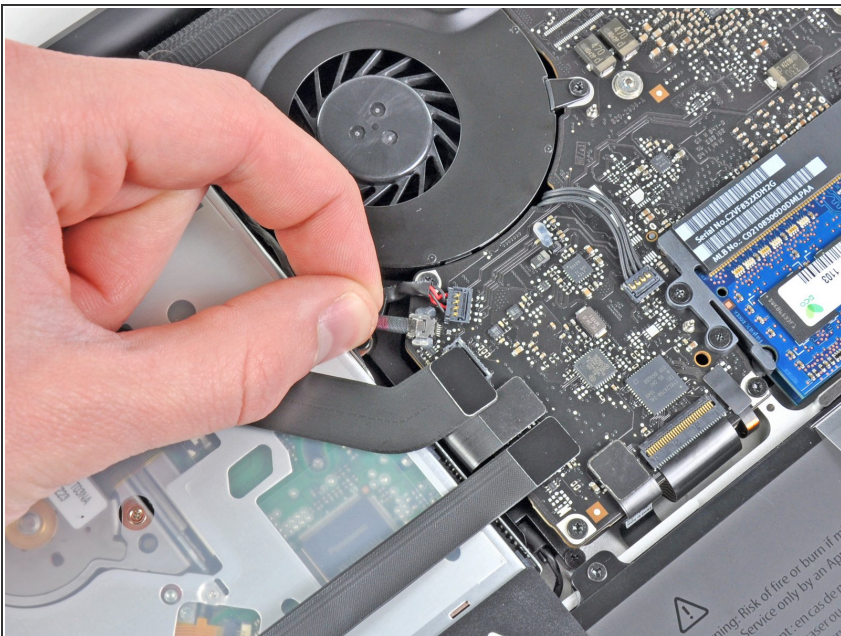
- [Spudger](#) (1)
 - [Phillips #00 Screwdriver](#) (1)
-

Step 1 — Optical Drive



- Use the flat end of a spudger to pry the AirPort/Bluetooth ribbon cable connector up from its socket on the logic board.

Step 2



- Carefully pull the camera cable out of its socket on the logic board.
- ⓘ Though not recommended by iFixit staff, some users opt to omit this step completely. For information on this, see the step comments.
- ⚠ Pull the cable parallel to the face of the logic board. Pulling it upward may damage the logic board or the cable itself.

Step 3



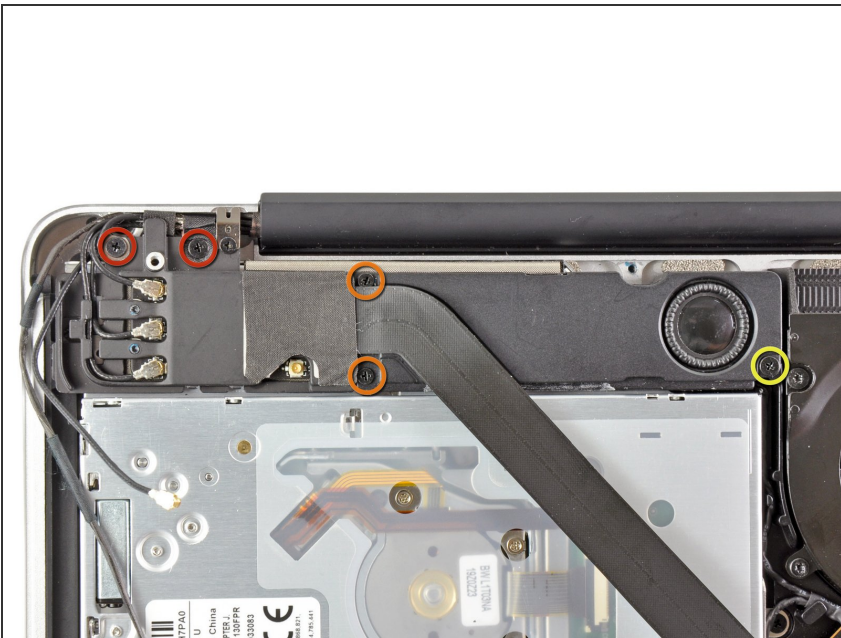
- Carefully move the AirPort/Bluetooth ribbon cable out of the way as you peel the camera cable off the adhesive securing it to the subwoofer and the AirPort/Bluetooth bracket.
- De-route the camera cable out from under the retaining finger molded into the AirPort/Bluetooth bracket.

Step 4



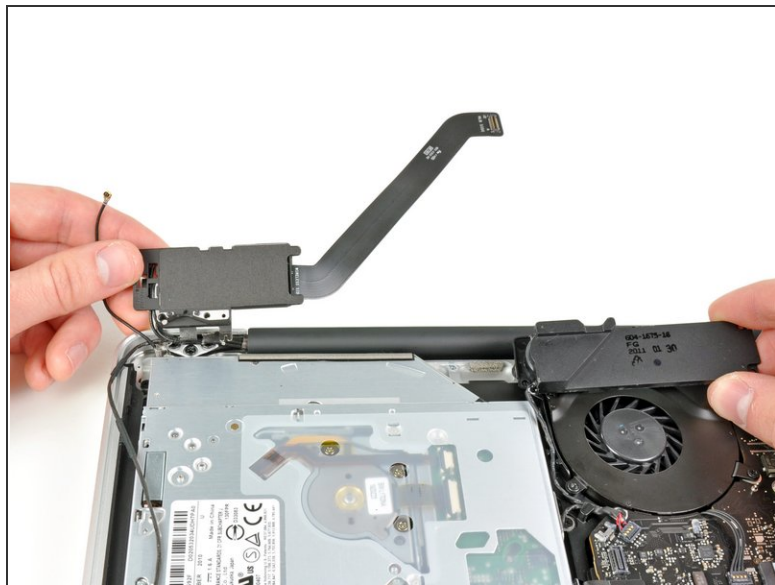
- Use the tip of a spudger to pry the antenna connector closest to the logic board up from its socket on the AirPort/Bluetooth board.
- De-route the antenna cable from under the finger molded into the AirPort/Bluetooth bracket.

Step 5



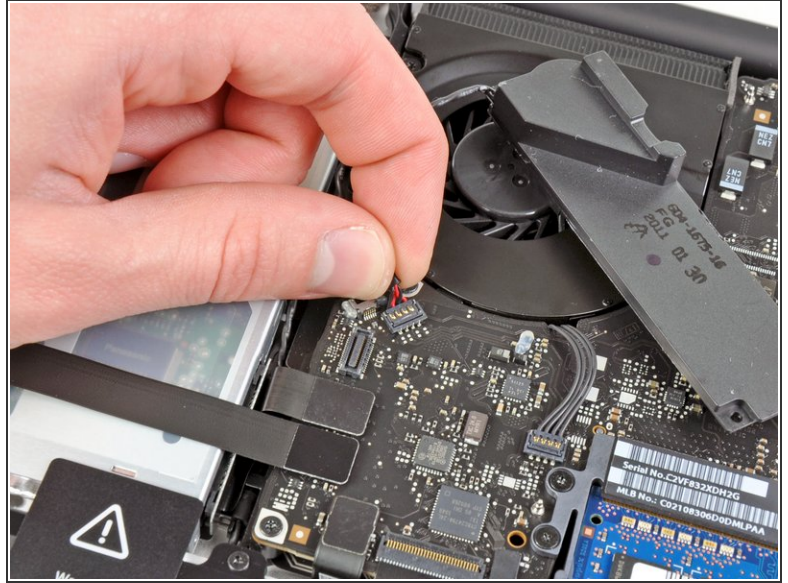
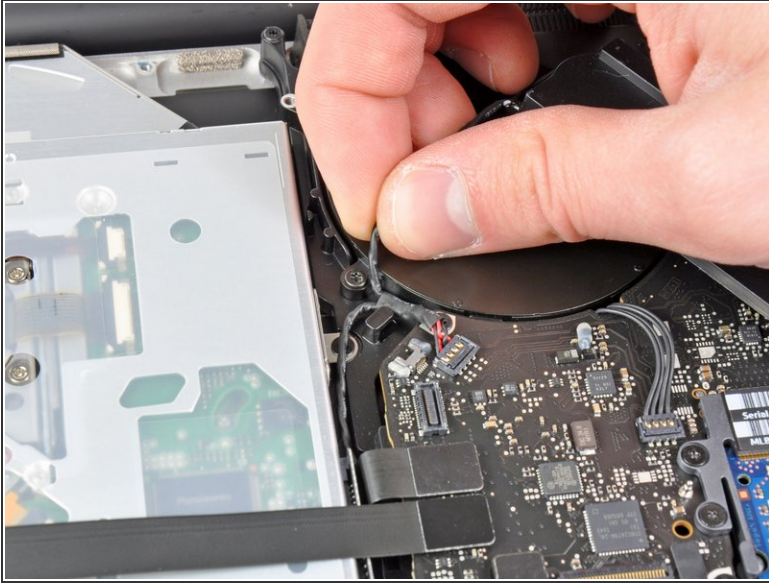
- Remove the following five screws:
 - Two 10.3 mm Phillips screws
 - Two 3.1 mm Phillips screws
 - One 5 mm Phillips screw

Step 6



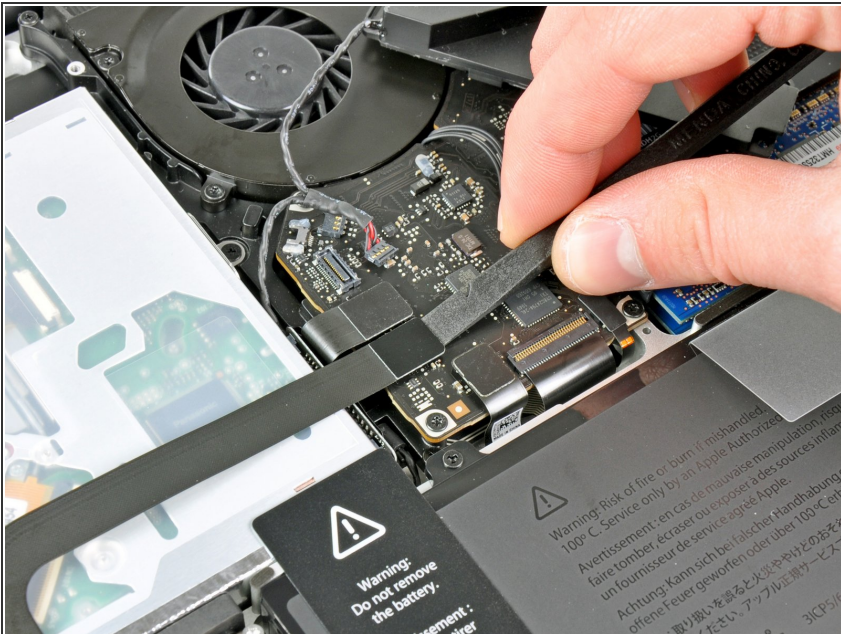
- Pull the AirPort/Bluetooth assembly and the Subwoofer upward near the center of the side of the optical drive until they clear each other.
- Move the AirPort/Bluetooth assembly and the subwoofer away from the top of the optical drive.

Step 7



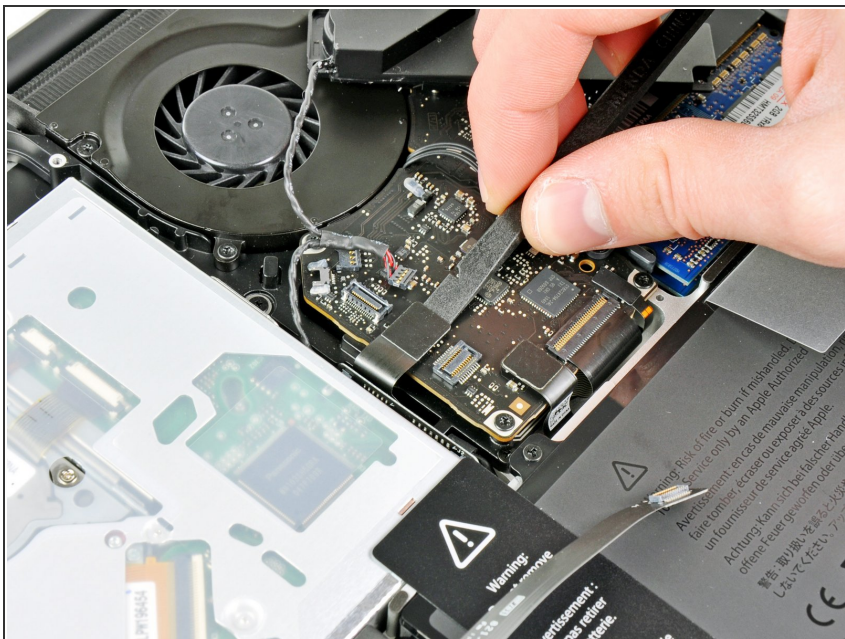
- Pull the right speaker/subwoofer cable out from under the retaining finger near the side of the optical drive.
- Pull the right speaker/subwoofer cable upward to disconnect it from the logic board.

Step 8



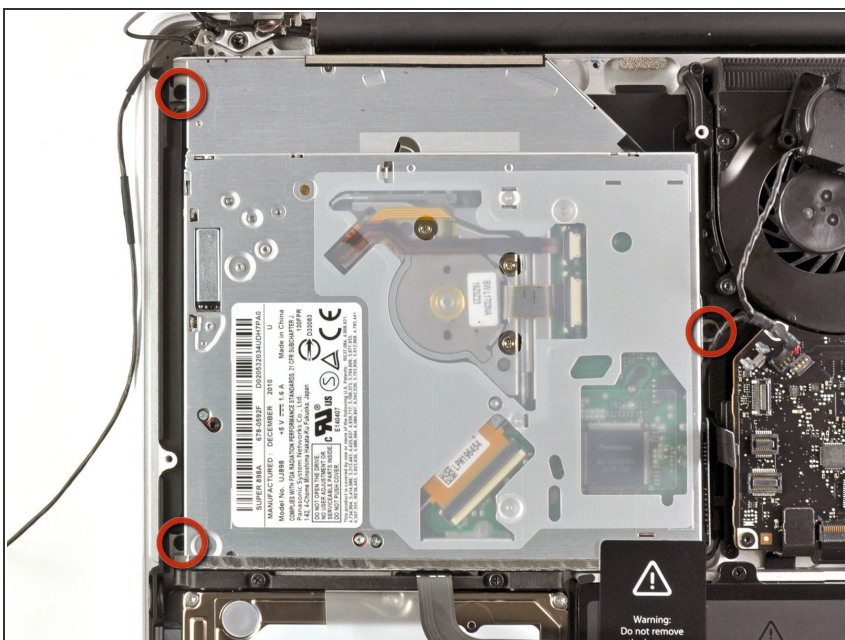
- Use the flat end of a spudger to pry the hard drive cable connector up from its socket on the logic board.
- Bend the hard drive cable away from the optical drive.

Step 9



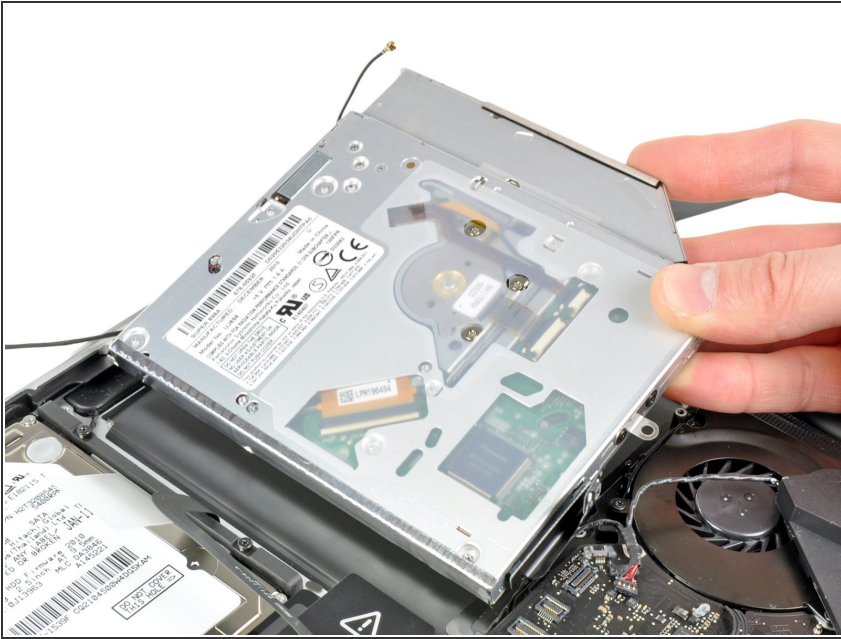
- Use the flat end of a spudger to pry the optical drive connector up from its socket on the logic board.

Step 10



- Remove the three 2.7 mm Phillips screws securing the optical drive to the upper case.

Step 11



- Pull the optical drive upward from its edge closest to the display and remove it from the upper case.

To reassemble your device, follow these instructions in reverse order.