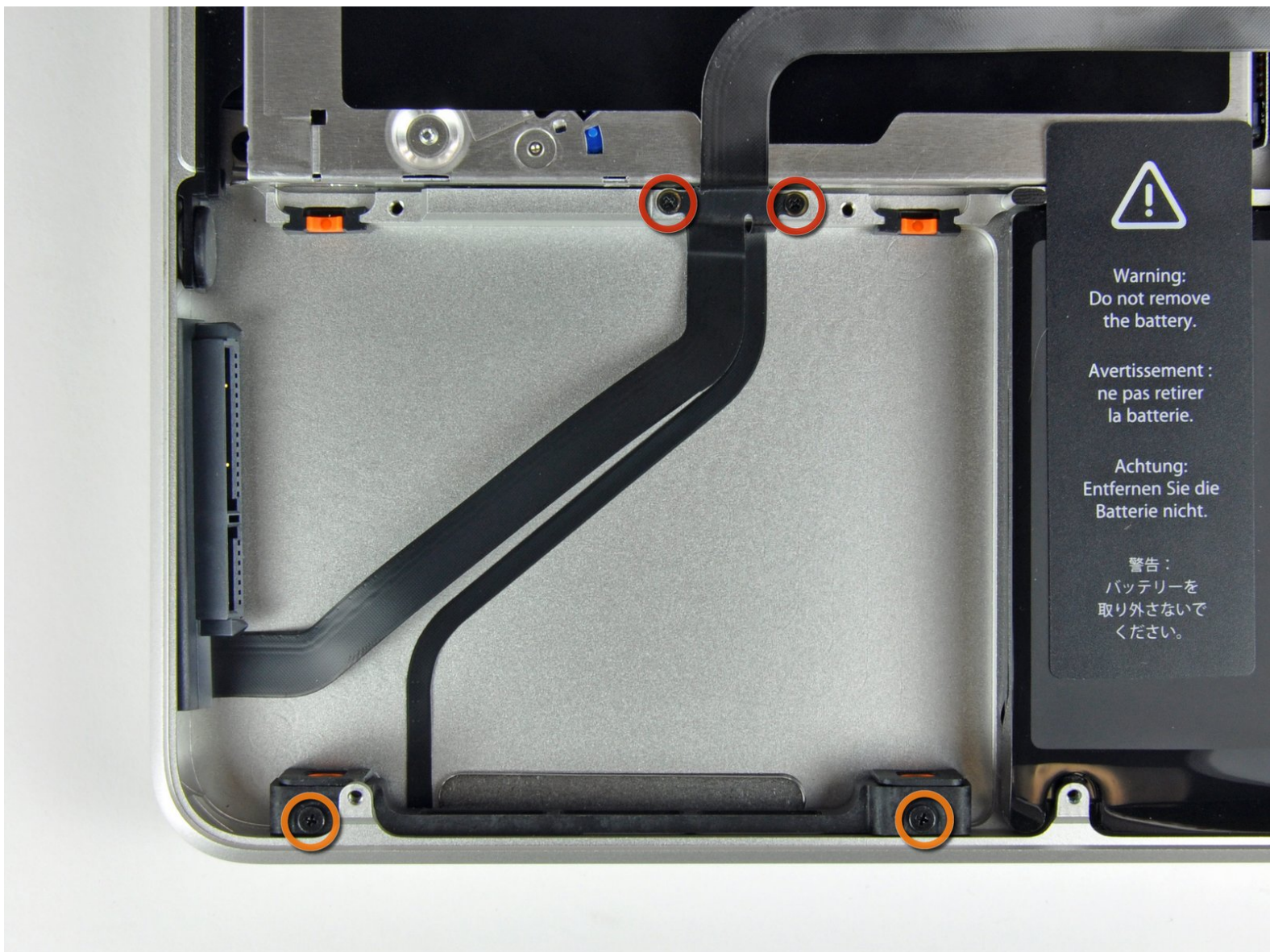




MacBook Pro 13" Unibody Mid 2009 Hard Drive Cable Replacement

Written By: Walter Galan



INTRODUCTION

This guide will show you how to replace your hard drive cable or tighten it if it is loose



TOOLS:

- [Phillips #00 Screwdriver](#) (1)
- [Spudger](#) (1)



PARTS:

- [MacBook Pro 13" Unibody Hard Drive Cable](#) (1)

Step 1 — Lower Case



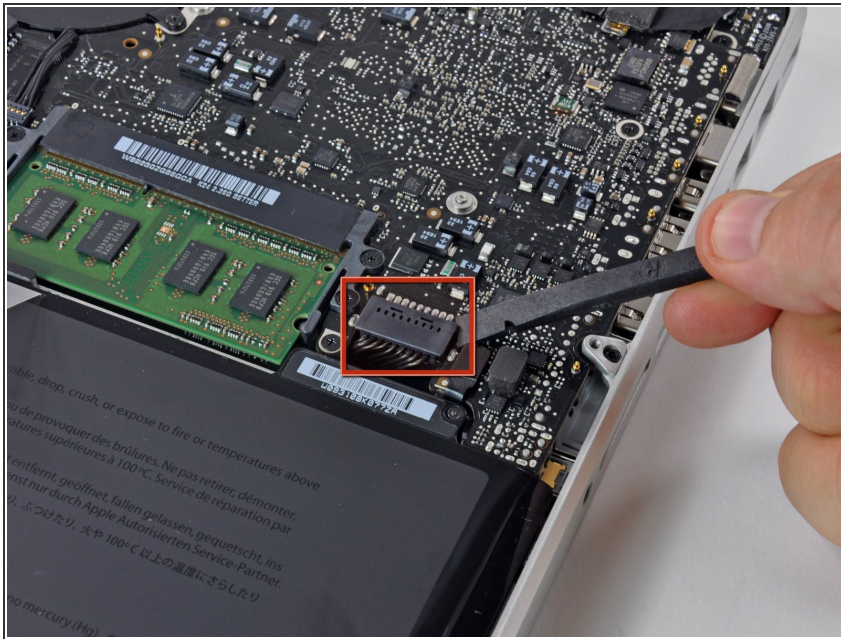
- Remove the following 10 screws securing the lower case to the MacBook Pro 13" Unibody:
 - Seven 3 mm Phillips screws.
 - Three 13.5 mm Phillips screws.

Step 2



- Slightly lift the lower case and push it toward the rear of the computer to free the mounting tabs.

Step 3 — Battery



⚠ For precautionary purposes, we advise that you disconnect the battery connector from the logic board to avoid any electrical discharge.

- Use the flat end of a spudger to lift the battery connector up out of its socket on the logic board.

Step 4 — Hard Drive



- Remove two Phillips screws securing the hard drive bracket to the upper case.

i These screws are captive to the hard drive bracket.

Step 5



- Lift the the retaining bracket out of the upper case.

Step 6



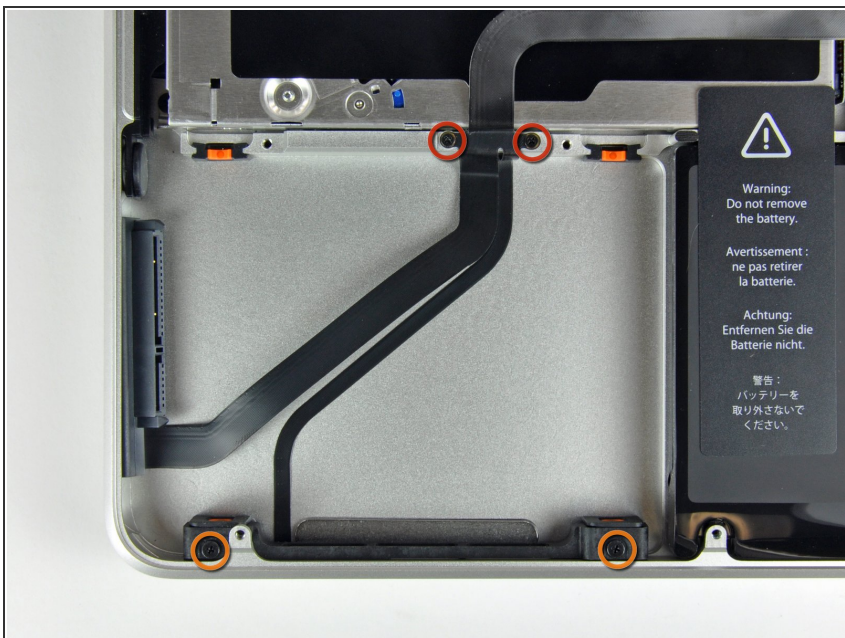
- Lift the hard drive by its pull tab and pull it out of the chassis, minding the cable attaching it to the computer.

Step 7



- Remove the hard drive cable by pulling its connector straight away from the hard drive.

Step 8 — Hard Drive Cable



- Remove the following four screws securing the hard drive and IR sensor cable to the upper case:
 - Two 1.5 mm Phillips screws.
 - Two 9.5 mm Phillips screws.

Step 9



- Slide the hard drive and IR sensor bracket away from the edge of the upper case.
- Carefully peel the hard drive and IR sensor cable from the upper case.

Step 10



- Use the flat end of a spudger to pry the hard drive cable connector up off the logic board.

Step 11



- Lift the hard drive/IR sensor cable assembly out of the upper case.
- ⓘ If your replacement part does not come with the hard drive bracket and indicator light, you will need to pull those off of the part you are removing and install them on the new part.
- ★ Your replacement part may come with several adhesive foam bumpers. These are to ensure a snug fit of both bracket and hard drive. Apply only as needed.

To reassemble your device, follow these instructions in reverse order.