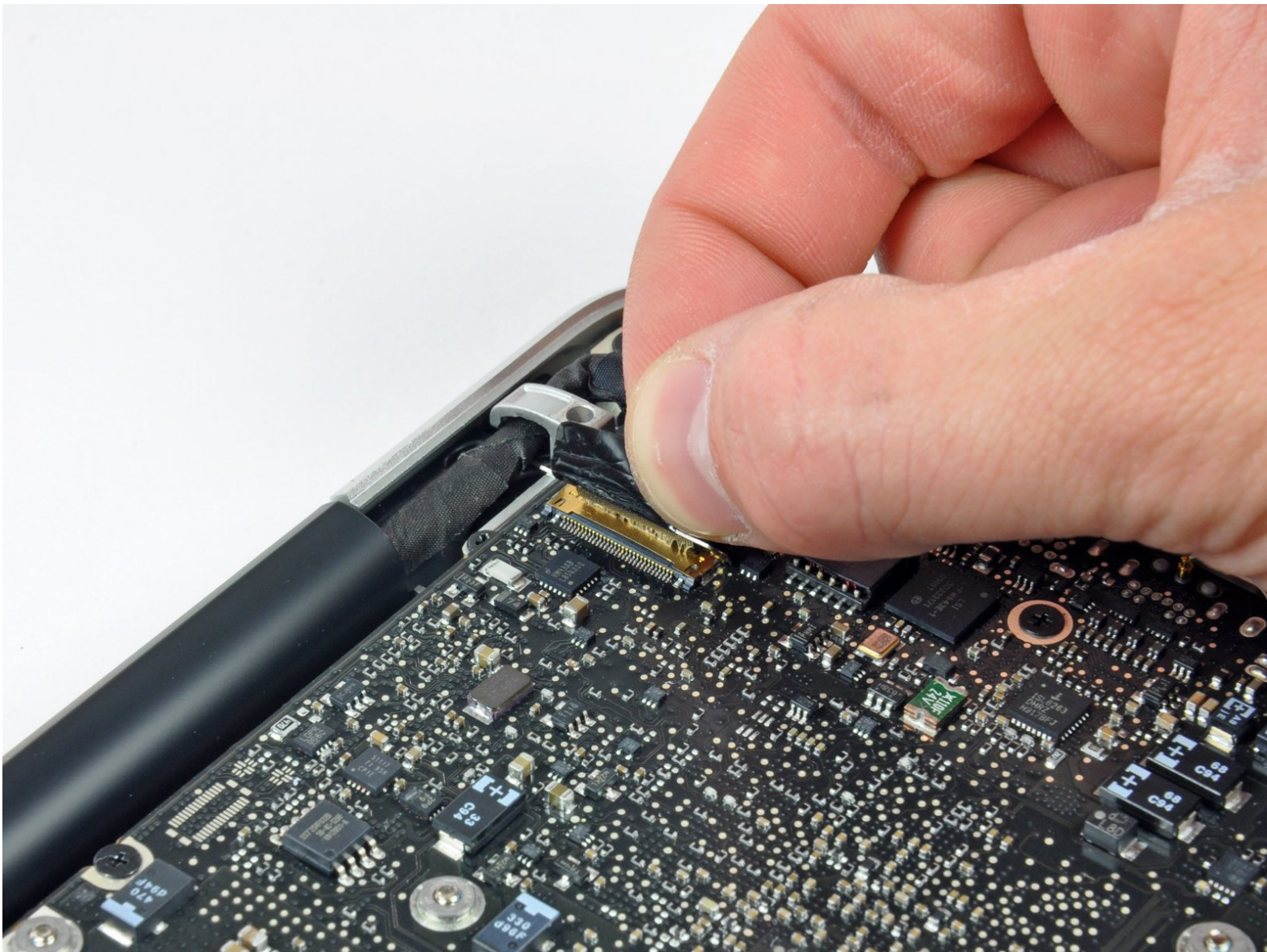




MacBook Pro 13" Unibody Mid 2009 Logic Board Replacement

Written By: Walter Galan



INTRODUCTION

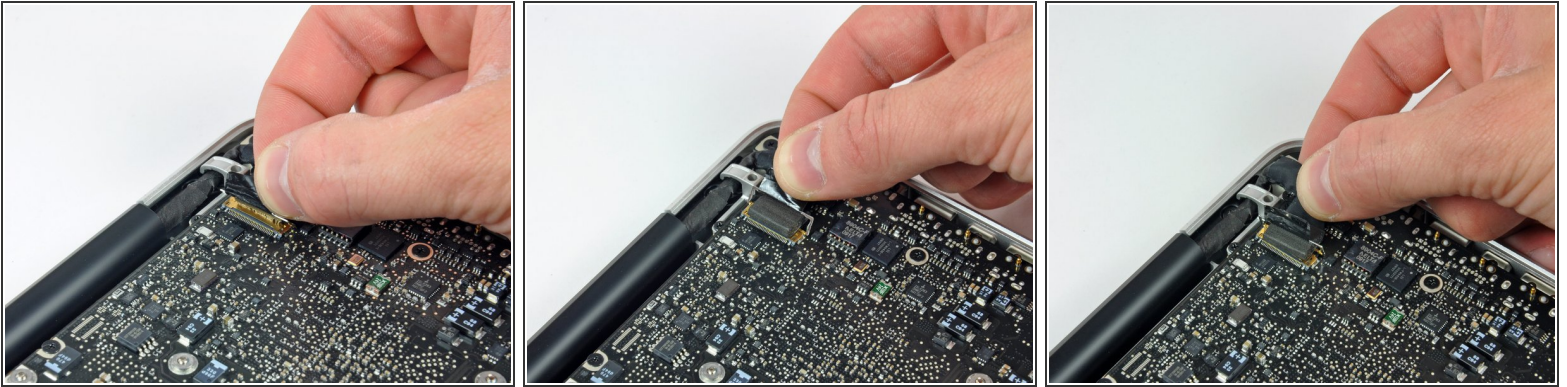
This guide is an internal private guide used as a prereq.



TOOLS:

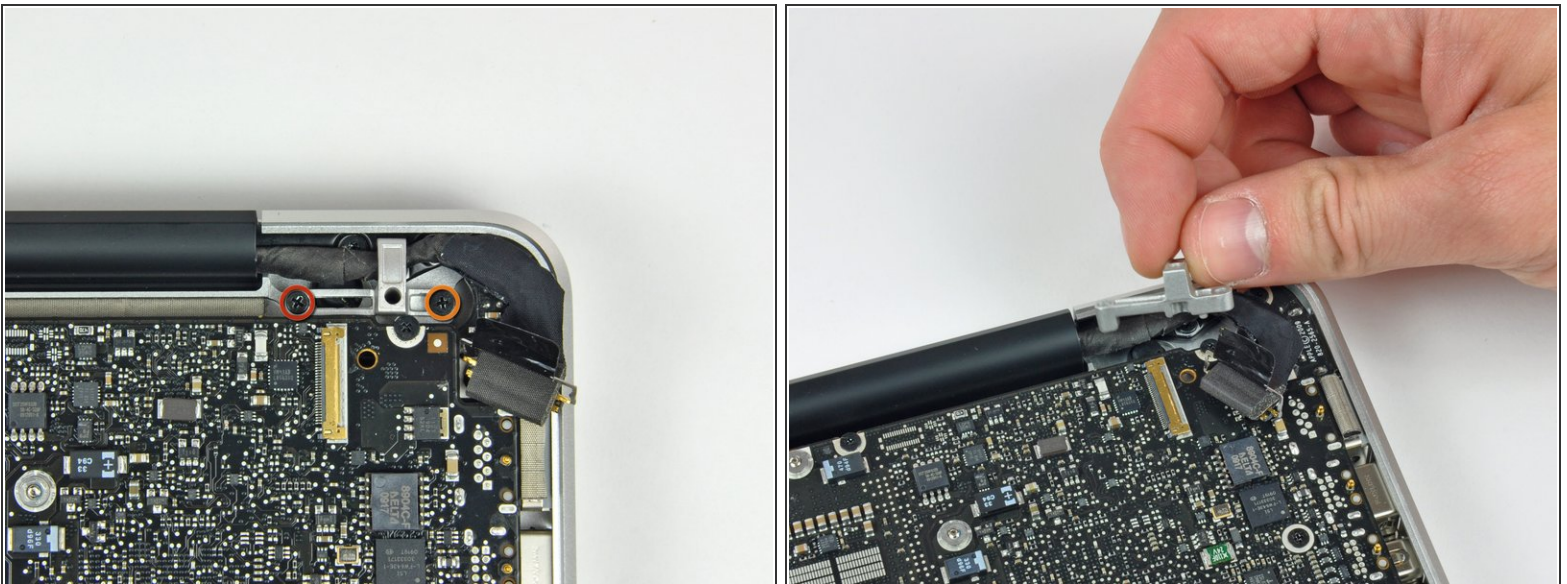
- [Tri-point Y0 Screwdriver](#) (1)
 - [Phillips #00 Screwdriver](#) (1)
-

Step 1 — Logic Board



- Grab the plastic pull tab secured to the display data cable lock, and rotate it toward the DC-in side of the computer.
- Pull the display data cable connector straight away from its socket, towards the DC-in side of the computer.

Step 2



- Remove the following two screws securing the display data cable bracket to the upper case:
 - One 7 mm Phillips.
 - One 5 mm Phillips.
- Lift the display data cable bracket out of the upper case.

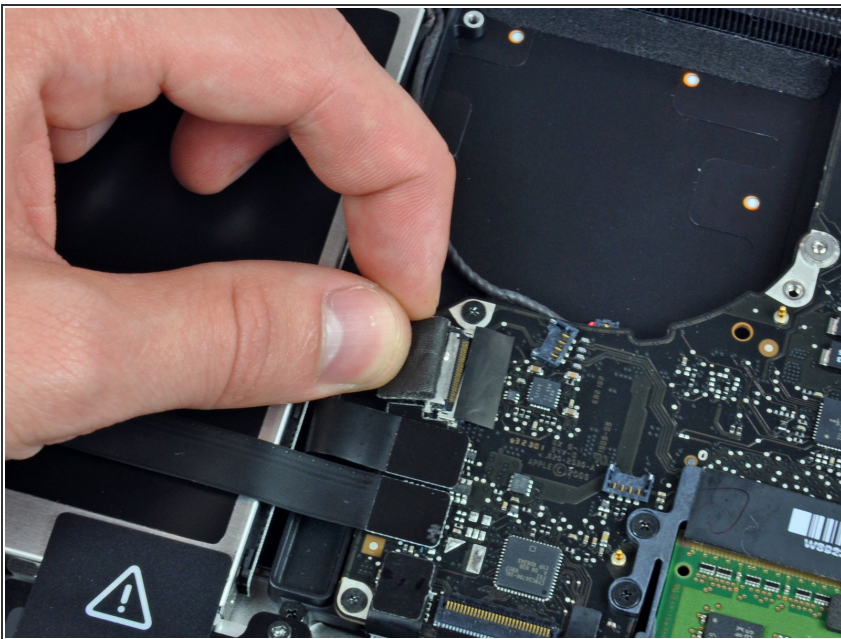
This document was generated on 2019-10-02 12:14:31 PM (MST).

Step 3



- Use the flat end of a spudger to pry the subwoofer and right speaker connector up off the logic board.

Step 4



- ⚠ In this step you will disconnect the camera cable. Most machines will have a small self adhesive plastic retainer stuck to the logic board to keep the connector in place. Before disconnecting the cable, be sure this retainer is moved out of the way.
- Pull the camera cable connector toward the optical drive to disconnect it from the logic board.

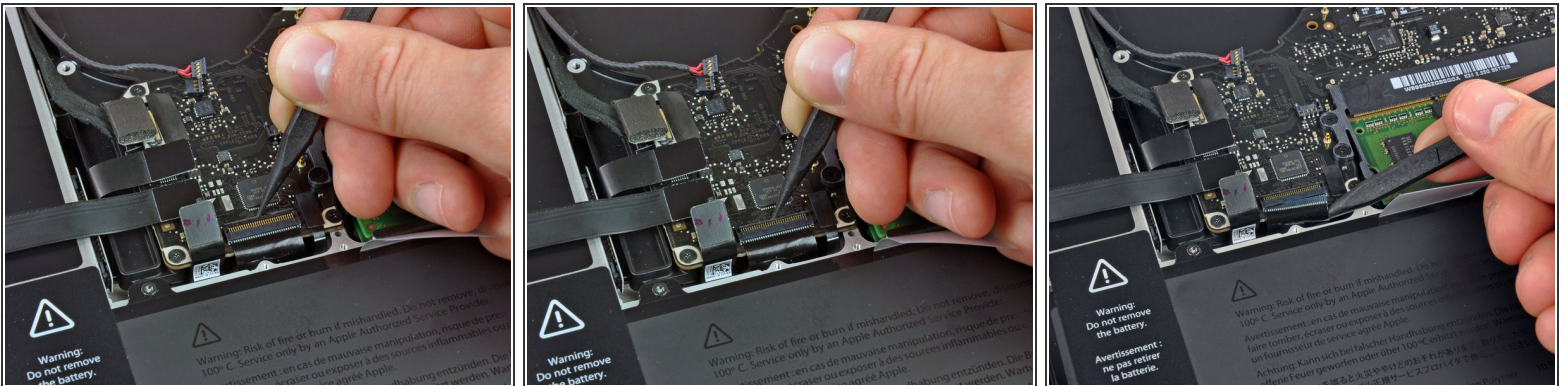
- i** This socket is metal and easily bent. Be sure to align the connector with its socket on the logic board before mating the two pieces.

Step 5



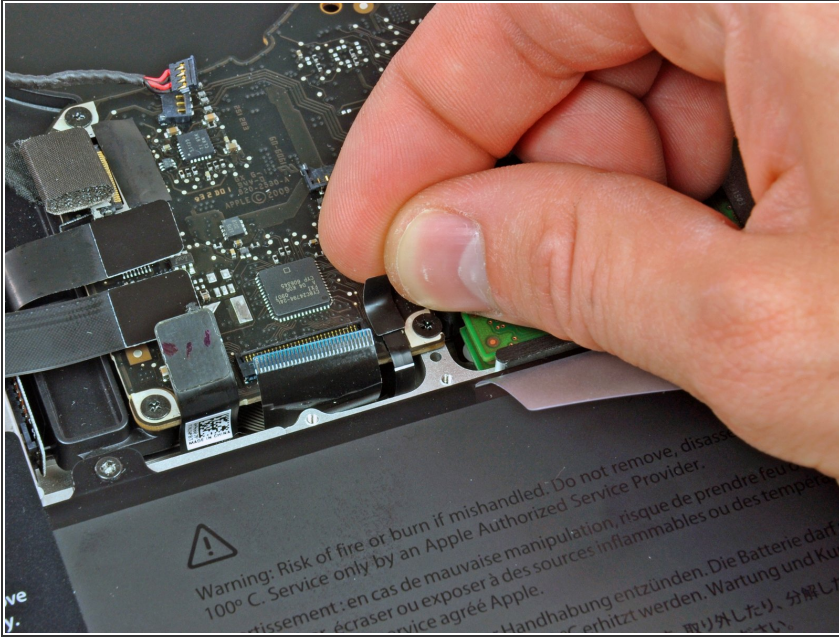
- Use the flat end of a spudger to pry the optical drive, hard drive, and trackpad cable connectors up off the logic board.

Step 6



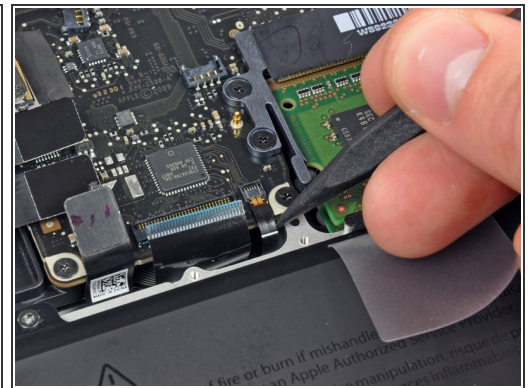
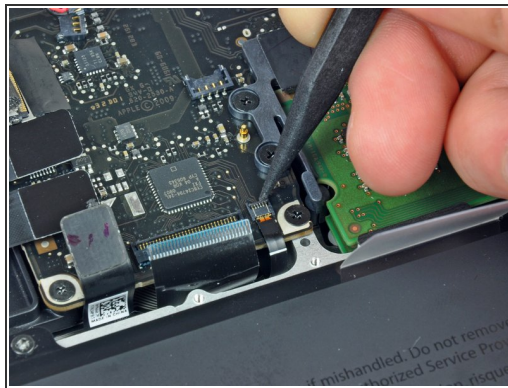
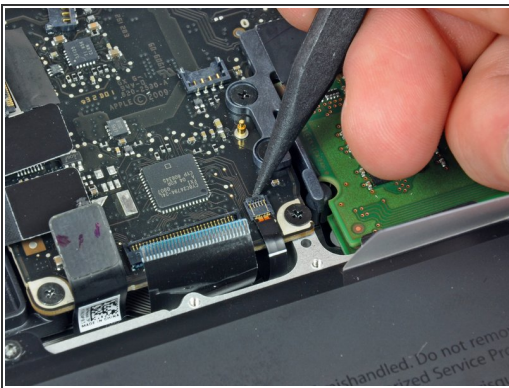
- Use your fingernail or the tip of a spudger to flip up the cable retaining flap on the ZIF socket for the keyboard ribbon cable.
- Use your spudger to slide the keyboard ribbon cable out of its socket.

Step 7



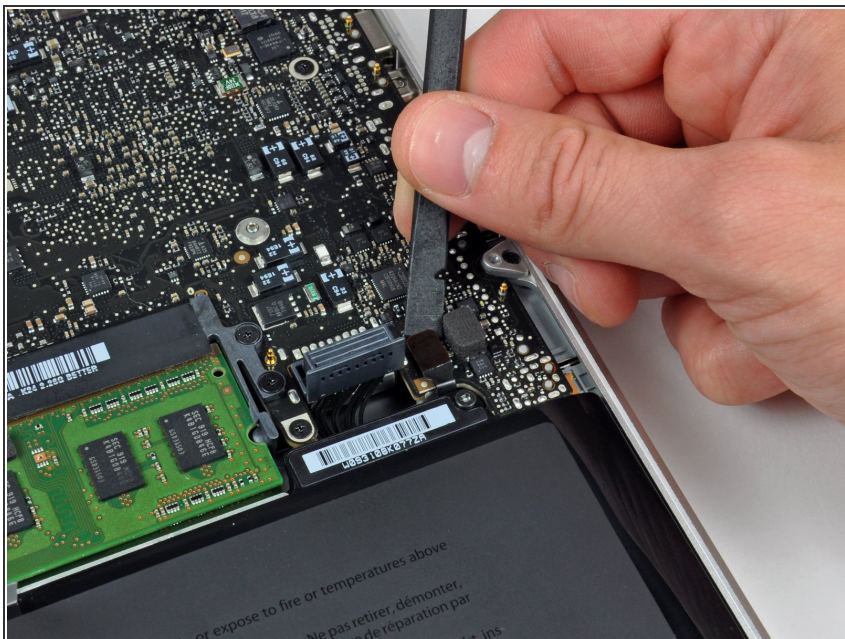
- Peel the small strip of black tape off the keyboard backlight ribbon cable socket.

Step 8



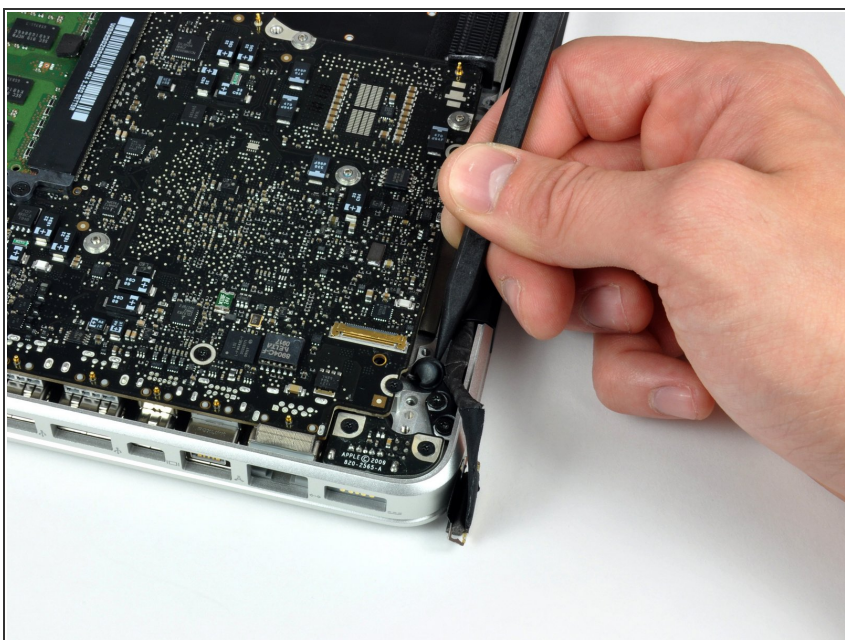
- Use the tip of a spudger to flip up the cable retaining flap on the ZIF socket for the keyboard backlight ribbon cable.
- Use your spudger to slide the keyboard backlight ribbon cable out of its socket.

Step 9



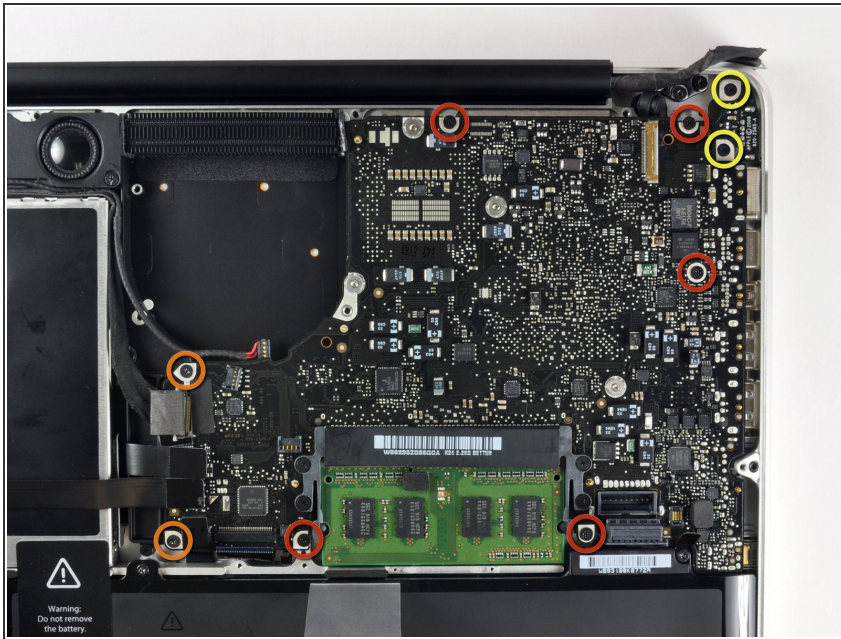
- Use the flat end of a spudger to pry the battery indicator cable connector up off the logic board.

Step 10



- Use the tip of a spudger to pry the microphone off the adhesive attaching it to the upper case.

Step 11



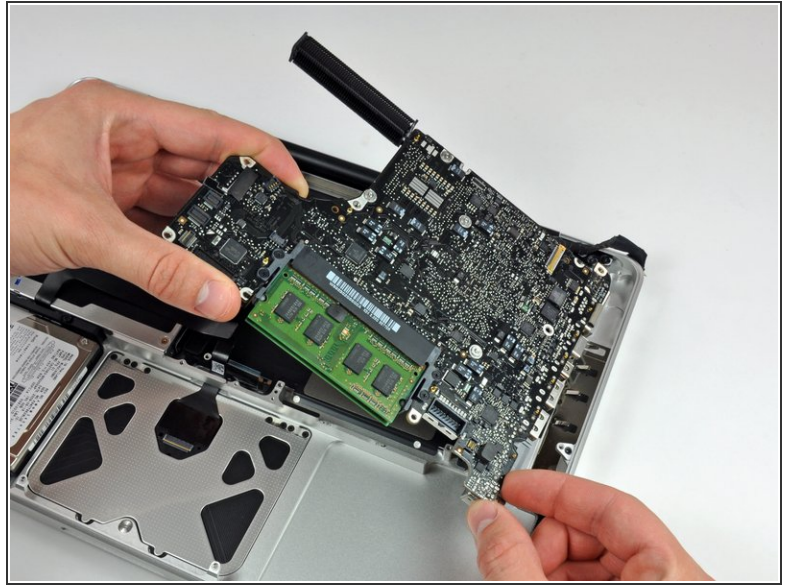
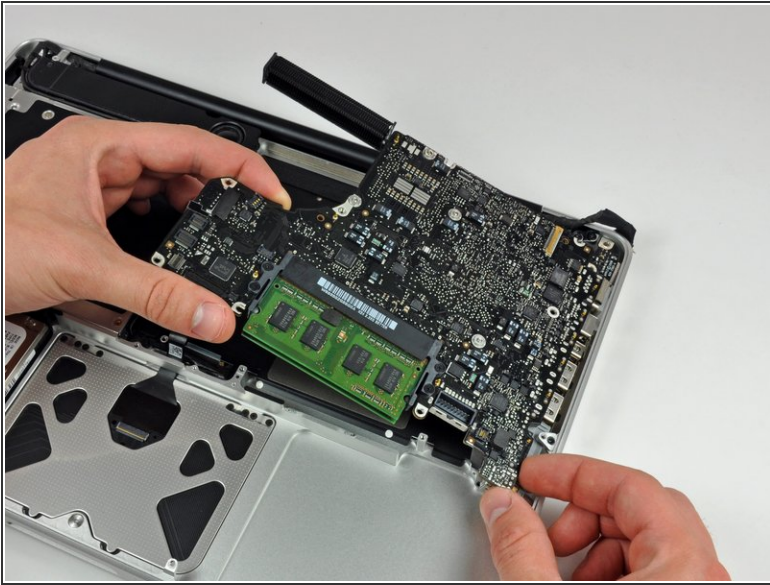
- Remove the following screws:
 - Five 3.1 mm Phillips.
 - Two 3.9 mm Phillips.
 - Two 7 mm Phillips from the DC-in board.

Step 12



- Remove the following Tri-point screws securing the battery to the upper case:
 - One 5.5 mm Tri-point screw.
 - One 13.5 mm Tri-point screw.
- Lift the battery out of the upper case.

Step 13



- Lift the logic board from its left edge and raise it until the ports clear the side of the upper case.
- Pull the logic board away from the side of the upper case and remove it, minding the DC-in board that may get caught.



Be careful not to rip out the fragile connector plug of the microphone assembly.

To reassemble your device, follow these instructions in reverse order.