



# MacBook Pro 13" Unibody Mid 2010 Battery Replacement

Replace the battery in your MacBook Pro 13" Unibody Mid 2010.

Written By: Walter Galan



## INTRODUCTION

Replace the battery in your MacBook Pro 13" Unibody Mid 2010. If your battery is swollen, [take appropriate precautions](#).



### TOOLS:

- [Phillips #00 Screwdriver](#) (1)
- [Spudger](#) (1)
- [Tri-point Y0 Screwdriver](#) (1)



### PARTS:

- [MacBook Pro 13" Unibody \(Mid 2009 to Mid 2012\) Replacement Battery](#) (1)

## Step 1 — Lower Case



- Remove the following 10 screws securing the lower case to the MacBook Pro 13" Unibody:
  - Seven 3 mm Phillips screws.
  - Three 13.5 mm Phillips screws.

## Step 2



- Slightly lift the lower case and push it toward the rear of the computer to free the mounting tabs.

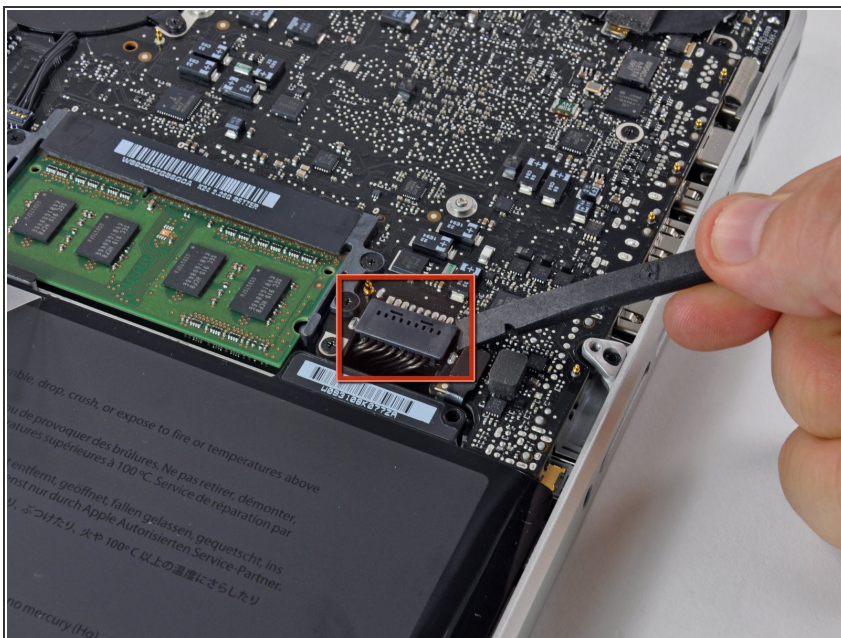


## Step 3 — Battery



- Remove the following tri-point screws securing the battery to the upper case:
  - One 5.5 mm tri-point screw.
  - One 13.5 mm tri-point screw.

## Step 4



- Use the flat end of a spudger to lift the battery connector up out of its socket on the logic board.

- Lift the battery out of the upper case.
- 🚩 If you're installing a new battery, you should [calibrate](#) it after installation:
  - Charge it to 100%, and then keep charging it for at least 2 more hours. Next, unplug and use it normally to drain the battery. When you see the low battery warning, save your work, and keep your laptop on until it goes to sleep due to low battery. Wait at least 5 hours, then charge your laptop uninterrupted to 100%.
  - If you notice any unusual behavior or problems after installing your new battery, you may need to [reset your MacBook's SMC](#).

This document was generated on 2019-09-18 02:03:11 AM (MST).