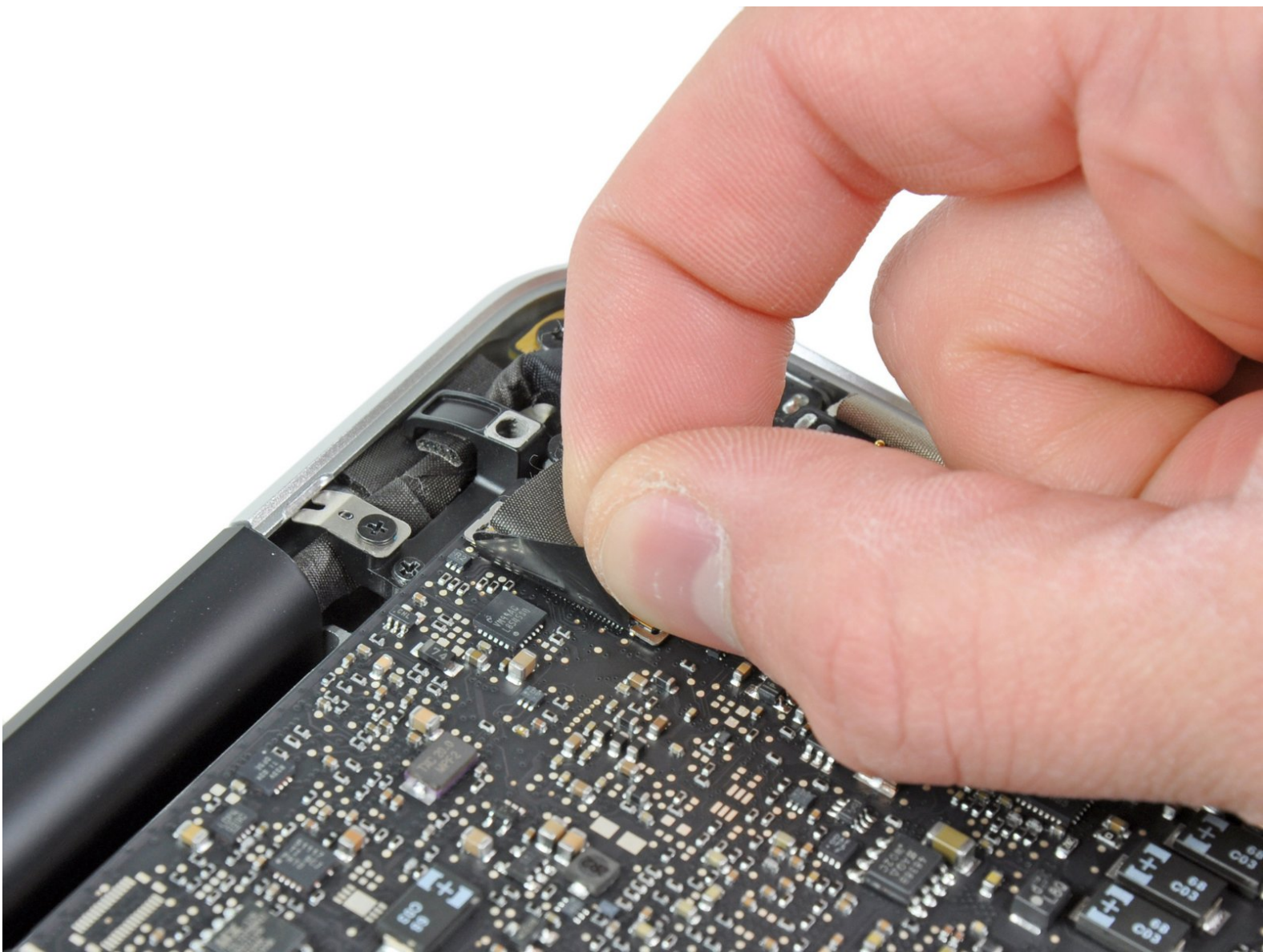




# MacBook Pro 13" Unibody Mid 2010 Logic Board Replacement

Written By: Walter Galan

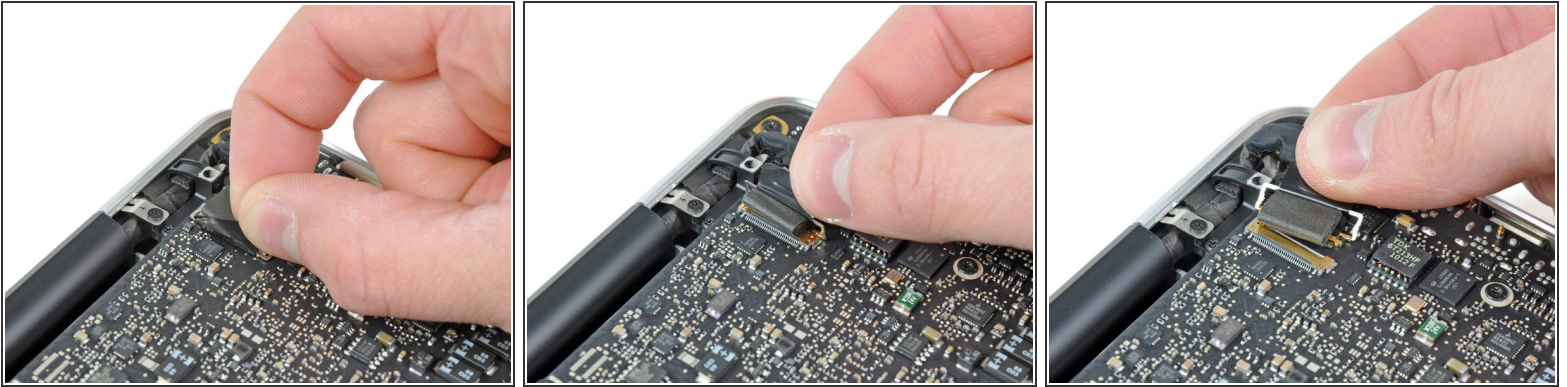





## TOOLS:

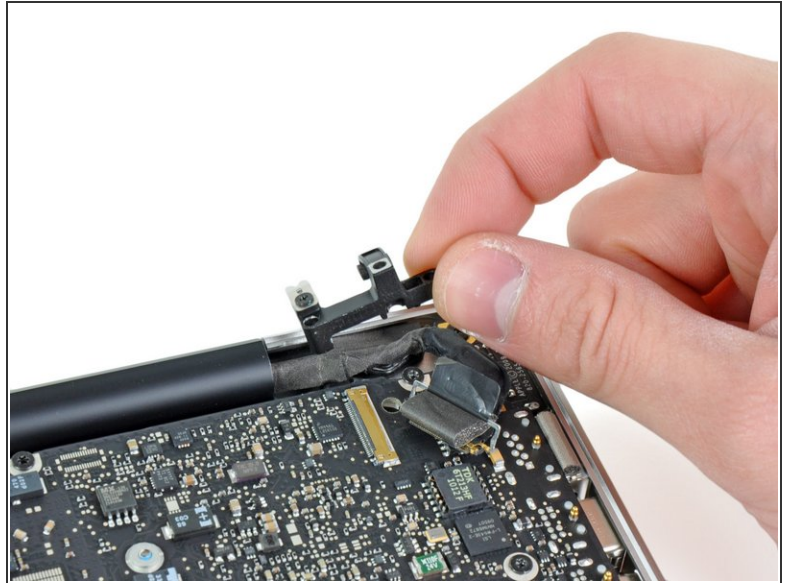
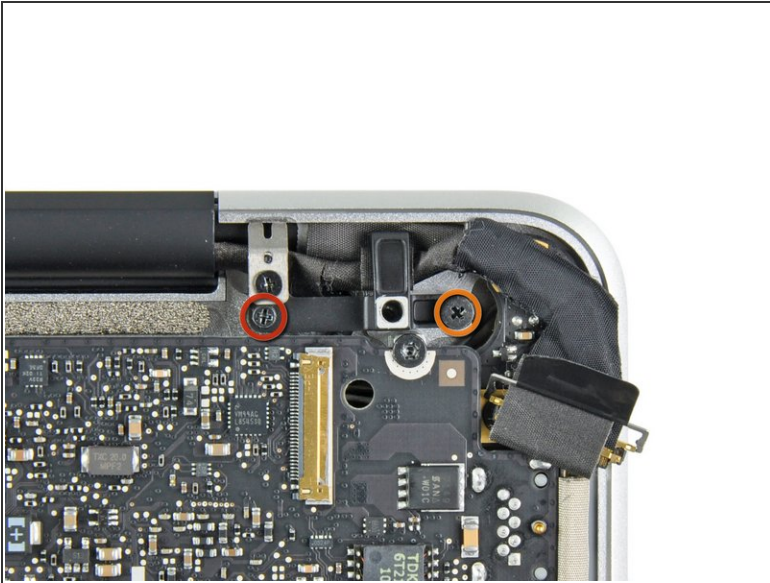
- [Phillips #00 Screwdriver](#) (1)
  - [Spudger](#) (1)
  - [T6 Torx Screwdriver](#) (1)
  - [Tri-point Y0 Screwdriver](#) (1)
-

## Step 1 — Logic Board



- Grab the plastic pull tab secured to the display data cable lock and rotate it toward the DC-In side of the computer.
- Gently pull the display data cable connector away parallel to the board.  
 Do not pull the connector upwards, or you may damage the connector.

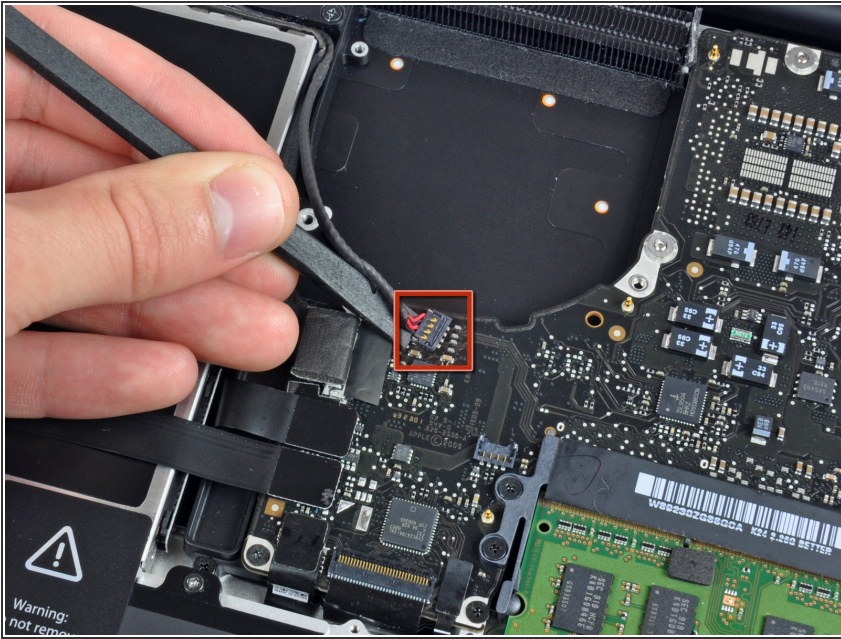
## Step 2



- Remove the following two screws securing the display data cable bracket to the upper case:
  - One 8.6 mm Phillips
  - One 5.6 mm Phillips
- Lift the display data cable bracket out of the upper case.

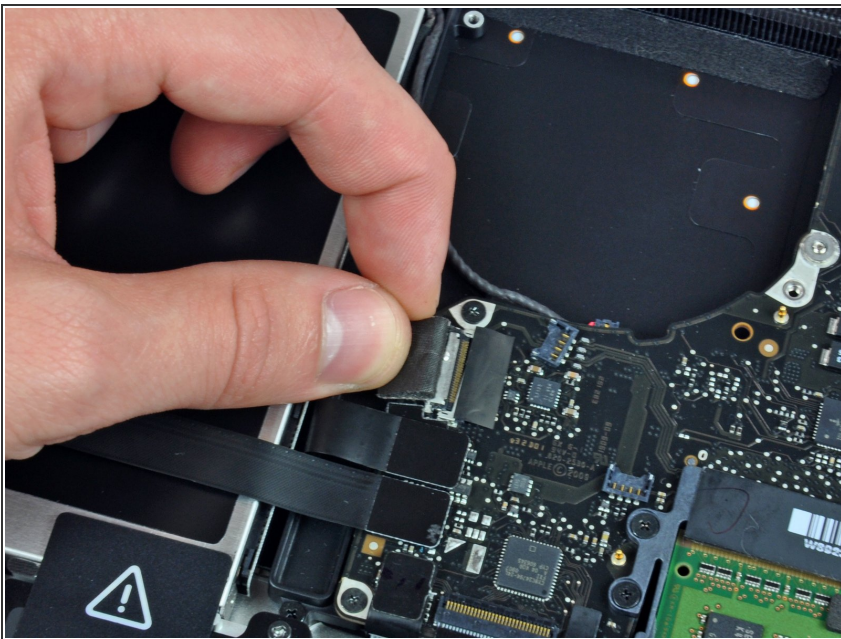


### Step 3



- Use the flat end of a spudger to pry the subwoofer and right speaker connector up off the logic board.

### Step 4



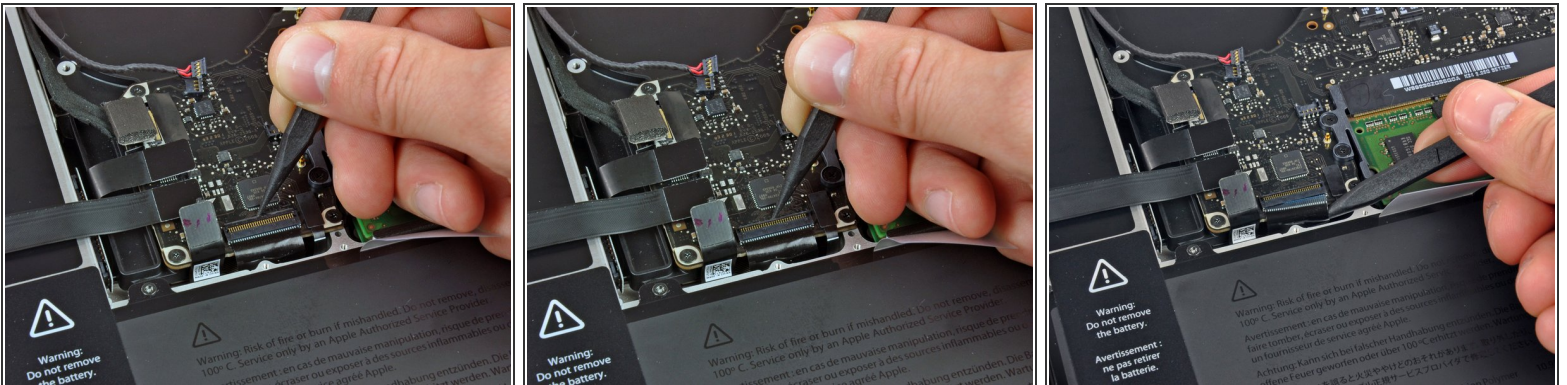
- Pull the camera cable connector toward the optical drive to disconnect it from the logic board.
- ⓘ This socket is metal and easily bent. Be sure to align the connector with its socket on the logic board before mating the two pieces.

## Step 5



- Use the flat end of a spudger to pry the optical drive, hard drive, and trackpad cable connectors up off the logic board.

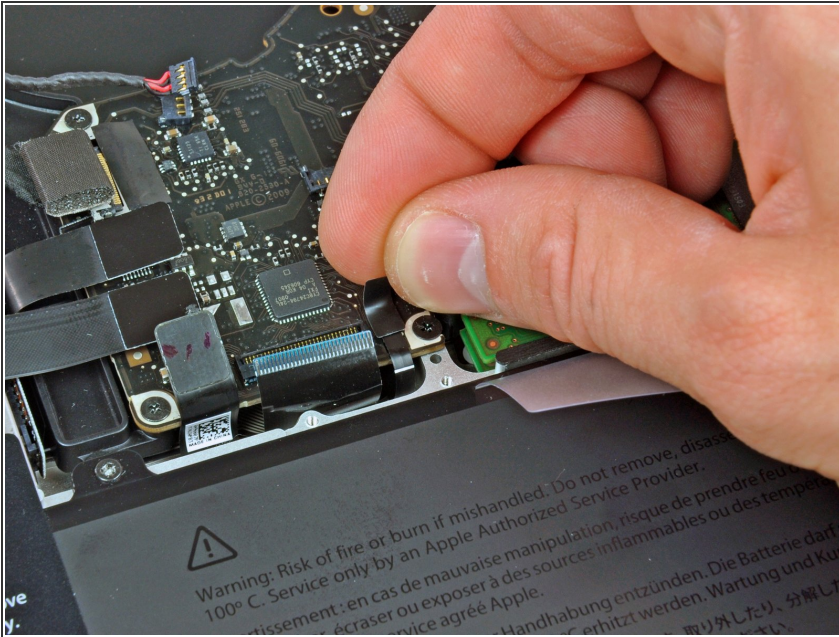
## Step 6



- Use your fingernail or the tip of a spudger to flip up the cable retaining flap on the ZIF socket for the keyboard ribbon cable.
- Use your spudger to slide the keyboard ribbon cable out of its socket.

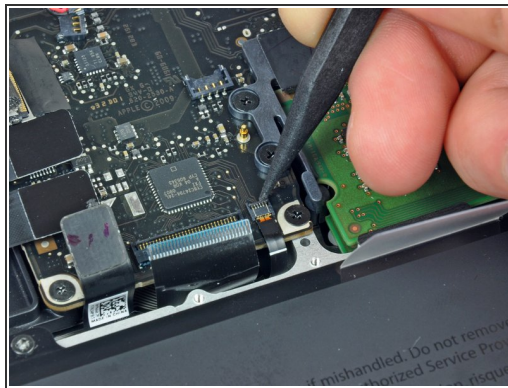
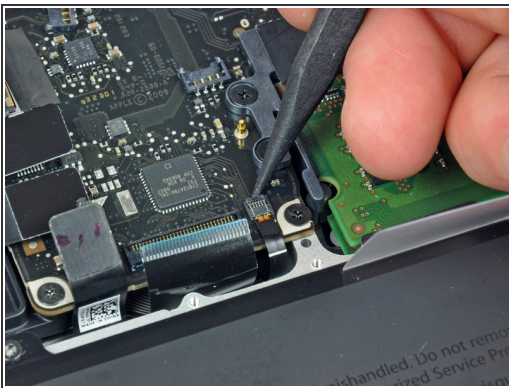


## Step 7



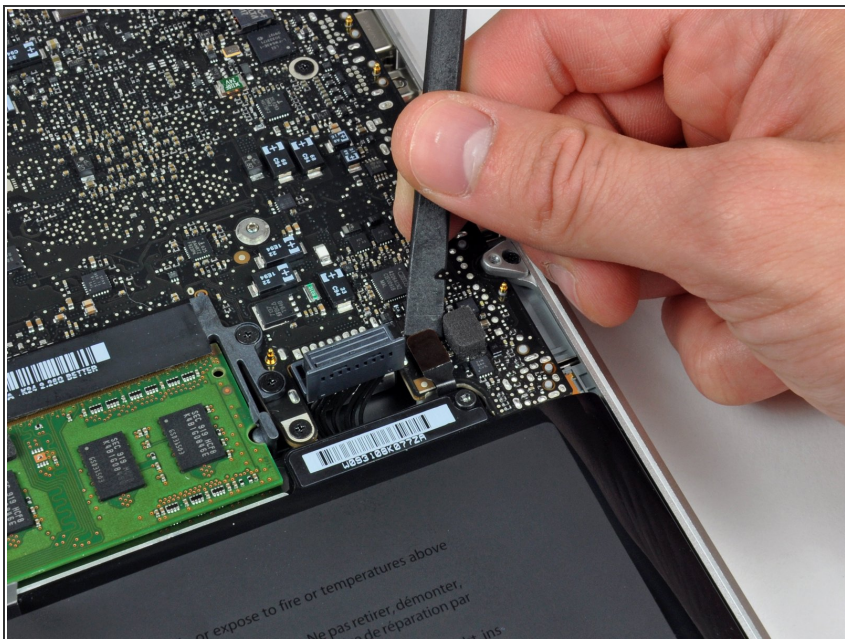
- Peel the small strip of black tape off the keyboard backlight ribbon cable socket.

## Step 8



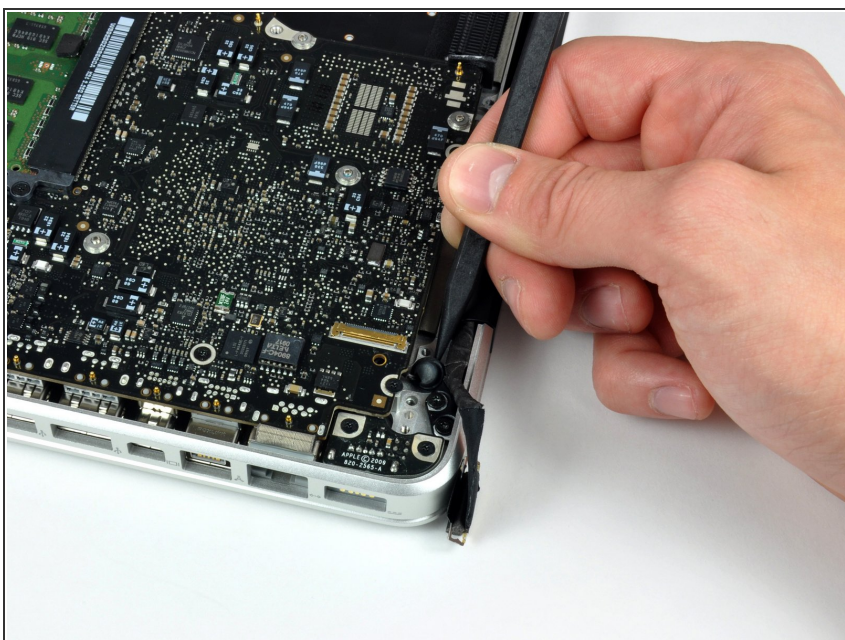
- Use the tip of a spudger to flip up the cable retaining flap on the ZIF socket for the keyboard backlight ribbon cable.
- Use your spudger to slide the keyboard backlight ribbon cable out of its socket.

## Step 9



- Use the flat end of a spudger to pry the battery indicator cable connector up off the logic board.

## Step 10



- Use the tip of a spudger to pry the microphone off the adhesive attaching it to the upper case.



## Step 11



- Remove the following screws:
  - Two 7 mm T6 Torx screws from the DC-In board
  - Five 3.3 mm T6 Torx screws
  - Two 4 mm T6 Torx screws

## Step 12

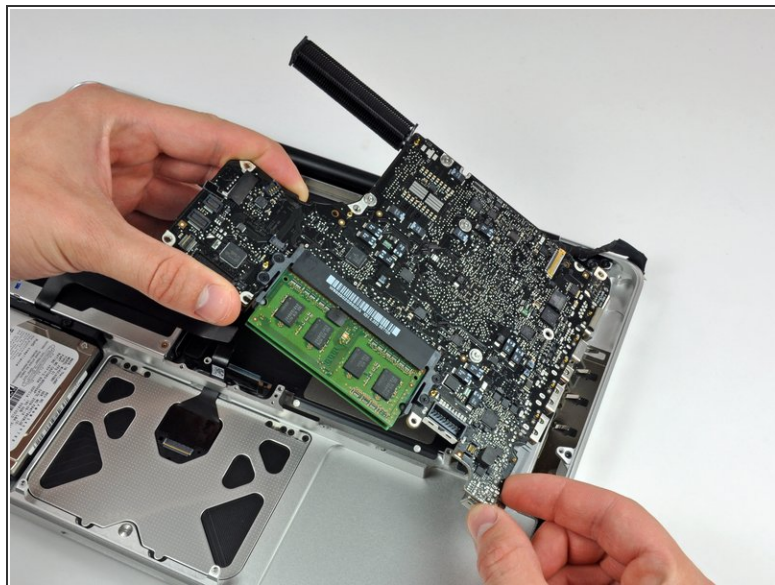
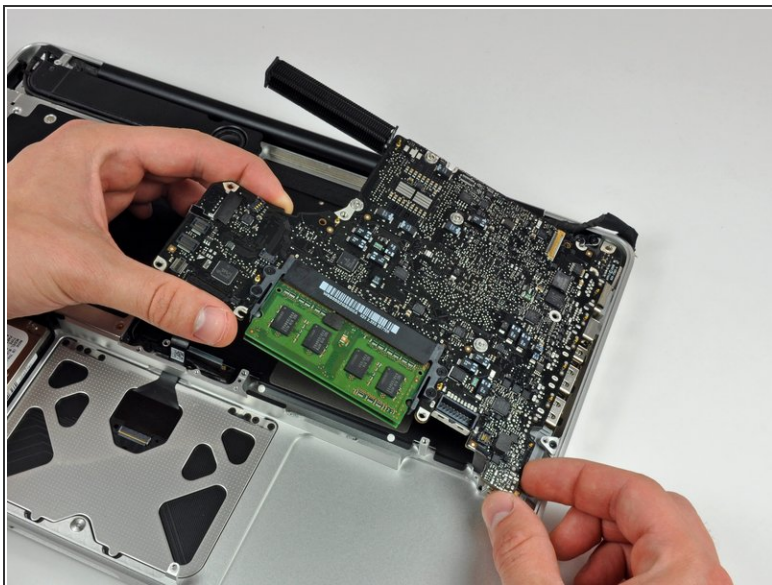


**i** Removing the battery before lifting out the logic board is not strictly required, but makes removing the logic board easier and safer. If you leave your battery in, be especially careful not to bend the logic board against the battery's case near its bar code.

- Remove the following Tri-point screws securing the battery to the upper case:
  - One 5.5 mm Tri-point screw
  - One 13.5 mm Tri-point screw
- Lift the battery out of the upper case.



## Step 13



- Lift the logic board from its left edge and raise it until the ports clear the side of the upper case.
- Pull the logic board away from the side of the upper case and remove it, minding the DC-In board that may get caught.

To reassemble your device, follow these instructions in reverse order.