



MacBook Pro 13" Unibody Mid 2012 Optical Drive Replacement

Replace a broken optical drive in your Mid 2012 MacBook Pro 13" Unibody.

Written By: Andrew Optimus Goldheart





TOOLS:

- [Phillips #00 Screwdriver](#) (1)
- [Spudger](#) (1)



PARTS:

- [MacBook Pro 13" Unibody \(Model A1278\) 8x SATA SuperDrive \(Used\)](#) (1)
- [MacBook Pro 13" Unibody \(Model A1278 Early 2011 Late 2011 Mid 2012\) SATA SuperDrive Cable](#) (1)

Step 1 — Lower Case



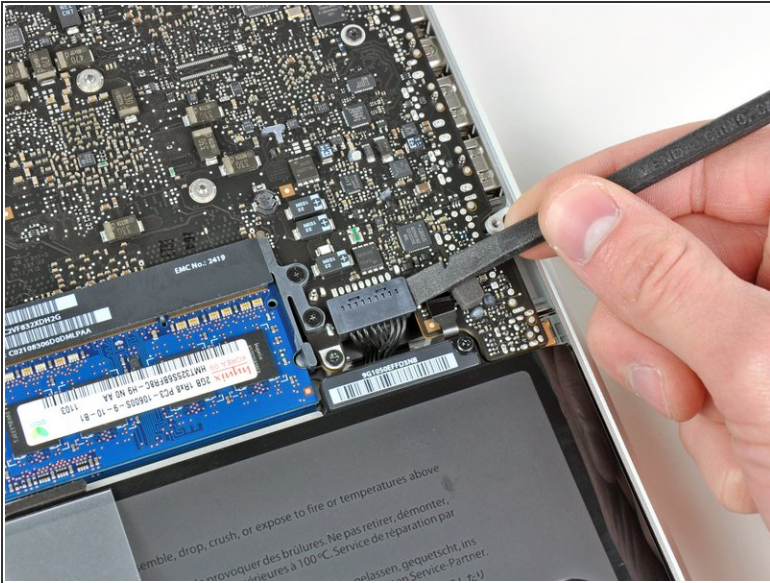
- Remove the following ten screws:
 - Three 14.4 mm Phillips #00 screws
 - Three 3.5 mm Phillips #00 screws
 - Four 3.5 mm shouldered Phillips #00 screws
- ⓘ When replacing the small screws, align them perpendicular to the slight curvature of the case (they don't go straight down).

Step 2



- Use your fingers to pry the lower case away from the body of the MacBook near the vent.
- Remove the lower case.

Step 3 — Battery Connection



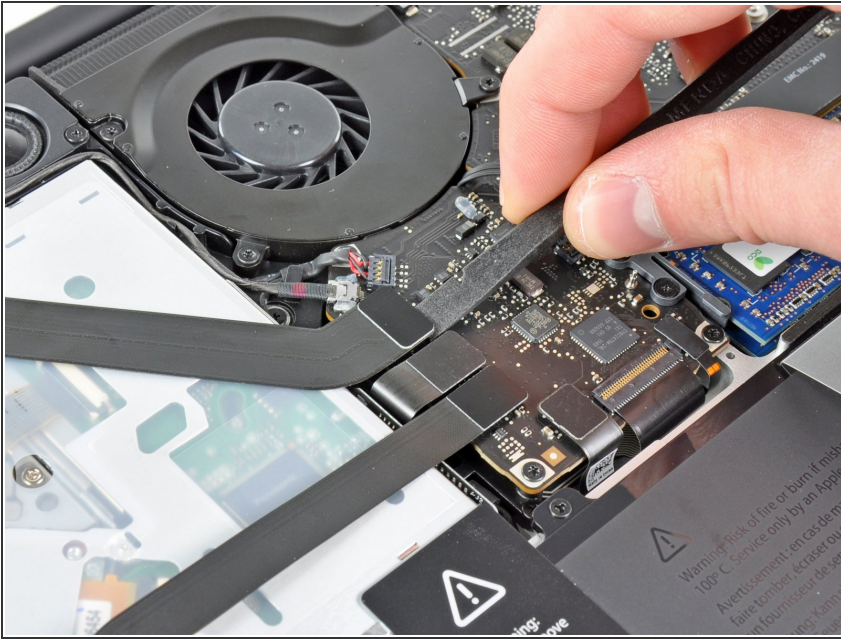
- Use the edge of a spudger to pry the battery connector upwards from its socket on the logic board.
- ❗ It is useful to pry upward on both short sides of the connector to "walk" it out of its socket. Be careful with the corners of the connectors, they can be easily broken off.

Step 4



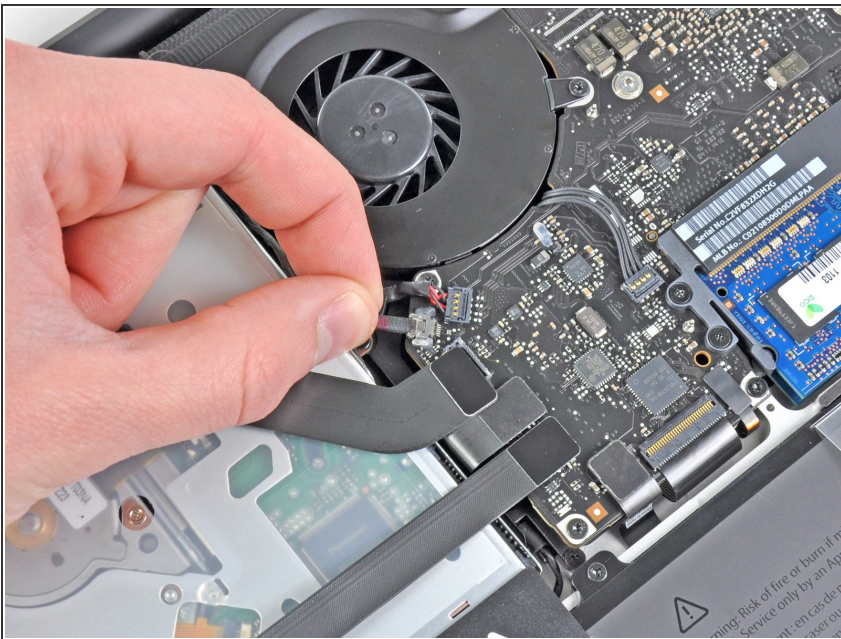
- Bend the battery cable slightly away from its socket on the logic board so it does not accidentally connect itself while you work.

Step 5 — Optical Drive



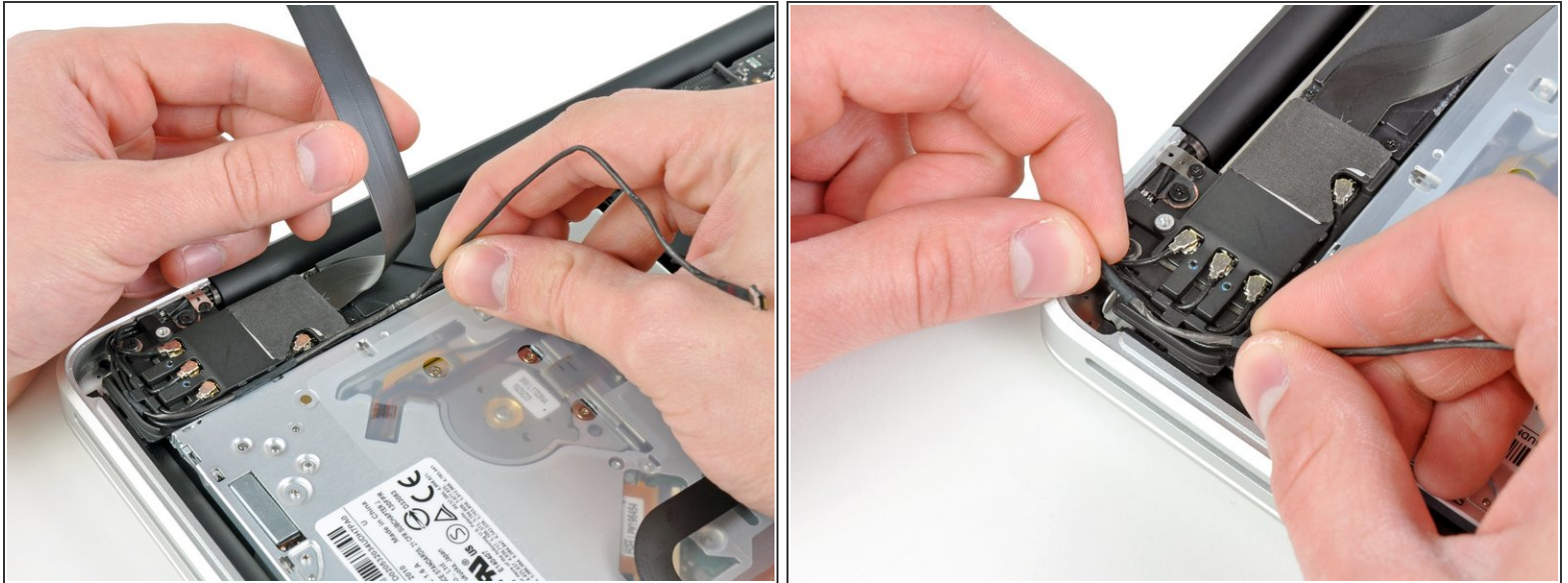
- Use the flat end of a spudger to pry the AirPort/Bluetooth ribbon cable connector up from its socket on the logic board.

Step 6



- Carefully pull the camera cable out of its socket on the logic board.
- ⓘ Though not recommended by iFixit staff, some users opt to omit this step completely. For information on this, see the step comments.
- ⚠ Pull the cable parallel to the face of the logic board. Pulling it upward may damage the logic board or the cable itself.

Step 7



- Carefully move the AirPort/Bluetooth ribbon cable out of the way as you peel the camera cable off the adhesive securing it to the subwoofer and the AirPort/Bluetooth bracket.
- De-route the camera cable out from under the retaining finger molded into the AirPort/Bluetooth bracket.

Step 8



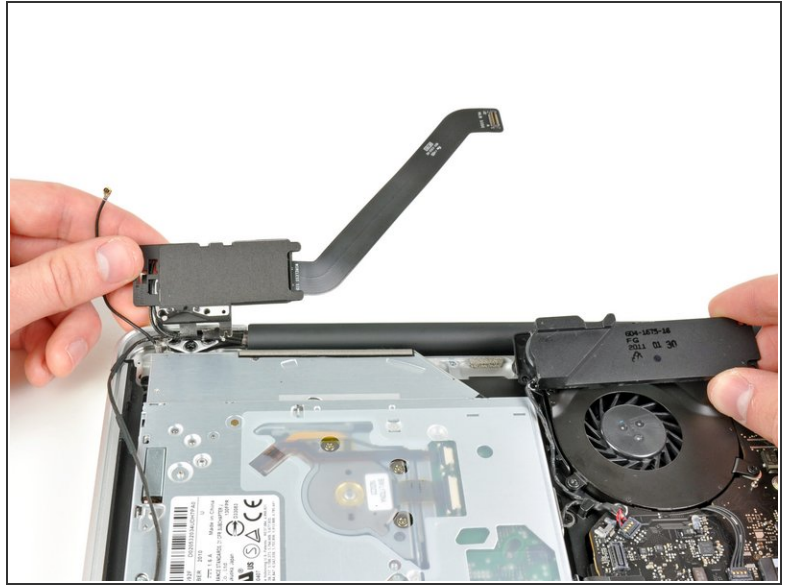
- Use the tip of a spudger to pry the antenna connector closest to the logic board up from its socket on the AirPort/Bluetooth board.
- De-route the antenna cable from under the finger molded into the AirPort/Bluetooth bracket.

Step 9



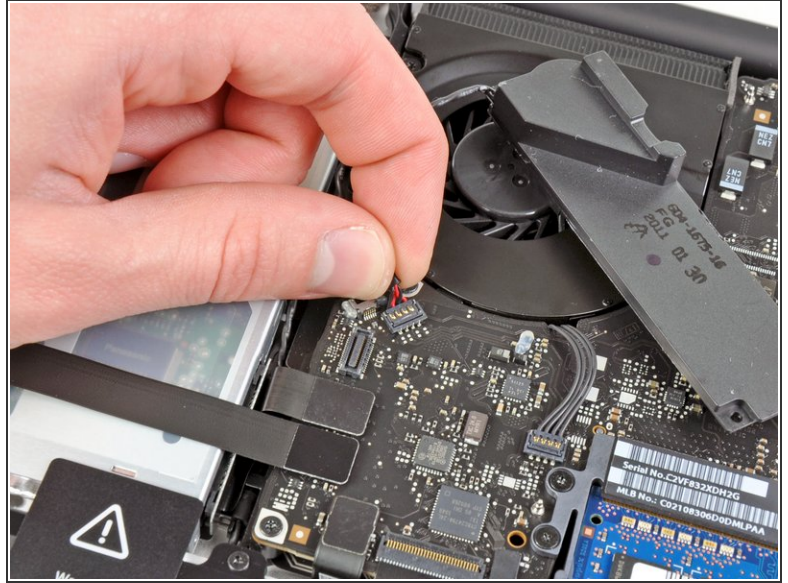
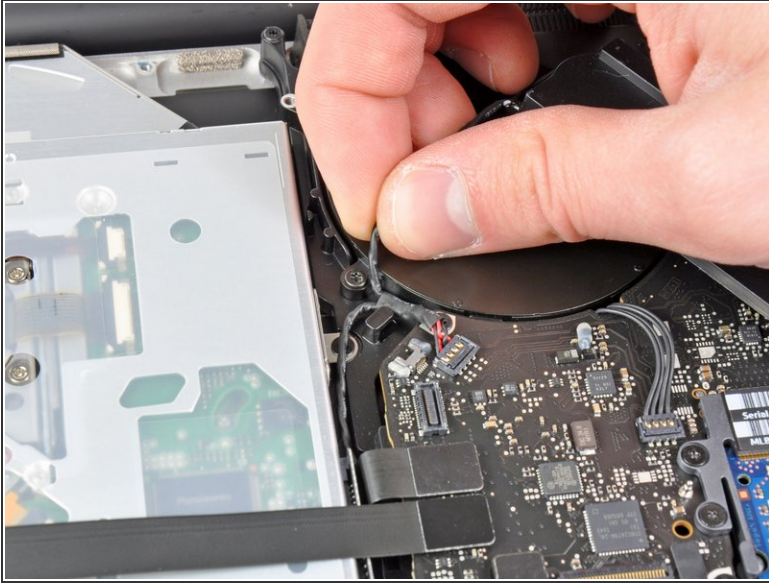
- Remove the following five screws:
 - Two 10.3 mm Phillips screws
 - Two 3.1 mm Phillips screws
 - One 5 mm Phillips screw

Step 10



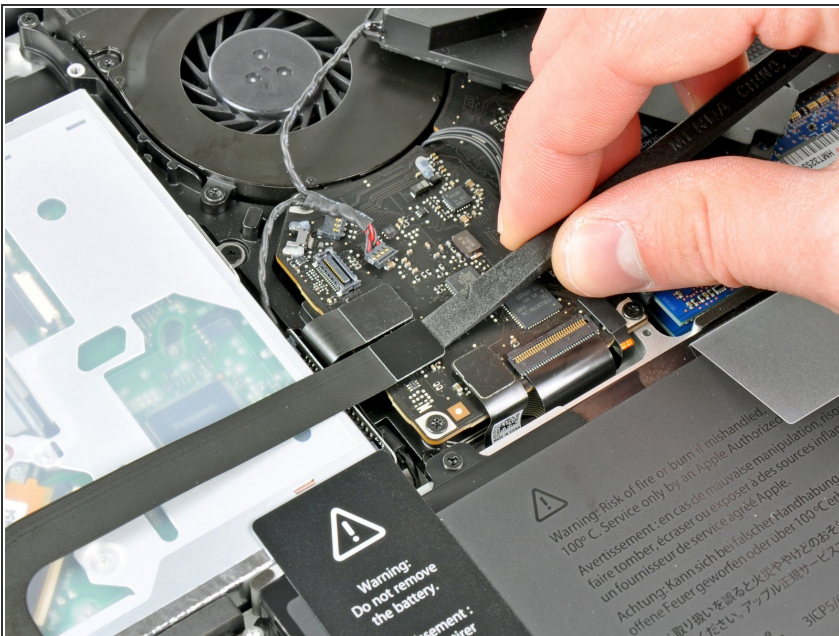
- Pull the AirPort/Bluetooth assembly and the Subwoofer upward near the center of the side of the optical drive until they clear each other.
- Move the AirPort/Bluetooth assembly and the subwoofer away from the top of the optical drive.

Step 11



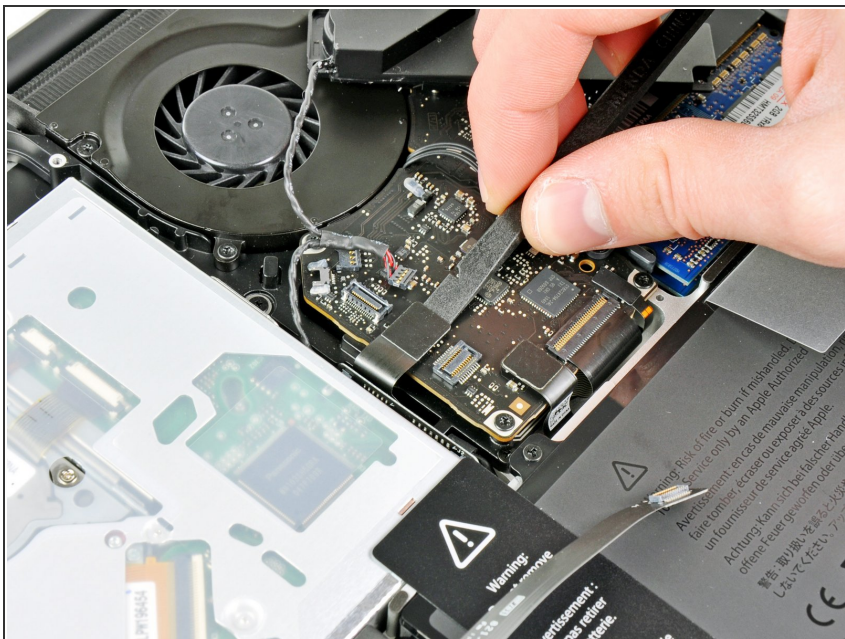
- Pull the right speaker/subwoofer cable out from under the retaining finger near the side of the optical drive.
- Pull the right speaker/subwoofer cable upward to disconnect it from the logic board.

Step 12



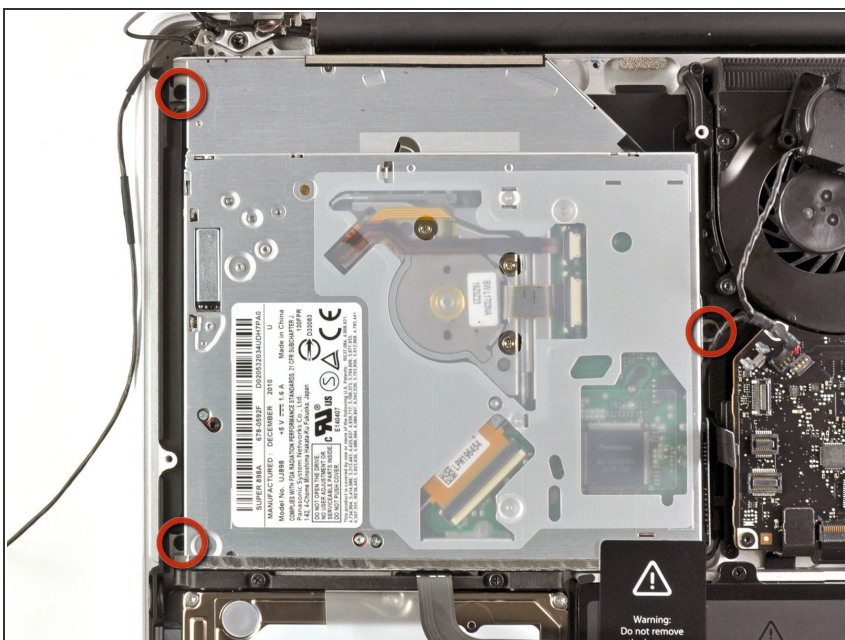
- Use the flat end of a spudger to pry the hard drive cable connector up from its socket on the logic board.
- Bend the hard drive cable away from the optical drive.

Step 13



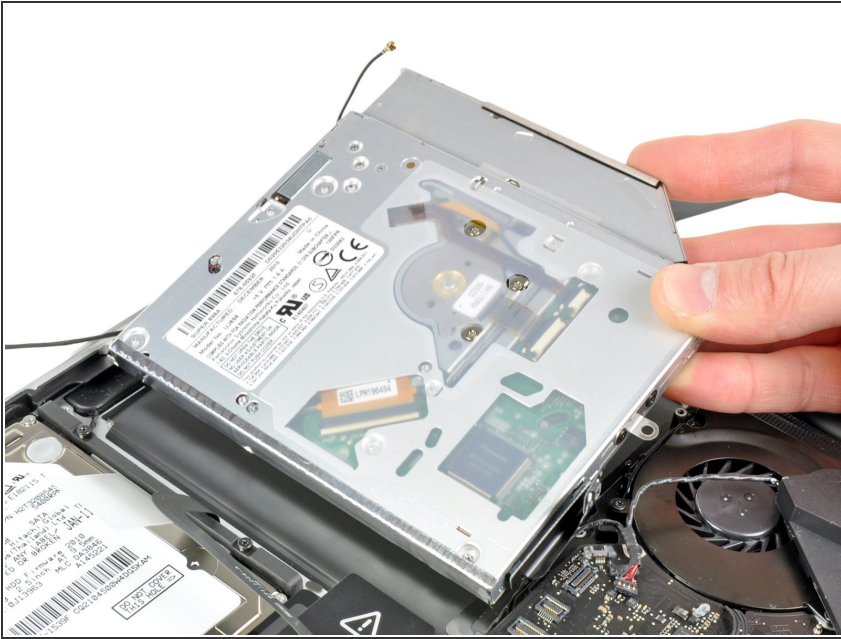
- Use the flat end of a spudger to pry the optical drive connector up from its socket on the logic board.

Step 14



- Remove the three 2.7 mm Phillips screws securing the optical drive to the upper case.

Step 15



- Pull the optical drive upward from its edge closest to the display and remove it from the upper case.

Step 16 — Optical Drive



- Pull the optical drive cable away from the optical drive.

⚠ Be sure to pull on the connector, not the cable itself.

- Remove the two black Phillips #0 screws securing the small metal mounting bracket. Transfer this bracket to your new optical drive or [hard drive enclosure](#).

This document was generated on 2019-09-20 03:31:34 AM (MST).

To reassemble your device, follow these instructions in reverse order.