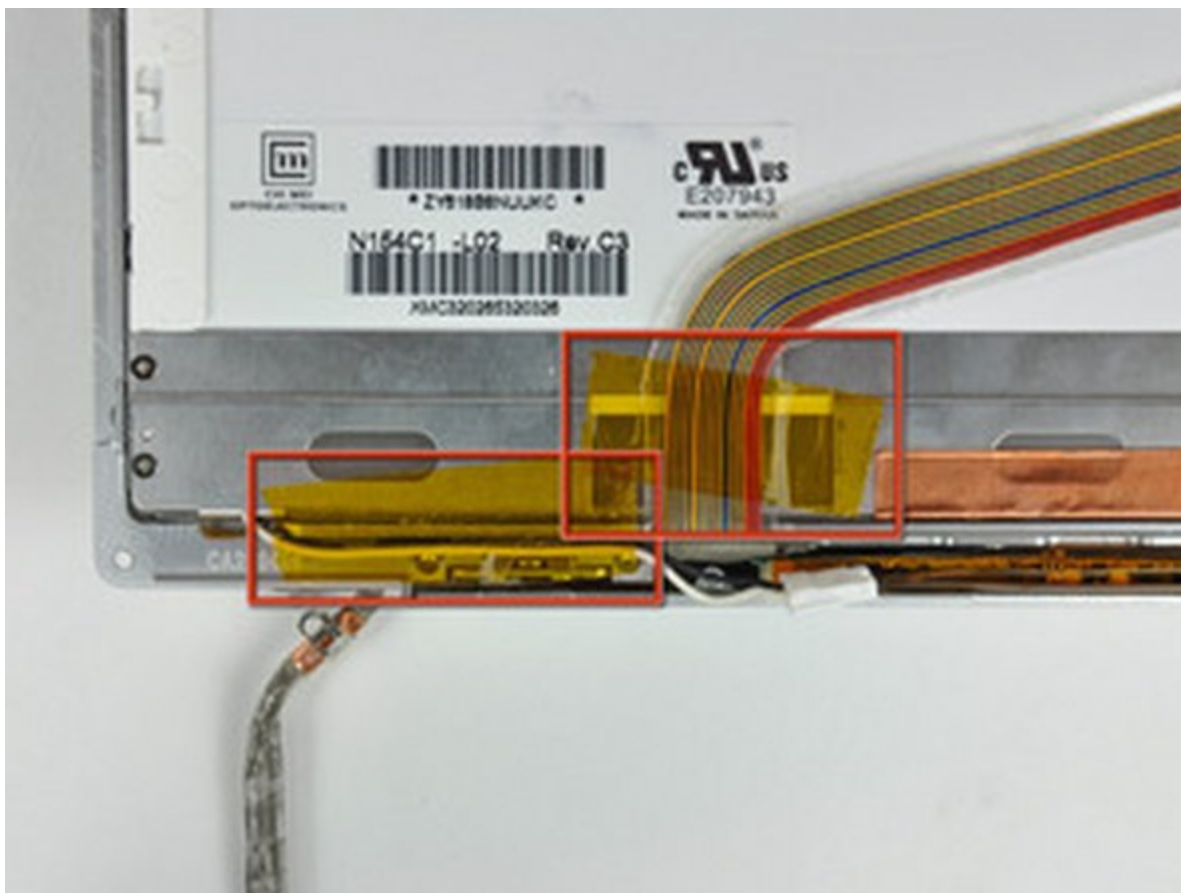




MacBook Pro 15" Core 2 Duo Model A1211 LCD Panel Replacement

Written By: Luke Soules



INTRODUCTION

Replacing just your LCD panel can save you money.



TOOLS:

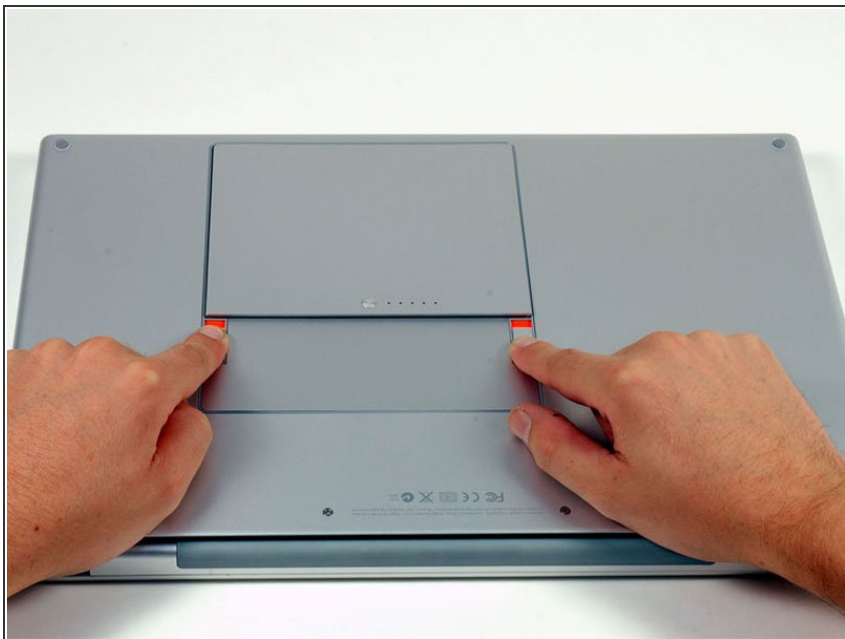
- [Phillips #00 Screwdriver](#) (1)
- [Spudger](#) (1)
- [T6 Torx Screwdriver](#) (1)



PARTS:

- [MacBook Pro 15" \(Models A1150/A1211\) LCD Panel](#) (1)
- [MacBook Pro 15" Display Screw Set](#) (1)

Step 1 — Battery



- Use your fingers to push both battery release tabs away from the battery, and lift the battery out of the computer.

Step 2 — RAM Shield



- Remove the three identical Phillips screws from the memory door.

Step 3



- Lift the memory door up enough to get a grip on it, and slide it toward you, pulling it away from the casing.

Step 4 — Upper Case



- Remove the two 2.8 mm Phillips screws in the battery compartment near the latch.

Step 5



- Remove the following 6 screws:
 - Two 10 mm T6 Torx screws on either side of the RAM slot.
 - Four 14.5 mm Phillips screws along the hinge.

Step 6



- Remove the four 3.2 mm Phillips screws on the port side of the computer.

Step 7



- Rotate the computer 90 degrees and remove the two 3.2 mm Phillips screws from the rear of the computer.

Step 8



- Rotate the computer 90 degrees again and remove the four 3.2 mm Phillips screws from the side of the computer.

Step 9



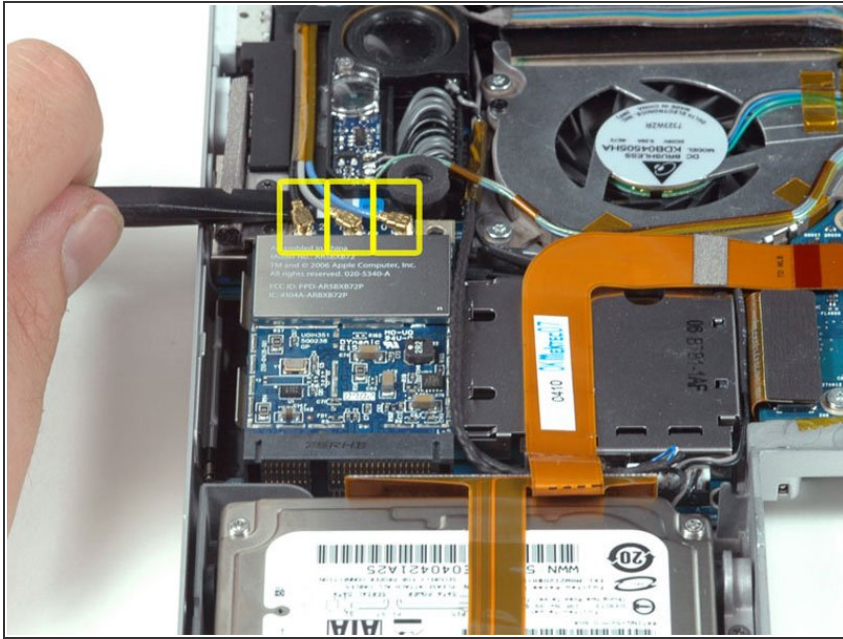
- ❗ Do not yank the upper case off quickly. The case is attached to the logic board via a ribbon cable.
- Lift up at the rear of the case and work your fingers along the sides, freeing the case as you go. Once you have freed the sides, you may need to rock the case up and down to free the front of the upper case (there are some hidden plastic clips that need to be clicked off).

Step 10



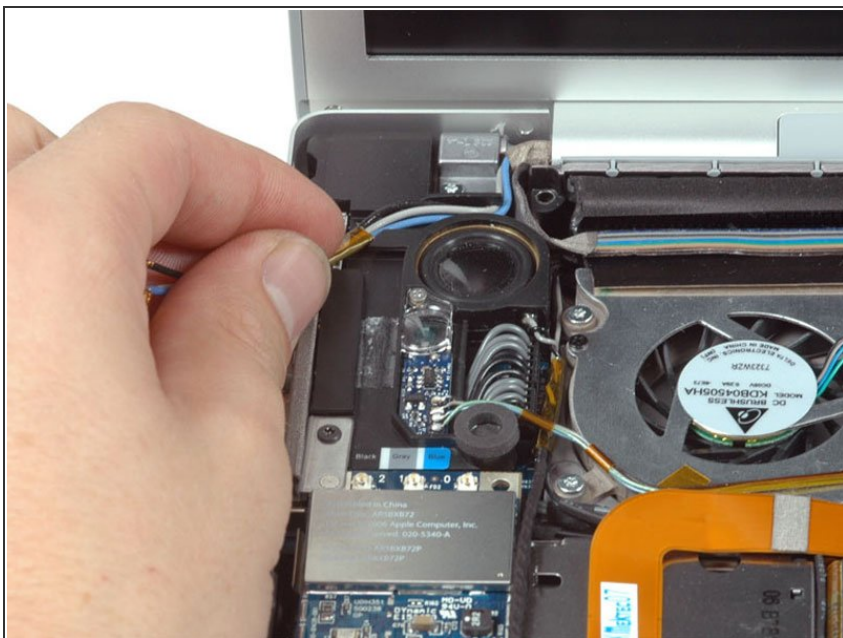
- Disconnect the trackpad and keyboard ribbon cable from the logic board, removing tape as necessary.
- Remove the upper case.

Step 11 — Display Assembly



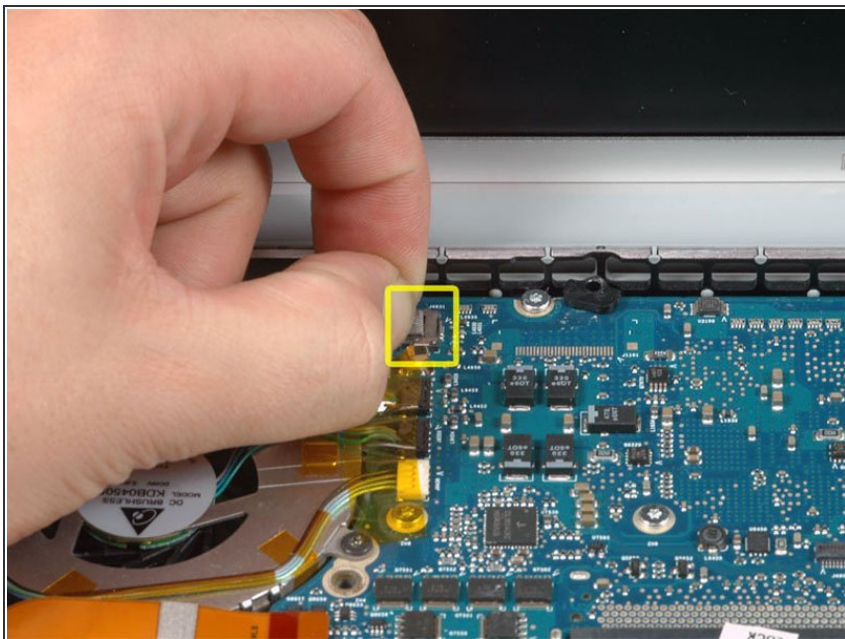
- Disconnect the three antenna cables attached to the Airport Extreme card.
- ★ Apple was kind enough to include a label showing where each color antenna cable plugs in - just make sure to look at this when reconnecting the antenna cables.

Step 12



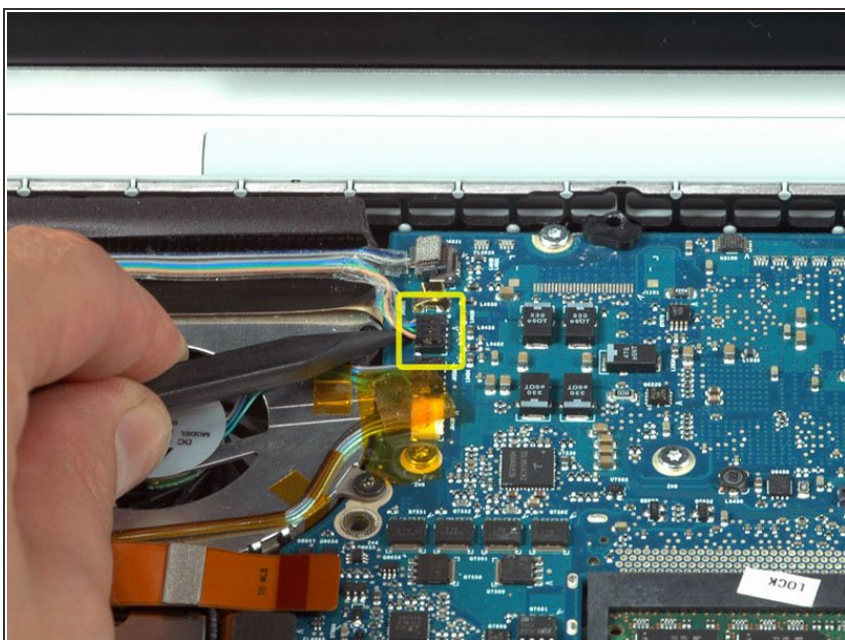
- Deroute the Airport antenna cables from their channel in the left speaker.

Step 13



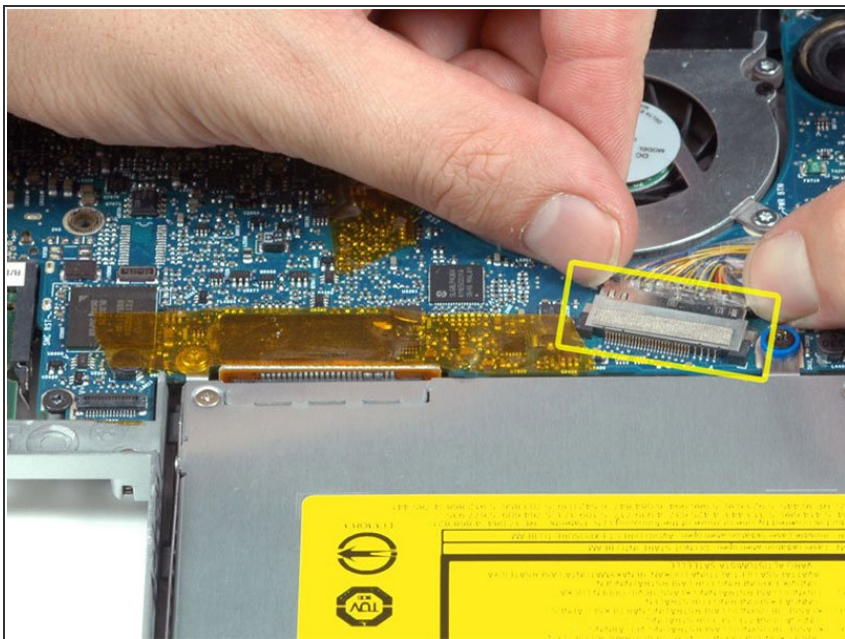
- Disconnect the iSight cable from the logic board by sliding the cable to the left and out of its connector.

Step 14



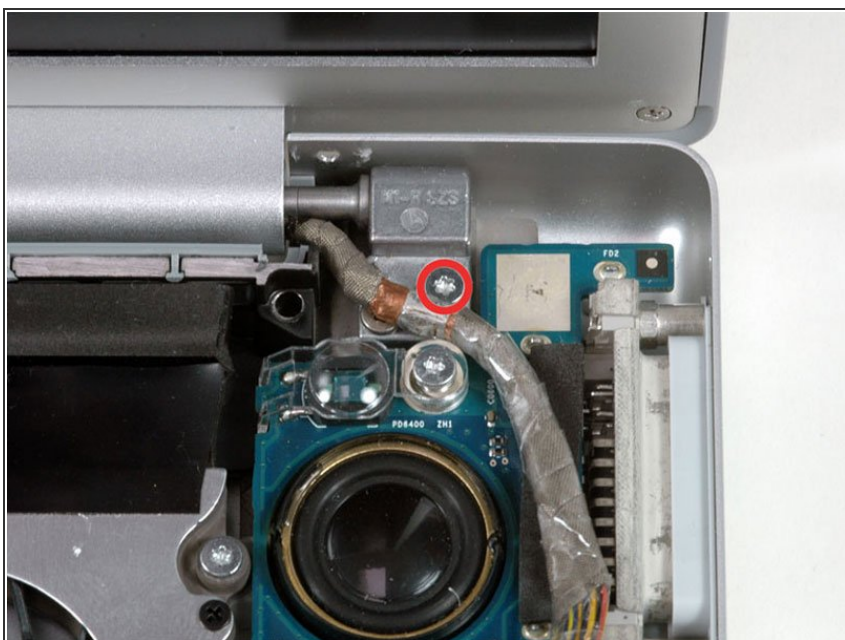
- Disconnect the inverter cable from the logic board by placing a spudger beneath the cable and lifting up.

Step 15



- Disconnect the display data cable from the logic board by pulling sideways.

Step 16



- Remove the silver T6 Torx securing the ground loop in the display data cable to the casing.

Step 17



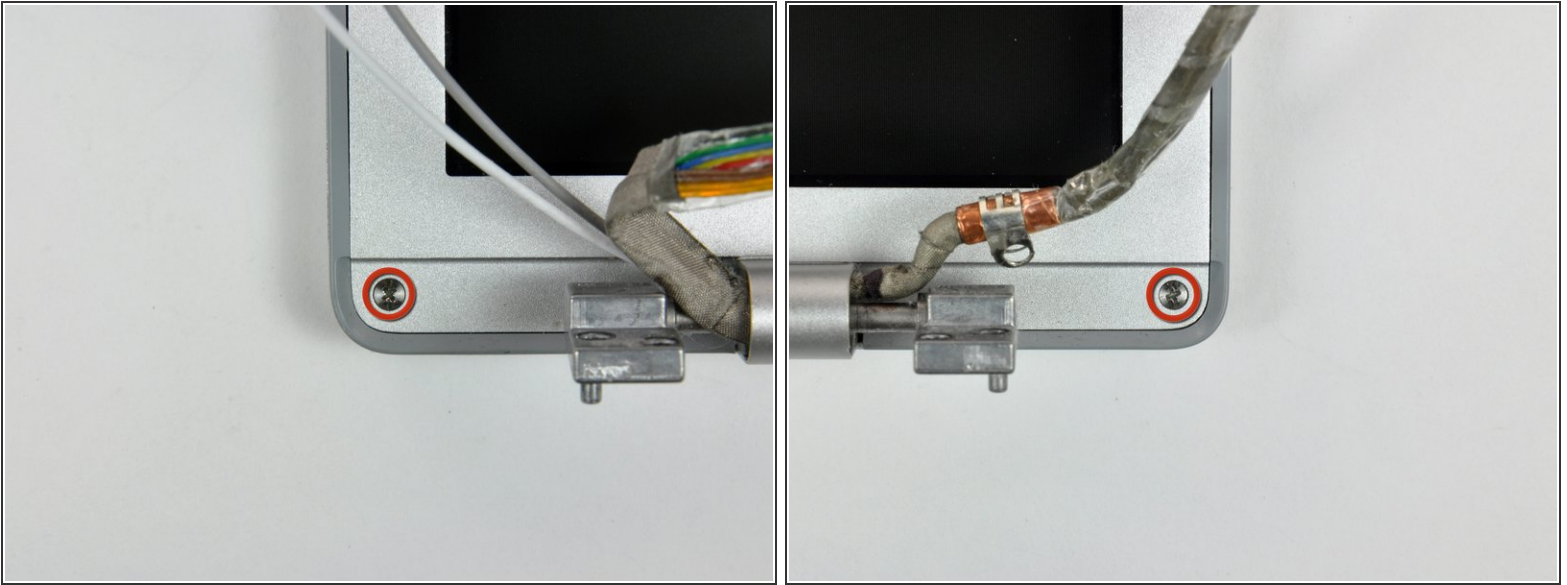
- Support the display with one hand while removing the following 3 screws:
 - Two 9.5 mm silver T6 Torx screws with threads on only part of the shaft on the inside of the display hinges.
 - One 9.5 mm silver T6 Torx screw with threads on the entire shaft on the outside of the left hinge.

Step 18



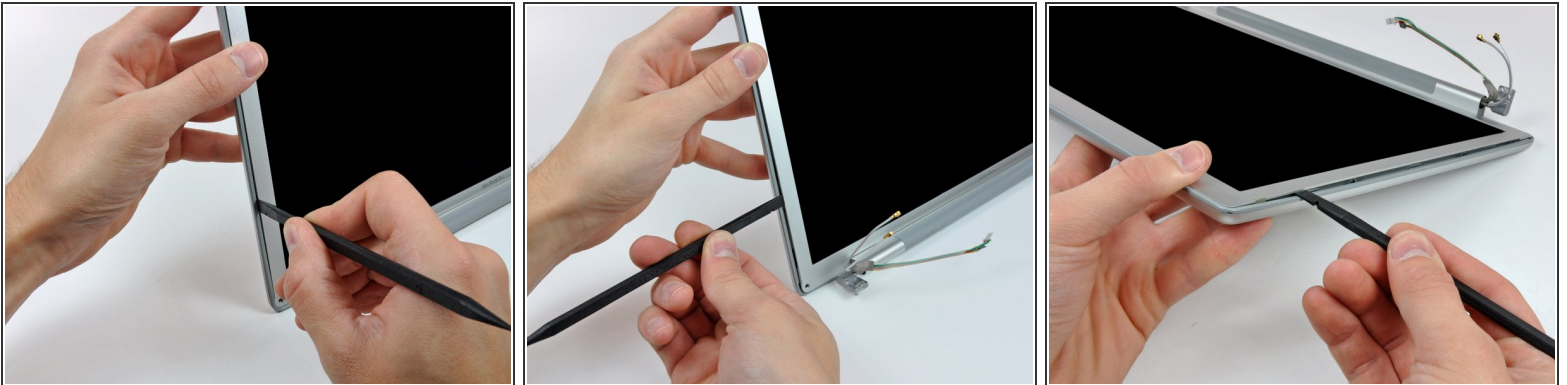
- Grasp the display assembly on both sides and lift it up and out of the computer.

Step 19 — Rear Display Bezel



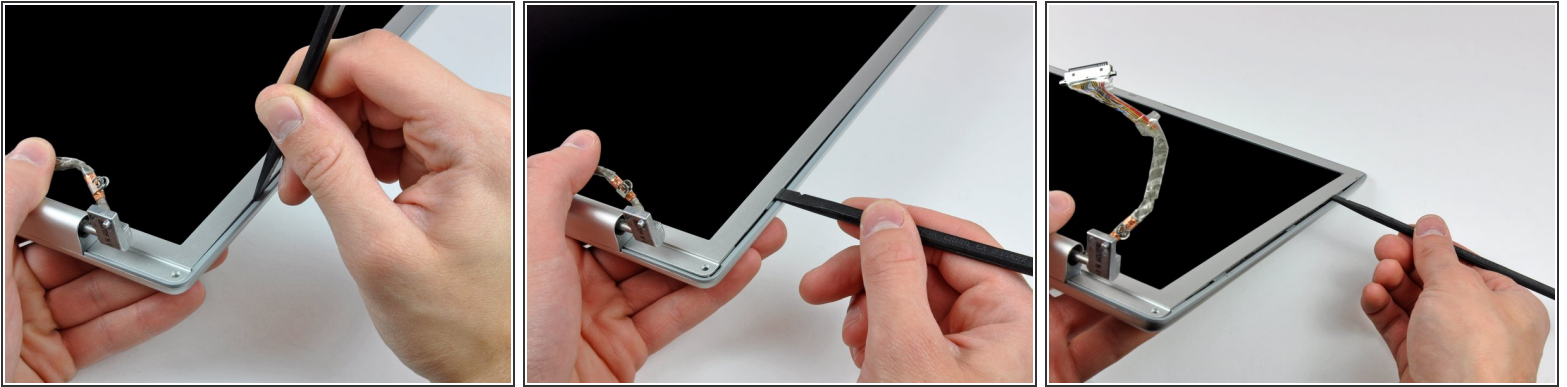
- Remove the two 5 mm Phillips screws from the lower left and right corners of the display (two screws total).

Step 20



- Insert the flat end of a spudger perpendicular to the face of the display between the plastic strip attached to the rear bezel and the front bezel.
- ⚠ Do not insert your spudger between the plastic strip and the rear bezel.
- With the spudger still inserted, rotate it away from the display to separate the front and rear bezels.
- Work along the left edge of the display until the rear bezel is evenly separated from the front bezel.

Step 21



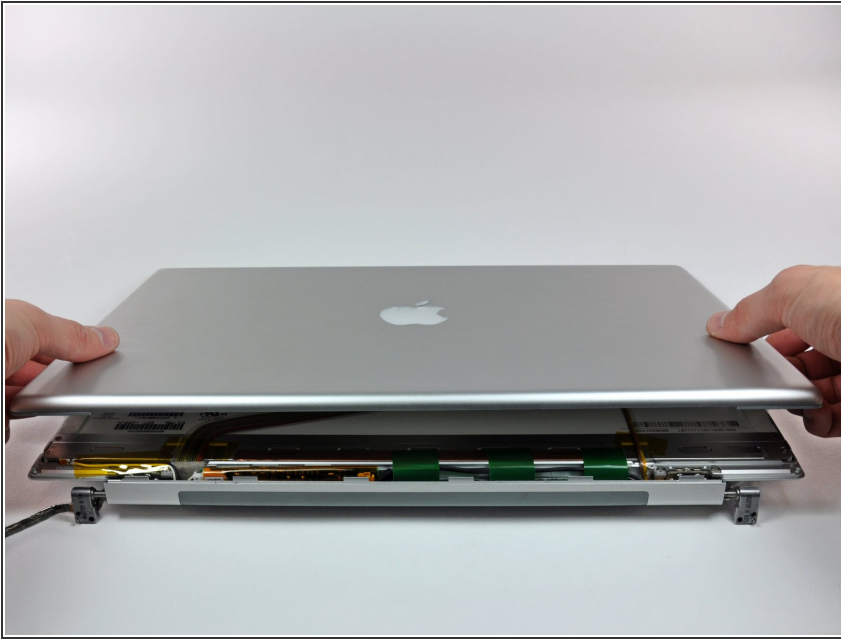
- Insert the flat end of a spudger perpendicular to the face of the display between the plastic strip attached to the rear bezel and the front bezel.
- With the spudger still inserted, rotate it away from the display to separate the front and rear bezels.
- Work along the right edge of the display until the rear bezel is evenly separated from the front bezel.

Step 22



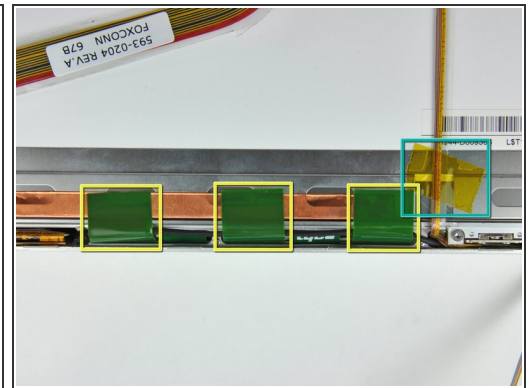
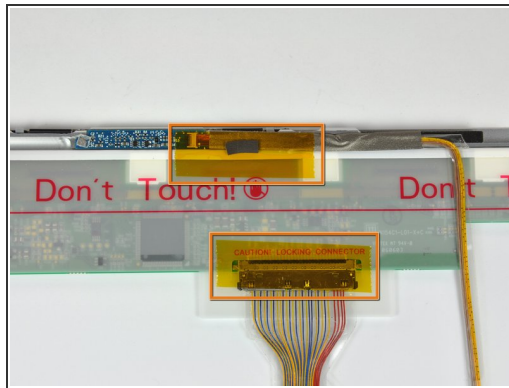
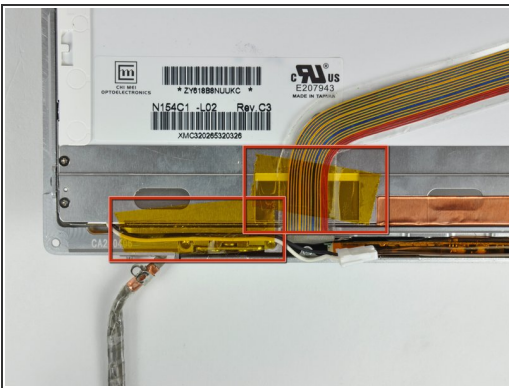
- Insert the flat end of a spudger between the front bezel and the plastic strip attached to the rear bezel near the screw holes at the bottom corners of the display.
- Rotate your spudger toward the rear bezel to separate it from the front bezel.
- If necessary, enlarge the gap between the lower edge of the rear bezel and the clutch cover until the two components are completely separated.

Step 23



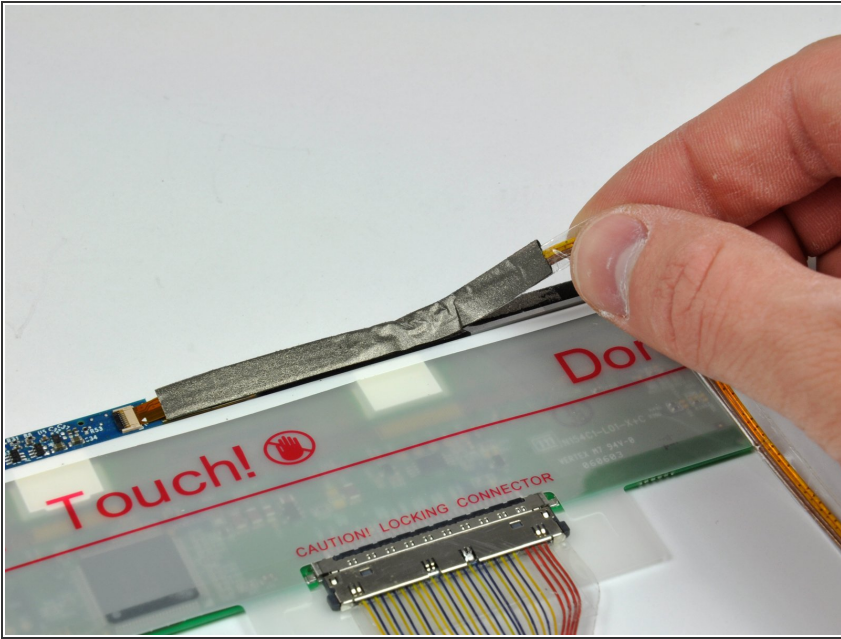
- Lift the rear bezel by its bottom edge and rotate it away from the display assembly to separate the top edge.
- Remove the rear display bezel from the display assembly.

Step 24 — LCD Panel



- Remove the pieces of yellow kapton tape from the bottom left corner of the display.
- Remove the pieces of tape securing the display data cable and camera cable to the display.
- Peel the three green antenna ground straps off the copper tape along the bottom edge of the LCD.
 - ⚠ The adhesive connecting these straps to the display is very strong. An edged tool is helpful to separate the adhesive while you peel the straps off.
- Remove the piece of tape securing the camera cable to the LCD.

Step 25



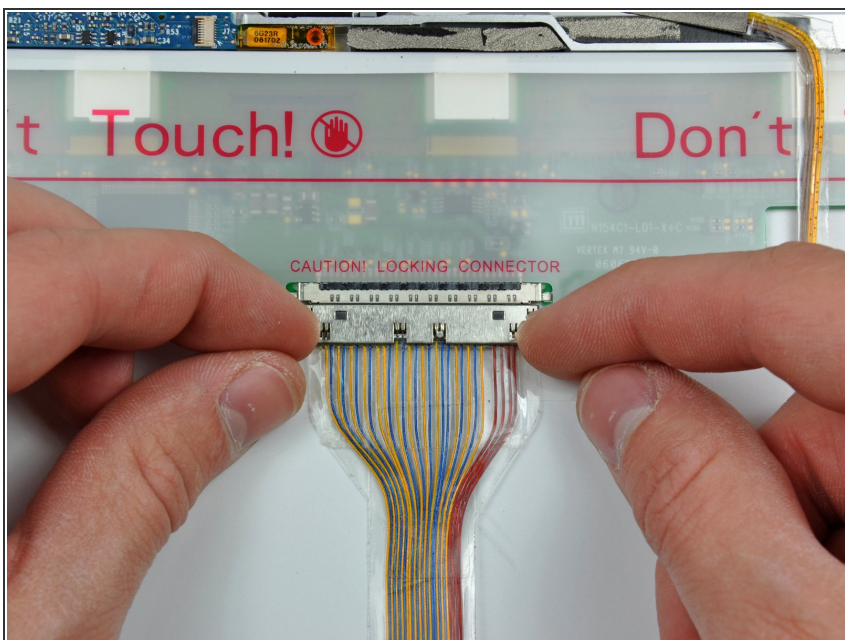
- Carefully peel the camera cable off the foam tape along the top edge of the LCD.

Step 26



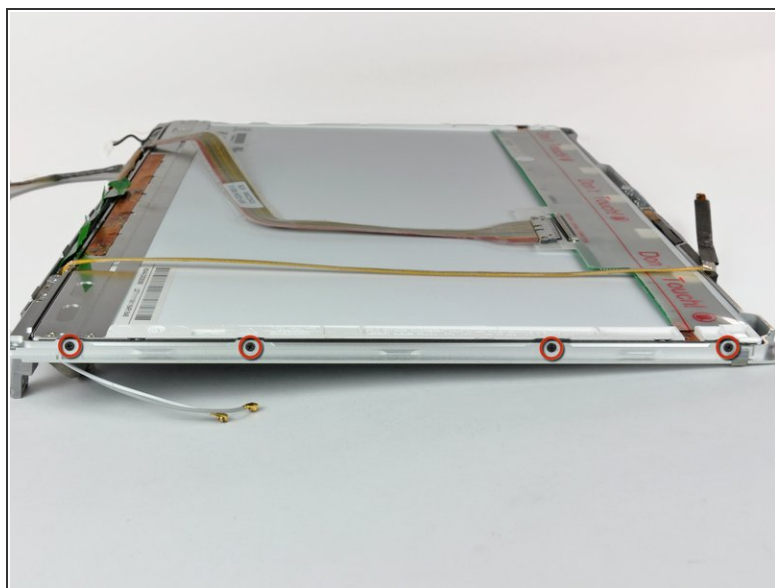
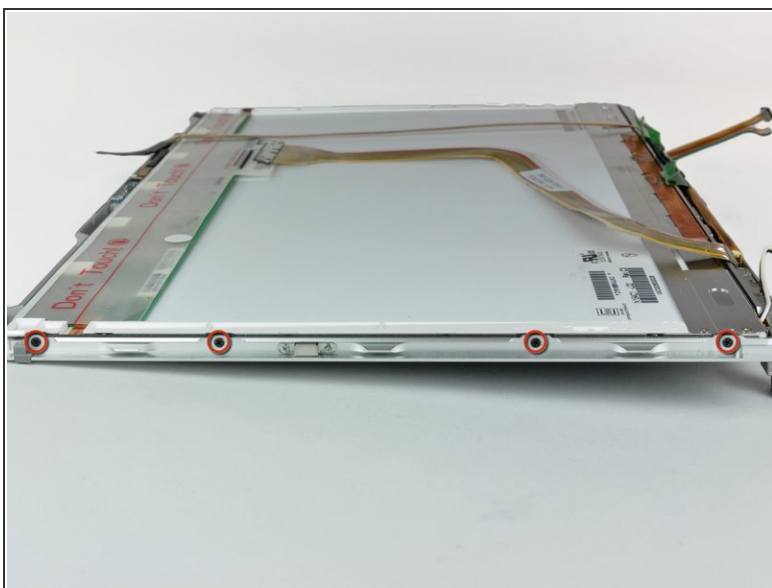
- Use the tip of a spudger and carefully flip the ZIF connector bar up to release the before the camera cable.
- Gently pull the camera cable away from its socket on the camera board.
- ⓘ Pull the cable parallel to the face of the LCD.

Step 27



- Pull the display data cable connector away from its socket on the LCD.
- ⓘ Pull the connector parallel to the face of the LCD.

Step 28



- Remove the four black Phillips screws along the left and right edges of the display (eight screws total).

Step 29



i The next few steps will require you to separate the LCD from the adhesive applied to the upper and lower edges of the front bezel. A heat gun may be helpful to soften the adhesive to prevent damaging the LCD panel during removal.

! The adhesive is applied such that it sticks to a thin steel strip around the perimeter of the LCD. When prying your LCD away from the front panel, be sure you are separating the front panel from the steel strip on the LCD.

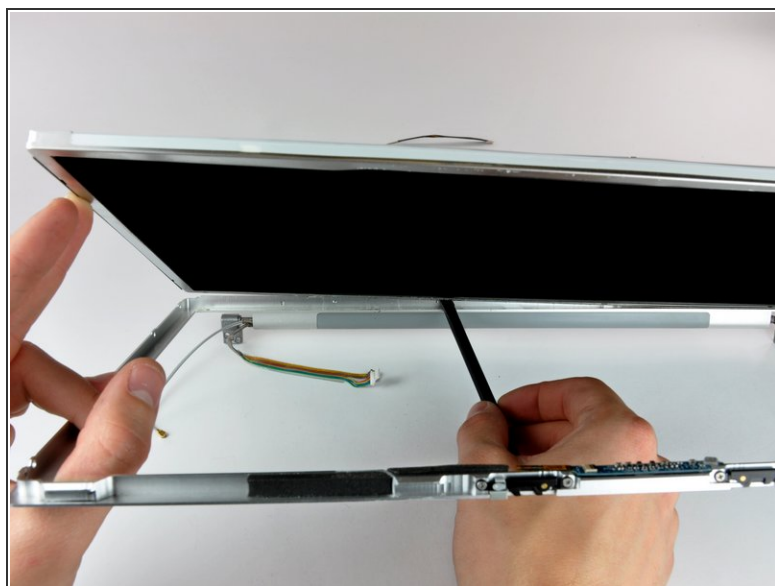
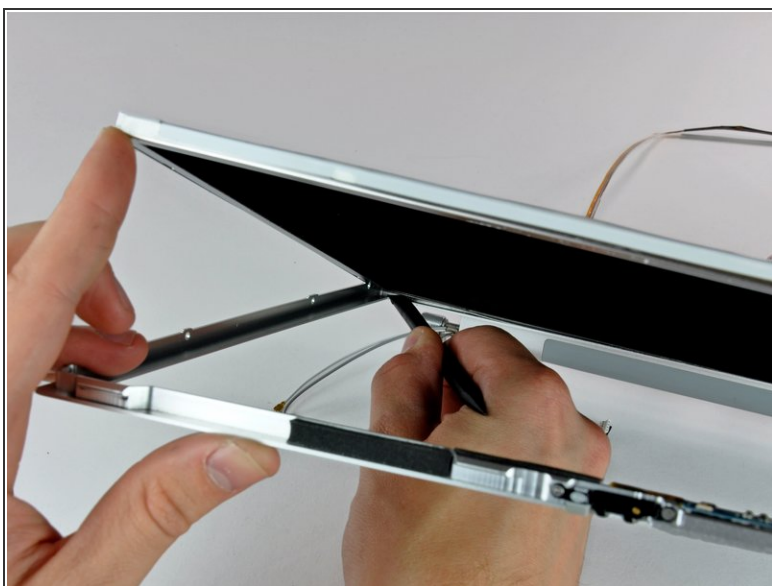
- Use the flat end of a spudger to gently lift one of the top corners of the LCD out of the front bezel.

Step 30



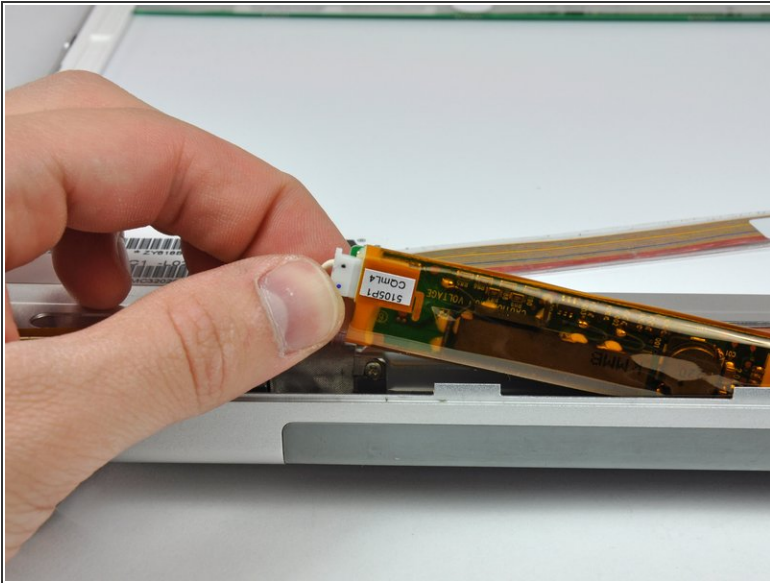
- Work your way along the top edge of the LCD, slowly prying the attached steel strip away from the front bezel.

Step 31



- Now that the top edge is free, slightly lift the LCD out of the front bezel for enough room to pry the steel strip along the lower edge of the LCD away from the front bezel.
- Pry along the lower edge of the LCD until it is freed from the adhesive on the front bezel.

Step 32



- Lift the inverter out of the clutch cover.
- Disconnect the LCD backlight connector from its socket on the inverter board.

Step 33



- Lift the LCD out of the front bezel, minding any cables that may get caught.

To reassemble your device, follow these instructions in reverse order.