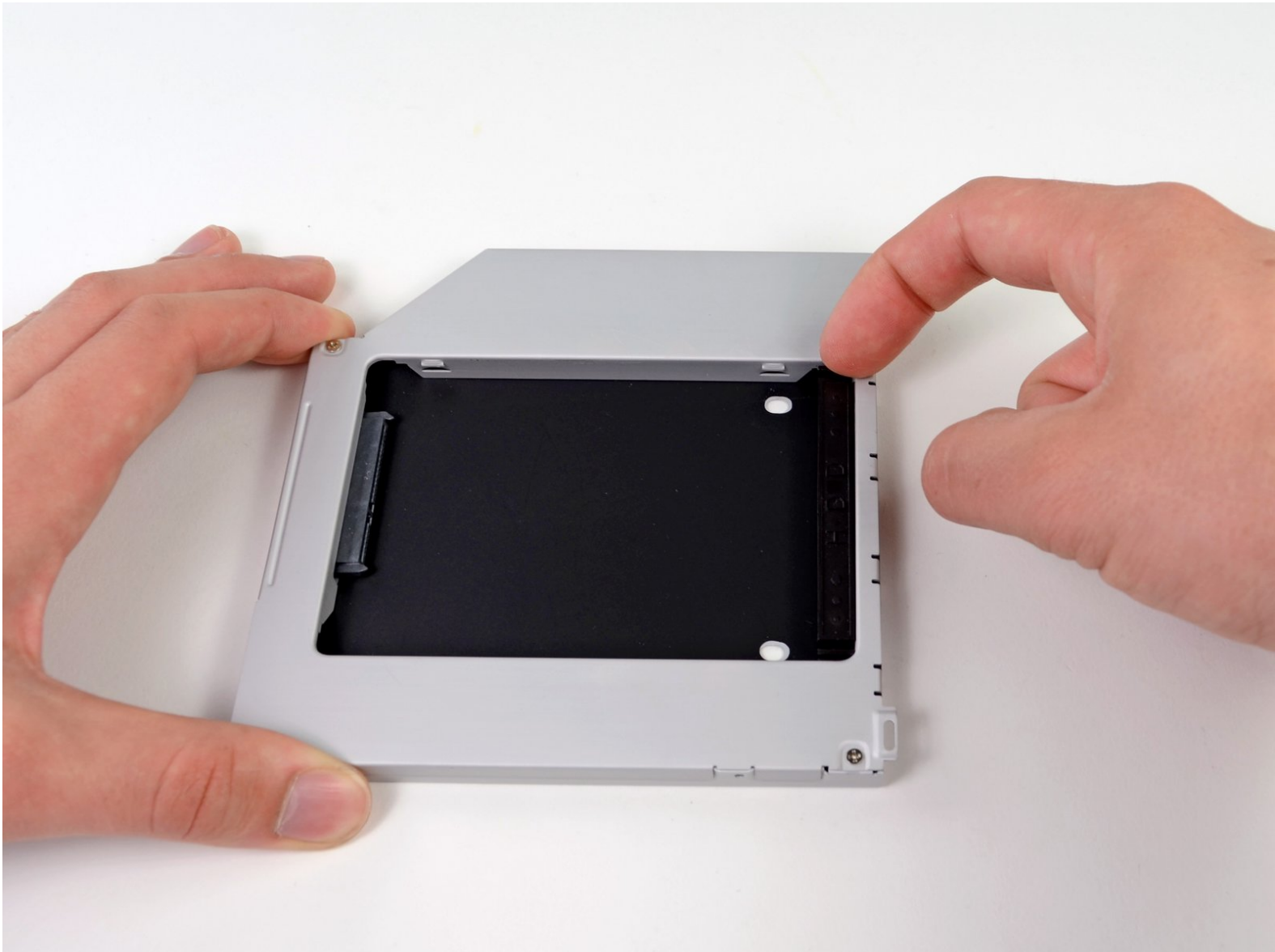




MacBook Pro 15" Core 2 Duo Models A1226 and A1260 Dual Hard Drive Replacement

Use this guide to install a second hard drive in place of the optical drive.

Written By: Andrew Optimus Goldheart



INTRODUCTION

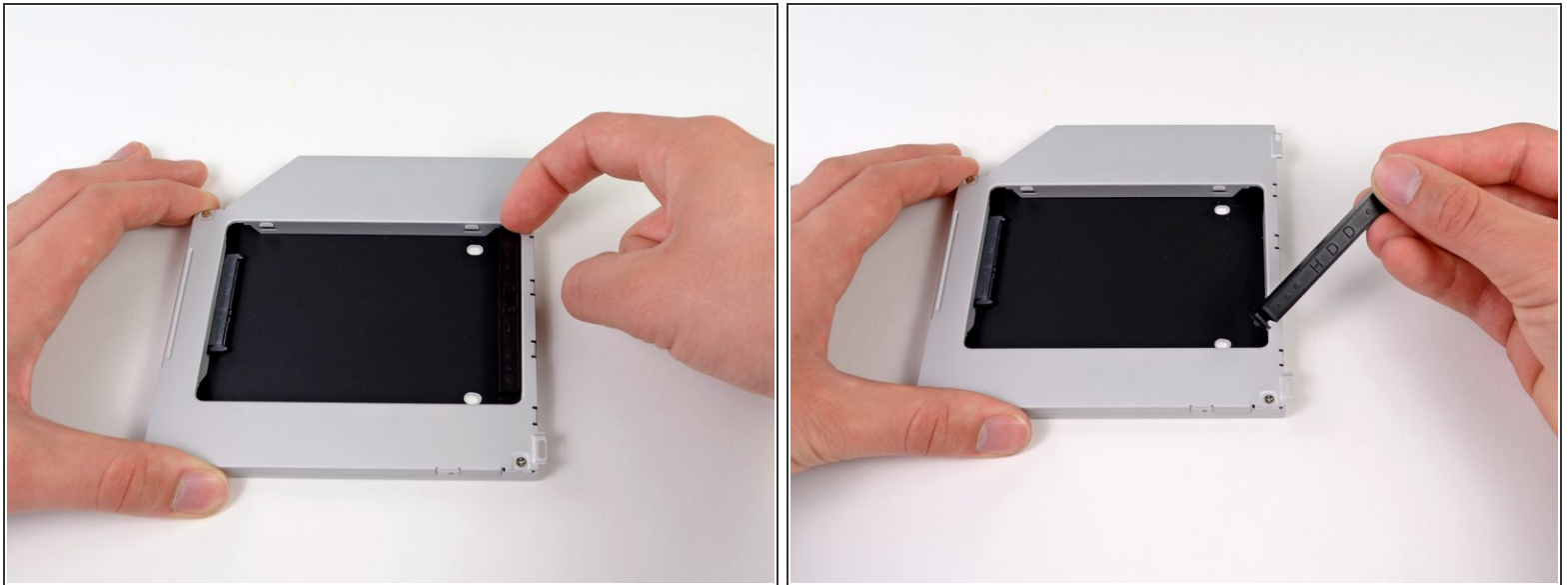
There are many benefits to adding a second hard drive to your laptop such as improved speeds, greater storage space, and less heartache when installing new software. Use this guide to install one using our optical bay hard drive enclosure.



TOOLS:

- [Phillips #1 Screwdriver](#) (1)
-

Step 1 — Dual Hard Drive



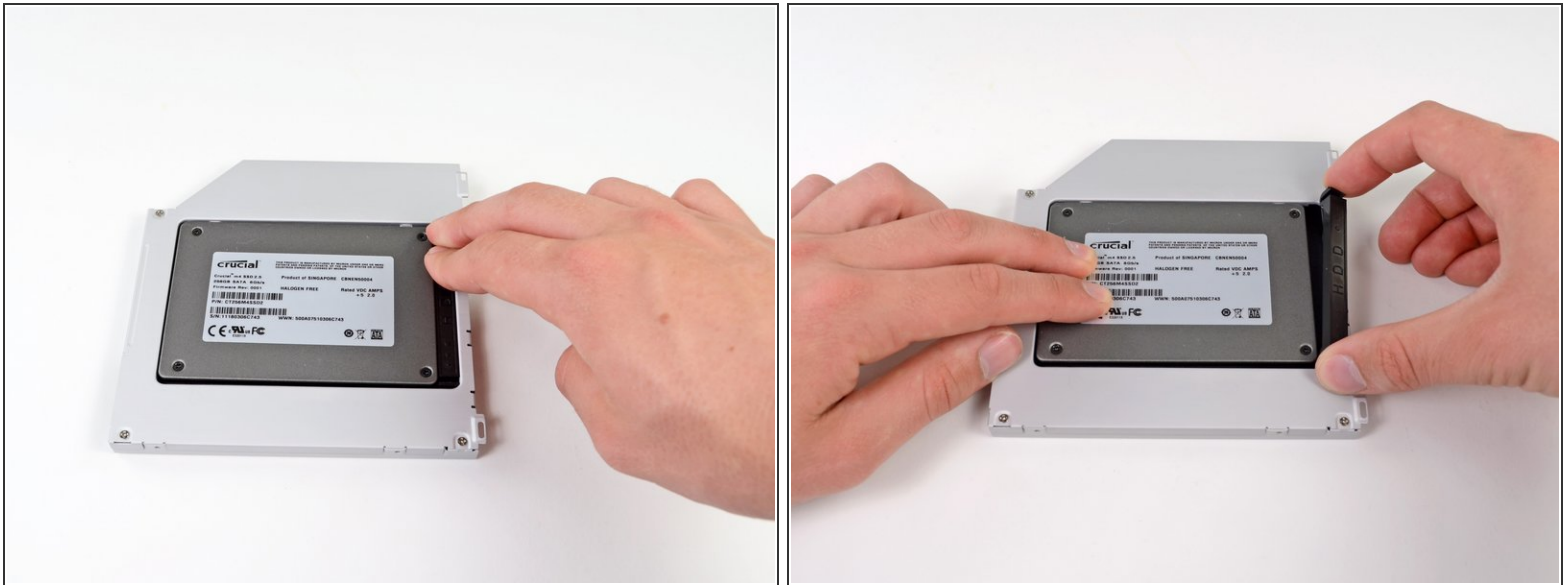
- Remove the plastic spacer from the optical bay hard drive enclosure by pressing in on one of the clips on either side and lifting it up and out of the enclosure.

Step 2



- Make sure that the hard drive connectors are facing down before placing it into the enclosure.
- Gently place the hard drive into the enclosure's hard drive slot.

Step 3



- Once the hard drive is snug, reinsert the plastic spacer while holding the hard drive against the bottom of the enclosure.

Step 4



- Use two Phillips #1 screws to secure the drive to its enclosure.
- ⓘ Transfer all brackets and the optical cables from the drive you're removing onto the new enclosure, and reverse the procedure to install the enclosure in your MacBook Pro.

To reassemble your device, follow these instructions in reverse order.