



# MacBook Pro 15" Core 2 Duo Models A1226 and A1260 Hard Drive Replacement

Written By: Walter Galan



# INTRODUCTION

You can install hard drives up to 9.5mm thick.



## TOOLS:

- [Phillips #00 Screwdriver](#) (1)
- [Spudger](#) (1)
- [T6 Torx Screwdriver](#) (1)



## PARTS:

- [MacBook and MacBook Pro \(Non-Retina\) SSD Upgrade Bundle](#) (1)
- [250 GB SSD](#) (1)
- [500 GB SSD](#) (1)
- [1 TB SSD](#) (1)
- [500 GB SSD Hybrid 2.5" Hard Drive](#) (1)
- [500 GB 5400 RPM 2.5" Hard Drive](#) (1)
- [1 TB 5400 RPM 2.5" Hard Drive](#) (1)
- [MacBook Pro 15" \(Models A1226/A1260\) Hard Drive Bracket](#) (1)
- [Universal Drive Adapter](#) (1)

## Step 1 — Battery



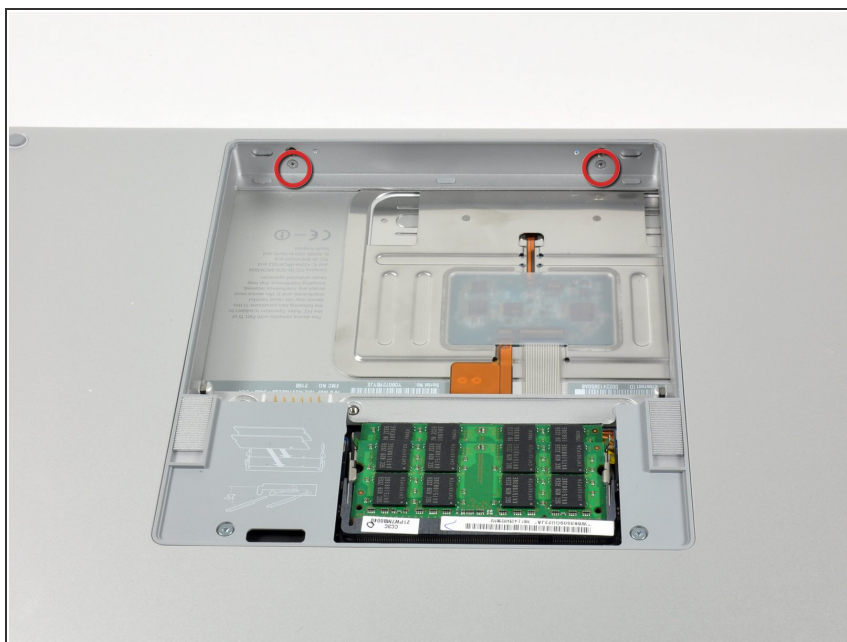
- Use your fingers to push both battery release tabs away from the battery, and lift the battery out of the computer.

## Step 2 — RAM Shield



- Remove the three identical 2mm PH000 Phillips screws from the memory door.
- Lift the memory door up enough to grip it and slide it toward you, pulling it away from the casing.

## Step 3 — Upper Case



- Remove the two 2.8 mm Phillips screws in the battery compartment near the latch.

## Step 4



- Remove the following 6 screws:
  - Two 10 mm T6 Torx screws on either side of the RAM slot.
  - Four 14.5 mm Phillips screws along the hinge.



## Step 5



- Remove the four 3.2 mm PH00 Phillips screws on the port side of the computer.

## Step 6



- Rotate the computer 90 degrees and remove the two 3.2 mm Phillips screws from the rear of the computer.




## Step 7



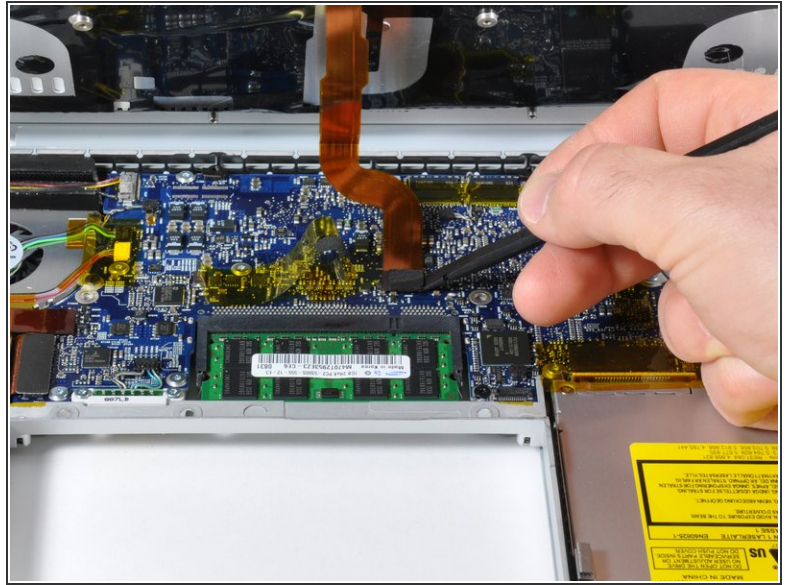
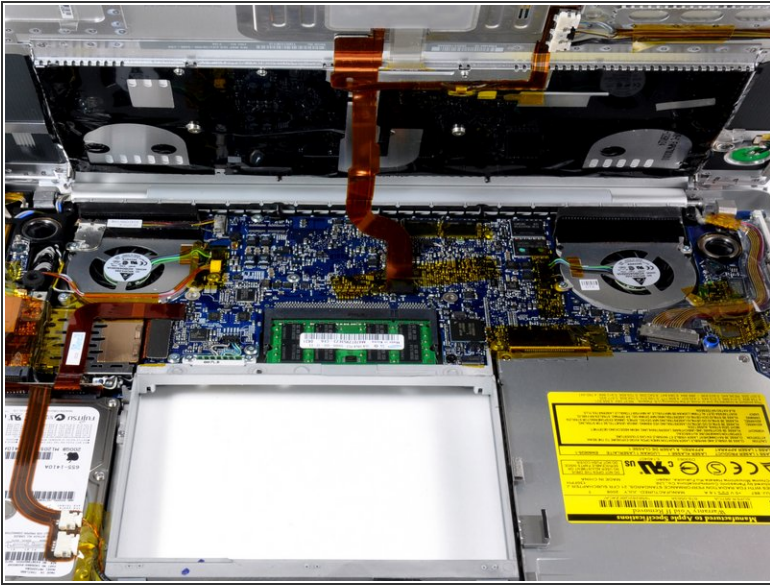
- Rotate the computer 90 degrees again and remove the four 3.2 mm Phillips screws from the side of the computer.

## Step 8



-  Do not yank the upper case off quickly. The case is attached to the logic board via a ribbon cable.
- Lift up at the rear of the case and work your fingers along the sides, freeing the case as you go. Once you have freed the sides, you may need to rock the case up and down to free the front of the upper case.
- There are four plastic clips above the DVD slot, and another above and to the left of the IR sensor. These clips can be very difficult to disengage without prying. They can also be difficult to re-engage during reassembly.
-  **Reassembly Tip:** Press down firmly on the tip of the top case above the location of each clip until you hear a *snap* to reseat them in their slots.
-  **Reassembly Tip:** The two center DVD clips will rarely snap back into place properly without help, and downward pressure will instead simply deform the frame around the DVD slot. Support the frame by inserting a plastic spudger into the DVD slot directly under the clip location until it is snug, then press down until you hear the *snap*.

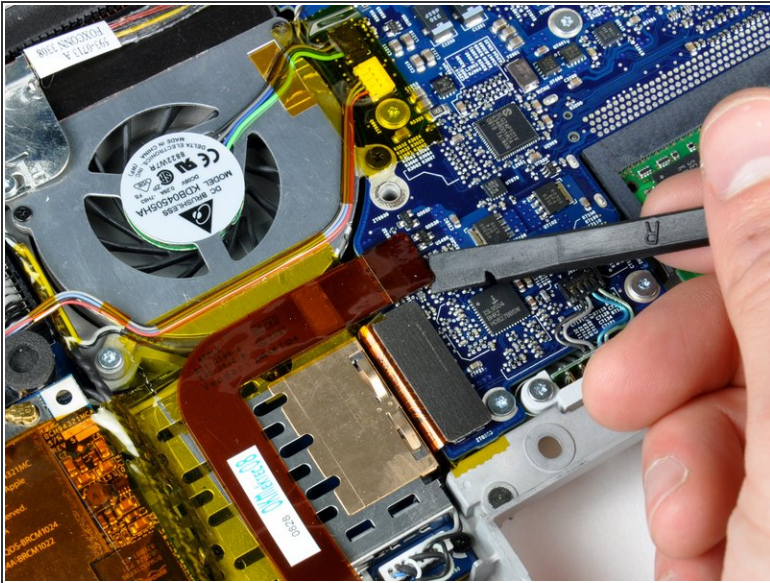
## Step 9



- Disconnect the trackpad and keyboard ribbon cable from the logic board, removing tape as necessary.
- ⓘ Note: It is possible to replace the hard drive without disconnecting the keyboard from the chassis, but it will need to be held upright to keep it out of the way, while still allowing you both hands to work on the drive removal.
- ⓘ Be careful when removing the keyboard-trackpad ribbon cable to ensure that the rear of the upper case is disengaged from the area near the hinge. It is easy to accidentally bend the screw receivers on either side of the keyboard.
- Remove the upper case.



## Step 10 — Hard Drive



- Disconnect the orange hard drive ribbon cable from the logic board.
- Remove tape as necessary and use a spudger (or carefully push a credit card under the tape) to carefully loosen the adhesive securing the sleep light and IR sensor connectors to the top of the hard drive.
- ⓘ You may find it best to loosen the left edge, then the right edge, then the center of the tape to attack it from all points, so as to gently apply force to the smallest possible sticky surface.

## Step 11



- Remove the two 8.2 mm T6 Torx screws securing the hard drive retaining bracket to the lower case.
- ⓘ Use a spudger if the hard drive ribbon cable is firmly glued to the top of the drive. You might have to work slowly in order to not damage it.
- Lift the hard drive retaining bracket up and out of the computer.
- Lift up the hard drive with one hand and use your other hand to disconnect the hard drive cable.

## Step 12 — Hard Drive



- Remove the two silver T6 6 mm Torx screws from the left side of the hard drive.
- ⓘ You'll need to transfer these screws to your new hard drive if you're changing drives.

## Step 13



- Remove the two black T6 Torx screws and white rubber bumpers from the right side of the hard drive.
- ⓘ You'll need to transfer these screws and bumpers to your new hard drive if you're changing drives.
- ⓘ If you are installing a new hard drive, we have an [OS X install guide](#) to get you up and running.

To reassemble your device, follow these instructions in reverse order.