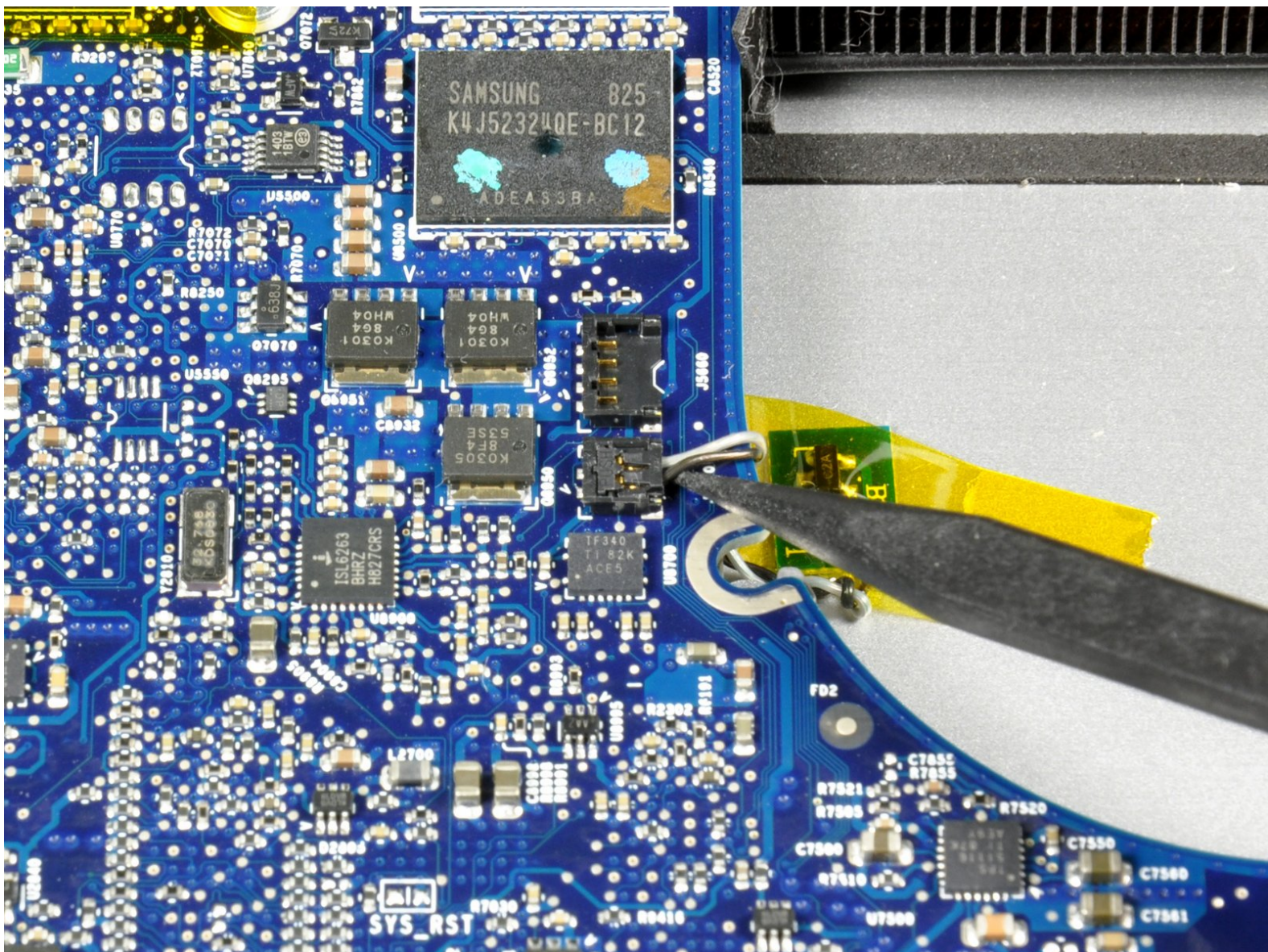






# MacBook Pro 15" Core 2 Duo Models A1226 and A1260 Right Thermal Sensor Replacement

Written By: Walter Galan



# INTRODUCTION

This detects the internal temperature of your machine for heat management.

<div> <b>TOOLS:</b></div> <div><ul style="list-style-type: none"><li>• <a href="#">Phillips #00 Screwdriver</a> (1)</li><li>• <a href="#">Spudger</a> (1)</li><li>• <a href="#">T6 Torx Screwdriver</a> (1)</li></ul></div>	<div><div></div> <b>PARTS:</b></div> <div><ul style="list-style-type: none"><li>• <a href="#">MacBook Pro 15" (Model A1226) Right Thermal Sensor</a> (1)</li><li>• <a href="#">MacBook Pro 15" (Model A1260) Right Thermal Sensor</a> (1)</li></ul></div>
--	--



## Step 1 — Battery



- Use your fingers to push both battery release tabs away from the battery, and lift the battery out of the computer.

## Step 2 — RAM Shield



- Remove the three identical 2mm PH000 Phillips screws from the memory door.
- Lift the memory door up enough to grip it and slide it toward you, pulling it away from the casing.

## Step 3 — Upper Case



- Remove the two 2.8 mm Phillips screws in the battery compartment near the latch.

## Step 4



- Remove the following 6 screws:
  - Two 10 mm T6 Torx screws on either side of the RAM slot.
  - Four 14.5 mm Phillips screws along the hinge.

## Step 5



- Remove the four 3.2 mm PH00 Phillips screws on the port side of the computer.

## Step 6



- Rotate the computer 90 degrees and remove the two 3.2 mm Phillips screws from the rear of the computer.

## Step 7






- Rotate the computer 90 degrees again and remove the four 3.2 mm Phillips screws from the side of the computer.

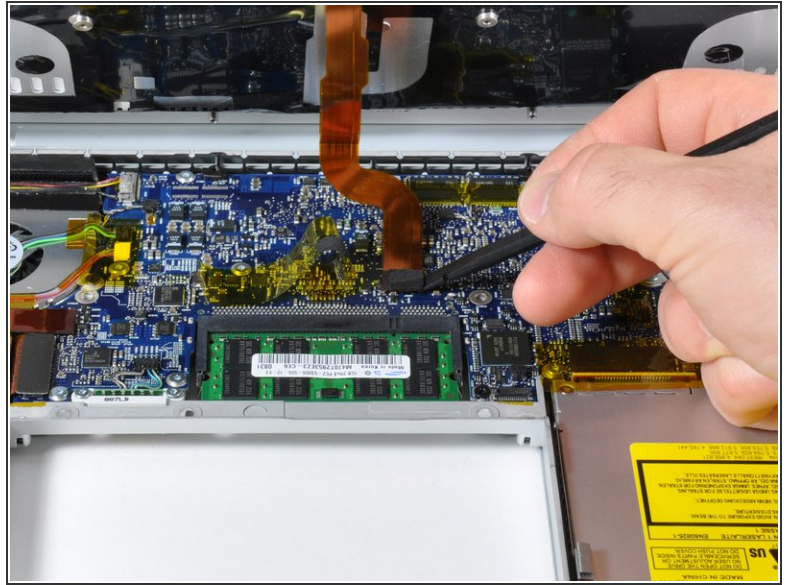
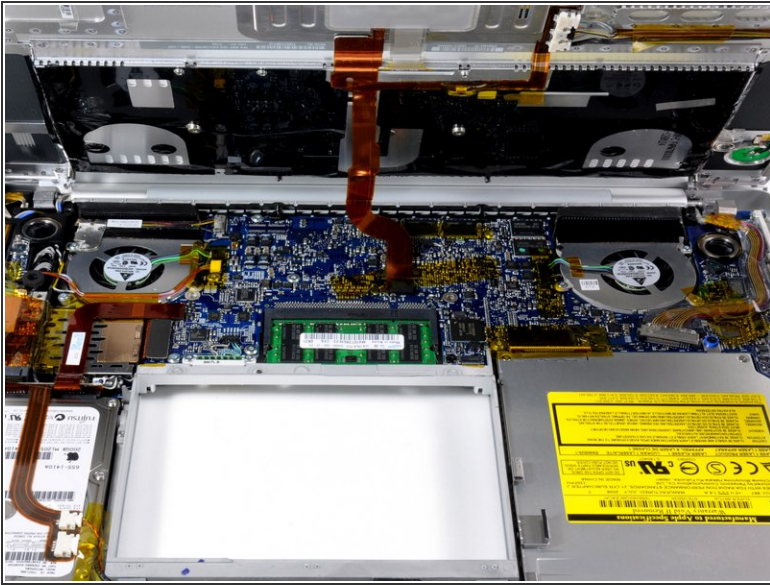


## Step 8



-  Do not yank the upper case off quickly. The case is attached to the logic board via a ribbon cable.
- Lift up at the rear of the case and work your fingers along the sides, freeing the case as you go. Once you have freed the sides, you may need to rock the case up and down to free the front of the upper case.
  - There are four plastic clips above the DVD slot, and another above and to the left of the IR sensor. These clips can be very difficult to disengage without prying. They can also be difficult to re-engage during reassembly.
-  **Reassembly Tip:** Press down firmly on the tip of the top case above the location of each clip until you hear a *snap* to reseat them in their slots.
-  **Reassembly Tip:** The two center DVD clips will rarely snap back into place properly without help, and downward pressure will instead simply deform the frame around the DVD slot. Support the frame by inserting a plastic spudger into the DVD slot directly under the clip location until it is snug, then press down until you hear the *snap*.

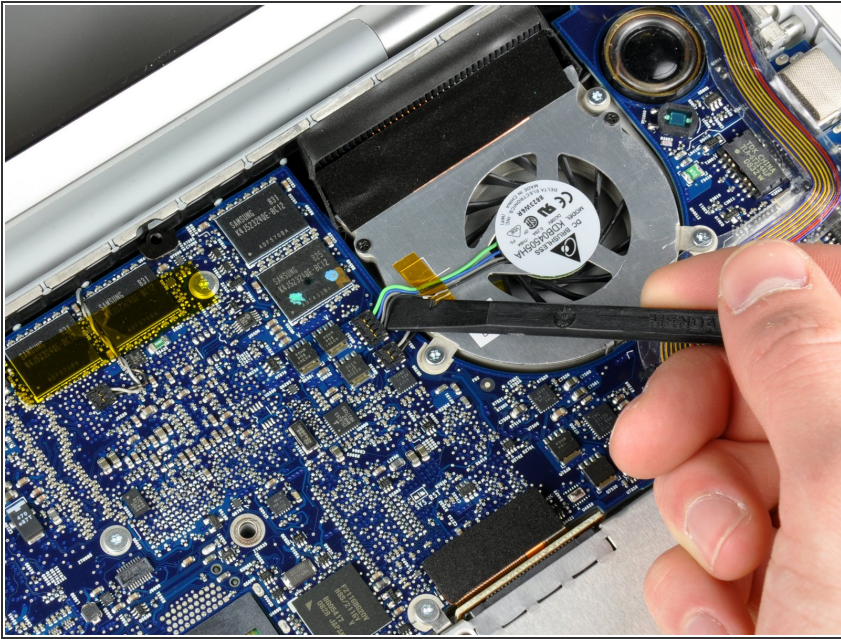
## Step 9



- Disconnect the trackpad and keyboard ribbon cable from the logic board, removing tape as necessary.
- ⓘ Note: It is possible to replace the hard drive without disconnecting the keyboard from the chassis, but it will need to be held upright to keep it out of the way, while still allowing you both hands to work on the drive removal.
- ⓘ Be careful when removing the keyboard-trackpad ribbon cable to ensure that the rear of the upper case is disengaged from the area near the hinge. It is easy to accidentally bend the screw receivers on either side of the keyboard.
- Remove the upper case.

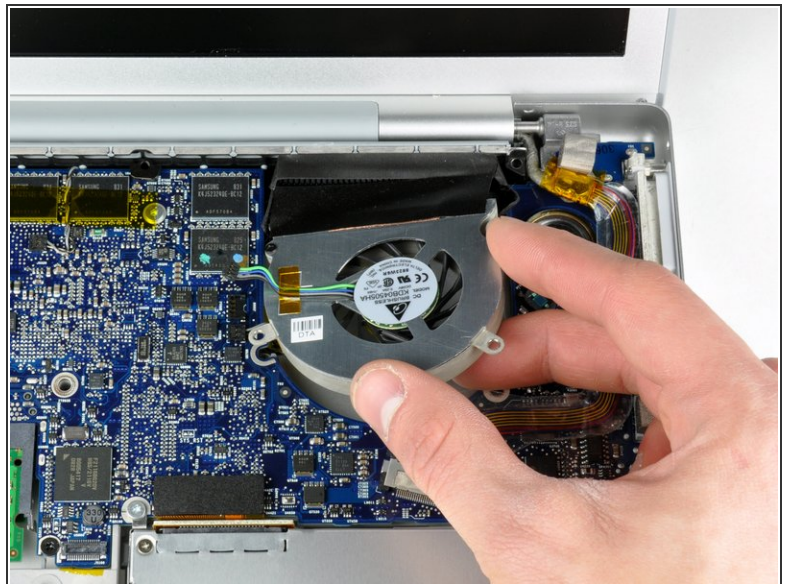


## Step 10 — Right Fan



- Disconnect the right fan cable from the logic board by placing a spudger beneath the cable and lifting up. Be sure to lift up on the right side as shown.

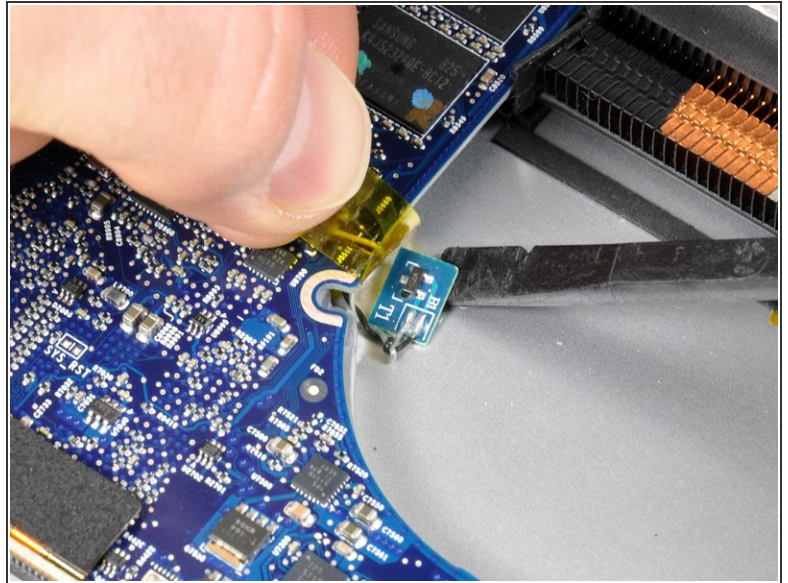
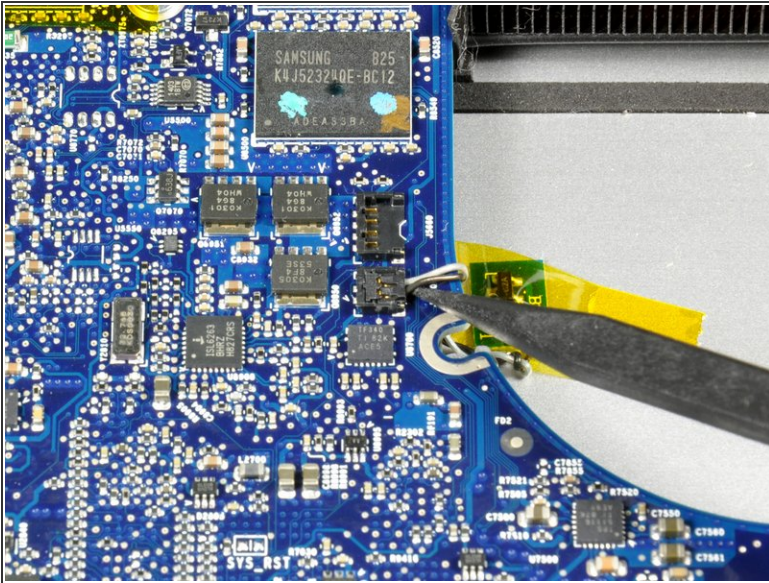
## Step 11




- Remove the three silver T6 Torx screws securing the right fan to the logic board and lower case.
- Lift the right fan up and carefully peel up the tape securing the fan to the heat sink as you go.



## Step 12 — Right Thermal Sensor



 Use caution when removing the thermal sensor connector. The connector can easily break off the logic board if this step is performed improperly.

- Disconnect the right thermal sensor cable from the logic board by placing a spudger beneath the cable and lifting up.
- Peel up the orange Kapton tape covering the right thermal sensor.
- Use a spudger to pry the right thermal sensor off the lower case.

To reassemble your device, follow these instructions in reverse order.